



Plasma Coolant

PART NO.	DESCRIPTION
PX7-2850 coolant	1 gal. containers (4 per carton)
PX7-2850-55 coolant	55 gal. drum

Sold in standard cartons only.

The industry approved product for Plasma and Tig water circulator applications.

This is an improved 70/30 blend.

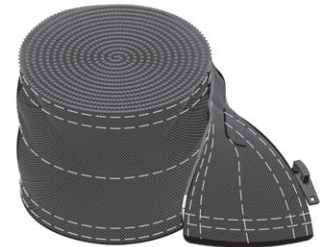


Cable Covers for Plasma

- Extra flexible • Light weight • Exceptional value



PROFAX	DESCRIPTION
3-22	3" cover for 25' torch packages
3-48	3" cover for 50' torch packages
4-22	4" cover for 25' torch packages
4-48	4" cover for 50' torch packages

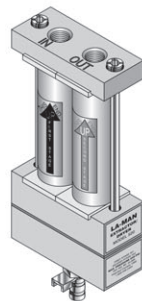


Air regulator, Filters / Replacement Elements

Regulator



Compressed Air Filter



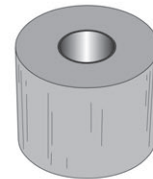
LA-MAN

Sub-micronic compressed air filter



Motor Guard Corporation

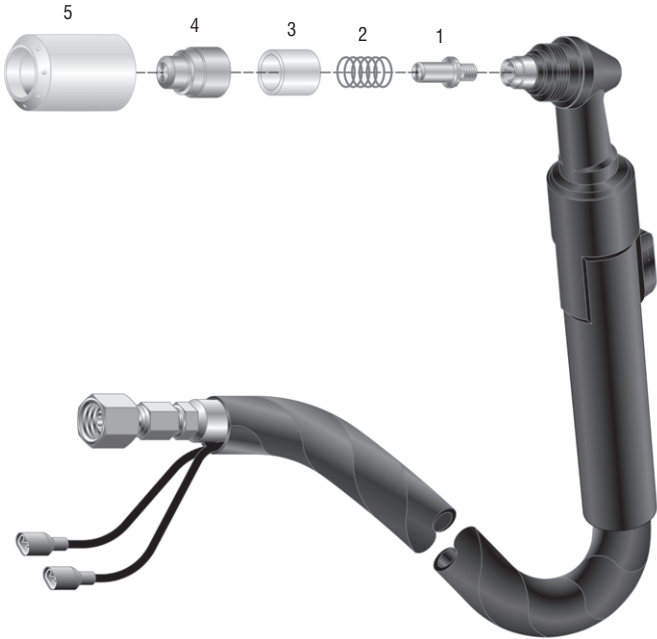
Replacement element



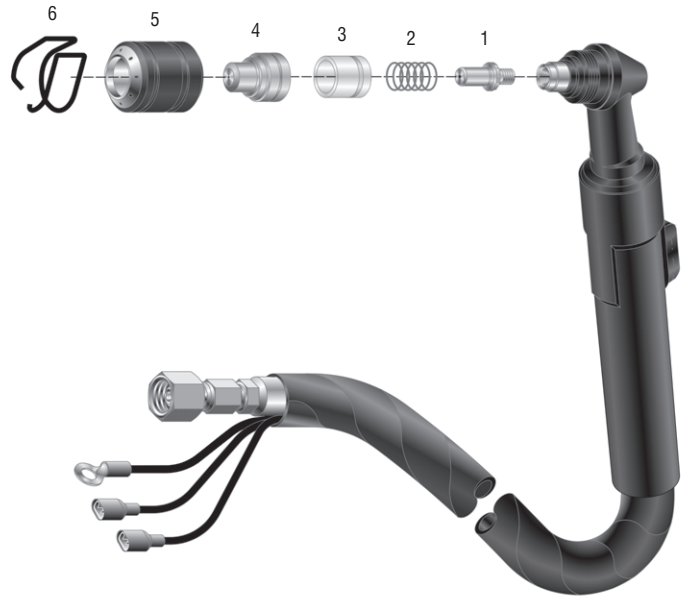
PROFAX	DESCRIPTION	PROFAX	DESCRIPTION	PROFAX	DESCRIPTION	PROFAX	DESCRIPTION
5524	Air line regulator plasma /secondary with fittings	5520A	Air filter	M-26	Air filter (.01 micron filtration)	M-723	Replacement element for the M-26 (std. pkg. - 4 ea.)
		015SK	Filter service kit				



PSB 30 STYLE TORCH HEAD COMPONENTS



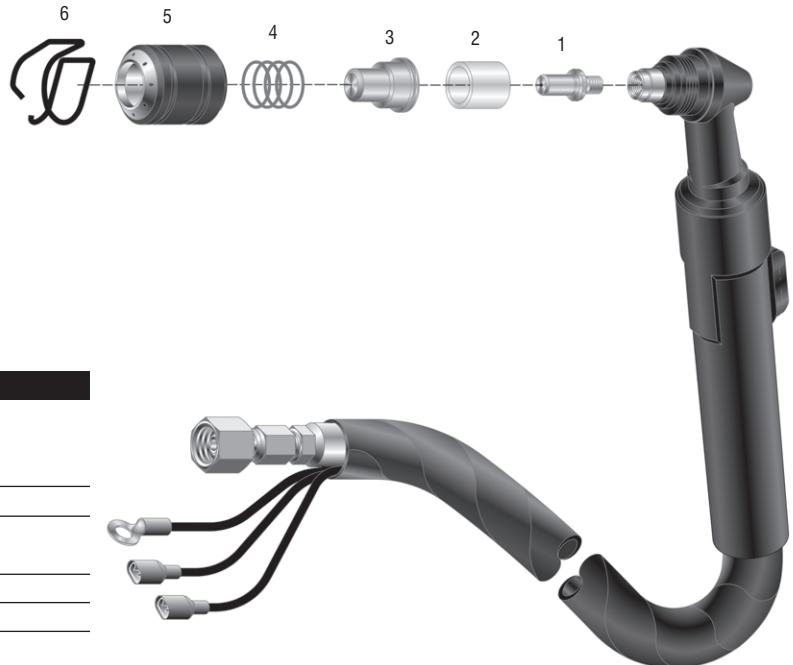
PSB 31 STYLE TORCH HEAD COMPONENTS



NO.	PROFAX	BINZEL®	DESCRIPTION
1.	PX744.0014	744.0014	Electrode - Zr.-14.5mm
	PX744.0013	744.0013	Electrode - Zr.-15mm
	PX744.0012	744.0012	Electrode - Zr.-15.5mm
2.	PX744.0024	744.0024	Spring
3.	PX744.0076	744.0076	Insulator sleeve for HF
	PX744.0023	744.0023	Insulator sleeve
4.	PX744.0010	744.0010	Tip 1.0mm
	PX744.0061	744.0061	Tip 1.2mm
5.	PX744.0011	744.0011	Air diffuser, insulator

NO.	PROFAX	BINZEL®	DESCRIPTION
1.	PX742.0016	742.0016	Electrode - Zr.-15.5mm
	PX742.0017	742.0017	Electrode - Zr.-16mm
	PX742.0018	742.0018	Electrode - Zr.-16.5mm
2.	PX744.0024	744.0024	Spring
3.	PX742.0038	742.0038	Insulating sleeve for HF
	PX742.0025	742.0025	Spring sleeve
4.	PX742.0011	742.0011	Tip 1.0mm
	PX742.0026	742.0026	Tip 1.2mm
5.	PX742.0004	742.0004	Air diffuser, insulator
6.	PX51902	51902	Spacer spring

PSB 31 K+K STYLE TORCH HEAD COMPONENTS

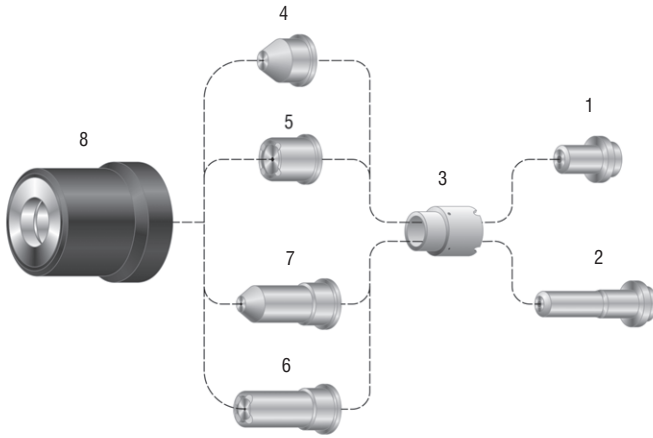


NO.	PROFAX	BINZEL®	DESCRIPTION
1.	PX742.0016	742.0016	Electrode - Zr.-15.5mm
	PX742.0017	742.0017	Electrode - Zr.-16mm
	PX742.0018	742.0018	Electrode - Zr.-16.5mm
2.	PX742.0082	742.0082	Insulating sleeve
3.	PX742.0083	742.0083	Tip 1.0mm
	PX742.0106	742.0106	Tip 1.2mm
4.	PX742.0084	742.0084	Spring
5.	PX742.0086	742.0086	Air diffuser, insulator
6.	PX51902	51902	Spacer spring

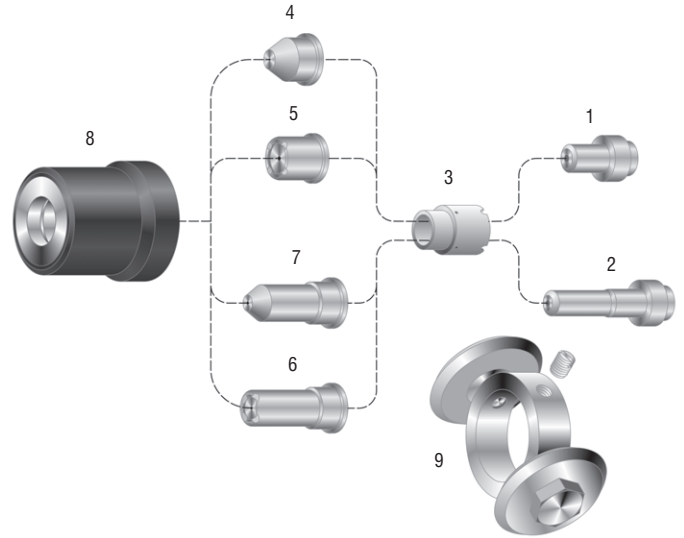
PROFAX is in no way affiliated with BINZEL. The parts advertised for sale are not genuine BINZEL parts, but are parts made for and by PROFAX. References to BINZEL machines, torches and numbers are for your convenience only. We reserve the right to substitute genuine BINZEL parts in place of PROFAX parts.



25/30/35 STYLE TORCH HEAD COMPONENTS



50 STYLE TORCH HEAD COMPONENTS

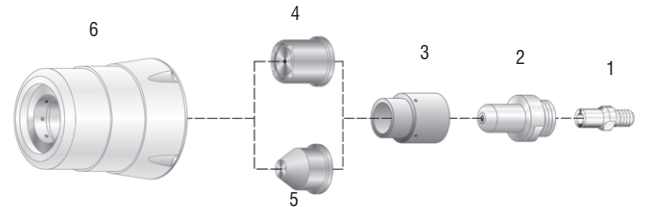


NO.	PROFAX	CEBORA®	DESCRIPTION
1.	PX1520-H	1520-H	Electrode - internal threads
2.	PX1519-H	1519-H	Extended electrode - internal threads
3.	PX1510	1510	Swirl ring - VESPEL®
4.	PX1305	1305	Conical tip, lo-amp
5.	PX1304	1304	Tip
6.	PX1370	1370	Extended tip
7.	PX1306	1306	Extended conical tip, lo-amp
8.	PX5710120	5710120	Retaining cap

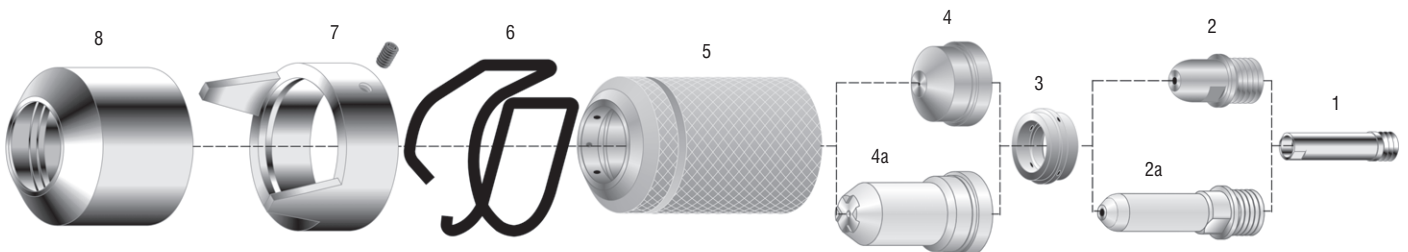
NO.	PROFAX	CEBORA®	DESCRIPTION
1.	PX1521-H	1521-H	Electrode - no threads
2.	PX1518-H	1518-H	Extended electrode - no threads
3.	PX1510	1510	Swirl ring - VESPEL®
4.	PX1305	1305	Conical tip, lo-amp
5.	PX1304	1304	Tip
6.	PX1370	1370	Extended tip
7.	PX1396	1396	Tip - long life
8.	PX1395	1395	Extended tip - long life
9.	PX1306	1306	Extended conical tip, lo-amp
8.	PX5710121	5710121	Retaining cap
9.	PX51803	51803	Buggy

70 STYLE TORCH HEAD COMPONENTS

NO.	PROFAX	CEBORA®	DESCRIPTION
1.	PX3.065204	3.065204	Diffuser
2.	PX1402	1402	Electrode - external threads
3.	PX020101	020101	Swirl ring - VESPEL®
4.	PX1308	1308	Tip
4.	PX1396	1396	Tip
5.	PX1305	1305	Tip
6.	PX5710120	5710120	Nozzle retaining



90/120/150 STYLE TORCH HEAD COMPONENTS



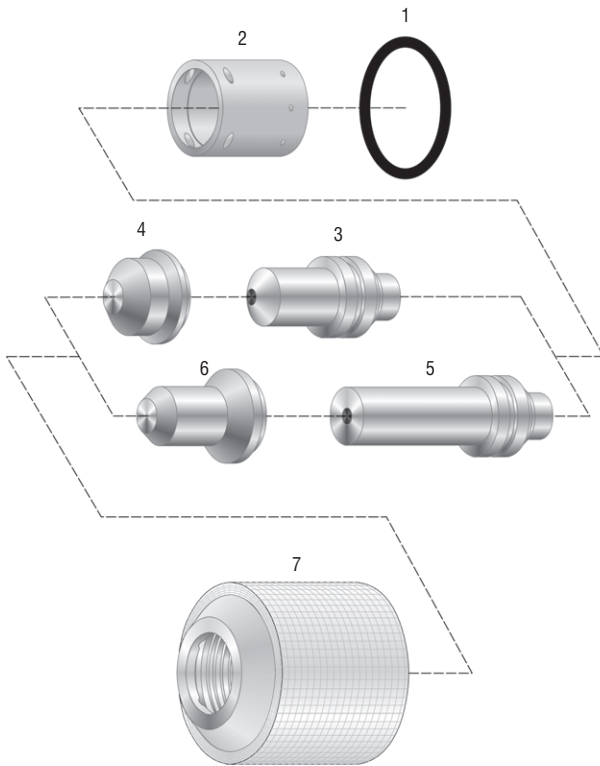
NO.	PROFAX	CEBORA®	DESCRIPTION
1.	PX1378	1378	Diffuser
2.	PX1376	1376	Electrode - Hf.
2a.	PX1517	1517	Extended electrode - Hf.
3.	PX1377	1377	Swirl ving - VESPEL®
4.	PX1371	1371	Nozzle tip 1.1mm
4.	PX1372	1372	Nozzle tip 1.35mm
4.	PX1373	1373	Nozzle tip 1.6mm

NO.	PROFAX	CEBORA®	DESCRIPTION
1.	PX1374	1374	Nozzle tip 1.8mm
1.	PX1375	1375	Gouging nozzle 3.0mm
2a.	PX1369	1369	Extended nozzle
5.	PX1389	1389	Nozzle retaining cap
6.	PX1386	1386	Spacer spring
7.	PX1408	1408	Double pointed spacer
8.	PX1406	1406	Gouging spacer

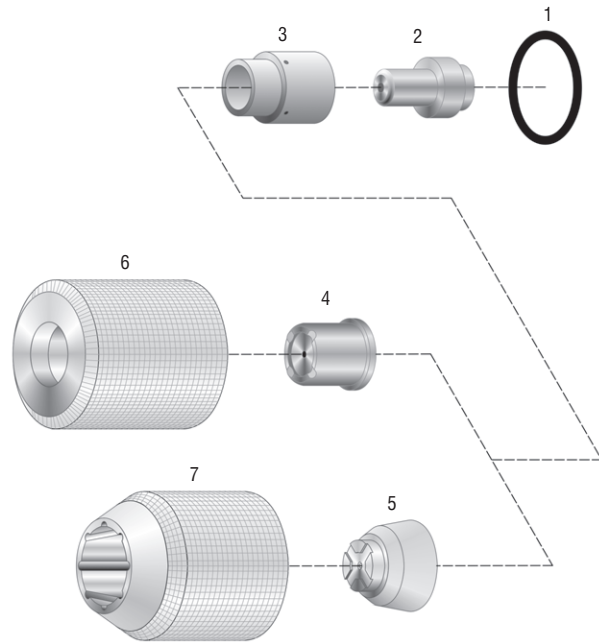
PROFAX is in no way affiliated with CEBORA. The parts advertised for sale are not genuine CEBORA parts, but are parts made for and by PROFAX. References to CEBORA machines, torches and numbers are for your convenience only. We reserve the right to substitute genuine CEBORA parts in place of PROFAX parts.



20-20 STYLE TORCH HEAD COMPONENTS

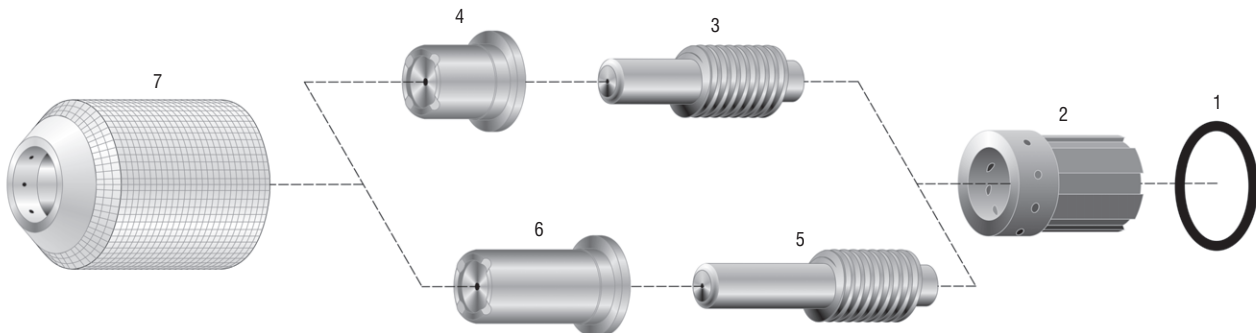


20 - 40 STYLE TORCH HEAD COMPONENTS



NO.	PROFAX	CENTURY®/SOLAR®	DESCRIPTION	NO.	PROFAX	CENTURY®/SOLAR®	DESCRIPTION
1.	PX4405	4405 44050	O-ring	1.	PX4405	4405 44050	O-ring
2.	PX4422	4422 44220	Swirl ring	2.	PX4402	4402 44020	Electrode
3.	PX4420	4420 44200	Electrode	3.	PX4403	4403 44030	Swirl ring
4.	PX4421	4421 44210	Nozzle tip	4.	PX4401	4401 44010	Nozzle tip
5.	PX4426	4426 4426	Electrode, extended	5.	PX4411	4411 44110	Nozzle tapered
6.	PX4427	4427 4427	Nozzle tip, extended	6.	PX4404	4404 44040	Retaining cap
7.	PX4423	4423 44230	Retaining cap	7.	PX4414	4414 44140	Tapered retaining cap

20-50 STYLE TORCH HEAD COMPONENTS

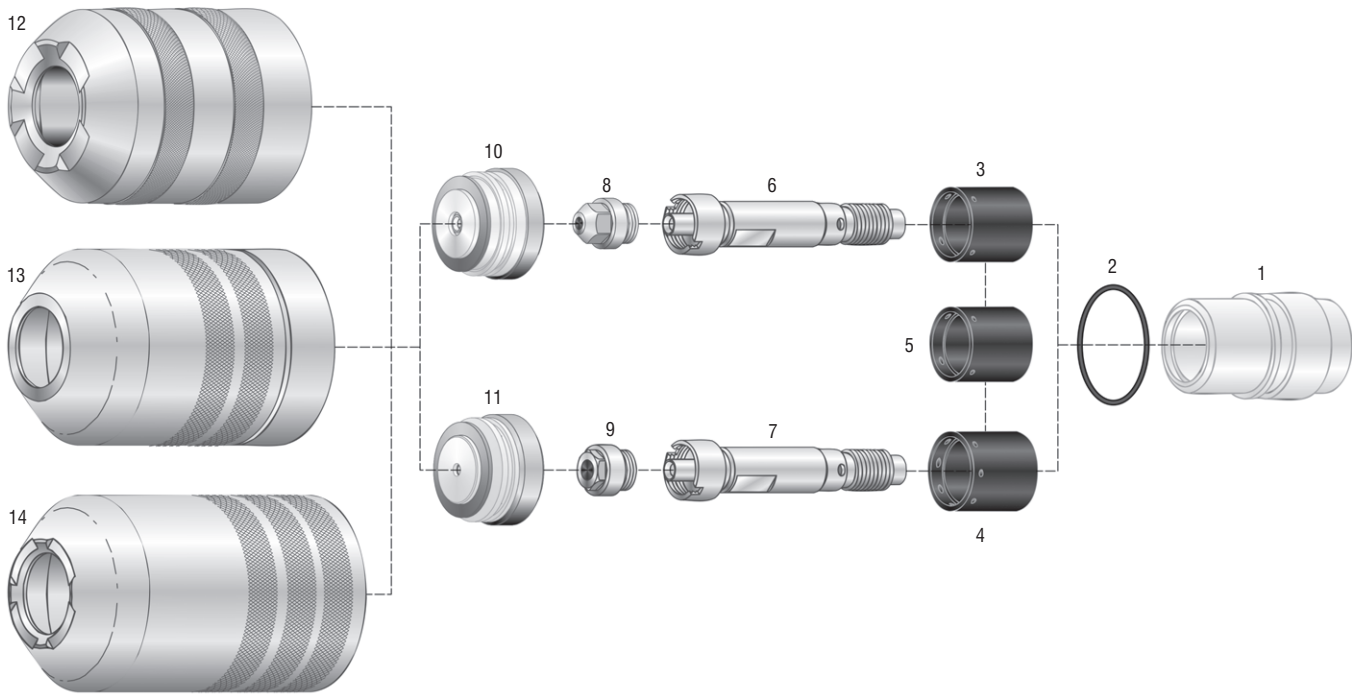


NO.	PROFAX	CENTURY®/SOLAR®	DESCRIPTION	NO.	PROFAX	CENTURY®/SOLAR®	DESCRIPTION
1.	PX4405	4405 44050	O-ring	1.	PX4451	4451 44510	Nozzle, hi-current
2.	PX4452	4452 44520	Swirl ring	5.	PX4450L	4450L 4450L	Extended electrode
3.	PX4450	4450 44500	Electrode air	6.	PX4454L	4454L 4454L	Extended nozzle
4.	PX4454	4454 44540	Nozzle .038, lo-current	7.	PX4453	4453 44530	Nozzle retaining cap

PROFAX is in no way affiliated with CENTURY / SOLAR. The parts advertised for sale are not genuine CENTURY / SOLAR parts, but are parts made for and by PROFAX. References to CENTURY / SOLAR machines, torches and numbers are for your convenience only. We reserve the right to substitute genuine CENTURY / SOLAR parts in place of PROFAX parts.



**PT-15XL STYLE TORCH HEAD COMPONENTS
 USED WITH CONSOLES PCM-8 & ESP-1000**

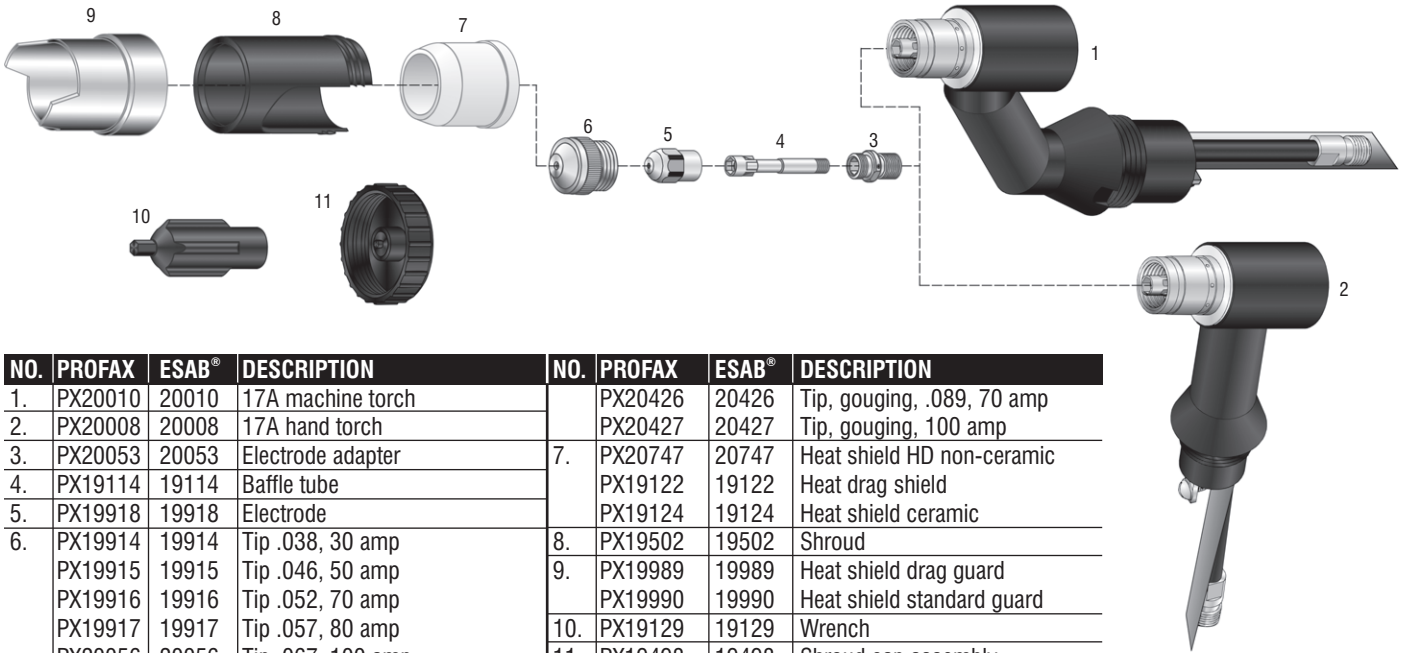


NO.	PROFAX	ESAB®	DESCRIPTION	NO.	PROFAX	ESAB®	DESCRIPTION
1.	PX20755	20755	Insulator assembly	11.	PX2075691	2075691	Nozzle assembly, .125, N ₂
2.	PX996528	996528	O-ring		PX2075692	2075692	Nozzle assembly, .125, rev., N ₂
3.	PX35660	35660	Gas swirl baffle, 8 holes, ceramic, O ₂		PX2075611	2075611	Nozzle assembly, .156, N ₂
4.	PX2075341	2075341	Gas swirl baffle, 4 holes plastic, N ₂		PX2075614	2075614	Nozzle assembly, .156, rev., N ₂
	PX2075360	2075360	Gas swirl baffle, 4 holes plastic, rev, N ₂		PX2075612	2075612	Nozzle assembly, .200, N ₂
5.	PX948142	948142	Gas swirl baffle, 4 holes, ceramic		PX2075615	2075615	Nozzle assembly, .200, rev., N ₂
	PX948143	948143	Gas swirl baffle, 4 holes, ceramic, rev.		PX2075613	2075613	Nozzle assembly, .230, N ₂
	PX2075586	2075586	Gas swirl baffle, 8 holes ceramic, Ar/H ₂		PX2075690	2075690	Nozzle assembly, .230, rev., N ₂
6.	PX20398	20398	Electrode tip holder		PX2075587	2075587	Hi-current nozzle assembly, .250, AR/H ₂
7.	PX2075343	2075343	Electrode tip holder	12.	PX20759	20759	Retaining cap, N ₂ & AR/H ₂
8.	PX20763XL	20763XL	Electrode, oxygen	13.	PX20402	20402	Retaining cap, no feet
9.	PX600236	600236	Electrode	14.	PX20758	20758	Retaining cap, O ₂ & beveling
10.	PX20751	20751	Nozzle assembly, oxygen, .099				
	PX35662	35662	Nozzle assembly, oxygen, .116				
	PX35664	35664	Nozzle assembly, oxygen, .120				

PROFAX is in no way affiliated with ESAB(L-Tec/Linde). The parts advertised for sale are not genuine ESAB(L-Tec/Linde) parts, but are parts made for and by PROFAX. References to ESAB(L-Tec/Linde) machines, torches and numbers are for your convenience only. We reserve the right to substitute genuine ESAB(L-Tec/Linde) parts in place of PROFAX parts.

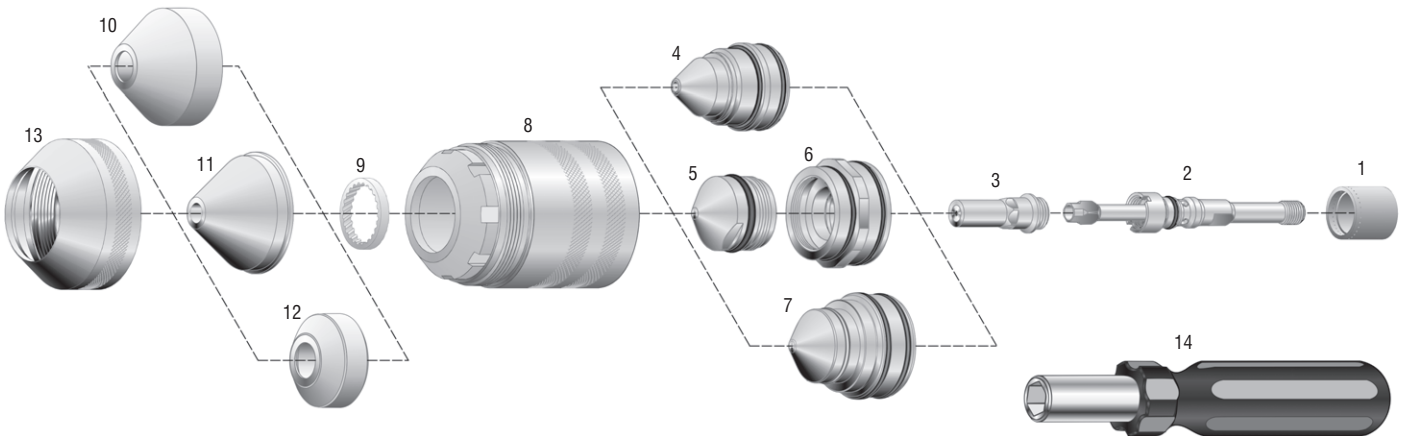


**PT-17A/PT-17AM STYLE TORCH HEAD COMPONENTS
 USED WITH CONSOLES PCM-150 (875/1125 W/ADAPTER)**



NO.	PROFAX	ESAB®	DESCRIPTION	NO.	PROFAX	ESAB®	DESCRIPTION
1.	PX20010	20010	17A machine torch		PX20426	20426	Tip, gouging, .089, 70 amp
2.	PX20008	20008	17A hand torch		PX20427	20427	Tip, gouging, 100 amp
3.	PX20053	20053	Electrode adapter	7.	PX20747	20747	Heat shield HD non-ceramic
4.	PX19114	19114	Baffle tube		PX19122	19122	Heat drag shield
5.	PX19918	19918	Electrode		PX19124	19124	Heat shield ceramic
6.	PX19914	19914	Tip .038, 30 amp	8.	PX19502	19502	Shroud
	PX19915	19915	Tip .046, 50 amp	9.	PX19989	19989	Heat shield drag guard
	PX19916	19916	Tip .052, 70 amp		PX19990	19990	Heat shield standard guard
	PX19917	19917	Tip .057, 80 amp	10.	PX19129	19129	Wrench
	PX20056	20056	Tip .067, 100 amp	11.	PX19498	19498	Shroud cap assembly

PT-19XL/19XLS STYLE TORCH HEAD COMPONENTS USED WITH CONSOLE ESP-200, PCM-150, PCC-11, DEUCE PACK 150



NO.	PROFAX	ESAB®	DESCRIPTION	NO.	PROFAX	ESAB®	DESCRIPTION
1.	PX22194	22194	Gas baffle (PT-19XLS)	6.	PX22027	22027	Nozzle base, 50 amp (2 pc)(PT-19XLS)
	PX35660	35660	Gas baffle 8 x .047 (PT-19XLS)		PX22028	22028	Nozzle base, 100-200 amp (2 pc)(PT-19XLS)
	PX948142	948142	Gas baffle, 4 hole (PT-19XL/19XLS)	7.	PX34730	34730	Nozzle assembly, 50 amp (PT-19XL)
2.	PX34084	34084	Electrode holder (PT-19XL)	8.	PX37082	37082	Nozzle retaining cup (PT-19XLS)
	PX37068	37068	Electrode holder (PT-19XLS)	9.	PX21796	21796	Diffuser, 50 amp (PT-19XL)
3.	PX22196	22196	Electrode, 400 amp, O ₂ (PT-19XLS)		PX21944	21944	Diffuser, 100-600 amp (PT-19XLS)
	PX34086XL	34086XL	Electrode long Air/O ₂ .50-250 a. (PT-19XLS)		PX22496	22496	Reverse diffuser (PT-19XLS)
4.	PX21822	21822	Nozzle, 250 amp, 1 pc. (PT-19XLS)	10.	PX948186	948186	Heat shield cup 150/250 amp (PT-19XL)
	PX22195	22195	Nozzle, 400-450 amp, 1 pc. (PT-19XLS)	11.	PX21795	21795	Shield, 50 amp (PT-19XLS)
	PX22401	22401	Nozzle, 600 amp, 1 pc. (PT-19XLS)		PX21802	21802	Shield, 50-250 amp (PT-19XLS)
	PX34048	34048	Nozzle assembly, 150 amp (PT-19XL)		PX21945	21945	Shield, 325-600 amp (PT-19XLS)
	PX34101	34101	Nozzle assembly, 250 amp (PT-19XL)	12.	PX34885	34885	Heat shield, 50 amp (PT-19XL)
	PX35885	35885	Nozzle, 350 amp, 1 pc. (PT-19XLS)	13.	PX37081	37081	Retainer shield (PT-19XLS)
5.	PX22026	22026	Nozzle tip, 50 amp (2 pc)(PT-19XLS)	14.	PX996568	996568	Electrode tip removal tool (PT-19XL)
	PX22029	22029	Nozzle tip, 100 amp (2 pc)(PT-19XLS)	*	PX34085	34085	Nozzle retaining cap (PT-19XL)
	PX22030	22030	Nozzle tip, 150 amp (2 pc)(PT-19XLS)	*	PX86W85	86W85	O-ring (PT-19XL)
	PX22031	22031	Nozzle tip, 200 amp (2 pc)(PT-19XLS)	*	PX996526	996526	O-ring (PT-19XL)
				*	PX999630	999630	Nozzle removal tool (PT-19XL)

PROFAX is in no way affiliated with ESAB(L-Tec/Linde). The parts advertised for sale are not genuine ESAB(L-Tec/Linde) parts, but are parts made for and by PROFAX. References to ESAB(L-Tec/Linde) machines, torches and numbers are for your convenience only. We reserve the right to substitute genuine ESAB(L-Tec/Linde) parts in place of PROFAX parts.

* - Not Shown



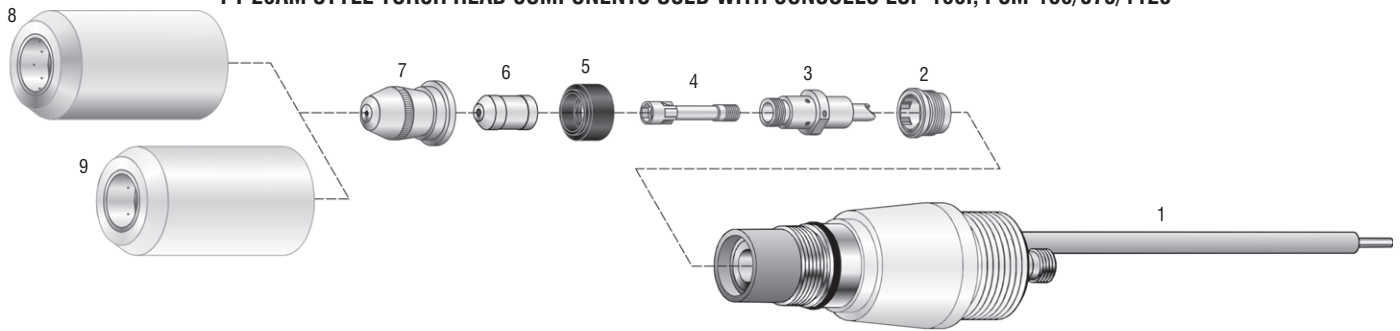
Replacement Parts Suitable For:

Esab® (L-Tec®/Linde®)

PROFAX

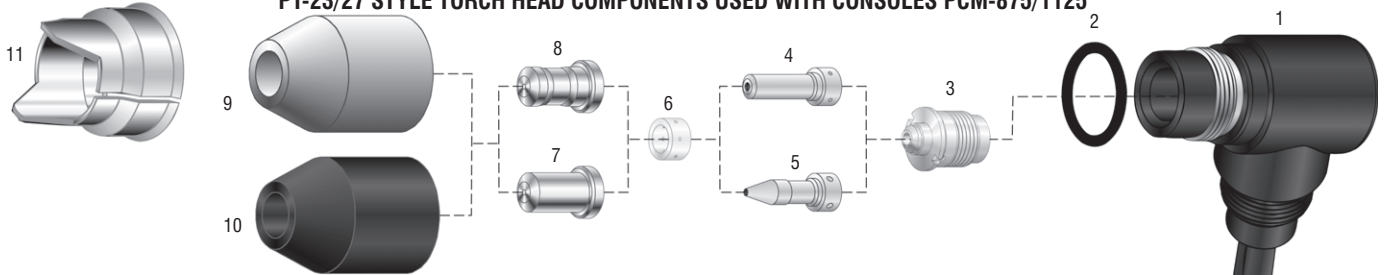
**SECTION
400**

PT-20AM STYLE TORCH HEAD COMPONENTS USED WITH CONSOLES ESP-100I, PCM-150/875/1125



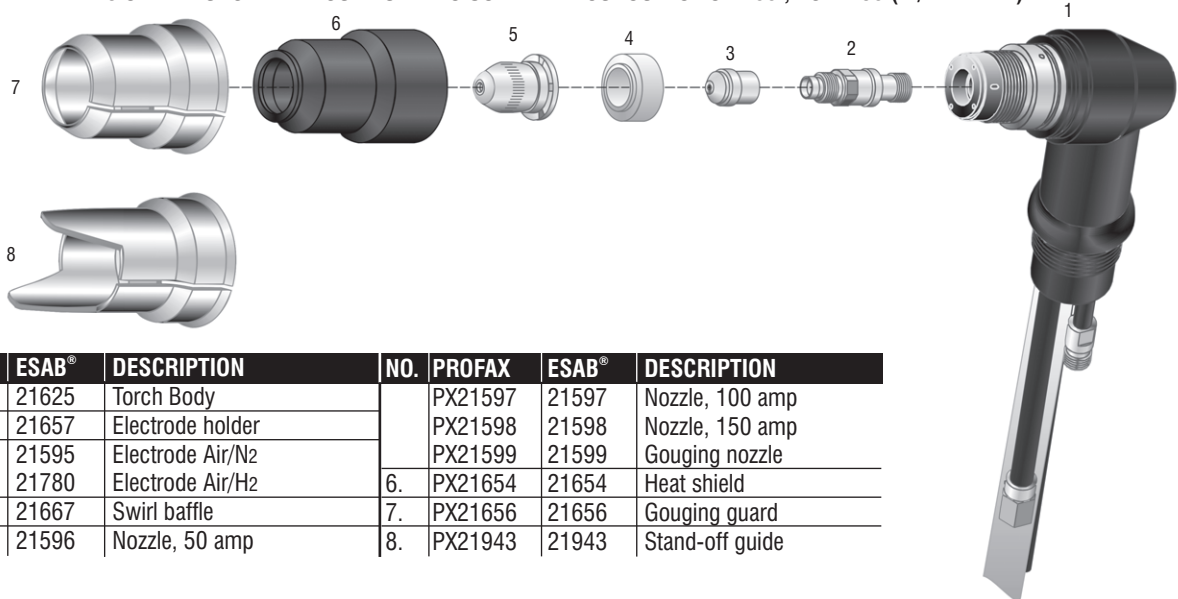
NO.	PROFAX	ESAB®	DESCRIPTION	NO.	PROFAX	ESAB®	DESCRIPTION
1.	PX21359	21359	Torch body	7.	PX21328	21328	Nozzle, 100 amp
2.	PX21372	21372	Electrode seat		PX21329	21329	Nozzle, 70 amp
3.	PX21332	21332	Electrode adapter assembly (Includes 21374)		PX21330	21330	Nozzle, 50 amp
4.	PX21374	21374	Baffle tube		PX37329	37329	Nozzle, 30 amp
5.	PX21373	21373	Insulator	8.	PX21326	21326	Heat shield, 70/100 amp
6.	PX21150	21150	Electrode	9.	PX21447	21447	Heat shield, 50 amp

PT-23/27 STYLE TORCH HEAD COMPONENTS USED WITH CONSOLES PCM-875/1125



NO.	PROFAX	ESAB®	DESCRIPTION	NO.	PROFAX	ESAB®	DESCRIPTION
1.	PX21610	21610	Torch body (PT-27)	8.	PX33418	33418	Cutting nozzle, 80 amp
2.	PX85W51	85W51	O-ring		PX35442	35442	Gouging nozzle
3.	PX0558003032	0558003032	Seat assembly	9.	PX21616	21616	Heat shield (PT-27)
4.	PX33366	33366	Electrode	10.	PX33419	33419	Heat shield (PT-23)
5.	PX33366XL	33366XL	Electrode, extended life	11.	PX21420	21420	Heat shield
6.	PX33367	33367	Swirl baffle	N/S	PX33371	33371	Retaining Nut (PT-23)
7.	PX33368	33368	Cutting nozzle, 30 amp				
	PX33369	33369	Cutting nozzle, 50-70 amp				

PT-25 STYLE TORCH HEAD COMPONENTS USED WITH CONSOLES ESP-100I, PCM-150 (W/ADAPTER)



NO.	PROFAX	ESAB®	DESCRIPTION	NO.	PROFAX	ESAB®	DESCRIPTION
1.	PX21625	21625	Torch Body		PX21597	21597	Nozzle, 100 amp
2.	PX21657	21657	Electrode holder		PX21598	21598	Nozzle, 150 amp
3.	PX21595	21595	Electrode Air/N2		PX21599	21599	Gouging nozzle
	PX21780	21780	Electrode Air/H2	6.	PX21654	21654	Heat shield
4.	PX21667	21667	Swirl baffle	7.	PX21656	21656	Gouging guard
5.	PX21596	21596	Nozzle, 50 amp	8.	PX21943	21943	Stand-off guide

PROFAX is in no way affiliated with ESAB(L-Tec/Linde). The parts advertised for sale are not genuine ESAB(L-Tec/Linde) parts, but are parts made for and by PROFAX. References to ESAB(L-Tec/Linde) machines, torches and numbers are for your convenience only. We reserve the right to substitute genuine ESAB(L-Tec/Linde) parts in place of PROFAX parts.

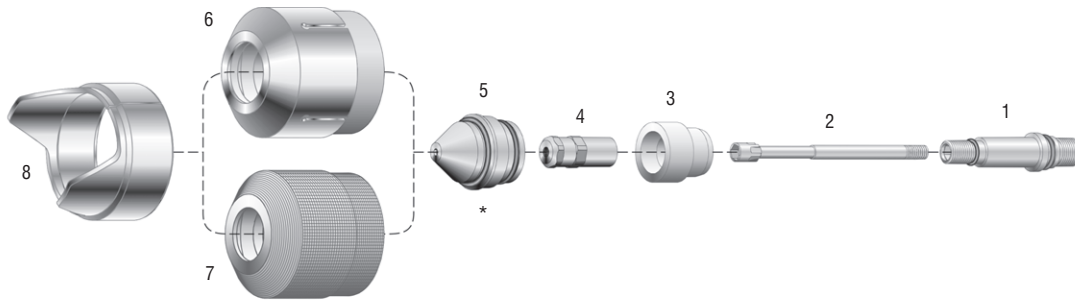


Replacement Parts Suitable For:

Esab® (L-Tec®/Linde®)

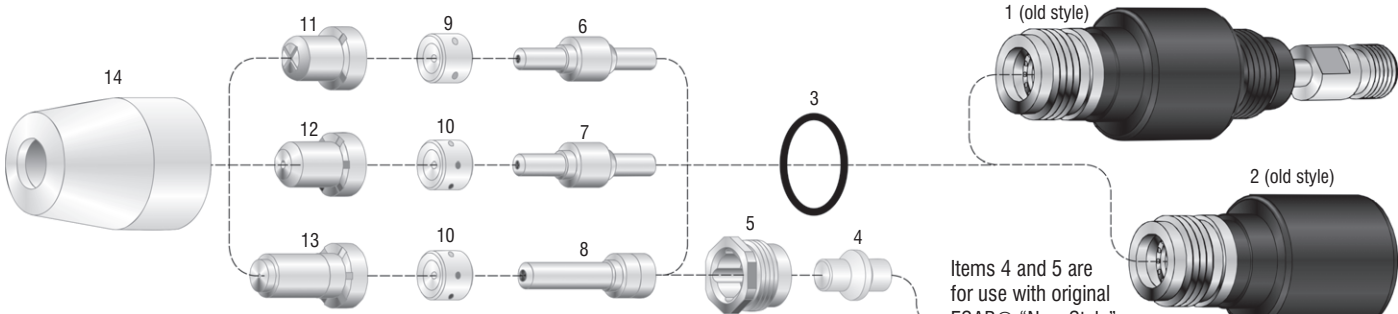
PROFAX SECTION 400

PT-26 STYLE TORCH HEAD COMPONENTS USED WITH CONSOLES ESP-200 & DEUCE PACK 150



NO.	PROFAX	ESAB®	DESCRIPTION	NO.	PROFAX	ESAB®	DESCRIPTION
1.	PX34583	34583	Electrode holder w/85W49 upper & 948317 lower O-rings		PX36569	36569	Cutting nozzle, 200 amp
2.	PX34585	34585	Baffle tube		PX36570	36570	Cutting nozzle, 300 amp
3.	PX34593	34593	Insulator w/84W87 O-ring		PX36571	36571	Gouging nozzle, 200 amp
4.	PX36565	36565	Electrode, N ₂ /H ₂ , O ₂		PX36572	36572	Gouging nozzle, 300 amp
	PX36566	36566	Electrode, AR-H ₂	*	All nozzles come w/2110578 upper & 994092 lower O-rings		
5.	PX36567	36567	Cutting nozzle, 50 amp	6.	PX34592	34592	Heat shield, standard
	PX36568	36568	Cutting nozzle, 150 amp	7.	PX37146	37146	Heat shield, close proximity
				8.	PX36648	36648	Guide, stand-off

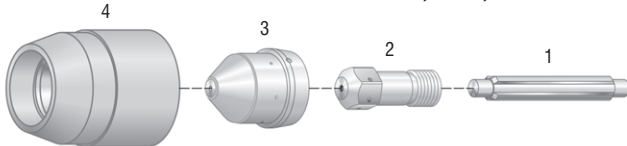
PT-31 & PT-31XL STYLE TORCH HEAD COMPONENTS USED WITH CONSOLES PCM-500I/875



CAUTION! - Torch heads do not have a consumable replacement safety switch. Power source must be off when replacing consumables.

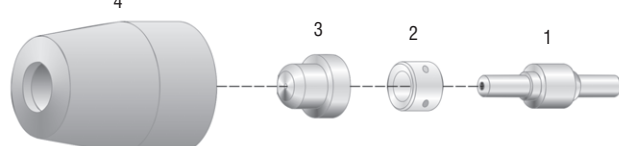
NO.	PROFAX	ESAB®	DESCRIPTION	NO.	PROFAX	ESAB®	DESCRIPTION
1.	PX20073	20073	31 machine torch (w/out safety)	11.	PX18866	18866	Tip, 30 amp, 4 stakes
2.	PX20072	20072	31 hand torch (w/out safety)		PX18820	18820	Tip, 50 amp, 4 stakes
3.	PX950790	950790	O-ring	12.	PX19682	19682	Tip HD, 30 amp, 6 stakes
4.	PX20324	20324	Plunger HD (new style) XT		PX20079	20079	Tip, 50 amp, 6 stakes
5.	PX19679	19679	Seat, torch (new style)	13.	PX20860	20860	Tip, 30 amp, XT
6.	PX18205	18205	Electrode		PX21008	21008	Tip, 40 amp, XT
7.	PX19683	19683	Electrode HD, 30-50 amp		PX20861	20861	Tip, 50 amp, XT
8.	PX20862	20862	Electrode, XT	14.	PX18204	18204	Shield cup, ceramic
9.	PX18785	18785	Swirl baffle, 4 holes		PX20282	20282	Heat shield HD, non ceramic, XL & XT
10.	PX20463	20463	Swirl baffle, 30-50 amp, 6 Holes, XL & XT		PX18844	18844	Heat shield, 50 Amp

PT-32 STYLE TORCH HEAD COMPONENTS USED WITH CONSOLES POWER CUT 875, 1125, 1500



NO.	PROFAX	ESAB®	DESCRIPTION
1.	PX0558001959	0558001959	Pin, valve
2.	PX0558001969	0558001969	Electrode
3.	PX0558002908	0558002908	Nozzle, 40 amp (875, 1125, 1500)
	PX0558002618	0558002618	Nozzle, 50/70 amp (875/1125)
	PX0558002837	0558002837	Nozzle, 90 amp (1500)
4.	PX0558001957	0558001957	Heat shield

PT-34 STYLE TORCH HEAD COMPONENTS USED WITH CONSOLES HP125

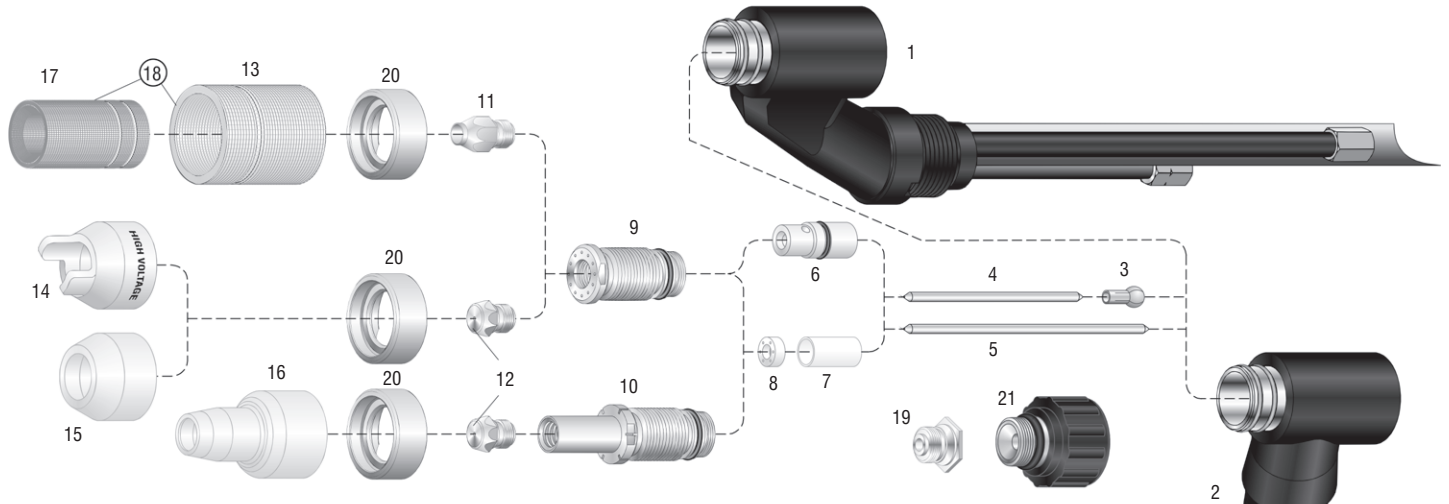


NO.	PROFAX	ESAB®	DESCRIPTION
1.	PX37888	37888	Electrode
2.	PX18785	18785	Swirl baffle, 4 holes
3.	PX37887	37887	Tip, 12 amp
4.	PX20282	20282	Heat shield

PROFAX is in no way affiliated with ESAB(L-Tec/Linde). The parts advertised for sale are not genuine ESAB(L-Tec/Linde) parts, but are parts made for and by PROFAX. References to ESAB(L-Tec/Linde) machines, torches and numbers are for your convenience only. We reserve the right to substitute genuine ESAB(L-Tec/Linde) parts in place of PROFAX parts.

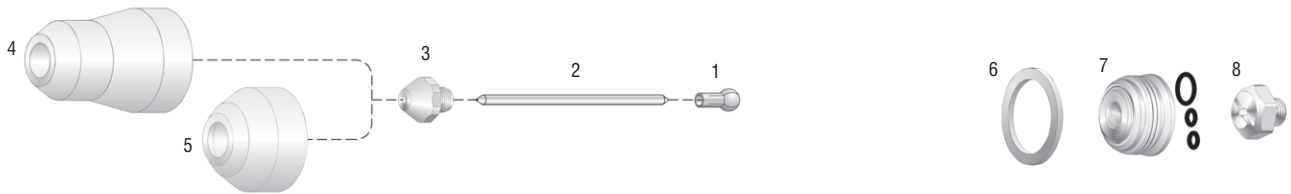


PT-121 STYLE TORCH HEAD COMPONENTS USED WITH CONSOLE PCM-150



NO.	PROFAX	ESAB®	DESCRIPTION	NO.	PROFAX	ESAB®	DESCRIPTION
1.	PX999270	999270	Machine torch		PX999264	999264	Tip .063, 150 amp
2.	PX999248	999248	Hand torch (75°)		PX17119	17119	Tip .047, 55 amp
3.	PX999259	999259	Collet		PX17184	17184	Tip .032, 30 amp
	PX19654	19654	Collet	13.	PX20379	20379	Heat shield gouging adapter
4.	PX2075328	2075328	Electrode	14.	PX18419	18419	Heat shield drag 120 amp
5.	PX18362	18362	Electrode long, 250 amp	15.	PX999261	999261	Heat shield standard
6.	PX19691	19691	Baffle, Hi-current	16.	PX18363	18363	Heat shield, long
7.	PX999586	999586	Spacer	17.	PX20380	20380	Heat shield gouging
8.	PX999265	999265	Baffle, w/heat sink		PX31411	31411	Gouging shield, long
	PX19540	19540	Baffle, w/heat sink	18.	PX20378	20378	Heat shield gouging assembly
9.	PX19690	19690	High current insert	19.	PX999266	999266	Electrode centering tool
	PX999260	999260	Insert, front body	20.	PX21121	21121	Insulator band
10.	PX18364	18364	Insert, long	21.	PX999257	999257	Shroud cap assembly
11.	PX19160	19160	Gouging tip, 150 amp	*	PX96W97	96W97	O-ring
	PX20386	20386	Gouging tip, 70 amp	*	PX994092	994092	O-ring
	PX20387	20387	Gouging tip, 100 amp				
12.	PX999263	999263	Tip .055, 110 amp				

PT-251 STYLE TORCH HEAD COMPONENTS USED WITH CONSOLE DEUCE PACK 150



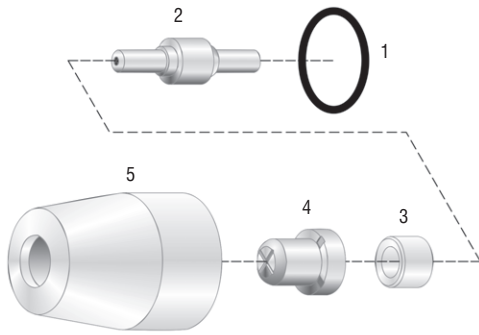
NO.	PROFAX	ESAB®	DESCRIPTION	NO.	PROFAX	ESAB®	DESCRIPTION
1.	PX948175	948175	Collet		PX19161	19161	Gouging tip
2.	PX2075328	2075328	Electrode, 150 amp	4.	PX20070	20070	Heat shield
	PX997784	997784	Electrode, 250 amp	5.	PX948186	948186	Heat shield cup
	PX21441	21441	Cutting electrode 5/32", 300 amp	6.	PX948179	948179	Gasket
3.	PX2075155	2075155	Nozzle tip, 1.4mm	7.	PX948174	948174	Front body assembly
	PX2075271	2075271	Nozzle tip, 1.6mm	8.	PX948178	948178	Center adjustment tool
	PX997783	997783	Nozzle tip, 2.0mm	*	PX86W99	86W99	O-ring
	PX21442	21442	Cutting tip .093				

PROFAX is in no way affiliated with ESAB(L-Tec/Linde). The parts advertised for sale are not genuine ESAB(L-Tec/Linde) parts, but are parts made for and by PROFAX. References to ESAB(L-Tec/Linde) machines, torches and numbers are for your convenience only. We reserve the right to substitute genuine ESAB(L-Tec/Linde) parts in place of PROFAX parts.

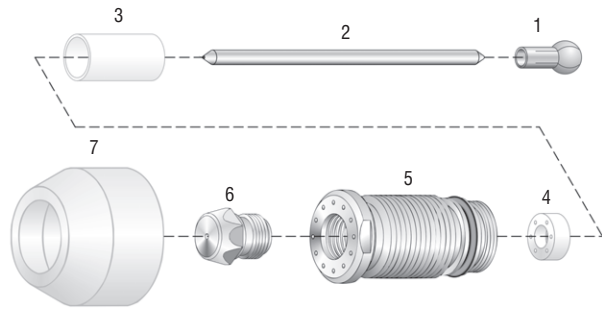
* - Not Shown



HSC 30A STYLE TORCH HEAD COMPONENTS



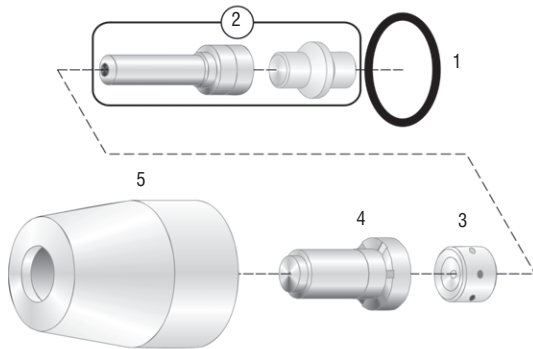
TP-12 STYLE TORCH HEAD COMPONENTS



NO.	PROFAX	HOBART®	DESCRIPTION
1.	PX450659	450659	O-ring
2.	PX450658	450658	Electrode
3.	PX450660	450660	Swirl baffle
4.	PX450657	450657	Tip
5.	PX450656	450656	Shield cup

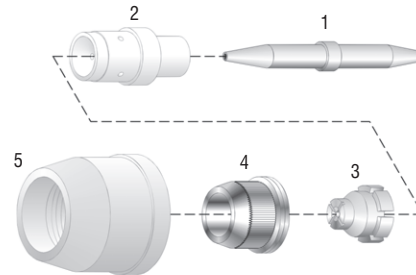
NO.	PROFAX	HOBART®	DESCRIPTION
1.	PX450518	450518	Collet
2.	PX450510	450510	Electrode
3.	PX450575	450575	Spacer
4.	PX450517	450517	Swirl baffle
5.	PX450574	450574	Insert, front body
6.	PX450570	450570	Tip .047, 50 amp
	PX450600	450600	Tip .056, 120 amp
7.	PX450511	450511	Heat shield
*	PX450519	450519	Gasket
*	PX450522	450522	O-ring

SMOOTH CUT 625 STYLE TORCH HEAD COMPONENTS (TORCH ST-50A)



NO.	PROFAX	HOBART®	DESCRIPTION
1.	PX450659	450659	O-ring
2.	PX204444-4	204444-4	Electrode and plunger
3.	PX204444-3	204444-3	Swirl baffle
4.	PX204444-2	204444-2	Nozzle 50 amp
5.	PX204444-1	204444-1	Shield

TP-6A/TP-10A STYLE TORCH HEAD COMPONENTS



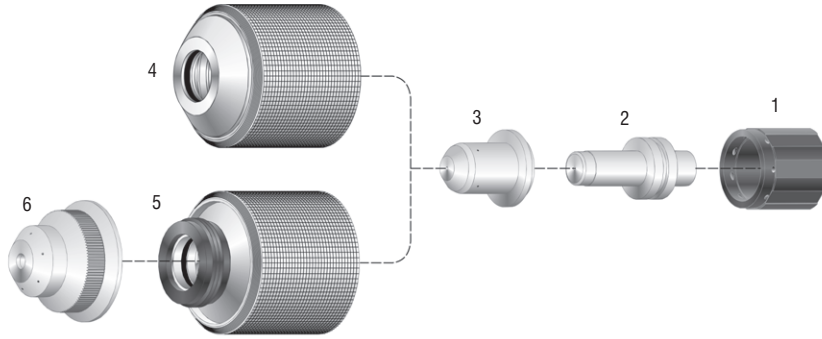
NO.	PROFAX	HOBART®	DESCRIPTION
1.	PX409266	409266	Electrode (TP-6A)
	PX409267	409267	Electrode (TP-10A)
2.	PX409264	409264	Nozzle insulator (TP-6A)
	PX409249	409249	Nozzle insulator (TP-10A)
3.	PX409262	409262	Nozzle/tip (TP-6A)
	PX409263	409263	Nozzle/tip (TP-10A)
4.	PX409276	409276	Nozzle guide (TP-6A)
	PX409277	409277	Nozzle guide (TP-10A)
5.	PX409261	409261	Nozzle cap (TP-6A)

PROFAX is in no way affiliated with HOBART. The parts advertised for sale are not genuine HOBART parts, but are parts made for and by PROFAX. References to HOBART machines, torches and numbers are for your convenience only. We reserve the right to substitute genuine HOBART parts in place of PROFAX parts.

* - Not Shown

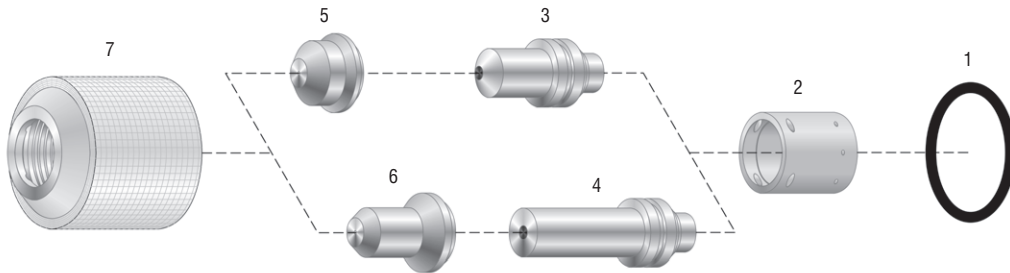


POWERMAX® 190C STYLE TORCH HEAD COMPONENTS (PAC® 105)



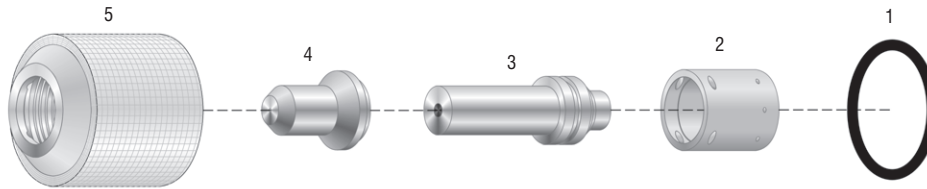
NO.	PROFAX	HYPERTHERM®	DESCRIPTION	NO.	PROFAX	HYPERTHERM®	DESCRIPTION
1.	PX120880	120880	Swirl ring	4.	PX120883	120883	Retaining cap
2.	PX120881	120881	Electrode	5.	PX120898	120898	Shield cap
3.	PX120882	120882*	Nozzle	6.	PX120884	120884*	Shield

MAX 20 STYLE TORCH HEAD COMPONENTS (PAC® 110)



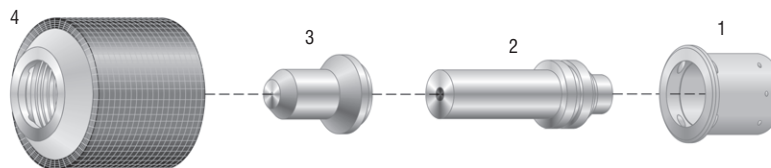
NO.	PROFAX	HYPERTHERM®	DESCRIPTION	NO.	PROFAX	HYPERTHERM®	DESCRIPTION
1.	PX044016	044016	O-ring	5.	PX020299	020299	Nozzle .029 (0.73mm)
2.	PX020239	020239	Swirl ring		PX020219	020219	Nozzle, .031
3.	PX020220	020220	Electrode	6.	PX020381	020381	Nozzle, extended, .029
4.	PX020382	020382	Electrode, extended	7.	PX020218	020218	Retaining cap

POWERMAX® 350 STYLE TORCH HEAD COMPONENTS (PAC® 110)



NO.	PROFAX	HYPERTHERM®	DESCRIPTION	NO.	PROFAX	HYPERTHERM®	DESCRIPTION
1.	PX044016	044016	O-ring	4.	PX120504	120504	Nozzle, extended, 25 amp
2.	PX020239	020239	Swirl ring	5.	PX020218	020218	Retaining cap
3.	PX020382	020382	Electrode, extended				

POWERMAX® 380 STYLE TORCH HEAD COMPONENTS (PAC® 110T)

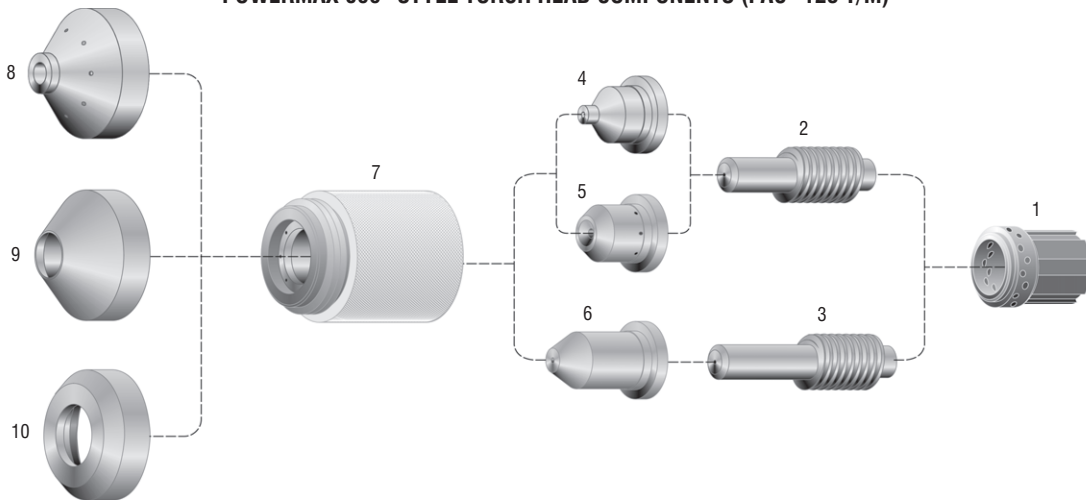


NO.	PROFAX	HYPERTHERM®	DESCRIPTION	NO.	PROFAX	HYPERTHERM®	DESCRIPTION
1.	PX220013	220013	Swirl ring	3.	PX120504	120504	Nozzle, extended, 25 amp
2.	PX020382	020382	Electrode extended	4.	PX220016	220016	Retaining cap

PROFAX is in no way affiliated with HYPERTHERM, Inc. References to the above-named machines, torches, consumables, and reference numbers are for convenience only. PROFAX products are manufactured for or by PROFAX. Parts indicated with an asterik (*) are original HYPERTHERM parts manufactured by HYPERTHERM and are being resold by PROFAX. PROFAX reserves the right to substitute HYPERTHERM parts in place of PROFAX parts.

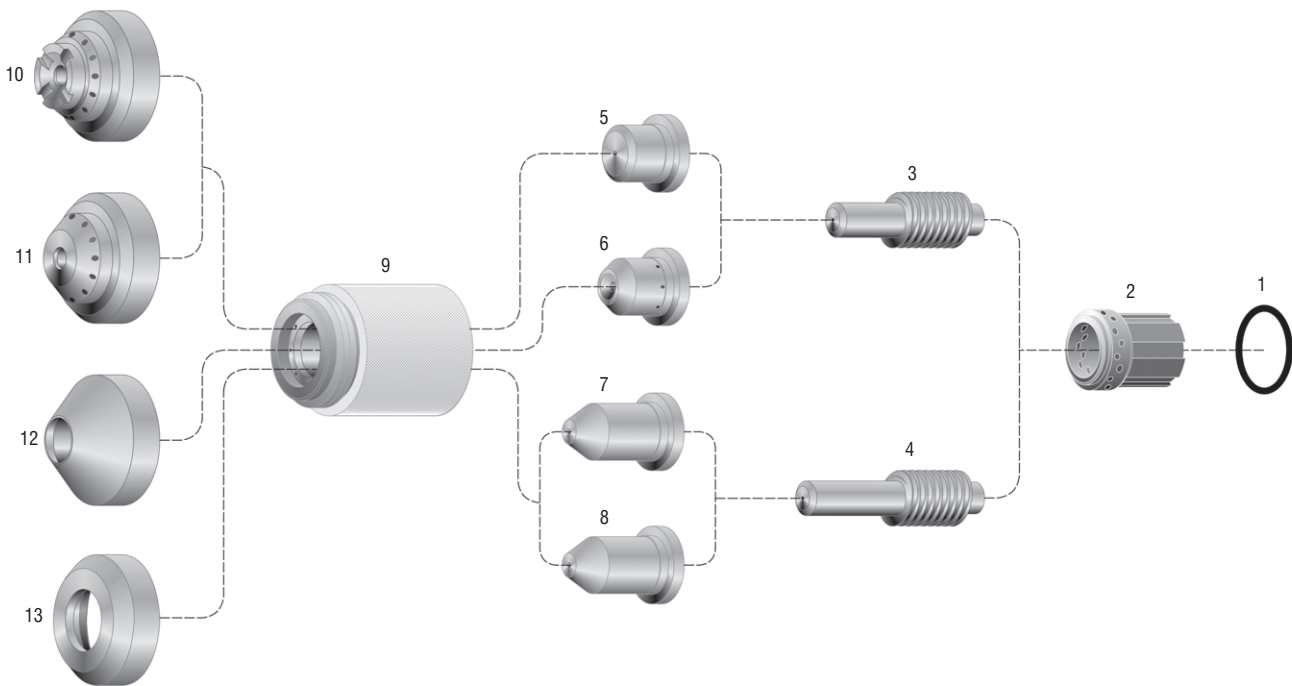


POWERMAX 600® STYLE TORCH HEAD COMPONENTS (PAC® 123 T/M)



NO.	PROFAX	HYPERTHERM®	DESCRIPTION	NO.	PROFAX	HYPERTHERM®	DESCRIPTION
1.	PX120576	120576	Swirl ring	7.	PX120600	120600	Shield cap
2.	PX120573	120573*	Electrode, air	8.	PX120827	120827*	Shield, machine
3.	PX120574	120574*	Electrode, extended		PX120828	120828*	Shield, hand
4.	PX120826	120826	Nozzle	9.	PX120608	120608	Shield, gouging
5.	PX120831	120831	Nozzle, gouging	10.	PX120303	120303	Deflector
6.	PX120606	120606	Nozzle pipe saddle, 35 amp, ext.				

POWERMAX 800® PAC 121/POWERMAX 900® PAC 125 STYLE TORCH HEAD COMPONENTS

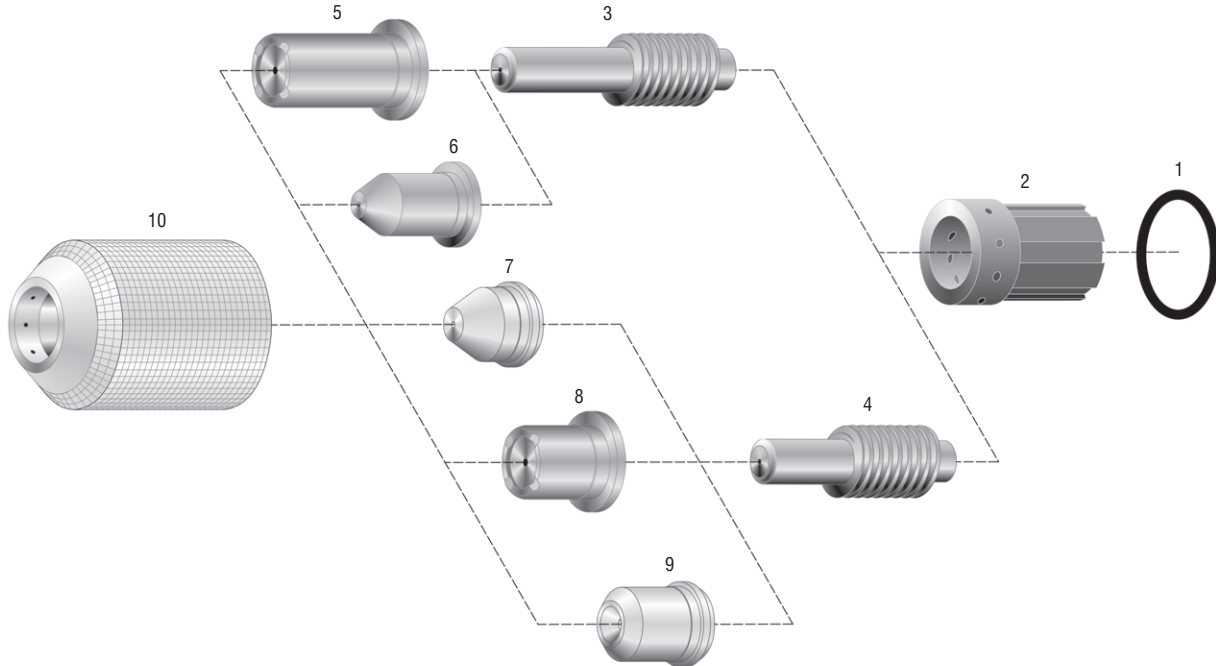


NO.	PROFAX	HYPERTHERM®	DESCRIPTION	NO.	PROFAX	HYPERTHERM®	DESCRIPTION
1.	PX044016	044016	O-ring	7.	PX120578	120578*	Nozzle pipe saddle, 55 amp, 900, ext.
2.	PX020361	020361	Swirl ring, 800		PX120305	120305	Nozzle pipe saddle, 55 amp, 800
	PX120576	120576	Swirl ring, 900	8.	PX120606	120606*	Nozzle pipe saddle, 35 amp, 900, ext.
3.	PX120573	120573	Electrode, air		PX120438	120438	Nozzle pipe saddle, 35 amp, 800
4.	PX120574	120574	Electrode, extended	9.	PX120600	120600	Shield cap
5.	PX120577	120577	Nozzle, 55 amp, 900	10.	PX120601	120601*	Shield, hand
	PX120282	120282	Nozzle, 55 amp, 800	11.	PX120602	120602*	Shield, machine
6.	PX120607	120607	Nozzle, gouging, 900	12.	PX120608	120608	Shield, gouging
	PX120281	120281	Nozzle, gouging, 800	13.	PX120303	120303	Deflector

PROFAX is in no way affiliated with HYPERTHERM, Inc. References to the above-named machines, torches, consumables, and reference numbers are for convenience only. PROFAX products are manufactured for or by PROFAX. Parts indicated with an asterisk (*) are original HYPERTHERM parts manufactured by HYPERTHERM and are being resold by PROFAX. PROFAX reserves the right to substitute HYPERTHERM parts in place of PROFAX parts.

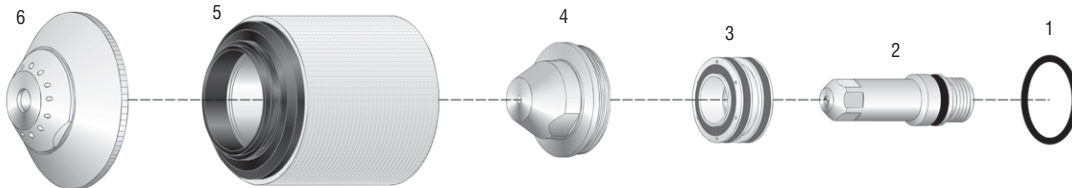


MAX 40CS/MAX 42/MAX 43 STYLE TORCH HEAD COMPONENTS (PAC® 120/121)



NO.	PROFAX	HYPERTHERM®	DESCRIPTION	NO.	PROFAX	HYPERTHERM®	DESCRIPTION
1.	PX044016	044016	O-ring	7.	PX120092	120092	Nozzle pipe saddle
2.	PX020361	020361	Swirl ring	8.	PX020350	020350	Nozzle, .038
3.	PX120574	120574	Electrode, extended		PX020395	020395	Nozzle, .042
4.	PX120573	120573	Electrode	9.	PX020539	020539	Nozzle, gouging
5.	PX020546	020546	Nozzle, extended, .038	10.	PX020930	020930	Retaining cap
6.	PX120023	120023	Nozzle pipe saddle, long				

MAX200 STYLE TORCH HEAD COMPONENTS (PAC® 200)

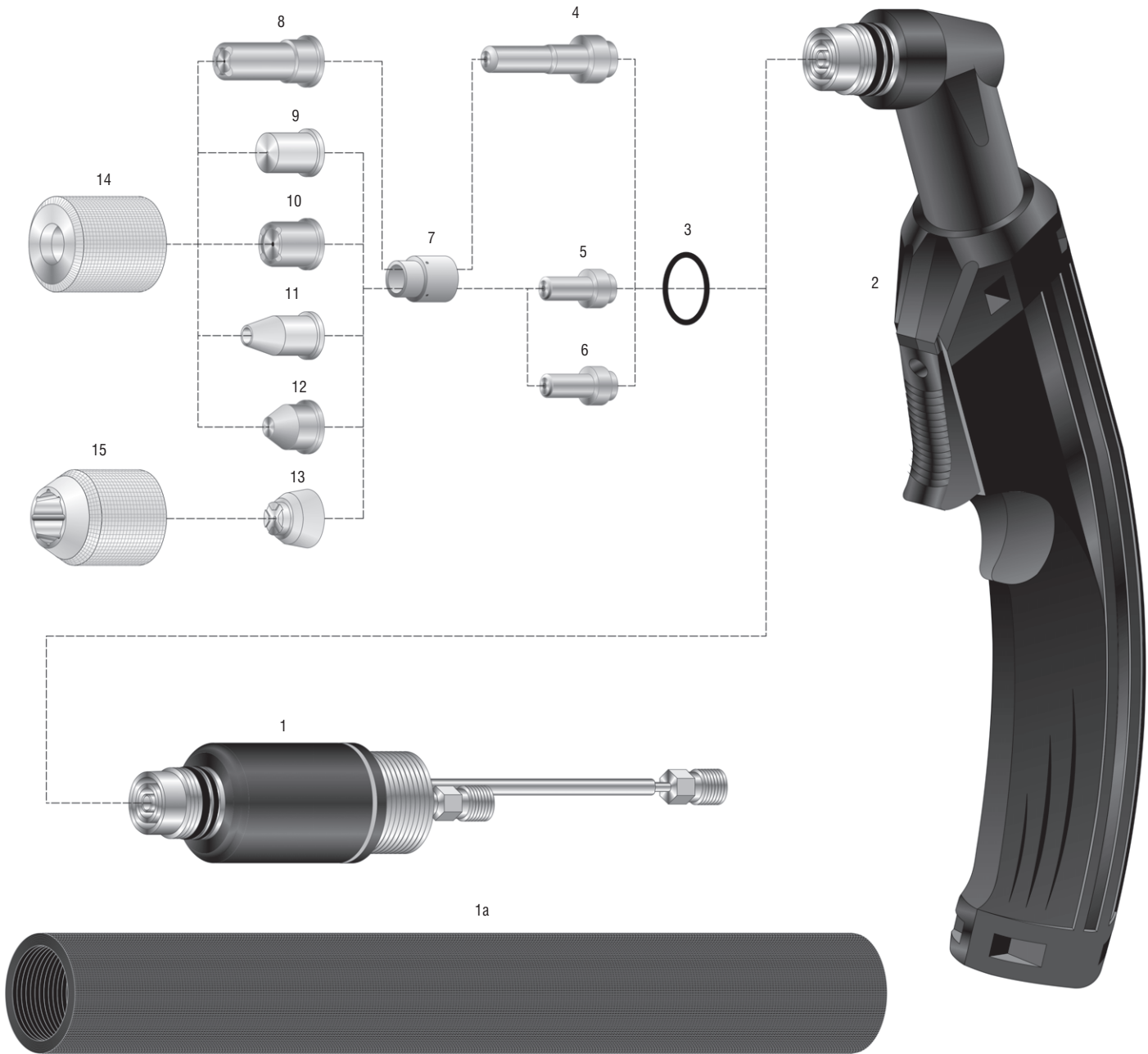


NO.	PROFAX	HYPERTHERM®	DESCRIPTION	NO.	PROFAX	HYPERTHERM®	DESCRIPTION
1.	PX044027	044027	O-ring	6.	PX020424	020424*	Shield, cutting, all plasma gases, machine 200 amp
2.	PX120667	120667*	Electrode, hylife, oxygen		PX020448	020448*	Shield, cutting, all plasma gases, machine 100 amp
	PX220021	220021*	Electrode, hylife, oxygen		PX020602	020602*	Shield, cutting, argon/hydrogen, machine 200 amp
	PX020414	020414	Electrode, oxygen, air, 40, 100, or 200 amp		PX020485	020485	Shield, gouging, all plasma gases, machine 200 amp
	PX020415	020415	Electrode, nitrogen, argon/hydrogen, 40, 100, or 200 amps		PX020446	020446*	Shield, drag, all plasma gases, 200 amp
3.	PX020613	020613*	Swirl ring, air, 40 amps		PX020566	020566*	Shield, water muffler, oxygen, air, nitrogen, machine 200 amps
	PX020607	020607*	Swirl ring, air, nitrogen, argon/hydrogen, 100 or 200 amps		PX020618	020618*	Shield, water muffler, oxygen, air, nitrogen, machine 100 amps
	PX020604	020604*	Swirl ring, oxygen, 200 amps		PX020688	020688	Shield, air, machine 40 amp
	PX020617	020617*	Swirl ring, oxygen, 100 amps		PX020917	020917	Shield, 40 amp, air, hand
4.	PX020605	020605	Nozzle, oxygen, 200 amps, .082		PX020918	020918*	Shield, 200 amp, mild steel, hand
	PX020616	020616*	Nozzle, oxygen, 100 amps, .055		PX020919	020919*	Shield, 100 amp, hand
	PX020608	020608	Nozzle, air, nitrogen, argon/hydrogen, 200 amps, .086		PX020920	020920*	Shield, 200 amp, stainless, hand
	PX020611	020611*	Nozzle, air, argon/hydrogen, 100 amps, .059	N/S	PX020431	020431	Insulating sleeve
	PX020615	020615	Nozzle, gouging, 200 amps	N/S	PX027055	027055	Lubricant 1/4 oz.
	PX020689	020689*	Nozzle, air, 40 amps				
5.	PX020423	020423	Retaining cap machine torch				
	PX020915	020915	Retaining cap hand torch				

PROFAX is in no way affiliated with HYPERTHERM, Inc. References to the above-named machines, torches, consumables, and reference numbers are for convenience only. PROFAX products are manufactured for or by PROFAX. Parts indicated with an asterisk (*) are original HYPERTHERM parts manufactured by HYPERTHERM and are being resold by PROFAX. PROFAX reserves the right to substitute HYPERTHERM parts in place of PROFAX parts.



MAX40 AND HT40 STYLE TORCH HEAD COMPONENTS (PAC® 140)

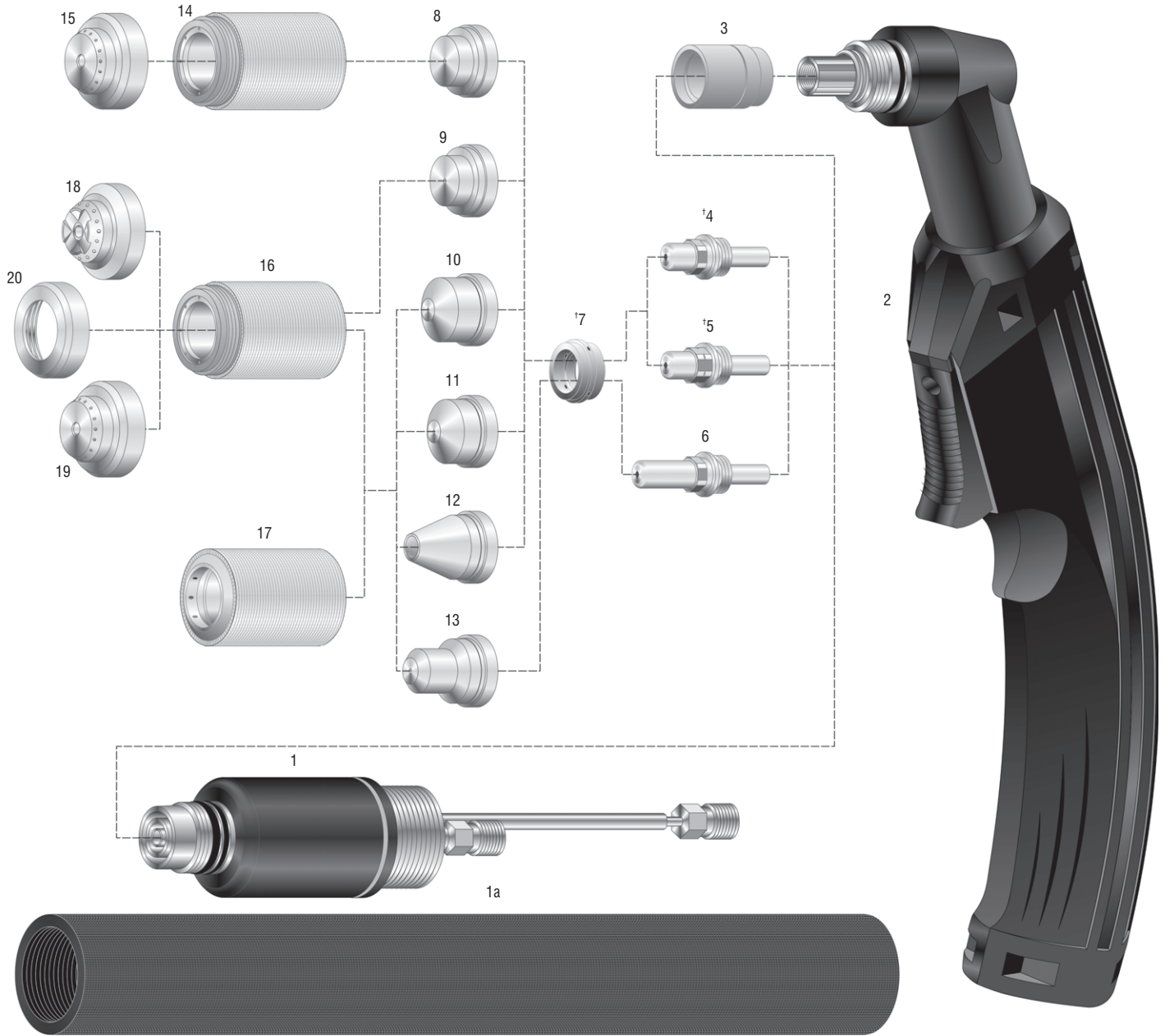


NO.	PROFAX	HYPERTHERM®	DESCRIPTION	NO.	PROFAX	HYPERTHERM®	DESCRIPTION
	PX057112	057112	Hand torch w/25' cable	6.	PX020103	020103	Electrode, air
	PX057113	057113	Hand torch w/50' cable	7.	PX020101	020101	Swirl ring
	PX057053	057053	Machine torch w/25' cable	8.	PX020466	020466	Nozzle, extended (MAX40)
	PX057054	057054	Machine torch w/50' cable	9.	PX020102	020102	Nozzle, 40 amp
1.	PX020114	020114	Torch body, machine	10.	PX020115	020115	Nozzle (MAX40)
1a.	PX020205	020205	Handle for machine torch	11.	PX020340	020340	Nozzle, gouging (MAX40)
2.	PX057114	057114	Torch body, hand, 70°, w/handle & switch	12.	PX020131	020131	Nozzle pipe saddle
3.	PX044016	044016	O-ring (MAX40)	13.	PX020197	020197	Nozzle, hi-visibility
4.	PX020467	020467	Electrode, extended (MAX40)	14.	PX020104	020104	Retaining cap standard
5.	PX020167	020167	Electrode, nitrogen (HT40)	15.	PX020200	020200	Retaining cap hi-visibility (MAX40)

PROFAX is in no way affiliated with HYPERTHERM, Inc. References to the above-named machines, torches, consumables, and reference numbers are for convenience only. PROFAX products are manufactured for or by PROFAX. Parts indicated with an asterisk (*) are original HYPERTHERM parts manufactured by HYPERTHERM and are being resold by PROFAX. PROFAX reserves the right to substitute HYPERTHERM parts in place of PROFAX parts.



MAX 70/80/100 STYLE TORCH HEAD COMPONENTS (PAC® 130)



NO.	PROFAX	HYPERTHERM®	DESCRIPTION	NO.	PROFAX	HYPERTHERM®	DESCRIPTION	
	PX059076	059076	Hand torch w/25' cable		PX020337	020337	Nozzle, shield, 100 amp(MAX100)	
	PX059077	059077	Hand torch w/50' cable	10.	PX020345	020345	Nozzle, standard, 80 amp	
	PX059008	059008	Machine torch w/25' cable		PX020195	020195	Nozzle, standard,100 amp (MAX100)	
	PX059009	059009	Machine torch w/50' cable	11.	PX020203	020203	Nozzle, gouging, 40 amp	
1.	PX020201	020201	Torch body, machine	12.	PX020339	020339	Nozzle, gouging	
1a.	PX020244	020244	Handle for machine torch	13.	PX020563	020563	Nozzle, extended	
2.	PX020189	020189	Torch body, hand, 70°, complete w/handle & switch	14.	PX020490	020490	Shield cap, 40 amp	
3.	PX020189-1	020189-1	Front insulator	15.	PX020492	020492*	Machine shield, 40 amp	
†4.	PX120433	120433*	Electrode, air	16.	PX020336	020336*	Shield cap, 80/100 amp	
†5.	PX020193	020193	Electrode, nitrogen	17.	PX020184	020184	Standard retaining cap	
6.	PX020564	020564	Electrode, extended	18.	PX020335	020335*	Hand shield	
†7.	PX020194	020194	Swirl ring	19.	PX020334	020334*	Machine shield, 80/100 amp	
8.	PX020396	020396	Nozzle, shield, 40 amp	20.	PX020333	020333	Deflector, gouging	
9.	PX020397	020397	Nozzle, shield, 80 amp (MAX80)		N/S	PX026018	026018	O-ring-torch head

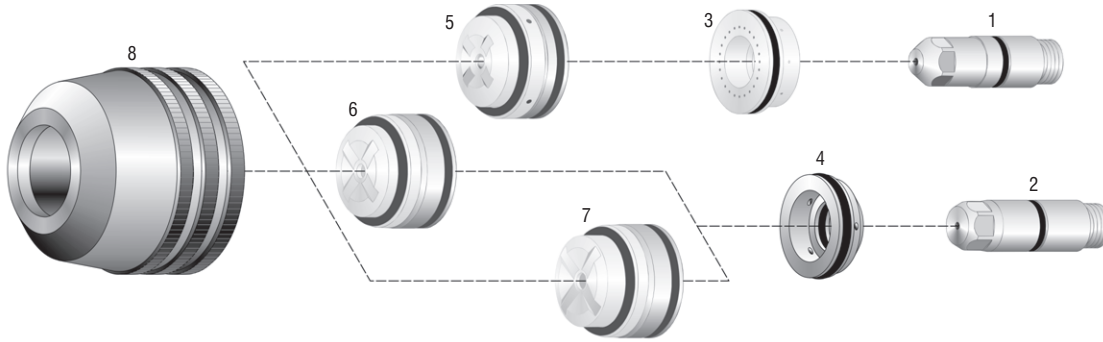
PROFAX is in no way affiliated with HYPERTHERM, Inc. References to the above-named machines, torches, consumables, and reference numbers are for convenience only. PROFAX products are manufactured for or by PROFAX. Parts indicated with an asterisk (*) are original HYPERTHERM parts manufactured by HYPERTHERM and are being resold by PROFAX. PROFAX reserves the right to substitute HYPERTHERM parts in place of PROFAX parts.

N/S - Not Shown

† - To be used with all of the part combinations listed above.

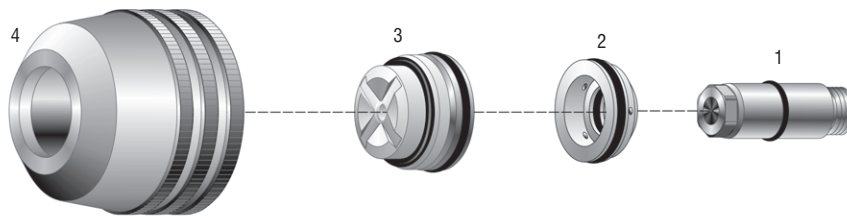


HT400 STYLE TORCH HEAD COMPONENTS



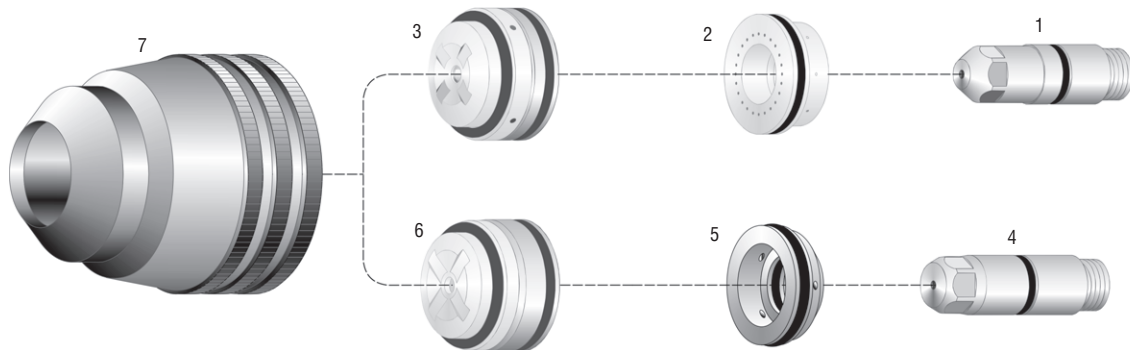
NO.	PROFAX	HYPERTHERM®	DESCRIPTION	NO.	PROFAX	HYPERTHERM®	DESCRIPTION
1.	PX020081	020081	Electrode, oxygen w/o-ring	5.	PX020086	020086	Nozzle, oxygen, .099
2.	PX020082	020082	Electrode, nitrogen w/o-ring	6.	PX020089	020089	Nozzle, nitrogen, .120
3.	PX020096	020096*	Swirl ring, oxygen, .099 w/o-ring	7.	PX020084	020084	Nozzle, nitrogen, .166
	PX020097	020097*	Swirl ring, oxygen, CCW	8.	PX020579	020579	Nozzle retaining cap
4.	PX020039	020039	Swirl ring, nitrogen, .120, .166, .187 w/o-ring				

PAC500 STYLE TORCH HEAD COMPONENTS



NO.	PROFAX	HYPERTHERM®	DESCRIPTION	NO.	PROFAX	HYPERTHERM®	DESCRIPTION
1.	PX020038	020038	Electrode w/O-ring		PX020036	020036	Nozzle, .187
2.	PX020039	020039	Swirl ring, .120, .166, .187 w/O-ring		PX020037	020037	Nozzle, .220
3.	PX020050	020050	Nozzle, .120		PX020047	020047	Nozzle, .250
	PX020035	020035	Nozzle, .166	4.	PX020034	020034	Nozzle retaining cap tapered

PAC600 STYLE TORCH HEAD COMPONENTS

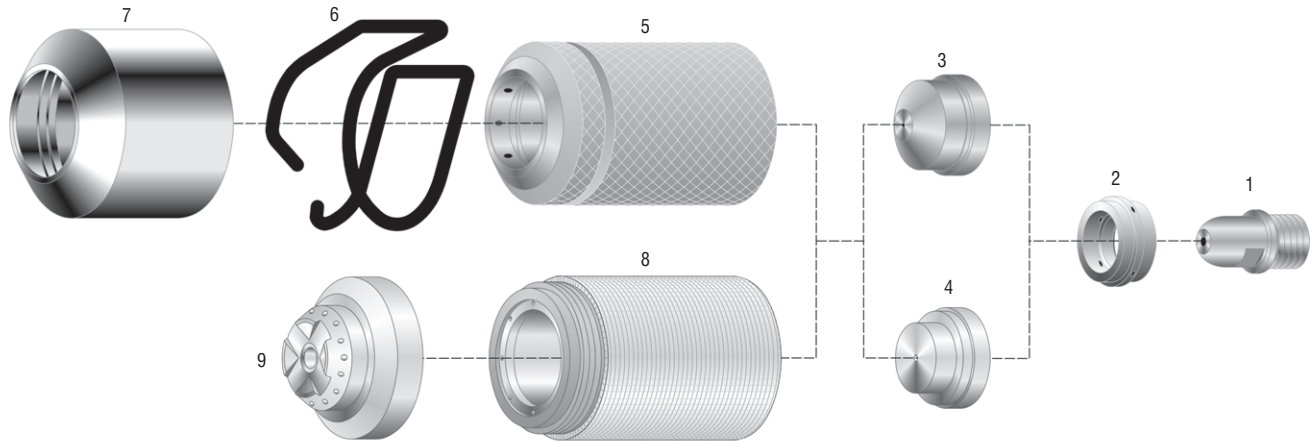


NO.	PROFAX	HYPERTHERM®	DESCRIPTION	NO.	PROFAX	HYPERTHERM®	DESCRIPTION
1.	PX020081	020081	Electrode, oxygen	6.	PX020281	020281	Nozzle, nitrogen, .120
2.	PX020096	020096	Swirl ring, oxygen, .099		PX020282	020282	Nozzle, nitrogen, .166
	PX020097	020097	Swirl ring CCW, oxygen, .099		PX020283	020283	Nozzle, nitrogen, .187
3.	PX020086	020086	Nozzle, oxygen, .099		PX020284	020284	Nozzle, nitrogen, .220
4.	PX020285	020285	Electrode, nitrogen	7.	PX020580	020580	Retaining cap, tapered
5.	PX020039	020039	Swirl ring, nitrogen, .120, .166, .187				

PROFAX is in no way affiliated with HYPERTHERM, Inc. References to the above-named machines, torches, consumables, and reference numbers are for convenience only. PROFAX products are manufactured for or by PROFAX. Parts indicated with an asterisk (*) are original HYPERTHERM parts manufactured by HYPERTHERM and are being resold by PROFAX. PROFAX reserves the right to substitute HYPERTHERM parts in place of PROFAX parts.

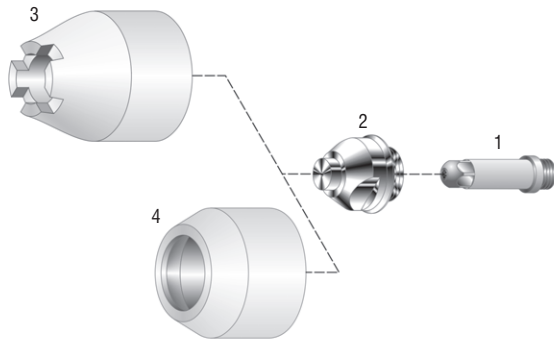


MAG PCT-125 STYLE TORCH HEAD COMPONENTS



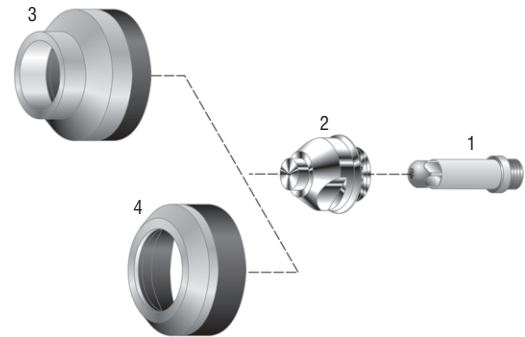
NO.	PROFAX	LINCOLN®	NEW LINCOLN®	DESCRIPTION	NO.	PROFAX	LINCOLN®	NEW LINCOLN®	DESCRIPTION
1.	PXS19962	S19962	KP2043-1	Electrode	5.	PXS19964	S19964	KP2045-1	Shield cup assembly
2.	PXS19963	S19963	KP2044-1	Swirl ring - VESPEL®	6.	PXS19972	S19972	KP2046-1	Standard guide
3.	PXS19961-2	S19961-2	KP2042-1	Nozzle tip 1.4mm	7.	PXS19975	S19975	KP2047-1	Gouging spacer
	PXS19961-3	S19961-3	KP2042-2	Nozzle tip 1.7mm	8.	PXS19973	S19973		Contact cutting insulator
4.	PXS19961-4	S19961-4	KP2042-3	Nozzle tip 1.9mm	9.	PXS19974	S19974		Contact cutting attachment
	PXS19961-5	S19961-5	KP2042-4	Gouging nozzle 3.0mm					

TORCH HEAD COMPONENTS FOR LINCOLN PROCUT® 40 TORCH



NO.	PROFAX	LINCOLN®	NEW LINCOLN®	DESCRIPTION
1.	PXM-15615-3	M-15615-3	KP1927-4	Electrode
2.	PXM-15615-2	M-15615-2	KP1927-2	Tip
3.	PXM-15615-9	M-15615-9	KP1927-3	Drag cup
4.	PXM-15615-1	M-15615-1	KP1927-1	Shield cup

**TORCH HEAD COMPONENTS FOR LINCOLN®
PCT 60 MAGNUM™ TORCH**

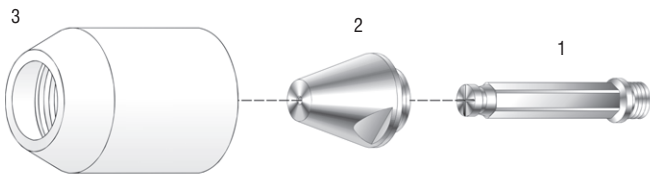


NO.	PROFAX	LINCOLN®	NEW LINCOLN®	DESCRIPTION
1.	PXS18752	S18752	KP2012-1	Electrode
2.	PXS18497-1	S18497-1	KP2008-1	Tip .09mm .035
	PXS18497-2	S18497-2	KP2008-2	Tip 1.1mm .042
	PXS18497-3	S18497-3	KP2008-3	Tip 1.3mm .052
	PXS18497-4	S18497-4	KP2008-4	Tip 2.0mm .079
3.	PXS24114	S24114	KP2075-1	Crown cup
4.	PXS24162	S24162	KP2077-1	Shield cup

PROFAX is in no way affiliated with LINCOLN ELECTRIC. The parts advertised for sale are not genuine LINCOLN ELECTRIC parts, but are parts made for and by PROFAX. References to LINCOLN ELECTRIC machines, torches and numbers are for your convenience only. We reserve the right to substitute genuine LINCOLN ELECTRIC parts in place of PROFAX parts.

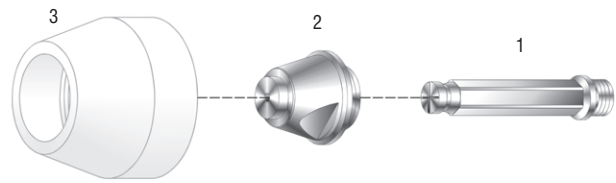


APT 1000 STYLE TORCH HEAD COMPONENTS (SPECTRUM® 187, 187D)



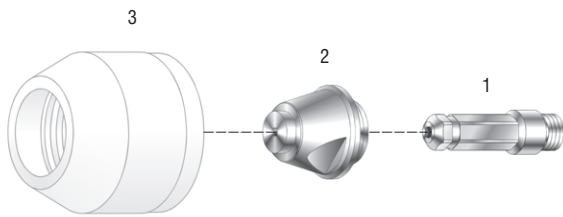
NO.	PROFAX	MILLER®	DESCRIPTION
1.	PX125-032	125032	Electrode
2.	PX125-031	125031	Nozzle tip
3.	PX125-033	125033	Shield cup

APT 3000 STYLE TORCH HEAD COMPONENTS (SPECTRUM® 250D)



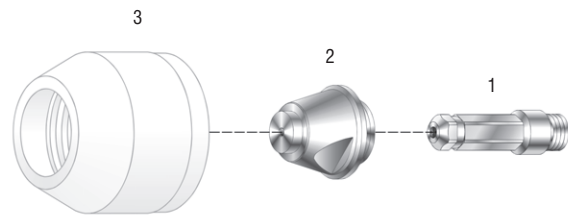
NO.	PROFAX	MILLER®	DESCRIPTION
1.	PX125-069	125069	Electrode
2.	PX125-070	125070	Nozzle tip
3.	PX125-071	125071	Shield cup

APT 5000 STYLE TORCH HEAD COMPONENTS (SPECTRUM® 500)



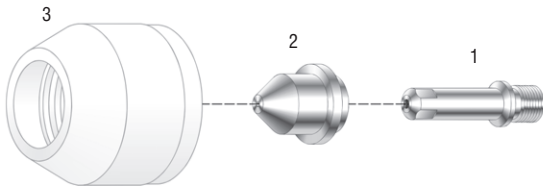
NO.	PROFAX	MILLER®	DESCRIPTION
1.	PX123-899	123899	Electrode
2.	PX123-898	123898	Tip "S"
3.	PX123-897	123897	Shield cup

APT 7000 STYLE TORCH HEAD COMPONENTS (SPECTRUM® 750)



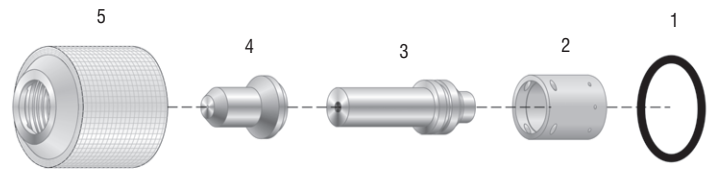
NO.	PROFAX	MILLER®	DESCRIPTION
1.	PX123-899	123899	Electrode
2.	PX123-898	123898	Tip "S"
	PX134-338	134338	Tip "H"
3.	PX134-339	134339	Cup

APT 8000 & APT 8000M STYLE TORCH HEAD COMPONENTS (SPECTRUM® 1500, 1500D)



NO.	PROFAX	MILLER®	DESCRIPTION
1.	PX125-039	125039	Electrode
2.	PX125-038	125038	Tip
3.	PX125-040	125040	Shield cup

ICE-25C TORCH HEAD COMPONENTS (SPECTRUM® 300)

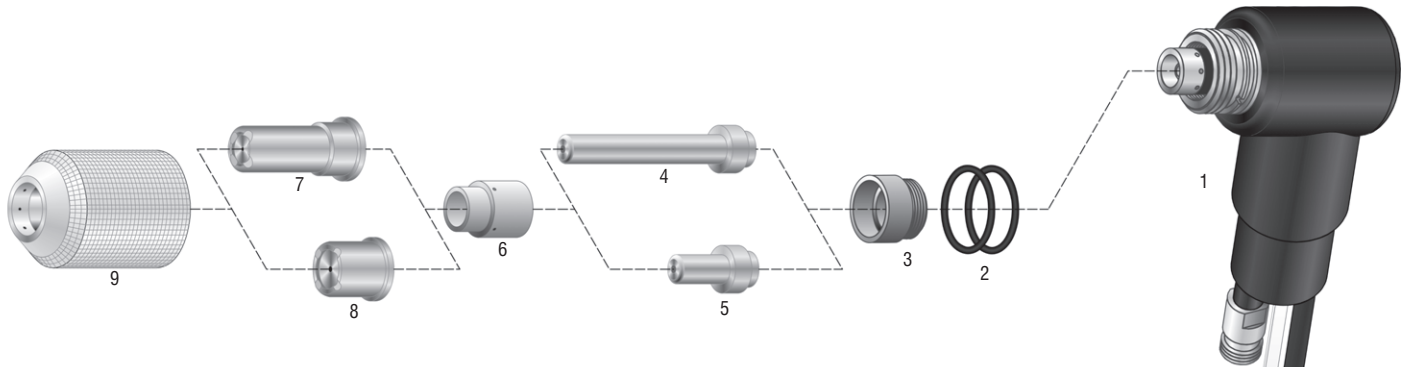


NO.	PROFAX	MILLER®	DESCRIPTION
1.	PX169-232	169232	O-ring
2.	PX176-657	176657	Swirl ring, 25 amp
3.	PX176-655	176655	Electrode, 25 amp
4.	PX176-656	176656	Tip, 25 amp
5.	PX176-658	176658	Shield cup, 25 amp

PROFAX is in no way affiliated with LINCOLN ELECTRIC and MILLER ELECTRIC MFG. CO. The parts advertised for sale are not genuine LINCOLN ELECTRIC and MILLER ELECTRIC MFG. CO. parts, but are parts made for and by PROFAX. References to LINCOLN ELECTRIC and MILLER ELECTRIC MFG. CO. machines, torches and numbers are for your convenience only. We reserve the right to substitute genuine LINCOLN ELECTRIC and MILLER ELECTRIC MFG. CO. parts in place of PROFAX parts.

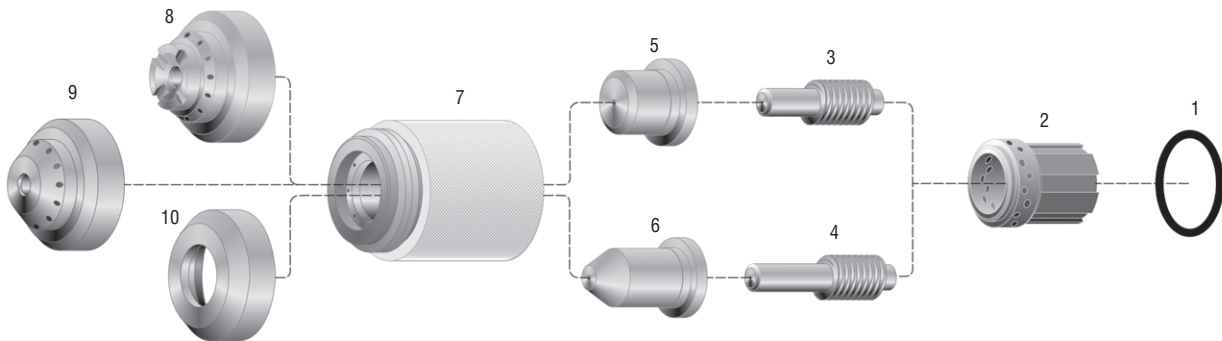


ICE-50 TORCH HEAD COMPONENTS (SPECTRUM® 700)



NO.	PROFAX	MILLER®	DESCRIPTION	NO.	PROFAX	MILLER®	DESCRIPTION
1.	PX171258	171258	Hand torch	7.	PX169214	169214	Tip extended
2.	PX169232	169232	O-ring	8.	PX174034	174034	Tip standard
3.	PX020114-1	020114-1	Torch insulator	9.	PX169216	169216	Cup
4.	PX173895	173895	Electrode extended	*	PX169213	169213	Gouging tip
5.	PX169212	169212	Electrode standard	*	PX132657	132657	Standoff guide
6.	PX169215	169215	Swirl ring				

ICE-50C/50CM TORCH HEAD COMPONENTS (SPECTRUM® 650, 701, 2050)



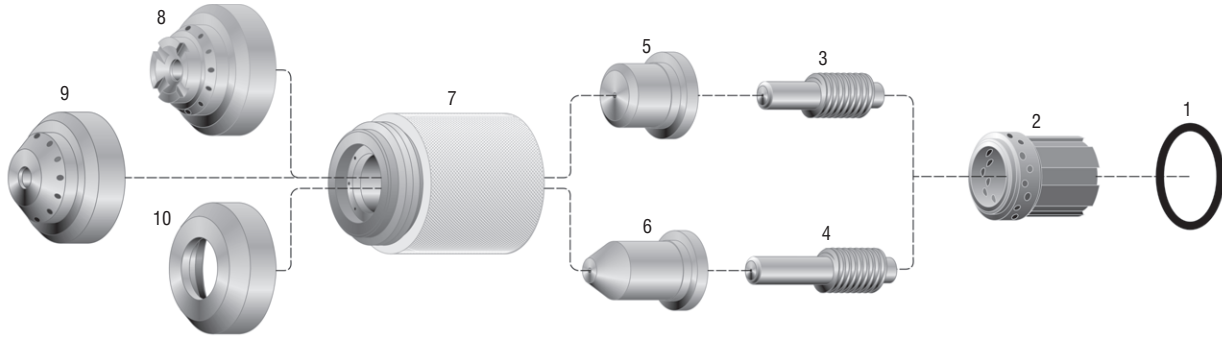
NO.	PROFAX	MILLER®	DESCRIPTION	NO.	PROFAX	MILLER®	DESCRIPTION
1.	PX169232	169232	O-ring	6.	PX177876	177876	Nozzle pipe saddle, extended
2.	PX177886	177886	Swirl ring	7.	PX192050	192050	Retaining cup
3.	PX192047	192047	Electrode air	8.	PX192053	192053	Shield-drag
4.	PX192048	192048	Electrode extended	9.	PX192058	192058	Shield-machine
5.	PX177890	177890	Nozzle standard	10.	PX177888	177888	Deflector

PROFAX is in no way affiliated with MILLER ELECTRIC MFG. CO. The parts advertised for sale are not genuine MILLER ELECTRIC MFG. CO. parts, but are parts made for and by PROFAX. References to MILLER ELECTRIC MFG. CO. machines, torches and numbers are for your convenience only. We reserve the right to substitute genuine MILLER ELECTRIC MFG. CO. parts in place of PROFAX parts.

* - Not Shown

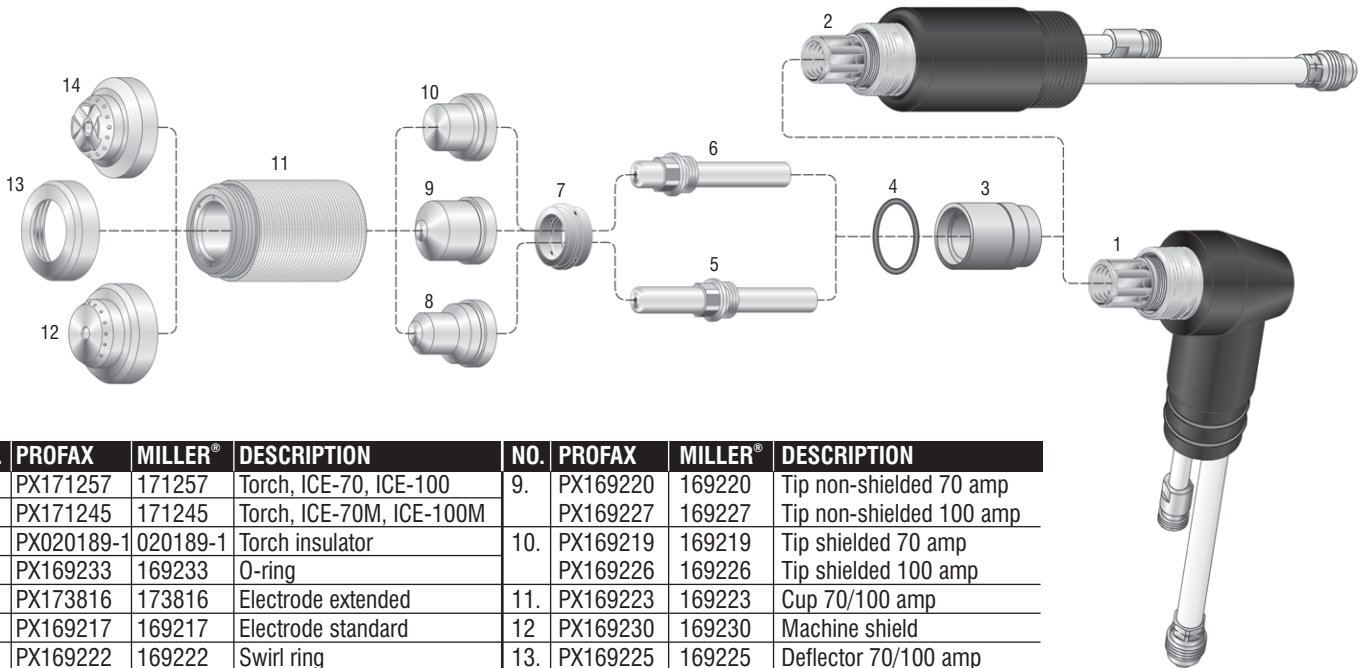


ICE-55C/55CM TORCH HEAD COMPONENTS (SPECTRUM® 2255)



NO.	PROFAX	MILLER®	DESCRIPTION	NO.	PROFAX	MILLER®	DESCRIPTION
1.	PX169232	169232	O-ring		PX192052	192052	Nozzle, 35 amp
2.	PX192049	192049	Swirl ring	7.	PX192050	192050	Retaining cup
3.	PX192047	192047	Electrode air	8.	PX192053	192053	Shield-drag
4.	PX192048	192048	Electrode extended	9.	PX192058	192058	Shield-machine
5.	PX192051	192051	Nozzle standard	10.	PX177888	177888	Deflector
6.	PX192056	192056	Nozzle pipe saddle, extended, 55 amp				

ICE-70/100 AND ICE-70M/100M STYLE TORCH HEAD COMPONENTS (SPECTRUM® 1000 AND 1250)

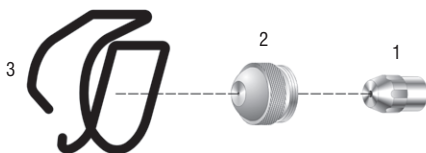


NO.	PROFAX	MILLER®	DESCRIPTION	NO.	PROFAX	MILLER®	DESCRIPTION
1.	PX171257	171257	Torch, ICE-70, ICE-100	9.	PX169220	169220	Tip non-shielded 70 amp
2.	PX171245	171245	Torch, ICE-70M, ICE-100M		PX169227	169227	Tip non-shielded 100 amp
3.	PX020189-1	020189-1	Torch insulator	10.	PX169219	169219	Tip shielded 70 amp
4.	PX169233	169233	O-ring		PX169226	169226	Tip shielded 100 amp
5.	PX173816	173816	Electrode extended	11.	PX169223	169223	Cup 70/100 amp
6.	PX169217	169217	Electrode standard	12.	PX169230	169230	Machine shield
7.	PX169222	169222	Swirl ring	13.	PX169225	169225	Deflector 70/100 amp
8.	PX173815	173815	Tip extended, 70 amp	14.	PX169224	169224	Drag shield

Replacement Parts Suitable For:

Miller Plazcut®

TORCH HEAD COMPONENTS

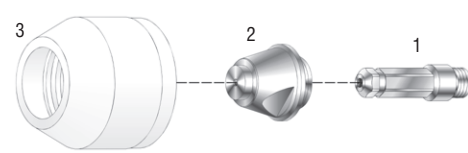


NO.	PROFAX	PLAZCUT®	DESCRIPTION
1.	PX095482	095482	Electrode
2.	PX095483	095483	Tip
3.	PX095485	095485	Guide wire

Replacement Parts Suitable For:

Multiquip®

PCX 50SS STYLE TORCH HEAD COMPONENTS

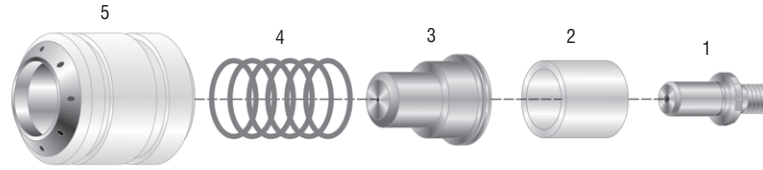


NO.	PROFAX	MULTIQUIP®	DESCRIPTION
1.	PX24072	24072	Electrode
2.	PX24084	24084	Tip "S"
3.	PX24074	24074	Shield cup

PROFAX is in no way affiliated with MILLER ELECTRIC MFG. CO., PLAZCUT and MULTIQUIP. The parts advertised for sale are not genuine MILLER ELECTRIC MFG. CO., PLAZCUT and MULTIQUIP parts, but are parts made for and by PROFAX. References to MILLER ELECTRIC MFG. CO., PLAZCUT and MULTIQUIP machines, torches and numbers are for your convenience only. We reserve the right to substitute genuine MILLER ELECTRIC MFG. CO., PLAZCUT and MULTIQUIP parts in place of PROFAX parts.

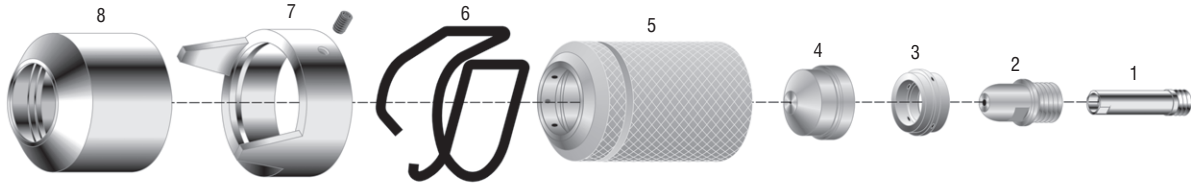


NPT-3, 3R & 3S STYLE TORCH HEAD COMPONENTS



NO.	PROFAX	NUTECSYS®	DESCRIPTION	NO.	PROFAX	NUTECSYS®	DESCRIPTION
1.	PX742.0016	742.0016	Electrode hafnium	4.	PX742.0084	742.0084	Spring
2.	PX742.0082	742.0082	Insulator sleeve	5.	PX742.0086	742.0086	Diffuser, insulator, retaining cap
3.	PX742.0083	742.0083	Tip 1.1mm				

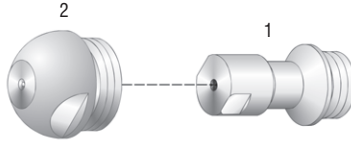
NPT-12 STYLE TORCH HEAD COMPONENTS



NO.	PROFAX	NUTECSYS®	DESCRIPTION	NO.	PROFAX	NUTECSYS®	DESCRIPTION
1.	PX810.0051	810.0051	Diffuser		PX810.0019	810.0019	Nozzle tip 1.9mm
2.	PX810.0013	810.0013	Electrode - Hf.		PX810.0030	810.0030	Gouging nozzle 3.0mm
3.	PX810.0050	810.0050	Swirl ring - VESPEL®	5.	PX810.0052	810.0052	Nozzle retaining cap
4.	PX810.0011	810.0011	Nozzle tip 1.1mm	6.	PX810.0027	810.0027	Spacer spring
	PX810.0014	810.0014	Nozzle tip 1.4mm	7.	PX810.0225	810.0225	Double pointed spacer
	PX810.0017	810.0017	Nozzle tip 1.7mm	8.	PX810.0152	810.0152	Gouging spacer



SMITH-MERKLE® STYLE TORCH HEAD COMPONENTS

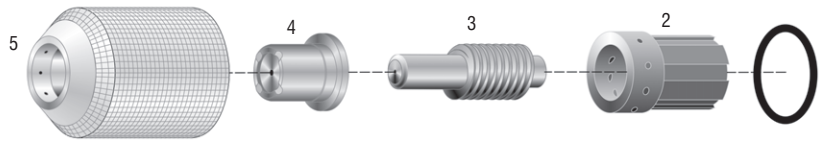


NO.	PROFAX	SMITH-MERKLE®	DESCRIPTION	NO.	PROFAX	SMITH-MERKLE®	DESCRIPTION
1.	PX30808-5	30808-5	Electrode - Hf.		PX30813-5	30813-5	Tip 1.2mm
2.	PX30344-5	30344-5	Tip 1.8mm		PX30814-5	30814-5	Tip 1.4mm
	PX30812-5	30812-5	Tip 1.0mm		PX30815-5	30815-5	Tip 1.6mm

Replacement Parts Suitable For:

Snap-On®

SNAP-ON® STYLE TORCH HEAD COMPONENTS FOR YA5550

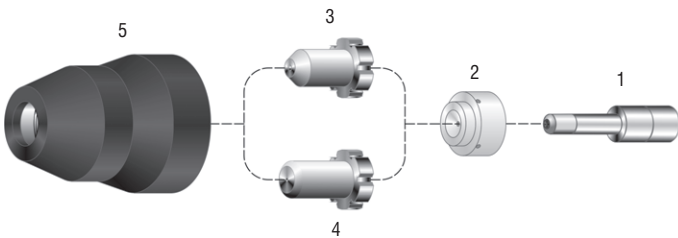


NO.	PROFAX	SNAP-ON®	DESCRIPTION	NO.	PROFAX	SNAP-ON®	DESCRIPTION
1.	PX044-016-100	044-016-100	O-ring	4.	PX334-295-100	334-295-100	Nozzle, LC
2.	PX334-288-100	334-288-100	Swirl ring		PX334-289-100	334-289-100	Nozzle, HC
3.	PX334-287-100	334-287-100	Electrode	5.	PX334-290-110	334-290-110	Retaining cap

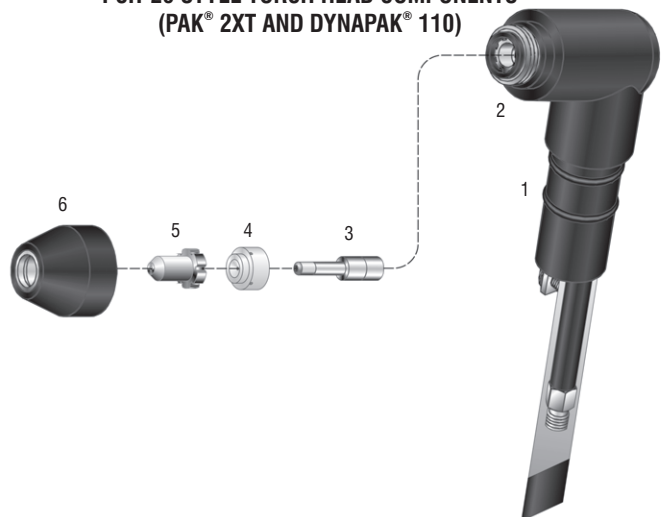
Replacement Parts Suitable For:

Thermal Dynamics Corp.®

**PCH-10 STYLE TORCH HEAD COMPONENTS
(DRAG GUN AND COUGAR)**



**PCH-20 STYLE TORCH HEAD COMPONENTS
(PAK® 2XT AND DYNAPAK® 110)**

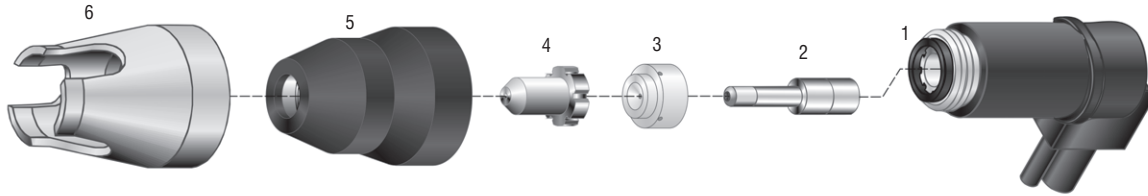


NO.	PROFAX	THERMAL DYNAMICS®	DESCRIPTION	NO.	PROFAX	THERMAL DYNAMICS®	DESCRIPTION
1.	PX9-6006	9-6006	Electrode	1.	PX8-0531	8-0531	O-rings
2.	PX9-6007	9-6007	Gas distributor	2.	PX8-3220	8-3220	Torch body 70°
3.	PX9-6099	9-6099	Tip, air, Drag-Gun™	3.	PX9-6006	9-6006	Electrode
4.	PX9-4476	9-4476	Tip, air, Cougar™ 125	4.	PX8-3233	8-3233	Gas distributor
5.	PX9-6003	9-6003	Shield cup	5.	PX8-3218	8-3218	Tip
				6.	PX8-3214	8-3214	Shield cup
					PX8-3228	8-3228	Shield cup

PROFAX is in no way affiliated with SAF, SMITH MERKLE, SNAP-ON and THERMAL DYNAMICS. The parts advertised for sale are not genuine SAF, SMITH MERKLE, SNAP-ON and THERMAL DYNAMICS parts, but are parts made for and by PROFAX. References to SAF, SMITH MERKLE, SNAP-ON and THERMAL DYNAMICS machines, torches and numbers are for your convenience only. We reserve the right to substitute genuine SAF, SMITH MERKLE, SNAP-ON and THERMAL DYNAMICS parts in place of PROFAX parts.

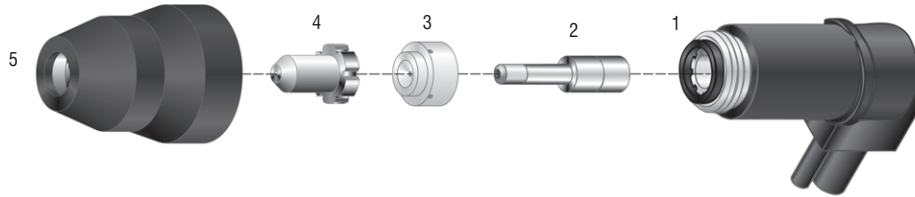


PCH-25 STYLE TORCH HEAD COMPONENTS (PAKMASTER® 25/ECONO-PAK™ 25)



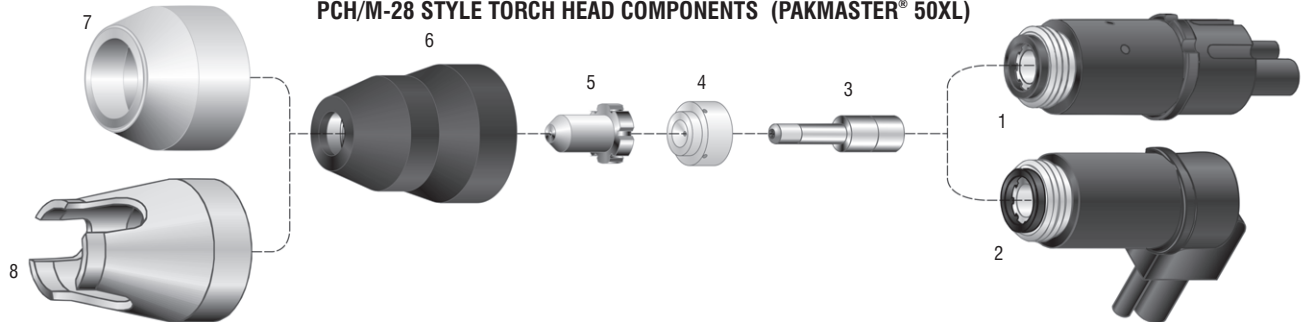
NO.	PROFAX	THERMAL DYNAMICS®	DESCRIPTION	NO.	PROFAX	THERMAL DYNAMICS®	DESCRIPTION
1	PX9-5807	9-5807	Hand torch 70°	4.	PX9-4476	9-4476	Tip
	PX9-5808	9-5808	Hand torch 90°	5.	PX9-6003	9-6003	Shield cup
2.	PX9-6006	9-6006	Electrode	6.	PX9-6004	9-6004	Shield cup, crown w/9-6003
3.	PX9-6007	9-6007	Gas distributor				

PCH-26 STYLE TORCH HEAD COMPONENTS (ECONO-PAK™ 50)



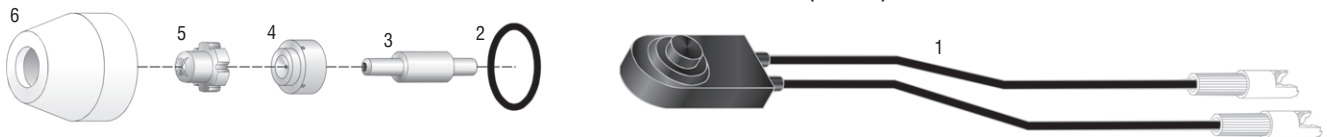
NO.	PROFAX	THERMAL DYNAMICS®	DESCRIPTION	NO.	PROFAX	THERMAL DYNAMICS®	DESCRIPTION
1.	PX9-5807	9-5807	Hand torch 70°	3.	PX9-6507	9-6507	Gas distributor
	PX9-5808	9-5808	Hand torch 90°	4.	PX9-6501	9-6501	Tip drag
2.	PX9-6506	9-6506	Electrode	5.	PX9-6003	9-6003	Shield cup

PCH/M-28 STYLE TORCH HEAD COMPONENTS (PAKMASTER® 50XL)



NO.	PROFAX	THERMAL DYNAMICS®	DESCRIPTION	NO.	PROFAX	THERMAL DYNAMICS®	DESCRIPTION
1.	PX9-5809	9-5809	Machine torch	5.	PX9-6500	9-6500	Tip, stand off
2.	PX9-5807	9-5807	Hand torch 70°		PX9-6501	9-6501	Tip, drag
	PX9-5808	9-5808	Hand torch 90°	6.	PX9-6003	9-6003	Shield cup
3.	PX9-6506	9-6506	Electrode, long life	7.	PX9-6503	9-6503	Shield cup, long life w/9-6003
4.	PX9-6507	9-6507	Gas distributor, long life	8.	PX9-6004	9-6004	Shield cup, crown w/9-6003

PCH/M30 STYLE TORCH HEAD COMPONENTS (PAK® 3)

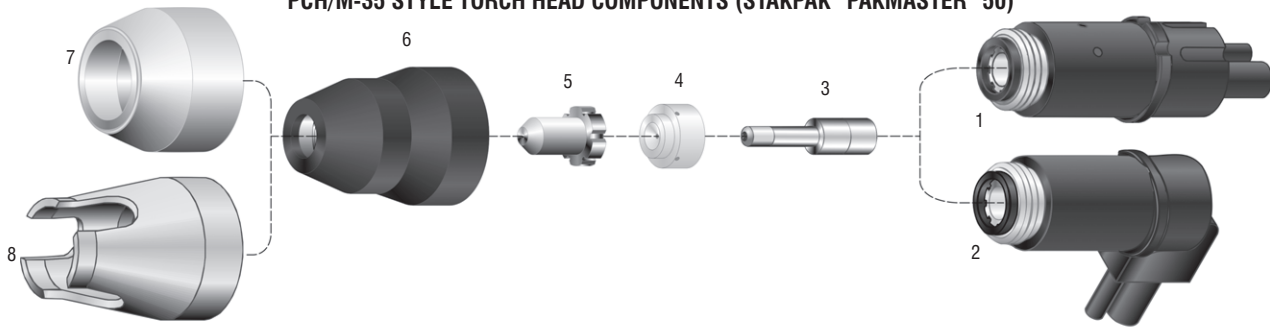


NO.	PROFAX	THERMAL DYNAMICS®	DESCRIPTION	NO.	PROFAX	THERMAL DYNAMICS®	DESCRIPTION
1.	PX9-5522	9-5522	Switch		PX9-6120	9-6120	Tip, H.D.
2.	PX8-0530	8-0530	O-ring	6.	PX9-5500	9-5500	Shield cup
3.	PX9-5503	9-5503	Electrode	*	PX8-7035	8-7035	O-ring
	PX9-5582	9-5582	Electrode, long	*	PX9-5504	9-5504	Continuity pin
4.	PX8-3233	8-3233	Gas distributor	*	PX9-5505	9-5505	Spring
5.	PX9-5501	9-5501	Tip .040	*	PX9-5509	9-5509	Machine torch
	PX9-5581	9-5581	Tip, long	*	PX9-5512	9-5512	Hand torch

PROFAX is in no way affiliated with THERMAL DYNAMICS CORP. The parts advertised for sale are not genuine THERMAL DYNAMICS CORP parts, but are parts made for and by PROFAX. References to THERMAL DYNAMICS CORP machines, torches and numbers are for your convenience only. We reserve the right to substitute genuine THERMAL DYNAMICS CORP parts in place of PROFAX parts.

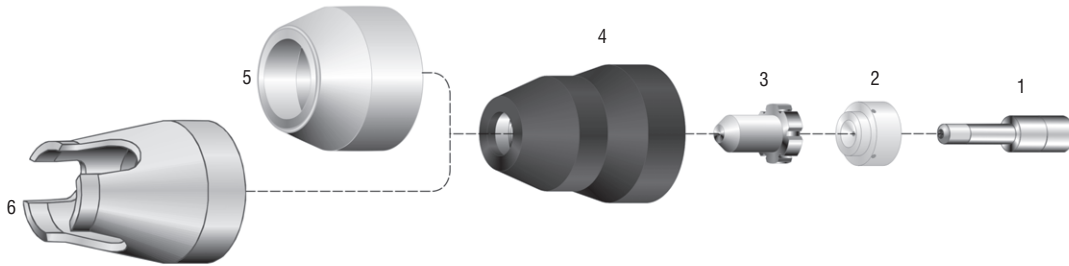


PCH/M-35 STYLE TORCH HEAD COMPONENTS (STAKPAK® PAKMASTER® 50)



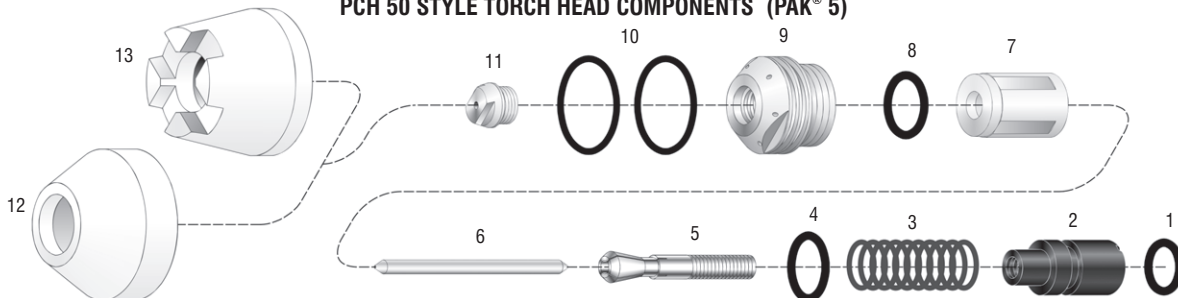
NO.	PROFAX	THERMAL DYNAMICS®	DESCRIPTION	NO.	PROFAX	THERMAL DYNAMICS®	DESCRIPTION
1.	PX9-5809	9-5809	Machine torch		PX9-6002	9-6002	Tip, gouging
2.	PX9-5807	9-5807	Hand torch 70°		PX9-6500	9-6500	Tip, stand off, long life
	PX9-5808	9-5808	Hand torch 90°		PX9-6501	9-6501	Tip, drag, long life
3.	PX9-6006	9-6006	Electrode		PX9-6502	9-6502	Tip, gouging, long life
	PX9-6506	9-6506	Electrode, long life	6.	PX9-6003	9-6003	Shield cup
4.	PX9-6007	9-6007	Gas distributor	7.	PX9-6503	9-6503	Shield cup, long life w/9-6003
	PX9-6507	9-6507	Gas distributor, long life	8.	PX9-6004	9-6004	Shield cup, crown, long life w/9-6003
5.	PX9-6000	9-6000	Tip				
	PX9-6001	9-6001	Tip, drag				

PCH/M-40 STYLE TORCH HEAD COMPONENTS (PAKMASTER® 50XL PLUS)



NO.	PROFAX	THERMAL DYNAMICS®	DESCRIPTION	NO.	PROFAX	THERMAL DYNAMICS®	DESCRIPTION
1.	PX9-6506	9-6506	Electrode, long life	4.	PX9-6003	9-6003	Shield cup
2.	PX9-6507	9-6507	Gas distributor, long life	5.	PX9-6503	9-6503	Shield cup, long life w/9-6003
3.	PX9-6500	9-6500	Tip, stand off, long life	6.	PX9-6004	9-6004	Shield cup, crown, long life w/9-6003
	PX9-6501	9-6501	Tip, drag, long life				
	PX9-6502	9-6502	Tip, gouging, long life				

PCH 50 STYLE TORCH HEAD COMPONENTS (PAK® 5)



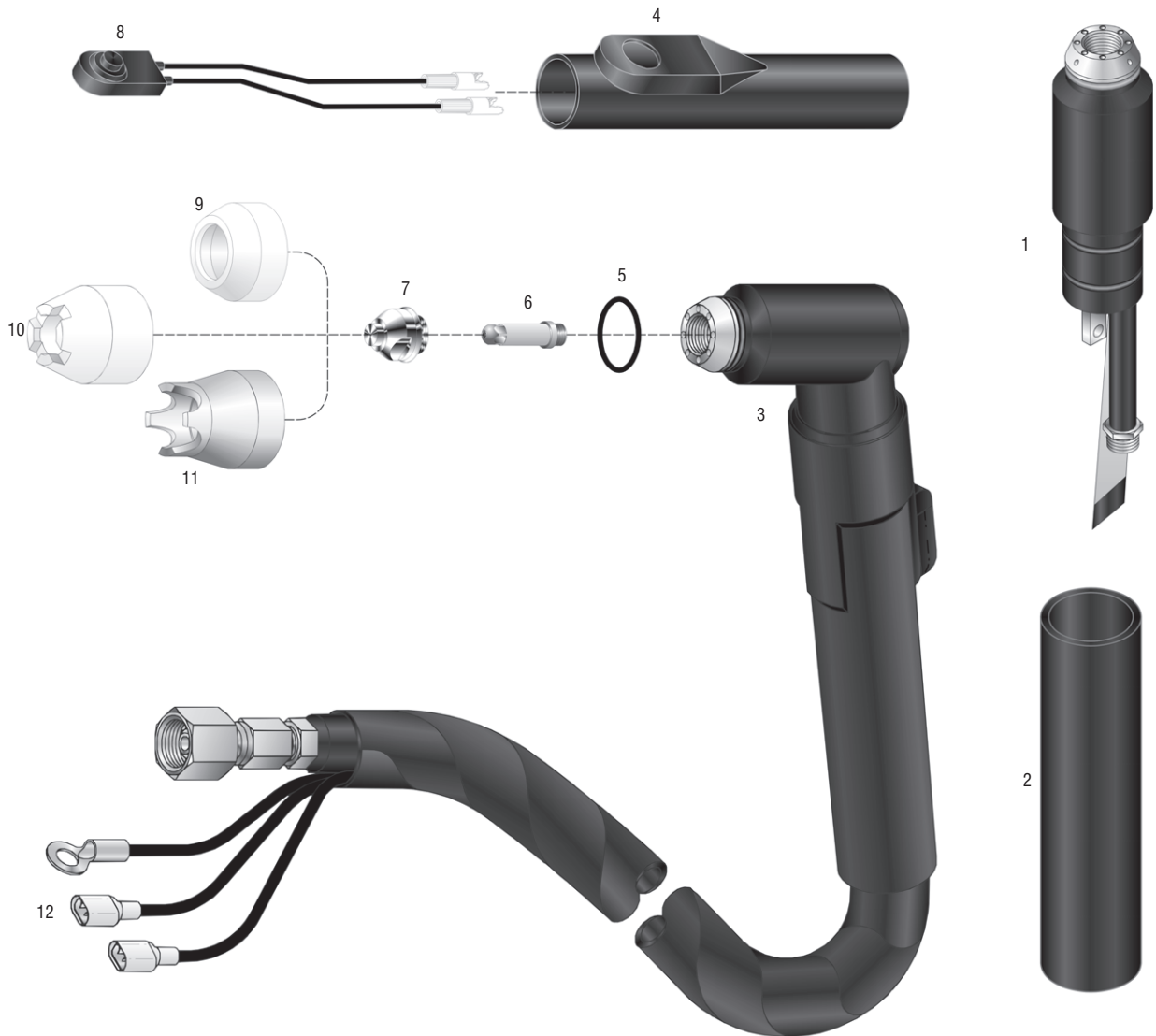
NO.	PROFAX	THERMAL DYNAMICS®	DESCRIPTION	NO.	PROFAX	THERMAL DYNAMICS®	DESCRIPTION
1.	PX8-5514	8-5514	O-ring		PX8-3321	8-3321	Tip 1.2, .047
2.	PX8-5502	8-5502	Collet release button w/8-5514 O-ring	12.	PX8-5505	8-5505	Shield cup
3.	PX8-5503	8-5503	Spring	13.	PX8-5519	8-5519	Crown shield cup
4.	PX8-5504	8-5504	O-ring	*	PX8-1780	8-1780	Switch
5.	PX8-5506	8-5506	Collet	*	PX8-1322	8-1322	Switch retaining sheath
6.	PX8-5508	8-5508	Electrode	*	PX8-0533	8-0533	O-ring (handle)
7.	PX8-5510	8-5510	Sleeve	*	PX8-4007	8-4007	Liner wrench
8.	PX8-5515	8-5515	O-ring	*	PX8-4025	8-4025	Lubricant
9.	PX8-5520	8-5520	Liner w/8-5515 & 8-5521	*	PX8-5501	8-5501	Torch body 70°
10.	PX8-5521	8-5521	O-ring	*	PX8-5512	8-5512	Tip wrench
11.	PX8-5507	8-5507	Tip .046	*	PX8-5513	8-5513	O-ring tool

PROFAX is in no way affiliated with THERMAL DYNAMICS CORP. The parts advertised for sale are not genuine THERMAL DYNAMICS CORP. parts, but are parts made for and by PROFAX. References to THERMAL DYNAMICS CORP. machines, torches and numbers are for your convenience only. We reserve the right to substitute genuine THERMAL DYNAMICS CORP. parts in place of PROFAX parts.

* - Not Shown



PCH/M-51 STYLE TORCH HEAD COMPONENTS
(4XI, 6XI, PAK® 3XR, PAK® 5XR, PAK® 6XR, PAK® 7XR, PAK® 5XT, PAK® 625XR AND PAK® 750XR)



NO.	PROFAX	THERMAL DYNAMICS®	DESCRIPTION	NO.	PROFAX	THERMAL DYNAMICS®	DESCRIPTION
	PX2-2985	2-2985	PCH-51 70° torch w/25' leads	8.	PX8-1164	8-1164	Switch
	PX2-2986	2-2986	PCH-51 70° torch w/50' leads	9.	PX9-5630	9-5630	Shield cup-ceramic
	PX2-2991	2-2991	PCM-51 M. torch w/25' leads		PX8-2152	8-2152	Shield cup Vespel®
	PX2-2992	2-2992	PCM-51 M. torch w/50' leads		PX8-2151	8-2151	Shield cup long Vespel®
1.	PX9-5634	9-5634	PCM-51 machine torch body		PX8-2159	8-2159	Shield cup phenolic
2.	PX9-5636	9-5636	Handle	10.	PX8-5526	8-5526	Crown cup
3.	PX9-5635	9-5635	PCH-51 70° torch body	11.	PX9-5779	9-5779	Shield cup metal fits over 8-2159
4.	PX8-1322	8-1322	Switch retaining sheath	12.	PX4-5030	4-5030	PCH-51 leads 25'
5.	PX8-5525	8-5525	O-ring		PX4-5031	4-5031	PCH-51 leads 50'
6.	PX9-5633	9-5633	Electrode		PX4-5032	4-5032	PCM-51 leads 25'
	PX9-5720	9-5720	Electrode (4XI)		PX4-5033	4-5033	PCM-51 leads 50'
7.	PX8-3321	8-3321	Tip 1.2 - .047	*	PX8-4053	8-4053	Tip wrench
	PX9-5631	9-5631	Tip 1.1 - .043	*	PX8-4220	8-4220	Electrode wrench
	PX9-5718	9-5718	Tip 1.0 - .038	*	PX8-4025	8-4025	Lubricant
	PX9-5724	9-5724	Tip 2.0 - .079 gouging				

PROFAX is in no way affiliated with THERMAL DYNAMICS CORP. The parts advertised for sale are not genuine THERMAL DYNAMICS CORP. parts, but are parts made for and by PROFAX. References to THERMAL DYNAMICS CORP. machines, torches and numbers are for your convenience only. We reserve the right to substitute genuine THERMAL DYNAMICS CORP. parts in place of PROFAX parts.

* - Not Shown

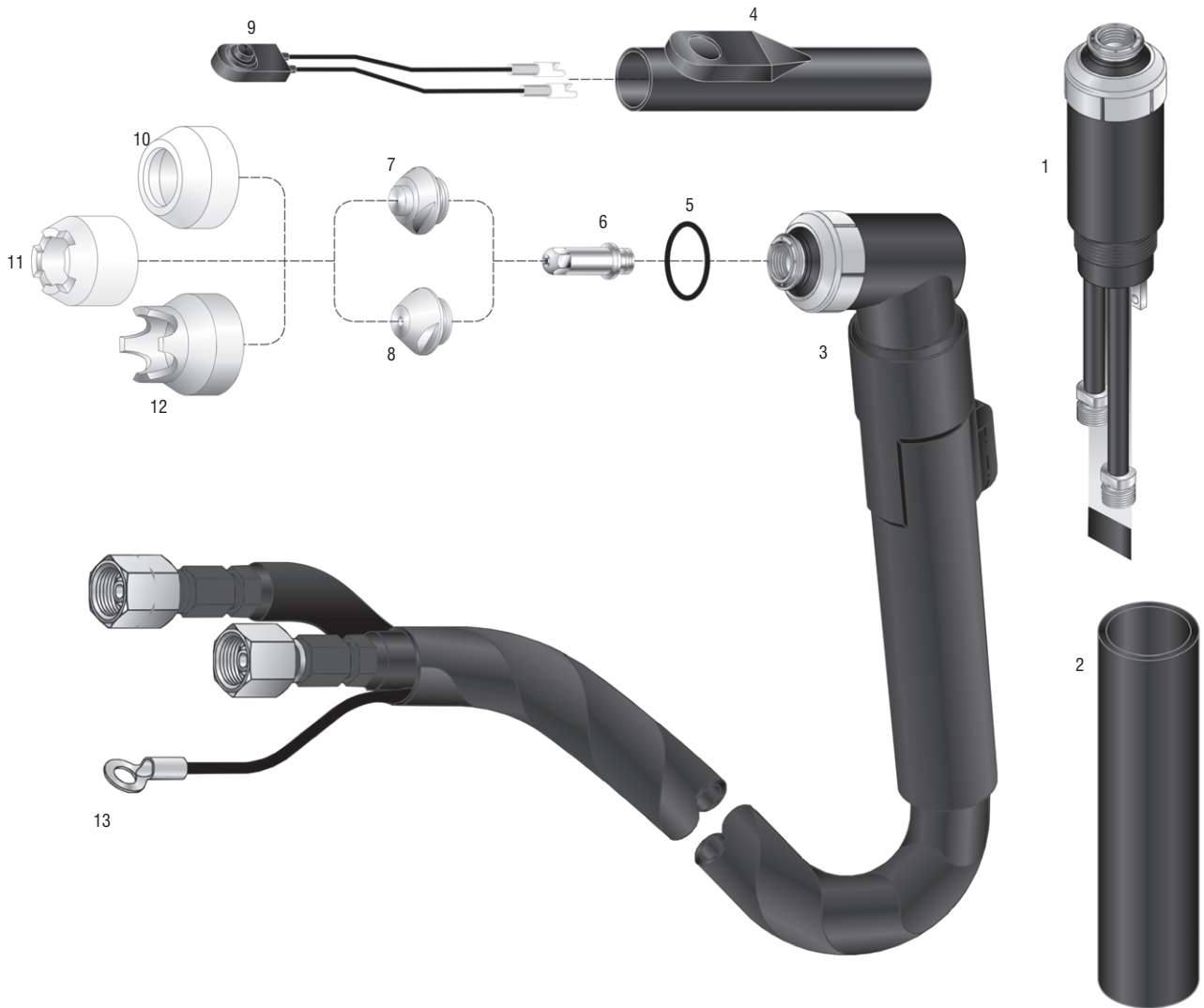


Replacement Parts Suitable For:

Thermal Dynamics Corp.®

PROFAX SECTION 400

PCH/M-52 STYLE TORCH HEAD COMPONENTS (PAK® 5XR DUAL GAS, PAK® 6XR DUAL GAS, PAK® 7XR, PAK® 8XR, PAK® 10XR, PAK® 625XR DUAL GAS, PAK® 750XR, PAK® 1000XR, AND PAK® 1250XR)



NO.	PROFAX	THERMAL DYNAMICS®	DESCRIPTION	NO.	PROFAX	THERMAL DYNAMICS®	DESCRIPTION
	PX2-2936	2-2936	PCH-52 70° torch w/25' leads		PX9-5710	9-5710	Gouging tip 2.4-.093, 105 amp
	PX2-2937	2-2937	PCH-52 70° torch w/50' leads		PX9-5713	9-5713	Gouging tip 2.75-.113, 105 amp
	PX2-2938	2-2938	PCM-52 machine torch w/25' leads		PX8-5129	8-5129	Gouging tip .093, 80 amp
	PX2-2939	2-2939	PCM-52 machine torch w/50' leads	9.	PX9-5522	9-5522	Switch
1.	PX9-5643	9-5643	PCM-52 machine torch body	10.	PX9-5617	9-5617	Shield cup-ceramic
2.	PX9-5644	9-5644	Handle		PX9-5781	9-5781	Shield cup phenolic
3.	PX9-5642	9-5642	PCH-52 70° torch body		PX9-5712	9-5712	Shield cup drag
4.	PX8-4216	8-4216	Switch retaining sheath		PX8-5128	8-5128	Shield cup gouging
5.	PX8-5525	8-5525	O-ring	11.	PX9-5694	9-5694	Crown shield cup
6.	PX9-5619	9-5619	Electrode - Hf.	12.	PX9-5780	9-5780	Shield cup metal fits over 9-5781
	PX9-5711	9-5711	Electrode dual gas	13.	PX4-5034	4-5034	PCH-52 leads 25'
7.	PX9-5618	9-5618	Tip 1.1-.043		PX4-5035	4-5035	PCH-52 leads 50'
	PX9-5702	9-5702	Tip 0.8-.031, 35 amp, cut		PX4-5036	4-5036	PCM-52 leads 25'
	PX9-5706	9-5706	Tip .042		PX4-5037	4-5037	PCM-52 leads 50'
	PX9-5707	9-5707	Tip 1.2-.047, 70 amp, cut	*	PX8-5130	8-5130	Heat shield
	PX9-5708	9-5708	Tip 1.5-.059, 105 amp	*	PX8-4007	8-4007	Tip wrench
	PX9-5782	9-5782	Tip .052, 80 amp	*	PX9-5620	9-5620	Electrode wrench
8.	PX9-5709	9-5709	Gouging tip 2.0-.078, 70 amp	*	PX8-4025	8-4025	Lubricant

PROFAX is in no way affiliated with THERMAL DYNAMICS CORP. The parts advertised for sale are not genuine THERMAL DYNAMICS CORP. parts, but are parts made for and by PROFAX. References to THERMAL DYNAMICS CORP. machines, torches and numbers are for your convenience only. We reserve the right to substitute genuine THERMAL DYNAMICS CORP. parts in place of PROFAX parts.

* - Not Shown



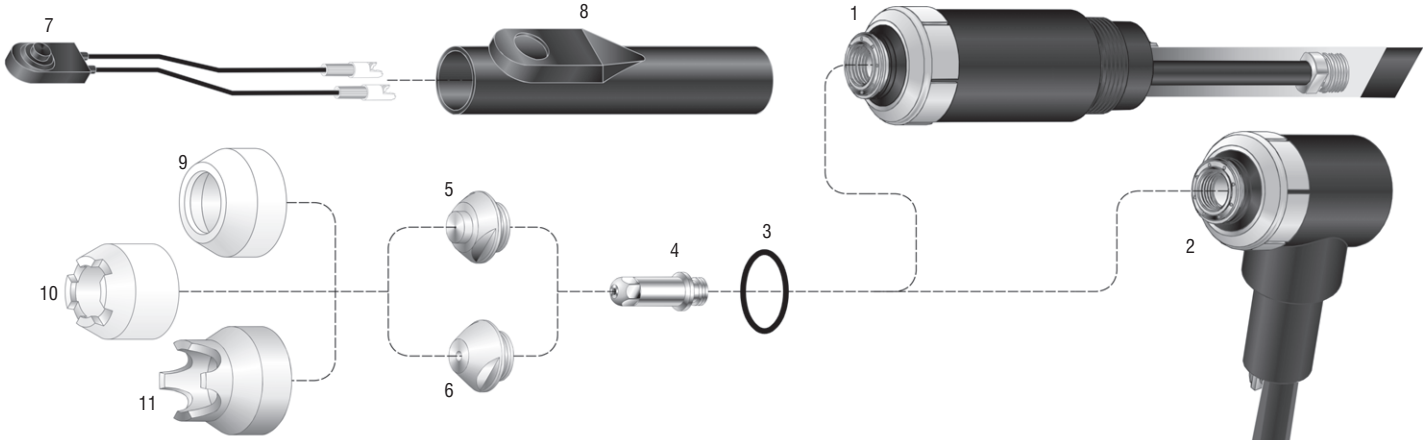
Replacement Parts Suitable For:

Thermal Dynamics Corp.®

PROFAX

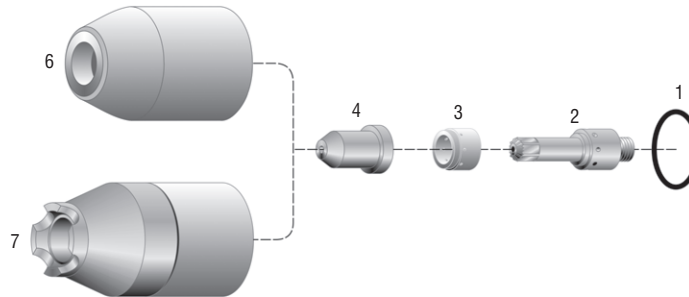
**SECTION
400**

PCH/M-53 STYLE TORCH HEAD COMPONENTS (PAKMASTER® 100)



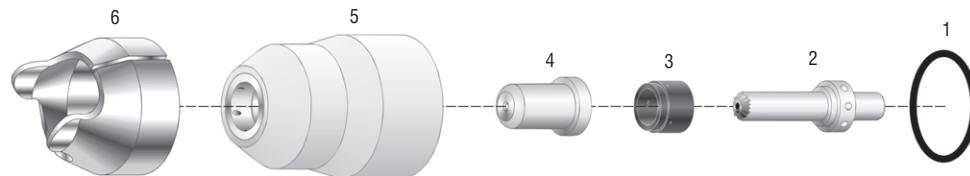
NO.	PROFAX	THERMAL DYNAMICS®	DESCRIPTION	NO.	PROFAX	THERMAL DYNAMICS®	DESCRIPTION
1.	PX9-6180	9-6180	PCM-53 machine torch body	8.	PX8-4216	8-4216	Switch retaining sheath
2.	PX9-6170	9-6170	PCH-53 70° torch body	9.	PX9-5617	9-5617	Shield cup ceramic
3.	PX8-5525	8-5525	O-ring		PX9-5781	9-5781	Shield cup phenolic
4.	PX9-5898	9-5898	Electrode, air		PX9-5712	9-5712	Shield cup drag
5.	PX9-5897	9-5897	Tip, air, 70 amp	10.	PX9-5694	9-5694	Crown shield cup
6.	PX9-5709	9-5709	Tip, gouging .078, 70 amp	11.	PX9-5780	9-5780	Shield cup metal fits over 9-5781
7.	PX9-5522	9-5522	Switch	*	PX8-5130	8-5130	Heat Shield

PCH/M-60 STYLE TORCH HEAD COMPONENTS (PAKMASTER® 75XL PLUS)



NO.	PROFAX	THERMAL DYNAMICS®	DESCRIPTION	NO.	PROFAX	THERMAL DYNAMICS®	DESCRIPTION
1.	PX8-0532	8-0532	O-ring		PX8-7503	8-7503	Tip, cutting, 35 amp, .039
2.	PX8-7502	8-7502	Electrode-Hf.		PX9-7726	9-7726	Tip, cutting, 55 amp, .047
3.	PX8-7501	8-7501	Gas distributor, cutting	6.	PX8-7500	8-7500	Shield cup
	PX8-7508	8-7508	Gas distributor, gouging	7.	PX8-7507	8-7507	Shield cup, crown
4.	PX8-7506	8-7506	Tip, gouging, .073		PX9-7501	8-7507	Spring-shield cup (PROFAX cups only)

PCH/M-62 STYLE TORCH HEAD COMPONENTS (PAKMASTER® 50XL PLUS AND CUT MASTER 50)



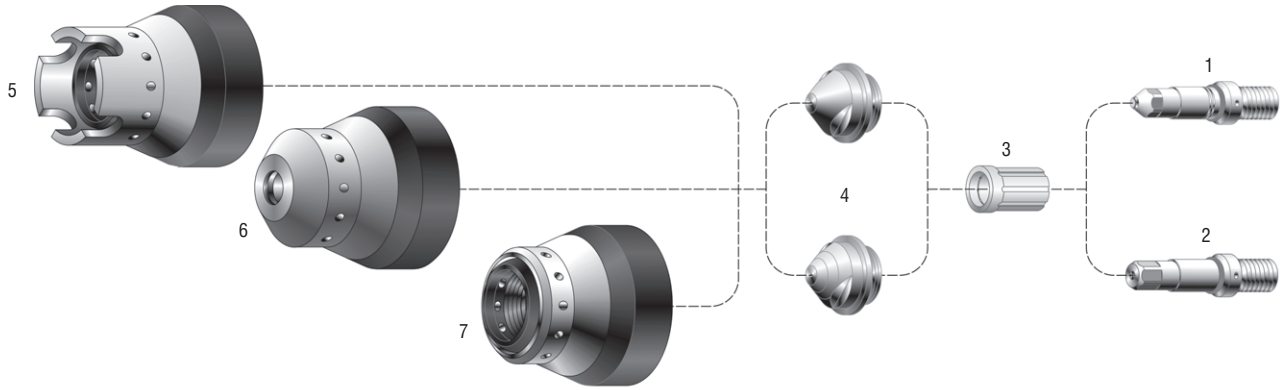
NO.	PROFAX	THERMAL DYNAMICS®	DESCRIPTION	NO.	PROFAX	THERMAL DYNAMICS®	DESCRIPTION
1.	PX8-0532	8-0532	O-ring		PX9-8412	9-8412	Tip, stand off
2.	PX9-8402	9-8402	Electrode		PX9-8416	9-8416	Tip, gouging
	PX9-8407	9-8407	Electrode	5.	PX9-8400	9-8400	Shield cup
3.	PX9-8401	9-8401	Gas distributor	6.	PX9-8415	9-8415	Standoff
4.	PX9-8411	9-8411	Tip, drag				

PROFAX is in no way affiliated with THERMAL DYNAMICS CORP. The parts advertised for sale are not genuine THERMAL DYNAMICS CORP. parts, but are parts made for and by PROFAX. References to THERMAL DYNAMICS CORP. machines, torches and numbers are for your convenience only. We reserve the right to substitute genuine THERMAL DYNAMICS CORP. parts in place of PROFAX parts.

* - Not Shown

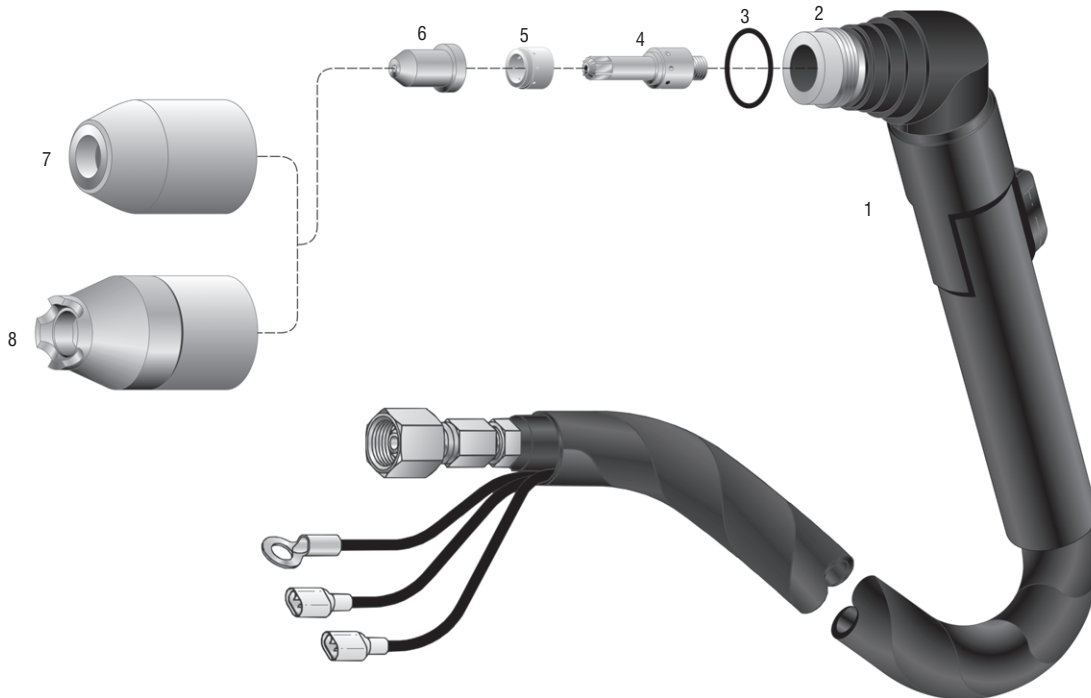


PCH/M-70 STYLE TORCH HEAD COMPONENTS (STAK PAK®)



NO.	PROFAX	THERMAL DYNAMICS®	DESCRIPTION	NO.	PROFAX	THERMAL DYNAMICS®	DESCRIPTION
	PX9-5810	9-5810	Hand torch 70°		PX9-6012	9-6012	Tip, multi gas, 35 amp
	PX9-5812	9-5812	Machine torch		PX9-6013	9-6013	Tip, multi gas, 70 amp
1.	PX9-6021	9-6021	Electrode, multi gas		PX9-6014	9-6014	Tip, gouging .089
2.	PX9-6019	9-6019	Electrode, air		PX9-6015	9-6015	Tip, gouging .104
	PX9-6020	9-6020	Electrode, oxygen		PX9-6109	9-6109	Tip, gouging .125
3.	PX9-6022	9-6022	Gas distributor	5.	PX9-6017	9-6017	Crown shield cup
4.	PX9-6008	9-6008	Tip, air, 35 amp	6.	PX9-6024	9-6024	Long shield cup
	PX9-6009	9-6009	Tip, air, 70 amp	7.	PX9-6016	9-6016	Shield cup
	PX9-6010	9-6010	Tip, oxygen, 35 amp		PX9-6018	9-6018	Shield cup, gouging
	PX9-6011	9-6011	Tip, oxygen, 70 amp				

PCH-75 STYLE TORCH HEAD COMPONENTS (PAKMASTER® 75, PAKMASTER® 75XL, PAKMASTER® 100XL PLUS, ECONO PAK 100)



NO.	PROFAX	THERMAL DYNAMICS®	DESCRIPTION	NO.	PROFAX	THERMAL DYNAMICS®	DESCRIPTION
1.	PX2-7501	2-7501	PCH-75 hand torch complete w/25' cable	6.	PX8-7503	8-7503	Tip cutting 35 amp - .039
	PX2-7502	2-7502	PCH-75 hand torch comp. w/50' cable		PX8-7504	8-7504	Tip cutting 55 amp - .046
2.	PX8-7510	8-7510	Hand torch head 70°		PX8-7505	8-7505	Tip cutting 70 amp - .052
3.	PX8-0532	8-0532	O-ring		PX8-7506	8-7506	Tip gouging - .073
4.	PX8-7502	8-7502	Electrode - Hf.	7.	PX8-7500	8-7500	Shield cup
5.	PX8-7501	8-7501	Gas distributor, cutting	8.	PX8-7507	8-7507	Shield cup, crown
	PX8-7508	8-7508	Gas distributor, gouging		PX9-7501	8-7507	Spring-shield cup (PROFAX cups only)

PROFAX is in no way affiliated with THERMAL DYNAMICS CORP. The parts advertised for sale are not genuine THERMAL DYNAMICS CORP. parts, but are parts made for and by PROFAX. References to THERMAL DYNAMICS CORP. machines, torches and numbers are for your convenience only. We reserve the right to substitute genuine THERMAL DYNAMICS CORP. parts in place of PROFAX parts.



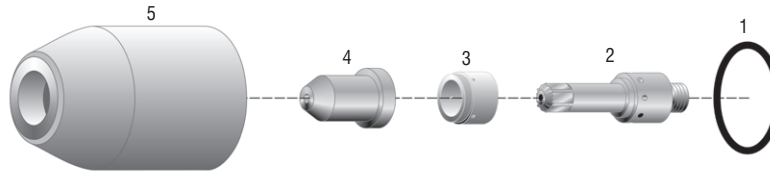
Replacement Parts Suitable For:

Thermal Dynamics Corp.®



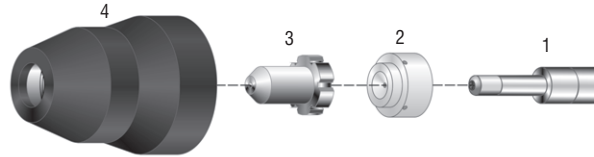
**SECTION
400**

PCH/M-80 STYLE TORCH HEAD COMPONENTS (PAKMASTER® 100XL PLUS)



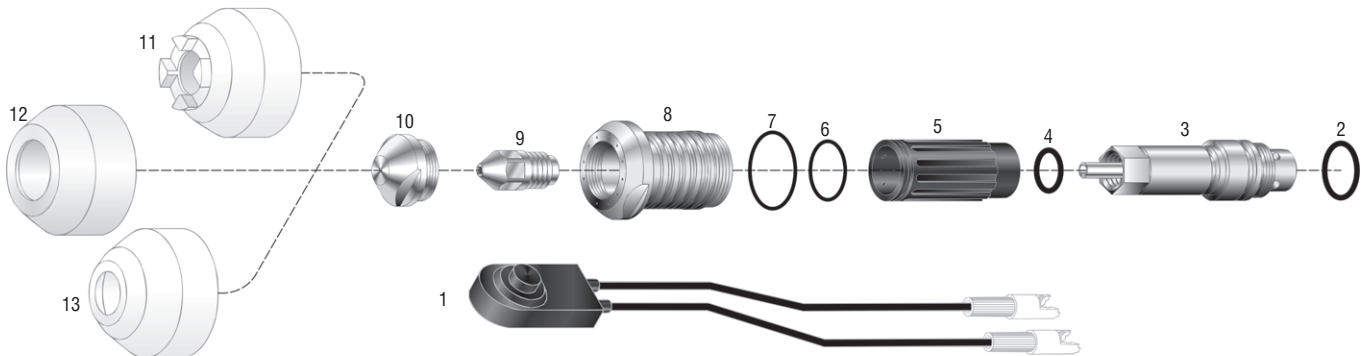
NO.	PROFAX	THERMAL DYNAMICS®	DESCRIPTION	NO.	PROFAX	THERMAL DYNAMICS®	DESCRIPTION
1.	PX8-0532	8-0532	O-ring		PX8-7504	8-7504	Tip, cutting, 55 amp, Air/N ₂
2.	PX8-7502	8-7502	Electrode, Air/N ₂		PX9-7728	9-7728	Tip, cutting, 80 amp, Air/N ₂
3.	PX8-7501	8-7501	Gas distributor, cutting	5.	PX8-7500	8-7500	Shield cup
	PX8-7508	8-7508	Gas distributor, gouging		PX8-7507	8-7507	Shield cup, crown
4.	PX8-7506	8-7506	Tip, gouging		PX9-7501		Spring-shield cup (PROFAX cups only)
	PX8-7503	8-7503	Tip, cutting, 35 amp, drag				

PCM-25/38 STYLE TORCH HEAD COMPONENTS (DRAG GUN 38 AND PAKMASTER® 38XL)



NO.	PROFAX	THERMAL DYNAMICS®	DESCRIPTION	NO.	PROFAX	THERMAL DYNAMICS®	DESCRIPTION
1.	PX9-6506	9-6506	Electrode, long life	3.	PX9-6501	9-6501	Tip, drag, long life
2.	PX9-6507	9-6507	Gas distributor, long life	4.	PX9-6003	9-6003	Shield cup

PCH/M-100 STYLE TORCH HEAD COMPONENTS (PAK® 10XR)



NO.	PROFAX	THERMAL DYNAMICS®	DESCRIPTION	NO.	PROFAX	THERMAL DYNAMICS®	DESCRIPTION
1.	PX9-5522	9-5522	Switch		PX9-4342	9-4342	Tip 1.2 - .047, 70 amp
2.	PX8-1152	8-1152	O-ring		PX9-4341	9-4341	Tip 1.5 - .059, 105 amp
3.	PX8-1108	8-1108	Electrode holder w/8-1133,8-1152	11.	PX8-1101	8-1101	Crown shield cup
4.	PX8-1133	8-1133	O-ring	12.	PX9-4345	9-4345	Shield cup (machine torch)
5.	PX9-4339	9-4339	Gas distributor w/8-1134	13.	PX8-1100	8-1100	Shield cup (hand torch)
6.	PX8-1134	8-1134	O-ring	*	PX8-0556	8-0556	O-ring (cup)
7.	PX8-1135	8-1135	O-ring	*	PX8-0538	8-0538	O-ring (handle)
8.	PX8-1106	8-1106	Liner w/8-1135	*	PX8-1110	8-1110	Electrode wrench
9.	PX9-4340	9-4340	Electrode - Hf.	*	PX8-1111	8-1111	Electrode holder wrench
10.	PX9-4343	9-4343	Tip 1.0 - .039, 35 amp	*	PX8-4025	8-4025	Lubricant

PROFAX is in no way affiliated with THERMAL DYNAMICS CORP. The parts advertised for sale are not genuine THERMAL DYNAMICS CORP parts, but are parts made for and by PROFAX. References to THERMAL DYNAMICS CORP. machines, torches and numbers are for your convenience only. We reserve the right to substitute genuine THERMAL DYNAMICS CORP. parts in place of PROFAX parts.

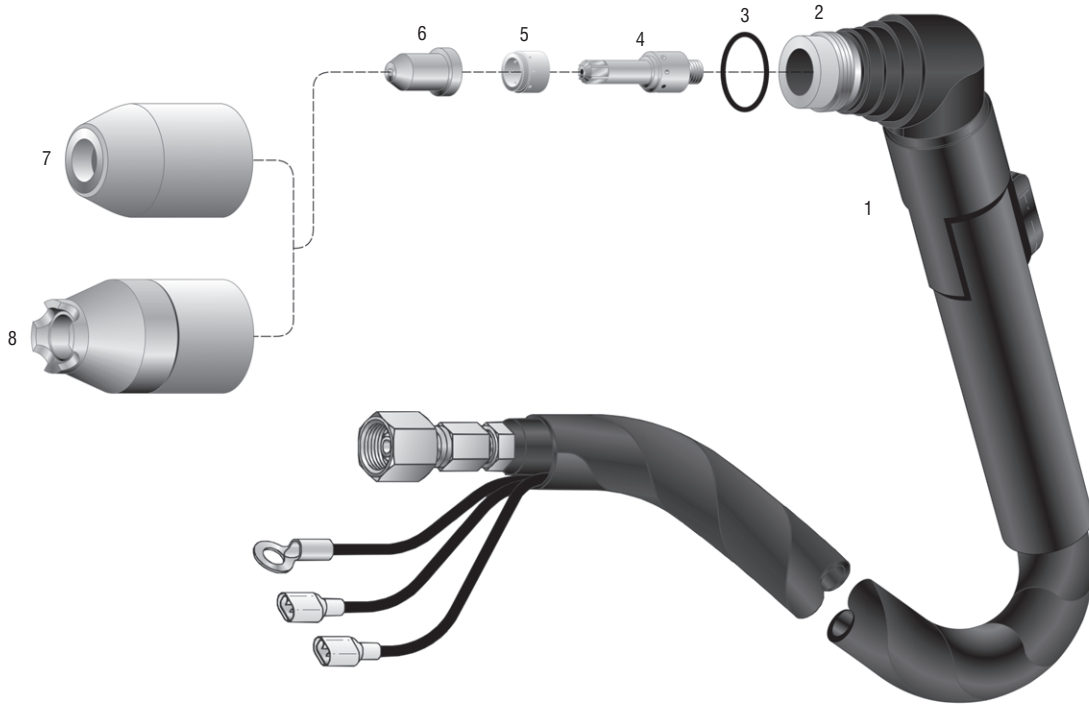


Replacement Parts Suitable For:

Thermal Dynamics Corp.®

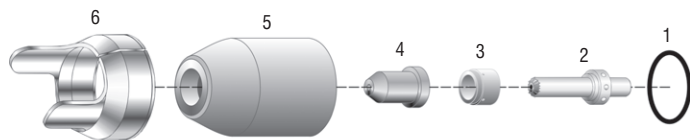
PROFAX SECTION 400

PCH/M-100XL STYLE TORCH HEAD COMPONENTS (PAKMASTER® 100XL)



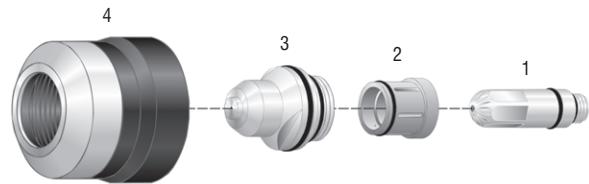
NO.	PROFAX	THERMAL DYNAMICS®	DESCRIPTION	NO.	PROFAX	THERMAL DYNAMICS®	DESCRIPTION
1.	PX2-0001	2-0001	PCH100XL hand torch comp. w/25' cable	6.	PX8-7503	8-7503	Tip cutting 35 amp - .039
	PX2-0002	2-0002	PCH100XL hand torch comp. w/50' cable		PX8-7504	8-7504	Tip cutting 55 amp - .046
2.	PX8-7510	8-7510	Hand torch head 70°		PX8-7505	8-7505	Tip cutting 70 amp - .052
3.	PX8-0532	8-0532	O-ring		PX8-7506	8-7506	Tip gouging - .073
4.	PX8-7502	8-7502	Electrode - Hf.	7.	PX8-7500	8-7500	Shield cup
5.	PX8-7501	8-7501	Gas distributor, cutting	8.	PX8-7507	8-7507	Shield cup, crown
	PX8-7508	8-7508	Gas distributor, gouging		PX9-7501	9-7501	Spring-shield cup (PROFAX cups only)

PCH/M-102 STYLE TORCH HEAD COMPONENTS (75XL PLUS 60 AMP, 100XL PLUS 80 AMP AND CUTMASTER 75)



NO.	PROFAX	THERMAL DYNAMICS®	DESCRIPTION
1.	PX8-0532	8-0532	O-ring
2.	PX9-8402	9-8402	Electrode
	PX9-8407	9-8407	Electrode, extended life
3.	PX8-7501	8-7501	Gas distributor, cutting
	PX8-7508	8-7508	Gas distributor, gouging
4.	PX8-7503	8-7503	Tip, cutting, 40 amp
	PX8-7506	8-7506	Tip, gouging
	PX8-7514	8-7514	Tip, 60 amp
	PX8-7515	8-7515	Tip, 80 amp
	PX9-7726	9-7726	Tip, cutting, 60 amp
	PX9-7728	9-7728	Tip cutting, 80 amp (100XL PLUS only)
	PX9-8406	9-8406	Tip, 100 amp
5.	PX8-7500	8-7500	Shield cup, cutting
	PX8-7507	8-7507	Shield cup, crown
6.	PX8-7575	8-7575	Stand-off cutting guide

PCH-120 STYLE TORCH HEAD COMPONENTS (PAKMASTER 150XL)



NO.	PROFAX	THERMAL DYNAMICS®	DESCRIPTION
1.	PX20-1210	20-1210	Electrode
2.	PX20-1215	20-1215	Gas distributor
3.	PX20-1220	20-1220	Tip, 35 amp
	PX20-1221	20-1221	Tip, 70 amp
	PX20-1222	20-1222	Tip, 120 amp
4.	PX20-1225	20-1225	Shield cup

PROFAX is in no way affiliated with THERMAL DYNAMICS CORP. The parts advertised for sale are not genuine THERMAL DYNAMICS CORP parts, but are parts made for and by PROFAX. References to THERMAL DYNAMICS CORP machines, torches and numbers are for your convenience only. We reserve the right to substitute genuine THERMAL DYNAMICS CORP parts in place of PROFAX parts.



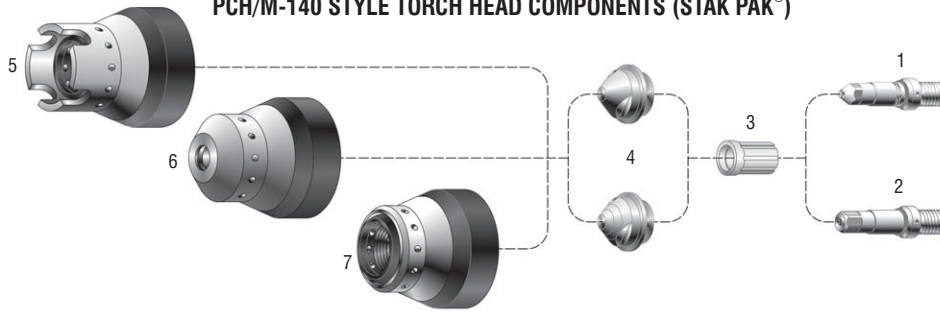
Replacement Parts Suitable For:

Thermal Dynamics Corp.®



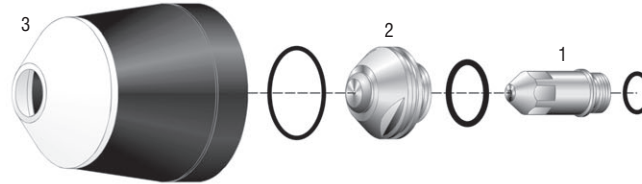
**SECTION
400**

PCH/M-140 STYLE TORCH HEAD COMPONENTS (STAK PAK®)



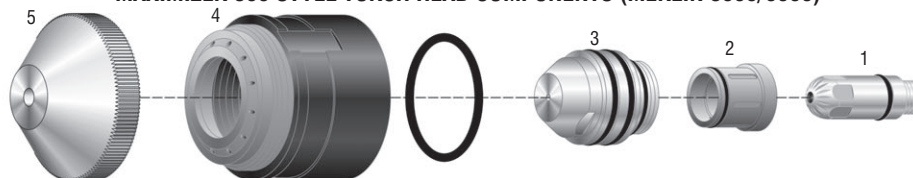
NO.	PROFAX	THERMAL DYNAMICS®	DESCRIPTION	NO.	PROFAX	THERMAL DYNAMICS®	DESCRIPTION
1.	PX9-6050	9-6050	Electrode, multi gas	5.	PX9-6035	9-6035	Tip, 105 amp, air/N ₂
	PX9-6110	9-6110	Electrode, gouging, air		6.	PX9-6036	9-6036
2.	PX9-6048	9-6048	Electrode, air	7.	PX9-6037	9-6037	Tip, gouging, .110
	PX9-6111	9-6111	Electrode, gouging, multi gas		PX9-6038	9-6038	Tip, gouging, .125
3.	PX9-6051	9-6051	Gas distributor	PX9-6039	9-6039	Tip, gouging, .156	
	PX9-6112	9-6112	Gas distributor, gouging	PX9-6040	9-6040	Tip, gouging, .171	
4.	PX9-6025	9-6025	Tip, air, 35 amp				
	PX9-6026	9-6026	Tip, air, 70 amp				
	PX9-6027	9-6027	Tip, air, 105 amp				
	PX9-6028	9-6028	Tip, air, 140 amp				
	PX9-6034	9-6034	Tip, 70 amp, air/N ₂				

PCH/M-150 STYLE TORCH HEAD COMPONENTS (MERLIN PAK® 15XC)



NO.	PROFAX	THERMAL DYNAMICS®	DESCRIPTION	NO.	PROFAX	THERMAL DYNAMICS®	DESCRIPTION
1.	PX9-5749	9-5749	Electrode (Air)	3.	PX9-5755	9-5755	Tip, 150 amp (gouging .120)
	PX9-5754	9-5754	Electrode (N ₂ -Ar/H ₂)		PX9-5756	9-5756	Tip, 85 amp (gouging .078)
	PX9-5760	9-5760	Electrode (O ₂)	PX9-5750	9-5750	Shield cup (ceramic)	
2.	PX9-5746	9-5746	Tip, 150 amp (Air .070)	PX9-5758	9-5758	Shield cup (tip exp.)	
	PX9-5747	9-5747	Tip, 100 amp (Air .055)	PX9-5774	9-5774	Shield cup (gouging)	
	PX9-5748	9-5748	Tip, 50 amp (Air .043)	PX9-5790	9-5790	Shield cup (metal)	
	PX9-5751	9-5751	Tip, 150 amp (O ₂ .070)	*	PX8-0557	8-0557	O-ring, small shield cup
	PX9-5752	9-5752	Tip, 100 amp (O ₂ .052)	*	PX8-5569	8-5569	Electrode wrench
	PX9-5753	9-5753	Tip, 50 amp (O ₂ .043)	*	PX8-5570	8-5570	O-ring, large shield cup
	PX9-5767	9-5767	Tip, 150 amp (N ₂ .067)	*	PX8-7061	8-7061	Tip wrench
	PX9-5766	9-5766	Tip, 100 amp (N ₂ .052)	*	PX9-5743	9-5743	Hand torch
	PX9-5765	9-5765	Tip, 50 amp (N ₂ .043)	*	PX9-5745	9-5745	Machine torch
	PX9-5775	9-5775	Tip, 150 amp (Ar/H ₂)				

MAXIMIZER 300 STYLE TORCH HEAD COMPONENTS (MERLIN 3000/6000)



NO.	PROFAX	THERMAL DYNAMICS®	DESCRIPTION	NO.	PROFAX	THERMAL DYNAMICS®	DESCRIPTION
1.	PX20-1021	20-1021	Electrode - 300 amp	4.	PX20-1033	20-1033	Tip, 225 amp
2.	PX20-1008	20-1008	Gas Distributor		PX20-1034	20-1034	Tip, 300 amp
	PX20-1009	20-1009	Gas Distributor	5.	PX20-1002	20-1002	Shield cup body
3.	PX20-1031	20-1031	Tip, 100 amp	5.	PX20-1004	20-1004	Shield cup, 100 - 225 amp
	PX20-1032	20-1032	Tip, 150 amp				

PROFAX is in no way affiliated with THERMAL DYNAMICS CORP. The parts advertised for sale are not genuine THERMAL DYNAMICS CORP parts, but are parts made for and by PROFAX. References to THERMAL DYNAMICS CORP machines, torches and numbers are for your convenience only. We reserve the right to substitute genuine THERMAL DYNAMICS CORP parts in place of PROFAX parts.



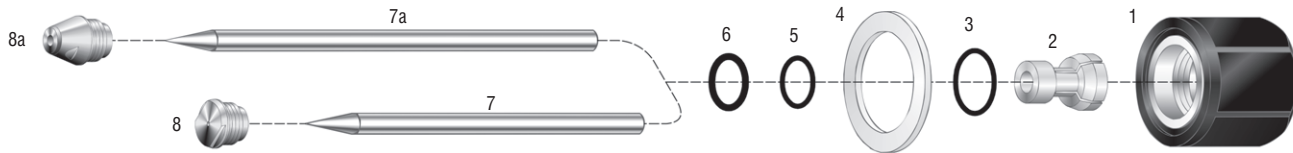
Replacement Parts Suitable For:

Thermal Dynamics Corp.®

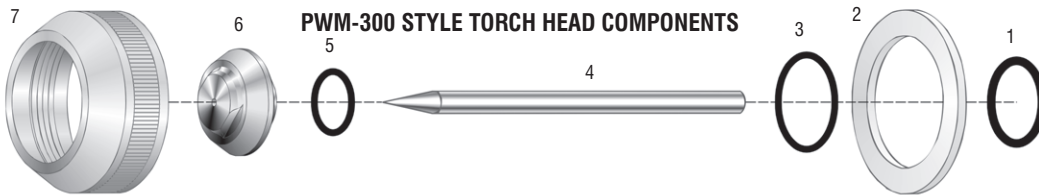


**SECTION
400**

4A STYLE TORCH HEAD COMPONENTS

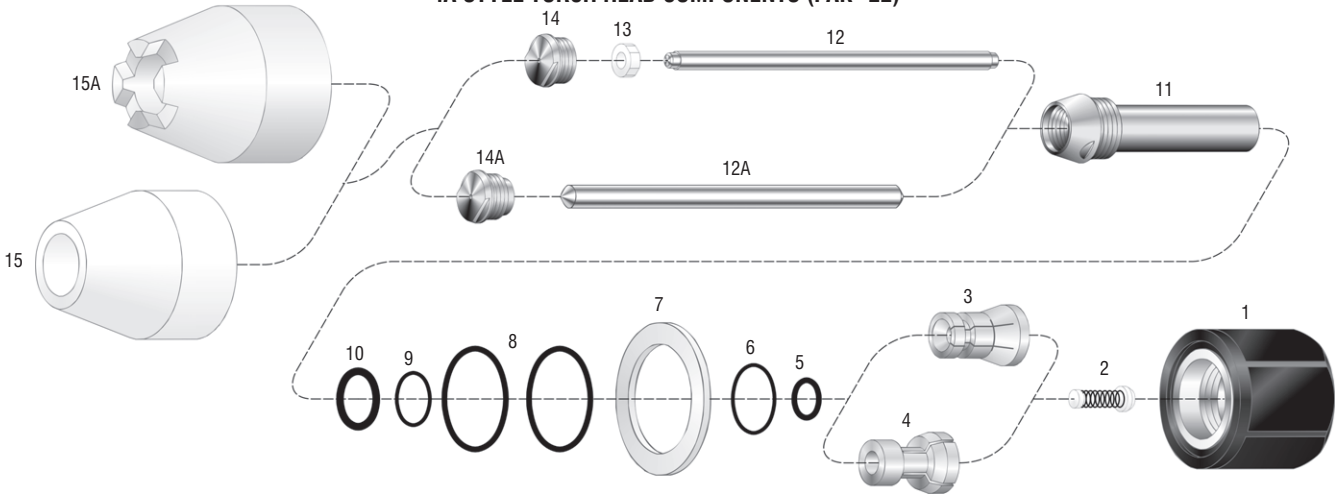


NO.	PROFAX	THERMAL DYNAMICS®	DESCRIPTION	NO.	PROFAX	THERMAL DYNAMICS®	DESCRIPTION
1.	PX8-4158	8-4158	Back cap	7a.	PX9-1834	9-1834	Electrode extended
2.	PX9-1876	9-1876	Collet	8.	PX9-1846	9-1846	Tip .046, 50 amp
3.	PX8-0530	8-0530	O-ring		PX9-1847	9-1847	Tip .062, 100 amp
4.	PX8-4069	8-4069	Gasket		PX9-1848	9-1848	Tip .093, 180 amp
5.	PX8-0528	8-0528	O-ring, black		PX9-1849	9-1849	Tip .125, 220 amp
6.	PX8-0560	8-0560	O-ring, red	8a.	PX9-1891	9-1891	Tip .093, long
7.	PX9-1827	9-1827	Electrode		PX9-1892	9-1892	Tip .125, long



NO.	PROFAX	THERMAL DYNAMICS®	DESCRIPTION	NO.	PROFAX	THERMAL DYNAMICS®	DESCRIPTION
1.	PX8-0531	8-0531	O-ring	6.	PX8-6575	8-6575	Tip .093, 200 amp
2.	PX8-6512	8-6512	Gasket		PX8-6582	8-6582	Tip .113, 250 amp
3.	PX9-2956	9-2956	O-ring		PX8-6572	8-6572	Tip .125, 300 amp
4.	PX9-1827	9-1827	Electrode				(Included with each tip 9-2863 & 9-2956 O-ring)
5.	PX9-2863	9-2863	O-ring	7.	PX8-6515	8-6515	End cap

4A STYLE TORCH HEAD COMPONENTS (PAK® 22)



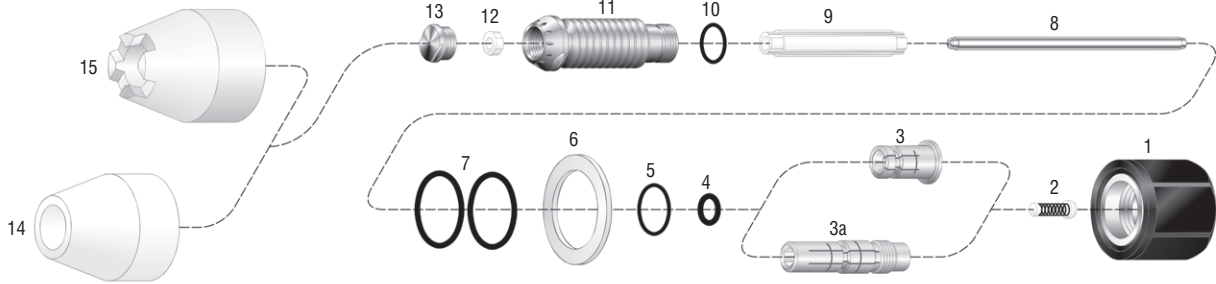
NO.	PROFAX	THERMAL DYNAMICS®	DESCRIPTION	NO.	PROFAX	THERMAL DYNAMICS®	DESCRIPTION
1.	PX8-4158	8-4158	Back cap	13.	PX9-2421	9-2421	Gas distributor
2.	PX8-4050	8-4050	Spring	14.	PX8-4153	8-4153	Tip .059, 100 amp
3.	PX8-4049	8-4049	Collet w/8-0525		PX8-4211	8-4211	Tip .046
4.	PX9-1876	9-1876	Collet	14a.	PX9-1847	9-1847	Tip .062, 105 amp
5.	PX8-0525	8-0525	O-ring		PX9-1848	9-1848	Tip .093, 250 amp
6.	PX8-0530	8-0530	O-ring		PX9-1849	9-1849	Tip .125, 400 amp
7.	PX8-4069	8-4069	Gasket	15.	PX8-4088	8-4088	Shield cup w/8-0554 (2)
8.	PX8-0554	8-0554	O-ring	15a.	PX8-4213	8-4213	Crown shield cup w/8-0554
9.	PX8-0528	8-0528	O-ring	*	PX8-4091	8-4091	Wrench
10.	PX8-0560	8-0560	O-ring	*	PX8-4002	8-4002	O-ring removal tool
11.	PX8-4011	8-4011	Liner w/8-0560 & 8-0528	*	PX8-4053	8-4053	Tip wrench
12.	PX8-4073	8-4073	Electrode	*	PX8-4025	8-4025	Lubricant
12a.	PX8-4029	8-4029	Electrode				

PROFAX is in no way affiliated with THERMAL DYNAMICS CORP. The parts advertised for sale are not genuine THERMAL DYNAMICS CORP. parts, but are parts made for and by PROFAX. References to THERMAL DYNAMICS CORP. machines, torches and numbers are for your convenience only. We reserve the right to substitute genuine THERMAL DYNAMICS CORP. parts in place of PROFAX parts.

* - Not Shown

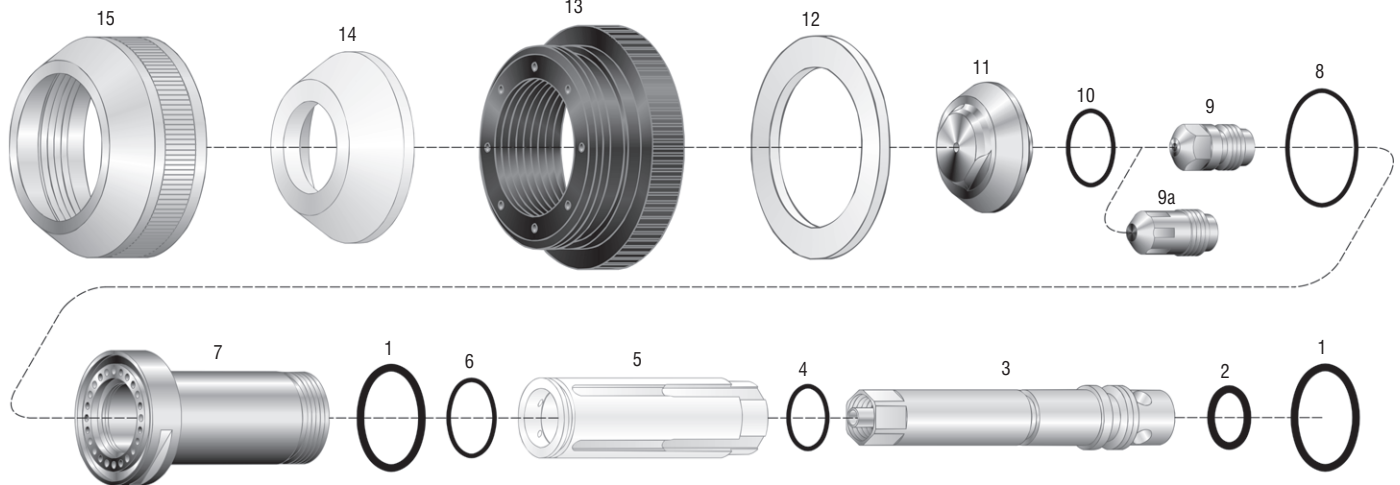


4B STYLE TORCH HEAD COMPONENTS (PAK® 10)



NO.	PROFAX	THERMAL DYNAMICS®	DESCRIPTION	NO.	PROFAX	THERMAL DYNAMICS®	DESCRIPTION
1.	PX8-4158	8-4158	Back cap (PCH-4B)				
2.	PX8-4050	8-4050	Spring		PX8-4211	8-4211	Tip .046
3.	PX8-4156	8-4156	Collet w/8-0525 (PCH-4B)		PX8-4212	8-4212	Tip .046 reverse swirl
3a.	PX8-4197	8-4197	Collet w/8-0525 (PCM-4BT)		PX8-4170	8-4170	Tip .070, 100 amp argon/hydrogen
4.	PX8-0525	8-0525	O-ring		PX8-4173	8-4173	Tip .070, 100 amp rev. swirl argon/hydrogen
5.	PX8-0530	8-0530	O-ring		PX8-4171	8-4171	Tip .030 reverse swirl
6.	PX8-4069	8-4069	Gasket		PX8-4189	8-4189	Tip .030
7.	PX8-0554	8-0554	O-ring	14.	PX8-4088	8-4088	Shield cup w/8-0554 (2)
8.	PX8-4073	8-4073	Electrode	15.	PX8-4213	8-4213	Crown shield cup w/8-0554
9.	PX8-4182	8-4182	Sleeve	*	PX8-5513	8-5513	O-ring tool
10.	PX9-2960	9-2960	O-ring	*	PX8-4091	8-4091	Tip wrench
11.	PX8-4154	8-4154	Liner w/9-2960	*	PX8-4157	8-4157	Liner wrench
12.	PX9-2421	9-2421	Gas distributor	*	PX8-4198	8-4198	Collet wrench (PCM-4B)
13.	PX8-4153	8-4153	Tip .059 lo-amp	*	PX8-4025	8-4025	Lubricant
	PX8-4172	8-4172	Tip .059 lo-amp reverse swirl	*	PX8-0532	8-0532	O-ring (for backcap:PCM-4B)

6B STYLE TORCH HEAD COMPONENTS (PAK® 44 & PAK® 45)



NO.	PROFAX	THERMAL DYNAMICS®	DESCRIPTION	NO.	PROFAX	THERMAL DYNAMICS®	DESCRIPTION
1.	PX8-0531	8-0531	O-ring				
2.	PX8-0527	8-0527	O-ring		PX8-6582	8-6582	Tip .113, 300 amp
3.	PX8-6615	8-6615	Electrode holder w/9-2960, 8-0527		PX8-6572	8-6572	Tip .125, 400 amp
4.	PX9-2960	9-2960	O-ring		(Included with each tip 9-2863 & 9-2956 O-rings)		
5.	PX8-6569	8-6569	Gas distributor w/8-3146	12.	PX8-6512	8-6512	Gasket
6.	PX8-3146	8-3146	O-ring	13.	PX8-6581	8-6581	Outer insulator
7.	PX8-6571	8-6571	Liner w/8-0531 & 9-2956	14.	PX8-6514	8-6514	End piece
8.	PX9-2956	9-2956	O-ring	15.	PX8-6515	8-6515	End cap
9.	PX8-6578	8-6578	Electrode, general purpose	*	PX8-4002	8-4002	O-ring removal tool
9a.	PX8-6586	8-6586	Electrode lo-amp	*	PX8-4025	8-4025	Lubricant
10.	PX9-2863	9-2863	O-ring	*	PX8-6517	8-6517	Tip wrench
11.	PX8-6580	8-6580	Tip .067, 100 amp	*	PX8-6573	8-6573	Electrode wrench
	PX8-6648	8-6648	Tip .076, 150 amp	*	PX8-6574	8-6574	Electrode holder wrench
	PX8-6575	8-6575	Tip .093, 200 amp	*	PX8-6587	8-6587	Reverse swirl gas distributor w/8-3146
				*	PX8-6629	8-6629	Tip

PROFAX is in no way affiliated with THERMAL DYNAMICS CORP. The parts advertised for sale are not genuine THERMAL DYNAMICS CORP. parts, but are parts made for and by PROFAX. References to THERMAL DYNAMICS CORP. machines, torches and numbers are for your convenience only. We reserve the right to substitute genuine THERMAL DYNAMICS CORP. parts in place of PROFAX parts.

NOTE: 7-2850 coolant
 1 gal. containers * - Not Shown
 4 gal. standard carton