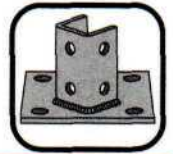


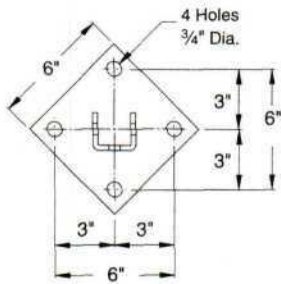
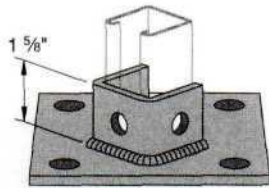


**POST BASE**

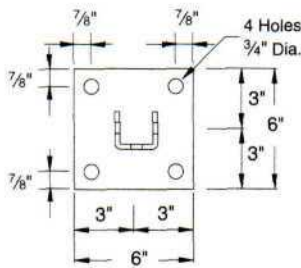
General Information  
 Fitting Thickness: 1/4"  
 Finish: Painted green or electro-galvanized  
 Hole Diameter: 9/16"  
 Hole Spacing: 1 3/16" from end, 1 7/8" on center  
 Order By: Part No. & finish



**PS 3013, PS 3013 SQ – Post Base**



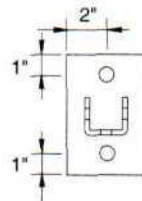
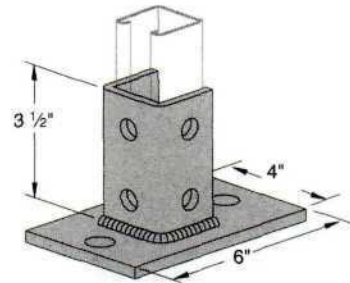
(PS 3013)



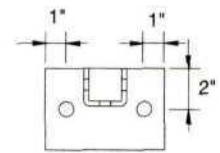
(PS 3013 SQ)

Weight/100 pcs: 307 lbs.

**PS 3025, PS 3025 FL – Post Base**



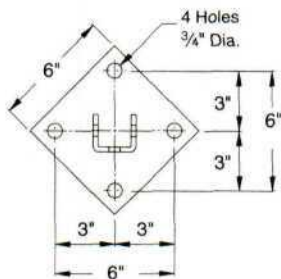
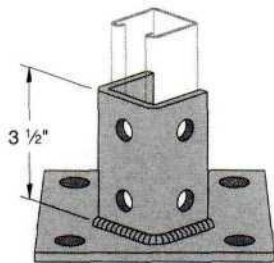
(PS 3025)



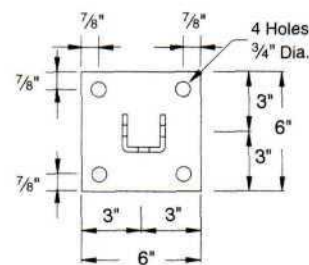
(PS 3025 FL)

Weight/100 pcs: 358 lbs.

**PS 3033, PS 3033 SQ – Post Base**



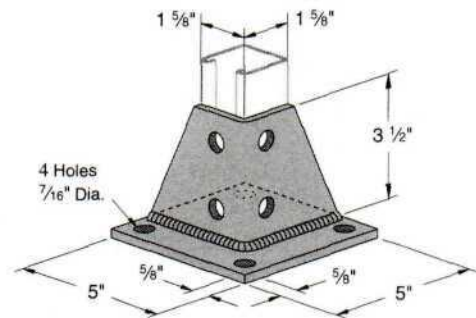
(PS 3033)



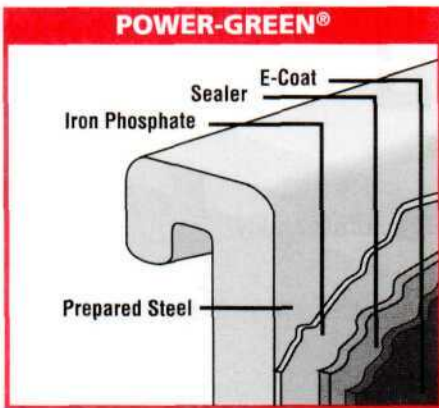
(PS 3033 SQ)

Weight/100 pcs: 373 lbs.

**PS 3040 – Post Base**



Weight/100 pcs: 297 lbs.



**POWER-GREEN® (GRN)** – Channel and parts are cleaned and phosphated. Immediately afterward, a uniform coat of rust-inhibiting acrylic enamel paint is applied by electro-deposition and thoroughly baked.

**Channel, Closures and Fittings**

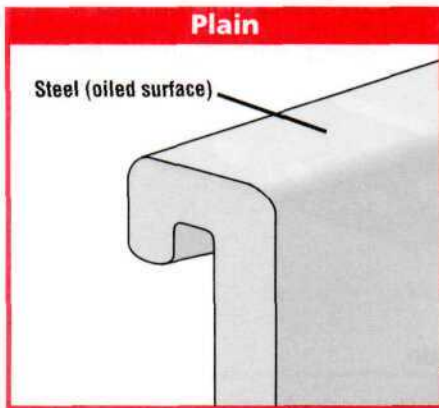
**Power-Green® TECHNICAL DATA**

**STEEL SUBSTRATE PREPARATION**  
Eight stage continuous cleaning, phosphate process.  
Substrate after “prep”: sealed iron phosphate conversion coating.

**COATING**  
Thermoset acrylic  
Color: Green Federal STD. 595A, Color No. 14109, Dark Limit V-.  
Hardness: 2H.  
Coating Process: Anodic Electrodeposition.

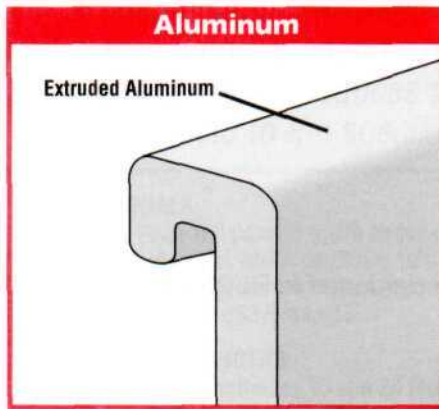
**PERFORMANCE**  
Salt Spray:  
Scribed: exceeds 400 hrs per ASTM B117.  
Unscribed: exceeds 600 hrs per ASTM B117.  
Chalk: nominal at 1,000 hrs per weatherometer G-23 test.  
Checking: None at 1,000 hrs per weatherometer G-23 test.  
Fade: Less than 50% compared to standard epoxy E.C. coatings.

**ENVIRONMENTAL ISSUES**  
Formulated as a “heavy metal”-free coating (trace elements only).  
Outgassing in service: essentially none at 350°F for 24 hrs.



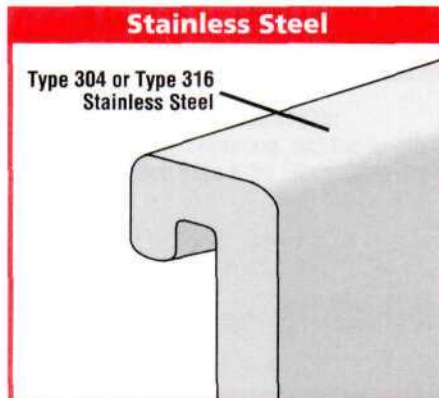
**PLAIN (PLN)** – Plain finish designation means that the channel retains the oiled surface applied to the raw steel during the rolling process. The fittings have the original oiled surface of the bar-stock material.

**Channel, Closures and Fittings**



**ALUMINUM (ALM)** – Channel is extruded aluminum in accordance with ASTM B221 Type 6063-T6.

**Channel, Closures and Fittings**



**STAINLESS STEEL** – Material in accordance with ASTM A 240 (Type 304 or type 316).

**Channel, Closures and Fittings**





## MATERIALS:

### Channel\* & Closures – Pre-Galvanized

ASTM A653 Grade 33, Steel Sheet Zinc Coated by Hot Dip Process

### Channel\* – Plain, Painted or Hot Dip Galvanized

ASTM A-570 Grade 33, Hot Rolled Carbon Steel Sheet and Strip, Structural Quality

### Channel\* – Stainless Steel

ASTM A-240, Type 304, Heat Resisting Chromium and Chromium-Nickel Stainless Steel Plate, Sheet, Strip for Pressure Vessel

### Channel\* – Aluminum

ASTM B-221, Type 6063 T6, Aluminum Alloy Extruded Bar, Rod, Wire, Shape and Tube

### Closures – Plain, Painted or Hot Dip Galvanized

ASTM A366, Steel, Strip, Carbon, Cold-Rolled

### Fittings\* – Steel

- 1/4" Nominal Thickness – ASTM A-575 and A576†
- 3/8" Nominal Thickness – A36 (Structural Steel)

### Fittings\* – Aluminum

ASTM B-209

### Accessories – Steel

- Less than 1/4" Nominal Thickness – ASTM A-569, 1008-1010 Grade, or (when Pre-Galvanized) ASTM A-527/Coating Designation G90

### Pipe Clamps – Steel

A-570 Grade 33

### Pipe Clamps – Stainless Steel

ASTM A-240, Type 304

### Pipe Clamps – Aluminum

ASTM B-209, 5052, H32 Grade, Sheet and Plate

### Channel Nuts

ASTM (3/8" & 1/2") A-576 Grade 1015M, A-675 (1/4") Grade 60, Case Hardened to RC25 min.

### Hex Nuts and Bolts

ASTM A-563, Grade A and ASTM A-307, Grade A

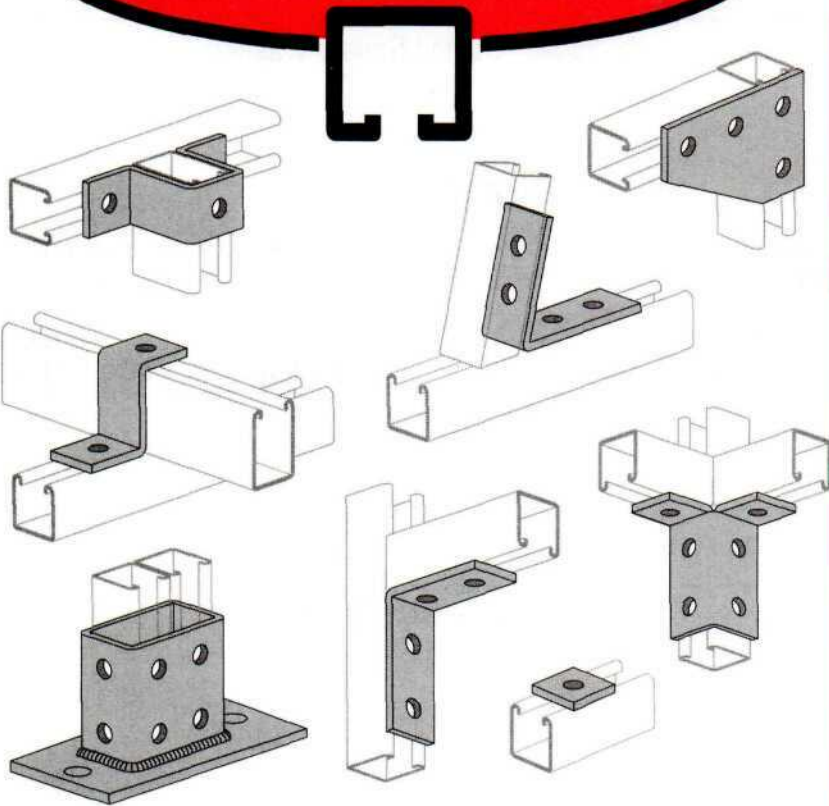
### Threaded Rod

ASTM A-510, Hot Rolled, 1008-1010 Grade

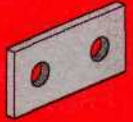
\* Channel referenced is 1 5/8" wide, fittings referenced are for 1 5/8" channel.

† Some 1/4" fittings are produced from A-36 Structural Steel.

# POWER-STRUT®



## FITTINGS



*Power-Strut has a wide variety of Fittings to meet all of your application requirements*

### **MATERIAL:**

All Power-Strut fittings are formed in punch press dies from mild, pickled and oiled, bar or strip steel. Plain or electro-galvanized fittings meet the requirements for ASTM A-575 and A-576, or ASTM A-36.

### **STANDARD DIMENSIONS:**

Standard dimensions on all fittings are as follows except where otherwise indicated:

Fitting Thickness:  $\frac{1}{4}$ "

Fitting Width:  $1\frac{5}{8}$ "

Hole Diameter:  $\frac{9}{16}$ "

Hole Spacing:  $1\frac{1}{8}$ " on centers and  $1\frac{3}{16}$ " from ends.

### **STANDARD FINISH:**

All Power-Strut fittings are available in painted green or electro-galvanized finish.

### **ORDERING INFORMATION:**

When ordering, add the length or size and finish to the part number. See pages 4 - 6 for finish abbreviations and an example.