

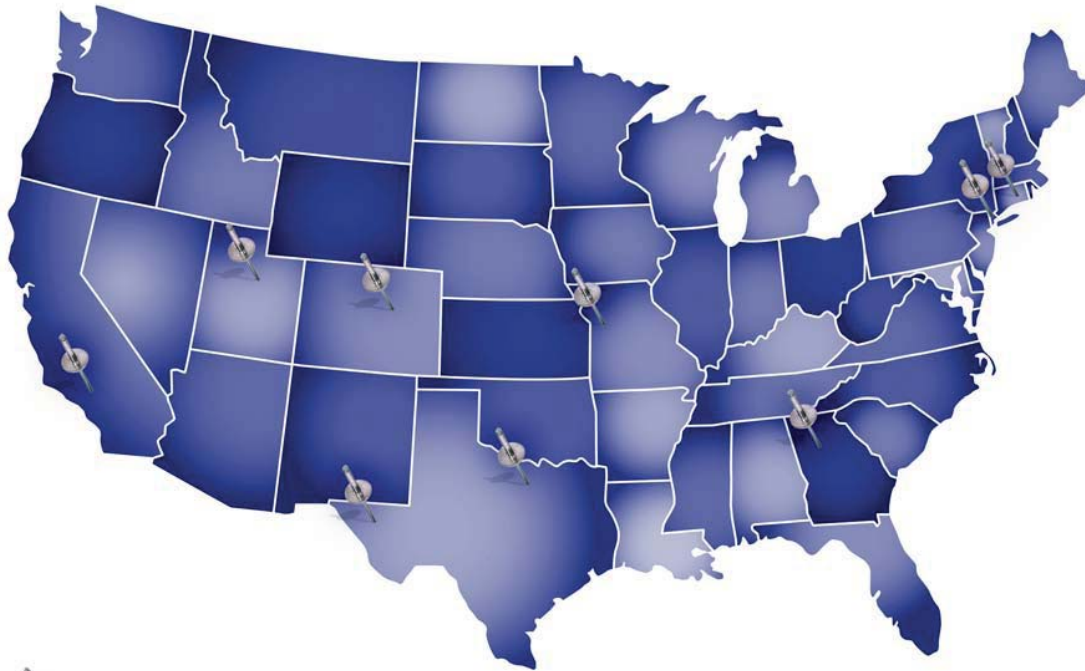


BLIND RIVET CATALOG



WWW.RIVETKING.COM

rivetking® distribution Locations



 rivetking® distribution Locations

**STOCK IS AVAILABLE FOR SAME DAY SHIPMENT FROM ANY ONE OF OUR 9 LOCATIONS.
SALES REPS AND TECHNICAL SUPPORT STAFF ARE AVAILABLE TO OUR CUSTOMERS NATIONWIDE.**

U.S.A. LOCATIONS

- NORTHVALE, NEW JERSEY
- LOS ANGELES, CALIFORNIA
- BRISTOL, CONNECTICUT
- DENVER, COLORADO
- ATLANTA, GEORGIA
- KANSAS CITY, MISSOURI
- EL PASO, TEXAS
- GRAND PRAIRIE, TEXAS
- SALT LAKE CITY, UTAH

WORLD WIDE LOCATIONS

- JUAREZ, MEXICO
- TAINAN, TAIWAN
- MADRID, SPAIN

WE WOULD LOVE TO HEAR FROM YOU. IF YOU HAVE ANY COMMENTS, QUESTIONS, OR *would like to order*, PLEASE CONTACT US TOLL FREE OR VISIT OUR WEBSITES.



**1.800.BUY.RIVET
1.800.289.7483**

WWW.RIVET.COM • WWW.RIVETKING.COM

CONTENTS

- 1 product overview 2007**
blind rivets, rivet nuts, collar bolts and tools
- 3 tools**
air/ hydraulic riveters, manual riveters, automation
- 7 rivet identification guide**
- 9 open end rivets**
aba series, abs series, sbs series, fbs series, fbf series
- 14 copper blind rivets**
cbs series, cbb series
- 15 back up washers**
- 16 closed end rivets**
aba-ce series, abs-ce series, fbf-ce series, sbs-ce series
- 20 multigr ip-rt™ rivets**
abs-rt series, aba-rt series
- 22 multigr ip-ct™ rivets**
abs-ct series, sbs-ct series
- 24 rivetking® k-vex™**
- 25 rivetking® rkq™**
- 26 rivetking® rivinox™ & rivibulb™**
- 27 rivetking® checkmate™**
- 28 rivetking® trifix™**
- 29 rivetking® super trifix™ & grooved rivets™**
- 30 peel rivets™**
- 31 long length rivet**
- 32 bralobolt® / rivetking® unobolt®**
- 33 rivetking® i-lock®**
- 34 rivetking® stemlock™**
- 35 fixed grip collar bolt**
- 37 multigr ip collar bolt**
- 38 cross reference table**



COPYRIGHT © 2007 BY RIVETKING. ALL RIGHTS RESERVED. NO PART OF THIS CATALOG, INCLUDING INTERIOR DESIGN, COVER DESIGN, AND IMAGES, MAY BE REPRODUCED OR TRANSMITTED IN ANY FORM, BY ANY MEANS (ELECTRONIC, PHOTOCOPYING, RECORDING, OR OTHERWISE) WITHOUT PRIOR WRITTEN PERMISSION FROM RIVETKING.



PRODUCT OVERVIEW 2007

BLIND RIVETS ° RIVET NUTS ° COLLAR BOLTS ° TOOLS



BLIND RIVETS

Light duty	Medium duty	Heavy duty (Structural)	Fixed Hole size	Variable / OverSize Hole	Fixed GRIP Range	Variable GRIP Range	Extra wide Grip Range	Weather Resistant / waterTIGHT	Fastening to Metal	Fastening to Soft OR BRITTLE Materials	Fastening to Wood	Fastening to Locked MandRel (Hidden)	Internally Locked MandRel (Visible)	Externally Locked MandRel	Non-Mechanical Locked MandRel	Anti-Hetic Backside Portusion	Removable	Increased assembly speed
------------	-------------	-------------------------	-----------------	--------------------------	------------------	---------------------	-----------------------	--------------------------------	--------------------	--	-------------------	--------------------------------------	-------------------------------------	---------------------------	-------------------------------	-------------------------------	-----------	--------------------------

rivetking®	pop®	avdel®	huck®	gesipa®	marson®	celus®	Light duty	Medium duty	Heavy duty (Structural)	Fixed Hole size	Variable / OverSize Hole	Fixed GRIP Range	Variable GRIP Range	Extra wide Grip Range	Weather Resistant / waterTIGHT	Fastening to Metal	Fastening to Soft OR BRITTLE Materials	Fastening to Wood	Fastening to Locked MandRel (Hidden)	Internally Locked MandRel (Visible)	Externally Locked MandRel	Non-Mechanical Locked MandRel	Anti-Hetic Backside Portusion	Removable	Increased assembly speed	
standard blind rivets																										
open end	Open End	N Rivet	GRipRite	Open End	Open End	Open End	◆			◆		◆				◆										
closed end	Cl Osed End	sR Rivet		Cap Rivet s®	Cl Osed End	Cl Osed End	◆			◆		◆				◆										
multigrip rivets																										
mul ti-grip-rt™ / mul ti-grip-ct™	Mul ti GRip	avex®		pOl yGRip	Mul ti-G Rip™	Mul ti GRip	◆			◆		◆				◆										
tri-folding / load spreading rivets																										
tri fix™	Is R LOad® spReadin G	Bul Bex®		tR i-FOLD®	tR i-Bul B®	Cel usplit®	◆					◆				◆										
super tri fix™		Kla Mptite® / TLR*	MaGnat ite®	Bul B-ite®			◆					◆				◆										
structural blind rivets																										
bral obol t™ / uno bol t™		MO nOBol t®				tiGeRBol t®		◆	◆							◆										
il lock™	ul t RaGRip®	inte RI OCK®	MaGna I OK®	MeGaGRip®	Kli K-I OCK®			◆	◆							◆										
stem lock™		HeMI OK®	aut O-Bul B / MaGnaBul B®					◆	◆							◆							◆	◆		
			HuCKI OCK®					◆	◆							◆							◆	◆		
semi-structural blind rivets																										
rk q™		Q-Rivet®	st ROnGHOld™					◆	◆							◆								◆		
k vex™		stavex®						◆		◆		◆				◆								◆	◆	
r ivino x™ / r ivibulb™	HR Rivet®	avi Bul B® / avin Ox®						◆		◆	◆					◆							◆	◆		
extra wide grip rivets																										
checkmate™		ChERryMate®						◆		◆						◆		◆	◆							
tube rivet s™			aut OCla Mp®					◆		◆						◆		◆	◆							
speciality blind rivets																										
gentle set™	sOFt Set®							◆		◆	◆					◆		◆	◆							
easy entry™	easy entry®							◆		◆	◆					◆		◆	◆							◆
grooved rivet s	GROOved Rivet s			GROOved Rivet s				◆		◆	◆					◆		◆	◆							
plr™ rivet s	peel Rivet s		peel	peel				◆		◆	◆	◆				◆		◆	◆							
terminal rivet s		eaRt HtaB Rivet						◆		◆	◆					◆		◆	◆							
			FI OORt ite																							
						QuiKs nap®										◆										
speed fastening™ / quickriveting™																										
Zipriv™		BRiv®						◆		◆	◆					◆		◆	◆					◆	◆	
Zipsho™		CHOBeRt®								◆	◆					◆		◆	◆					◆	◆	
ZipscREW™		RivsCREW®						◆		◆	◆					◆		◆	◆					◆	◆	
Zipgroove™		GROvit®						◆		◆	◆					◆		◆	◆					◆	◆	
Ziptronic™		avt ROniC®						◆		◆	◆					◆		◆	◆					◆	◆	

◆ standard Feature ◆ application / product dependent

AVEX®, MONOBOLT®, BULBEX®, TLR®, CHERRYMATE®, MONOBOLT®, INTERLOCK®, HEMLOK®, STAVEX®, AVINOX® AND AVIBULB® ARE REGISTERED TRADEMARKS OF TEXTRON FASTENING SYSTEMS AND ACCUMENT GLOBAL TECHNOLOGIES INC. LSH® AND ULTRA-GRIP® IS A REGISTERED TRADEMARK OF EMHART FASTENING TECHNOLOGIES. TRI-BULB®, MAGNA-TITE®, AUTO-BULB® AND KLIK-LOCK® ARE REGISTERED TRADEMARKS OF ALCOA FASTENING SYSTEMS. CELUSSPLIT® AND TIGERBOLT® ARE REGISTERED TRADEMARKS OF CELUS FASTENERS.



K I

PRODUCT OVERVIEW 2007

BLIND RIVETS • RIVET NUTS • COLLAR BOLTS • TOOLS



LOCK BOLTS

	pop®	avdel®	huck®	gesipa®	mar son®	celus®	Light Duty	Medium Duty	Heavy Duty (stRuctu Rel)	Fixed Hole Size	Variable / OverSize Hole	Fixed Grip Range	Variable Grip Range	Variable Wide Grip Range	Weather Resistant / Water Tight	Fastenin G to Metal	Fastenin G to Metal	Fastenin G to WOOD	Fastenin G to LOCKED Mand Rel (Hidden)	InterNal y LOCKED Mand Rel (VisaBle)	exteRnal y LOCKED Mand Rel	nOn-MeChaniCal LOCKED Mand Rel	Fasten On BaCkside PORT Rust On	ReMOvaBle	InCreased AsseMBl y Speed
collar bolt™6		avdel OK®	C6I®				◆	◆		◆	◆	◆	◆	◆	◆	◆	◆								
collar bolt™50		avdel OK®	C50I®					◆	◆	◆	◆	◆	◆	◆	◆	◆	◆								
collar bolt™120		avdel OK®	C120I®							◆	◆	◆	◆	◆	◆	◆	◆								
collar bolt™ mul tigrip		Max I OK®	MaGnaGRip®				◆	◆		◆	◆	◆	◆	◆	◆	◆	◆								
blind collar bolt®		CaMtaine R®	BOM Rivet®																						
			HuCKtaine R®																						



RIVET NUTS

	pop®	avdel®	huck®	gesipa®	mar son®	celus®	Light Duty	Medium/Heavy Duty	Fixed Hole Size	Variable / OverSize Hole	Fixed Grip Range	Variable Grip Range	Variable Wide Grip Range	Weather Resistant / Water Tight	OFFERED In ClOsed End	plastiC OI Can Be applied	Fastenin G LO Metal	Fastenin G LO WOOD	Fastenin G LO WOOD	Fastenin Resistant ant	ReMOvaBle	
rubber nut™	well-nut®						◆		◆	◆	◆	◆	◆	◆	◆	◆	◆	◆	◆	◆	◆	◆
Jk nut™	JaCK-nut®						◆		◆	◆	◆	◆	◆	◆	◆	◆	◆	◆	◆	◆	◆	◆
rivi nut s™	pOpn ut®				Kli KRivet nuts®	Cel-nut®	◆	◆	◆	◆	◆	◆	◆	◆	◆	◆	◆	◆	◆	◆	◆	◆
vari nut™		veRsanut®					◆	◆	◆	◆	◆	◆	◆	◆	◆	◆	◆	◆	◆	◆	◆	◆
swagenut™		supeRseRt®			Kli K-seRts/pOIlynuts®		◆	◆	◆	◆	◆	◆	◆	◆	◆	◆	◆	◆	◆	◆	◆	◆



TOOLS

	pop®	avdel®	huck®	gesipa®	mar son®	celus®	FOR ContinUous PRoduCtiOn Use	FOR Maintenan Ce and Repair	disPOsaBle	Heavy Duty	tOOl Balan CeR HOOKup	Light Duty	BlOw MOldeD CaRRy Case	3 Jaw DesiGn	eRGOnOMiC	SHOCK Resistant ant	LightweiGht	Body BOOt & NOse PieCe StORage	HIGH Speed Rivetin G-Syste Ms
bral o® armad a™ series	pROset®	Genesis tOOls®	FI SeSeries	tauRus	302E/ 304e		◆		◆	◆				◆	◆	◆	◆		
Zipp® Zt™ series	pRG SeSeries			pH SeSeries	M SeSeries			◆						◆		◆	◆	◆	
rivet king® rk™ series					V SeSeries	I a COBRa						◆				◆	◆	◆	
rivet king® quick riveting®																◆	◆	◆	
autof ast®	pOpMatIC Rivet tOOls®	avdel Speed Fastenin G®		GaV Systeme Ms®			◆					◆	◆	◆	◆	◆	◆	◆	◆

◆ standard Feature ◆ application / production dependent



AVEX®, MONOBOLT®, BULBEX®, TLR®, CHERRY MATE, MONOBOLT®, INTERLOCK®, HEMLOK®, STAVEX®, AVINOX® AND AVIBULB® ARE REGISTERED TRADEMARKS OF TEXTRON FASTENING SYSTEMS AND ACCUMENT GLOBAL TECHNOLOGIES INC. LSH® AND ULTRA-GRIP® IS A REGISTERED TRADEMARK OF EMHART FASTENING TECHNOLOGIES. TRI-BULB®, MAGNA-TITE®, AUTO-BULB® AND KLIK-LOCK® ARE REGISTERED TRADEMARKS OF ALCOA FASTENING SYSTEMS. CELUSSPLIT® AND TIGERBOLT® ARE REGISTERED TRADEMARKS OF CELUS FASTENERS.

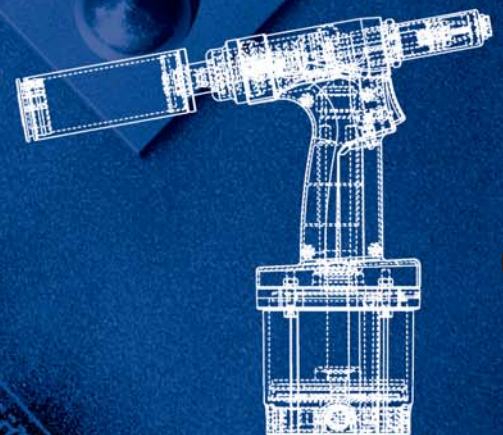
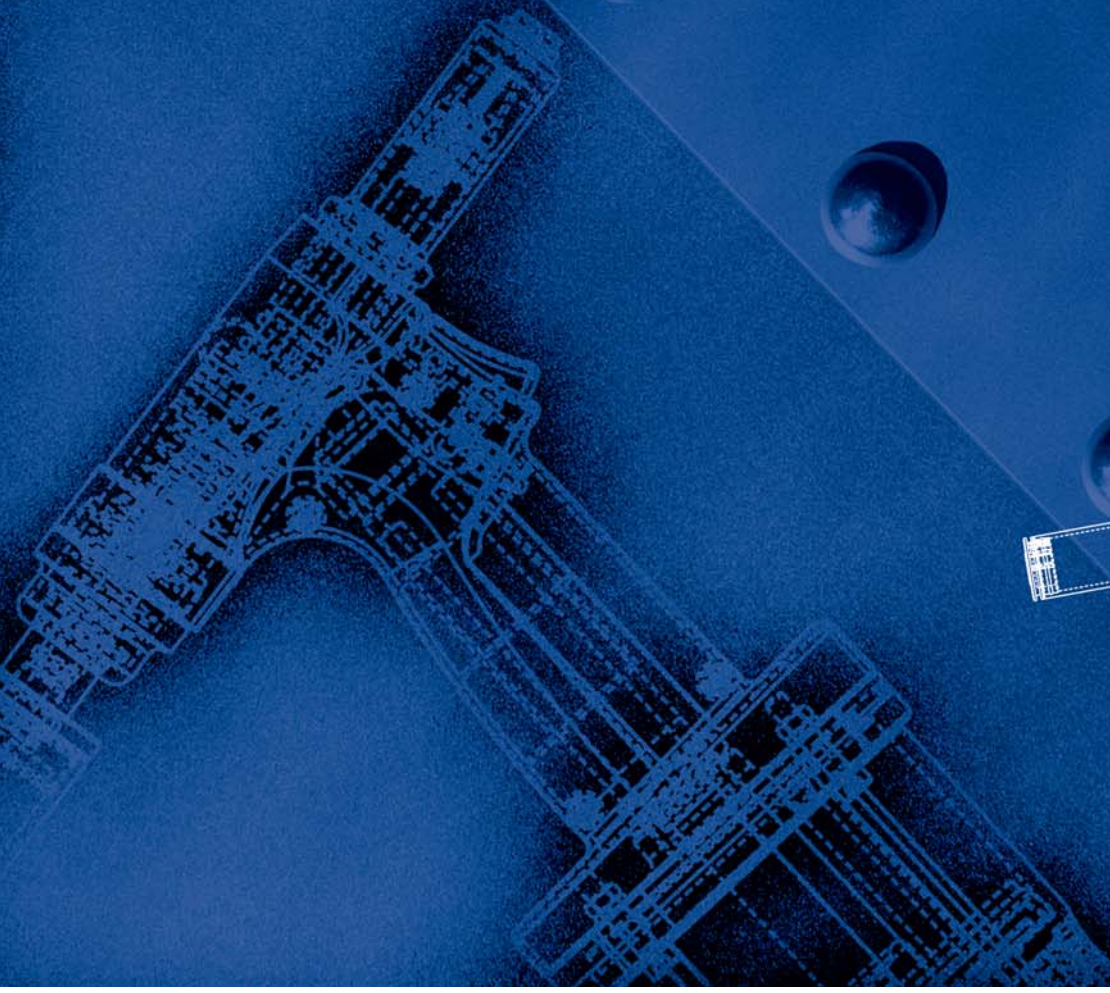
R I V E T



K I N G[®]

TOOLS

AIR/ HYDRAULIC RIVETERS · MANUAL RIVETERS · AUTOMATION



air/hydraulic riveters

BM SERIES · BRALO ARMADA™ TOOLS

quick, lightweight, ergonomic, shock resistant and easily serviceable.

The armada tool lineup is the best choice for a demanding, high volume production oriented environment. triple Jaws and vacuum Mandrel collection is standard on blind riveters. For the rivetnut installation tools the touch sensitive thread-on, coupled with the 1 button spin pull design insures ease of assembly.



BM-500 5/32" MAX.

BM-700 3/16" MAX.

BM-900 1/4" MAX. & STRUCTURALS



FOR RIVET NUTS / THREADED INSERTS

TR-1000 5/16" MAX. M8 MAX.

TR-2000 1/2" MAX. M12 MAX.

ZT SERIES · ZIPP® TOOLS

heavy duty, rugged, portable and reliable tools with all the bells and whistles you have come to expect from premium blind riveters. vacuum Mandrel Collection, on-board nose piece storage along with a blow molded carry case is standard. a patented stroke adjustment makes changeovers a breeze and the rubber boot protects the tool during use.



ZT-0318 1/8" MAX.

ZT-0618 5/32" MAX.

ZT-1214 3/16" MAX.

ZT-0918 3/16" MAX" & STRUCTURALS

ZT-1819 1/4" MAX. & STRUCTURALS

RK SERIES · RIVETKING® TOOLS

built with quality and economy in mind, the rk series riveters have enough force to pull any rivet. perfect for diy market and for situations where abuse or theft is of concern. the RK-187-e is an ergonomic and lightweight model that has vacuum Mandrel collection and is a break-away from the traditional design.



RK-187 3/16" MAX.

RK-250 1/4" MAX. & STRUCTURALS

RK-187-E ERGONOMIC MODEL

RK-INLINE 3/16" MAX.



MANUAL RIVETERS

RIVETKING® MANUAL BLIND RIVET TOOLS



RK-65 3/16" MAX.
NOSEPIECES ONBOARD

RK 65 BLIND RIVETING TOOL

PART NUMBER	DESCRIPTION
RK65	BOX PACKAGING
RK65-A	KIT W/ ALUMINUM RIVETS
RK65-S	KIT W/ STEEL RIVETS
RK65-F	KIT W/ STAINLESS RIVETS



BM-90 3/16" MAX CAPACITY



BM-93 1/4" MAX CAPACITY
STRUCTURAL RIVETS



BM-67 3/16" MAX CAPACITY
STRUCTURAL RIVETS

RIVETKING® 2 IN 1- BLIND RIVET & RIVET NUT TOOL

why buy two tools when you only need one?

This unique tool has the ability to set both blind rivets and rivetnuts. It even has the ability to set 1/4" structural blind rivets and rivetnuts up to 1/2". The changeover from blind rivets to rivet nuts is simple and takes less than 1 minute. It's patented fold away design makes it easy to carry and store. It contains a nose piece for blind rivets and mandrels for rivetnuts in every size and is conveniently stored in the blow molded carry case. Forged steel arms insure durability while comfort soft touch rubberized grips guarantee comfort.



"OR"



RK-21 BLIND RIVETS = 1/4" & STRUCTURAL RIVET
NUTS = 1/2" OR 12MM

MANUAL RIVETNUT TOOLS



RK-100 1/4-20"
6MM" MAX.



RK-100 BLIND RIVETING TOOL

PART NUMBER	DESCRIPTION
RK100	BOX PACKAGING
RK100-AP	KIT W/ ALUMINUM RIVETS
RK100-SP	KIT W/ STEEL RIVETS
RK100-3P	KIT W/ STAINLESS RIVETS



RK-21 1/2-13"
12MM MAX.



TR-200
8MM MAX.



TR-208
8MM MAX.



TR-212
12MM MAX.



TR-300
8MM MAX.



automation

QUICKRIVETING SYSTEMS

Rivets are provided on magazines called pods with up to 80 rivets on a pod. Pods are easily loaded into a lightweight 3lbs riveting handle for installation of up to 1 rivet per second. Rivets are installed by the withdraw of a re-usable mandrel and radially expanding the entire body of the rivet. Because the mandrel is completely withdrawn there is no mandrel waste on the assembly floor. Perfect for electronics applications.

ADDITIONAL ADDED VALUE FEATURES INCLUDE:

- Increased Output
- Reduced Labor
- Minimal Waste
- Improved Ergonomics
- Cost Savings
- Improved Joint Quality and Performance
- Fine Tuning and Flexibility
- Reliability and Consistency



Quickrivets, Zipriv, Zipsho, Zipcrew



RK-753
STANDARD MODEL

RK-753-I
STANDALONE RIVETING TOOL

RK-753-P
PANTOGRAPH RIVETING TOOL

AUTOFAST RIVETING SYSTEMS

Rivets are provided on a continuous feed system. Rivets are factory installed in mylar tape which is fed through the nose of the riveter. Once the rivet is applied the next rivet is fed to the nose and the take-up spool gathers the waste of the mylar tape. Spent mandrel are drawing into a mandrel catcher located at the rear of the tool. Any standard blind break stem blind rivet can be installed into the mylar strips. Any standard, specialty or structural rivet can be fed into the nose of this tool.



AVAILABLE MODELS	
AF - 500	5/32" MAX
AF - 700	3/16" MAX
AF - 900	1/4" MAX & STRUCTURAL RIVETS

RIVETKING® RIVETS THAT CAN BE INSTALLED INTO MYLAR STRIPS:

STANDARD RIVETS:

- Open End
- Closed End
- Multigrip
- Trifix
- Peel

SEMI-STRUCTURAL RIVETS:

- RK-Q™
- Rivinox™
- K-Vex™
- RiviBulb™
- SuperTriFix™

STRUCTURAL RIVETS:

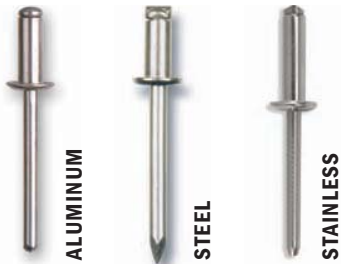
- Bralobolt™
- I-Lock™
- Stemlock™



Rivet identification guide

STANDARD BLIND RIVETS

OPEN END



CLOSED END

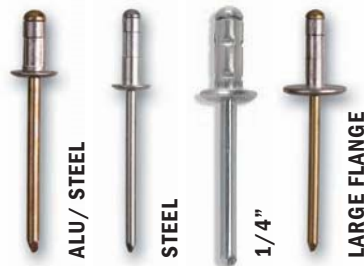


CHECKMATE™ 2PCS



MULTIGRIP BLIND RIVETS

MULTIGRIP-CT™



MULTIGRIP-RT™



TRI-FIX (TRI-FOLDING) SUPERTRIFIX™



SEMI-STRUCTURAL BLIND RIVETS

RIVINOX™



BRALOBULB™



K-VEX™



TRADE NAME CROSS REFERENCE CHART

RIVETKING®	AVDEL®	POP®	HUCK®	MARSON®	CELUS®
Multigr iPct™	avex®	-	-	Multigr iP	-
Multigr iPrt™	-	-	-	-	Multigr iP
tr iFix™	bulbex®	Multigr iP	tr i-bulb™	-	-
su Per tr iFix™	bulbex®	l sHø	Magna-tite™	-	celusPlit™
cHeckMate™	cHerryMate™	-	-	-	-
br alobolt™	Monobolt®	-	-	-	-
i-lock™	interlock®	-	Magna-lok™	klik-lock™	tiger bolt®
steMlock™	HeMlok®	ultragrip®	auto-bulb™	-	-
k-vex™	stavex®	-	-	-	-
r ivinox™	avinox®	-	-	-	-
br alobulb™	avibulb®	-	-	-	-

STRUCTURAL RIVETS

BRALOBOLT™



I-LOCK™



STEMLOCK™



MULTIGRIP LOCK BOLT™



FIXEDGRIP LOCK BOLT™



AVEX®, MONOBOLT®, BULBEX®, TLR®, CHERRYMATE, MONOBOLT®, INTERLOCK®, HEMLOK®, STAVEX®, AVINOX® AND AVIBULB® ARE REGISTERED TRADEMARKS OF TEXTRON FASTENING SYSTEMS AND ACCUMENT GLOBAL TECHNOLOGIES INC. LSH® AND ULTRA-GRIP® IS A REGISTERED TRADEMARK OF EMHART FASTENING TEKNOLOGIES. TRI-BULB®, MAGNA-TITE®, AUTO-BULB® AND KLIK-LOCK® ARE REGISTERED TRADEMARKS OF ALCOA FASTENING SYSTEMS. CELUSSPLIT® AND TIGERBOLT® ARE REGISTERED TRADEMARKS OF CELUS FASTENERS.

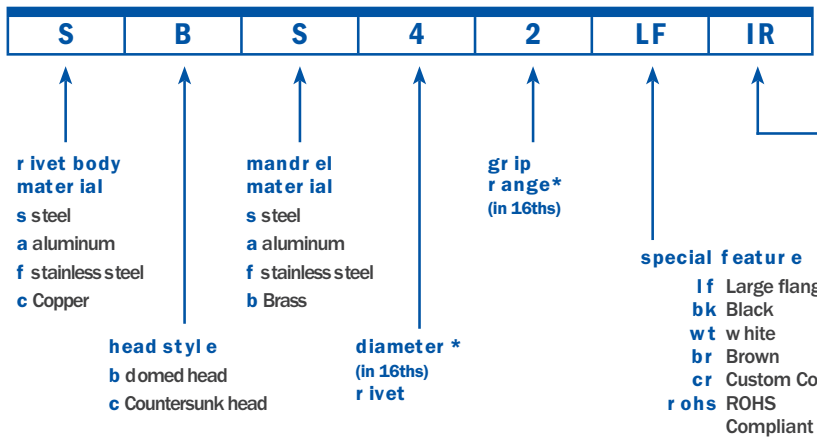


your guide to selecting rivetking® blind rivets

STRENGTH	RIVET MATERIAL	HOLE SIZE	WORK THICKNESS	RIVET TYPE	HEAD STYLE
determine the shear and tensile strengths required for your application and then select the best rivet to meet that requirement. Rivet style, material, diameter and fastener spacing all contribute to the ability of a rivet to hold the material properly.	select a rivet which is made of a similar or compatible metal to the material you are joining. Other factors to consider are the environment in which the finished product will be placed, levels of moisture, high temperatures or corrosive atmosphere.	Our rivets are available in five diameters: <ul style="list-style-type: none"> • 3/32" • 1/8" • 5/32" • 3/16" • 1/4" it is extremely important that the hole size be correct to assure that our rivets perform properly.	Measure the total thickness of the material to be fastened in order to determine the required grip of the rivet. Be sure to select a sufficient grip range to allow the secondary head of the rivet to properly form.	RivetKing® Blind Rivets are available in several styles categorized as: <ul style="list-style-type: none"> • open end • Closed end • MultiGrip • rear Flange • load spreading • long Grip • radial expansion • structural (locking) • Hammer drive each type of rivet has its own benefits such as watertite, tri-folding or locking features. For more details on the rivet that is right for your application, consult the product overview or the specific product page in this catalog.	three different head styles are available. dome head is the standard. Large Flange for increased bearing surface and Countersunk for near flush installation in a countersunk hole.

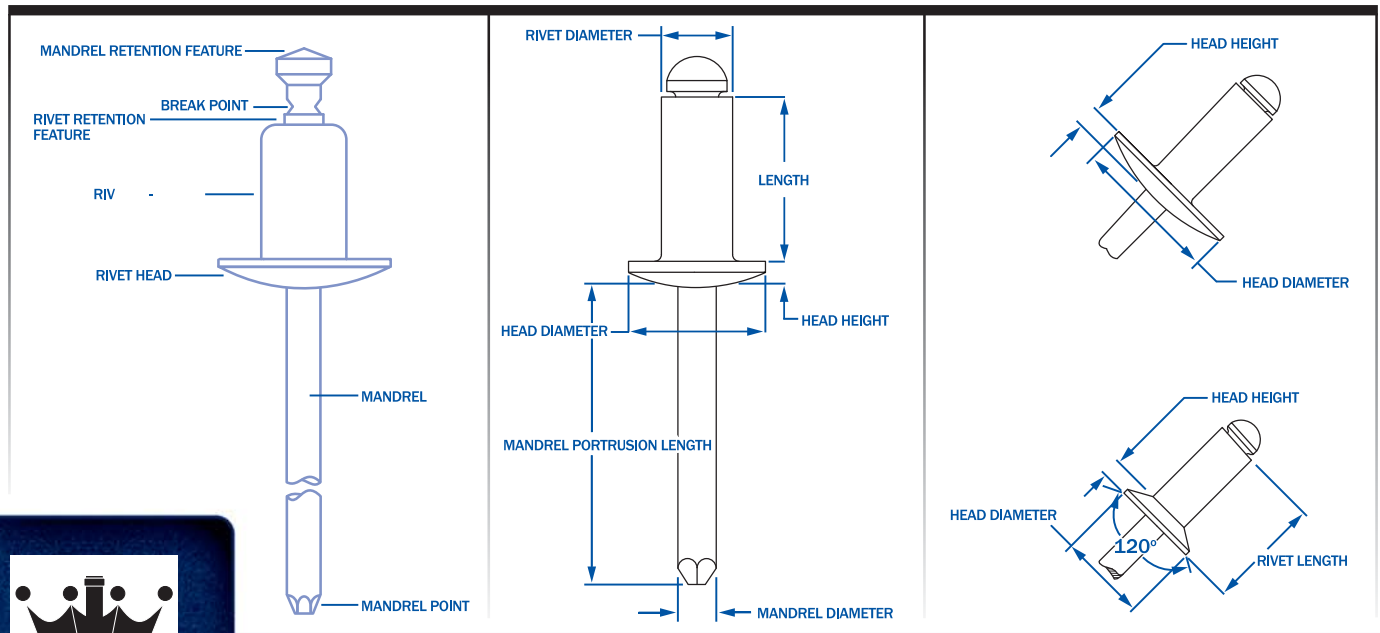
DOMED HEAD

Industrial Rivet's part numbers are made up of six elements which, when correctly designated, completely describe the desired rivet. For large flange rivets, however, a 7th element (the suffix letter F) are required.



* in some instances these are replaced with a "part code" instead a fractional designation.

BLIND RIVET ANATOMY



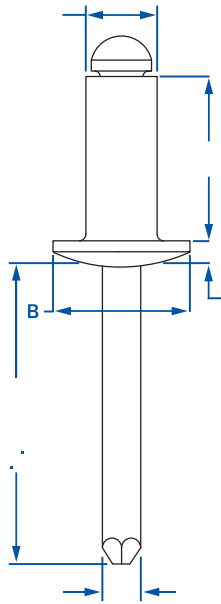
aba series • all aluminum rivets • OPEN END

RIVET: 5052 ALUMINUM • MANDREL: ALUMINUM

rivetking® aluMinuM/aluMinuM blind rivets bright Polished to improve oxidation resistance and overall aesthetics of the riveted product. Our rivets are made from genuine, one-grade materials to insure consistent error free application from rivet to rivet. A special treatment applied to the rivet insures the mandrel will be encased by the rivet during application. The blunt diamond point prevents injury while improving application speed. All aluminum rivets are ranked #5 in shear and tensile strength for open end standards.

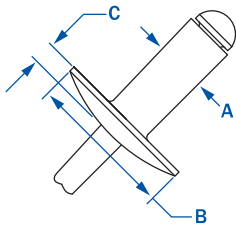


STANDARD FLANGE-DOME HEAD



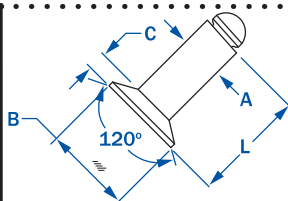
DIA.	PART NUMBER	GRIP RANGE	RIVET LENGTH	HEAD DIA.	HEAD HEIGHT	MANDREL DIA.	HOLE SIZE (DRILL #)	STRENGTH		Wt. lbs/M
								SHEAR	TENSILE	
3/32"	aBA - 32	.020 - .125	.250	.188	.032	.057	.097 - .100 (#41)	70	80	.70
	aBA - 34	.126 - .250	.375							.70
	aBA - 41	.020 - .062	.212							1.00
1/8"	aBA - 42	.063 - .125	.275	.250	.040	.076	.129 - .133 (#30)	120	150	1.10
	aBA - 43	.126 - .187	.337							1.20
	aBA - 44	.188 - .250	.400							1.30
	aBA - 45	.251 - .312	.462							1.40
	aBA - 46	.313 - .375	.525							1.50
	aBA - 48	.376 - .500	.650							1.67
	aBA - 410	.501 - .625	.775							
	aBA - 412	.626 - .750	.900							
	aBA - 52	.020 - .125	.300							.312
aBA - 53	.126 - .187	.362	2.00							
aBA - 54	.188 - .250	.425	2.00							
5/32"	aBA - 56	.251 - .375	.550	.375	.060	.114	.192 - .196 (#11)	260	320	2.50
	aBA - 58	.376 - .500	.675							2.50
	aBA - 62	.020 - .125	.325							2.80
	aBA - 63	.126 - .187	.387							2.90
	aBA - 64	.188 - .250	.450							3.00
	aBA - 66	.251 - .375	.575							3.40
	aBA - 68	.376 - .500	.700							3.75
	aBA - 610	.501 - .625	.825							4.25
	aBA - 612	.626 - .750	.950							4.50
3/16"	aBA - 614	.751 - .875	1.075	.500	.080	.151	.257 - .261 (F)	460	560	5.00
	aBA - 616	.876 - 1.00	1.200							5.33
	aBA - 84	.020 - .250	.500							6.50
	aBA - 86	.251 - .375	.625							7.00
	aBA - 88	.376 - .500	.750							7.50
	aBA - 810	.501 - .625	.875							8.50
1/4"	aBA - 812	.626 - .750	1.000	.750	1.07	.151	.257 - .261	460	560	8.50
	aBA - 814	.751 - .875	1.125							10.00
	aBA - 816	.876 - 1.00	1.250							9.88

LARGE FLANGE



1/8"	aBA - 421 F	.063 - .125	.275	.375	.065	.076	.129 - .133 (#30)	120	150	1.20
	aBA - 431 F	.126 - .187	.337							1.30
	aBA - 441 F	.188 - .250	.400							1.40
	aBA - 461 F	.313 - .375	.525							1.75
	aBA - 481 F	.376 - .500	.650							1.89
5/32"	aBA - 521 F	.020 - .125	.300	.468	.075	.095	.160 - .164 (#20)	190	230	2.75
	aBA - 541 F	.188 - .250	.362							2.94
	aBA - 561 F	.251 - .375	.425							
	aBA - 621 F	.020 - .125	.325							
3/16"	aBA - 641 F	.188 - .250	.387	.625	.092	.114	.192 - .196 (#11)	260	320	4.67
	aBA - 661 F	.251 - .375	.450							5.00
	aBA - 681 F	.376 - .500	.575							5.00
	aBA - 6101 F	.501 - .625	.700							5.50
	aBA - 6121 F	.626 - .750	.825							6.00
	aBA - 6141 F	.751 - .875	.950							6.00
1/4"	aBA - 6161 F	.876 - 1.00	1.200	.750	1.07	.151	.257 - .261	460	560	6.50
	aBA - 881 F	.376 - .500	.750							

COUNTERSUNK



3/16"				.114		.076	.129 - .133 (#30)	120	150	1.10
										1.20
										1.30
3/16"				.095		.095	.160 - .164	190	230	1.88
	aCA - 66	.251 - .375	.575							2.80

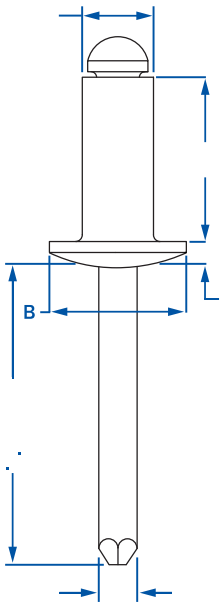


abs series • aluminum/steel rivets • OPEN END

RIVET: 5056 ALUMINUM • MANDREL: ZINC PLATED STEEL

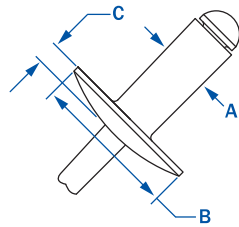
rivet king® aluminum/steel rivets offer greater rust protection than the industry standard. Instead of a phosphate mandrel, we zinc plate our mandrel for better rust protection during storage. The additional zinc coverage also delays the rust potential of applied rivets. Along with the zinc plated steel mandrel is the bright polished aluminum rivet that is also protected from oxidation. The ABS series is ranked #4 in shear and tensile strength in the standard open end rivet category.

STANDARD FLANGE-DOME HEAD



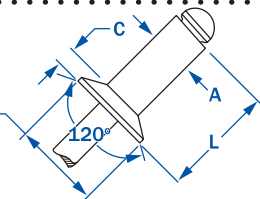
DIA.	PART NUMBER	GRIP RANGE	RIVET LENGTH	HEAD DIA.	HEAD HEIGHT	MANDREL DIA.	HOLE SIZE (DRILL #)	STRENGTH		Wt. lbs/M
								SHEAR	TENSILE	
3/32"	aBS - 32	.020 - .125	.250	.188	.032	.057	.097 - .100 (#41)	90	120	1.30
	aBS - 34	.126 - .250	.375							1.30
	aBS - 41	.020 - .062	.212							2.50
	aBS - 42	.063 - .125	.275							2.50
1/8"	aBS - 43	.126 - .187	.337	.250	.040	.076	.129 - .133 (#30)	170	220	2.60
	aBS - 44	.188 - .250	.400							2.70
	aBS - 45	.251 - .312	.462							2.70
	aBS - 46	.313 - .375	.525							2.80
	aBS - 48	.376 - .500	.650							3.10
	aBS - 410	.501 - .625	.775							3.10
	aBS - 412	.626 - .750	.900							
	aBS - 52	.020 - .125	.300							.312
aBS - 53	.126 - .187	.362	4.25							
aBS - 54	.188 - .250	.425	4.38							
aBS - 56	.251 - .375	.550	5.17							
3/16"	aBS - 58	.376 - .500	.675	.375	.060	.114	.192 - .196 (#11)	380	500	5.17
	aBS - 62	.020 - .125	.325							6.20
	aBS - 63	.126 - .187	.387							
	aBS - 64	.188 - .250	.450							7.00
	aBS - 66	.251 - .375	.575							7.20
	aBS - 68	.376 - .500	.700							7.75
	aBS - 610	.501 - .625	.825							8.75
	aBS - 612	.626 - .750	.950							9.00
	aBS - 614	.751 - .875	1.075							
	aBS - 616	.876 - 1.00	1.200							10.33
1/4"	aBS - 84	.020 - .250	.500	.500	.080	.151	.257 - .261 (F)	700	920	13.50
	aBS - 86	.251 - .375	.625							14.00
	aBS - 88	.376 - .500	.750							15.00
	aBS - 810	.501 - .625	.875							16.00
	aBS - 812	.626 - .750	1.000							16.00
	aBS - 814	.751 - .875	1.125							21.00
aBS - 816	.876 - 1.00	1.250	21.00							

LARGE FLANGE



1/8"	aBS - 421 F	.063 - .125	.275	.375	.065	.076	.129 - .133 (#30)	170	220	2.60
	aBS - 431 F	.126 - .187	.337							2.70
	aBS - 441 F	.188 - .250	.400							2.70
	aBS - 461 F	.313 - .375	.525							3.25
5/32"	aBS - 481 F	.376 - .500	.650	.468	.075	.095	.160 - .164 (#20)	260	350	5.00
	aBS - 521 F	.020 - .125	.300							
	aBS - 541 F	.188 - .250	.362							
	aBS - 561 F	.251 - .375	.425							
3/16"	aBS - 621 F	.020 - .125	.325	.625	.092	.114	.192 - .196 (#11)	380	500	8.00
	aBS - 641 F	.188 - .250	.387							9.00
	aBS - 661 F	.251 - .375	.450							9.33
	aBS - 681 F	.376 - .500	.575							10.50
	aBS - 6101 F	.501 - .625	.700							10.50
	aBS - 6121 F	.626 - .750	.825							11.50
1/4"	aBS - 6141 F	.751 - .875	.950	.750	1.07	.151	.257 - .261	1000	1240	12.00
	aBS - 6161 F	.876 - 1.00	1.200							

COUNTERSUNK



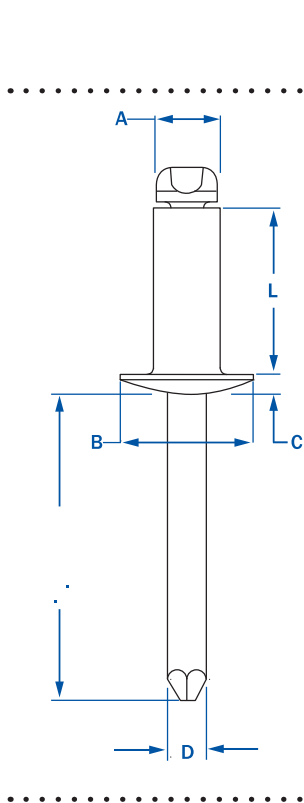
1/8"	aCS - 42	.063 - .125	.275	.220	.031	.076	.129 - .133 (#30)	170	220	2.60
	aCS - 43	.126 - .187	.337							2.70
	aCS - 44	.188 - .250	.400							2.70
5/32"	aCS - 54	.188 - .250	.425	.281	.040	.095	.160 - .164	260	350	4.13
3/16"	aCS - 64	.188 - .250	.450	.350	.050	.114	.192 - .196 (#11)	380	500	6.40
	aCS - 66	.251 - .375	.575							7.40



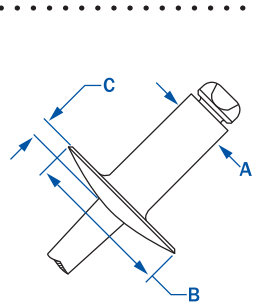
SBS series • all steel blind rivets • OPEN END

RIVET: STEEL ZINC PLATED • MANDREL: STEEL ZINC PLATED

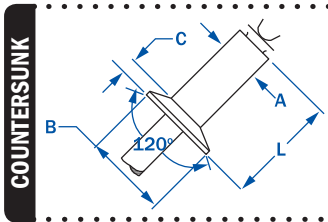
Outperforming its predecessors, the rivetking® steel/steel rivets are revolutionary. The “pitched” mandrel design offers superior performance when operating in overgrip or undergrip conditions. This design insures that the mandrel head is enveloped by the rivet and helps prevent mandrel rattle/fallout during the life of the assembly. The rivet and mandrel are zinc plated and offer increased resistance to rust. Of the standard open end blind rivets, the SBS series is 3rd strongest in both shear and tensile strength.



a	PART NUMBER	GRIP RANGE	RIVET LENGTH	HEAD DIA.	HEAD HEIGHT	MANDREL DIA.	HOLE SIZE (DRILL #)	STRENGTH		Wt. lbs/M
								SHEAR	TENSILE	
3/32"	sBS - 32	.020 - .125	.250	.188	.032	.057	.097 - .100 (#41)	130	170	1.50
	sBS - 34	.126 - .250	.375							1.70
	sBS - 41	.020 - .062	.212							2.80
	sBS - 42	.063 - .125	.275							2.90
	sBS - 43	.126 - .187	.337							3.10
	sBS - 44	.188 - .250	.400							3.30
	sBS - 45	.251 - .312	.462	.250	.040	.076	.129 - .133 (#30)	260	310	3.60
	sBS - 46	.313 - .375	.525							3.70
	sBS - 48	.376 - .500	.650							3.70
	sBS - 410	.501 - .625	.775							4.78
	sBS - 412	.626 - .750	.900							
	5/32"	sBS - 52	.020 - .125	.300						
sBS - 53		.126 - .187	.362							5.25
sBS - 54		.188 - .250	.425	.312	.050	.095	.160 - .164 (#20)	370	470	5.50
sBS - 56		.251 - .375	.550							6.67
sBS - 58		.376 - .500	.675							6.83
3/16"	sBS - 62	.020 - .125	.325							7.80
	sBS - 63	.126 - .187	.387							8.20
	sBS - 64	.188 - .250	.450							8.60
	sBS - 66	.251 - .375	.575							9.40
	sBS - 68	.376 - .500	.700	.375	.060	.114	.192 - .196 (#11)	540	680	10.75
	sBS - 610	.501 - .625	.825							11.75
	sBS - 612	.626 - .750	.950							11.75
	sBS - 614	.751 - .875	1.075							14.33
	sBS - 616	.876 - 1.00	1.200							14.67
	sBS - 84	.020 - .250	.500							16.50
1/4"	sBS - 86	.251 - .375	.625							17.50
	sBS - 88	.376 - .500	.750							19.00
	sBS - 810	.501 - .625	.875	.500	.080	.151	.257 - .261 (F)	1000	1240	23.00
	sBS - 812	.626 - .750	1.000							24.50
	sBS - 814	.751 - .875	1.125							27.00
	sBS - 816	.876 - 1.00	1.250							28.00



1/8"	sBS - 42I F	.063 - .125	.275							3.30
	sBS - 43I F	.126 - .187	.337							3.50
	sBS - 44I F	.188 - .250	.400	.375	.065	.076	.129 - .133 (#30)	260	310	3.60
	sBS - 46I F	.313 - .375	.525							4.63
	sBS - 48I F	.376 - .500	.650							4.63
5/32"	sBS - 52I F	.020 - .125	.300							7.50
	sBS - 54I F	.188 - .250	.362	.468	.075	.095	.160 - .164 (#20)	370	470	8.33
	sBS - 56I F	.251 - .375	.425							
3/16"	sBS - 62I F	.020 - .125	.325							12.67
	sBS - 64I F	.188 - .250	.387							13.33
	sBS - 66I F	.251 - .375	.450							14.67
	sBS - 68I F	.376 - .500	.575	.625	.092	.114	.192 - .196 (#11)	540	680	16.00
	sBS - 610I F	.501 - .625	.700							16.00
	sBS - 612I F	.626 - .750	.825							16.00
	sBS - 614I F	.751 - .875	.950							17.00
sBS - 616I F	.876 - 1.00	1.200							18.00	
1/4"	sBS - 88I F	.376 - .500	.750	.750	1.07	.151	.257 - .261	1000	1240	



		.063 - .125	.275							3.00
5/32"	sCS - 54	.188 - .250	.425	.281	.040	.095	.160 - .164	370	470	5.25
3/16"	sCS - 64	.188 - .250	.450	.350	.050	.114	.192 - .196 (#11)	540	680	8.20
	sCS - 66	.251 - .375	.575							9.60

COUNTERSUNK

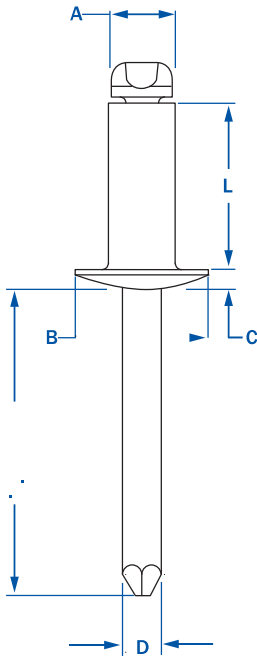


FBS SERIES • all stainless rivets • OPEN END

RIVET: 18-8 SERIES STAINLESS STEEL • MANDREL: STEEL ZINC PLATED

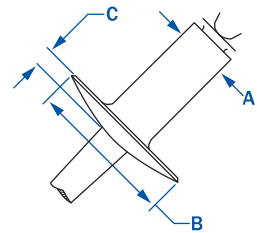
Industrial rivet stainless steel/steel blind rivets are an economical alternative to all stainless steel rivets offering similar corrosion resistance, shear strength and tensile strengths. These rivets meet or exceed IFI 114, Grade 50 specifications. The rivet body is stainless steel alloy and the mandrel is steel and zinc plated with a clear chromate coating.

STANDARD FLANGE-DOME HEAD

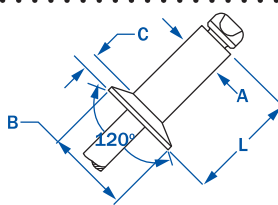


a	PART NUMBER	GRIP RANGE	RIVET LENGTH	HEAD DIA.	HEAD HEIGHT	MANDREL DIA.	HOLE SIZE (DRILL #)	STRENGTH		Wt. lbs/M
								SHEAR	TENSILE	
3/32"	FBS - 32	.020 - .125	.250	.188	.032	.057	.097 - .100 (#41)	230	280	
	FBS - 34	.126 - .250	.375							
	FBS - 41	.020 - .062	.212							
1/8"	FBS - 42	.063 - .125	.275	.250	.040	.076	.129 - .133 (#30)	420	530	2.60
	FBS - 43	.126 - .187	.337							3.00
	FBS - 44	.188 - .250	.400							3.10
	FBS - 45	.251 - .312	.462							3.20
	FBS - 46	.313 - .375	.525							3.60
	FBS - 48	.376 - .500	.650							3.50
5/32"	FBS - 52	.020 - .125	.300	.312	.050	.095	.160 - .164 (#20)	650	820	3.60
	FBS - 53	.126 - .187	.362							5.00
	FBS - 54	.188 - .250	.425							5.25
	FBS - 56	.251 - .375	.550							5.80
	FBS - 58	.376 - .500	.675							
3/16"	FBS - 510	.501 - .625	.800	.375	.060	.114	.192 - .196 (#11)	950	1200	7.40
	FBS - 62	.063 - .125	.325							8.40
	FBS - 63	.126 - .187	.387							8.80
	FBS - 64	.188 - .250	.450							9.75
	FBS - 66	.251 - .375	.575							11.00
	FBS - 68	.376 - .500	.700							11.75
	FBS - 610	.501 - .625	.825							
	FBS - 612	.626 - .750	.950							
	FBS - 614	.751 - .875	1.075							
	FBS - 616	.876 - 1.000	1.200							22.00
1/4"	FBS - 84	.063 - .250	.500	.500	.080	.151	.257 - .261 (F)	1700	2100	
	FBS - 86	.251 - .375	.625							
	FBS - 88	.376 - .500	.750							
	FBS - 810	.501 - .625	.875							
	FBS - 812	.626 - .750	1.000							

LARGE FLANGE



1/8"	FBS - 42I F	.020 - .125	.275	.375	.065	.076	.129 - .133 (#30)	420	530	3.30
	FBS - 43I F	.126 - .187	.337							3.50
	FBS - 44I F	.188 - .250	.375							3.60
	FBS - 45I F	.251 - .312	.462							
	FBS - 46I F	.313 - .375	.525							
5/32"	FBS - 52I F	.020 - .125	.300	.468	.075	.095	.160 - .164 (#20)	650	820	
	FBS - 53I F	.126 - .187	.362							
	FBS - 54I F	.188 - .250	.425							
	FBS - 56I F	.251 - .375	.550							
3/16"	FBS - 58I F	.376 - .500	.675	.625	.092	.114	.192 - .196 (#11)	950	1200	
	FBS - 62I F	.063 - .187	.375							10.67
	FBS - 64I F	.188 - .250	.450							11.33
	FBS - 66I F	.251 - .375	.575							11.67
	FBS - 68I F	.376 - .500	.700							13.00
	FBS - 610I F	.501 - .625	.825							14.50



1/8"	FBS - 42	.063 - .125	.275	.220	.031	.076	.129 - .133 (#30)	420	530	3.00
	FBS - 43	.126 - .187	.337							3.10
	FBS - 44	.188 - .250	.400							3.30
3/16"	FBS - 54		.425	.350	.050	.114	.192 - .196 (#11)	950	1200	7.60
	FBS - 66	.251 - .375	.575							9.79

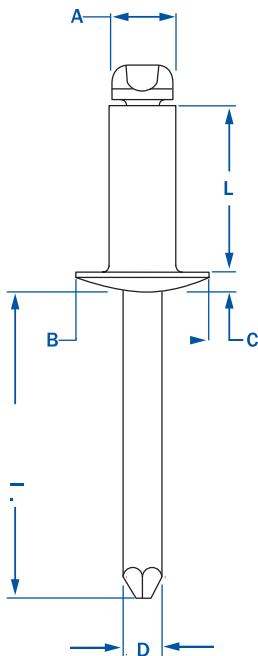


RIVET: 18-8 STAINLESS STEEL • MANDREL: 18-8 STAINLESS STEEL

rivetking® all stainless steel blind rivets are a sure way to avoid rust and oxidation. Produced from the finest grade stainless steel materials and clean polished, the FBF series will look great and last a lifetime in the finished assembly. The mandrels are blunt diamond pointed to insure increased assembly speed and improving safety. The unique mandrel head shape assists in retaining the mandrel within the rivet. All Stainless Blind rivets rank #1 in shear and tensile strength when compared to others in its class.

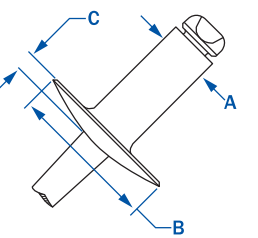


STANDARD FLANGE-DOME HEAD



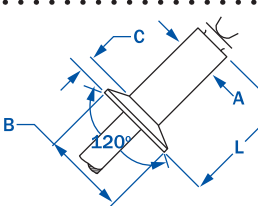
a	PART NUMBER	GRIP RANGE	RIVET LENGTH	I HEAD DIA.	B HEAD HEIGHT	C MANDREL DIA.	MANDREL HOLE SIZE (DRILL #)	STRENGTH									
								SHEAR	TENSILE								
3/32"	FBF - 32	.020 - .125	.250	.188	.032	.057	.097 - .100 (#41)	230	280	1.53							
	FBF - 34	.126 - .250	.375							1.73							
	FBF - 41	.020 - .062	.212							2.60							
	FBF - 42	.063 - .125	.275							2.90							
	FBF - 43	.126 - .187	.337							3.00							
	FBF - 44	.188 - .250	.400							3.10							
	FBF - 45	.251 - .312	.462							3.60							
	FBF - 46	.313 - .375	.525							3.30							
	FBF - 48	.376 - .500	.650							3.50							
	FBF - 410	.501 - .625	.775							4.88							
	FBF - 412	.626 - .750	.900														
	1/8"	FBF - 52	.020 - .125							.300	.250	.040	.076	.129 - .133 (#30)	420	530	5.00
FBF - 53		.126 - .187	.362	5.13													
FBF - 54		.188 - .250	.425	5.25													
FBF - 56		.251 - .375	.550	5.83													
FBF - 58		.376 - .500	.675	6.50													
FBF - 62		.020 - .125	.325	7.40													
5/32"	FBF - 63	.126 - .187	.387	.312	.050	.095	.160 - .164 (#20)	650	820	8.36							
	FBF - 64	.188 - .250	.450							8.40							
	FBF - 66	.251 - .375	.575							8.80							
	FBF - 68	.376 - .500	.700							9.75							
	FBF - 610	.501 - .625	.825							11.00							
	FBF - 612	.626 - .750	.950							11.75							
	FBF - 614	.751 - .875	1.075							14.62							
	FBF - 616	.876 - 1.00	1.200							22.00							
	3/16"	FBF - 84	.020 - .250							.500	.375	.060	.114	.192 - .196 (#11)	950	1200	15.00
		FBF - 86	.251 - .375							.625							17.00
FBF - 88		.376 - .500	.750	18.00													
FBF - 810		.501 - .625	.875	20.00													
FBF - 812		.626 - .750	1.000	20.50													
FBF - 814		.751 - .875	1.125	27.54													
FBF - 816		.876 - 1.00	1.250	28.56													
1/4"		FBF - 84	.020 - .250	.500	.500	.080	.151	.257 - .261 (F)	1700	2100							15.00
		FBF - 86	.251 - .375	.625													17.00
		FBF - 88	.376 - .500	.750													18.00
	FBF - 810	.501 - .625	.875	20.00													
	FBF - 812	.626 - .750	1.000	20.50													
	FBF - 814	.751 - .875	1.125	27.54													

LARGE FLANGE



1/8"	FBF - 42I F	.063 - .125	.275	.375	.065	.076	.129 - .133 (#30)	420	530	3.30
	FBF - 43I F	.126 - .187	.337							3.50
	FBF - 44I F	.188 - .250	.400							3.60
	FBF - 46I F	.313 - .375	.525							4.72
	FBF - 48I F	.376 - .500	.650							4.72
	FBF - 52I F	.020 - .125	.300							
5/32"	FBF - 54I F	.188 - .250	.362	.468	.075	.095	.160 - .164 (#20)	650	820	
	FBF - 56I F	.251 - .375	.425							
	FBF - 62I F	.020 - .125	.325							
	FBF - 64I F	.188 - .250	.387							
	FBF - 66I F	.251 - .375	.450							10.67
	FBF - 68I F	.376 - .500	.575							11.33
3/16"	FBF - 610I F	.501 - .625	.700	.625	.092	.114	.192 - .196 (#11)	950	1200	11.67
	FBF - 612I F	.626 - .750	.825							13.00
	FBF - 614I F	.751 - .875	.950							14.50
	FBF - 616I F	.876 - 1.00	1.200							17.34
	FBF - 616I F	.876 - 1.00	1.200							18.36
	FBF - 88I F	.376 - .500	.750							.750

COUNTERSUNK



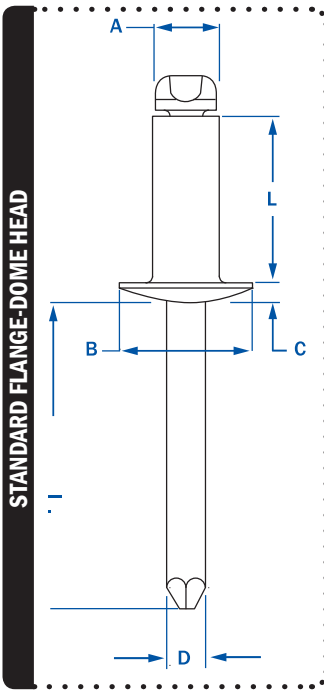
1/8"	FCF - 42	.063 - .125	.275	.220	.031	.076	.129 - .133 (#30)	420	530	3.00
	FCF - 43	.126 - .187	.337							3.10
	FCF - 44	.188 - .250	.400							3.30
5/32"	FCF - 54	.188 - .250	.425	.281	.040	.095	.160 - .164	650	820	5.36
3/16"	FCF - 64	.188 - .250	.450	.350	.050	.114	.192 - .196 (#11)	950	1200	7.60
	FCF - 66	.251 - .375	.575							9.79



COPPER BLIND RIVETS

CBS SERIES ° RIVET: COPPER • MANDREL: STEEL

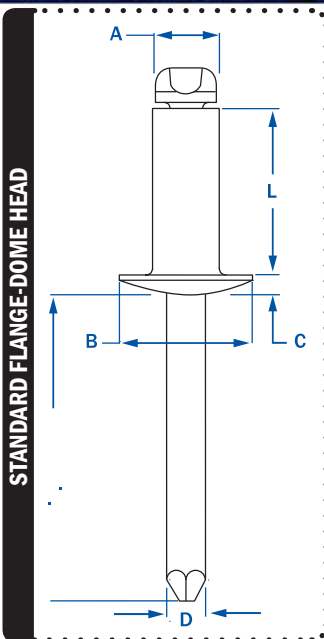
rivetking® offers copper rivet bodies with either a solid brass mandrel or a steel mandrel. The solid brass mandrel configuration is used in electronics applications where superior conductivity is required or in decorative applications where superior corrosion protection is required. The steel mandrel configuration is best for gutter or roofing applications or in electronic or decorative applications where cost is of concern. Both CBS and CBB series rivets meet or exceed IFI 114 specifications.



DIA.	PART NUMBER	GRIP RANGE	HOLE SIZE (DRILL #)	RIVET LENGTH	HEAD DIA.	HEAD HEIGHT	MANDREL DIA.	STRENGTH		Weight Per M
								SHEAR	TENSILE	
1/8"	CBS - 42	.020 - .125	.097 - .100 (#41)	.250	.188	.032	.057	215	300	3.1
	CBS - 43	.126 - .250		.375						3.4
	CBS - 44	.020 - .062	.129 - .133 (#30)	.212	.250	.040	.076			3.4



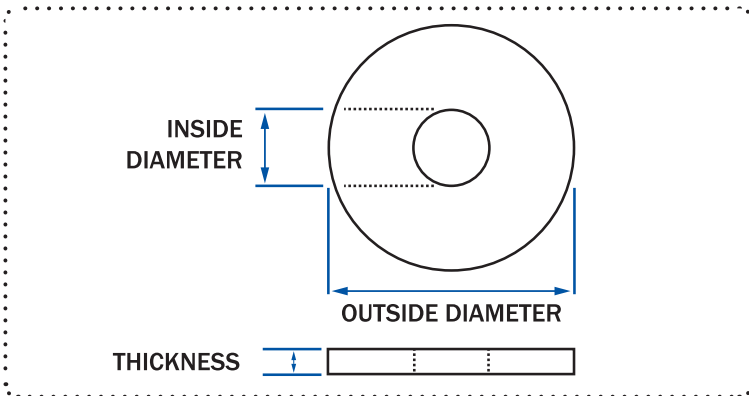
CBB SERIES ° RIVET: COPPER • MANDREL: BRASS



DIA.	PART NUMBER	GRIP RANGE	HOLE SIZE (DRILL #)	RIVET LENGTH	HEAD DIA.	HEAD HEIGHT	MANDREL DIA.	STRENGTH		Weight Per M
								SHEAR	TENSILE	
1/8"	CBS - 42	.020 - .125	.097 - .100 (#41)	.250	.188	.032	.057	215	300	3.1
	CBS - 43	.126 - .250		.375						3.4
	CBS - 44	.020 - .062	.129 - .133 (#30)	.212	.250	.040	.076			3.4



back u P washers



use BaCK up was HeRs tO insu Re tHe pROpeR HOle dia MeteR. BaCK up was HeRs als O pROvide an ex Cellent BeaRinG su RFAce.

DIMENSIONS				ALUMINUM	Steel Zinc Plated	STAINLESS Steel 18-8 series
RIVET DIA.	INSIDE DIA.	OUTSIDE DIA.	THICKNESS	PART NUMBER	PART NUMBER	PART NUMBER
1/8"	.125	.375	.062	aBUP - 4	sBUP - 4	st BUP - 4
5/32"	.156	.437	.062	aBUP - 5	sBUP - 5	st BUP - 5
3/16"	.187	.500	.062	aBUP - 6	sBUP - 6	st BUP - 6
1/4"	.250	.625	.062	aBUP - 8	sBUP - 8	st BUP - 8

FIND THIS & OTHER GREAT TOOLS ON PAGES 3-6

RK SERIES · RIVETKING® TOOLS

built with quality and economy in mind, the r k series riveters have enough force to pull any rivet. perfect for diy market and for situations where abuse or theft is of concern. the RK-187-e is an ergonomic and lightweight model that has vacuum Mandrel collection and is a break-away from the traditional design.

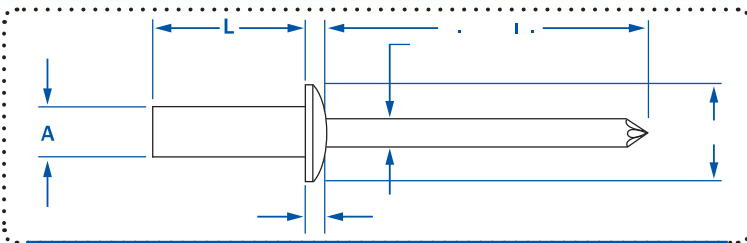


RK-187 3/16" MAX. **RK-250** 1/4" MAX. & STRUCTURALS **RK-187-E** ERGONOMIC MODEL **RK-INLINE** 3/16" MAX.



aba-ce series • all aluminum rivets • CLOSED END

ALL ALUMINUM-DOME HEAD • CLOSED END BLIND RIVET



Closed end Rivets are used when a weather proof/leak proof seal is needed. its completely closed end design prevents liquids, moisture, air and other contaminants from entering the riveted hole and/or the rivet itself. the RivetKing® Closed end rivet design guarantees the mandrel head is fully retained within the rivet. RivetKing® aluminum/aluminum Closed end rivets are bright polished for aesthetics and to prevent oxidation. the aluminum Rivet / aluminum Mandrel configuration is corrosion resistant.

rivet : dome Head, Polis Hed, 1100 alu Minu M
Mandrel: Polis Hed, alu Minu M
ifi -126 grade 9

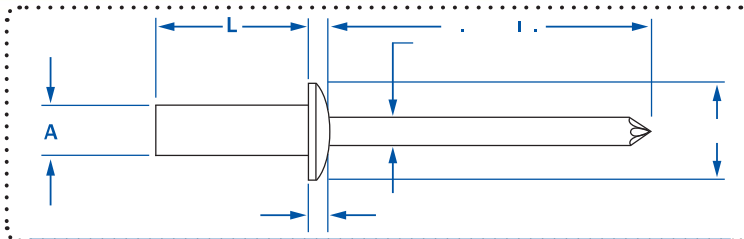


PART NUMBER	RIVET SIZE	GRIP RANGE		LENGTH	HEAD DIA	HEAD HEIGHT	MANDREL DIA	HOLE SIZE	SHEAR	TENSILE	WEIGHT /M
		MIN - MAX	MAX	NOM.	NOM.	NOM.	MIN - MAX	LBS.F	LBS.F	LBS/M	
aBA - 32 - Ce	3/32"	.020 - .125			.188	.032	.057	.097 - .100 (#41)	n/a	n/a	0.8
aBA - 34 - Ce		.126 - .250									0.9
aBA - 41 - Ce	1/8"	.020 - .062	.297		.250	.040	.076	.129 - .133 (#30)	130	110	1.2
aBA - 42 - Ce		.063 - .125	.360								1.3
aBA - 43 - Ce		.126 - .187	.422								1.3
aBA - 44 - Ce		.188 - .250	.485								1.4
aBA - 45 - Ce		.251 - .312	.547								1.5
aBA - 46 - Ce		.313 - .375	.610								1.6
aBA - 48 - Ce		.376 - .500	.735								1.7
aBA - 410 - Ce		.501 - .625									1.8
aBA - 412 - Ce		.626 - .750									1.9
aBA - 52 - Ce		5/32"	.020 - .125	.375							
aBA - 53 - Ce	.126 - .187		.437		2.0						
aBA - 54 - Ce	.188 - .250		.500		2.1						
aBA - 55 - Ce	.251 - .312		.562		2.2						
aBA - 56 - Ce	.313 - .375		.625		2.2						
aBA - 58 - Ce	.376 - .500		.750		2.3						
aBA - 510 - Ce	.501 - .625				2.4						
aBA - 62 - Ce	.020 - .125		.406		.375	.060	.114	.192 - .196 (#11)	210	250	2.8
aBA - 63 - Ce	.126 - .187	.468		3.2							
aBA - 64 - Ce	.188 - .250	.531		3.4							
aBA - 66 - Ce	.251 - .375	.656		4.0							
aBA - 68 - Ce	.376 - .500	.781		4.4							
aBA - 610 - Ce	.501 - .625	.906		4.9							
aBA - 612 - Ce	.626 - .750	1.026		5.5							
aBA - 614 - Ce	.751 - .875			6.1							
aBA - 616 - Ce	.876 - 1.000			6.8							
aBA - 82 - Ce	1/4"	.020 - .125	.445								.500
aBA - 84 - Ce		.125 - .250	.570								
aBA - 86 - Ce		.251 - .375	.695								
aBA - 88 - Ce		.376 - .500	.820								
aBA - 810 - Ce		.501 - .625	.945								
aBA - 812 - Ce		.626 - .750	1.070								
aBA - 814 - Ce		.751 - .875	1.195								
aBA - 816 - Ce		.876 - 1.000	1.320								



abs-ce series • aluminum/ steel • closed end

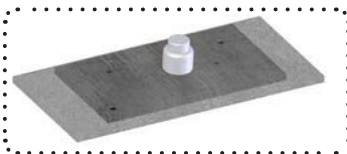
ALUMINUM/STEEL-DOME HEAD • CLOSED END BLIND RIVETS



Closed end Rivets are used when a weather proof / leak proof seal is needed. its completely closed end design prevents liquids, moisture, air and other contaminants from entering the riveted hole and/or the rivet itself. the RivetKing® Closed end rivet design guarantees the mandrel head is fully retained within the rivet. aluminum/steel Closed end rivets have an aluminum bright polished rivet to resist oxidation and a steel phosphate coated mandrel for improved clamp force during riveting. while the aBS-CE series is an aluminum rivet, be aware that the mandrel is steel and even though withdrawn after riveting, the potential for rust streaks is present. For superior corrosion protection use aBa-Ce or FBF-Ce.

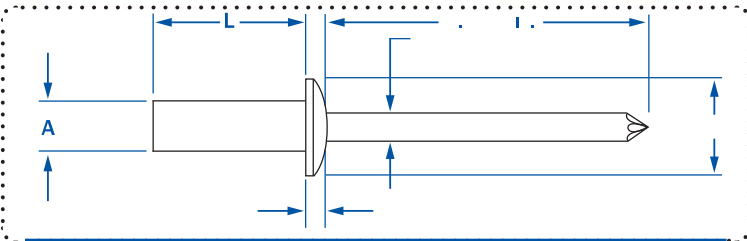
rivet : dome Head, Polished, 5056 aluminum M
Mandrel : Phosphate, steel
per ANSI -126 grade 19

PART NUMBER	RIVET SIZE	GRIP RANGE	LENGTH	HEAD DIA	HEAD HEIGHT	MANDREL DIA	HOLE SIZE	SHEAR	TENSILE	WEIGHT
		MIN - MAX	MAX	NOM.	NOM.	NOM.	MIN - MAX	LBS.F	LBS.F	LBS/M APPROX.
aBS - 32 - Ce	3/32"	.020 - .125		.188	.032	.057	.097 - .100 (#41)	n/a	n/a	2.0
aBS - 34 - Ce		.126 - .250								2.0
aBS - 41 - Ce	1/8"	.020 - .063	.297	.250	.040	.076	.129 - .133 (#30)	240	280	2.1
aBS - 42 - Ce		.063 - .125	.360							2.2
aBS - 43 - Ce		.126 - .187	.422							2.2
aBS - 44 - Ce		.188 - .250	.485							2.5
aBS - 45 - Ce		.251 - .312	.547							2.6
aBS - 46 - Ce		.313 - .375	.610							2.6
aBS - 48 - Ce		.376 - .500	.735							2.7
aBS - 410 - Ce		.501 - .625								2.8
aBS - 412 - Ce		.626 - .750								2.9
aBS - 52 - Ce		5/32"	.020 - .125							.375
aBS - 53 - Ce	.126 - .187		.437	3.9						
aBS - 54 - Ce	.188 - .250		.500	3.9						
aBS - 55 - Ce	.251 - .312		.562	4.0						
aBS - 56 - Ce	.313 - .375		.625	4.0						
aBS - 58 - Ce	.376 - .500		.750	4.1						
aBS - 510 - Ce	.501 - .625			4.3						
aBS - 62 - Ce	3/16"	.020 - .125	.406	.375	.060	.114	.192 - .196 (#11)	500	690	5.4
aBS - 63 - Ce		.126 - .187	.468							5.8
aBS - 64 - Ce		.188 - .250	.531							6.2
aBS - 66 - Ce		.251 - .375	.656							6.4
aBS - 68 - Ce		.376 - .500	.781							7.0
aBS - 610 - Ce		.501 - .625	.906							7.3
aBS - 612 - Ce		.626 - .750	1.026							7.5
aBS - 614 - Ce		.751 - .875								8.0
aBS - 616 - Ce	.876 - 1.000		8.5							
aBS - 82 - Ce	1/4"	.020 - .125	.445	.500	.080	.151	.257 - .261 (F)	900	1100	11.3
aBS - 84 - Ce		.125 - .250	.570							11.5
aBS - 86 - Ce		.251 - .375	.695							11.5
aBS - 88 - Ce		.376 - .500	.820							12.5
aBS - 810 - Ce		.501 - .625	.945							13.5
aBS - 812 - Ce		.626 - .750	1.070							14.5
aBS - 814 - Ce		.751 - .875	1.195							15.5
aBS - 816 - Ce		.876 - 1.000	1.320							16.5



fbf - CE SERIES • all stainless • closed end

CLOSED END • RIVET: 18-8 STAINLESS • MANDREL: STAINLESS



Closed end Rivets are used when a weather proof / leak proof seal is needed. Its completely closed end design prevents liquids, moisture, air and other contaminants from entering the riveted hole and/or the rivet itself. The RivetKing® Closed end rivet design guarantees the mandrel head is fully retained within the rivet. stainless/stainless Closed end rivets are bright polished and contain a grooved mandrel which improves jaw life and maintains positive stroke of the riveter. The All-Stainless configuration is corrosion resistant.

Rivet: D0me HeAD, POI SHed, 300 SeRIeS STAIInle SS STeel
 Mandrel : Polis Hed, 400 series stainless steel
 per ifi -126 grade 30

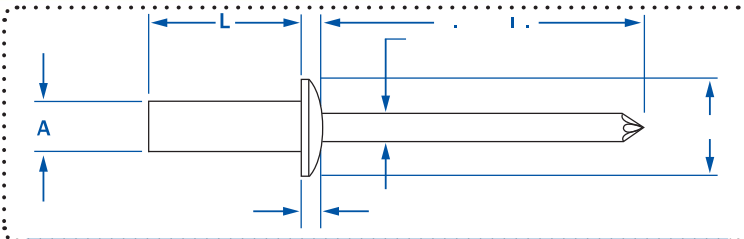


PART NUMBER	RIVET SIZE	GRIP RANGE		LENGTH	HEAD DIA	HEAD HEIGHT	MANDREL DIA	HOLE SIZE	SHEAR	TENSILE
		MIN - MAX	MAX	NOM.	NOM.	NOM.	MIN - MAX	LBS.F	LBS.F	
FBF - 32 - Ce	3/32"	.020 - .125	.250	.188	.032	.057	.097 - .100 (#41)	n/a	n/a	
FBF - 34 - Ce		.126 - .250	.375							
FBF - 42 - Ce	1/8"	.063 - .125	.360	.250	.040	.076	.129 - .133 (#30)	441	551	
FBF - 43 - CE		.126 - .187	.422							
FBF - 44 - CE		.188 - .250	.485							
FBF - 45 - CE		.251 - .312	.547							
FBF - 46 - CE		.313 - .375	.610							
FBF - 48 - CE		.376 - .500	.735							
FBF - 52 - CE		.020 - .125	.375							.312
FBF - 53 - CE	.126 - .187	.437								
FBF - 54 - CE	.188 - .250	.500								
FBF - 56 - CE	.251 - .375	.562								
FBF - 58 - CE	.376 - .500	.625								
FBF - 510 - CE	.501 - .625	.750								
FBF - 62 - Ce	3/16"	.020 - .125	.406	.375	.060	.114	.192 - .196 (#11)	991	1210	
FBF - 63 - Ce		.126 - .187	.468							
FBF - 64 - Ce		.188 - .250	.531							
FBF - 66 - Ce		.251 - .375	.656							
FBF - 68 - Ce		.376 - .500	.781							
FBF - 610 - Ce		.501 - .625	.906							
FBF - 612 - Ce		.626 - .750	1.026							
FBF - 82 - Ce	1/4"	.020 - .125	.445	.500	.080	.151	.257 - .261 (F)	1529	1955	
FBF - 84 - Ce		.125 - .250	.570							
FBF - 86 - Ce		.251 - .375	.695							
FBF - 88 - Ce		.376 - .500	.820							
FBF - 810 - Ce		.501 - .625	.945							
FBF - 812 - Ce		.626 - .750	1.070							
FBF - 814 - Ce		.751 - .875	1.195							
FBF - 816 - Ce	.876 - 1.000	1.320								



sbs-ce series • all steel • closed end

ALL STEEL • DOME HEAD • CLOSED END BLIND RIVETS



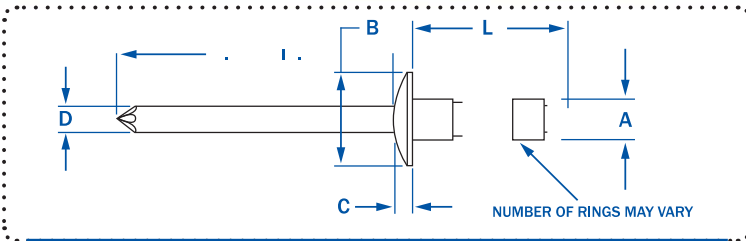
Closed end Rivets are used when a weather proof / leak proof seal is needed. its completely closed end design prevents liquids, moisture, air and other contaminants from entering the riveted hole and/or the rivet itself. the RivetKing® Closed end Rivet design guarantees the mandrel head is fully retained within the rivet. steel/steel Closed End rivets are zinc plated. for superior corrosion protection use aba-ce or fbf-ce.

rivet : dome Head, Zinc Plated, c 1002 steel
Mandrel : Zinc Plated, steel
per ffl -126 grade 30

PART NUMBER	RIVET SIZE	GRIP RANGE	LENGTH	HEAD DIA	HEAD HEIGHT	MANDREL DIA	HOLE SIZE	SHEAR	TENSILE						
		MIN - MAX	MAX	NOM.	NOM.	NOM.	MIN - MAX	LBS.F	LBS.F						
sBS - 32 - Ce	3/32"	.020 - .125	.250	.188	.032	.057	.097 - .100 (#41)	n/a	n/a						
sBS - 34 - Ce		.126 - .250	.375												
sBS - 42 - Ce	1/8"	.063 - .125	.360												
sBS - 43 - CE		.126 - .187	.422												
sBS - 44 - CE		.188 - .250	.485												
sBS - 45 - CE		.251 - .312	.547												
sBS - 46 - CE		.313 - .375	.610												
sBS - 48 - CE		.376 - .500	.735												
sBS - 52 - CE		5/32"	.020 - .125							.375					
sBS - 53 - CE			.126 - .187							.437					
sBS - 54 - CE	.188 - .250		.500												
sBS - 56 - CE	.251 - .375		.562												
sBS - 58 - CE	.376 - .500		.625												
sBS - 510 - CE	.501 - .625		.750												
sBS - 62 - Ce	3/16"	.020 - .125	.406							.312	.050	.095	.160 - .164 (#20)	389	418
sBS - 63 - Ce		.126 - .187	.468												
sBS - 64 - Ce		.188 - .250	.531												
sBS - 66 - Ce		.251 - .375	.656												
sBS - 68 - Ce		.376 - .500	.781												
sBS - 610 - Ce		.501 - .625	.906												
sBS - 612 - Ce		.626 - .750	1.026												
sBS - 82 - Ce		1/4"	.020 - .125	.445	.375	.060	.114	.192 - .196 (#11)	991						
sBS - 84 - Ce	.125 - .250		.570												
sBS - 86 - Ce	.251 - .375		.695												
sBS - 88 - Ce	.376 - .500		.820												
sBS - 810 - Ce	.501 - .625		.945												
sBS - 812 - Ce	.626 - .750		1.070												
sBS - 814 - Ce	.751 - .875		1.195												
sBS - 816 - Ce	.876 - 1.000		1.320												



ALUMINUM/STEEL MULTIGRIP "RING STYLE"



The benefit of a Multigrip is that they offer a wider grip range than traditional blind rivets assisting the users in inventory reduction and part consolidation efforts. The Rt™ series has aesthetic appeal to the backside of the assembly. It is produced and when applicable on steel, trivalent zinc plated for ROHs and GMw 3044 compliance.

Rivet: aluminum
Mandrel: steel, trivalent zinc plated

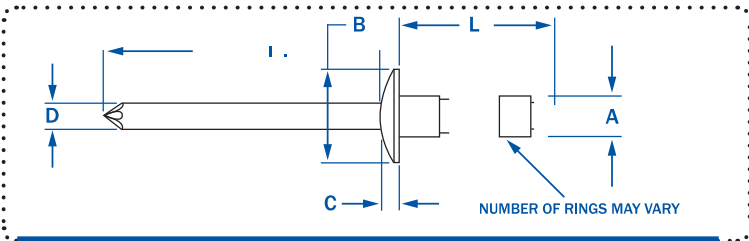


HEAD STYLE	PART NUMBER	RIVET SIZE	GRIP RANGE		LENGTH	HEAD DIA	HEAD HEIGHT	MANDREL DIA	HOLE SIZE	SHEAR	TENSILE					
			MIN. - MAX.	MAX.	NOM.	NOM.	NOM.	MIN. - MAX.	LBS.F	LBS.F						
dOME Head	aBS - 41 - 42MGRt	1/8"	.020 - .125	.313	.250	.043	.075	.129 - .133 (#30)	122	176						
	aBS - 41 - 43MGRt		.039 - .187	.389												
	aBS - 43 - 44MGRt		.156 - .250	.500												
	aBS - 43 - 45MGRt		.196 - .330	.586												
	aBS - 45 - 47MGRt		.236 - .445	.704												
	aBS - 51 - 53MGRt	5/32"	.032 - .157	.393	.312	.051	.088	.160 - .164 (#20)	198	354						
	aBS - 52 - 54MGRt		.047 - .276	.512												
	aBS - 53 - 55MGRt		.156 - .354	.590												
	aBS - 54 - 58MGRt		.276 - .472	.708												
	aBS - 62 - 64MGRt	3/16"	.062 - .250	.519	.375	.062	.114	.192 - .196 (#11)	331	486						
	aBS - 63 - 67MGRt		.187 - .456	.716												
	aBS - 66 - 69MGRt		.275 - .598	.875												
	aBS - 66 - 610MGRt		.393 - .670	.952												
	aBS - 610 - 612MGRt		.500 - .787	1.070												
	aBS - 82 - 84MG	1/4"	.062 - .250	.472	.511	.070	.141	.257 - .261 (F)	630	900						
aBS - 84 - 86MG	.156 - .375		.590													
aBS - 86 - 88MG	.250 - .750		.708													
I aRGe Flan Ge	aBS - 41 - 43I FMGRt	1/8"	.020 - .125	.313	.250	.043	.075	.129 - .133 (#30)	122	176						
	aBS - 43 - 44I FMGRt		.156 - .250	.500												
	aBS - 52 - 54I FMGRt	5/32"	.047 - .276	.512							.312	.051	.088	.160 - .164 (#20)	198	354
	aBS - 62 - 64I FMGRt	3/16"	.062 - .250	.519												
	aBS - 63 - 67I FMGRt		.187 - .456	.716												
aBS - 66 - 69I FMGRt	.275 - .598		.875													
C'sun K	aCS - 43 - 44MGRt	1/8"	.093 - .250	.383	.345	.051	.108	.129 - .138	165	230						
	aCS - 53 - 55MGRt	5/32"	.110 - .312	.470												
	aCS - 62 - 65MGRt	3/16"	.062 - .312	.500												
	aCS - 66 - 68MGRt		.250 - .500	.690												



aba-Rt™ Series • "ring style" • MULTIGRIP-Rt™

ALUMINUM/ALUMINUM MULTIGRIP "RING STYLE"



The benefit of a Multigrip™ is that they offer a wider grip range than traditional blind rivets assisting the users in inventory reduction and part consolidation efforts. The Rt series has aesthetic appeal to the backside of the assembly. It is produced and when applicable on steel, trivalent zinc plated for ROHs and GMw 304t4 compliance.

Rivet: alu Minu M
Mandrel: alu Minu M all oy

HEAD STYLE	PART NUMBER	RIVET SIZE	GRIP RANGE	LENGTH	HEAD DIA	HEAD HEIGHT	MANDREL DIA	HOLE SIZE	SHEAR	TENSILE
			MIN - MAX	NOM.	MAX.	MAX.	NOM.	MIN - MAX	LBS.F	LBS.F
dOMe Head	aBa41 - 43MGRT	1/8"	.039 - .187	.313	.262	.040	.076	.129 - .142 (#30)	65	85
	aBa43 - 45MGRT		.157 - .312	.573						
	aBa45 - 47MGRT		.251 - .437	.594						
	aBa62 - 64MGRT	3/16"	.063 - .250	.425	.390	.055	.114	.192 - .205 (#11)	145	205
	aBa63 - 66MGRT		.188 - .375	.605						
	aBa66 - 68MGRT		.251 - .500	.716						
	aBa68 - 612MGRT		.438 - .750	1.050						
l aRGe Flan Ge	aBa41 - 43I FMGRt	1/8"	.039 - .187	.313	.390	.052	.076	.129 - .142	65	85
	aBa62 - 64I FMGRt	3/16"	.063 - .250	.425	.650	.083	.114	.192 - .205 (#11)	145	205
	aBa63 - 66I FMGRt		.188 - .375	.605						
	aBa68 - 612I FMGRt		.438 - .750	1.050						



RIVETKING® 2 IN 1- BLIND RIVET & RIVET NUT TOOL

Why buy two tools when you only need one? This unique tool has the ability to set both blind rivets and rivetnuts. It even has the ability to set 1/4" structural blind rivets and rivetnuts up to 1/2". The changeover from blind rivets to rivet nuts is simple and takes less than 1 minute. Its patented fold away design makes it easy to carry and store. It contains a nose piece for blind rivets and mandrels for rivetnuts in every size and is conveniently stored in the blow molded carry case. Forged steel arms insure durability while comfort soft touch rubberized grips guarantee comfort.



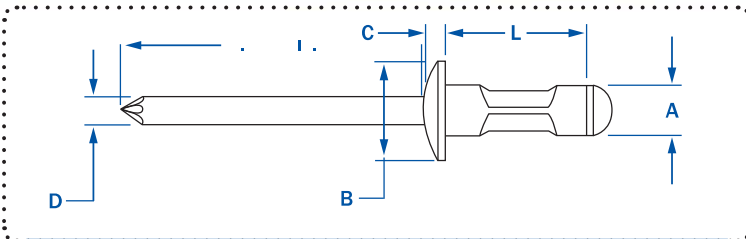
RK-21 BLIND RIVETS = 1/4" & STRUCTURAL RIVET
NUTS = 1/2" OR 12MM

FIND THIS & OTHER GREAT TOOLS ON PAGES 3-6



abs-Ct™ Series • CRIMP STYLE • MULTIGRIP-Ct™

RIVET: 5056 ALUMINUM • MANDREL: STEEL ZINC PLATED



The benefit of a Multigrip is that they offer a wider grip range than traditional blind rivets assisting the users in inventory reduction and part consolidation efforts. The Ct series has excellent hole fill ability and strength as compared to standard blind rivets and Rt series multigrrips. It is produced and when applicable on steel, trivalent zinc plated for ROHS and GMW 3044 compliance.

Rivet: alu Minu M
Mandrel: steel trivalent Zinc Plated

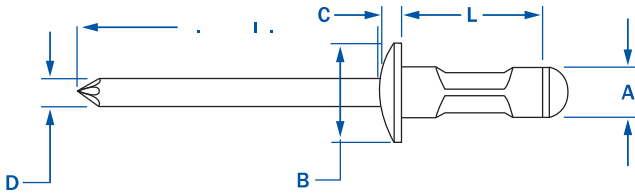


HEAD STYLE	PART NUMBER	A		L		B	C	D	SHEAR	TENSILE
		RIVET SIZE	GRIP RANGE	LENGTH	HEAD DIA	HEAD HEIGHT	MANDREL DIA	HOLE SIZE		
			MIN. - MAX.	MAX	NOM.	NOM.	NOM.	MIN. - MAX.	LBS.F	LBS.F
dOMe Head	aBS - 41 - 43MG	1/8"	.020 - .187	.315	.250	.037	.057	.129 - .138	165	230
	aBS - 42 - 44MG		.046 - .250	.375						
	aBS - 43 - 45MG		.156 - .312	.438						
	aBS - 45 - 46MG		.216 - .375	.500						
	aBS - 51 - 52MG	5/32"	.020 - .156	.270	.312	.047	.086	.161 - .169	255	375
	aBS - 52 - 54MG		.040 - .250	.375						
	aBS - 54 - 56MG		.156 - .375	.500						
	aBS - 56 - 58MG		.250 - .500	.666						
	aBS - 62 - 64MG	3/16"	.062 - .250	.406	.386	.057	.108	.192 - .200	350	530
	aBS - 63 - 67MG		.187 - .437	.595						
	aBS - 66 - 68MG		.250 - .500	.666						
	aBS - 68 - 610MG		.330 - .625	.760						
	aBS - 610 - 612MG		.500 - .750	.978						
	aBS - 82 - 84MG	1/4"	.062 - .250	.472	.511	.070	.141	.257 - .261	630	900
aBS - 84 - 86MG	.156 - .375		.590							
aBS - 86 - 88MG	.250 - .750		.708							
l aRGe Flan Ge	aBS - 42 - 43I FMG	1/8"	.031 - .187	.315	.325	.039	.057	.129 - .138	165	230
	aBS - 42 - 44I FMG		.046 - .250	.375						
	aBS - 44 - 45I FMG		.156 - .312	.438						
	aBS - 52 - 54I FMG	5/32"	.062 - .250	.375	.375	.051	.086	.161 - .169	255	375
	aBS - 53 - 55I FMG		.125 - .312	.438						
	aBS - 55 - 58I FMG		.251 - .500	.690						
	aBS - 62 - 64I FMG	3/16"	.062 - .250	.406	.625	.069	.108	.192 - .200	350	530
	aBS - 66 - 68I FMG		.250 - .500	.666						
aBS - 610 - 612I FMG	.500 - .781		.978							
C'sun K	aCS - 43 - 44MG	1/8"	.093 - .250	.383	.209	.029	.057	.129 - .138	165	230
	aCS - 53 - 55MG	5/32"	.110 - .312	.470	.252	.049	.086	.161 - .169	255	375
	aCS - 62 - 65MG	3/16"	.062 - .312	.500	.345	.051	.108	.192 - .200	350	530
	aCS - 66 - 68MG		.250 - .500	.690						



sbs ct™ SERIES · "CRIMP STYLE" · MULTIGRIP-Ct™

STEEL/STEEL MULTIGRIP "CRIMP STYLE"



The benefit of a Multigrip is that they offer a wider grip range than traditional blind rivets assisting the users in inventory reduction and part consolidation efforts. The Ct series has excellent hole fill ability and strength as compared to standard blind rivets and Rt series multigrrips. It is produced and when applicable on steel, trivalent zinc plated for ROHs and GMw 3044 compliance.

Rivet: steel trivalent Zinc Plated
Mandrel: steel trivalent Zinc Plated



HEAD STYLE	PART NUMBER	RIVET SIZE	GRIP RANGE		LENGTH	HEAD DIA	HEAD HEIGHT	MANDREL DIA	HOLE SIZE	SHEAR	TENSILE
			MIN - MAX	MAX	NOM.	NOM.	NOM.				
dOME Head	sBS - 41 - 43MG	1/8"	.043 - .250	.355	.283	.033	.057	.129 - .133 (#30)	340	385	
	sBS - 42 - 44MG		.125 - .250	.407							
	sBS - 52 - 53MG	5/32"	.056 - .196	.433	.319	.047	.108	.160 - .164 (#20)	440	530	
	sBS - 62 - 63MG	3/16"	.062 - .250	.405	.386	.069	.133	.192 - .196 (#11)	450	787	
	sBS - 63 - 64MG		.187 - .437	.511							

AUTOFAST RIVETING SYSTEMS

RIVETS ARE PROVIDED ON A CONTINUOUS FEED SYSTEM. Rivets are factory installed in mylar tape which is fed through the nose of the riveter. Once the rivet is applied the next rivet is fed to the nose and the take-up spool gathers the waste of the mylar tape. Spent mandrel are drawing into a mandrel catcher located at the rear of the tool. Any standard blind break stem blind rivet can be installed into the mylar strips. Any standard, specialty or structural rivet can be fed into the nose of this tool.



FIND THIS & OTHER GREAT TOOLS ON PAGES 3-6

AVAILABLE MODELS

AF - 500	5/32" MAX
AF - 700	3/16" MAX
AF - 900	1/4" MAX & STRUCTURAL RIVETS

RIVETKING® RIVETS THAT CAN BE INSTALLED INTO MYLAR STRIPS:

STANDARD RIVETS:

- Open End
- Closed End
- Multigrip
- Trifix
- Peel

SEMI-STRUCTURAL RIVETS:

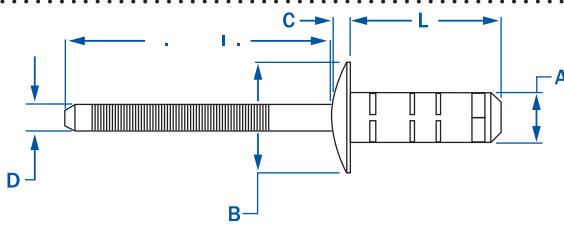
- RK-Q™
- Rivinox™
- K-Vex™
- RivIBulb™
- SuperTriFix™

STRUCTURAL RIVETS:

- Bralobolt™
- I-Lock™
- Stemlock™



HIGH STRENGTH MULTIGRIP



The K-vex™ is an advanced multigrip with increased performance and functionality as compared to standard steel multigrip rivets. It is also the only multigrip that is offered in stainless steel. K-vex™ rivets consist of a wider grip range and a higher shear and tensile strength. The K-vex™ rivet contains an easy entry mandrel head that is grooved and blunt pointed. Its design is rattle resistant and will break flush with the head in the ideal grip range. Its virtual closed end and flush mandrel break makes this rivet leak resistant.

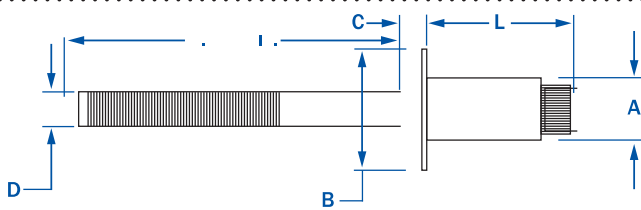
available in steel* and stainless steel
 * Steel Parts are plated with clear trivalent zinc



MATERIAL	HEAD STYLE	PART NUMBER	RIVET SIZE	A		L		B		C		D		SHEAR 1		SHEAR 2		TENSILE
				GRIP RANGE	LENGTH	HEAD DIA	HEAD HEIGHT	MANDREL DIA	HOLE SIZE	STEM IN SHEAR PLANE	STEM OUTSIDE SHEAR PLANE							
				MIN. - MAX.	MAX.	MAX.	MAX.	MAX.	MIN. - MAX.	LBS.F	LBS.F							
steel	dOMe	sBS - 0414 - KVX	1/8"	.040 - .276	.560	.300	.044	.087	.129 - .133	293	225	315						
		sBS - 0516 - KVX	5/32"	.079 - .315	.620	.330	.060	.110	.161 - .165	518	338	450						
		sBS - 0612 - KVX	3/16"	.059 - .200	.480	.398	.063	.118	.193 - .197	945	608	653						
		sBS - 0614 - KVX		.059 - .250	.540													
		sBS - 0618 - KVX		.059 - .375	.670													
		sBS - 0622 - KVX		.251 - .500	.791													
	sBS - 4844 - KVX	1/4"	.059 - .201	.480	.516	.106	.158	.260 - .272	1508	698	810							
	laRGe Flan Ge	sBS - 0614I F - KVX	3/16"	.059 - .250	.540	.638	.083	.118	.193 - .197	945	608	653						
		sBS - 0618I F - KVX		.059 - .375	.670													
		sBS - 0622I F - KVX		.251 - .500	.791													
C'sun K	SCS - 0614 - KVX	3/16"	.059 - .250	.540	.346	.055	.118	.193 - .197	945	608	653							
	sCS - 0618 - KVX		.059 - .375	.670														
	sCS - 0622 - KVX		.251 - .500	.792														
stainless steel	dOMe	FBF - 0612 - KVX	3/16"	.059 - .200	.480	.398	.063	.118	.193 - .197	945	608	653						
		FBF - 0614 - KVX		.059 - .250	.540													
		FBF - 0618 - Kvx		.059 - .375	.670													
		FBF - 0622 - Kvx		.251 - .500	.791													



HIGH STRENGTH OPEN END ° SELF PLUGGING BLIND RIVET



The RK-Q™ offers is self plugging and offers an interference fit between the knurled mandrel, the rivet body and the hole diameter of the workpiece. Its self plugging properties insure that the mandrel is locked within the shear plane which results in superior shear and tensile strength. The RK-Q™ has a grooved, rattle resistant mandrel which breaks flush with the head in the ideal grip range.

available in steel*, stainless steel and alu Minu M
 * Steel Parts are plated with clear trivalent zinc

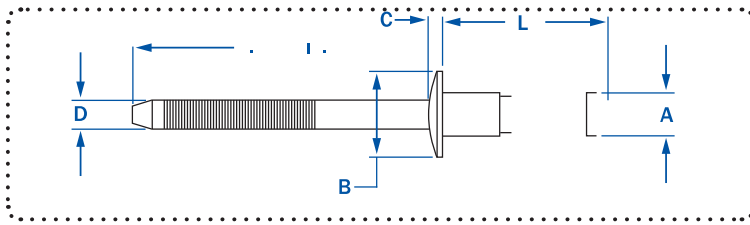


	HEAD STYLE	PART NUMBER	A		L		B		C		D	
			RIVET SIZE	GRIP RANGE	LENGTH	HEAD DIA	HEAD HEIGHT	MANDREL DIA	HOLE SIZE	SHEAR	TENSILE	
				MIN - MAX	MAX	NOM.	NOM.	NOM.	MIN. - MAX.	LBS.F	LBS.F	
steel	dOMe	sBQ - 42	1/8"	.063 - .125	.275	.250	.040	.074	.129 - .133 (#30)	450	350	
		sBQ - 43		.094 - .187	.337							
		sBQ - 44		.126 - .250	.400							
		sBQ - 52	5/32"	.062 - .125	.300	.312	.050	.095	.160 - .164 (#20)	525	500	
		sBQ - 54		.126 - .250	.425							
		sBQ - 56		.251 - .375	.550							
		sBQ - 62	3/16"	.062 - .125	.325	.375	.060	.059	.192 - .196 (#11)	900	700	
		sBQ - 64		.126 - .250	.450							
		sBQ - 66		.251 - .375	.575							
sBQ - 68	.376 - .500	.700										
stainless steel	dOMe	FBQ - 42	1/8"	.063 - .125	.275	.250	.040	.074	.129 - .133 (#30)	550	530	
		FBQ - 43		.094 - .187	.337							
		FBQ - 44		.126 - .250	.400							
		FBQ - 52	5/32"	.062 - .125	.300	.312	.050	.095	.160 - .164 (#20)	850	820	
		FBQ - 54		.126 - .250	.425							
		FBQ - 56		.251 - .375	.550							
		FBQ - 62	3/16"	.062 - .125	.325	.375	.060	.059	.192 - .196 (#11)	1325	1200	
		FBQ - 64		.126 - .250	.450							
		FBQ - 66		.251 - .375	.575							
FBQ - 68	.376 - .500	.700										
alu Minu M	dOMe	aBQ - 42	1/8"	.063 - .125	.275	.250	.040	.074	.129 - .133 (#30)	220	180	
		aBQ - 43		.094 - .187	.337							
		aBQ - 44		.126 - .250	.400							
		aBQ - 52	5/32"	.062 - .125	.300	.312	.050	.095	.160 - .164 (#20)	340	300	
		aBQ - 54		.126 - .250	.425							
		aBQ - 56		.251 - .375	.550							
		aBQ - 62	3/16"	.062 - .125	.325	.375	.060	.059	.192 - .196 (#11)	480	400	
		aBQ - 64		.126 - .250	.450							
		aBQ - 66		.251 - .375	.575							
aBQ - 68	.376 - .500	.700										



RIVETKING® RIVINOX™

STAINLESS STEEL • HIGH SHEAR • REAR FLANGE RIVET



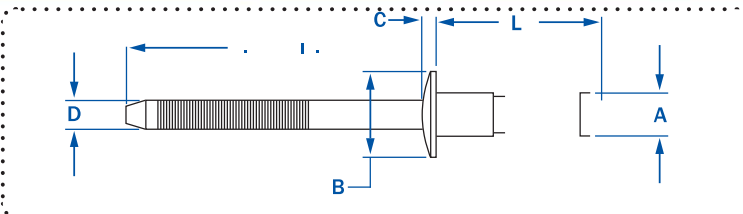
rivet : 18 8 s stainless
Mandrel: 18 8 s stainless



PART NUMBER	RIVET SIZE	GRIP RANGE	LENGTH	HEAD DIA	HEAD HEIGHT	MANDREL DIA	HOLE SIZE	SHEAR	TENSILE
		MIN - MAX	NOM.	MAX.	MAX.	NOM.	MIN - MAX	LBS.F	LBS.F
FBF - 0408	1/8"	.040 - .118	.350	.250	.043	.082	.129 - .134	719	450
FBF - 0411		.118 - .197	.450						
FBF - 0414		.197 - .276	.540						
FBF - 0509	5/32"	.039 - .118	.400	.312	.060	.104	.191 - .169	1169	899
FBF - 0512		.118 - .197	.480						
FBF - 0516		.197 - .276	.600						
FBF - 0611	3/16"	.059 - .138	.510	.375	.070	.127	.193 - .201	1236	1124
FBF - 0614		.138 - .236	.610						
FBF - 0618		.236 - .335	.730						

RIVETKING® RIVBULB™

ALL STEEL • HIGH SHEAR • REAR FLANGE RIVET



rivet : c 1006 steel, trivalent Zinc yellow Plated
Mandrel: c 1045 steel, tri-Zinc Plated



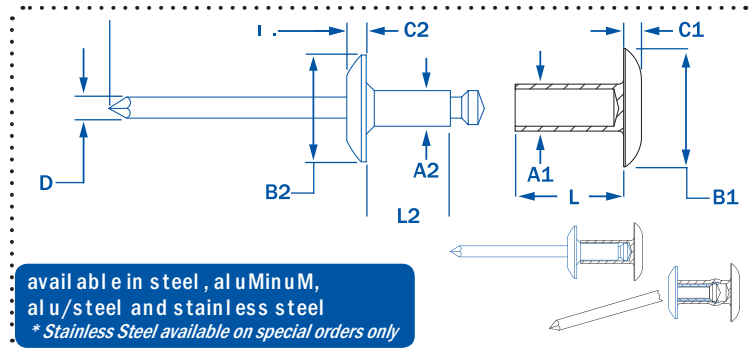
		GRIP RANGE	LENGTH	HEAD DIA	HEAD HEIGHT	MANDREL DIA	HOLE SIZE	SHEAR	TENSILE
		MIN - MAX	NOM.	MAX.	MAX	NOM.	MIN - MAX	LBS.F	LBS.F
sBS - 0408	1/8"	.040 - .118	.350	.250	.043	.082	.129 - .134	270	293
sBS - 0411		.118 - .197	.450					270	293
sBS - 0414		.197 - .276	.540					270	293
sBS - 0509	5/32"	.039 - .118	.400	.312	.060	.104	.161 - .169	540	630
sBS - 0512		.118 - .197	.480					788	630
sBS - 0516		.197 - .276	.600					923	630
sBS - 0611	3/16"	.059 - .138	.510	.375	.070	.127	.193 - .201	788	855
sBS - 0614		.138 - .236	.610					945	855
sBS - 0618		.236 - .335	.730					1260	855
sBS - M6x10	6mm	.060 - .156	.413	.472	.078	.156	.240 - .248	945	1215
sBS - M6x13		.118 - .236	.532					1215	1215
sBS - M6x16		.236 - .354	.650					1913	1215
sBS - M6x19		.354 - .472	.768					1913	1215



RivetKing® CHECKMATE™

2 PIECE RIVET • MALE/FEMALE

The RivetKing® Checkmate™ is the only breakstem permanent fastener to have near flush and aesthetically appealing installation on both sides. A true head on both sides of the rivet. This rivet is offered in extended lengths and has one of the longest grip ranges available.



available in steel, aluminum, aluminum/steel and stainless steel
 *Stainless Steel available on special orders only

NOM. BODY DIA.	PART CODE	GRIP RANGE		LENGTH MAX.	FEMALE COMPONENT			MALE COMPONENT			
		min.	max.		FEMALE DIA. A1	HEAD DIA. B1	HEAD HEIGHT C1	MALE DIA. A2	HEAD DIA. B2	HEAD HEIGHT C2	L2
3/16"	6-12-CM	0.625	0.750	0.585	0.187	0.375	0.060	.125	.375	.060	.525
	6-14-CM	0.687	0.875	0.647							
	6-17-CM	0.875	1.062	0.825							
	6-20-CM	1.062	1.250	1.012							
	6-23-CM	1.250	1.437	1.200							
	6-26-CM	1.437	1.625	1.387							
	6-29-CM	1.625	1.812	1.575							
	6-32-CM	1.812	2.000	1.762							
1/4"	8-12-CM	0.625	0.750	0.580	0.250	0.625	.100	0.187	.625	.100	.608
	8-14-CM	0.750	0.875	0.695							
	8-18-CM	0.875	1.125	0.820							
	8-22-CM	1.125	1.375	1.070							
	8-26-CM	1.375	1.625	1.320							
	8-30-CM	1.625	1.875	1.570							
	8-34-CM	1.875	2.125	1.820							
	8-38-CM	2.125	2.375	2.070							
	8-42-CM	2.375	2.625	2.320							
	8-46-CM	2.625	2.875	2.570							
	8-50-CM	2.875	3.125	2.820							
	8-54-CM	3.125	3.375	3.070							
	8-58-CM	3.375	3.625	3.320							
	8-62-CM	3.625	3.875	3.570							

MATERIALS

ALL STEEL	SBS
ALL ALUMINUM	ABA
ALUMINUM STEEL	ABS
ALL STAINLESS	FBF

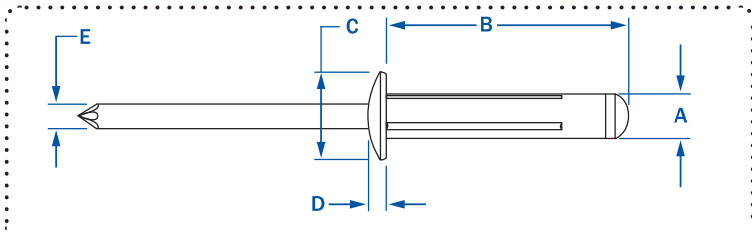
INSTALLED VALUES

INSTALLED VALUES IN NOMINAL GRIP (lbs.)

		RIVET/MANDREL/TUBULAR COMPONENT:		
		ALUM/ALUM/ALUM	STEEL/STEEL/STEEL	ALUM/STEEL/ALUM
3/16"	TENSILE	100	200	300
1/4"	TENSILE	200	350	450



ALL ALUMINUM • TRI-FOLDING RIVET

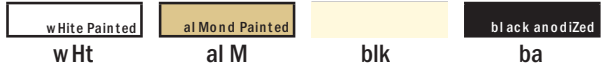


perfect for inconsistent grip ranges or oversize out-of-round holes that are typical in plastics. RivetKing® Trifix™ is designed to work like a moly-bolt in that it splits out into three legs at the backside. its extended bearing surface spreads the load over a wider area to prevent pullout in plastics or other similar soft or thin sheet materials. Bright polished and stocked in white, black and almond colors.

rivet : alu Minu M
Mandrel: alu Minu M



STOCK COLORS



HEAD STYLE	PART NUMBER	A RIVET SIZE	L		B HEAD DIA	C HEAD HEIGHT	D MANDREL DIA	HOLE SIZE	SHEAR	TENSILE
			GRIP RANGE	LENGTH						
			MIN - MAX	MAX.	NOM.	NOM.	NOM.	MIN - MAX	LBS.F	LBS.F
dOMe Head	aBL - 0516	5/32"	.040 - .118	.630	.315	.032	.094	.165 - .178	134	224
	aBL - 0523		.040 - .275	.840						
	aBL - 0530		.157 - .472	1.070						
	aBL - 0619	3/16"	.040 - .157	.720	.386	.386	.114	.196 - .209	202	269
	aBL - 0625		.040 - .354	.920						
	aBL - 0630		.157 - .472	1.070						
	aBL - 0640		.157 - .625	1.200						
IaRGe Flan Ge	aBL - 0523I F	5/32"	.040 - .275	.840	.472	.055	.094	.165 - .178	134	224
	aBL - 0625I F14	3/16"	.040 - .354	.920	.551	.062	.114	.196 - .209	202	269
	aBL - 0625I F16		.625	.070						
painted dOMe Head	aBL 0523/ Ba	5/32"	.040 - .275	.840	.315	.032	.094	.165 - .178	134	224
	aBL - 0625/ WHt	3/16"	.040 - .354	.920	.386	.386	.114	.196 - .209	202	269
	aBL - 0625/ ALM									
	aBL 0625/ Ba	3/16"	.157 - .472	1.070	.386	.386	.114	.196 - .209	202	269
	aBL - 0630/ WHt									
	aBL - 0630/al M									
aBL 0630/ Ba										



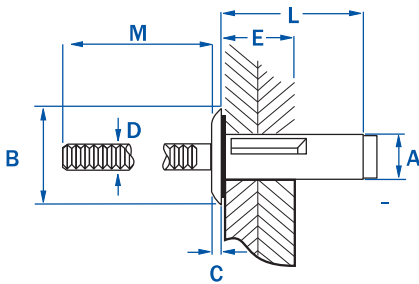
* can color match to pantone, r al or sample upon request.

sample color of the trif ix™



RIVETKING® SUPERTRIFIX™

ALL ALUMINUM • HIGH STRENGTH TRI-FOLDING RIVET



The Super Trifix™ is designed for use in thin sheet metal or soft materials where strength of the riveted joint is of concern. typically used in repair and replacement of solid rivets in truck bodies, these rivet offer superior shear and tensile strength then that of the standard Tri-Fix™. The mandrel stays within the shear plane and breaks flush with the head. A neoprene washer is affixed under the head to make a weather tight seal. Due to the externally locked mandrel, a special nose piece is required for the installation tool.

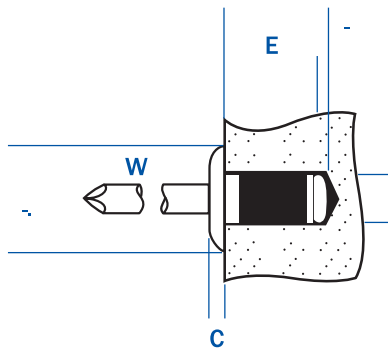


	RIVET SIZE	LENGTH	HEAD DIA	HEAD HEIGHT	MANDREL DIA	OVERALL LENGTH	GRIP RANGE	HOLE SIZE	LBS. F	
aBl 0623/ STFx	3/16"	.807 (20.5)	.449 (11.4)	.079 (2.00)	.122 (3.10)	.935 (23.75)	.012 - .197 (0.5 - 5.0)	.209 - .220 (5.30 - 5.60)	733	427
aBl 0633/ STFx	(5.2)*	1.043 (26.5)				1.171 (29.75)	.177 - .433 (4.5 - 11.0)			

*3/16"

these rivets are made according to a d in standard in which the body diameter is actually .205 (5.2mm). the 3/16" inch designation has been applied as a reference only as the actual rivet is .205 diameter. please insure the hole design is .208 - .221 to accommodate the rivet.

grooved rivets™



Grooved Rivets are designed to be installed within a hole made of a fibered material such as wood and some low-medium density plastics. when set properly, the annular rings of the grooved rivet will bite into the wood or plastic and will radially expand within the hole. Keep in mind, this rivet is designed to expand within a hole and not at the rear side like most blind rivets. Only one fibered material is necessary as long as it is the final substrate. Other materials can be fastened to wood products as long as it is between the head and the wood. In this case be sure there is enough material thickness of the fiber material so the rivet can seat properly.



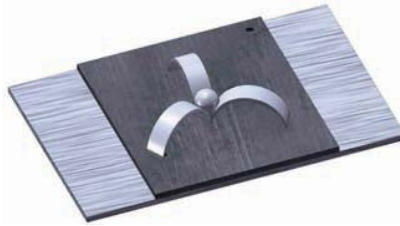
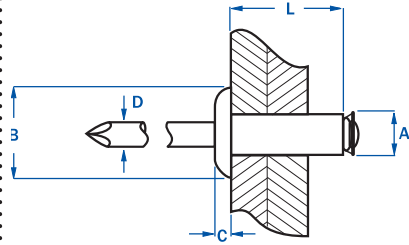
RIVET DIA.	GRIP RANGE	LENGTH	HEAD DIA	HEAD HEIGHT	MANDREL DIA	SHEAR	TENSILE
	MAX.						
1/8"	.039	.236	.256	.031	.071	134	180
	.315	.157					
5/32"	.472	.236	.315	.039	.087	202	315
	.630	.315					
	.315	.157					
3/16"	.394	.236	.374	.043	.108	360	585
	.472	.315					
	.551	.394					
	.709	.512					
	.827	.591					
	.945	.787					

R I V E T



K I

Peel rivet^{ts} ALUMINUM/STEEL



RivetKing® peel Rivets™ work great in plastic and soft materials with out of round holes. The rivet is scored by the mandrel and split into three parts. ts-16949 produced and when applicable on steel, trivalent zinc plated for ROHs and GMW 3044 compliance.

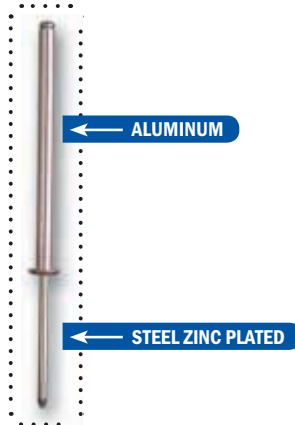
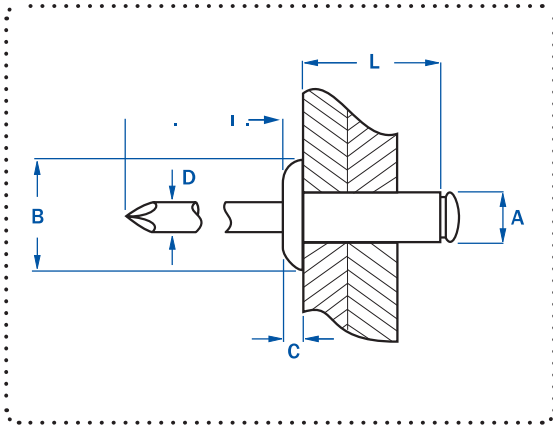


RIVET SIZE	PART NUMBER	GRIP RANGE MAX.	A		B		HEAD HEIGHT MAX.	L		HOLE SIZE	SHEAR	TENSILE
			SHANK DIAMETER MIN.	SHANK DIAMETER MAX.	HEAD DIAMETER MIN.	HEAD DIAMETER MAX.		LENGTH MIN.	LENGTH MAX.			
1/8"	aBsM3.2x8/pl R	.138	.121	.129	.229	.264	.051	.315	.354	.129	225	270
	aBsM3.2x10/pl R	.197	.121	.129	.229	.264	.051	.394	.433			
	aBsM3.2x12/pl R	.275	.121	.129	.229	.264	.051	.472	.511			
	aBsM3.2x14/pl R	.354	.121	.129	.229	.264	.051	.551	.590			
	aBsM3.2x16/pl R	.433	.121	.129	.229	.264	.051	.630	.669			
aBsM3.2x18/pl R	.512	.121	.129	.229	.264	.051	.709	.748				
5/32"	aBsM4x8/pl R	.157	.152	.158	.272	.331	.067	.315	.354	.165	324	325
	aBsM4x10/pl R	.236	.152	.158	.272	.331	.067	.394	.433			
	aBsM4x12/pl R	.315	.152	.158	.272	.331	.067	.472	.511			
	aBsM4x14/pl R	.393	.152	.158	.272	.331	.067	.551	.590			
	aBsM4x16/pl R	.479	.152	.158	.272	.331	.067	.630	.669			
	aBsM4x18/pl R	.551	.152	.158	.272	.331	.067	.709	.748			
	aBsM4x20/pl R	.630	.152	.158	.272	.331	.067	.787	.826			
aBsM4x25/pl R	.826	.152	.158	.272	.331	.067	.984	1.023				
3/16"	aBsM4.8x10/pl R	.197	.183	.193	.327	.398	.079	.394	.433	.196	405	353
	aBsM4.8x12/pl R	.275	.183	.193	.327	.398	.079	.472	.511			
	aBsM4.8x14/pl R	.354	.183	.193	.327	.398	.079	.551	.590			
	aBsM4.8x16/pl R	.433	.183	.193	.327	.398	.079	.630	.669			
	aBsM4.8x18/pl R	.512	.183	.193	.327	.398	.079	.709	.748			
	aBsM4.8x21/pl R	.630	.183	.193	.327	.398	.079	.827	.865			
	aBsM4.8x24/pl R	.748	.183	.193	.327	.398	.079	.945	.984			
	aBsM4.8x27/pl R	.866	.183	.193	.327	.398	.079	1.063	1.102			
	aBsM4.8x30/pl R	.984	.183	.193	.327	.398	.079	1.181	1.220			
	aBsM4.8x32/pl R	1.063	.183	.193	.327	.398	.079	1.260	1.248			
	aBsM4.8x35/pl R	1.181	.183	.193	.327	.398	.079	1.378	1.417			
	aBsM4.8x40/pl R	1.260	.183	.193	.327	.398	.079	1.575	1.614			
	aBsM4.8x45/pl R	1.456	.183	.193	.327	.398	.079	1.772	1.810			
aBsM4.8x45/pl R	1.653	.183	.193	.327	.398	.079	1.968	2.007				
5MM	aBsM5x40/pl R	1.260	.193	.201	.342	.413	.079	1.575	1.614	.204	450	472
	aBsM5x45/pl R	1.456	.193	.201	.342	.413	.079	1.772	1.810			
	aBsM5x50/pl R	1.653	.193	.201	.342	.413	.079	1.968	2.007			
	aBsM5x55/pl R	1.850	.193	.201	.342	.413	.079	2.165	2.204			
	aBsM5x60/pl R	2.047	.193	.201	.342	.413	.079	2.362	2.401			
	aBsM5x65/pl R	2.244	.193	.201	.342	.413	.079	2.559	2.598			
	aBsM5x70/pl R	2.440	.193	.201	.342	.413	.079	2.756	2.795			
	aBsM5x75/pl R	2.677	.193	.201	.342	.413	.079	2.952	2.991			
	aBsM5x80/pl R	2.834	.193	.201	.342	.413	.079	3.149	3.188			
	aBsM5x90/pl R	3.149	.193	.201	.342	.413	.079	3.543	3.582			
	aBsM5x100/pl R	3.543	.193	.201	.342	.413	.079	3.937	3.976			
	aBsM5x110/pl R	3.937	.193	.201	.342	.413	.079	4.330	4.369			
	aBsM5x120/pl R	4.330	.193	.201	.342	.413	.079	4.724	4.763			
	aBsM5x130/pl R	4.724	.193	.201	.342	.413	.079	5.118	5.157			
	aBsM5x140/pl R	5.119	.193	.201	.342	.413	.079	5.512	5.551			
	aBsM5x150/pl R	5.511	.193	.201	.342	.413	.079	5.905	5.944			
	aBsM5x160/pl R	5.905	.193	.201	.342	.413	.079	6.299	6.338			
aBsM5x170/pl R	6.299	.193	.201	.342	.413	.079	6.693	6.732				
aBsM5x180/pl R	6.692	.193	.201	.342	.413	.079	7.086	7.125				
aBsM5x190/pl R	7.086	.193	.201	.342	.413	.079	7.480	7.519				
1/4"	aBsM6.4x35/pl R	1.181	.246	.256	.457	.528	.106	1.378	1.417	.260	550	786
	aBsM6.4x50/pl R	1.653	.246	.256	.457	.528	.106	1.968	2.007			
	aBsM6.4x80/pl R	2.834	.246	.256	.457	.528	.106	3.149	3.188			
	aBsM6.4x100/pl R	3.543	.246	.256	.457	.528	.106	3.937	3.976			
	aBsM6.4x120/pl R	4.330	.246	.256	.457	.528	.106	4.724	4.763			
	aBsM6.4x150/pl R	5.511	.246	.256	.457	.528	.106	5.905	5.944			
	aBsM6.4x175/pl R	6.496	.246	.256	.457	.528	.106	6.890	6.928			
	aBsM6.4x200/pl R	7.480	.246	.256	.457	.528	.106	7.874	7.913			



Long length rivet

ALUMINUM / STEEL LONG LENGTH BLIND RIVETS DOME HEAD



PART NUMBER	RIVET SIZE	GRIP RANGE		LENGTH	HEAD DIA	HEAD HEIGHT	MANDREL DIA	HOLE SIZE	SHEAR	TENSILE					
		MIN-MAX	MAX								NOM.	NOM.	NOM.	MAX	LBS.
01050004035	5/32"	1.02 - 1.25	1.38	.300	.047	.083	.161	180	220						
01050004040		1.25 - 1.44	1.57												
01050005040		1.18 - 1.38	1.57												
01050005045		1.37 - 1.58	1.77												
01050005050		1.57 - 1.77	1.97												
01050005055		1.77 - 1.98	2.17												
01050005060		1.98 - 2.17	2.37												
01050005065		2.17 - 3.26	2.57												
01050005070		2.36 - 2.56	2.77												
01050005075		2.56 - 2.75	2.95												
01050005080		2.76 - 2.95	3.15												
01050005090		2.95 - 3.35	3.54							.366	.060	.108	.200	450	618
010500050100		3.35 - 3.74	3.93												
010500050110		3.74 - 4.13	4.33												
010500050120	1.14 - 4.53	4.72													
010500050130	4.52 - 4.92	5.12													
010500050140	4.92 - 5.32	5.52													
010500050150	5.32 - 5.71	6.29													
010500050160	5.71 - 5.91	4.77	.512	.079	.142	2.56	550	765							
01050006480	1.65 - 2.87	3.15													
010500064100	2.87 - 3.66	3.93													
010500064120	3.66 - 4.45	4.72													
010500064150	4.45 - 5.63	6.91													
010500064175	5.63 - 6.61	6.89													
010500064200	6.61 - 7.60	7.87													

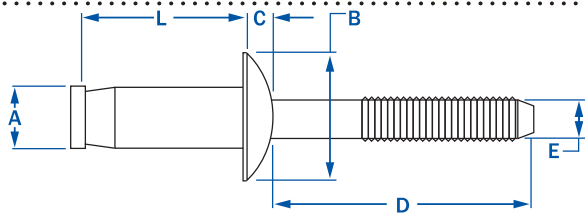
3/16" **

the 3/16" rivets are made according to din7337 standard in which the body diameter is actually 5mm (.196). the 3/16" inch designation has been applied as a reference only as the actual rivet is .196 diameter. please insure the hole design is greater then .200 to accommodate the rivet.



RIVETKING® STEMLOCK™

STRUCTURAL BLIND RIVETS ° STEEL/ ALUMINUM

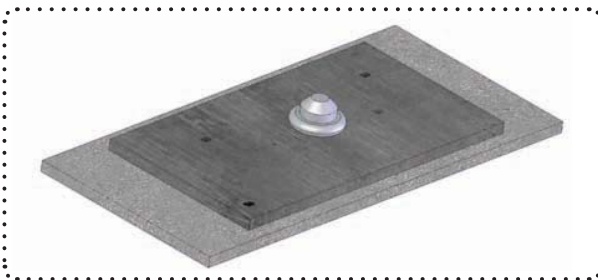


the stemlock™ is an advanced structural fastening solution that has among the highest shear and tensile values available because the mandrel is locked into the shear plane. the internal locking mechanism insures positive mandrel retention and will break flush with the head. The Stemlock™ is designed to form a bearing surface flange at the rear side of the substrate. This rear flange is perfect for thin sheets or imperfect holes offering impressive clamp up forces without deforming the substrate.

available Materials: all s teel, all alu Minu M do Me Head



		standard flange								
A		L	B	C	D	E				
RIVET SIZE	PART NUMBER	GRIP RANGE	RIVET LENGTH	BODY	HEAD DIA.	HEAD HEIGHT	MANDREL DIA.	BACKSIDE CLEARANCE	SHEAR STRENGTH	TENSILE STRENGTH
		MIN. - MAX.	MAX.	DIA.	MAX.	MAX.	DIA.	MIN.	LBF	LBF
1/4"	sBs-0812/st M	.068 - .138	.539	.263 .271	.530	.110	n/R	.480	3.820	2.090
	sBs-0813/st M	.110 - .189	.590							
	sBs-0814/st M	.132 - .211	.612							
	sBs-0815/st M	.189 - .268	.669							
	sBs-0817/st M	.268 - .346	.747							
	sBs-0818/st M	.295 - .374	.775							
	sBs-0819/st M	.346 - .425	.826							
	sBs-0821/st M	.425 - .504	.905							
1/4"	aBa-0812/st M	.068 - .138	.539	.263 .271	.530	.110	n/R	.480	typiCal peRFoRMAnCe	
	aBa-0813/st M	.110 - .189	.590						1,124 lbs.f	606 lbs.f
	aBa-0814/st M	.132 - .211	.612						1,348 lbs.f	
	aBa-0815/st M	.189 - .268	.669						1,393 lbs.f	
	aBa-0817/st M	.268 - .346	.747						1,461 lbs.f	
	aBa-0818/st M	.295 - .374	.775						1,573 lbs.f	
	aBa-0819/st M	.346 - .425	.826						1,573 lbs.f	
	aBa-0821/st M	.425 - .504	.905						1,573 lbs.f	

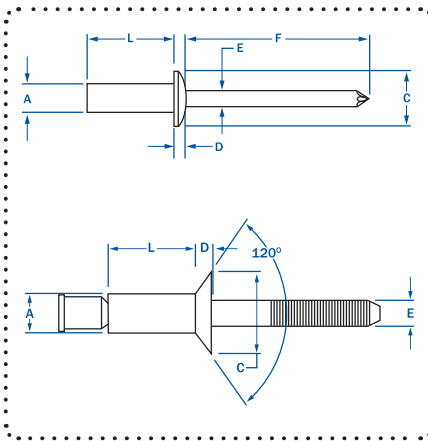


BRALOBOLT® / rivet king® unobolt®

STRUCTURAL BLIND RIVETS • EXTERNAL LOCKING

available in steel, alu Minu M, and stainless steel

* A Special nose piece is required to set externally locked structural blind rivets.



The RivetKing® BraloBolt®/unobolt® is a structural rivet with an external locking feature. This locking feature is visible after the rivet is applied. When applied, the special nose piece that is required to set the rivet creates a small expansion of a shoulder on the mandrel in a pocket located on the surface of the rivet head. The locking feature can then be inspected and confirmed to be effective during assembly. The BraloBolt®/unobolt® has a stronger clamp up than the i-lock® and is tighter at minimum grip. The mandrel is retained within the shear plane yielding high strength under shear loads and the external lock insures positive mandrel retention which results in high strength under pullout loads. Typically used in the manufacturing or repair of truck bodies, the i-lock® is leak resistant and has excellent clamp-up force. The i-lock® has a wide grip range and is offered in two diameters and two lengths. The mandrel breaks flush with the head when applied and is set with a special nose piece.

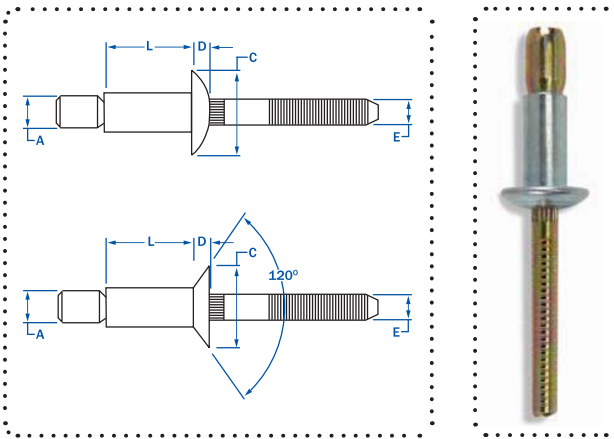


MATERIAL	PART NUMBER	RIVET SIZE	GRIP RANGE		HEAD STYLE	LENGTH	HEAD DIA	HEAD HEIGHT	MANDREL DIA	HOLE SIZE	SHEAR	TENSILE	MANDREL PUSHOUT
			MIN. - MAX.	MAX.									
al uMinu M	aBA - 64 - BIT	3/16"	.062 - .250	dome	.416	.400	.090	.118	.194 - .204 (#10)	674	495	50	
	aBA - 67 - BIT		.062 - .437	dome	.577								
	aBA - 86 - BIT	1/4"	.080 - .375	dome	.556	.530	.117	.157	.261 - .276 (G)	1349	944	100	
	aBA - 810 - BIT		.080 - .625	dome	.847								
	aCA - 88 - BIT		.125 - .500	C'sunk	.722	.420	.070	.157					
steel	sBS - 64 - BIT	3/16"	.062 - .250	dome	.297	.400	.090	.118	.194 - .204 (#10)	1438	1147	100	
	sBS - 67 - BIT		.062 - .437	dome	.360								
	sBS - 86 - BIT	1/4"	.080 - .375	dome	.422	.530	.117	.157	.261 - .276 (G)	2675	2360	250	
	sBS - 810 - BIT		.080 - .625	dome	.485								
	sCS - 88 - BIT		.125 - .500	C'sunk	.547	.420	.070	.157					
stainless	FBF - 64 - BIT	3/16"	.062 - .250	dome	.375	.400	.090	.118	.194 - .204 (#10)	1438	1146	100	
	FBF - 67 - BIT		.062 - .437	dome	.437								
	FBF - 86 - BIT	1/4"	.080 - .375	dome	.500	.530	.117	.157	.261 - .276 (G)	2630	2360	250	
	FBF - 810 - BIT		.080 - .625	dome	1.195								
	FCF - 88 - BIT		.125 - .500	C'sunk	1.320	.420	.070	.157					



STRUCTURAL BLIND RIVETS • INTERNAL LOCKING

available in steel, alu Minu M, and stainless steel
 * Any nose piece can be used, no special requirement.



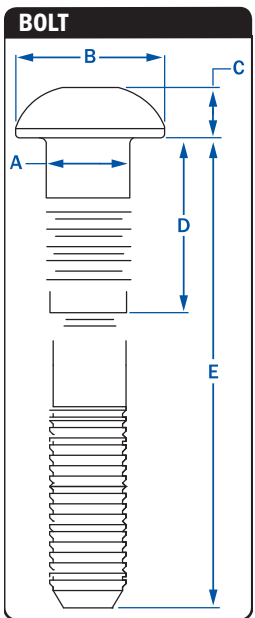
The RivetKing® i-LOCK® is a structural rivet with an internal locking feature. The locking feature is not visible when the rivet is applied. The mandrel is retained within the shear plane yielding high strength under shear loads and the internal lock insures positive mandrel retention which results in high strength under pullout loads. Typically used in the manufacturing or repair of truck bodies, the i-LOCK® is leak resistant and has excellent clamp-up force. The i-LOCK® has a wide grip range and is offered in two diameters and two lengths. The mandrel breaks flush with the head when applied and is set **without** a special nose piece.

MATERIAL	PART NUMBER	A		HEAD STYLE	L		B		C		D	
		RIVET SIZE	GRIP RANGE		LENGTH	HEAD DIA.	HEAD HEIGHT	MANDREL DIA.	HOLE SIZE	SHEAR	TENSILE	MANDREL PUSHOUT
			MIN. - MAX.		MAX.	NOM.	NOM.	REF.	MIN. - MAX.	LBS.F	LBS.F	LBS.F
alu Minu M	aBA - 64 - STR	3/16"	.062 - .270	dome	.415	.385	.085	.118	.191 - .201 (#10)	600	500	50
	aBA - 67 - STR		.214 - .437	dome	.572							
	aBA - 67E - STR		.062 - .437	dome	.572							
	aBA - 86 - STR	1/4"	.080 - .375	dome	.560	.525	.117	.157	.261 - .272 (G)	1300	890	100
	aBA - 810 - STR		.350 - .625	dome	.810							
	aBA - 810E - STR		.080 - .625	dome	.810							
	aCA - 88 - STR		.160 - .475	C'sunk	.660							
steel	sBS - 64 - STR	3/16"	.062 - .270	dome	.415	.385	.085	.118	.194 - .204 (#10)	1300	1200	150
	sBS - 67 - STR		.214 - .437	dome	.572							
	sBS - 67E - STR		.062 - .437	dome	.572							
	sBS - 86 - STR	1/4"	.080 - .375	dome	.560	.525	.117	.157	.261 - .276 (G)	2500	2200	300
	sBS - 810 - STR		.350 - .625	dome	.810							
	sBS - 810E - STR		.080 - .625	dome	.810							
	sCS - 88 - STR		.160 - .475	C'sunk	.660							
stainless	FBF - 64 - STR	3/16"	.062 - .270	dome	.415	.385	.090	.118	.194 - .204 (#10)	1300	950	100
	FBF - 67 - STR		.214 - .437	dome	.572							
	FBF - 67E - STR		.062 - .437	dome	.572							
	FBF - 86 - STR	1/4"	.080 - .375	dome	.560	.525	.117	.157	.261 - .276 (G)	2350	1800	200
	FBF - 810 - STR		.350 - .625	dome	.810							
	FBF - 810E - STR		.080 - .625	dome	.810							
	FCF - 88 - STR		.160 - .475	C'sunk	.660							

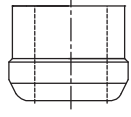


fixed griP COLLAR BOLT

GRIPS										
NOM. BODY DIA.	PART NUMBER					GRIP RANGE		NOTCH LENGTH	OVERALL LENGTH	MAX HOLE SIZE
	Cate GORy	size	Head	Mate Rial	pla tin G	MIN.	MAX.			
3/16"	CBHF	6-2	t R	s	z	0.063	0.188	0.394	1.404	0.203
	CBHF	6-3	t R	s	z	0.125	0.250	0.457	1.466	
	CBHF	6-4	t R	s	z	0.188	0.313	0.519	1.529	
	CBHF	6-5	t R	s	z	0.250	0.375	0.582	1.591	
	CBHF	6-6	t R	s	z	0.313	0.438	0.644	1.654	
	CBHF	6-7	t R	s	z	0.375	0.500	0.707	1.716	
	CBHF	6-8	t R	s	z	0.438	0.563	0.769	1.779	
	CBHF	6-9	t R	s	z	0.500	0.625	0.832	1.841	
	CBHF	6-10	t R	s	z	0.563	0.688	0.894	1.904	
	CBHF	6-11	t R	s	z	0.625	0.750	0.957	1.966	
	CBHF	6-12	t R	s	z	0.688	0.813	1.019	2.029	
	CBHF	6-13	t R	s	z	0.750	0.875	1.082	2.091	
	CBHF	6-14	t R	s	z	0.813	0.938	1.144	2.154	
	CBHF	6-15	t R	s	z	0.875	1.000	1.207	2.216	
	CBHF	6-16	t R	s	z	0.938	1.063	1.269	2.279	
	CBHF	6-17	t R	s	z	1.000	1.125	1.332	2.341	
	CBHF	6-18	t R	s	z	1.063	1.188	1.394	2.404	
	CBHF	6-19	t R	s	z	1.125	1.250	1.457	2.466	
	CBHF	6-20	t R	s	z	1.188	1.313	1.519	2.529	
	1/4"	CBHF	8-2	t R	s	z	0.063	0.188	0.485	
CBHF		8-3	t R	s	z	0.125	0.250	0.548	1.583	
CBHF		8-4	t R	s	z	0.188	0.313	0.610	1.645	
CBHF		8-5	t R	s	z	0.250	0.375	0.673	1.708	
CBHF		8-6	t R	s	z	0.313	0.438	0.735	1.770	
CBHF		8-7	t R	s	z	0.375	0.500	0.798	1.833	
CBHF		8-8	t R	s	z	0.438	0.563	0.860	1.895	
CBHF		8-9	t R	s	z	0.500	0.625	0.923	1.958	
CBHF		8-10	t R	s	z	0.563	0.688	0.985	2.020	
CBHF		8-11	t R	s	z	0.625	0.750	1.048	2.083	
CBHF		8-12	t R	s	z	0.688	0.813	1.110	2.145	
CBHF		8-13	t R	s	z	0.750	0.875	1.173	2.208	
CBHF		8-14	t R	s	z	0.813	0.938	1.235	2.270	
CBHF		8-15	t R	s	z	0.875	1.000	1.298	2.333	
CBHF		8-16	t R	s	z	0.938	1.063	1.360	2.395	
CBHF		8-17	t R	s	z	1.000	1.125	1.423	2.458	
CBHF		8-18	t R	s	z	1.063	1.188	1.485	2.520	
CBHF		8-19	t R	s	z	1.125	1.250	1.548	2.583	
CBHF		8-20	t R	s	z	1.188	1.313	1.610	2.645	
5/16"		CBHF	10-4	t R	s	z	0.125	0.375	0.749	1.910
	CBHF	10-6	t R	s	z	0.250	0.500	0.874	2.035	
	CBHF	10-8	t R	s	z	0.375	0.625	0.999	2.160	
	CBHF	10-10	t R	s	z	0.500	0.750	1.124	2.285	
	CBHF	10-12	t R	s	z	0.625	0.875	1.249	2.410	
	CBHF	10-14	t R	s	z	0.750	1.000	1.374	2.535	
	CBHF	10-16	t R	s	z	0.875	1.125	1.499	2.660	
	CBHF	10-18	t R	s	z	1.000	1.250	1.624	2.785	
3/8"	CBHF	10-20	t R	s	z	1.125	1.375	1.749	2.910	0.391
	CBHF	12-4	t R	s	z	0.125	0.375	0.934	2.246	
	CBHF	12-6	t R	s	z	0.250	0.500	0.934	2.246	
	CBHF	12-8	t R	s	z	0.375	0.625	1.059	2.371	
	CBHF	12-10	t R	s	z	0.500	0.750	1.184	2.496	
	CBHF	12-12	t R	s	z	0.625	0.875	1.309	2.621	
	CBHF	12-14	t R	s	z	0.750	1.000	1.434	2.746	
	CBHF	12-16	t R	s	z	0.875	1.125	1.559	2.871	
	CBHF	12-18	t R	s	z	1.000	1.250	1.684	2.996	
	CBHF	12-20	t R	s	z	1.125	1.375	1.809	3.121	



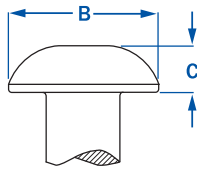
COLLAR



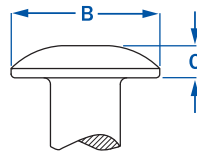
fixed griP COLLAR BOLT

HEADS

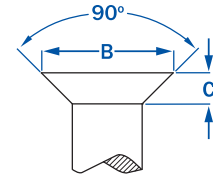
bra Zier head



tr uss head



fl ush head



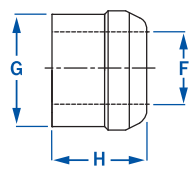
NOM. BODY DIA.	BRAZIER HEAD (BR)		TRUSS HEAD (TR)		FLUSH HEAD (FL)	
	HEAD DIAMETER	HEAD HEIGHT	HEAD DIAMETER	HEAD HEIGHT	HEAD DIAMETER	HEAD HEIGHT
3/16"	.394 - .356	.125 - .113	.469 - .406	.088 - .078	.354 - .328	.085 - .075
1/4"	.525 - .475	.152 - .136	.594 - .531	.115 - .103	.473 - .437	.113 - .101
5/16"	.656 - .594	.201 - .181	.797 - .703	.141 - .127	.589 - .547	.141 - .127
3/8"	.787 - .713	.248 - .223	.922 - .828	.168 - .152	.709 - .656	.168 - .152

MATERIALS

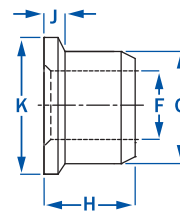
NOM. BODY DIA.		STEEL, ZINC PLATED (SZ)	ALUMINUM 2021 (A2)	ALUMINUM 6061 (A6)	STAINLESS Steel 18-8 (3)
		3/16"	shear	1725	1050
	tensile	1650	1000	530	1455
1/4"	shear	3050	1875	1375	3550
	tensile	3000	1800	975	3750
5/16"	shear	4725	2925	2125	5525
	tensile	4600	2850	1550	4250
3/8"	shear	6825	4200	3050	7950
	tensile	6500	4200	2400	6100

COLLAR DIMENSIONS

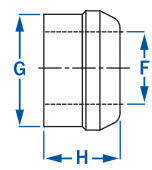
LBC/ZLBC



3LBC



8LBC



COLLAR		HOLE DIAMETER	BODY DIAMETER	OVERALL LENGTH	HEAD HEIGHT	HEAD DIAMETER
stand ard	3/16"	.187 - .196	.311 - .304	.220 - .260		
	1/4"	.256 - .265	.409 - .402	.320 - .290		
	5/16"	.304 - .312	.494 - .485	.380 - .350		
	3/8"	.375 - .385	.600 - .590	.460 - .430		
flange	3/16"	.187 - .196	.311 - .304	.280 - .250	.062 - .031	.391 - .359
	1/4"	.256 - .267	.409 - .402	.379 - .349	.078 - .047	.516 - .484
	5/16"	.304 - .312	.507 - .498	.426 - .394	.094 - .062	.641 - .609
	3/8"	.378 - .390	.610 - .599	.532 - .502	.125 - .062	.781 - .719
low pr ofile	3/16"	.187 - .196	.311 - .304	.162 - .132	0.094	
	1/4"	.256 - .265	.409 - .402	.202 - .172	0.125	
	5/16"	.304 - .312	.494 - .485	.255 - .225	0.125	
	3/8"	.375 - .385	.600 - .590	.295 - .310	0.156	



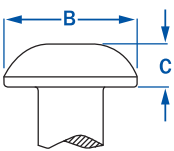
multigrip COLLAR BOLT

GRIPS

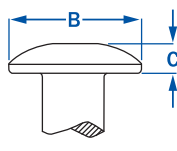
NOM. BODY DIA.	PART NUMBER				GRIP RANGE		LENGTH	MANDREL DIA.	MAX HOLE SIZE
	CATEGORY	SIZE	HEAD	MATERIAL	MIN.	MAX.			
3/16"	MGpB	6 - 10	R	G	0.062	0.625	1.788	.183 - .187	0.203
	MGpB	6 - 20	R	G	0.312	1.250	2.730		
1/4"	MGpB	8 - 10	R	G	0.063	0.625	1.965	.245 - .249	0.265
	MGpB	8 - 20	R	G	0.312	1.250	2.560		
5/16"	MGpB	10 - 12	R	G	0.125	0.750	2.340	.307 - .311	0.328
	MGpB	10 - 22	R	G	0.625	1.375	2.840		
3/8"	MGpB	12 - 14	R	G	0.125	0.875	2.875	.369 - .375	0.390
	MGpB	12 - 26	R	G	0.812	1.625	3.500		

HEADS

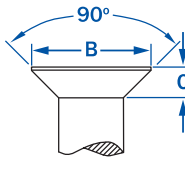
button head



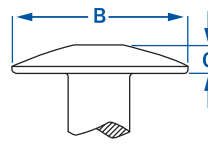
truss head



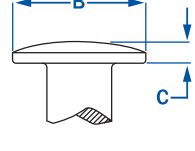
flush head



broad truss head

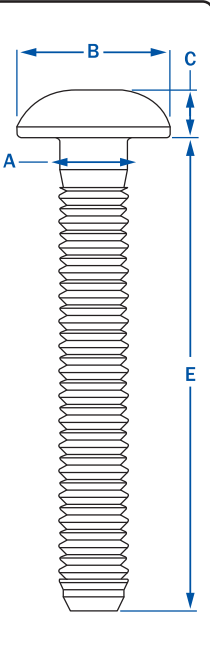


rivet head

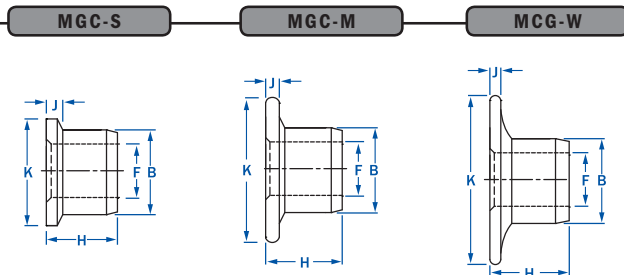


NOM. HEAD DIAMETER	HEAD DIAMETER	BUTTON HEAD (B)		TRUSS HEAD (TR)		FLUSH HEAD (FL)		BROAD TRUSS HEAD		RIVET HEAD	
		HEAD DIAMETER	HEAD HEIGHT	HEAD DIAMETER	HEAD HEIGHT	HEAD DIAMETER	HEAD HEIGHT	HEAD DIAMETER	HEAD HEIGHT	HEAD DIAMETER	HEAD HEIGHT
3/16"	10	.356 - .394	.113 - .125	n/a	n/a	.323 - .359	.092 - .102	n/a	n/a	.450 - .488	.91 - .105
	20	.356 - .394	.113 - .125	n/a	n/a	.323 - .359	.076 - .087	n/a	n/a	.450 - .488	.91 - .105
1/4"	10	.475 - .525	.136 - .152	.531 - .594	.103 - .115	.433 - .478	.119 - .128	**	.138 - .162	n/a	n/a
	20	.475 - .525	.136 - .152	.531 - .594	.103 - .115	.433 - .478	.102 - .115	**	.138 - .162	n/a	n/a
5/16"	12	.594 - .656	.181 - .201	.703 - .797	.127 - .141	.542 - .594	.149 - .162	n/a	n/a	n/a	n/a
	22	.594 - .656	.181 - .201	.703 - .797	.127 - .141	.542 - .594	.129 - .142	n/a	n/a	n/a	n/a
3/8"	14	.713 - .787	.223 - .248	.828 - .922	.152 - .168	.651 - .714	.178 - .195	1.188 - 1.25	.188 - .212	n/a	n/a
	26	.713 - .787	.223 - .248	.828 - .922	.190 - .200	.651 - .714	.153 - .170	1.188 - 1.25	.188 - .212	n/a	n/a

** Steel .937 Aluminum 1.063



COLLAR DIMENSIONS



COLLAR	DIAMETER	HOLE DIAMETER	BODY DIAMETER	OVERALL LENGTH	HEAD HEIGHT	FLANGE DIAMETER
MGC	3/16"	.189 - .195	.307 - .313	.265 - .285	.040 - .052	.365 - .385
	1/4"	.250 - .260	.399 - .405	.360 - .390	.055 - .070	.480 - .520
	5/16"	.312 - .320	.501 - .509	.430 - .446	.069 - .086	.605 - .645
	3/8"	.376 - .384	.603 - .611	.490 - .520	.086 - .100	.730 - .770
MGCs	3/16"	.189 - .195	.308 - .315	.290 - .320	.085 - .115	.495 - .535
MGCw	3/16"	.189 - .195	.307 - .314	.290 - .320	.090 - .115	.640 - .754
	1/4"	.250 - .260	.399 - .405	.432 - .462	.115 - .145	.855 - 1.00

MATERIALS

NOM. BODY DIA.		STEEL (SZ)	ALUMINUM 6061 (A6)
3/16"	shear	1725	750
	tensile	1400	900
1/4"	shear	2200	1200
	tensile	2550	1620
5/16"	shear	3000	2200
	tensile	3910	2500
3/8"	shear	4200	3000
	tensile	5625	4000



cross reference table BY PART NUMBER

(Page 1 of 3)

rivet king®	pop®	marson®	cel us®	ad vel®	gesip a®	
aBa32	ad 32aBs	aB3 - 2a	a/a32d		GaMd 32a	aap 32
aBs32	ad 32Bs	aB3 - 2	a/s32d		GsMd 32a	BSP - 32
aBa34	ad 34aBs	aB3 - 4a	a/a34d		GaMd 34a	aap 34
aBs34	ad 34Bs	aB3 - 4	a/s34d		GsMd 34a	BSP - 34
aBa36	ad 36aBs					
aBa410	ad 410aBs					
aBs410	ad 410Bs	aB4 - 10	a/s410d		GsMd 410a	BSP - 410
aBs41 - 43MGRT	ad 41 - 43Bs			1691 - 0410		
aBs41 - 43I FMGRT	ad 41 - 43Bsl F			1692 - 0410		
aBa41	ad 41aBs	aB4 - 1a	a/a41d		GaMd 41a	aap 41
aBs41	ad 41Bs	aB4 - 1	a/s41d		GsMd 41a	BSP - 41
aBs41Ce	ad 41H	aB4 - 1Cld			GaMd 41aC	
aBa42	ad 42aBs	aB4 - 2a	a/a42d		GaMd 42a	aap 42
aBa42I	ad 42aBsl F	aBl 4 - 2a	a/a42I F		GaMI 42a	aal 42
aBa42Ce	ad 42aH		a42AD - Ce			
aBs42	ad 42Bs	aB4 - 2	a/s42d		GsMd 42a	BSP - 42
aBs42I	ad 42Bsl F	aBl 4 - 2	a/s42I F		GsMI 42a	BSL - 42
aBs42Ce	ad 42H	aB4 - 2Cld	a42D - Ce	sROI - 3265	GsMd 42aC	
aBs43 - 45MGRT	ad 43 - 45Bs			1691 - 0414		
aBs43 - 45I FMGRT	ad 43 - 45Bsl F			1692 - 0414		
aBa43	ad 43aBs	aB4 - 3a	a/a43d		GaMd 43a	aap 43
aBa43Ce	ad 43aH		a43AD - Ce			
aBs43	ad 43Bs	aB4 - 3	a/s43d		GsMd 43a	BSP - 43
aBs43I F	ad 43Bsl F					
aBs43Ce	ad 43H	aB4 - 3Cld	a43D - Ce	sROI - 3280	GsMd 43aC	
aBa44	ad 44aBs	aB4 - 4a	a/a44d		GaMd 44a	aap 44
aBa44I	ad 44aBsl F	aBl 4 - 4a	a/a44I F			aal 44
aBa44Ce	ad 44aH		a44AD - Ce			
aBs44	ad 44Bs	aB4 - 4	a/s44d		GsMd 44a	BSP - 44
aBs44I	ad 44Bsl F	aBl 4 - 4	a/s44I F		GsMI 44a	BSL - 44
aBs44Ce	ad 44H	aB4 - 4Cld	a44D - Ce	sROI - 3295	GsMd 44aC	
aBs45 - 47MGRT	ad 45 - 47Bs			1691 - 0416		
aBa45	ad 45aBs	aB4 - 5a	a/a45d		GaMd 45a	aap 45
aBs45	ad 45Bs	aB4 - 5	a/s45d		GsMd 45a	BSP - 45
aBs45Ce	ad 45H	aB4 - 5Cld	a45D - Ce	sROI - 3211	GsMd 45aC	
aBa46	ad 46aBs	aB4 - 6a	a/a46d		GaMd 46a	aap 46
aBs46	ad 46Bs	aB4 - 6	a/s46d		GsMd 46a	BSP - 46
aBs46Ce	ad 46H		a46D - Ce	sROI - 3212		
aBa48	ad 48aBs	aB4 - 8a	a/a48d		GaMd 48a	aap 48
aBs48	ad 48Bs	aB4 - 8	a/s48d		GMSd 48a	BSP - 48
aBs48Ce	ad 48H					
aBs52 - 54MGRT	ad 52 - 54Bs			1691 - 0512		
aBs52 - 54I FMGRT	ad 52 - 54Bsl F					
aBa52	ad 52aBs	aB5 - 2a	a/a52d		GaMd 52a	aap 52
aBs52	ad 52Bs	aB5 - 2	a/s52d		GsMd 52a	BSP - 52
aBs52Ce	ad 52H	aB5 - 2Cld		sROI - 4080	GsMd 52aC	
aBs53 - 55MGRT	ad 53 - 55Bs			1691 - 0514		
aBs53 - 55I FMGRT	ad 53 - 55Bsl F			1692 - 0514		
aBa53	ad 53aBs	aB5 - 3a	a/a53d		GaMd 53a	aap 53
aBs53	ad 53Bs	aB5 - 3	a/s53d		GsMd 53a	BSP - 53
aBs53Ce	ad 53H	aB5 - 3Cld		sROI - 4095	GsMd 53aC	
aBa54	ad 54aBs	aB5 - 4a	a/a54d		GaMd 54a	aap 54
aBa54I	ad 54aBsl F		a/a54I F			aal 54
aBa54Ce	ad 54aH		a54AD - Ce			
aBs54	ad 54Bs	aB5 - 4	a/s54a		GsMd 54a	BSP - 54
aBs54I F	ad 54Bsl F					
aBs54Ce	ad 55H	aB5 - 5Cld	a54D - Ce	sROI - 4011	GsMd 54aC	
aBa56	ad 56aBs	aB5 - 6a	a/a56d	sROI - 4012	GsMd 55aC	
aBa56I F	ad 56aBsl F				GaMd 56a	aap 56
aBs56	ad 56Bs	aB5 - 6	a/s56d		GsMd 56a	BSP - 56
aBa58	ad 58aBs	aB5 - 8a	a/a58d		GaMd 58a	aap 58
aBa56I	ad 58aBsl F		a/a56I F			aal 56
aBs58	ad 58Bs	aB5 - 8	a/s58d		GsMd 58a	BSP - 58
aBa610	ad 610aBs	aB6 - 10a	a/a610d		GaMd 610a	aap 610
aBa610I	ad 610aBsl F	aB6 - 10a	a/a610I F		GaMI 610a	aal 610
aBs610	ad 610Bs	aB6 - 10	a/s610d		GsMd 610a	Bsp 610
aBs610I	ad 610Bsl F	aBl 6 - 10	a/s610I F		GsMI 610a	Bsl 610
aBa612	ad 612aBs	aB6 - 12a			GaMd 612a	aap 612
aBa612I	ad 612aBsl F	aB6 - 12a	a/a612I F		GaMI 612a	aal 612
aBs612	ad 612Bs	aB6 - 12	a/s612d		GsMd 612a	Bsp 612
aBs612I	ad 612Bsl F	aBl 6 - 12	a/s612I F		GsMI 612a	Bsl 612
aBs614	ad 614Bs					
aBs62 - 64MGRT	ad 61 - 64ss Bs			1663 - 0613		
aBa616	ad 616aBs					
aBs616	ad 616Bs					
aBs616I F	ad 616Bsl F					
taBs6203	ad 6187t FBs				GsMd 63adp	BSPT - 6 - 156
aBs62 - 64MGRT	ad 62 - 64Bs			1691 - 0613		BSPT - 6 - 187
aBs62 - 64I FMGRT	ad 62 - 64Bsl F			1692 - 0613		
aBF62 - 64I FMGRT	ad 62 - 64ss Bsl F			1643 - 0613		
aBa64/st R	ad 6270uG			2774 - 0613	Rv6900 - 6 - 4	BAPV - 64
aBa64I F/st R	ad 6270uGI F					
aBa62	ad 62aBs	aB6 - 2a	a/a62d		GaMd 62a	aap 62
aBa62Ce	ad 62aH		a62AD - Ce			
aBs62	ad 62Bs	aB6 - 2	a/s62d		GsMd 62a	Bsp 62

AVEY® MONOBOLT®, BULBEX®, TLR®, CHERRYWATE, MONOBOLT®, INTERLOCK®, HEMLOCK®, STAVEZ®, AVINOX® AND AVIBULB® ARE REGISTERED TRADEMARKS OF TETRON FASTENING SYSTEMS AND ACCUMUL GLOBAL TECHNOLOGIES INC. L SH® AND ULTRA-GRIP® IS A REGISTERED TRADEMARK OF FEMHART FASTENING TECHNOLOGIES. TRULUB®, MAGMA-TIE®, AUTO-BULB® AND KLIK-LOCK® ARE REGISTERED TRADEMARKS OF ALCOA FASTENING SYSTEMS. CELLUSPLIT® AND TIGERBOLT® ARE REGISTERED TRADEMARKS OF CELUS FASTENERS.

cross reference table BY PART NUMBER

(Page 2 of 3)

rivet king®	pop®	marson®	cel us®	ad vel®	gesip a®	
aBs62Ce	ad62H	aB6-2Clid	a62D-Ce	sROI-4880	GsMd62aC	
aBs63-67MGRt	ad63-66Bs			1691-0619		
aBa67s/st R	ad6437uG			2774-0617	Rv6900-6-7	BAPV-67
aBa67sl F/st R	ad6437uGl F					
aBa67l F/st R	ad6437uGl Fx					
aBa67/st R	ad6437uGx					
aBs63-67MGRt	ad64-68ss Bsl F			1643-0621		
aBa64	ad64aBs	aB6-4a	a/a64d		GaMd64a	aap64
aBa64l	ad64aBsl F		a/a64l F		GaMl64a	aal64
aBa64Ce	ad64aH		a64AD-Ce			
aBs64	ad64Bs	aB6-4	a/s64d		GsMd64a	Bsp64
aBs64l F	ad64Bsl F	aBl6-4	a/s64l F		GsMl64a	Bsl64
				sROI-4895	GsMd63aC	
aBs64Ce	ad64H	aB6-4Clid	a64D-Ce	sROI-4811	GsMd64aC	
aBF66Ce	ad64ss H					BSPT-6-468
						BSPT-6-500
taBs6500	ad6519t FBs				GsMd68adp	
aBs66-69MGRt	ad66-68Bs			1691-0621		
aBs66-69l FMGRt	ad66-68Bsl F			1692-0621		
aBa66	ad66aBs	aB6-6a	a/a66d		GaMd66a	aap66
aBa66l	ad66aBsl F	aB6-6a	a/a66l F		GaMl66a	aal66
aBa66Ce	ad66aH		a66AD-Ce			
aBs66	ad66Bs	aB6-6	a/s66d		GsMd66a	Bsp66
aBs66l	ad66Bsl F	aBl6-6	a/s66l F		GsMl66a	Bsl66
					GsMd65aC	
aBs6Ce	ad66H	aB6-6Clid	a66D-Ce	sROI-4812	GsMd66aC	
aBF66Ce	ad66ss H					
				1691-0631		
aBs610-612MGRt *	ad68-612Bs			1643-0631		
aBF610-612MFGRT *	ad68-612ss Bsl F					
aBa68	ad68aBs	aB6-8a	a/a68d		GaMd68a	aap68
aBa68l	ad68aBsl F	aB6-8a	a/a68l F		GaMl68a	aal68
aBa68Ce	ad68aH		a68AD-Ce			
aBs68	ad68Bs	aB6-8	a/s68d		GsMd68a	Bsp68
aBs68l	ad68Bsl F	aBl6-8	a/s68l F		GsMl68a	Bsl68
				sROI-4814		
aBs68Ce	ad68H	aB6-8Clid	a68D-Ce	sROI-4816	GsMd68aC	
aBs810	ad810Bs		a/s810d		GsMd810a	Bsp810
aBa812	ad812aBs	aB8-12a	a/a812d		GaMd812a	aap812
aBs812	ad812Bs	aB8-12	a/s812d		GsMd812a	Bsp812
aBs816	ad816Bs					
aBa86/st R	ad8375uG			2774-0817	Rv6900-8-6	BAPV-86
aBa86l F/st R	ad8375uGl F					
aBa84	ad84aBs	aB8-4a	a/a84d		GaMd84a	aap84
aBs84	ad84Bs	aB8-4	a/s84d		GsMd84a	Bsp84
aBs84Ce	ad84H	aB8-4Clid				
aBa810s/st R	ad8625uG				Rv6900-8-10	BAPV-810
aBa810sl F/st R	ad8625uGl F					
aBa810l F/st R	ad8625uGl Fx					
aBa810/st R	ad8625uGx			2774-0824	Rv6900-8-10xC	
aBa86	ad86aBs	aB8-6a	a/a86d		GaMd86a	aap86
aBs86	ad86Bs	aB8-6	a/s86d		GsMd86a	Bsp86
aBs86Ce	ad86H	aB8-6Clid				
aBs88	ad88Bs	aB8-8	a/s88d		GsMd88a	
no Equal	ads46aBs					Bsp88
aBL-0516	ads54aBsl			BF01-0516		
aBL-0523	ads58aBsl			BF01-0523		
				BF01-0523		
				BF01-0619		
aBL-0619*	ads64aBsl			BF01-0625		BapK-64
				BF01-0630		
aBL-0625*				BF01-0619		
aBL-0630*	ads66aBs			BF01-0625		BapK-66
aBs66	ads66Bs			BF01-0630		
aCs41-44MG/Rt	aK41-44Bs			1682-0412		
aCs41Ce	aK41H					
aCa42	aK42aBs	aC4-2a	a/a42C		GaMC42a	aaC42
aCs42	aK42Bs	aC4-2	a/s42C		GsMC42a	BsC-42
aCs42Ce	aK42H					
aCs43	aK43Bs	aC4-3	a/s43C		GsMC43a	BsC-43
aCs43Ce	aK43H					
aCs44	aK44Bs	aC4-4	a/s44C		GsMC44a	BsC-44
aCs44Ce	aK44H					
aCs45	aK45Bs					BsC-45
aCs45Ce	aK45H					
aCs53Ce	aK53H					
aCs54	aK54Bs					
aCs56	aK56Bs					
aCa66/st R	aK6331uG					
aCF64-66MG	aK64-66ss Bs					
aCs64	aK64Bs					
aCs64Ce	aK64H					
aCs69/st R	aK6500uG					
aCs66Ce	aK66H					
aCa88/st R	aK8475uG					
aCa812/st R	aK8725uG					

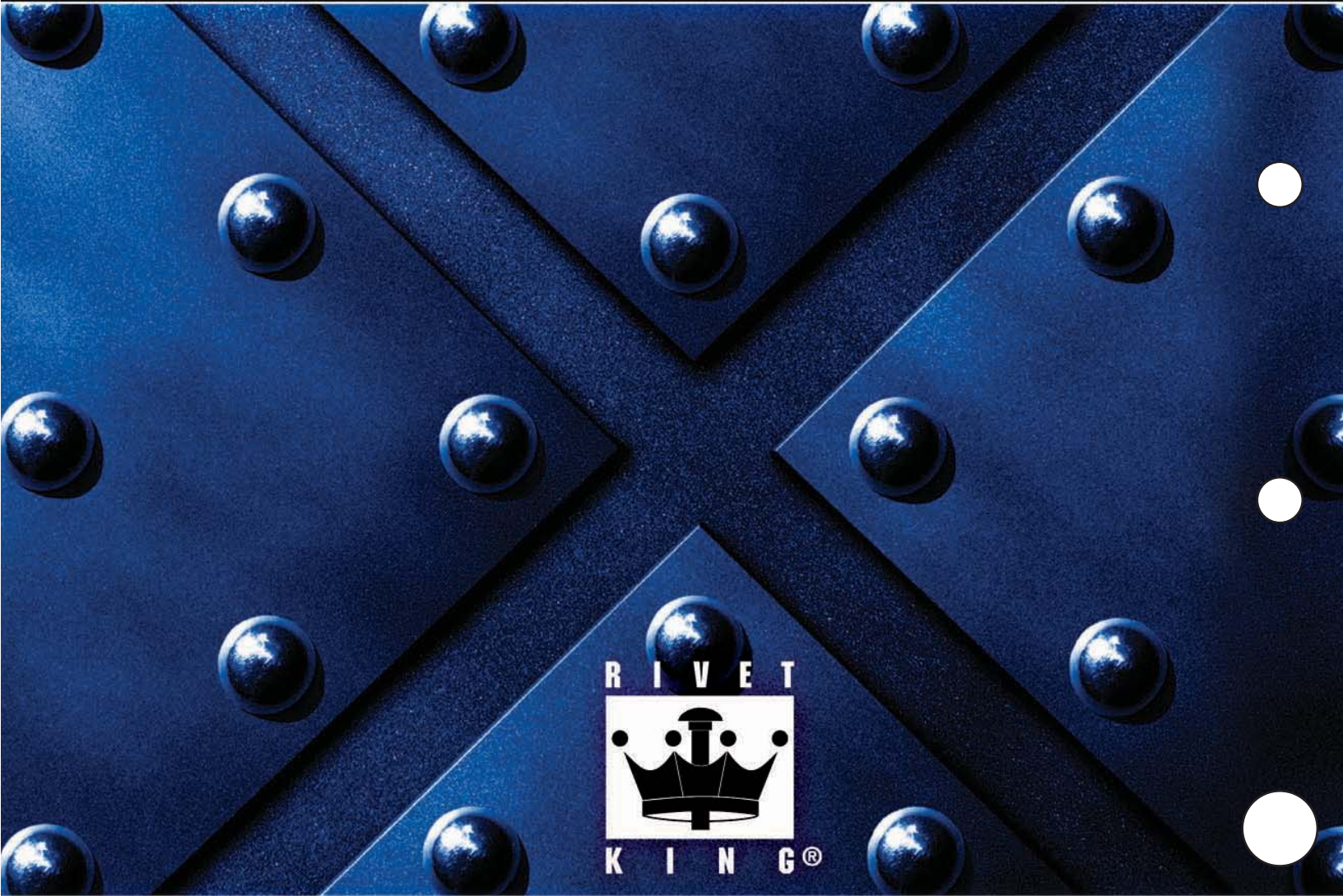
ATEX® MONOROT® RUBER® TIR® CHERMPATE® MONOROT® INTERLOCK® HEMI OR® STRAY® AUNOX® AND AIRBUL® ARE REGISTERED TRADEMARKS OF TETRON FASTENING SYSTEMS AND ACCUMULATOR TECHNOLOGIES, LSH AND ULTRA-GRIP® IS A REGISTERED TRADEMARK OF FENMATT FASTENING TECHNOLOGIES. TRUBUL® MAGNA-TITE®, AUTO-BUL® AND KLIK-LOCK® ARE REGISTERED TRADEMARKS OF ALCOA FASTENING SYSTEMS. CEUSSPLOT® AND TETRORIT® ARE REGISTERED TRADEMARKS OF CEUSS FASTENERS.

cross reference table BY PART NUMBER

(Page 3 of 3)

rivet king®	pop®	marson®	cel us®	ad vel®	gesip a®	
CBs 42	Cd 42Bs	CB4 - 2	C/s 42d		Gs Md 42C	usp 42
CBs 43Ce	Cd 43H					
CBs 44	Cd 44Bs	CB4 - 4	C/s 44d		Gs Md 44C	usp 44
sBs 32	sd 32Bs	sB3 - 2	s/s 32d		Gs Md 32s	ssp 32
sBs 34	sd 34Bs	sB3 - 4	s/s 34d		Gs Md 34s	ssp 34
sBs 41	sd 41Bs	sB4 - 1	s/s 41d		Gs Md 41s	ssp 41
sBs 42	sd 42Bs	sB4 - 2	s/s 42d		Gs Md 42s	ssp 42
sBs 42i F	sd 42Bsl F	sB4 - 2	s/s 42i F		Gs MI 42s	ssl 42
sBs 43	sd 43Bs	sB4 - 3	s/s 43d		Gs Md 43s	ssp 43
sBs 44	sd 44Bs	sB4 - 4	s/s 44d		Gs Md 44s	ssp 44
sBs 44i F	sd 44Bsl F	sB4 - 4	s/s 44i F		Gs MI 44s	ssl 44
sBs 45	sd 45Bs	sB4 - 5	s/s 45d		Gs Md 45s	ssp 45
sBs 46	sd 46Bs	sB4 - 6	s/s 46d		Gs Md 46s	ssp 46
sBs 48	sd 48Bs	sB4 - 8	s/s 48d		Gs Md 48s	ssp 48
sBs 52	sd 52Bs	sB5 - 2	s/s 52d		Gs Md 52s	ssp 52
sBs 53	sd 53Bs	sB5 - 3	s/s 53d		Gs Md 53s	ssp 53
sBs 54	sd 54Bs	sB5 - 4	s/s 54d		Gs Md 54s	ssp 54
sBs 54i F	sd 54Bsl F					
sBs 56	sd 56Bs	sB5 - 6	s/s 56d		Gs Md 56s	ssp 56
sBs 610	sd 610Bs	sB6 - 10	s/s 610d		Gs Md 610	ssp 610
sBs 610i F	sd 610Bsl F	sB6 - 10	s/s 610i F		Gs MI 610s	ssl 610
sBs 612	sd 612Bs	sB6 - 12	s/s 612d		Gs Md 612	ssp 612
sBs 612i F	sd 612Bsl F	sB6 - 12	s/s 612i F		Gs MI 612s	ssl 612
sBs 616	sd 616Bs					
sBs 64/st R	sd 6270uG			2771 - 0613	Rv6977 - 6 - 4	SSPV - 64
sBs 64i F/st R	sd 6270uG F					
sBs 62	sd 62Bs	sB6 - 2	s/s 62d		Gs Md 62s	ssp 62
sBs 67s/st R	sd 6437uG			2771 - 0617	Rv6977 - 6 - 7	SSPV - 67
sBs 67sl F/st R	sd 6437uG F					
sBs 67i F/st R	sd 6437uG Fx					
sBs 67/st R	sd 6437uGx					
sBs 64	sd 64Bs	sB6 - 4	s/s 64d		Gs Md 64s	ssp 64
sBs 64i	sd 64Bsl F		s/s 64i F		Gs MI 64s	ssl 64
sBs 66	sd 66Bs	sB6 - 6	s/s 66d		Gs Md 66s	ssp 66
sBs 66i	sd 66Bsl F	sB6 - 6	s/s 66i F		Gs MI 66s	ssl 66
sBs 68	sd 68Bs	sB6 - 8	s/s 68d		Gs Md 68s	ssp 68
sBs 68i	sd 68Bsl F	sB6 - 8	s/s 68i F		Gs MI 68s	ssl 68
sBs 810	sd 810Bs	sB8 - 10	s/s 810d		Gs Md 810s	ssp 810
sBs 812	sd 812Bs	sB8 - 12	s/s 812d		Gs Md 812s	ssp 812
sBs 816	sd 816Bs					
sBs 86/st R	sd 8375uG			2771 - 0817	Rv6977 - 8 - 6	SSPV - 86
sBs 86i F/st R	sd 8375uG F					
sBs 84	sd 84Bs	sB8 - 4	s/s 84d		Gs Md 84s	ssp 84
sBs 810s/st R	sd 8625uG				Rv6977 - 8 - 10	SSPV - 810
sBs 810sl F/st R	sd 8625uG F					
sBs 810/st R	sd 8625uG Fx					
sBs 810i F/st R	sd 8625uGx			2771 - 0824	Rv6977 - 8 - 10xG	
sBs 86	sd 86Bs	sB8 - 6	s/s 86d		Gs Md 86s	ssp 86
sBs 88	sd 88Bs	sB8 - 8	s/s 88d		Gs Md 88s	ssp 88
sCs 42	sK42Bs	sC4 - 2	s/s 42C		Gs MC42s	ss C42
sCs 44	sK44Bs	sC4 - 4	s/s 44C		Gs MC44s	ss C44
sCs 66/st R	sK6331uG					
sCs 69/st R	sK6500uG					
sCs 88/st R	sK8475uG					
sCs 812/st R	sK8725uG					
FBs 42	ssd 41Bs	ss B4 - 1	ss/s 41d		Gs Md 42ss	Csp 41
FBs 43	ssd 42Bs	ss B4 - 2	ss/s 42d		Gs Md 42ss	Csp 42
FBs 42i F	ssd 42Bsl F		ss/s 42i F			Csl 42
FBF42	ssd 42ss Bs	ss B4 - 2s	ss/s 42d		Gss Md 42ss	CCp42
FBF42i F	ssd 42ss Bsl F					CCI 42
FBs 44	ssd 43Bs	ss B4 - 3	ss/s 43d		Gs Md 43ss	Csp 43
FBs 43i F	ssd 43Bsl F					
FBF43	ssd 43ss Bs	ss B4 - 3s	ss/ss 43d		Gss Md 43ss	CCp43
FBF43i F	ssd 43ss Bsl F					
FBF43Ce	ssd 43ss H					
FBs 46	ssd 44Bs	ss B4 - 4	ss/s 44d		Gs Md 44ss	Csp 44
FBs 44i F	ssd 44Bsl F					Csl 44
FBF44	ssd 44ss Bs	ss B4 - 4s	ss/ss 44d		Gss Md 44ss	CCp44
FBF44i F	ssd 44ss Bsl F					CCI 44
FBs 48	ssd 46Bs	ss B4 - 6	ss/s 46d		Gs Md 46ss	Csp 46
FBF46	ssd 46ss Bs	ss B4 - 6s	ss/ss 46d		Gss Md 46ss	CCp46
FBs 48	ssd 48Bs	ss B4 - 8	ss/s 48d		Gs Md 48ss	Csp 48
FBF48	ssd 48ss Bs	ss B4 - 8s	ss/ss 48d		Gss Md 48ss	CCp48
FBs 52	ssd 52Bs	ss B5 - 2	ss/s 52d		Gs Md 52ss	Csp 52
FBF52	ssd 52ss Bs	ss B5 - 2s	ss/ss 52d		Gss Md 52ss	CCp52
FBF53Ce	ssd 53ss H					
FBs 54	ssd 54Bs	ss B5 - 4	ss/s 54d		Gs Md 54ss	Csp 54
FBF54	ssd 54ss Bs					CCp54
FBs 56	ssd 56Bs	ss B5 - 6	ss/s 56d		Gs Md 56ss	Csp 56
FBF56	ssd 56ss Bs	ss B5 - 6s	ss/ss 56d		Gss Md 56ss	CCp56
FBF64/st R	ssd 6270uG					
FBs 62	ssd 62Bs	ss B6 - 2	ss/s 62d		Gs Md 62ss	Csp 62
FBF62	ssd 62ss Bs	ss B6 - 2s	ss/ss 62d		Gss Md 62ss	CCp62
FBF62Ce	ssd 62ss H					
FBs 64	ssd 64Bs	ss B6 - 4	ss/s 64d		Gs Md 64ss	Csp 64
FBF64	ssd 64ss Bs		ss/ss 64d			CCp64
FBF64Ce	ssd 64ss H		ss 64ssd Ce			
FBs 66	ssd 66Bs	ss B6 - 6	ss/s 66d		Gs Md 66ss	Csp 66
FBF66	ssd 66ss Bs		ss/ss 66d			CCp66
FBs 68	ssd 68Bs	ss B6 - 8	ss/s 68d		Gs Md 68ss	Csp 68
FBF68	ssd 68ss Bs		ss/ss 68d			CCp68
FBF86/st R	ssd 8375uG					
FCF66/st R	ss K6331uG					
FCF88/st R	ss K8475uG					

AVEX® MONOROLT®, BULBEX®, TIR®, CHERRYIMATE®, MONOROLT®, INTERLOCK®, HEMLOCK®, STAVEX®, AVINOX®, AND AVIBULB® ARE REGISTERED TRADEMARKS OF TETRON FASTENING SYSTEMS AND ACCUMET GLOBAL TECHNOLOGIES INC. L SH® AND ULTRA-GRIP® IS A REGISTERED TRADEMARK OF EMHART FASTENING TECHNOLOGIES. TRU-BULB®, MAGNA-TITE®, AUTO-BULB® AND KLIK-LOCK® ARE REGISTERED TRADEMARKS OF ALCOA FASTENING SYSTEMS. CELUSSPLIT® AND TIGERBOLT® ARE REGISTERED TRADEMARKS OF CELUS FASTENERS.



WWW.RIVETKING.COM · WWW.RIVET.COM · 800.289.7483 · 200 PARIS AVENUE, NORTHVALE, NEW JERSEY 07647