

ELOCONE NUTS

Elocone elongated nuts can be used to correct anchor bolts with insufficient projection above the concrete foundation.

These nuts are fabricated by machining a piece of high strength steel to two different sections. The upper section is similar to a standard nut and will bear on the column base or washer plate. The lower section has a smaller smooth diameter and is able to fit an oversized hole of the base plate to screw on enough threads of the anchor rod installed with a short projection.

In order to develop the tension capacity of an anchor made of steel with a tensile strength of 150 ksi (1,035 MPa), the Elocone nuts must be fastened to the anchor rod for a length equal to the diameter of the rod.



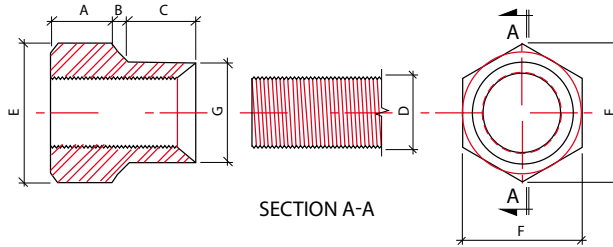
CANAM
BUILDINGS



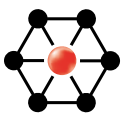
Elocone Extended Nuts Dimensions

Elocone nuts are machined pieces with a standard nut head and an elongated lower part that can be screwed to anchor rods within the thickness of the base plate. Dimensions can change without notice. Elocones nuts can be produced with hot-dip galvanized finish on demand. In addition, the washers for Elocone nuts are sold separately.

Hardness 32-36 HRC
Elocone Steel $F_y = 140$ ksi (965 MPa) app.



Part Number	Anchor Rod Diameter (in.)	Outside diameter of narrow bottom part (in.)	Upper nut length (in.)	Transition length (in.)	Length of narrow bottom part (in.)	Elocone nut overall length (in.)	Dimension across corners of upper nut (in.)	Dimension across flats of upper nut (in.)	Net weight (lbs)	Number of threads per inch and size of threads	Availability
	D	G	A	B	C	A+B+C	E	F			
HBA-0019	0.750	1.000	0.688	0.125	0.688	1.500	1.443	1.250	0.3	10 UNC	Stock
HBA-0041	0.750	1.000	0.688	0.125	1.125	1.938	1.443	1.250	0.4	10 UNC	Order
HBA-0023	0.750	1.000	0.688	0.125	1.438	2.250	1.443	1.250	0.4	10 UNC	Stock
HBA-0040	0.750	1.000	0.688	0.125	2.000	2.813	1.443	1.250	0.5	10 UNC	Order
HBA-0024	0.875	1.180	0.781	0.156	1.000	1.938	1.660	1.438	0.5	9 UNC	Stock
HBA-0020	1.000	1.333	0.917	0.146	1.000	2.063	1.876	1.625	0.7	8 UNC	Stock
HBA-0047	1.000	1.333	0.917	0.146	1.500	2.563	1.876	1.625	0.8	8 UNC	Stock
HBA-0042	1.000	1.333	0.917	0.146	2.000	3.036	1.876	1.625	0.9	8 UNC	Order
HBA-0076	1.000	1.333	0.917	0.146	2.500	3.563	1.876	1.623	1.0	8 UNC	Order
HBA-0027	1.125	1.500	1.000	0.188	1.125	2.313	2.093	1.813	0.9	7 UNC	Stock
HBA-0021	1.250	1.688	1.188	0.188	1.250	2.625	2.309	2.000	1.5	7 UNC	Stock
HBA-0025	1.250	1.688	1.188	0.188	2.250	3.625	2.309	2.000	1.9	7 UNC	Stock
HBA-0026	1.375	1.830	1.233	0.205	1.500	2.938	2.526	2.188	1.7	6 UNC	Stock
HBA-0022	1.500	2.000	1.375	0.188	1.500	3.063	2.742	2.375	2.2	6 UNC	Stock
HBA-0066	1.500	2.000	1.375	0.188	2.000	3.563	2.742	2.375	2.4	6 UNC	Order
HBA-0062	1.750	2.350	1.688	0.178	2.634	4.500	3.125	2.706	5.2	5 UNC	Order
HBA-0049	1.750	2.350	1.688	0.178	4.134	6.000	3.125	2.706	5.2	5 UNC	Order
HBA-0054	2.000	2.690	1.938	0.218	2.345	4.500	3.594	3.125	5.5	4.5 UNC	Order
HBA-0053	2.250	3.020	2.188	0.240	2.573	5.000	4.031	3.500	7.8	4.5 UNC	Order
HBA-0051	2.500	3.360	2.438	0.220	2.843	5.500	4.375	3.800	10.3	4 UNC	Order



CANAM
BUILDINGS

1-855-ELOCONE (356-2663)
canam-construction.com/elocone

Canam, Hambro, Murox as well as all logos identifying the activities of Canam Buildings and Structures Inc., are trademarks of Canam Buildings and Structures Inc.