

the **Crosby**® group

# Hoist Rings

Sizes and Styles for all of your Applications and Requirements

Length between Threads

Diameter (mm)

Length of Bolt (from under head) (mm)



SS-125



HR-500



HR-125C



HR-1000



HR-125  
"The Original"

COIL  
THREAD  
SIZE



HR-100



HR-125W



HR-1200

**"QT"**  
QUENCHED & TEMPERED  
®

**Fatigue Rated**®

Crosby Products Distributed by:

|  |
|--|
|  |
|--|

# Swivel Hoist Ring

Color coded to distinguish between UNC (Red) and Metric (Silver) thread types.



HR-125 M

Load Rated



Fatigue Rated



HR-125

- Available in UNC and Metric thread sizes.
  - UNC threads available in sizes from 800 pounds to 100,000 pounds Working Load Limit, with a design factor of 5 to 1.
  - Metric threads available in sizes from 400kg to 16,900kg and dual rated in both a 4 to 1 and 5 to 1 design factor.
- All Components are Alloy Steel – Quenched and Tempered.
- Rated at 100% at 90° angle.
- 100% individually proof tested to 2-1/2 times the Working Load Limit with certification and Statistically Magnetic Particle inspected. (Can be furnished 100% Magnetic Particle inspected when requested at time of order.)
- Each product has a Product Identification Code (PIC) for material traceability along with a Working Load Limit and the name Crosby or "CG" stamped into it.
- Meets or exceeds all the requirements of ASME B30.26 including identification, ductility, design factor, proof load and temperature requirements. Importantly, these hoist rings meet other critical performance requirements including fatigue life, impact properties and material traceability, not addressed by ASME B30.26.
- 360° swivel and 180° pivot action.
- Fatigue rated to 20,000 cycles at 1-1/2 times the Working Load Limit.
- Individually packaged along with proper application instructions and warning information.
- Bolt is secured with E-clip, threads are grooved. This method allows for easy disassembly and assembly of hoist ring for thorough examination of all components. Replacement kits are available.
- Bolts are individually Proof Tested.
- Multiple Bolt length available to meet specific application requirements.
- Zinc Plated (Yellow Chromate) finish for increased corrosion protection thru 30,000 pounds size.

## TABLE OF CONENTS

|                |    |
|----------------|----|
| HR-125 .....   | 3  |
| HR-125M .....  | 4  |
| HR-1000 .....  | 5  |
| SS-125 .....   | 6  |
| SS-125M .....  | 7  |
| HR-500 .....   | 8  |
| HRN-500.....   | 8  |
| HR-500HG.....  | 8  |
| HR-500TC.....  | 8  |
| HR-500WF.....  | 8  |
| HR-100 .....   | 9  |
| HR-100M .....  | 9  |
| HR-1200 .....  | 10 |
| HR-1200M ..... | 10 |
| HR-125C .....  | 11 |
| HR-125W .....  | 11 |

# UNC Swivel Hoist Rings

Load Rated Fatigue Rated

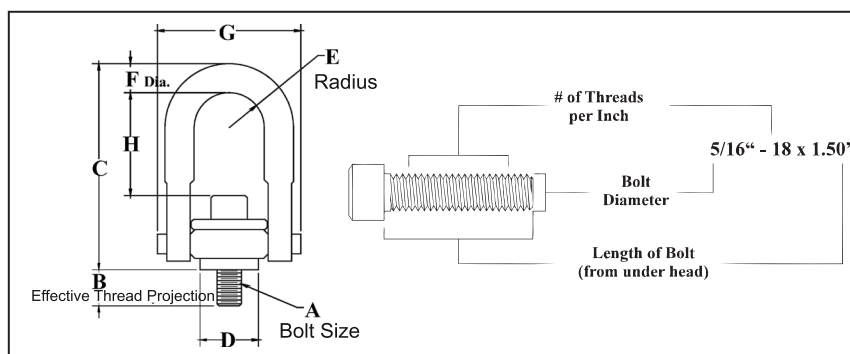


**SEE APPLICATION AND WARNING INFORMATION**  
 Para Español: [www.thecrosbygroup.com](http://www.thecrosbygroup.com) In General Catalog

## HR-125



- Top washer has the following features:
  - The Working Load Limit and Recommended Torque value are permanently stamped into each washer.
  - Washer is color coded for easy identification: Red - UNC thread.
- Individually Proof Tested to 2-1/2 times Working Load Limit.
- Bolt specification is a Grade 8 Alloy socket head cap screw to ASTM A 574. All threads listed are UNC.
- **BOLT SIZE IDENTIFICATION:** The size of the bolt will be stated as in the drawing below. Illustration shows meaning of each dimension given.
- Frame 2 and larger are **RFID EQUIPPED**.



## HR-125 UNC Threads

| Frame Size No. | HR-125 Stock No. | Working Load Limit (lbs.)* | Torque in Ft. Lbs. | Dimensions (in.)   |                                      |       |      |          |            |       |      | Weight Each (lbs.) |
|----------------|------------------|----------------------------|--------------------|--------------------|--------------------------------------|-------|------|----------|------------|-------|------|--------------------|
|                |                  |                            |                    | Bolt Size A ‡      | Effective Thread Projection Length B | C     | D    | Radius E | Diameter F | G     | H    |                    |
| 1 †            | 1016887          | 800                        | 7                  | 5/16 - 18 x 1.50   | .58                                  | 2.72  | .97  | .46      | .34        | 1.87  | 1.12 | .37                |
| 1 †            | 1016898          | 1000                       | 12                 | 3/8 - 16 x 1.50    | .58                                  | 2.72  | .97  | .46      | .34        | 1.87  | 1.05 | .39                |
| 2              | 1016909          | 2500                       | 28                 | 1/2 - 13 x 2.00    | .70                                  | 4.85  | 1.96 | .87      | .69        | 3.35  | 2.29 | 2.33               |
| 2 †            | 1016912          | 2500                       | 28                 | 1/2 - 13 x 2.50    | 1.20                                 | 4.85  | 1.96 | .87      | .69        | 3.35  | 2.29 | 2.36               |
| 2              | 1016920          | 4000                       | 60                 | 5/8 - 11 x 2.00    | .70                                  | 4.85  | 1.96 | .87      | .69        | 3.35  | 2.16 | 2.41               |
| 2 †            | 1016924          | 4000                       | 60                 | 5/8 - 11 x 2.75    | 1.45                                 | 4.85  | 1.96 | .87      | .69        | 3.35  | 2.16 | 2.47               |
| 2              | 1016931          | 5000                       | 100                | 3/4 - 10 x 2.25    | .95                                  | 4.85  | 1.96 | .87      | .69        | 3.35  | 2.04 | 2.52               |
| 2 †            | 1016935          | 5000                       | 100                | 3/4 - 10 x 2.75    | 1.45                                 | 4.85  | 1.96 | .87      | .69        | 3.35  | 2.04 | 2.59               |
| 3              | 1016942          | 7000 **                    | 100                | 3/4 - 10 x 2.75    | .89                                  | 6.57  | 2.96 | 1.36     | .94        | 4.87  | 2.97 | 6.72               |
| 3 †            | 1016946          | 7000 **                    | 100                | 3/4 - 10 x 3.50    | 1.64                                 | 6.57  | 2.96 | 1.36     | .94        | 4.87  | 2.97 | 6.81               |
| 3              | 1016953          | 8000                       | 160                | 7/8 - 9 x 2.75     | .89                                  | 6.57  | 2.96 | 1.36     | .94        | 4.87  | 2.84 | 6.84               |
| 3 †            | 1016957          | 8000                       | 160                | 7/8 - 9 x 3.50     | 1.64                                 | 6.57  | 2.96 | 1.36     | .94        | 4.87  | 2.84 | 6.96               |
| 3              | 1016964          | 10000                      | 230                | 1 - 8 x 3.00       | 1.14                                 | 6.57  | 2.96 | 1.36     | .94        | 4.87  | 2.72 | 7.09               |
| 3 †            | 1016969          | 10000                      | 230                | 1 - 8 x 4.00       | 2.14                                 | 6.57  | 2.96 | 1.36     | .94        | 4.87  | 2.72 | 7.31               |
| 4              | 1016975          | 15000                      | 470                | 1-1/4 - 7 x 4.50   | 2.21                                 | 8.72  | 3.71 | 1.75     | 1.19       | 6.18  | 3.93 | 14.51              |
| 5              | 1016986          | 24000                      | 800                | 1-1/2 - 6 x 6.75   | 2.73                                 | 12.55 | 4.71 | 2.39     | 1.75       | 8.48  | 5.52 | 37.73              |
| 5              | 1016997          | 30000                      | 1100               | 2 - 4-1/2 x 6.75   | 2.73                                 | 12.55 | 4.71 | 2.39     | 1.75       | 8.48  | 5.02 | 40.69              |
| 6              | 1017001          | 50000                      | 2100               | 2-1/2 - 4 x 8.0    | 4.00                                 | 16.88 | 5.75 | 3.00     | 2.25       | 11.00 | 8.03 | 88.00              |
| 7              | 1017005          | 75000                      | 4300               | 3 - 4 x 10.5       | 5.00                                 | 19.50 | 7.25 | 3.75     | 2.75       | 14.16 | 8.50 | 166.00             |
| 8              | 1017009          | 100000                     | 5100               | 3-1/2 - 4 x 13.0 # | 7.00                                 | 22.09 | 7.75 | 4.00     | 3.25       | 15.91 | 9.28 | 265.00             |

\*Ultimate Load is 5 times the Working Load Limit.

\*\* Ultimate Load is 4.5 times the Working Load Limit for 7000# Hoist Ring when tested in 90 degree orientation.

† Long Bolts are designed to be used with soft metal (i.e., aluminum) work piece. While the long bolts may also be used with ferrous metal (i.e., steel & iron) work piece, short bolts are designed for ferrous work pieces only.

‡ Bolt specification is a Grade 8 Alloy socket head cap screw to ASTM A 574.

# Hex head bolt used on Frame 8 (100,000lb.) Hoist Ring.

# Metric Swivel Hoist Rings

Load Rated Fatigue Rated



SEE APPLICATION AND WARNING INFORMATION

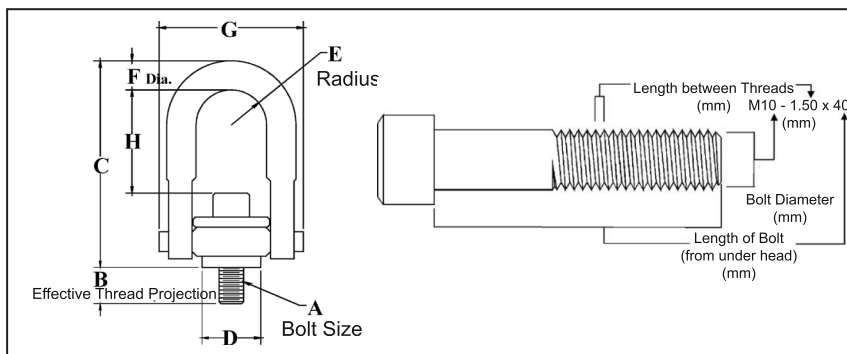
Para Español: [www.thecrosbygroup.com](http://www.thecrosbygroup.com)

In General Catalog

## HR-125M



- Top washer has the following features:
  - The Working Load Limit and Recommended Torque value are permanently stamped into each washer.
  - Washer is color coded for easy identification: Silver - Metric thread.
- Individually Proof Tested to 2-1/2 times Working Load Limit.
- Bolt specification is a Grade 12.9 Alloy socket head cap screw to Din 912. All threads listed are metric (ASME/ANSI B18.3.1m).
- Designed to be used with ferrous work piece only.
- **BOLT SIZE IDENTIFICATION:** The size of the bolt will be stated as in the drawing below. Illustration shows meaning of each dimension given.
- Frame 2 and larger **RFID EQUIPPED**.



## HR-125M Metric Threads

| Frame Size No. | HR-125M Stock No. | Working Load Limit (kg)* |                          | Torque in Nm* | Dimensions (mm) |  |      |      |          |            |      |      | Weight Each (kg) |
|----------------|-------------------|--------------------------|--------------------------|---------------|-----------------|--|------|------|----------|------------|------|------|------------------|
|                |                   | At a 5:1 Design Factor † | At a 4:1 Design Factor † |               | (A) Bolt Size ‡ | (B) Effective Thread Projection Length | C    | D    | Radius E | Diameter F | G    | H    |                  |
| 1              | 1016602           | 400                      | 500                      | 10            | M8X1.25X40      | 16.7                                   | 69.2 | 24.6 | 11.7     | 8.5        | 47.5 | 28.2 | .17              |
| 1              | 1016613           | 450                      | 550                      | 16            | M10X1.50X40     | 16.7                                   | 69.2 | 24.6 | 11.7     | 8.5        | 47.5 | 26.2 | .18              |
| 2              | 1016624           | 1050                     | 1300                     | 38            | M12X1.75X50     | 16.9                                   | 123  | 49.8 | 22.1     | 17.5       | 85.1 | 58.9 | 1.05             |
| 2              | 1016635           | 1900                     | 2400                     | 81            | M16X2.00X60     | 26.9                                   | 123  | 49.8 | 22.1     | 17.5       | 85.1 | 54.9 | 1.11             |
| 2              | 1016644           | 2150                     | 2700                     | 136           | M20X2.50X65     | 31.9                                   | 123  | 49.8 | 22.1     | 17.5       | 85.1 | 50.9 | 1.17             |
| 3              | 1016657           | 3000                     | 3750                     | 136           | M20X2.50X75     | 27.8                                   | 167  | 75.2 | 34.5     | 25.4       | 124  | 74.4 | 3.09             |
| 3              | 1016668           | 4200                     | 5250                     | 312           | M24X3.00X80     | 32.8                                   | 167  | 75.2 | 34.5     | 25.4       | 124  | 70.4 | 3.21             |
| 4              | 1016679           | 7000                     | 8750                     | 637           | M30X3.50X120    | 61.7                                   | 222  | 94.2 | 44.5     | 30.5       | 157  | 101  | 6.53             |
| 5              | 1016690           | 11000                    | 13750                    | 1005          | M36X4.00X150    | 60.3                                   | 316  | 120  | 60.7     | 44.5       | 215  | 145  | 16.8             |
| 5              | 1016701           | 12500                    | 15600                    | 1005          | M42X4.50X160    | 70.3                                   | 316  | 120  | 60.7     | 44.5       | 215  | 139  | 17.4             |
| 5              | 1016712           | 13500                    | 16900                    | 1350          | M48X5.00X160    | 70.3                                   | 316  | 120  | 60.7     | 44.5       | 215  | 133  | 18.0             |

\*The tightening torque values shown are based upon threads being clean, dry and free of lubrication.

† Individually proof loaded to 2-1/2 times the Working Load Limit based on the 4:1 design factor.

‡ Bolt specification is a Grade 12.9 Alloy socket head cap screw to Din 912. All threads are metric (ASME/ANSI B18.3.1m).

# Heavy Lift Swivel Hoist Rings

Load Rated Fatigue Rated



SEE APPLICATION AND WARNING INFORMATION

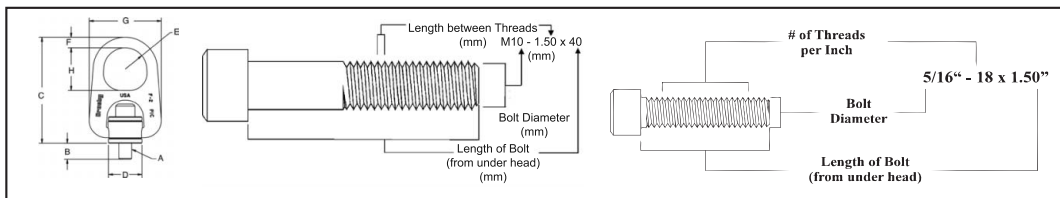
Para Español: [www.thecrosbygroup.com](http://www.thecrosbygroup.com)

In General Catalog

## HR-1000



- Forged bail provides the following:
  - Easily readable "Raised Lettering" showing the name Crosby or "CG" and PIC Code for material traceability.
  - Greater durability providing the increased "Toughness" desired in potentially abusive field conditions.
  - Larger opening than standard Hoist Ring bail.
- Top washer is color coded for easy identification (Red for UNC threads and Silver for Metric threads)
- The Working Load Limit and Recommended Torque value are permanently stamped into each washer.
- Individually Proof Tested to 2-1/2 times Working Load Limit.
- Available in both UNC Thread and Metric Thread style.
- **BOLT SIZE IDENTIFICATION:** The size of the bolt will be stated as in the drawing below. Illustration shows meaning of each dimension given.
- Frame 2 and larger are **RFID EQUIPPED**.



## HR-1000 UNC Threads

| Frame Size No. | HR-1000 Stock No. | Working Load Limit (lbs.)* | Torque in Ft. Lbs.* | Dimensions (in.) |                                 |       |      |          |            |      |      | Weight Each (lbs.) |
|----------------|-------------------|----------------------------|---------------------|------------------|---------------------------------|-------|------|----------|------------|------|------|--------------------|
|                |                   |                            |                     | Bolt Size A ‡    | Eff. Thread Projection Length B | C     | D    | Radius E | Diameter F | G    | H    |                    |
| 1              | 1068002           | 800                        | 7                   | 5/16 - 18 x 1.50 | .52                             | 3.69  | .97  | .62      | .44        | 2.27 | 1.38 | .60                |
| 1              | 1068006           | 1000                       | 12                  | 3/8 - 16 x 1.50  | .52                             | 3.69  | .97  | .62      | .44        | 2.27 | 1.38 | .62                |
| 2              | 1068010           | 2500                       | 28                  | 1/2 - 13 x 2.25  | .69                             | 6.26  | 1.96 | 1.25     | .62        | 4.20 | 2.50 | 3.05               |
| 2 †            | 1068014           | 2500                       | 28                  | 1/2 - 13 x 2.75  | 1.19                            | 6.26  | 1.96 | 1.25     | .62        | 4.20 | 2.50 | 3.07               |
| 2              | 1068018           | 4000                       | 60                  | 5/8 - 11 x 2.25  | .69                             | 6.26  | 1.96 | 1.25     | .62        | 4.20 | 2.50 | 3.11               |
| 2 †            | 1068022           | 4000                       | 60                  | 5/8 - 11 x 3.00  | 1.44                            | 6.26  | 1.96 | 1.25     | .62        | 4.20 | 2.50 | 3.18               |
| 2              | 1068026           | 5000                       | 100                 | 3/4 - 10 x 2.50  | .94                             | 6.26  | 1.96 | 1.25     | .62        | 4.20 | 2.50 | 3.24               |
| 2 †            | 1068030           | 5000                       | 100                 | 3/4 - 10 x 3.00  | 1.44                            | 6.26  | 1.96 | 1.25     | .62        | 4.20 | 2.50 | 3.30               |
| 3              | 1068034           | 7000 **                    | 100                 | 3/4 - 10 x 3.00  | .85                             | 8.66  | 2.96 | 1.63     | 1.00       | 6.25 | 3.25 | 10.09              |
| 3 †            | 1068038           | 7000 **                    | 100                 | 3/4 - 10 x 3.50  | 1.35                            | 8.66  | 2.96 | 1.63     | 1.00       | 6.25 | 3.25 | 10.21              |
| 3              | 1068042           | 8000                       | 160                 | 7/8 - 9 x 3.00   | .85                             | 8.66  | 2.96 | 1.63     | 1.00       | 6.24 | 3.25 | 10.21              |
| 3 †            | 1068046           | 8000                       | 160                 | 7/8 - 9 x 3.50   | 1.35                            | 8.66  | 2.96 | 1.63     | 1.00       | 6.24 | 3.25 | 10.40              |
| 3              | 1068050           | 10000                      | 230                 | 1 - 8 x 3.50     | 1.35                            | 8.66  | 2.96 | 1.63     | 1.00       | 6.24 | 3.25 | 10.50              |
| 3 †            | 1068054           | 10000                      | 230                 | 1 - 8 x 4.50     | 2.35                            | 8.66  | 2.96 | 1.63     | 1.00       | 6.24 | 3.25 | 10.72              |
| 4              | 1068058           | 15000                      | 470                 | 1-1/4 - 7 x 5.00 | 2.09                            | 11.21 | 3.71 | 2.00     | 1.25       | 7.82 | 4.00 | 21.90              |
| 4              | 1068062           | 24000                      | 800                 | 1-1/2 - 6 x 5.50 | 2.59                            | 11.21 | 3.71 | 2.00     | 1.25       | 7.82 | 4.00 | 23.00              |

## HR-1000M Metric Threads

| Frame Size No. | HR-1000M Stock No. | Working Load Limit (kg)*  |                           | Torque in Nm* | Dimensions (mm)  |                                 |      |      |          |            |      |      | Weight Each (kg) |
|----------------|--------------------|---------------------------|---------------------------|---------------|------------------|---------------------------------|------|------|----------|------------|------|------|------------------|
|                |                    | At a 5:1 Design Factor*** | At a 4:1 Design Factor*** |               | Bolt Size A ‡    | Eff. Thread Projection Length B | C    | D    | Radius E | Diameter F | G    | H    |                  |
| 1              | 1068307            | 400                       | 500                       | 10            | M8 x 1.25 x 40   | 15.2                            | 93.7 | 24.6 | 15.7     | 11.2       | 57.7 | 35.1 | .3               |
| 1              | 1068316            | 450                       | 550                       | 16            | M10 x 1.50 x 40  | 15.2                            | 93.7 | 24.6 | 15.7     | 11.2       | 57.7 | 35.1 | .3               |
| 2              | 1068325            | 1050                      | 1300                      | 38            | M12 x 1.75 x 55  | 15.5                            | 162  | 49.8 | 31.8     | 19.1       | 107  | 63.5 | 1.5              |
| 2              | 1068334            | 1900                      | 2400                      | 81            | M16 x 2.00 x 65  | 25.5                            | 162  | 49.8 | 31.8     | 19.1       | 107  | 63.5 | 1.5              |
| 2              | 1068343            | 2150                      | 2700                      | 136           | M20 x 2.50 x 70  | 30.5                            | 162  | 49.8 | 31.8     | 19.1       | 107  | 63.5 | 1.6              |
| 3              | 1068352            | 3000                      | 3750                      | 136           | M20 x 2.50 x 80  | 25.4                            | 220  | 75.2 | 41.4     | 25.4       | 159  | 82.6 | 4.6              |
| 3              | 1068361            | 4200                      | 5250                      | 312           | M24 x 3.00 x 90  | 35.4                            | 220  | 75.2 | 41.4     | 25.4       | 159  | 82.6 | 4.8              |
| 4              | 1068370            | 7000                      | 8750                      | 637           | M30 x 3.50 x 140 | 66.2                            | 285  | 94.2 | 50.8     | 31.8       | 199  | 102  | 9.7              |
| 4              | 1068389            | 11000                     | 13750                     | 1005          | M36 x 4.00 x 130 | 56.2                            | 285  | 94.2 | 50.8     | 31.8       | 199  | 102  | 10.2             |

\* Ultimate Load is 5 times the Working Load Limit.

\*\* Ultimate Load is 4.5 times the Working Load Limit for 7000# Hoist Ring when tested in 90 degree orientation.

\*\*\* Individually proof loaded to 2-1/2 times the Working Load Limit based on the 4:1 design factor. † Long Bolts are designed to be used with soft metal (i.e., aluminum) work piece. While the long bolts may also be used with ferrous metal (i.e., steel & iron) work piece, short bolts are designed for ferrous work pieces only.

‡ Bolt specification is a Grade 8 Alloy socket head cap screw to ASTM A 574. †† Bolt specification is a Grade 12.9 Alloy socket head cap screw to DIN 912.

NOTE: The tightening torque values shown are based upon threads being clean, dry and free of lubrication.

# Stainless Steel Swivel Hoist Rings

**Load Rated** **Fatigue Rated**

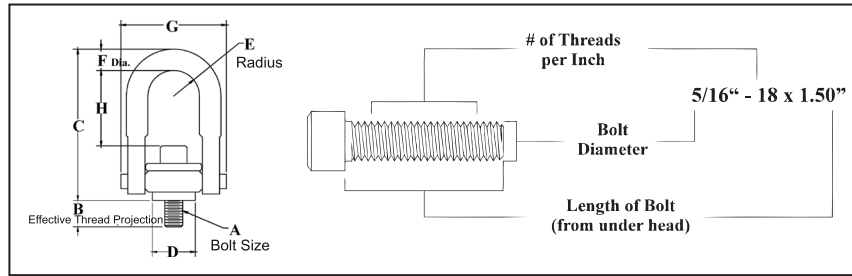


**SEE APPLICATION AND WARNING INFORMATION**  
 Para Español: [www.thecrosbygroup.com](http://www.thecrosbygroup.com) *In General Catalog*

## SS-125



- All components are 316 stainless steel, except bolt retainers, which are made from 15-7 PH (UNS 15700) magnetic stainless steel.
- Available in capacities from 400 lbs. to 25,000 lbs.
- Rated at 100 percent at 90 degree angle.
- Each product has a Product Identification Code (PIC) for material traceability, along with the Working Load Limit and the name Crosby or "CG" stamped into it.
- Individually proof tested to 2 times the Working Load Limit with certification.
- Fatigue Rated to 20,000 cycles at 1-1/2 times the Working Load Limit.
- Washer is color coded for easy identification (Red - UNC thread).
- Bolt specification is 316 Stainless Steel socket head cap screw to ASTM F 837 Group 1 (316). All threads listed are UNC.
- **BOLT SIZE IDENTIFICATION:** The size of the bolt will be stated as in the drawing below. Illustration shows meaning of each dimension given.
- Frame 2 and larger are **RFID EQUIPPED**.



## SS-125 UNC Threads

| Frame Size No. | SS-125 Stock No. | Working Load Limit (lbs.)* | Torque in Ft. Lbs. | Dimensions (in.) |                                      |       |      |          |            |       |      | Weight Each (lbs.) |
|----------------|------------------|----------------------------|--------------------|------------------|--------------------------------------|-------|------|----------|------------|-------|------|--------------------|
|                |                  |                            |                    | Bolt Size A ‡    | Effective Thread Projection Length B | C     | D    | Radius E | Diameter F | G     | H    |                    |
| 1              | 1065000          | 400                        | 3.5                | 5/16 - 18 x 1.0  | .29                                  | 2.67  | .71  | .43      | .34        | 1.84  | 1.27 | .30                |
| 1              | 1065004          | 400                        | 3.5                | 5/16 - 18 x 1.25 | .54                                  | 2.67  | .71  | .43      | .34        | 1.84  | 1.27 | .30                |
| 1              | 1065008          | 500                        | 6                  | 3/8 - 16 x 1.25  | .54                                  | 2.67  | .71  | .43      | .34        | 1.84  | 1.27 | .30                |
| 2              | 1065016          | 1250                       | 14                 | 1/2 - 13 x 2.0   | .78                                  | 4.78  | 1.45 | .88      | .69        | 3.52  | 2.31 | 2.6                |
| 2              | 1065020          | 1250                       | 14                 | 1/2 - 13 x 2.25  | 1.03                                 | 4.78  | 1.45 | .88      | .69        | 3.52  | 2.31 | 2.6                |
| 2              | 1065024          | 1250                       | 14                 | 1/2 - 13 x 2.5   | 1.28                                 | 4.78  | 1.45 | .88      | .69        | 3.52  | 2.31 | 2.6                |
| 2              | 1065028          | 2000                       | 30                 | 5/8 - 11 x 2.0   | .78                                  | 4.78  | 1.45 | .88      | .69        | 3.52  | 2.18 | 2.6                |
| 2              | 1065032          | 2000                       | 30                 | 5/8 - 11 x 2.25  | 1.03                                 | 4.78  | 1.45 | .88      | .69        | 3.52  | 2.18 | 2.6                |
| 2              | 1065036          | 2000                       | 30                 | 5/8 - 11 x 2.5   | 1.28                                 | 4.78  | 1.45 | .88      | .69        | 3.52  | 2.18 | 2.6                |
| 2              | 1065040          | 2500                       | 50                 | 3/4 - 10 x 2.25  | 1.03                                 | 4.78  | 1.45 | .88      | .69        | 3.52  | 2.06 | 3.0                |
| 2              | 1065044          | 2500                       | 50                 | 3/4 - 10 x 2.75  | 1.53                                 | 4.78  | 1.45 | .88      | .69        | 3.52  | 2.06 | 3.0                |
| 3              | 1065048          | 3500                       | 50                 | 3/4 - 10 x 2.75  | 1.04                                 | 6.52  | 2.20 | 1.40     | .94        | 5.14  | 3.06 | 7.0                |
| 3              | 1065052          | 3500                       | 50                 | 3/4 - 10 x 3.25  | 1.54                                 | 6.52  | 2.20 | 1.40     | .94        | 5.14  | 3.06 | 7.0                |
| 3              | 1065056          | 4000                       | 80                 | 7/8 - 9 x 2.75   | 1.04                                 | 6.52  | 2.20 | 1.40     | .94        | 5.14  | 2.93 | 7.0                |
| 3              | 1065060          | 4000                       | 80                 | 7/8 - 9 x 3.0    | 1.29                                 | 6.52  | 2.20 | 1.40     | .94        | 5.14  | 2.93 | 7.0                |
| 3              | 1065064          | 5000                       | 115                | 1 - 8 x 3.0      | 1.29                                 | 6.52  | 2.20 | 1.40     | .94        | 5.14  | 2.81 | 7.5                |
| 3              | 1065068          | 5000                       | 115                | 1 - 8 x 3.25     | 1.54                                 | 6.52  | 2.20 | 1.40     | .94        | 5.14  | 2.81 | 7.5                |
| 3              | 1065072          | 5000                       | 115                | 1 - 8 x 4.0      | 2.29                                 | 6.52  | 2.20 | 1.40     | .94        | 5.14  | 2.81 | 7.5                |
| 4              | 1065080          | 7500                       | 235                | 1-1/4 - 7 x 4.0  | 1.89                                 | 8.73  | 3.19 | 1.75     | 1.25       | 6.50  | 4.12 | 14.0               |
| 5              | 1065084          | 12000                      | 400                | 1-1/2 - 6 x 5.5  | 2.70                                 | 12.47 | 4.87 | 2.25     | 1.75       | 8.55  | 6.41 | 34.0               |
| 5              | 1065088          | 15000                      | 400                | 2 - 4.5 x 5.75   | 2.96                                 | 12.47 | 4.87 | 2.25     | 1.75       | 8.55  | 5.91 | 36.0               |
| 6              | 1065092          | 25000                      | 1050               | 2-1/2 - 4 x 8.0  | 4.00                                 | 16.87 | 6.52 | 3.00     | 2.25       | 11.67 | 8.03 | 88.0               |
| 6              | 1065096          | 25000                      | 1050               | 2-1/2 - 8 x 8.0  | 4.00                                 | 16.87 | 6.52 | 3.00     | 2.25       | 11.67 | 8.03 | 88.0               |
| 7              | 1065100          | 37500                      | 2150               | 3 - 4 x 10.25    | 5.00                                 | 19.50 | 8.10 | 3.75     | 2.75       | 14.15 | 8.48 | 166.0              |
| 8              | 1065104          | 50000                      | 2550               | 3-1/2 - 4 x 13   | 7.00                                 | 22.09 | 8.60 | 4.00     | 3.25       | 15.90 | 9.28 | 265.0              |

\*Ultimate Load is 5 times the Working Load Limit.

‡ Bolt specification is 316 Stainless Steel socket head cap screw to ASTM F 837 Group 1 (316).

# Stainless Steel Swivel Hoist Rings

Load Rated Fatigue Rated



SEE APPLICATION AND WARNING INFORMATION

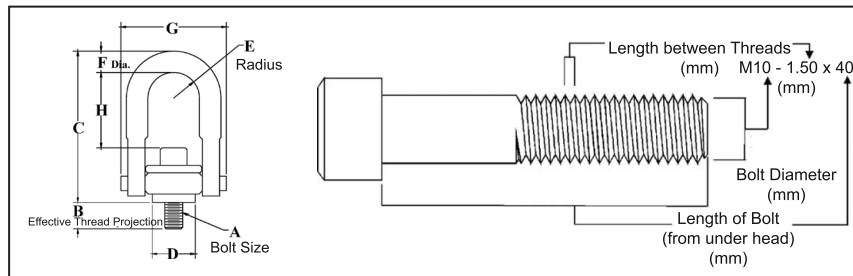
Para Español: [www.thecrosbygroup.com](http://www.thecrosbygroup.com)

In General Catalog

## SS-125M



- All components are 316 stainless steel, except bolt retainers, which are made from 15-7 PH (UNS 15700) magnetic stainless steel.
- Available in capacities from 200 kg. to 22,300 kg.
- Rated at 100 percent at 90 degree angle.
- Each product has a Product Identification Code (PIC) for material traceability, along with the Working Load Limit and the name Crosby or "CG" stamped into it.
- Individually proof tested to 2 times the Working Load Limit with certification.
- Fatigue Rated to 20,000 cycles at 1-1/2 times the Working Load Limit.
- Washer is color coded for easy identification (Silver - UNC thread).
- Bolt specification is 316 Stainless Steel socket head cap screw to ASTM F 837M (316). All threads listed are Metric (ASME/ANSI B18.3.1M).
- **BOLT SIZE IDENTIFICATION:** The size of the bolt will be stated as in the drawing below. Illustration shows meaning of each dimension given.
- Frame 2 and larger are **RFID EQUIPPED**.



## SS-125M Metric Threads

| Frame Size No. | SS-125M Stock No. | Working Load Limit (kg)* | Torque in Nm | Dimensions (mm) |                                      |     |     |          |            |     |     | Weight Each (kg) |
|----------------|-------------------|--------------------------|--------------|-----------------|--------------------------------------|-----|-----|----------|------------|-----|-----|------------------|
|                |                   |                          |              | Bolt Size A ‡   | Effective Thread Projection Length B | C   | D   | Radius E | Diameter F | G   | H   |                  |
| 1              | 1065203           | 200                      | 4            | M8 x 1.25       | 13                                   | 68  | 18  | 11       | 8.5        | 47  | 32  | .17              |
| 1              | 1065207           | 250                      | 8            | M10 x 1.50      | 18                                   | 68  | 18  | 11       | 8.5        | 47  | 30  | .17              |
| 2              | 1065211           | 525                      | 18           | M12 x 1.75      | 19                                   | 121 | 37  | 22       | 17.5       | 89  | 60  | 1.1              |
| 2              | 1065215           | 950                      | 40           | M16 x 2.00      | 29                                   | 121 | 37  | 22       | 17.5       | 89  | 56  | 1.1              |
| 2              | 1065219           | 1075                     | 68           | M20 x 2.50      | 34                                   | 121 | 37  | 22       | 17.5       | 89  | 52  | 1.2              |
| 3              | 1065223           | 1500                     | 68           | M20 x 2.50      | 32                                   | 166 | 56  | 36       | 25         | 131 | 78  | 3.0              |
| 3              | 1065227           | 2100                     | 108          | M24 x 3.00      | 37                                   | 166 | 56  | 36       | 25         | 131 | 74  | 3.1              |
| 3              | 1065231           | 2100                     | 108          | M30 x 3.50      | 58                                   | 206 | 56  | 36       | 25         | 131 | 108 | 3.1              |
| 4              | 1065235           | 3500                     | 318          | M30 x 3.50      | 42                                   | 222 | 81  | 45       | 31         | 165 | 106 | 6.3              |
| 4              | 1065239           | 3500                     | 318          | M30 x 3.50      | 62                                   | 222 | 81  | 45       | 31         | 165 | 106 | 6.4              |
| 5              | 1065243           | 5500                     | 542          | M36 x 4.00      | 64                                   | 317 | 124 | 57       | 43         | 217 | 166 | 15.5             |
| 5              | 1065247           | 6250                     | 542          | M42 x 4.50      | 82                                   | 317 | 124 | 57       | 43         | 217 | 160 | 16.0             |
| 5              | 1065251           | 6750                     | 542          | M48 x 5.00      | 82                                   | 317 | 124 | 57       | 43         | 217 | 154 | 16.8             |
| 6              | 1065255           | 11150                    | 1423         | M64 x 6.00      | 101                                  | 428 | 165 | 76       | 56         | 296 | 204 | 39.0             |
| 7              | 1065259           | 15750                    | 2915         | M72 x 6.00      | 132                                  | 495 | 206 | 95       | 69         | 359 | 220 | 74.0             |
| 8              | 1065263           | 22300                    | 3459         | M90 x 6.00      | 177                                  | 561 | 216 | 102      | 83         | 404 | 235 | 118              |

\* Ultimate Load is 5 times the Working Load Limit.

‡ Bolt specification is 316 Stainless Steel socket head cap screw to ASTM F 837M Group 1 (316).

# Trench Cover Hoist Rings

Load Rated



SEE APPLICATION AND WARNING INFORMATION

Para Español: [www.thecrosbygroup.com](http://www.thecrosbygroup.com)

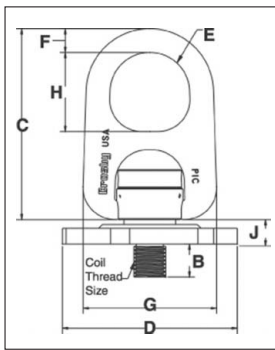
In General Catalog

## HR-500



- Designed to simplify the lifting and placement of steel plates used to cover trenches in streets.
- Provides a standard fitting to be used in place of products not designed for trench cover applications.
- Capacities of 5,000, 10,000 & 15,000 lbs. for plate thicknesses of 3/4" to 1-1/2"
- Detailed welding instructions included with every hoist ring.
- Forged bail provides the following:
  - Easily readable "Raised Lettering" showing the name Crosby or "CG" and PIC code for material traceability.
  - More durability provides the increased "Toughness" desired in potentially abusive field conditions.
- 180 degree pivot and 360 degree rotation at full capacity.
- Design Factor of 5 to 1.
- Individually Proof Tested to 2-1/2 times Working Load Limit.
- All sizes are **RFID EQUIPPED**.

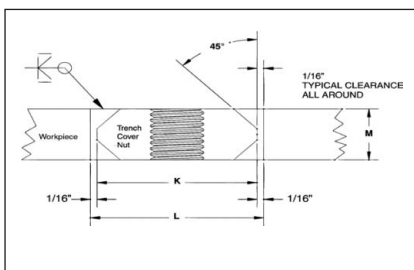
## HRN-500



## HR-500 Trench Cover Hoist Rings – Coil Threads

| HR-500 Stock No. | Working Load Limit (lbs)* | Weight Each (lbs.) | Dimensions (in.)     |                                      |       |      |          |      |      |      |     |
|------------------|---------------------------|--------------------|----------------------|--------------------------------------|-------|------|----------|------|------|------|-----|
|                  |                           |                    | Coil Thread Size "A" | Effective Thread Projection Length B | C     | D    | Radius E | F    | G    | H    | J   |
| 1017907          | 5000                      | 5.6                | 1" - 3.5             | 1.00                                 | 5.90  | 5.50 | 1.25     | .75  | 4.20 | 2.50 | .77 |
| 1017916          | 10000                     | 15.7               | 1-1/4" - 3.5         | 1.00                                 | 8.27  | 7.00 | 1.63     | 1.00 | 6.25 | 3.25 | .81 |
| 1017925          | 15000                     | 29.8               | 1-1/2" - 3.5         | 1.50                                 | 10.63 | 9.13 | 2.00     | 1.25 | 7.82 | 4.00 | .80 |

\* Ultimate Load is 5 times the Working Load Limit.



## HR-500 Trench Cover Nuts

| HRN-500 Stock No. | Working Load Limit (lbs.) | Weight Each (lbs.) | Coil Thread Size | Dimensions (in.) |                             |                   |
|-------------------|---------------------------|--------------------|------------------|------------------|-----------------------------|-------------------|
|                   |                           |                    |                  | Nut Diam. "K"    | Trench Cover Hole Diam. "L" | Nut Thickness "M" |
| 1063405           | 5000                      | 1.2                | 1" - 3.5         | 3.00             | 3.12                        | .75               |
| 1063414           | 5000                      | 1.4                | 1" - 3.5         | 3.00             | 3.12                        | .88               |
| 1063423           | 5000                      | 1.6                | 1" - 3.5         | 3.00             | 3.12                        | 1.00              |
| 1063432           | 10000                     | 1.1                | 1-1/4" - 3.5     | 3.00             | 3.12                        | .75               |
| 1063441           | 10000                     | 1.3                | 1-1/4" - 3.5     | 3.00             | 3.12                        | .88               |
| 1063450           | 10000                     | 1.5                | 1-1/4" - 3.5     | 3.00             | 3.12                        | 1.00              |
| 1063454           | 10000                     | 1.9                | 1-1/4" - 3.5     | 3.00             | 3.12                        | 1.25              |
| 1063458           | 10000                     | 2.3                | 1-1/4" - 3.5     | 3.00             | 3.12                        | 1.50              |
| 1063469           | 15000                     | 2.0                | 1-1/2" - 3.5     | 3.50             | 3.62                        | 1.00              |
| 1063478           | 15000                     | 2.6                | 1-1/2" - 3.5     | 3.50             | 3.62                        | 1.25              |
| 1063487           | 15000                     | 3.1                | 1-1/2" - 3.5     | 3.50             | 3.62                        | 1.50              |



## HR-500HG

## Trench Cover Hoist Ring Tools and Accessories

HR-500HG Hole Gauge – Aids in determining when studs and plate nuts need replacing.

HR-500TC Thread Clean-Up Tool – Cleans dirt and other material from nut threads.

HR-500WF Weld Fixture – Holds nut securely in place to ease in initial tack welding.



## HR-500TC



## HR-500WF

| Coil Thread Size (in.) | HR-500HG Stock No. | Weight Each (lbs.) | HR-500TC Stock No. | Weight Each (lbs.) | HR-500WF Stock N9. | Weight Each (lbs.) |
|------------------------|--------------------|--------------------|--------------------|--------------------|--------------------|--------------------|
| 1.00 - 3.5             | 1064666            | .6                 | 1064639            | 1.2                | 1064602            | 1.8                |
| 1.25 - 3.5             | 1064675            | .8                 | 1064648            | 1.7                | 1064611            | 2.1                |
| 1.50 - 3.5             | 1064684            | 1.0                | 1064657            | 1.9                | 1064620            | 2.5                |



# Pivot Hoist Rings

Load Rated

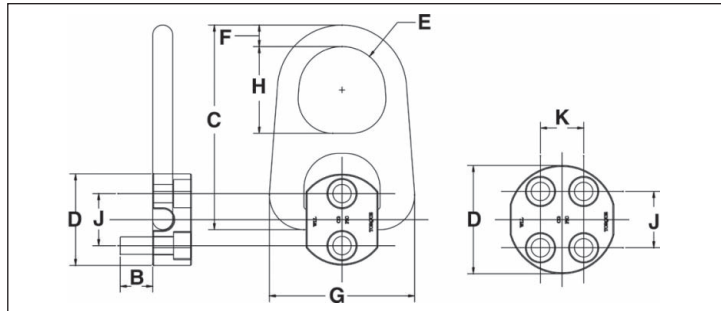


**SEE APPLICATION AND WARNING INFORMATION**  
 Para Español: [www.thecrosbygroup.com](http://www.thecrosbygroup.com) In General Catalog

HR-100 – UNC  
 HR-100M – METRIC



- Forged bail provides the following:
  - Easily readable “Raised Lettering” showing the name Crosby or “CG” and PIC code for material traceability.
  - More durability provides the increased “Toughness” desired in potentially abusive field conditions.
  - Larger opening than standard Hoist Ring bails.
- 180 degree pivot action at full capacity.
- Bolts included as part of assembly.
- Design Factor of 5 to 1.
- Individually Proof Tested to 2-1/2 times Working Load Limit.
- UNC Bolt specification is a Grade 8 Alloy socket head cap screw to ASTM A 574.
- Metric Bolt specification is a Grade 12.9 Alloy socket head cap screw to DIN 912.
- Frame 2 and larger are **RFID EQUIPPED**.



## HR-100 Pivot Hoist Rings – UNC Threads

| Frame Size No. | HR-100 Stock No. | Working Load Limit (lbs)* | Torque in Ft-Lbs. | No. of Bolts | Weight Each (lbs.) | Dimensions (in.) |                                      |       |            |          |      |      |      |      |      |
|----------------|------------------|---------------------------|-------------------|--------------|--------------------|------------------|--------------------------------------|-------|------------|----------|------|------|------|------|------|
|                |                  |                           |                   |              |                    | Bolt Size "A"    | Effective Thread Projection Length B | C     | Diameter D | Radius E | F    | G    | H    | J    | K    |
| 1              | 1067408          | 2000                      | 7                 | 2            | .6                 | 5/16-18 x 1.25   | .82                                  | 3.43  | 2.00       | .62      | .44  | 2.27 | 1.38 | 1.00 | -    |
| 2              | 1067417          | 2500                      | 12                | 2            | 3.1                | 3/8-16 x 1.25    | .65                                  | 6.03  | 2.25       | 1.25     | .75  | 4.20 | 2.50 | 1.13 | -    |
| 2              | 1067426          | 5000                      | 28                | 2            | 3.3                | 1/2-13 x 2.00    | 1.40                                 | 6.03  | 2.63       | 1.25     | .75  | 4.20 | 2.50 | 1.50 | -    |
| 3              | 1067435          | 12000                     | 28                | 4            | 10.5               | 1/2-13 x 2.75    | 1.65                                 | 8.27  | 3.13       | 1.63     | 1.00 | 6.25 | 3.25 | 1.63 | 1.25 |
| 4              | 1067444          | 20000                     | 60                | 4            | 22.0               | 5/8-11 x 3.25    | 1.65                                 | 10.63 | 4.47       | 2.00     | 1.25 | 7.82 | 4.00 | 2.06 | 1.25 |

\* Ultimate Load is 5 times the Working Load Limit.

## HR-100M Pivot Hoist Rings – Metric Threads

| Frame Size No. | HR-100M Stock No. | Working Load Limit (kg)* | Torque in Nm | No. of Bolts | Weight Each (kg.) | Dimensions (mm) |                                      |      |            |          |      |      |      |      |      |
|----------------|-------------------|--------------------------|--------------|--------------|-------------------|-----------------|--------------------------------------|------|------------|----------|------|------|------|------|------|
|                |                   |                          |              |              |                   | Bolt Size "A"   | Effective Thread Projection Length B | C    | Diameter D | Radius E | F    | G    | H    | J    | K    |
| 1              | 1067905           | 900                      | 10           | 2            | .3                | M8-125 x 30     | 19.1                                 | 87.1 | 51.0       | 15.8     | 11.2 | 57.7 | 35.1 | 25.4 | -    |
| 2              | 1067914           | 1150                     | 16           | 2            | 1.4               | M10-150 x 30    | 14.8                                 | 153  | 57.2       | 31.8     | 19.1 | 107  | 63.5 | 28.6 | -    |
| 2              | 1067923           | 2150                     | 38           | 2            | 1.5               | M12-175 x 50    | 34.8                                 | 153  | 66.8       | 31.8     | 19.1 | 107  | 63.5 | 38.1 | -    |
| 3              | 1067932           | 5100                     | 38           | 4            | 4.8               | M12-175 x 70    | 42.1                                 | 210  | 79.5       | 41.4     | 25.4 | 159  | 82.6 | 41.3 | 31.8 |
| 4              | 1067941           | 9000                     | 81           | 4            | 10.0              | M16-200 x 80    | 39.4                                 | 270  | 114        | 51.0     | 31.8 | 199  | 102  | 52.4 | 31.8 |

\* Ultimate Load is 5 times the Working Load Limit.

# Side Pull Hoist Rings

Load Rated



Para Español: [www.thecrosbygroup.com](http://www.thecrosbygroup.com)

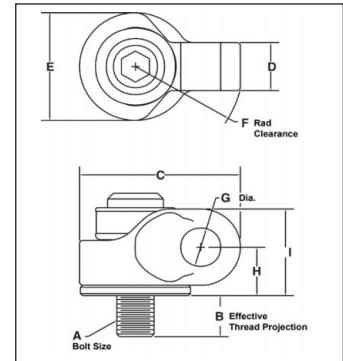
**SEE APPLICATION AND WARNING INFORMATION**

*In General Catalog*

## HR-1200



- Wide range of capacities available:
  - 650 lbs. to 29,000 lbs.
  - Metric sizes from 0.3 tonnes to 13 tonnes.
- Body components are Alloy Steel - Quenched and Tempered.
- Rated at 100% of Working Load Limit for angles up to 90 degrees.
- Each product is stamped with a Product Identification Code (PIC), for material traceability, along with a Working Load Limit, and the name Crosby or "CG".
- Hoist Ring body is furnished with Yellow Chromate finish for improved corrosion resistance.
- Utilize standard Crosby Red Pin® Shackles to connect to wire rope or synthetic slings. (sold separately)
- Multiple bolt lengths available to meet specific application requirements.
- Individually Proof Tested to 2-1/2 times Working Load Limit.
- All sizes are **RFID EQUIPPED**.



## HR-1200 UNC Side Pull Hoist Rings

| Weight Each (lbs.) | Working Load Limit (lbs.)* | HR-1200 Stock No. | Hoist Ring Bolt Torque (Ft.Lbs.) | (A) Bolt Size | (B) Eff. Thread Proj. (in.) | Dimensions (in) |      |      |      |        |      |      | Recommended Shackles                         |                  |                            |              |
|--------------------|----------------------------|-------------------|----------------------------------|---------------|-----------------------------|-----------------|------|------|------|--------|------|------|--|------------------|----------------------------|--------------|
|                    |                            |                   |                                  |               |                             | C               | D    | E    | F    | Dia. G | H    | I    | Red Pin® Shackles 209,210,213, 215,2130,2150 |                  | Red Pin Web Shackles S-281 |              |
|                    |                            |                   |                                  |               |                             |                 |      |      |      |        |      |      | Nominal Size (in.)                           | WLL (t)          | Web Size (in.)             | WLL (Tons)   |
| .35                | 650                        | 1067700           | 7                                | 5/16-18x1.50  | .59                         | 1.93            | .72  | 1.00 | 1.56 | .80    | .85  | 1.25 | 1/2, 5/8                                     | 2, 3-1/4         | 2                          | 3-1/4        |
| .36                | 800                        | 1067704           | 12                               | 3/8-16x1.50   | .59                         | 1.93            | .72  | 1.00 | 1.56 | .80    | .85  | 1.25 | 1/2, 5/8                                     | 2, 3-1/4         | 2                          | 3-1/4        |
| 1.4                | 2000                       | 1067708           | 28                               | 1/2-13x2.00   | .71                         | 2.97            | .97  | 2.00 | 2.13 | .93    | 1.07 | 1.79 | 5/8, 3/4                                     | 3-1/4, 4-3/4     | 2, 1.5                     | 3-1/4, 4-1/2 |
| 1.4                | 2000                       | 1067712           | 28                               | 1/2-13x2.50   | 1.21                        | 2.97            | .97  | 2.00 | 2.13 | .93    | 1.07 | 1.79 | 5/8, 3/4                                     | 3-1/4, 4-3/4     | 2, 1.5                     | 3-1/4, 4-1/2 |
| 1.5                | 3000                       | 1067716           | 60                               | 5/8-11x2.00   | .71                         | 2.97            | .97  | 2.00 | 2.13 | .93    | 1.07 | 1.79 | 5/8, 3/4                                     | 3-1/4, 4-3/4     | 2, 1.5                     | 3-1/4, 4-1/2 |
| 1.5                | 3000                       | 1067720           | 60                               | 5/8-11x2.75   | 1.46                        | 2.97            | .97  | 2.00 | 2.13 | .93    | 1.07 | 1.79 | 5/8, 3/4                                     | 3-1/4, 4-3/4     | 2, 1.5                     | 3-1/4, 4-1/2 |
| 4.5                | 5000                       | 1067724           | 100                              | 3/4-10x2.75   | .90                         | 4.32            | 1.34 | 3.00 | 3.00 | 1.07   | 1.35 | 2.42 | 7/8  | 6-1/2            | 2                          | 6-1/4        |
| 4.6                | 5000                       | 1067728           | 100                              | 3/4-10x3.50   | 1.65                        | 4.32            | 1.34 | 3.00 | 3.00 | 1.07   | 1.35 | 2.42 | 7/8  | 6-1/2            | 2                          | 6-1/4        |
| 4.6                | 6500                       | 1067732           | 160                              | 7/8-9x2.75    | .90                         | 4.32            | 1.34 | 3.00 | 3.00 | 1.07   | 1.35 | 2.42 | 7/8  | 6-1/2            | 2                          | 6-1/4        |
| 4.8                | 6500                       | 1067736           | 160                              | 7/8-9x3.50    | 1.65                        | 4.32            | 1.34 | 3.00 | 3.00 | 1.07   | 1.35 | 2.42 | 7/8  | 6-1/2            | 2                          | 6-1/4        |
| 4.8                | 8000                       | 1067740           | 230                              | 1-8x3.00      | 1.15                        | 4.32            | 1.34 | 3.00 | 3.00 | 1.07   | 1.35 | 2.42 | 7/8  | 6-1/2            | 2                          | 6-1/4        |
| 5.0                | 8000                       | 1067744           | 230                              | 1-8x4.00      | 2.15                        | 4.32            | 1.34 | 3.00 | 3.00 | 1.07   | 1.35 | 2.42 | 7/8  | 6-1/2            | 2                          | 6-1/4        |
| 10.2               | 14000                      | 1067748           | 470                              | 1-1/4-7x4.5   | 2.22                        | 5.59            | 1.57 | 3.75 | 3.91 | 1.47   | 1.92 | 3.42 | 1, 1-1/8, 1-1/4                              | 8-1/2, 9-1/2, 12 | 3                          | 8-1/2        |
| 23.5               | 17200                      | 1067756           | 800                              | 1-1/2-6x6.5   | 2.98                        | 7.31            | 2.06 | 4.75 | 5.19 | 2.11   | 2.41 | 4.29 | 1-3/8, 1-1/2, 1-3/4                          | 13-1/2, 17, 25   | -                          | -            |
| 25.3               | 29000                      | 1067764           | 1100                             | 2-4.5x6.5     | 2.98                        | 7.31            | 2.06 | 4.75 | 5.19 | 2.11   | 2.41 | 4.29 | 1-3/8, 1-1/2, 1-3/4                          | 13-1/2, 17, 25   | -                          | -            |

\* Ultimate Load is 5 times the Working Load Limit.

## HR-1200M Metric Side Pull Hoist Rings

| Weight Each (kg) | Working Load Limit (kg)* | HR-1200M Stock No. | Hoist Ring Bolt Torque (Nm.) | (A) Bolt Size | (B) Eff. Thread Proj. (mm) | Dimensions (mm) |      |      |      |      |      |      | Recommended Shackles                         |                  |                            |              |
|------------------|--------------------------|--------------------|------------------------------|---------------|----------------------------|-----------------|------|------|------|------|------|------|--|------------------|----------------------------|--------------|
|                  |                          |                    |                              |               |                            | C               | D    | E    | F    | G    | H    | I    | Red Pin® Shackles 209,210,213, 215,2130,2150 |                  | Red Pin Web Shackles S-281 |              |
|                  |                          |                    |                              |               |                            |                 |      |      |      |      |      |      | Nominal Size (in.)                           | WLL (t)          | Web Size (in.)             | WLL (Tons)   |
| .18              | 300                      | 1067803            | 10                           | M8x1.25x40    | 16.9                       | 49.0            | 18.3 | 25.4 | 39.6 | 20.3 | 21.6 | 36.3 | 1/2, 5/8                                     | 2, 3-1/4         | 2                          | 3-1/4        |
| .18              | 400                      | 1067807            | 16                           | M10x1.50x40   | 16.9                       | 49.0            | 18.3 | 25.4 | 39.6 | 20.3 | 21.6 | 36.3 | 1/2, 5/8                                     | 2, 3-1/4         | 2                          | 3-1/4        |
| .63              | 1000                     | 1067811            | 38                           | M12x1.75x50   | 17.2                       | 75.4            | 24.6 | 50.8 | 54.1 | 23.6 | 27.2 | 45.5 | 5/8, 3/4                                     | 3-1/4, 4-3/4     | 2, 1.5                     | 3-1/4, 4-1/2 |
| .68              | 1400                     | 1067815            | 81                           | M16x2.0x60    | 27.2                       | 75.4            | 24.6 | 50.8 | 54.1 | 23.6 | 27.2 | 45.5 | 5/8, 3/4                                     | 3-1/4, 4-3/4     | 2, 1.5                     | 3-1/4, 4-1/2 |
| 2.0              | 2250                     | 1067823            | 136                          | M20x2.5x75    | 28.1                       | 110             | 34.0 | 76.2 | 76.2 | 27.2 | 34.4 | 61.5 | 7/8  | 6-1/2            | 2                          | 6-1/4        |
| 2.2              | 3500                     | 1067827            | 312                          | M24x3.0x80    | 33.1                       | 110             | 34.0 | 76.2 | 76.2 | 27.2 | 34.4 | 61.5 | 7/8  | 6-1/2            | 2                          | 6-1/4        |
| 4.5              | 6250                     | 1067831            | 637                          | M30x3.5x120   | 65.1                       | 142             | 39.9 | 95.3 | 99.3 | 37.3 | 48.8 | 86.9 | 1, 1-1/8, 1-1/4                              | 8-1/2, 9-1/2, 12 | 3                          | 8-1/2        |
| 10.4             | 7750                     | 1067835            | 1005                         | M36x4.0x150   | 60.6                       | 186             | 52.3 | 121  | 132  | 53.6 | 61.2 | 109  | 1-3/8, 1-1/2, 1-3/4                          | 13-1/2, 17, 25   | -                          | -            |
| 10.7             | 10000                    | 1067839            | 1005                         | M42x4.5x160   | 70.6                       | 186             | 52.3 | 121  | 132  | 53.6 | 61.2 | 109  | 1-3/8, 1-1/2, 1-3/4                          | 13-1/2, 17, 25   | -                          | -            |
| 11.0             | 13000                    | 1067843            | 1350                         | M48x5.0x160   | 70.6                       | 186             | 52.3 | 121  | 132  | 53.6 | 61.2 | 109  | 1-3/8, 1-1/2, 1-3/4                          | 13-1/2, 17, 25   | -                          | -            |

\* Ultimate Load is 5 times the Working Load Limit.

# Hoist Rings to Chain or Webbing

Load Rated



SEE APPLICATION AND WARNING INFORMATION

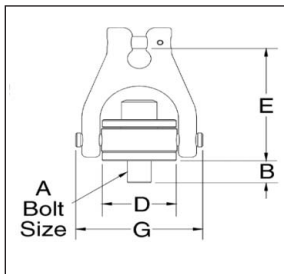
Para Español: [www.thecrosbygroup.com](http://www.thecrosbygroup.com)

In General Catalog

## HR-125C



- Available in capacities from 4,500 lbs. to 18,100 lbs.
- Fits Grade 8 Chain size 1/4" (5/16"), 3/8", 1/2", & 5/8".
- Forged Alloy Steel.
- Design factor of 4 to 1.
- Individually Proof Tested to 2-1/2 times Working Load Limit.
- "Yellow Chromate" finish for increased corrosion protection.
- Full 360 degrees swivel and 180 degrees pivot action.
- Bolt specification is a Grade 8 Alloy socket head cap screw to ASTM A574. All threads are UNC.
- All sizes are **RFID EQUIPPED**.



### HR-125C Hoist Ring to Chain

| HR-125C Stock No. | Working Load Limit (lbs.)* | Torque in Ft.-Lbs. | Effective Thread Projection Length | Spectrum 8 Chain Size (in. - mm) | Dimensions (in.) |      |      |      |      | Weight Each (lbs.) |
|-------------------|----------------------------|--------------------|------------------------------------|----------------------------------|------------------|------|------|------|------|--------------------|
|                   |                            |                    |                                    |                                  | A ‡              | B    | D    | E    | G    |                    |
| 1067492           | 4500                       | 60                 | .71                                | 1/4-5/16 7-8                     | 5/8-11 x 2.00    | .70  | 1.96 | 3.55 | 3.35 | 2.1                |
| 1067494           | 4500                       | 60                 | 1.46                               | 1/4-5/16 7-8                     | 5/8-11 x 2.75    | 1.20 | 1.96 | 3.55 | 3.35 | 2.1                |
| 1067500           | 7100                       | 100                | .90                                | 3/8 10                           | 3/4-10 x 2.75    | .89  | 2.96 | 4.78 | 4.87 | 5.4                |
| 1067502           | 7100                       | 100                | 1.65                               | 3/8 10                           | 3/4-10 x 3.50    | 1.64 | 2.96 | 4.78 | 4.87 | 5.4                |
| 1067509           | 12000                      | 230                | 1.15                               | 1/2 13                           | 1-8 x 3.00       | 1.14 | 2.96 | 4.81 | 4.87 | 6.4                |
| 1067511           | 12000                      | 230                | 2.15                               | 1/2 13                           | 1-8 x 4.00       | 2.14 | 2.96 | 4.81 | 4.87 | 6.7                |
| 1067518           | 18100                      | 470                | 2.22                               | 5/8 16                           | 1-1/4-7 x 4.50   | 2.21 | 3.71 | 6.53 | 6.18 | 12.8               |

\* Ultimate load is 4 times the Working Load Limit. Individually tested to 2-1/2 the Working Load Limit.

‡ Long Bolts are designed to be used with soft metal (i.e., aluminum) work piece. While the long bolts may also be used with ferrous metal (i.e., steel & iron) work piece, short bolts are designed for ferrous work pieces only.

Load Rated

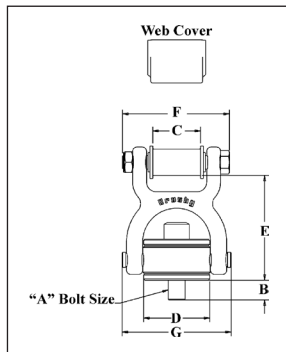


## HR-125W



U.S. Patent No. 5,927,780

- Available in capacities from 6,200 to 12,400 lbs.
- Fits webbing sizes 2" to 4".
- Forged Alloy Steel.
- Durable plastic cover protects the sling at the eye as well as keeps the sling positioned correctly on the spool.
- Bolt specification is a Grade 8 Alloy socket head cap screw to ASTM A574. All threads are UNC.
- Design Factor of 5 to 1.
- Individually Proof Tested to 2-1/2 times the Working Load Limit.
- Designed for use with Type III (Eye & Eye), class 7, 2 ply webbing & synthetic round slings. Also accommodates single ply endless slings.
- All sizes are **RFID EQUIPPED**.

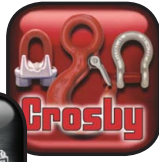


### HR-125W Hoist Ring to Web

| HR-125W Stock No. | Round Sling Size (No.) | Web Width (in.) | Eye Width (in.) | Working Load Limit (lbs.)* | Torque in Ft.-lbs. | Eff. Thread Proj. Length (in.) | Spool bolt & nut Torque in Ft.-Lbs. | Dimensions (in.) |      |      |      |      |      | Weight Each (lbs.) |      |
|-------------------|------------------------|-----------------|-----------------|----------------------------|--------------------|--------------------------------|-------------------------------------|------------------|------|------|------|------|------|--------------------|------|
|                   |                        |                 |                 |                            |                    |                                |                                     | A ‡              | B    | C    | D    | E    | F    |                    | G    |
| 1067610           | 1 & 2                  | 2               | 2               | 6200                       | 100                | .90                            | 90                                  | 3/4-10x2.75      | .89  | 2.13 | 2.96 | 4.75 | 4.77 | 4.87               | 6.2  |
| 1067615           | 1 & 2                  | 2               | 2               | 6200                       | 100                | 1.65                           | 90                                  | 3/4-10x3.5       | 1.64 | 2.13 | 2.96 | 4.75 | 4.77 | 4.87               | 6.3  |
| 1067629           | 3                      | 3               | 1.5             | 8900                       | 230                | 1.15                           | 110                                 | 1-8x3.0          | 1.14 | 1.63 | 2.96 | 4.77 | 4.54 | 4.87               | 7.1  |
| 1067634           | 3                      | 3               | 1.5             | 8900                       | 230                | 2.15                           | 110                                 | 1-8x4.0          | 2.14 | 1.63 | 2.96 | 4.77 | 4.54 | 4.87               | 7.3  |
| 1067638           | 4                      | 4               | 2               | 12400                      | 470                | 2.22                           | 130                                 | 1-1/4-7x4.5      | 2.21 | 2.13 | 3.71 | 6.24 | 4.31 | 6.18               | 13.7 |

\* Ultimate load is 5 times the Working Load Limit. Individually tested to 2-1/2 times the Working Load Limit.

‡ Long Bolts are designed to be used with soft metal (i.e., aluminum) work piece. While the long bolts may also be used with ferrous metal (i.e., steel & iron) work piece, short bolts are designed for ferrous work pieces only.



# the Crosby<sup>®</sup> group

**ap·peal** \ə-ˈpēl\ n [ME *appel*, fr. AF *apel*, fr. *apeler*]  
**1:** to be especially attractive, pleasing, interesting, or enjoyable: The Crosby Group appeals to me...

## The Crosby appeal...

*“One of many value added features that helps make Crosby so appealing is our ongoing commitment to utilize the latest technology in order to provide the information required to ensure the proper application of our products.”*



Scan our QR Code with your smart device to visit the App Store<sup>®</sup>



Some of our most popular value added reference guides are now mobile.



Each app tool offers special enhancements and features that are easy to use and user friendly. Check out all the new Crosby apps ready for download at the App Store<sup>®</sup> today.

APP STORE is a registered trademark of Apple Inc. Application availability and pricing are subject to change. Some features require iOS4 update.

[www.thecrosbygroup.com](http://www.thecrosbygroup.com)

### Crosby U.S.A.

P.O. Box 3128  
 Tulsa, OK 74101  
 U.S.A.  
 Sales Office: (918) 834-4611  
 Fax: (918) 832-0940  
[crosbygroup@thecrosbygroup.com](mailto:crosbygroup@thecrosbygroup.com)  
 9999525

### Crosby Canada

145 Heart Lake Road  
 Brampton, Ontario L6W 3K3  
 Canada  
 Sales Office: (905) 451-9261  
 Fax: (877) 260-5106  
[sales@crosby.ca](mailto:sales@crosby.ca)

### Crosby Europe

Industriepark Zone B n°26  
 2220 Heist-op-den-Berg  
 Belgium  
 Sales Office: (+32) (0)15 75 71 25  
 Fax: (+32) (0)15 75 37 64  
[sales@crosbyeurope.com](mailto:sales@crosbyeurope.com)