

# Crosby® Hook Latch Kits



**SEE APPLICATION AND WARNING INFORMATION**

Para Español: [www.thecrosbygroup.com](http://www.thecrosbygroup.com)

On Pages 139

## S-4320 LATCH KITS



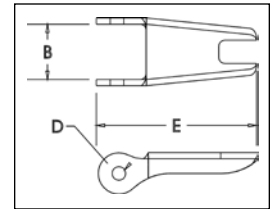
- Heavy duty stamped latch interlocks with the hook tip.
- High cycle, long life spring.
- Can be made into a “Positive Locking” Hook when proper cotter pin is utilized.
- Latch kits shipped unassembled and individually packaged with instructions.

**IMPORTANT:** The new S-4320 Latch Kit will not fit the old style 319, 320 and 322 hooks.

## S-4320 Replacement Latch Kits for NEW 319N, 320N, 322N and 339N Hooks

Hook Size (t)			Hook ID Code	S-4320 Stock No.	SS-4320 Stock No.*	Weight Each (kg)	Dimensions (mm)		
Carbon	Alloy	Bronze					B	D	E
.75	1.25	.5	D	1096325	1097100	.01	12.7	3.80	36.6
1	1.6	.6	F	1096374	1097109	.02	13.7	4.30	39.6
1.6	2	1	G	1096421	1097118	.02	16.0	4.30	42.2
2	3.2	1.4	H	1096468	1097127	.03	16.8	4.30	48.5
3.2	5.4	2	I	1096515	1097136	.05	21.1	5.10	58.5
5	8	3.5	J	1096562	1097145	.07	26.4	5.10	73.2
7.5	11.5	5	K	1096609	1097154	.13	31.8	6.85	90.5
10	16	6.5	L	1096657	1097163	.15	34.3	6.85	97.0
15	22	10	N	1096704	1097172	.38	42.2	9.90	132

\* SS-4320 is Stainless Steel construction with cad plated steel nuts.



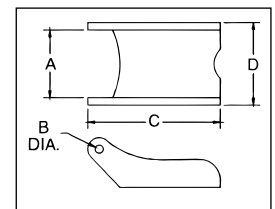
## S-4088 LATCH KITS



- To be used on A-327 and A-339 Grade 8 Sling Hooks.
- Latch Kits shipped unassembled and individually packaged with instructions.

## S-4088 Alloy Hook Latch Kits

Hook Chain Size (mm)	S-4088 Stock No.	Weight Each (kg)	Dimensions (mm)			
			A	B	D	D
6-7	1090250	.03	19.8	4.05	51.5	23.9
8-10	1090251	.06	26.2	4.85	68.5	31.8
13	1090252	.07	26.2	4.85	76.0	31.8
16	1090253	.07	26.2	4.85	82.5	31.8
19	1090254	.07	38.9	6.60	105	47.8
22	1090255	.07	38.9	6.60	118	51.0



**SEE APPLICATION AND WARNING INFORMATION**

Para Español: [www.thecrosbygroup.com](http://www.thecrosbygroup.com)

On Page 258

## S-4338 LATCH KITS



- Latch Kits shipped unassembled and individually packaged with instructions.
- For use only with Crosby L-1338 and L-1358 Grab Hooks (page 227).

## S-4338 Grab Hook Latch Kits

Hook Size		S-4338 Stock No.	Weight Each (kg)	Dimensions (mm)	
(mm)	(in.)			A	B
7	1/4	1048426	.01	4.7	40.4
8	5/16				
10	3/8	1048435	.01	4.7	45.2
13	1/2	1048444	.02	6.3	57.2
16	5/8	1048453	.03	7.9	65.2

