

Pipe Hangers, Supports and
Accessories Base Price List.

v|06102019.1



**Filling industry’s needs for pipe hangers, supports, strut,
custom fabrication and metal stampings.**

- Stocking stainless steel hangers, strut and accessories in Type 304 and Type 316.
- Offering same day shipping for truck and air freight shipments.
- Shipping material packaged and tagged per the customer’s instructions.
- Offering order transactions via EDI technology.

Coatings and finishes include:

- Electro-galvanizing
- Hot dip galvanizing
- Copper plating
- Copper epoxy coating
- Chrome plating
- Plastic coating
- Epoxy Coating

Multiplier: _____

Local Sales Representative: _____

Factory contact: _____

180 OLCOTT STREET • MANCHESTER, CT 06040
 TELEPHONE: (860) 647-1431 • USA: 1-800-243-4844
 FAX: (860) 647-1160
 ORDERS: ORDERS@EMPIREINDUSTRIES.COM
 QUOTES: QUOTES@EMPIREINDUSTRIES.COM
EMPIREINDUSTRIES.COM

TERMS OF SALE

AGREEMENTS: All agreements are subject to strikes, accidents or other causes beyond our control. Prices and designs are subject to change without notice.

TAXES: The buyer is liable for any Federal or State taxes imposed on the seller.

WARRANTY: We guarantee to replace, or at our option, to repair any material which we find in our sole discretion to be defective in material or workmanship; provided that a claim and proof thereof is made in writing to us within thirty (30) days after purchaser's receipt. In no event shall we be liable for transportation to or from our factory, installation, adjustments or any expenses or damages which may arise in loss of use, and the foregoing shall be the purchaser's sole remedy hereunder. No other warranty or guarantee of any kind is made, expressed or implied. Products sold but not manufactured by Empire are not warrantied by Empire; however, to the extent possible, Empire will pass through to the purchaser any supplier's warranty.

CLAIMS: No claims for shortages allowed unless made in writing within ten (10) days of receipt of goods. All material sent out will be carefully counted and packed. Claims for goods damaged or lost in transit should be made to the carrier as our responsibility ceases on delivery to the carrier.

LIABILITY FOR MISUSE: We shall not be liable for damages to property or persons due to improper installation of our material or through attempts to utilize the material under conditions which exceed the designed capabilities. Purchaser agrees to indemnify and hold Empire Industries, INC harmless from any and all claims, liabilities, damages, costs, and expenses asserted against us or incurred by us because of injuries to persons or damages to property resulting from the improper installations or misuse of the material.

RETURNS: Permission to return standard stocked merchandise must be obtained in writing. Credit will be issued subject to the following:

1. Return freight charges must be prepaid.
2. All material must be in first-class condition on arrival at our plant; if not, reconditioning costs will be deducted from the credit memo.
3. Return good authorizations (RGAs) will require a signed, authorized RGA form from the party returning the material. Any items that deviate from the signed RGA form will be deducted from the credit, or shipment may be refused.
4. Credit will be allowed on the basis of the price charged less a minimum handling charge of 25%, and less any outbound freight allowed or paid by Empire.
5. Materials are NOT RETURNABLE after 60 days beyond date of invoice.
6. Credits received for returned goods must be used within 12 months beyond date of credit invoice.

SPECIAL ORDERS: Orders quoted special with non-standard material are not subject to cancellation or return unless such terms are agreed upon.

MILL TEST REPORT POLICY: In most cases, Empire Industries can furnish a Mill Test Report (MTRs) and/or Certificate of Compliance (C of Cs) upon receipt of a formal purchase order. If an MTR (or C of C) is to be required, Empire strongly suggests that we are made aware of such at the time of quotation. MTRs must be formally requested on the original purchase order and will not be available for product that has already been shipped. Please be advised that individual MTRs and/or C of Cs hold a minimum charge of \$25.00 each. Such charge will be applied to the corresponding invoice of the product purchased.

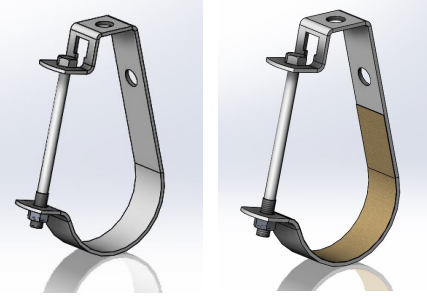
MINIMUM INVOICE: \$50.00 plus transportation.

INTEREST CHARGE: Any amount not paid within terms by the customer shall bear interest at the maximum rate permitted by law, not to exceed 1 1/2% per month.

FREIGHT ALLOWANCE: All prices are F.O.B. point of shipment. Full freight allowed orders are negotiated on a regional basis (Contact your local manufacturers representative or the factory direct).

FIG. 10J

j-hanger

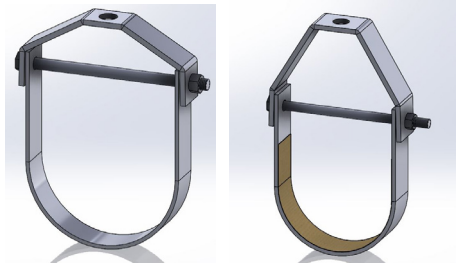


Materials/Finishes	Electro-Galvanized: Imported (10JGI)	Electro-Galvanized: Imported, 3/16" Felt-lined (10JGIFL)
Variants:	T-304 Stainless (10JSS)	T-316 Stainless (10JSX)
Service:	Designed for the suspension of non-insulated, stationary pipe lines.	
Approvals:	Complies with Manufactures' Standardization Society (MSS) SP-58 & SP-69 (Type 5)	
Ordering:	Specify figure number, finish and pipe size.	
Notes:	Stainless steel hangers are recommended for applications where protection from a corrosive environment is required.	

PIPE SIZE	E.G.	SS	SX	GIFL	STD. PKG.
1/2	5.22	POA	POA	6.02	100
3/4	5.42			6.30	100
1	5.51			6.91	100
1-1/4	5.81			7.10	100
1-1/2	6.39			8.02	100
2	8.26			8.00	50
2-1/2	15.75			19.95	50
3	16.53			21.49	25
3-1/2	20.91			23.85	25
4	21.97			28.07	25
5	32.68	35.85	25		
6	47.47	51.75	10		
8	57.94	61.46	10		
10	67.13	71.53	BULK		

FIG. 11

adjustable clevis hanger, standard



Materials/Finishes	Plain Carbon Steel (11B)	Electro-Galvanized (11G)
	Hot-Dip Galvanized (11HDG)	T-304 Stainless (11SS)
	T-316 Stainless (11SX)	
Variants:	Pipe Gard (11PG) - Please contact factory for details.	
	Electro-Galvanized, Imported: 1/2" - 12" (11GI)	
	Electro-Galvanized, 3/16" thick Felt-Lined, Imported: 1/2" - 8" (11GIFL)	
	Hot-Dip Galvanized, Imported: 2"-3", 4"-6", 8"-12" (11HDGI)	
Service:	Designed for the suspension of non-insulated, stationary pipe lines.	
Approvals:	U.L. - U.L.C. listed (sizes 2-1/2" - 8" excluding 7") and FM approved (3/4" - 2" galv only. 2-1/2" - 8" plain and galv.). Complies with Federal Specification WW-H-171-E (Type# 1), A-A-1192 A (Type# 1) and Manufacturers' Standardization Society MSS SP-58 and SP-69 (Type# 1).	
Ordering:	Specify figure number, material, finish and pipe size.	
Notes:	For sizes 20" and larger a spacer sleeve is added over the cross bolt. Upper locknut must be tightened securely to assure proper hanger performance. Stainless steel hangers are recommended for applications where protection from a corrosive environment is required.	

PIPE SIZE	PLAIN	E.G.	H.D.G.	SS	SX	GI	HDGI	GIFL	STD. PKG.
1/2	2.99	3.39	4.38	22.32	28.04	3.29	3.32	POA	100
3/4	2.98	3.45	4.38	24.13	30.20	3.36	3.37		100
1	3.07	3.59	4.57	25.57	32.37	3.51	3.57		100
1-1/4	3.36	4.16	5.18	27.73	34.53	4.07	3.96		100
1-1/2	3.36	4.62	5.28	31.16	38.50	4.58	4.29		100
2	3.61	5.28	6.00	35.80	45.54	4.73	6.02		50
2-1/2	6.77	10.02	11.66	67.92	84.34	9.37	11.63		50
3	7.61	11.53	13.14	81.28	105.70	10.23	13.10		25
3-1/2	10.30	15.48	20.87	--	143.61	--	--		25
4	9.66	14.07	17.39	110.94	144.63	12.30	17.41		25
5	14.81	20.43	27.32	168.88	215.63	20.16	27.29		25
6	19.39	27.99	33.25	209.60	261.23	27.30	33.19		10
7	31.64	50.25	62.25	--	--	--	--		10
8	28.79	42.56	53.03	300.63	403.20	40.52	52.95		10
10	56.06	79.77	98.72	548.68	715.56	75.48	99.86		BULK
12	70.94	101.06	127.58	696.13	903.76	88.71	127.35		BULK
14	123.20	159.74	257.87	762.44	1,106.32	--	--		BULK
16	170.81	223.93	368.69	1,246.56	1,807.51	--	--		BULK
18	225.19	286.66	POA	--	--	--	--		BULK
20	438.60	578.09	POA	--	--	--	--		BULK
24	619.85	771.36	POA	--	--	--	--		BULK
30	874.23	1,082.90	POA	--	--	--	--		BULK



FIG. 11DIP

clevis hanger for awwa ductile iron and pvc c-900 pipe



Materials/Finishes	Plain Carbon Steel (11DIPB)	Hot-Dip Galvanized (11DIPHDG)
	T-304 Stainless (11DIPSS)	T-316 Stainless (11DIPSX)
Service:	Designed for the suspension of stationary AWWA ductile iron pipe and PVC C-900 pipe.	
Approvals:	Complies with Federal Specifications WW-H-171-E (Type# 1), A-A-1192 A (Type# 1), and Manufacturers' Standardization Society MSS SP-58 and SP-69 (Type# 1).	
Ordering:	Specify figure number, material, finish and pipe size.	
Notes:	For 3" DIP, use standard 11G0350. For sizes 8" and larger a spacer sleeve is added over the cross bolt. Upper locknut must be tightened securely to assure proper hanger performance. Stainless steel hangers are recommended for applications where protection from a corrosive environment is required.	

PIPE SIZE	PLAIN	H.D.G.	SS	SX	STD. PKG.
4	19.20	28.03	POA	POA	25
6	38.79	55.22			25
8	71.78	114.36			10
10	121.97	180.02			BULK
12	152.85	222.94			BULK
14	329.45	POA			BULK
16	339.96				BULK
18	566.70				BULK
20	1,024.44				BULK
24	1,187.37				BULK

FIG. 11F

flat top clevis hanger

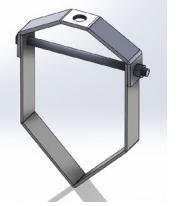


Materials/Finishes	Plain Carbon Steel (11FB)	Electro-Galvanized (11FG)
	Hot-Dip Galvanized (11FHDG)	T-304 Stainless (11FSS)
	T-316 Stainless (11FSX)	
Service:	Designed for the suspension of non-insulated stationary pipe where space is limited.	
Approvals:	Complies with MSS SP-58 and SP-69 (Type #1).	
Ordering:	Specify figure number, finish and pipe size.	
Notes:	Upper locknut must be tightened securely to assure proper hanger performance.	

PIPE SIZE	PLAIN	E.G.	H.D.G.	SS	SX	STD. PKG.
2	21.34	27.25	POA	POA	POA	50
2-1/2	29.12	32.03				50
3	26.93	33.69				25
3-1/2	65.60	--				25
4	31.06	40.02				25
5	41.88	55.87				25
6	59.67	69.06				10
8	86.40	97.48				10

FIG. 11V

v bottom clevis hanger

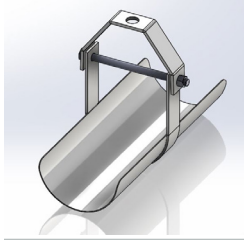


Materials/Finishes	Plain Carbon Steel (11VB)	Electro-Galvanized (11VG)
	T-304 Stainless (11VSS)	T-316 Stainless (11VXS)
Service:	Designed for the suspension of flexible plastic pipe lines. Used in conjunction with figure #12 channel.	
Ordering:	Specify figure number, finish and pipe size	
Notes:	Hanger and channel sold separately. Upper locknut must be tightened securely to assure proper hanger performance.	

SIZE NO.	PIPE SIZE	PLAIN	E.G.	SS	SX
1	1/2 - 2	8.96	11.48	POA	POA
2	2-1/2 - 4	19.46	26.61		
3	5 - 6	58.64	POA		
4	7 - 8	86.40			
5	10	134.28			

FIG. 11WS

clevis with welded shield



Materials/ Finishes	Plain Carbon Steel (11WSB)	Electro-Galvanized (11WSG)
	T-304 Stainless (11WSSS)	T-316 Stainless (11WSSX)
Variants:	Electro-Galvanized: Import (11WSGI)	
Service:	Designed for the suspension of stationary insulated pipe lines. Insulation protection shield is spot welded in place	
Ordering:	Specify figure number, finish and hanger size.	
Notes:	To determine proper hanger size, use hanger selection guide below. Upper locknut must be tightened securely to assure proper hanger performance.	

HAGNER SIZE	E.G.	SS	SX	SHIELD I.D.
1-1/2	26.28	POA	POA	1-7/8
2	26.72			2-3/8
2-1/2	32.84			2-7/8
3	37.02			3-1/2
3-1/2	40.68			4
4	41.51			4-1/2
5	56.94			5-5/8
6	67.95			6-5/8
7	95.73			7-5/8
8	93.16			8-5/8
10	160.26			10-3/4
12	204.27			12-3/4
14	POA			14
16				16
18		18		
20		19		
24		21		

FIG. 11X

adjustable clevis hanger with extended bottom

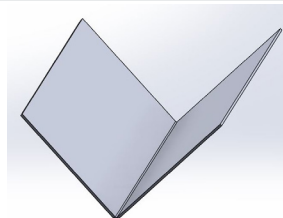


Materials/ Finishes	Plain Carbon Steel (11XB)	Electro-Galvanized (11XG)
	Hot-Dip Galvanized (11XHDG)	T-304 Stainless (11XSS)
	T-316 Stainless (11XSSX)	
Service:	Designed for the suspension of non-insulated stationary pipe lines. The bottom section of the hanger is elongated to allow for easier installation of insulation.	
Approvals:	Complies with Federal Specifications WW-H-171-E (Type# 1), A-A-1192 A (Type# 1), and Manufacturers' Standardization Society MSS SP-58 and SP-69 (Type# 1).	
Ordering:	Specify figure number, finish and pipe size	
Notes:	Upper locknut must be tightened securely to assure proper hanger performance.	

PIPE SIZE	PLAIN	E.G.	SS	SX	STD. PKG.
1/2	18.18	21.39	POA	POA	50
3/4	18.30	21.64			50
1	18.42	21.84			50
1-1/4	18.94	23.27			50
1-1/2	19.66	23.84			25
2	23.33	24.61			25
2-1/2	27.90	32.93			25
3	30.42	37.64			20
4	38.15	51.03			10
5	51.74	72.30			10
6	69.06	90.60			10
8	108.24	139.77			10
10	154.00	222.69	BULK		
12	189.70	283.89	BULK		

FIG. 12

v-channel

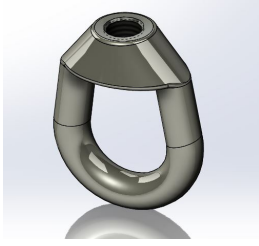


Materials/Finishes	Pre-Galvanized Carbon Steel (10' lengths) (12)
Service:	Designed for the support of plastic or other flexible pipe systems. Use with FIG. 11V "V" bottom clevis hanger. Hangers should be placed as close to channel joints as possible.
Ordering:	Specify figure number and size number.

SIZE NO.	PIPE SIZE	E.G.
1	1/2 - 2	86.28
2	2-1/2 - 4	150.20

FIG. 13I

weldless eyenut

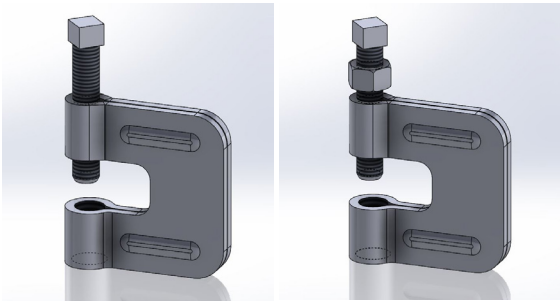


Materials/ Finishes	Plain Carbon Steel (13BI)	Hot-Dip Galvanized (13HDGI)
	T-304 Stainless (13SSI)	
Variants:	Plain Carbon Steel, Domestic (13B)	
	Hot-Dip Galvanized, Domestic(13HDG)	
	T-316 Stainless, Domestic (13SX)	Plain Carbon Steel, L.H. Threads (13LB)
	Hot-Dip Galvanized, L.H. Threads (13LHDG)	
	T-316 Stainless, L.H, Threads (13LSX)	
Service:	Designed for use on high temperature piping applications.	
Approvals:	Complies with Federal Specifications WW-H-171-E (Type# 17), A-A-1192 A (Type# 17), and Manufacturers' Standardization Society MSS SP-58 and SP-69 (Type# 17).	
Ordering:	Specify figure number, finish and rod size.	
Notes:	Hot Dip Galvanized eye nuts are not tapped oversize. All sizes of domestic eye nuts are priced on application.	

ROD SIZE	PLAIN	H.D.G.	SS	STD. PKG.
3/8	14.44	21.16	POA	100
1/2	14.44	21.16		100
5/8	27.16	40.02		50
3/4	27.16	40.02		50
7/8	68.76	100.77		10
1	68.76	100.77		10
1-1/8	201.33	347.86		10
1-1/4	201.33	347.86		5
1-1/2	236.93	369.31		5

FIG. 21 / 21L

steel c-clamp

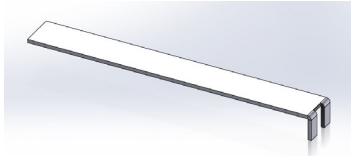


Materials/ Finishes	Plain Carbon Steel (21B)	Electro-Galvanized (21G)
Variants:	Plain Carbon Steel W/ Locknut (21LB)	
	Electro-Galvanized W/ Locknut (21LG)	
	T-304 Stainless Steel W/ Locknut (21LSS)	
	T-316 Stainless Steel W/ Locknut (21LSX)	
Service:	Designed for attaching hanger rod to the bottom flange of a beam. Features the ribbed design for added strength. Hardened steel cup point set screw secures clamp to beam.	
Approvals:	UL - U.L.C. listed 3/8 and 1/2 (1/2 for 4" IPS max) with locknut only. FM approved (excluding 21LSS and 21LSX) for 3/8 only with and without locknut. Complies with Federal Specification WW-H-171-E (Type# 23), A-A-1192 A (Type# 23), Manufacturers' Standard Society SP-58 and MSS SP-69 (Type# 23).	
Ordering:	Specify figure number, finish and rod size.	
Notes:	See MSS SP-69 for proper set screw torque recommendations. Full carton quantities only 3/8" and 1/2".	

FIG. 21 C-CLAMP					
SIZE	PLAIN	E.G.	SS	SX	STD. PKG.
3/8	4.70	6.25	--	--	100
1/2	4.96	7.08			100
5/8	10.76	13.54			50
3/4	16.30	19.97			50
FIG. 21L C-CLAMP W/ LOCKNUT					
SIZE	PLAIN	E.G.	SS	SX	STD. PKG.
3/8	\$4.96	\$6.00	33.22	46.12	100
1/2	\$5.15	\$6.97	35.00	48.71	100
5/8	\$14.05	\$17.15	77.44	120.08	50
3/4	\$18.12	\$22.30	124.38	199.05	50
7/8	POA	POA	--	--	--

FIG. 21R

retaining strap

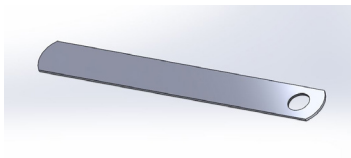


Materials/ Finishes	Plain Carbon Steel (21RB)	Electro-Galvanized (21RG)
	T-304 Stainless Steel (21RSS)	T-316 Stainless Steel (21RSX)
Service:	Designed for use with figure FIG. 21, FIG. 21L (3/8" - 3/4") and FIG. 23L (3/8" and 1/2") to eliminate movement of the beam clamp due to vibration.	
Approvals:	FM Approved (3/8")	
Ordering:	Specify figure number, finish and length	
Notes:	Add 2" minimum to flange width to determine length.	

SIZE	PLAIN	E.G.	SS	SX	STD. PKG.
4-1/2	5.48	7.15	POA	POA	100
6	5.54	7.22			100
8	5.61	7.42			100
10	5.73	7.54			100
12	6.69	8.45			100
14	8.18	10.51			100

FIG. 22R

retaining strap

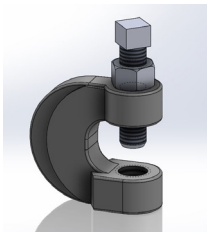


Materials/ Finishes	Plain Carbon Steel (22RB)	Electro-Galvanized (22RG)
	T-304 Stainless Steel: 3/8" - 1/2", 13ga x 1" (22RSS)	T-316 Stainless Steel: 3/8" - 1/2", 13ga x 1" (22RSX)
Service:	Designed for use with FIG. 61 and FIG. 62.	
Ordering:	Specify figure number, finish and length	
Notes:	Add 2" minimum to flange width to determine length. Custom lengths available. 3/8" & 1/2" rod sizes provided on same strap.	

LENGTH (IN.)	PRICE EACH - PLAIN				
	3/8 ROD	1/2 ROD	5/8 ROD	3/4 ROD	7/8 ROD
4-1/2	4.06	4.06	5.04	5.09	5.54
6	4.31	4.31	5.22	5.28	5.80
8	4.51	4.51	5.66	5.73	6.39
10	5.15	5.15	6.00	6.12	7.22
12	5.85	5.85	6.97	7.03	8.18
14	6.77	6.77	7.86	7.61	10.51

FIG. 23L

malleable iron c-clamp with locknut



Materials/ Finishes	Plain Ductile Iron (23LB)	Electro-Galvanized (23LG)
Service:	Designed for attaching hanger rod to the bottom flange of a beam.	
Approvals:	U.L. - U.L.C. listed and FM approved 3/8 and 1/2 ONLY. Complies with Federal Specification WW-H-171-E (Type# 23), A-A-1192 A (Type# 23) and Manufacturers' Standardization Society MSS SP-58 and SP-69 (Type# 23).	
Ordering:	Specify figure number, finish and rod size.	
Notes:	See MSS SP-69 for proper set screw torque recommendations	

SIZE	PLAIN	E.G.	STD. PKG.
3/8	5.37	8.00	100
1/2	6.57	8.58	100
5/8	10.50	16.86	50
3/4	13.93	21.95	50

FIG. 24L

purlin clamp

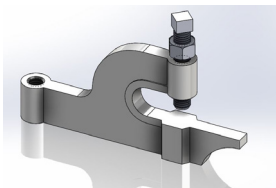


Materials/ Finishes	Plain Ductile Iron (24LB)	Electro-Galvanized (24LG)
Service:	Designed for use with large-lip steel Purlin beams.	
Ordering:	Specify figure number and finish.	
Notes:	See MSS SP-69 for proper set screw torque recommendations	

SIZE	PLAIN	E.G.	STD. PKG.
3/8	26.65	32.38	20

FIG. 25L

extended c-clamp with locknut

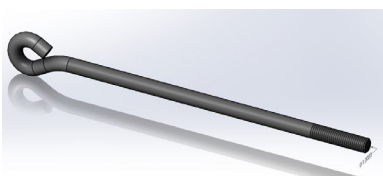


Materials/ Finishes	Plain Malleable Iron (25LB)
Service:	Designed for attachment to beams where flange thickness does not exceed 3/4" and where it is desired to have the rod support offset from the beam.
Ordering:	Specify figure number and finish.
Notes:	See MSS SP-69 for proper set screw torque recommendations.

SIZE	ROD	PLAIN	STD. PKG.
3/8	3/8	42.02	50

FIG. 26

eye rod



Materials/ Finishes	Plain Carbon Steel (26B)	Electro-Galvanized (26G)
	Hot-Dip Galvanized (26HDG)	T-304 Stainless Steel (26SS)
	T-316 Stainless Steel (26SX)	
Variants:	Plain Carbon Steel, Welded (26WB)	Electro-Galvanized, Welded (26WG)
	Hot-Dip Galvanized, Welded (26WHDG)	T-304 Stainless Steel, Welded (26WSS)
	T-316 Stainless Steel, Welded (26WSX)	
Service:	Designed for use in hanger assemblies and supports.	
Ordering:	Specify figure number, finish and rod size. Made to order. Min order to be \$100.00 net / size.	
Notes:	Other lengths, rod diameters and thread lengths available upon request.	

INCHES	3/8 ROD	1/2 ROD	5/8 ROD	3/4 ROD	7/8 ROD	1 ROD
8 - 72	POA					

FIG. 31 band hanger



Materials/ Finishes	Plain Carbon Steel (31B)	Electro-Galvanized (31G)
	Plastic Coated (31PC)	T-304 Stainless (31SS)
	T-316 Stainless (31SX)	
Variants:	Pipe Gard (31PG) - Please contact factory for details.	
Service:	Designed for the suspension of non-insulated stationary pipe lines. The plastic coated band hanger protects the pipe from the steel surface of the hanger and is designed to reduce noise, vibration and prevents electrolysis between pipe and the hanger. Stainless steel hangers are recommended for applications where protection from corrosive environments is needed.	
Approvals:	Complies with Federal Specification WWH-171-E (Type# 7), A-A-1192A (Type# 7), Manufacturers' Standardization Society SP-58 and MSS SP-69 (Type# 7).	
Ordering:	Specify figure number, finish and pipe size.	
Notes:	Upper locknut must be tightened securely to assure proper hanger performance.	

PIPE SIZE	PLAIN	E.G.	P.C.	SS	SX	STD. PKG.
3/8	1.73	2.51	8.70	--	--	100
1/2	1.73	2.51	8.70	15.16	24.13	100
3/4	1.81	2.58	8.89	15.34	24.37	100
1	1.81	2.90	9.22	16.24	25.27	100
1-1/4	1.88	3.16	9.66	17.38	26.83	100
1-1/2	1.93	3.55	9.91	18.83	29.18	100
2	2.00	4.19	12.50	20.39	31.52	100
2-1/2	3.73	6.25	14.57	34.11	52.88	50
3	4.00	7.03	15.98	35.68	55.29	50
3-1/2	5.85	9.91	24.36	--	--	50
4	6.00	9.91	24.48	42.00	65.09	50
5	6.83	12.43	33.76	51.44	79.71	BULK
6	19.07	31.70	66.43	86.63	129.53	BULK
8	27.45	41.18	98.06	99.69	154.50	BULK

FIG. 31CT band hanger for copper tubing



Materials/ Finishes	Copper Plated Carbon Steel (31CTP)
Variants:	Copper Epoxy Coated <i>Copper Gard</i> : Imported (310CTI)
Service:	Designed for the suspension of non-insulated stationary pipe.
Approvals:	Complies with Federal Specifications WW-H-171-E (Type# 7), A-A-1192 A (Type# 7), and Manufacturers' Standardization Society MSS SP-58 and SP-69 (Type# 7).
Ordering:	Specify figure number, finish and tube size.
Notes:	Upper locknut must be tightened securely to assure proper hanger performance. COPPER-GARD products offer superior corrosion protection due to the epoxy coating over electro-galvanized steel. The alternative, copper plating that has been done historically, is for identification purposes only and is not intended for corrosion protection. Refer to MSS-SP58 13.3.

TUBING SIZE	PLATED (CTP)	COATED (CTI)	STD. PKG.
1/2	2.32	2.01	100
3/4	2.39	2.01	100
1	2.45	2.14	100
1-1/4	2.64	2.44	100
1-1/2	2.77	2.57	100
2	2.84	2.72	100
2-1/2	6.00	5.08	50
3	6.19	5.22	50
3-1/2	10.95	11.43	50
4	11.02	11.51	50
5	16.63	15.52	25
6	20.30	19.15	25

FIG. 34 , 35 & 36 vibration spring-flex and neoprene hanger

FIG. 34



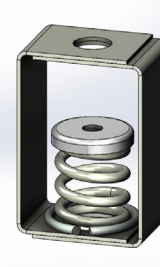
Materials/ Finishes	Painted Carbon Steel Housing with Neoprene Rubber Element (34)
Ordering:	Specify figure number, isolator size, rod size and load. POA

FIG. 35



Materials/ Finishes	Painted Carbon Steel Housing with Steel Spring (35)
Ordering:	Specify figure number, isolator size, rod size and load. POA

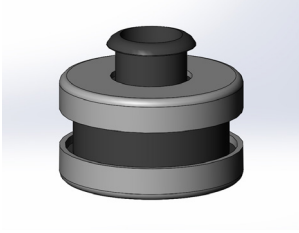
FIG. 36



Materials/ Finishes	Painted Carbon Steel Housing and spring with neoprene rubber element (36)
Ordering:	Specify figure number, isolator size, rod size and load. POA

FIG. 37

anti-vibration hanger mount



Materials/ Finishes:	Electro-Galvanized W/ Elastomer Element (37AVHM)
Service:	Designed to isolate both noise and vibration for piping or suspended equipment.
Ordering:	Specify figure number.
Notes:	Can be used with threaded rods up to 3/8".

ITEM NUMBER	PRICE EACH
37AVHM50	POA
37AVHM100	

FIG. 40HS

"handy" split ring hanger

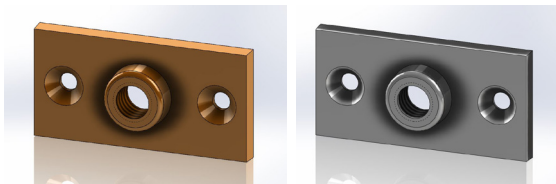


Materials/ Finishes:	Electro-Galvanized with EPDM Insulation Liner (40HS)
Service:	Designed for the suspension of insulated and non-insulated pipe lines.
Approvals:	Complies with Federal Specification WWH-171-E (Type# 25), A-A-1192A (Type# 12), Manufacturers' Standardization Society SP-58 and MSS SP-69 (Type# 12).
Ordering:	Specify figure number and CT or IPS Size.
Notes:	The "Handy Split" hinge device allows single handed installation. UV resistant EPDM ubber provides noise reduction. Temperature range is from -50° F through 230° F.

PART NO.	PIPE SIZE IPS	TUBE SIZE CT	PRICE EACH	STD. PKG.
40HS0001	1/4	3/8	4.78	50
40HS0002	3/8	1/2	4.78	50
40HS0003	--	5/8	4.78	50
40HS0004	1/2	3/4	5.15	50
40HS0005	3/4	1	5.43	50
40HS0006	1	1-1/4	5.71	50
40HS0007	1-1/4	1-1/2	7.15	25
40HS0008	1-1/2	--	9.07	25
40HS0009	--	2	7.72	25
40HS0010	2	--	12.37	25
40HS0011	--	2-1/2	11.73	10
40HS0012	2-1/2	--	21.87	10
40HS0013	--	3	33.38	10
40HS0014	3	--	33.38	10
40HS0015	--	3-1/2	33.38	10
40HS0016	3-1/2	4	39.10	10
40HS0017	4	--	39.10	10

FIG. 41A

hanger flange plate

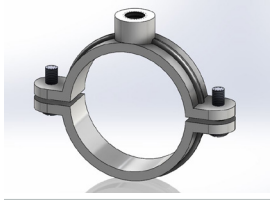


SIZE	PLAIN	E.G.	COPPER EPOXY COATED	SOLID BRASS	SS	SX	STD. PKG.
3/8	2.78	3.29	3.51	18.22	42.31	51.60	100
1/2	4.43	5.15	4.86	--	46.32	58.18	100

Materials/ Finishes:	Plain Malleable Iron (41AB)	Electro-Galvanized (41AG)
	Chrome Plated (41ACR)	Copper Epoxy Coated (41ACT)
	Solid Brass (41ASB)	T-304 Stainless (41ASSI)
	T-316 Stainless (41ASXI)	
Service:	Designed for attaching hanger rod to wood beams, ceilings, walls and floor.	
Ordering:	Specify figure number, finish and rod size.	
Notes:	Stainless flange plates are recommended for applications where protection from a corrosive environment is required. <i>COPPER-GARD</i> Products offer superior corrosion protection due to the epoxy coating over electro-galvanized material. The alternative copper plating that has been done traditionally is for identification purposes and is not intended for corrosion protection. Refer to MSS SP-58, 13.3.	

FIG. 41OD

split ring extension hanger for o.d. tubing stainless



Materials/ Finishes	T-304 Stainless (41ODSSI)	T-316 Stainless (41ODSXI)
Service:	Designed for the suspension of non-insulated stationary pipe lines, horizontally or vertically.	
Approvals:	Complies with Manufacturers' Standardization Society MSS SP-58 and SP-69 (Type# 12).	
Ordering:	Specify figure number, finish and pipe size.	
Notes:	Stainless steel hangers are recommended for applications where protection from a corrosive environment is required.	

OD SIZE	SSI	SXI	STD. PKG.
3/8	POA	POA	100
1/2			100
3/4			100
5/8	57.75	67.33	100
7/8	59.54	69.18	100
1-1/8	64.83	74.69	100
1-3/8	71.83	81.98	100
1-1/2	POA	80.77	50
1-5/8	75.33	85.62	100
2	POA	114.34	50
2-1/8	98.14	120.29	50
2-5/8	210.28	247.81	50
3-1/8	240.01	290.82	25
4-1/8	266.67	327.91	25

FIG. 41

split ring extension hanger

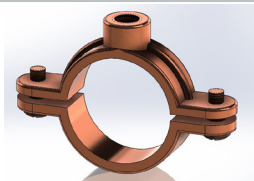


Materials/ Finishes	Plain Malleable Iron (41B) Chrome Plated (41CR)	Electro-Galvanized (41G)
Service:	Designed for the suspension of non-insulated stationary pipe, horizontally or vertically.	
Approvals:	Complies with Federal Specification WWH-171-E (Type# 25), A-A-1192A (Type# 12), Manufacturers' Standardization Society SP-58 and MSS SP-69 (Type# 12).	
Ordering:	Specify figure number, finish and pipe size.	
Notes:	Split ring extension hangers with hinged design available in 3/8 - 4" (41H).	

PIPE SIZE	PLAIN	E.G.	CHROME PLATED	STD. PKG.
1/2	3.57	4.07	POA	100
3/4	3.72	4.29		100
1	3.84	4.43		100
1-1/4	4.86	5.29		50
1-1/2	5.58	6.22		50
2	6.57	7.43		50
2-1/2	Hinge Only	Hinge Only		--
3	Hinge Only	Hinge Only		--
4	Hinge Only	Hinge Only		--

FIG. 41CT

split ring for copper tubing



Materials/ Finishes	Copper Epoxy Coated (COPPER-GARD) Malleable Iron (41CT)	Solid Brass (41CTSB)
Service:	Designed for the suspension of non-insulated stationary copper tubing, horizontally or vertically.	
Approvals:	Complies with Federal Specification WWH-171-E (Type# 25), A-A-1192A (Type# 12), Manufacturers' Standardization Society SP-58 and MSS SP-69 (Type# 12).	
Ordering:	Specify figure number, finish and pipe size.	
Notes:	Copper epoxy coated (COPPER-GARD). COPPER-GARD products offer superior corrosion protection due to the epoxy coating over electro-galvanized material.	

TUBING SIZE	COPPER EPOXY COATED	SOLID BRASS	STD. PKG.
1/2	3.57	16.37	100
3/4	3.64	17.30	100
1	3.72	18.73	100
1-1/4	4.15	--	50
1-1/2	5.00	--	50
2	5.85	--	50
2-1/2	Hinge Only	--	--
3	Hinge Only	--	--
4	Hinge Only	--	--

FIG. 41H

split ring extension hanger, hinge design

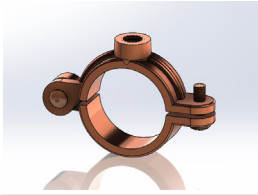


Materials/ Finishes	Plain Malleable Iron (41HB)	Electro-Galvanized (41HG)
Service:	Designed for the suspension of non-insulated stationary pipe lines horizontally or vertically.	
Approvals:	Complies with Federal Specification WWH-171-E (Type# 25), A-A-1192A (Type# 12), Manufacturers' Standardization Society SP-58 and MSS SP-69 (Type# 12).	
Ordering:	Specify figure number, finish and pipe size	

PIPE SIZE	PLAIN	E.G.	CHROME PLATED	STD. PKG.
3/8	3.57	4.07	POA	100
1/2	3.57	4.07		100
3/4	3.72	4.29		100
1	3.84	4.43		100
1-1/4	4.86	5.29		50
1-1/2	5.58	6.22		50
2	6.57	7.43		50
2-1/2	17.44	21.73		25
3	24.22	25.80		25
4	30.60	34.02		25

FIG. 41HCT

split ring extension hanger, hinge design for copper tubing

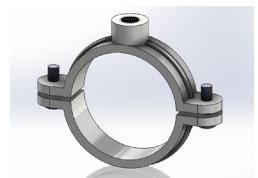


Materials/ Finishes	Copper Epoxy Coated (<i>COPPER-GARD</i>) Malleable Iron (41HCT)	
Service:	Designed for the suspension of non-insulated stationary copper tubing, horizontally or vertically.	
Approvals:	Complies with Federal Specification WWH-171-E (Type# 25), A-A-1192A (Type# 12), Manufacturers' Standardization Society SP-58 and MSS SP-69 (Type# 12).	
Ordering:	Specify figure number, finish and tube size.	
Notes:	COPPER-GARD products offer superior corrosion protection due to the epoxy coating over electro-galvanized material. The alternative copper plating that has been done historically identifies the product and is not intended for protection. Refer to MSS SP58, 13.3.	

TUBING SIZE	COPPER EPOXY COATED	STD. PKG.
1/4	3.57	100
3/8	3.57	100
1/2	3.57	100
3/4	3.64	100
1	3.72	100
1-1/4	4.15	50
1-1/2	5.00	50
2	5.85	50
2-1/2	16.30	25
3	19.87	25
4	27.80	25

FIG. 41SSI/SXI

t-304 & t-316 stainless steel split ring extension hanger



Materials/ Finishes	T-304 Stainless (41SSI)	T-316 Stainless (41SXI)
Service:	Designed for the suspension of non-insulated stationary pipe lines, horizontally or vertically.	
Approvals:	Complies with Manufacturers' Standardization Society MSS SP-58 and SP-69 (Type# 12).	
Ordering:	Specify figure number, material and pipe size.	
Notes:	Stainless steel hangers are recommended for applications where protection from a corrosive environment is required.	

PIPE SIZE	SS	SX	STD. PKG.
3/8	52.89	61.89	100
1/2	54.54	63.60	100
3/4	56.18	65.33	100
1	61.17	70.47	100
1-1/4	67.76	77.33	100
1-1/2	71.05	80.77	50
2	92.56	113.42	50
2-1/2	198.34	233.79	50
3	238.86	274.38	50
4	277.25	317.27	50

FIG. 47

eye socket



Materials/ Finishes	Plain Malleable Iron (47B)	Electro-Galvanized (47G)
Service:	Designed for attaching hanger rod to various types of hangers.	
Approvals:	Complies with Federal Specification WWH-171E (Type# 16), A-A-1192A (Type# 16), Manufacturers' Standardization Society SP-58 and MSS SP-69 (Type# 16).	
Ordering:	Specify figure number, finish and rod size.	

ROD SIZE	PLAIN	E.G.	STD. PKG.
1/4	2.94	3.21	100
3/8	3.08	3.42	100
1/2	3.79	4.29	100
5/8	5.65	8.28	50
3/4	9.59	12.23	50
7/8	19.87	23.79	50

FIG. 48

riser clamp for plastic pipe



Materials/ Finishes	Plain Carbon Steel (48B)	Electro-Galvanized (48G)
	Plastic Coated (48PC)	
Service:	Designed for the support of plastic DWV pipe.	
Approvals:	Complies with Federal Specification WWH-171E (Type# 8), A-A-1192A (Type# 8), Manufacturers' Standardization Society SP-58 and MSS SP-69 (Type# 8).	
Ordering:	Specify figure number, finish and pipe size.	

PIPE SIZE	PLAIN	E.G.	PLASTIC COATED	STD. PKG.
1-1/2	7.54	10.05	20.30	50
2	7.86	10.37	21.58	50
3	9.47	11.60	24.55	50
4	10.05	14.31	30.42	50

FIG. 50

standard riser clamp

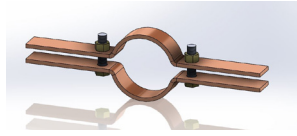


Materials/ Finishes	Plain Carbon Steel (50B)	Electro-Galvanized (50G)
	Hot-Dip Galvanized (50HDG)	Plastic Coated (50PC)
	T-304 Stainless (50SS)	T-316 Stainless (50SX)
Variants:	Pipe Gard (50PG) - Please contact factory for details.	
	T-304 Stainless for DIP sizes (50DIPSS)	
	T-316 Stainless for DIP sizes (50DIPSX)	
Service:	Designed for supporting and stabilizing vertical pipe runs.	
Approvals:	U.L. - U.L.C. listed (sizes 2" - 8"). Complies with Federal Specification WWH-171-E (Type# 8), A-A-1192 A (Type# 8) and Manufacturers' Standardization Society MSS SP-58 and SP-69 (Type# 8).	
Ordering:	Specify figure number, finish and pipe size.	
Notes:	Available in IPS (50) and Ductile Iron Pipe (50DIP) Sizes. Plastic coated riser clamps are completely plastic coated with zinc plated hardware. The plastic coating prevents pipe from coming in contact with the clamp and is designed to reduce noise, vibration and prevent electrolysis between pipe and clamp. Stainless steel riser clamps are recommended for applications where protection from a corrosive environment is required.	

PIPE SIZE - IPS	PLAIN	E.G.	H.D.G.	SS	SX	PLASTIC COATED	STD. PKG.
1/2	8.64	11.54	14.37	58.96	82.54	27.45	50
3/4	8.64	11.54	14.37	61.97	86.70	27.45	50
1	8.64	11.60	14.81	65.39	91.56	28.03	50
1-1/4	10.19	13.14	15.20	70.69	98.96	31.25	50
1-1/2	10.11	13.66	15.72	73.64	103.05	32.73	50
2	10.19	14.06	15.98	80.14	112.20	33.06	50
2-1/2	13.22	17.78	24.93	102.40	133.32	45.61	25
3	13.66	18.94	25.00	105.16	136.62	48.78	25
3-1/2	23.91	30.48	41.24	--	--	--	25
4	16.82	25.00	29.70	120.68	158.70	57.67	25
5	25.19	37.11	41.67	192.40	269.35	86.99	10
6	27.39	39.04	42.65	200.22	280.23	95.04	10
8	55.22	79.32	93.11	364.77	510.72	195.23	BULK
10	78.41	106.90	145.82	594.34	831.44	--	BULK
12	125.90	212.30	POA	POA	POA		BULK
14	165.59	266.05		BULK			
16	300.39	436.35		BULK			
18	341.82	532.15		BULK			
20	408.56	606.63		BULK			
24	527.33	922.56		BULK			
30	POA	POA		BULK			

FIG. 50CT

riser clamp for copper tubing



Materials/ Finishes	Copper Plated Carbon Steel (50CT)
Variants:	Copper Epoxy Coated Electro-Galvanized Steel <i>COPPER-GARD</i> : Imported (50CTI)
Service:	Designed for supporting and stabilizing vertical tubing runs.
Approvals:	Complies with Federal Specification WW-H-171-E (Type# 8), A-A-1192A (Type# 8), Manufacturers' Standardization Society SP-58 and MSS SP-69 (Type# 8).
Ordering:	Specify figure number, finish and pipe size.
Notes:	COPPER-GARD products offer superior corrosion protection due to the epoxy coating over electro-galvanized steel.

PIPE SIZE	COPPER PLATED	COPPER EPOXY COATED	STD. PKG.
1/2	9.61	9.15	50
3/4	9.72	9.22	50
1	10.83	10.14	50
1-1/4	12.12	11.73	50
1-1/2	13.41	13.51	50
2	16.19	15.79	25
2-1/2	18.12	18.60	25
3	19.78	21.07	25
3-1/2	32.93	28.37	25
4	29.38	32.38	25
5	61.09	49.68	10
6	71.91	55.46	10

FIG. 50H

heavy duty riser clamp

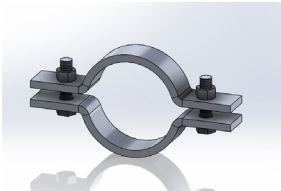


Materials/ Finishes	Plain Carbon Steel (50HB)	Hot-Dip Galvanized (50HHDG)
	T-304 Stainless (50HSS)	T-316 Stainless (50HSX)
Service:	Designed for supporting and stabilizing vertical pipe runs.	
Approvals:	Complies with MSS SP-58 TYPE 42.	
Ordering:	Specify figure number, finish and pipe size.	
Notes:	Shear lugs included. (Shear lugs carry load). Sizes 2" - 8" include 2 lugs Sizes 10" - 20" include 4 lugs	

PIPE SIZE	ALL FINISHES	STD. PKG.
2	POA	BULK
2-1/2		
3		
4		
5		
6		
8		
10		
12		
14		
16		
18		
20		
24		

FIG. 50SA

short arm riser clamp



Materials/ Finishes	Plain Carbon Steel (50SAB)	Electro-Galvanized (50SAG)
Service:	Designed for supporting and stabilizing vertical pipe runs. Overall length of clamp is shorter than standard to accommodate field requirements.	
Approvals:	Complies with Federal Specification WWH-171-E (Type# 8), A-A-1192A (Type# 8), Manufacturers' Standardization Society SP-58 and MSS SP-69 (Type# 8).	
Ordering:	Specify figure number, finish and pipe size.	

PIPE SIZE	PLAIN	E.G.	STD. PKG.
3/4	14.31	POA	100
1	14.31		100
1-1/4	14.57		50
1-1/2	14.76		50
2	15.08		50
2-1/2	16.88		25
3	17.07		25
3-1/2	POA		25
4	20.76		25
5	39.37		15
6	39.95		15

FIG. DPCSS

manhole drop pipe clamp



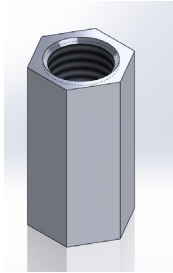
Materials/ Finishes	T-304 Stainless (DPCSS)
Service:	Designed for easy installation and support of manhole drop pipe.
Ordering:	Specify figure number, size 4"-12", SDR-35, DIP/C-900 or IPS.
Notes:	*Mounting Kit (DPCSSKIT) also available POA

PIPE SIZE	SDR-35	DIP/C-900	IPS
4	POA	POA	POA
6			
8			
10			
12			

*T-304 STAINLESS MOUNTING KIT INCLUDES		
QUANTITY	DESCRIPTION	PART #
2	T-304 DROP-IN ANCHOR, 3/8"	77SS0038
2	T-304 ALL THREAD STUD, 3/8" X 10"	68SS0381000K
4	T-304 STAINLESS HEX NUT, 3/8"	56SS0038K
4	T-304 STAINLESS WASHER	52DD0038K
KIT PART # DPCSSKIT		

FIG. 51

rod coupling

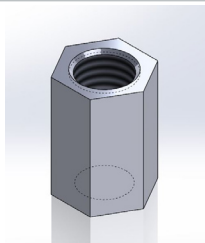


Materials/ Finishes	Plain Carbon Steel (51B)	Electro-Galvanized (51G)
	T-304 Stainless (51SS)	T-316 Stainless (51SX)
Service:	Designed for connecting two lengths of rod with equal diameters.	
Ordering:	Specify figure number, finish and rod size. FULL CARTON QUANTITIES ONLY ON SIZES 3/8" AND 1/2".	

ROD SIZE	PLAIN	E.G.	SS	SX	STD. PKG.
1/4	--	1.82	9.35	POA	100
3/8	1.78	2.53	13.48		50
1/2	2.26	2.70	22.94		50
5/8	4.35	6.29	52.40		25
3/4	6.88	9.35	88.80		20
7/8	15.95	16.82	161.46		15
1	20.52	23.38	211.62		BULK
1-1/8	59.55	62.39	--		BULK
1-1/4	68.13	88.80	--		BULK
1-1/2	111.89	153.09	--		BULK

FIG. 51R

reducing rod coupling

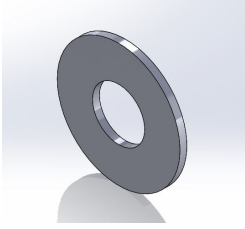


Materials/ Finishes	Electro-Galvanized (51RG)
Service:	Designed for connecting two lengths of rod with different diameters.
Ordering:	Specify figure number, finish and rod size.

ROD SIZE	E.G.	STD. PKG.
3/8 X 1/4	1.86	100
1/2 X 3/8	2.81	100
5/8 X 1/2	4.39	100
3/4 X 5/8	10.45	100
7/8 X 3/4	47.69	50
1 X 7/8	66.03	50

FIG. 52

round steel washer

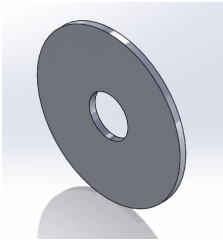


Materials/ Finishes	Plain Carbon Steel (52B)	Electro-Galvanized (52G)
	T-304 Stainless (52SS)	T-316 Stainless (52SX)
Service:	Designed to produce a greater bearing surface.	
Ordering:	Specify figure number, finish and rod size. FULL CARTON QUANTITIES ONLY ON SIZES 1/4" - 3/4" .	

SIZE	PLAIN	E.G.	SS	SX	STD. PKG.
1/4	0.22	0.29	--	POA	100
3/8	0.29	2.36	1.17		100
1/2	0.65	0.73	2.27		50
5/8	1.38	1.74	3.36		25
3/4	2.12	2.49	4.15		20
7/8	2.55	3.21	8.88		15
1	4.87	5.53	--		25
1-1/8	5.53	6.40	--		25
1-1/4	5.82	7.00	--		50
1-1/2	8.31	10.12	--		50

FIG. 52F

fender washer

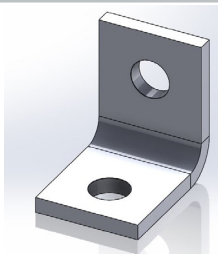


Materials/ Finishes	Electro-Galvanized (52FG)
Service:	Designed to produce a greater bearing surface.
Ordering:	Specify figure number, finish and rod size.

SIZE	OUTSIDE DIAMETER	E.G.	STD. PKG.
1/4	1-1/2	1.01	100
3/8	1-1/2	1.17	100
1/2	2	1.53	50

FIG. 53

angle bracket

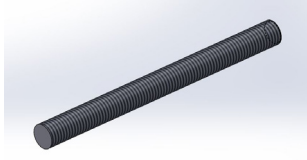


Materials/ Finishes	Plain Carbon Steel (53B)	Electro-Galvanized (53G)
	Hot-Dip Galvanized (53HDG)	T-304 Stainless (53SS)
	T-316 Stainless (53SX)	
Service:	Designed for attaching hanger rod to the side of beams or walls.	
Approvals:	Complies with Federal Specification WW-H-171-E (Type# 35), A-A-1192 A (Type# 34), and MSS SP-58 and 7SP-69 (Type# 34).	
Ordering:	Specify figure number, finish and rod size. FULL CARTON QUANTITIES ON 3/8" AND 1/2" (Plain and EG only). STAINLESS BULK ONLY 5/8"-7/8" .	

SIZE	PLAIN	E.G.	SS	SX	STD. PKG.
3/8	3.93	4.46	POA	POA	100
1/2	4.85	6.25			100
5/8	18.37	24.61			20
3/4	20.76	27.64			20
7/8	23.13	29.38			20

FIG. 54

continuous threaded rod

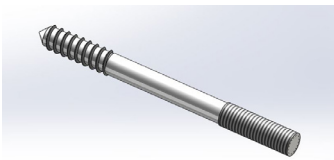


Materials/ Finishes	Plain Carbon Steel (54B)	Electro-Galvanized (54G)
	T-304 Stainless (54SS)	T-316 Stainless (54SX)
Service:	Useful in applications for attaching hangers to structural attachments.	
Ordering:	Specify figure number, finish and rod size.	
Notes:	Stainless steel rod is recommended for applications where protection from a corrosive environment is required. AVAILABLE IN 6' AND 10' LENGTHS (Plain and EG only). FULL BUNDLE QUANTITIES ON 3/8"-3/4".	

SIZE (DIA x LENGTH)	PLAIN	E.G.	SS	SX	BUNDLE QUANTITIES
1/4-20 x 6	7.86	10.62	35.44	POA	50
1/4-20 x 10	13.17	17.72	--		25
3/8-16 x 6	11.59	13.44	74.78		15
3/8-16 x 10	19.25	22.47	--		9
1/2-13 x 6	20.48	25.65	129.84		6
1/2-13 x 10	34.20	42.75	--		--
5/8-11 x 6	34.88	41.15	220.28		--
5/8-11 x 10	58.18	68.60	--		--
3/4-10 x 6	50.88	65.30	300.52		--
3/4-10 x 10	84.80	108.79	--		--
7/8-9 x 6	101.01	125.49	477.92		--
7/8-9 x 10	168.36	209.18	--		--
1-8 x 6	142.73	166.09	621.10		--
1-8 x 10	237.86	276.81	--		--
1-1/8-7 x 6	189.39	221.93	--	--	
1-1/8-7 x 10	315.69	369.88	--	--	
1-1/4-7 x 6	226.91	279.36	--	--	
1-1/4-7 x 10	378.16	465.58	--	--	
1-1/2-6 x 6	351.28	428.97	--	--	
1-1/2-6 x 10	585.47	714.88	--	--	

FIG. 55

hanger bolts

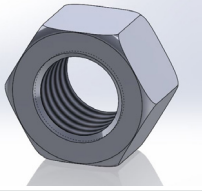


Materials/ Finishes	Plain Carbon Steel (55B)	Electro-Galvanized (55G)
	Designed for suspending pipe supports from wood structures.	
Service:	Designed for suspending pipe supports from wood structures.	
Ordering:	Specify figure number, finish and rod size.	
Notes:	FULL BOX QUANTITIES ONLY.	

SIZE	PLAIN	E.G.	STD. PKG.
1/4 x 3-1/2	2.57	3.15	100
3/8 x 3-1/2	2.44	4.15	50
3/8 x 4-1/2	2.99	4.78	50
3/8 x 6	3.36	5.71	25
3/8 x 8	4.15	6.50	25
3/8 x 10	5.71	8.15	25
3/8 x 12	6.57	8.93	25
1/2 x 4	5.15	8.58	25
1/2 x 6	5.93	9.22	25
1/2 x 8	12.51	14.58	25

FIG. 56 / 56H

standard hex nut / heavy hex nut, packaged



Materials/ Finishes	Plain Carbon Steel (56B)	Electro-Galvanized (56G)
	T-304 Stainless (56SS)	T-316 Stainless (56SX)
Variants:	Plain Carbon Steel (56HB)	Electro-Galvanized (56HB)
	T-304 Stainless (56HSS)	T-316 Stainless (56HSX)
Service:	Fastener	
Ordering:	Specify figure number, finish and rod size.	
Notes:	FULL BOX QUANTITIES ONLY	

FIG. 56					
SIZE	PLAIN	E.G.	SS	SX	STD. PKG.
1/4	0.29	0.36	--	POA	100
3/8	0.36	0.44	1.23		100
1/2	0.73	0.87	2.40		50
5/8	1.53	2.18	3.86		25
3/4	2.33	3.14	6.26		20
7/8	3.49	4.30	9.39		15
1	5.82	6.34	--		10
1-1/8	11.08	13.46	--		10
1-1/4	12.53	15.29	--		5
1-1/2	20.90	21.99	--		10

FIG. 56H					
SIZE	PLAIN	E.G.	SS	SX	STD. PKG.
1/4	0.44	0.44	POA	POA	100
3/8	0.51	0.58			100
1/2	1.23	1.31			50
5/8	2.12	2.49			25
3/4	3.92	4.22			20
7/8	6.13	7.28			15
1	9.82	11.73			10
1-1/8	16.95	19.59			10
1-1/4	17.04	19.94			5
1-1/2	31.89	36.62			10

FIG. 57

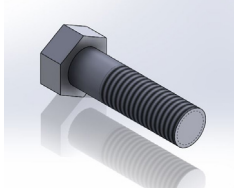
hanger rod



Materials/ Finishes	Plain Carbon Steel (57B)	Electro-Galvanized (57G)
	Hot-Dip Galvanized (57HDG)	T-304 Stainless (57SS)
	T-316 Stainless (57SX)	
Variants:	Double Right Hand Threads (56RR)	Double Left Hand Threads(56LL)
	Left and Right Hand Threads (56RL)	
Service:	Designed for use in pipe hanger assemblies.	
Ordering:	Specify figure number, finish, thread direction, rod size, length and thread length.	
Notes:	Threads are not chased on hot-dip galvanized rod. PRICED ON APPLICATION	

FIG. 58

hex head bolt



Materials/Finishes	Plain Carbon Steel (58B)	Electro-Galvanized (58G)
	T-304 Stainless (58SS)	T-316 Stainless (58SX)
Service:	Designed for use as a fastening device.	
Ordering:	Specify figure number, rod size and length.	
Notes:	Other sizes available. Priced on application.	

SIZE		PLAIN	E.G.	SS	SX	STD. PKG.
DIAMETER	LENGTH					
1/2	1-1/2	1.53	--	POA	POA	50
	1-3/4	1.61	1.83			50
	2	2.05	2.18			50
	2-1/2	2.33	2.55			50
	2-3/4	3.49	--			50
	3	3.14	3.49			50

SIZE		PLAIN	E.G.	SS	SX	STD. PKG.
DIAMETER	LENGTH					
5/8	1-1/2	2.92	3.14	POA	POA	25
	2	3.14	3.36			25
	2-1/4	3.49	3.71			25
	2-1/2	3.64	4.08			25
	2-3/4	5.04	5.31			25
	3	5.17	5.39			25
	3-1/4	5.31	5.60			25
	3-1/2	5.53	5.82			25
	3-3/4	5.75	6.13			25
	4	6.78	7.13			25
	4-1/2	POA	8.31			25
	5	7.06	9.77			25

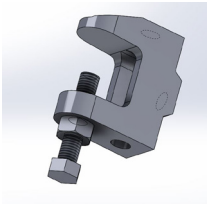
SIZE		PLAIN	E.G.	SS	SX	STD. PKG.
DIAMETER	LENGTH					
3/4	2	5.60	6.85	POA	POA	20
	2-1/4	5.82	7.57			20
	2-1/2	6.62	7.94			20
	2-3/4	7.06	8.44			20
	3	7.22	8.59			20
	3-1/4	7.35	8.81			20
	3-1/2	7.57	9.10			20
	3-3/4	8.73	9.55			20
	4	9.77	9.77			20
	4-1/2	10.55	11.35			30
	5	10.86	12.09			30
6	13.62	14.99	30			

SIZE		PLAIN	E.G.	SS	SX	STD. PKG.
DIAMETER	LENGTH					
7/8	3	11.42	12.53	POA	POA	15
	3-1/4	11.87	13.46			15
	3-1/2	12.82	14.71			15
	4	13.83	21.55			15
	4-1/2	14.77	24.89			15
	5	17.47	30.64			15

SIZE		PLAIN	E.G.	SS	SX	STD. PKG.
DIAMETER	LENGTH					
1	3	14.99	18.85	POA	POA	10
	3-1/2	16.17	--			10
	4	18.50	21.55			10
	4-1/2	20.59	24.89			10
	5	26.50	30.64			10

FIG. 60

1/4" beam clamp

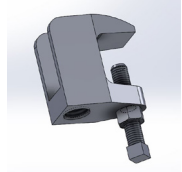


Materials/Finishes:	Electro-Galvanized Malleable Iron (60G)
Service:	Designed to attach 1/4" hanger rod from metal beams, channel or angle iron.
Ordering:	Specify figure number, finish and rod size.

ROD SIZE	E.G.	STD. PKG.
1/4	4.01	100

FIG. 61

wide mouth beam clamp

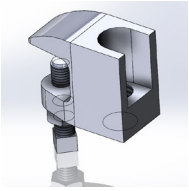


Materials/ Finishes	Plain Malleable Iron (61B)	Electro-Galvanized (61G)
Variants:	Plain Malleable Iron: Domestic, 3/8" & 1/2" (61BD) Electro-Galvanized: Domestic, 3/8" & 1/2" (61GD)	
Service:	Designed to attach hanger rod to the top or bottom flange of a beam or bar.	
Approvals:	U.L. - U.L.C. listed 3/8" and 1/2" (1/2 for 4" IPS max). FM approved for 3/8" only. Complies with Federal Specification A-A-1192A (Type# 19) and Manufacturers' Standardization Society MSS SP-58 and SP-69 (Type# 19).	
Ordering:	Specify figure number, finish and rod size.	
Notes:	See MSS SP-69 for proper set screw torque recommendations.	

ROD SIZE	PLAIN	PLAIN (61BD)	E.G.	E.G. (61GD)	STD. PKG.
3/8	6.29	11.94	7.51	13.87	100
1/2	7.85	13.58	10.50	19.87	100
5/8	14.44	--	19.87	--	50
3/4	18.87	--	23.94	--	50

FIG. 62

small mouth beam clamp

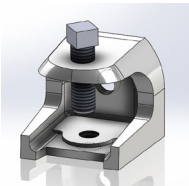


Materials/ Finishes	Plain Malleable Iron: 3/8" - 7/8" (62B) T-304 Stainless: 1/4" - 3/4" (62SS)	Electro-Galvanized: 3/8" - 7/8" (62G) T-316 Stainless: 1/4" - 3/4" (62SX)
Variants:	N/A	
Service:	Designed to attach hanger rod to the top or bottom flange of a beam or bar joist where flange thickness does not exceed 5/8 of an inch.	
Approvals:	U.L. - U.L.C. listed 3/8 and 1/2 (1/2 for 4" IPS max). FM approved for 3/8 only. Complies with Federal Specification A-A-1192 A (Type# 19) and Manufacturers' Standardization Society MSS SP-58 and SP-69 (Type# 19).	
Ordering:	Specify figure number, finish and rod size.	
Notes:	Set screw is of hardened steel. See MSS SP-69 for proper set screw recommendations. Stainless steel beam clamps are recommended for corrosive environments.	

ROD SIZE	PLAIN	E.G.	SS	SX	STD. PKG.
1/4	--	--	60.39	69.83	100
3/8	3.93	4.86	60.39	69.83	100
1/2	4.86	5.93	69.18	80.33	100
5/8	11.36	16.30	--	171.73	50
3/4	15.36	21.95	--	197.55	50
7/8	17.72	24.73	--	--	50

FIG. 63

electrical rod support clamp

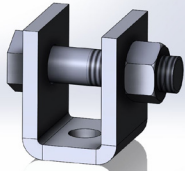
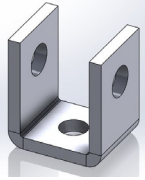


Materials/ Finishes	Electro-Galvanized Malleable Iron (63G)	T-316 Stainless: 1/4", 3/8" and 1/2" (63SX)
Service:	Designed to attach hanger rod to beam or framework where material thickness does not exceed 1/2 inch. Rod tap on both bottom and back of clamp.	
Ordering:	Specify figure number, finish and rod size	

ROD SIZE	E.G.	SX	STD. PKG.
1/4	4.01	68.12	50
5/16	7.94	72.77	50
3/8	12.94	133.22	25
1/2	37.53	195.26	25

FIG. 66L/66W

welding beam attachment with and without nut and bolt

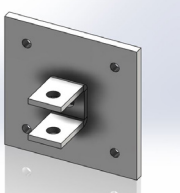


Materials/ Finishes	Plain Carbon Steel (66LB)	Electro-Galvanized (66LG)
	Hot-Dip Galvanized (66LHDG)	T-304 Stainless (66LSS)
	T-316 Stainless (66LSX)	
Variants:	Plain Carbon Steel w/ bolt (66WB)	Electro-Galvanized w/ bolt (66WG)
	Hot-Dip Galvanized w/ bolt (66WHDG)	T-304 Stainless w/ bolt (66WSS)
	T-316 Stainless w/ bolt (66WSX)	
Service:	Designed for the attachment of hanger rod to the bottom flange of steel beams where heavy loads and large hanger rod sizes are required.	
Approvals:	Complies with Federal Specification WW-H-171-E (Type# 22), A-A-1192A (Type# 22), and Manufacturers' Standardization Society MSS SP-58 and SP-69 (Type# 22).	
Notes:	Can be welded in either the upright or inverted position when ordered with hardware. 3/8 to 1-1/8 supplied with bolts and nuts. 1-1/4 and larger supplied with pins and cotters. FIG. 66L and 66W size 2 beam attachment will be welded rather than formed.	

SIZE	PLAIN 66L	PLAIN 66W	E.G.	H.D.G.	SS	SX
3/8	16.69	25.65	POA	POA	POA	POA
1/2	16.69	25.65				
5/8	17.39	28.54				
3/4	26.35	43.55				
7/8	36.08	55.03				
1	81.38	122.01				
1-1/8	105.66	167.85				
1-1/4	200.26	298.58				
1-1/2	344.07	506.64				

FIG. 67

concrete clevis plate

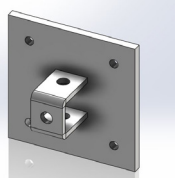


Materials/ Finishes	Plain Carbon Steel (67B)	Electro-Galvanized (67G)
	Hot-Dip Galvanized (67HDG)	T-304 Stainless (67SS)
	T-316 Stainless (67SX)	
Service:	Designed for the attachment to concrete ceilings where flexibility is desired. Normally used in conjunction with FIG. 13 weldless eye nut or FIG. #26W welded eye rod.	
Ordering:	Specify figure number, finish and rod size.	

SIZE	ALL FINISHES
3/8	POA
1/2	
5/8	
3/4	
7/8	
1	
1-1/8	
1-1/4	
1-1/2	

FIG. 68

concrete rod attachment

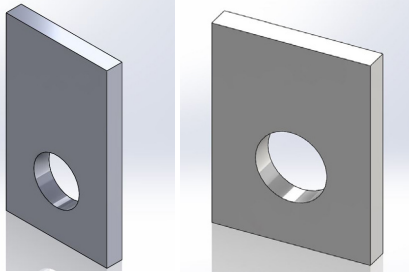


Materials/ Finishes	Plain Carbon Steel (68B)	Electro-Galvanized (68G)
	Hot-Dip Galvanized (68HDG)	T-304 Stainless (68SS)
	T-316 Stainless (68SX)	
Service:	Designed for the attachment of hanger rod to concrete ceilings where vertical adjustment of hanger is desired.	
Ordering:	Specify figure number, finish and rod size.	

SIZE	ALL FINISHES
3/8	POA
1/2	
5/8	
3/4	
7/8	
1	
1-1/8	
1-1/4	
1-1/2	

FIG. 69L / 69S

structural welding lug, long / short

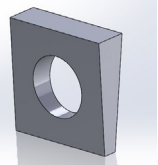


Materials/ Finishes	Plain Carbon Steel (69SB)	Electro-Galvanized (69SG)
	Hot-Dip Galvanized (69SHDG)	T-304 Stainless (69SSS)
	T-316 Stainless (69SSX)	
Variants:	Plain Carbon Steel (69LB)	Electro-Galvanized (69LG)
	Hot-Dip Galvanized (69LHDG)	T-304 Stainless (69LSS)
	T-316 Stainless (69LSX)	
Service:	Designed to be welded to structural members and used in conjunction with figure #909 forged steel clevis with pin and cotters.	
Approvals:	Complies with Federal Specification WW-H-171-E (Type# 57), A-A-1192A (Type# 57), and Manufacturers' Standardization Society MSS SP-58 and SP-69 (Type# 57).	
Ordering:	Specify figure number, finish and rod size.	
Notes:	Radiused edge available.	

SIZE	PRICE EACH		STD. PKG
	SHORT	LONG	
1/2	POA	POA	BULK
5/8			BULK
3/4			BULK
7/8			BULK
1			BULK
1-1/4			BULK
1-1/2			BULK

FIG. 72

bevel washer



Materials/ Finishes	Plain Carbon Steel (72B)	Electro-Galvanized (72G)
	Service: Designed to compensate for taper of "S" shape beam flanges so that bearing surface of bolt or nut will seat flush.	
Ordering:	Specify figure number and bolt size.	

ROD SIZE	E.G.
3/8	9.10
1/2	9.39
5/8	9.77
3/4	10.12
7/8	16.08

FIG. 73

drop in anchor

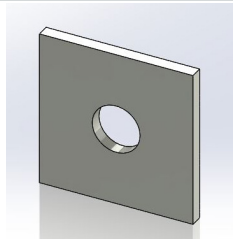


Materials/ Finishes	Electro-Galvanized (73G)	T-304 Stainless (73SS)
	T-316 Stainless (73SX)	
Service:	Designed to be inserted into a pre-drilled hole and set by means of a setting tool to provide attachment point for bolts or hanger rods.	
Ordering:	Specify figure number, finish and bolt or rod size. FULL BOX QUANTITIES ONLY ON SIZES 3/8" AND 1/2". SET TOOL IN BOX.	

SIZE	E.G.	SS	SX	STD. PKG
3/8	1.46	POA	POA	50
1/2	3.49			50
5/8	12.53			25
3/4	27.73			10

FIG. 75

steel washer plate

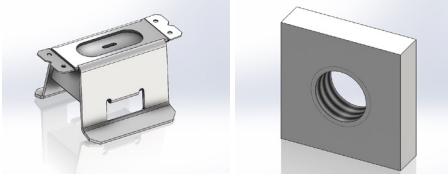


Materials/ Finishes	Plain Carbon Steel (75B)	Electro-Galvanized (75G)
	T-304 Stainless (75SS)	T-316 Stainless (75SX)
Service:	Designed as a heavy duty washer to suspend hanger rods.	
Ordering:	Specify figure number, finish, thickness, length, width and rod size.	
Notes:	Other dimensions and sizes available upon request. PRICES ARE FOR PLAIN FINISH. OTHER FINISHES AVAILABLE AND ARE PRICED ON APPLICATION.	

ROD SIZE	2 x 2 x 1/4	3 x 3 x 1/4	4 x 4 x 1/4	4 x 4 x 3/8
	PRICE/	PRICE/	PRICE/	PRICE/
3/8	4.31	7.27	11.60	21.39
1/2	4.31	7.27	11.60	21.39
5/8	--	7.42	11.60	21.39
3/4	--	7.73	11.92	21.84
7/8	--	8.25	12.24	22.23
1	--	8.45	12.50	22.68

FIG. 81

concrete insert



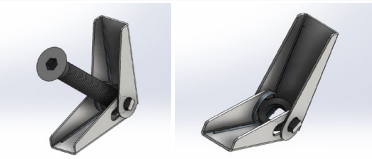
Materials/ Finishes	Plain Carbon Steel (81B)	Electro-Galvanized (81G)
Variants:	Plain Carbon Steel Insert Nut (81NB) Electro-Galvanized Insert Nut (81NG)	
Service:	Heavy gauge insert box is nailed to concrete form. When concrete has set, knock out plug can be removed and insert nut installed. Side openings accommodate up to 1/2" reinforcing rods.	
Approvals:	FM approved on sizes 3/8" and 1/2". Complies with Federal Specification WW-H-171-E (Type# 19), A-A-1192A (Type# 18), and Manufacturers' Standardization Society MSS SP-58 (Type# 18) and SP-69 (Type# 18).	
Ordering:	Specify figure number and finish. For insert nuts, specify figure number, rod size and finish.	

INSERT BOX ONLY	PLAIN	E.G.	STD. PKG.
--	8.72	11.25	45

NUT SIZE	PLAIN	E.G.	STD. PKG.
1/4	2.08	2.72	100
3/8	2.08	2.72	100
1/2	2.26	3.10	100
5/8	3.10	3.79	100
3/4	3.41	4.23	100

FIG. 83/84

spring wing toggle with bolt / without bolt



Materials/ Finishes	Electro-Galvanized (83G)
Variants:	Electro-Galvanized: Toggle only (84G)
Service:	Designed to be used with threaded rod in hollow walls.
Ordering:	Specify figure number and size. FULL BOX QUANTITIES ONLY.

FIG. 83 SPRING WING TOGGLE AND BOLT		
SIZE	E.G.	STD. PKG.
1/4 x 3	3.08	100
3/8 x 4	6.57	50

FIG. 84 SPRING WING TOGGLE HEAD ONLY		
SIZE	E.G.	STD. PKG.
1/4	2.78	100
3/8	4.95	50

FIG. 95

offset pipe clamp



Materials/ Finishes	Plain Carbon Steel (95B)	Electro-Galvanized (95G)
	Hot-Dip Galvanized (95HDG)	T-304 Stainless (95SS)
	T-316 Stainless (95SX)	
Service:	Designed for supporting horizontal or vertical pipe lines at a fixed distance from wall or floor. This clamp can be furnished with "B" dimensions to suit field conditions.	
Ordering:	Specify figure number, pipe type, finish and pipe size	
Notes:	Custom B dimension available. Also available in DIP/C900 (95DIP) and OD (95OD) sizes.	

SIZE	PLAIN	E.G./H.D.G./SS/SX
3/4	84.47	POA
1	84.94	
1-1/4	85.51	
1-1/2	90.66	
2	97.43	
2-1/2	101.81	
3	104.12	
4	112.57	
5	131.31	
6	156.06	
8	182.42	
10	POA	

FIG. 97

extended pipe clamp



Materials/ Finishes:	Plain Carbon Steel (97B)	Electro-Galvanized (97G)
	Hot-Dip Galvanized (97HDG)	T-304 Stainless (97SS)
	T-316 Stainless (97SX)	
Service:	Designed for suspending or supporting pipe lines where exact distance between structure and pipe cannot be determined until installation.	
Ordering:	Specify figure number, finish and pipe size	
Notes:	Custom B dimension available. Also available in Ductile Iron Pipe (97DIP) and OD (97OD)sizes.	

SIZE	PLAIN	E.G./H.D.G/ SS/SX
3/4	90.33	POA
1	93.43	
1-1/4	96.58	
1-1/2	107.28	
2	110.89	
2-1/2	118.37	
3	120.88	
4	134.48	
5	153.29	
6	171.27	
8	220.56	
10	POA	

FIG. 110

adjustable clevis hanger, light weight



Materials/ Finishes:	Plain Carbon Steel (110B)	Electro-Galvanized (110G)
	Plastic Coated (110PC)	
Variants:	Electro-Galvanized, Imported: (110GI)	
Service:	Designed for the suspension of non insulated, stationary pipe lines.	
Approvals:	Complies with Federal Specification WW-H-171-E (Type# 12) and Manufacturers' Standardization Society MSS SP-58 and SP-69 (Type# 1). Galvanized only.	
Ordering:	Specify figure number, material, finish type and pipe size.	
Notes:	Upper locknut must be tightened securely to assure proper hanger performance. Conduit comes in various outside diameters. Verify outside diameter of conduit is equal to outside diameter of schedule 40 steel pipe.	

PIPE SIZE	PLAIN	E.G.	PC.	GI	STD. PKG.
3/8	2.45	2.90	11.73	--	100
1/2	2.63	2.90	11.92	2.65	100
3/4	2.63	2.90	11.99	2.72	100
1	2.70	2.97	12.50	2.94	100
1-1/4	2.96	3.22	13.22	3.15	100
1-1/2	3.02	3.61	14.42	3.29	100
2	3.22	4.06	16.30	3.64	100
2-1/2	6.19	7.99	25.00	6.87	50
3	6.97	9.54	31.11	8.58	25
3-1/2	8.18	10.76	46.52	--	25
4	8.25	11.02	31.64	10.93	25
5	--	--	48.34	--	25
6	--	--	76.61	--	10
7	--	--	119.21	--	10
8	--	--	122.43	--	10
10	--	--	191.94	--	BULK
12	--	--	255.55	--	BULK

FIG. 110CT

clevis hanger for copper tubing

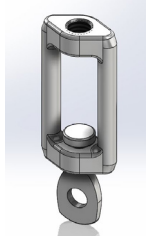


Materials/ Finishes:	Copper Plated Carbon Steel (110CT)
Variants:	Copper Epoxy Coated <i>Copper-Gard</i> , Imported: (110CTI)
Service:	Designed for the suspension of stationary copper tubing.
Approvals:	Complies with Federal Specifications WW-H-171-E (Type# 1), A-A-1192 A (Type# 1), and Manufacturers' Standardization Society MSS SP-58 and SP-69 (Type# 1).
Ordering:	Specify figure number and tube size
Notes:	COPPER-GARD products offer superior corrosion protection due to the epoxy coating over electro-galvanized steel. The alternative copper plating, that has been done historically, identifies the product and is not intended for protection. Refer to MSS SP-58, 13.3.

TUBE SIZE	COPPER PLATED	COPPER EPOXY COATED	STD. PKG.
1/2	3.55	2.99	100
3/4	3.61	3.08	100
1	3.80	3.21	100
1-1/4	4.19	3.72	100
1-1/2	4.31	3.84	100
2	5.15	4.58	100
2-1/2	11.34	10.88	50
3	11.60	11.87	50
3-1/2	12.69	15.57	25
4	14.70	15.52	25
5	30.54	32.09	25
6	35.37	37.75	10

FIG. 114

turnbuckle adjuster

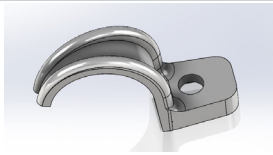


Materials/ Finishes:	Plain Malleable Iron (114B)	Electro-Galvanized (114G)
Service:	Designed to provide vertical rod adjustment.	
Approvals:	Complies with Federal Specification WW-H-171-E (Type# 15), A-A-1192 A (Type# 15) and Manufacturers' Standardization Society MSS SP-58 and SP-69 (Type# 15).	
Ordering:	Specify figure number and rod size.	

ROD SIZE	PLAIN	E.G.	STD. PKG.	WGT EACH (LBS)
3/8	11.21	POA	100	0.516
1/2	14.22		50	0.545

FIG. 126

one hole clamp

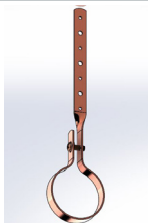


Materials/ Finishes:	Electro-Galvanized Malleable Iron (126G)
Service:	Designed for the support of conduit, cable or pipe on walls or sides of beams. Not recommended for horizontal use on ceilings or bottom of beams.
Ordering:	Specify figure number and pipe size.

PIPE SIZE	E.G.	STD. PKG.	WGT EACH (LBS)
1/2	1.35	100	0.04
3/4	1.65	100	0.05
1	2.14	100	0.09
1-1/4	2.86	100	0.12
1-1/2	3.36	100	0.16
2	6.07	50	0.25
2-1/2	11.01	50	0.49
3	16.08	25	0.82
4	36.68	10	1.30

FIG. 127CT / 127CTP

natick hanger, copper tube size



Materials/ Finishes:	Copper Epoxy Coated (<i>Copper-Gard</i>) Carbon Steel (127CT) Copper Plated Carbon Steel (127CTP)
Service:	Designed for the support of copper tube supply lines. Attaches to wood members.
Ordering:	Specify figure number, finish, tube size and length. FULL CARTONS ONLY.

TUBE SIZE	EPOXY COATED	COPPER PLATED	STD. PKG.	WGT EACH (LBS)
1/2 X 6	2.86	2.86	25	0.075
3/4 X 6	2.94	2.94	25	0.075
1 X 6	2.99	2.99	25	0.090
1-1/4 X 6	3.36	3.36	25	0.095
1-1/2 X 6	3.51	3.51	25	0.110
2 X 6	3.79	3.79	25	0.125
1/2 X 12	3.42	3.42	25	0.130
3/4 X 12	3.57	3.57	25	0.130
1 X 12	3.72	3.72	25	0.140
1-1/4 X 12	4.07	4.07	25	0.150
1-1/2 X 12	4.22	4.22	25	0.160
2 X 12	4.50	4.50	25	0.170

FIG. 129CT / 129CTP

van (bell type) hanger for copper tube



Materials/ Finishes:	Copper Epoxy Coated (<i>Copper-Gard</i>) Carbon Steel (129CT)
	Copper Plated Carbon Steel (129CTP)
	Solid Brass (129CTSB)
Service:	Designed to support copper tubing to wall. Supports the pipe 1" from the back of pipe to wall. The wood screw is concealed upon installation.
Ordering:	Specify figure number, finish and tube size. FULL CARTONS ONLY.

TUBE SIZE	EPOXY COATED	COPPER PLATED	SOLID BRASS	STD. PKG.	WGT EACH (LBS)
1/2	2.57	2.57	11.36	25	0.070
3/4	2.72	2.72	11.87	25	0.075
1	2.86	2.86	12.30	25	0.075
1-1/4	3.64	3.64	--	25	0.080
1-1/2	4.50	4.50	--	25	0.100
2	7.29	7.29	--	25	0.115

FIG. 131CT / 131CTP

milford hanger for copper tube



Materials/ Finishes:	Copper Epoxy Coated (<i>Copper-Gard</i>) Carbon Steel (131CT)
	Copper Plated Carbon Steel (131CTP)
Service:	Designed for the support of copper tube supply lines. Attaches to wood members.
Ordering:	Specify figure number, finish, tube size and length. FULL CARTONS ONLY.

TUBE SIZE	EPOXY COATED	COPPER PLATED	STD. PKG.	WGT EACH (LBS)
1/2 X 6	2.86	2.86	25	0.085
3/4 X 6	2.99	2.99	25	0.090
1 X 6	3.08	3.08	25	0.090
1-1/4 X 6	4.86	4.86	25	0.095
1-1/2 X 6	5.00	5.00	25	0.100
2 X 6	5.37	5.37	25	0.125
1/2 X 12	4.07	4.07	25	0.130
3/4 X 12	4.22	4.22	25	0.130
1 X 12	4.36	4.36	25	0.135
1-1/4 X 12	6.07	6.07	25	0.140
1-1/2 X 12	6.73	6.73	25	0.145
2 X 12	7.37	7.37	25	0.175

FIG. 136

right angle clamp



Materials/ Finishes:	Hot-Dip Galvanized Malleable Iron (136G)
	T-316 Stainless Steel (136SX)
Service:	Designed for anchoring pipe or conduit at a right angle to structural members.
Ordering:	Specify figure number, pipe size and finish.

PIPE SIZE	H.D.G	SX	STD. PKG.	WGT EACH (LBS)
1/2	11.57	75.05	50	0.40
3/4	11.78	81.41	50	0.42
1	15.09	83.34	50	0.48
1-1/4	15.57	104.78	50	0.55
1-1/2	17.23	121.78	50	0.57
2	23.59	157.74	50	0.89
2-1/2	25.66	189.04	25	1.10
3	27.58	218.98	25	1.14
3-1/2	34.38	POA	25	1.30
4	36.46	251.80	25	1.40

FIG. 137

standard ips / dip sized u-bolt with 4 hex nuts



Materials/ Finishes:	Plain Carbon Steel (137B)	Electro-Galvanized (137G)
	Hot-Dip Galvanized (137HDG)	Plastic Coated (137PC)
	T-304 Stainless Steel (137SS)	T-316 Stainless Steel (137SX)
Variants:	Plain Carbon Steel for DIP (137DIPB)	Hot-Dip Galvanized for DIP (137DIPHDG)
	T-304 Stainless Steel for DIP (137DIPSS)	T-316 Stainless Steel for DIP (137DIPSSX)
	Pipe Gard (137PG), Pipe Gard for DIP (137DIPPG) - Please contact factory for details.	
	Service: Designed for support or guide of heavy loads.	
Approvals:	Complies with Federal Specifications WW-H-171-E (Type# 24), A-A-1192 A (Type# 24), and MSS SP-58 and SP-69 (Type# 24).	
Ordering:	Specify figure number, finish and pipe size.	
Notes:	Available in DIP sizes and special dimensions - Priced on application. Contact factory for details.	

PIPE SIZE	ROD SIZE	PLAIN	E.G.	H.D.G.	SS	SX	STD PKG
1/2	1/4	3.21	4.07	2.88	13.36	POA	100
3/4	1/4	3.29	4.15	3.06	13.65		100
1	1/4	3.64	4.29	3.28	13.90		100
1-1/4	3/8	4.15	5.08	6.30	20.82		100
1-1/2	3/8	4.64	5.29	6.65	21.84		100
2	3/8	4.95	5.65	7.16	24.24		100
2-1/2	1/2	9.01	9.50	12.50	44.28		50
3	1/2	9.50	11.01	14.10	44.58		50
3-1/2	1/2	10.08	11.87	--	--		50
4	1/2	10.44	12.01	15.55	51.08		50
5	1/2	11.30	14.94	19.56	84.23		25
6	5/8	21.81	26.37	35.01	108.47		25
8	5/8	25.16	30.29	42.36	135.90		10
10	3/4	46.40	52.47	68.71	224.83		10
12	7/8	75.62	82.63	115.31	352.79		10
14	7/8	84.34	108.35	--	--		BULK
16	7/8	99.99	135.16	--	--		BULK
18	1	150.30	199.69	--	--		BULK
20	1	203.06	253.37	--	--		BULK
24	1	219.50	312.69	--	--		BULK

FIG. 146

offset j-hook

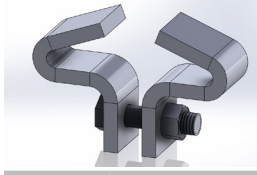


Materials/ Finishes:	Plain Carbon Steel (146B)	Electro-Galvanized (146G)
	T-304 Stainless Steel (146SS)	T-316 Stainless Steel (146SX)
Service:	Designed for supporting light pipe loads with 1" offset from wall to provide clearance for fittings.	
Ordering:	Specify figure number, finish and pipe size. 100 PC MINIMUM ORDER.	

PIPE SIZE	ALL FINISHES
3/4	POA
1	
1-1/4	
1-1/2	
2	
2-1/2	
3	
4	
5	
6	

FIG. 150

beam clamp

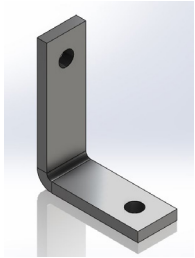


Materials/ Finishes:	Hot-Dip Galvanized (150HDG)	T-304 Stainless Steel (150SS)
	T-316 Stainless Steel (150SX)	
Service:	Designed for attaching hanger rods from the center of an I-beam. Normally used with figure 13 weldless eye nut.	
Approvals:	Complies with Federal Specifications WW-H-171-E (Type# 21), A-A-1192 A (Type# 21), and MSS SP-58 and SP-69 (Type# 21).	
Ordering:	Specify figure number, finish, clamp size, flange width, beam thickness.	
Notes:	Not available for beams greater than 8" wide. PRICED ON APPLICATION.	

CLAMP SIZE	ALL FINISHES
1	POA
2	

FIG. 152

return line angle

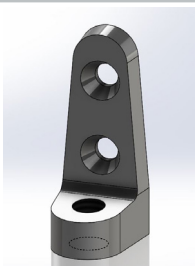


Materials/ Finishes:	Plain Carbon Steel (152B)	Electro-Galvanized (152G)
Service:	Designed to enable the field mechanic to obtain different distances from wall to center of pipe line by turning the angle to distance required. They are made in light and heavy material and will support pipes 2, 3 or 4 inches from wall to center of pipe.	
Approvals:	Complies with Federal Specifications WW-H-171-E (Type# 21), A-A-1192 A (Type# 21), and MSS SP-58 and SP-69 (Type# 21).	
Ordering:	Specify figure number, finish and size number.	

SIZE	PLAIN	E.G.
1	12.37	14.62
2	12.94	14.95
3	22.35	POA
4	22.88	
5	23.13	
6	25.57	

FIG. 153

side beam connector



Materials/ Finishes:	Plain Carbon Steel (153B)	Electro-Galvanized (153G)
Service:	Designed for mounting to sides of wood beams. Bottom hole is tapped for rod.	
Ordering:	Specify figure number, finish and rod size.	

SIZE	PLAIN	E.G.	STD PKG
3/8	2.44	4.15	100
1/2	5.58	7.72	100

FIG. 155

steel beam clamp

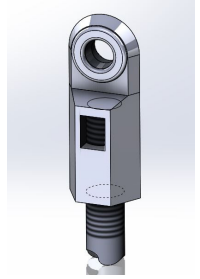


Materials/ Finishes:	Electro-Galvanized (155G)
Service:	Designed for attaching hanger rods to be centered under beam flanges. The clamp provides a vertical adjustment of approximately 2 inches.
Ordering:	Specify figure number, finish, clamp size, beam thickness and flange width.
Notes:	Not available for beams greater than 8 inches wide.

CLAMP SIZE	ROD SIZE	E.G.
2	1/2	POA
3	5/8	
4	3/4	
5	7/8	

FIG. 157

extension piece

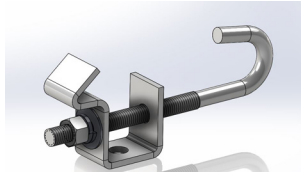


Materials/ Finishes:	Plain Carbon Steel (157B)	Electro-Galvanized (157G)
Service:	Designed for attaching hanger rod to various type of attachments. Allows a 1 inch vertical adjustment of the rod.	
Ordering:	Specify figure number, finish and rod size.	

SIZE	PLAIN	E.G.
3/8	6.65	7.94
1/2	11.36	13.58
5/8	13.37	15.94
3/4	22.37	26.30
7/8	27.30	35.16

FIG. 159

adjustable rod beam clamp

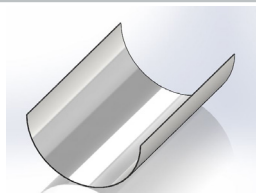


Materials/ Finishes:	Plain Carbon Steel (159B)	Electro-Galvanized (159G)
Service:	Designed to be used in the suspension of a hanger rod from an I-beam. Recommended for flange widths from 4 inches minimum to 8 inches maximum.	
Approvals:	Complies with Federal Specifications WW-H-171-E (Type# 54), A-A-1192 A (Type# 27), and MSS SP-58 and SP-69 (Type# 27).	
Ordering:	Specify figure number, finish and rod size.	

SIZE	PLAIN	E.G.	STD. PKG.
3/8	24.52	31.87	25
1/2	32.38	42.10	25
5/8	40.10	52.25	25

FIG. 167

pipe covering protection shield

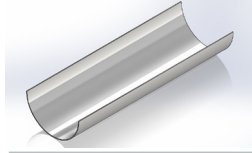


Materials/ Finishes:	Pre-Galvanized (167G)	T-304 Stainless Steel (167SS)
	T-316 Stainless Steel (167SX)	
Service:	Designed for outside of foam or fiberglass insulation on stationary pipe lines (not designed for pipe rollers) to prevent crushing of insulation without breaking the vapor barrier.	
Ordering:	Specify figure number and shield size. STAINLESS SHIELDS PRICED ON APPLICATION.	

SIZE	SHIELD ID	PRICE / MILL HDG	SIZE	SHIELD ID	PRICE / MILL HDG
0	1-7/8	6.43	17	14	62.62
1	2-3/8	6.56	18	15	70.15
2	2-7/8	7.40	19	16	90.00
3	3-1/2	11.43	20	17	98.01
4	4	13.06	21	18	128.99
5	4-1/2	13.65	22	19	142.89
6	5	15.58	23	20	147.10
7	5-5/8	17.81	24	21	157.33
8	6-5/8	19.74	25	22	170.44
9	7-5/8	24.49	26	23	176.28
10	8-5/8	26.71	27	24	183.01
13	9-5/8	35.50	28	26	190.54
14	10-3/4	39.77	29	27	203.11
15	11-3/4	44.88	30	28	216.35
16	12-3/4	48.37			

FIG. 167MSS

“mss” pipe covering protection shield

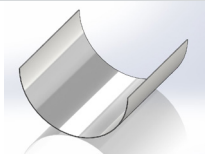


Materials/ Finishes:	Pre-Galvanized (167MSSG)	T-304 Stainless Steel (167MSSSS)
	T-316 Stainless Steel (167MSSSX)	
Service:	Designed for outside of foam or fiberglass insulation on stationary pipe lines (not designed for pipe rollers) to prevent crushing of insulation without breaking the vapor barrier.	
Ordering:	Specify figure number and shield size. STAINLESS SHIELDS PRICED ON APPLICATION.	

SIZE	SHIELD ID	PRICE / MILL HDG	SIZE	SHIELD ID	PRICE / MILL HDG
X1A	1-7/8	12.27	14C	12-3/4	150.11
1A	2-3/8	12.52	15C	14	160.70
2A	2-7/8	13.06	16C	15	167.73
3A	3-1/2	13.83	17C	16	182.78
4A	4	15.04	18C	17	191.86
5A	4-1/2	16.01	19C	18	277.35
6A	5	18.59	20C	19	313.33
7A	5-5/8	20.21	21C	20	350.69
8A	6-5/8	29.60	22C	21	364.52
9A	7-5/8	33.93	23C	22	383.89
10A	8-5/8	38.81	24C	23	408.68
9B	7-5/8	51.20	25C	24	163.73
10B	8-5/8	54.44	26C	26	553.49
11B	9-5/8	64.85	27C	27	565.83
12B	10-3/4	72.92	28C	28	590.43
13C	11-3/4	138.55			

FIG. 168

short pipe covering protection shield

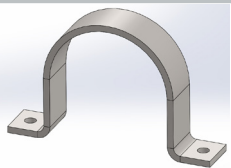


Materials/ Finishes:	Pre-Galvanized (168G)	T-304 Stainless Steel (168SS)
	T-316 Stainless Steel (168SX)	
Service:	Designed for outside of foam or fiberglass insulation on stationary pipe lines (not designed for pipe rollers) to prevent crushing of insulation without breaking the vapor barrier.	
Ordering:	Specify figure number and shield size. STAINLESS SHIELDS PRICED ON APPLICATION. MINIMUM ORDER OF 100 PCS.	

SIZE	SHIELD ID	PRICE / MILL HDG
0	1-7/8	7.04
1	2-3/8	7.64
2	2-7/8	8.90
3	3-1/2	10.59
4	4	12.03
5	4-1/2	12.82
6	5	14.86
7	5-5/8	16.12
8	6-5/8	18.35

FIG. 180

short clip



Materials/ Finishes:	Plain Carbon Steel (180B)	Electro-Galvanized (180G)
	Hot-Dip Galvanized (180HDG)	T-304 Stainless Steel (180SS)
	T-316 Stainless Steel (180SX)	
Service:	Designed to support pipe close to ceiling or wall.	
Approvals:	Complies with Manufacturers' Standardization Society MSS SP-58 & SP-69 (Type# 26)	
Ordering:	Specify figure number, finish and pipe size. E.G., H.D.G. AND STAINLESS PRICED ON APPLICATION.	
Notes:	Sizes 1/2" to 2" are furnished with two screw holes. Sizes 2 1/2" to 4" are furnished with four screw holes. * Radius edge 1/2" to 2" with 2 holes. * Square edge 2 1/2" to 4" with four holes	

PIPE SIZE	PLAIN	E.G./ H.D.G./SS/ SX
1/2	13.73	POA
3/4	13.85	
1	13.92	
1-1/4	15.53	
1-1/2	17.58	
2	22.54	
2-1/2	58.19	
3	60.50	
3-1/2	52.84	
4	59.60	

FIG. 189

double bolt pipe clamp



Materials/ Finishes:	Plain Carbon Steel (189B)	Electro-Galvanized (189G)
	Hot-Dip Galvanized (189HDG)	T-304 Stainless Steel (189SS)
	T-316 Stainless Steel (189SX)	Alloy Steel: ASTM A387 Grade 22 (189A)
Service:	Designed for the suspension of insulated pipe lines. Normally used with weldless eye nut, figure #13.	
Approvals:	Complies with Federal Specifications WW-H-171-E (Type# 3), A-A-1192 A (Type# 3), and MSS SP-58 and SP-69 (Type# 3).	
Ordering:	Specify figure number, finish and pipe size.	

PIPE SIZE	PLAIN	EG	H.D.G./A/ SS/SX
1/2	28.03	36.15	POA
3/4	28.15	36.40	
1	28.29	36.66	
1-1/4	31.19	38.73	
1-1/2	34.22	41.82	
2	35.37	43.03	
2-1/2	39.37	47.16	
3	40.02	48.00	
3-1/2	63.40	94.72	
4	118.18	174.04	
5	151.61	215.66	
6	187.25	293.24	
8	208.25	339.83	
10	300.39	522.81	
12	349.62	538.92	
14	601.17	1,058.71	
16	718.82	1,124.05	
18	809.48	1,280.23	
20	1,045.63	1,673.02	
24	1,527.01	2,195.83	

FIG. 189H

heavy double bolt pipe clamp

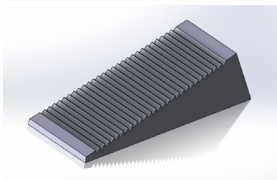


Materials/ Finishes:	Plain Carbon Steel (189HB)	Electro-Galvanized (189HG)
	Hot-Dip Galvanized (189HHDG)	T-304 Stainless Steel (189HSS)
	T-316 Stainless Steel (189HSX)	
Service:	Designed for suspension of high temperature pipe lines within the limitation of temperature and loads shown below.	
Approvals:	Complies with Federal Specifications WW-H-171-E (Type# 3), A-A-1192 A (Type# 3), and MSS SP-58 and SP-69 (Type# 3).	
Ordering:	Specify figure number, finish and pipe size.	
Notes:	Maximum temperature is 750°F and accommodates up to 4" thick insulation	

PIPE SIZE	ALL FINISHES
6	POA
8	
10	
12	
14	
16	
18	
20	
24	
30	
36	

FIG. 200

bathtub wedge

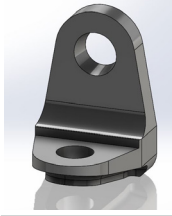


Materials/ Finishes	Plain Malleable Iron (200B)
Service:	Used for leveling and shimming tubs during and after installation.
Ordering:	Specify figure number.

PLAIN	STD. PKG.
12.58	BULK

FIG. 202

side beam bracket



Materials/ Finishes:	Plain Carbon Steel (202B)	Electro-Galvanized (202G)
Service:	Designed for attaching hanger rod to the side of steel or wooden beams.	
Approvals:	Complies with Federal Specifications WW-H-171-E (Type# 35), A-A-1192 A (Type# 35), and MSS SP-58 and SP-69 (Type# 35).	
Ordering:	Specify figure number, finish and rod size.	

ROD SIZE	PLAIN	E.G.	STD PKG
3/8	6.00	POA	100
1/2	10.56		50

FIG. 212

standard steel pipe clamp



Materials/ Finishes:	Plain Carbon Steel (212B)	Electro-Galvanized (212G)
	Hot-Dip Galvanized (212HDG)	T-304 Stainless Steel (212SS)
	T-316 Stainless Steel (212SX)	
Service:	Designed for the suspension of cold pipe lines or hot pipe lines where no insulation is required.	
Approvals:	Complies with Federal Specifications WW-H-171-E (Type# 4), A-A-1192 A (Type# 4), and MSS SP-58 and SP-69 (Type# 4).	
Ordering:	Specify figure number, finish and pipe size.	
Notes:	Normally used with Fig. 13 weldless eye nut, Fig 26 eyerod or Fig. 26W welded eyerod.	

PIPE SIZE	PLAIN	E.G.	H.D.G./SS/SX
1/2	11.00	14.67	POA
3/4	11.19	14.72	
1	11.37	14.91	
1-1/4	11.57	15.30	
1-1/2	12.20	16.49	
2	12.32	17.88	
2-1/2	12.89	19.09	
3	13.54	19.91	
3-1/2	15.05	23.13	
4	19.66	28.38	
5	27.11	37.23	
6	54.89	73.26	
8	66.18	91.46	
10	117.81	174.51	
12	134.00	190.76	
14	214.37	350.80	
16	243.62	389.39	
18	399.52	613.90	
20	555.43	750.32	
24	682.10	954.94	

FIG. 216

heavy duty two-bolt pipe clamp



Materials/ Finishes:	Plain Carbon Steel (216B)	Electro-Galvanized (216G)
	Hot-Dip Galvanized (216HDG)	T-304 Stainless Steel (216SS)
	T-316 Stainless Steel (216SX)	
Service:	Designed for the suspension of cold or hot pipe lines with heavy loads where no insulation is required.	
Approvals:	Complies with Federal Specifications WW-H-171-E (Type# 4), A-A-1192 A (Type# 4), and MSS SP-58 and SP-69 (Type# 4).	
Ordering:	Specify figure number, finish and pipe size.	

PIPE SIZE	ALL FINISHES
3	POA
4	
5	
6	
8	
10	
12	
14	
16	
18	
20	
24	

FIG. 218

malleable iron center load beam clamp



Materials/ Finishes:	Plain Malleable Iron (218B)	Electro-Galvanized (218G)
Service:	Designed for the suspension of a hanger rod from the center of an I-beam. The clamp accommodates flange widths of 2-3/8" - 7". Flange thickness not to exceed .60 inches. Normally used in conjunction with figure 157 extension piece. Figure 157 provides 1" of vertical adjustment.	
Approvals:	When used with FIG. 157 Extension Piece, complies with Federal Specification WW-H-171-E (Type# 30), A-A-1192 A (Type# 30) and Manufacturers' Standardization Society MSS SP-58 and SP-69 (Type# 30).	
Ordering:	Specify figure number and finish.	
Notes:	For complete assembly with extension piece see FIG. 229.	

FLANGE SIZE	PLAIN	E.G.	STD PKG
3 - 7	47.61	63.33	20

FIG. 231

two hole pipe strap

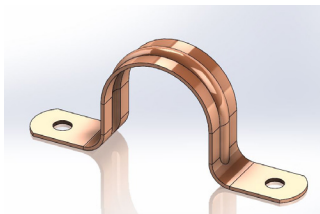


Materials/ Finishes:	Electro-Galvanized (231G)	T-304 Stainless Steel (231SS)
	T-316 Stainless Steel (231SX) POA	
Variants:	T-304 Stainless Steel for OD Sizes: Domestic (231ODSS)	
	T-316 Stainless Steel for OD Sizes: Domestic (231ODSX)	
Service:	Designed as a light duty support for schedule 40/80 sized pipe. Attaches directly to horizontal or vertical structural member.	
Approvals:	Complies with Manufacturers' Standardization Society MSS SP-58 & SP-69 (Type# 26).	
Ordering:	Specify figure number finish and pipe or OD size. BOX QUANTITY ONLY.	
Notes:	Stainless steel hangers are recommended for applications where protection from a corrosive environment is required.	

PIPE SIZE	E.G.	SS (IPS)	SS (OD)	STD. PKG.
1/4	0.43	8.00	8.00	100
3/8	0.43	8.07	8.07	100
1/2	0.50	8.18	8.18	100
3/4	0.64	8.30	8.30	100
1	0.99	8.48	8.48	100
1-1/4	1.21	10.71	POA	100
1-1/2	1.50	11.31		100
2	2.22	12.27		100
2-1/2	3.84	15.29		50
3	4.73	17.81		50
4	6.29	24.49		50
6	21.50	67.92		25

FIG. 231CT

two hole strap for copper tubing

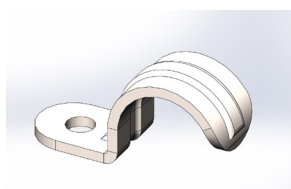


Materials/ Finishes:	Copper-Gard (231CT)
Service:	Designed as a light duty support for copper tubing. Attaches directly to horizontal or vertical structural member.
Approvals:	Complies with Manufacturers' Standardization Society MSS SP-58 & SP-69 (Type# 26)
Ordering:	Specify figure number and tube size. BOX QUANTITY ONLY.
Notes:	Available domestic

TUBE SIZE	COPPER GARD	STD. PKG.
1/4	0.43	100
3/8	0.43	100
1/2	0.50	100
3/4	0.57	100
1	0.71	100
1-1/4	0.85	100
1-1/2	1.79	100
2	2.22	100

FIG. 233

one hole pipe strap



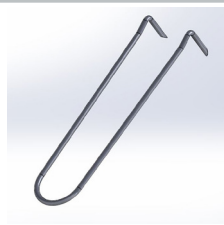
Materials/ Finishes:	Electro-Galvanized (233G)	T-304 Stainless Steel (233SS)
	T-316 Stainless Steel (233SX) POA	
Variants:	T-304 Stainless Steel for OD Sizes: (233ODSS) T-316 Stainless Steel for OD Sizes: (233ODSX)	
Service:	Designed as a light duty support for schedule 40/80 sized pipe. Attaches directly to horizontal structural member.	
Ordering:	Specify figure number finish and pipe or OD size	
Notes:	Stainless steel hangers are recommended for applications where protection from a corrosive environment is required.	



PIPE SIZE	E.G.	SS (IPS)	SS (OD)	STD. PKG.
1/4	0.95	6.38	6.38	100
3/8	1.20	6.38	6.38	100
1/2	1.40	6.56	6.56	100
3/4	2.03	6.79	6.79	100
1	3.73	7.89	7.89	100
1-1/4	4.67	11.97	11.97	100
1-1/2	6.13	12.82	12.82	100
2	8.21	14.44	14.44	100

FIG. 235/235CT

wire pipe hook

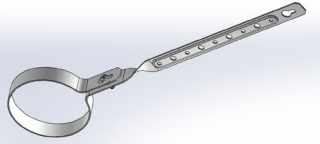


Materials/ Finishes:	Plain Carbon Steel (235B)	Plastic Coated (235PC)
	Plastic Coated for Copper Tubing (235CT)	
Service:	Designed to support steel pipe horizontally by driving nail points into wood members.	
Ordering:	Specify figure number, finish and pipe size. BOX QUANTITY ONLY.	

SIZE	PLAIN	STD. PKG.	P.C. (IPS)	P.C. (CTS)	STD. PKG.
1/2 x 4	0.84	50	--	0.96	--
1/2 x 6	0.96	50	2.11	1.14	50
1/2 x 8	1.14	50	--	1.39	--
1/2 x 10	2.11	50	--	2.59	--
1/2 x 12	2.34	50	--	2.95	--
3/4 x 4	0.84	50	--	0.96	--
3/4 x 6	0.96	50	2.16	1.14	50
3/4 x 8	1.14	50	--	1.39	--
3/4 x 10	2.11	50	--	2.59	--
3/4 x 12	2.34	50	--	2.95	--
1 x 4	0.84	50	--	0.96	--
1 x 6	0.96	50	--	1.14	50
1 x 8	1.14	50	--	1.39	--
1 x 10	2.11	50	--	2.59	--
1 x 12	2.34	50	--	2.95	--
1-1/4 x 6	1.57	50	--	1.14	50
1-1/4 x 8	1.87	50	--	1.39	--
1-1/4 x 10	2.11	50	--	2.59	--
1-1/4 x 12	2.34	50	--	2.95	--
1-1/2 x 6	1.57	50	--	1.80	--
1-1/2 x 8	1.87	50	--	1.98	--
1-1/2 x 10	2.11	50	--	2.59	--
1-1/2 x 12	2.31	50	--	2.95	--
2 x 6	1.57	50	--	1.80	--
2 x 8	1.87	50	--	1.98	--
2 x 10	2.11	50	--	2.59	--
2 x 12	2.16	50	--	2.95	--

FIG. 237

dwv (drain, waste, vent) hanger



Materials/ Finishes:	Pre-Galvanized (237G)	Plastic Coated (237PC)
Service:	Designed for the support of PVC or ABS DWV pipe from wood joists. Evenly spaced holes allow for proper pipe pitch.	
Ordering:	Specify figure number, finish and pipe size. BOX QUANTITY ONLY.	

PIPE SIZE	PRE-GALV	P.C.	STD. PKG.
1-1/2	3.08	6.34	25
2	3.42	6.78	25
3	3.73	7.35	25
4	5.15	8.51	25

FIG. 237CT

dwv (drain, waste, vent) hanger for copper tubing

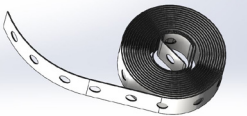


Materials/ Finishes:	Copper Plated Carbon Steel (237CT)
Service:	Designed for the support of PVC or ABS DWV pipe from wood joists. Evenly spaced holes allow for proper pipe pitch.
Ordering:	Specify figure number, finish and pipe size. BOX QUANTITY ONLY.
Notes:	FIG. 237CT copper plated DWV hangers are NOT designed for copper DWV pipe.

PIPE SIZE	PLATED	STD. PKG.
1-1/2	5.94	25
2	6.32	25
3	6.64	25
4	7.64	25

FIG. 239

perforated hanger strapping

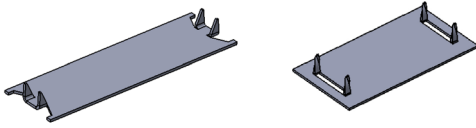


Materials/ Finishes:	Plain Carbon Steel (239B)	Electro-Galvanized (239G)
	Copper Plated (239CT)	T-304 Stainless Steel (239SS)
Variants:	Electro-Galvanized w/ Alternating Hole (239AHG)	
Service:	Designed for various light duty applications.	
Ordering:	Specify figure number, finish, gauge and length	
Notes:	Stainless steel hangers are recommended for applications where protection from a corrosive environment is required.	

SIZE	PLAIN	E.G.	COPPER PLATED	SS	E.G. W/ ALT HOLE
3/4 x 24ga x 10'	4.75	4.99	11.25	--	--
3/4 x 22ga x 10'	--	--	--	53.78	5.84
3/4 x 24ga x 10'	6.02	6.25	--	--	--
3/4 x 24ga x 50'	26.17		60.05	--	--
3/4 x 24ga x 50'	--	POA	--	268.81	33.15
3/4 x 20ga x 50'	31.82	35.08	--	--	--
3/4 x 24ga x 100'	51.86	52.59	117.09	--	--
3/4 x 22ga x 100'	--	--	--	--	63.59
3/4 x 20ga x 100'	63.47	67.32	--	--	--

FIG. 240 / 245

stud guard, triangle point / twist point

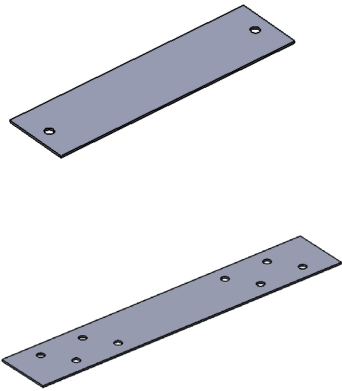


Materials/ Finishes:	Electro-Galvanized Carbon Steel: Triangle Point (240G)
Variants:	Electro-Galvanized Carbon Steel: Twist Point (245G)
Service:	Designed to protect piping and electrical lines that pass through wood framing from damage due to penetration from drywall or other fasteners. Simple installation with a hammer..
Ordering:	Specify size & figure number. BOX QUANTITY ONLY.

SIZE	240G	245G	STD. PKG.
16ga x 3 x 1-1/2	0.60	--	100
16ga x 5 x 1-1/2	0.96	--	100
16ga x 6 x 1-1/2	1.14	--	100
18ga x 3 x 1-1/2	0.54	--	100
18ga x 5 x 1-1/2	0.78	--	100
18ga x 6 x 1-1/2	0.96	--	100
19ga x 3 x 1-1/2	--	0.54	100
19ga x 6 x 1-1/2	--	0.84	100

FIG. 241 / 243

nail plates non-fha / fha

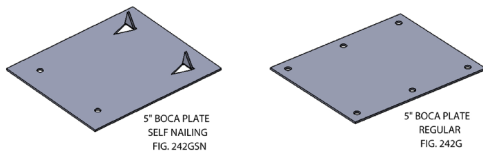


Materials/ Finishes:	(NON-FHA) Electro-Galvanized Carbon Steel (241G)
Variants:	(FHA) Electro-Galvanized Carbon Steel (243G)
Service:	Designed to protect piping and electrical lines that pass through wood framing from damage due to penetration from drywall or other fasteners. Attach with metal framing screws.
Ordering:	Specify figure number, gauge and size. BOX QUANTITY ONLY.

SIZE	241G	243G	STD. PKG.
18ga x 1-1/2 x 3	0.54	--	250
18ga x 1-1/2 x 6	0.96	--	100
18ga x 1-1/2 x 9	--	3.55	50
18ga x 1-1/2 x 12	--	5.11	50
18ga x 1-1/2 x 18	--	7.22	50
18ga x 1-1/2 x 24	--	9.44	50
18ga x 3 x 6	--	1.87	50
18ga x 3 x 9	--	2.95	50
18ga x 3 x 12	--	4.03	50
18ga x 3 x 18	--	5.96	50
16ga x 1-1/2 x 9	--	1.93	50
16ga x 1-1/2 x 12	--	2.59	50
16ga x 1-1/2 x 18	--	3.91	50
16ga x 1-1/2 x 24	--	5.60	50
16ga x 3-1/2 x 6	--	2.34	50
16ga x 5 x 18	--	11.73	25
13ga x 1-1/2 x 9	--	3.55	50
13ga x 1-1/2 x 12	--	5.11	25
13ga x 1-1/2 x 18	--	7.22	25
13ga x 1-1/2 x 24	--	9.44	25

FIG. 242G / 242GSN

boca safety plate, regular / self nailing

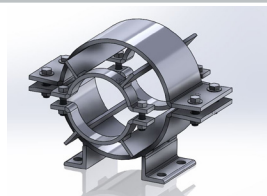


Materials/ Finishes:	Electro-Galvanized Carbon Steel: Regular (242G)
Variants:	Electro-Galvanized Carbon Steel: Self Nailing (242GSN)
Service:	Designed to protect piping and electrical lines that pass through wood framing from damage due to penetration from drywall or other fasteners. Attach with metal framing screws.
Ordering:	Specify size & figure number. BOX QUANTITY ONLY.

SIZE	242G	242GSN	STD. PKG.
16ga x 5 x 8	4.16	--	50
16ga x 5 x 8	--	4.52	25
16ga x 5 x 4	--	2.52	25

FIG. 255

pipe alignment guide (single spider clamp)

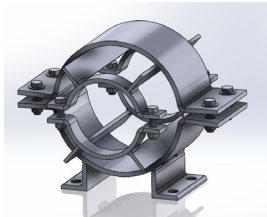


Materials/ Finishes:	Plain Carbon Steel (255B)	Hot-Dip Galvanized (255HDG)
	T-304 Stainless Steel (255SS)	T-316 Stainless Steel (255SX)
Service:	Designed for use with insulated or non-insulated pipe lines to maintain alignment of piping through axial expansion and contraction cycles. Proper alignment of the adjoining pipe is of vital importance in the proper functioning of expansion joints in the line. Pipe guides are not designed to support any piping system weight. Therefore additional supports are required. The use of two or more guides on both sides of the expansion joint is recommended to avoid a pivoting effect in the line. Maximum temperature: 650°F.	
Ordering:	Specify figure number, finish, size number and insulation thickness.	

SIZE	PLAIN	H.D.G/ SS/SX
2	336.60	POA
3	392.68	
4	527.32	
5	628.34	
6	807.79	
7	1,077.09	
8	1,222.98	
9	1,489.62	
10	POA	
11	POA	
12	POA	
13	POA	
14	POA	

FIG. 256

pipe alignment guide

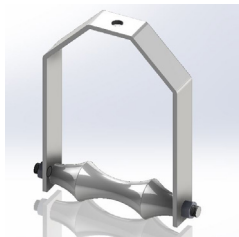


Materials/ Finishes:	Plain Carbon Steel (256B)	Electro-Galvanized (256G)
	Hot-Dip Galvanized (256HDG)	T-304 Stainless Steel (256SS)
	T-316 Stainless Steel (256SX)	
Service:	Designed for use with insulated or non-insulated pipe lines to maintain alignment of piping through axial expansion and contraction cycles. Proper alignment of the adjoining pipe is of vital importance in the proper functioning of expansion joints in the line. Pipe guides are not designed to support any piping system weight, therefore additional supports are required. The use of two or more guides on both sides of the expansion joint is recommended to avoid a pivoting effect in the line. Maximum temperature is 750°F.	
Ordering:	Specify figure number, finish, size number and insulation thickness.	

SIZE	PLAIN	H.D.G/ SS/SX
2	440.57	POA
3	452.17	
4	614.44	
5	788.36	
6	1,136.16	
7	1,205.77	
8	1,449.19	
9	1,773.83	
10	2,075.29	
11	2,666.57	
12	2,956.42	
13	3,292.61	
14	4,312.91	

FIG. 272

adjustable roller hanger

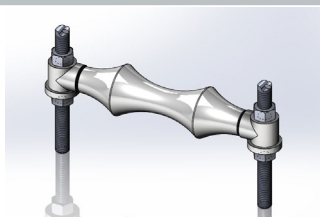


Materials/ Finishes:	Plain Carbon Steel (272B)	Electro-Galvanized (272G)
	Hot-Dip Galvanized (272HDG)	T-304 Stainless Steel (272SS)*
	T-316 Stainless Steel (272SX)*	
Variants:	T-304 Stainless Steel with Short Roll (272SRSS) POA	
	T-316 Stainless Steel with Short Roll (272SRSX) POA	
	With Non-Conductive Roll (272NCR) POA	
	T-304 Stainless Steel with Non-Conductive Roll (272SSNCR) POA	
	T-316 Stainless Steel with Non-Conductive Roll (272SXNCR) POA	
Service:	Designed for the suspension of pipe where longitudinal movement of pipe may occur due to expansion and contraction, and where vertical adjustment may be necessary.	
Approvals:	Complies with Federal Specification WW-H-171-E (Type# 44), A-A-1192 A (Type# 43) and Manufacturers' Standardization Society MSS SP-58 and SP-69 (Type# 43).	
Ordering:	Specify figure number, roller type, finish and roller size. Please remember to consider insulation thickness when sizing rollers	
Notes:	272G Roller is Hot-Dip Galvanized. Hardware is Electro-Galvanized. * Available in 3-1/2, 5, 7 or 24 with short pattern roll only	

PIPE SIZE	PLAIN	E.G.	SS	SX	H.D.G.
2	34.94	41.13	--	--	POA
2-1/2	40.53	45.59	--	--	
3	38.30	48.23	--	--	
3-1/2	68.19	84.29	--	--	
4	46.77	67.20	POA	POA	
5	65.96	84.03			
6	73.58	106.24			
7	103.86	155.05			
8	131.73	178.10			
10	154.13	227.64			
12	252.21	345.30			
14	447.66	561.98			
16	480.83	670.91			
18	693.04	1,002.94			
20	1,108.96	1,277.08			
24	POA	POA	--	--	

FIG. 273

adjustable two-rod roller support

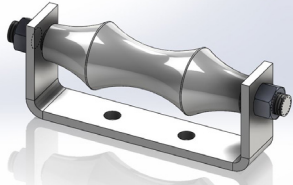


Materials/ Finishes:	Plain Carbon Steel (273B)	Electro-Galvanized (273G)
	T-304 Stainless (273SS)	T-316 Stainless (273SX)
Variants:	T-304 Stainless Steel with Short Roll (273SSSR) POA	
	T-316 Stainless Steel with Short Roll (273SXSX) POA	
	With Non-Conductive Roll (273NCR) POA	
	T-304 Stainless Steel with Non-Conductive Roll (273SSNCR) POA	
	T-316 Stainless Steel with Non-Conductive Roll (273SXNCR) POA	
Service:	Designed for the support of pipe where longitudinal movement may occur due to expansion and contraction and vertical adjustment of up to 6 inches may be necessary.	
Ordering:	Specify figure number, finish and roller size. Please remember to consider insulation thickness when sizing rollers	

PIPE SIZE	PLAIN	E.G./SS/SX
2	62.18	POA
2-1/2	69.20	
3	72.20	
3-1/2	76.42	
4	85.75	
5	100.62	
6	116.49	
7	169.82	
8	178.73	
10	213.83	
12	251.08	
14	399.35	
16	485.82	
18	528.40	
20	764.11	
24	1,211.26	
30	2,222.53	

FIG. 275

roller chair

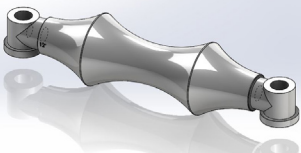


Materials/ Finishes:	Plain Carbon Steel (275B)	Electro-Galvanized (275G)
	Hot-Dip Galvanized (275HDG)	T-304 Stainless Steel (275SS)*
	T-316 Stainless Steel (275SX)*	
Variants:	T-304 Stainless Steel with Short Roll (275SRSS) POA	
	T-316 Stainless Steel with Short Roll (275SRSX) POA	
	With Nonconductive Roll (275NCR) POA	
	T-304 Stainless Steel with Non-Conductive Roll (275SSNCR) POA	
	T-316 Stainless Steel with Non-Conductive Roll (275SXNCR) POA	
Service:	Designed for the support of pipe where longitudinal movement may occur due to expansion and contraction, and vertical adjustment is not necessary. May be bolted or welded to supporting member.	
Approvals:	Complies with Federal Specification WW-H-171-E (Type# 42), A-A-1192 A (Type# 41) and Manufacturers' Standardization Society MSS SP-58 and SP-69 (Type# 41).	
Ordering:	Specify figure number, finish and roller size. Please remember to consider insulation thickness when sizing rollers	
Notes:	Mounting hardware not included. *Available in 3-1/2, 5, 7 or 24 with short pattern roll only	

PIPE SIZE	PLAIN	E.G.	H.D.G./SS/SX
2	34.49	40.47	POA
2-1/2	35.28	47.63	
3	40.14	48.62	
3-1/2	62.43	82.57	
4	77.37	89.88	
5	86.29	98.63	
6	87.54	114.24	
7	116.75	166.02	
8	116.75	162.27	
10	189.90	232.17	
12	233.81	298.52	
14	338.40	546.92	
16	467.30	605.54	
18	528.74	644.16	
20	733.78	877.52	
24	1,295.93	1,549.63	

FIG. 277

adjuststable two rod roller hanger

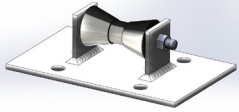


Materials/ Finishes:	Plain Carbon Steel (277B)	Electro-Galvanized (277G)
	T-304 Stainless Steel (277SS)	T-316 Stainless Steel (277SX)
Variants:	T-304 Stainless Steel with Short Roll (277SSSR) POA	
	T-316 Stainless Steel with Short Roll (277SXSR) POA	
	With Non Conductive Roll (277NCR) POA	
	T-304 Stainless Steel with Non-Conductive Roll (277SSNCR) POA	
	T-316 Stainless Steel with Non-Conductive Roll (277SXNCR) POA	
Service:	Designed for the suspension of pipe where longitudinal movement may occur due to expansion and contraction, and vertical adjustment is necessary.	
Approvals:	Complies with Federal Specification WW-H-171-E (Type# 42), A-A-1192 A (Type# 41) and Manufacturers' Standardization Society MSS SP-58 and SP-69 (Type# 41).	
Ordering:	Specify figure number, finish and roller size. Please remember to consider insulation thickness when sizing rollers. 277G Roller is Hot-Dip Galvanized. Hardware is Electro-Galvanized.	

PIPE SIZE	PLAIN	E.G.	SS	SX
2	33.88	41.46	--	--
2-1/2	40.41	51.44	--	--
3	40.50	56.07	--	--
3-1/2	60.49	59.72	--	--
4	48.63	70.52	POA	POA
5	52.63	75.92		
6	64.91	94.32		
7	92.20	117.75		
8	102.03	144.14		
10	104.84	172.13		
12	173.25	236.77		
14	239.08	368.19		
16	320.70	479.08		
18	366.43	573.39		
20	516.47	783.63		
24	815.69	1,284.17		
30	1,512.44	2,174.53	--	--

FIG. 279S

pipe roll stand

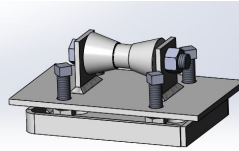


Materials/ Finishes:	Plain Carbon Steel (279SB)	Hot-Dip Galvanized (279SHDG)
	T-304 Stainless Steel (279SSS)	T-316 Stainless Steel (279SSX)
Variants:	With Non Conductive Roll (279SNCR) POA	
Service:	Designed for the support of pipe where longitudinal movement may occur due to expansion and contraction and vertical adjustment of up to 6 inches may be necessary.	
Ordering:	Specify figure number, finish and roller size. Please remember to consider insulation thickness when sizing rollers	
Notes:	Available Domestic. Stainless steel pipe roll hangers are recommended for applications where protection from a corrosive environment is required.	

PIPE SIZE	PLAIN	H.D.G./ SS/SX
2 - 3-1/2	146.43	POA
4 - 6	200.58	
8 - 10	330.39	
12 - 14	487.74	
16 - 20	663.29	
22 - 24	294.45	
30	POA	POA
36 - 42		

FIG. 280S

adjustable pipe roll stand



Materials/ Finishes:	Plain Carbon Steel (280SB)	Hot-Dip Galvanized (280SHDG)
	T-304 Stainless Steel (280SSS)	T-316 Stainless Steel (280SSX)
Variants:	With Non Conductive Roll (280SNCR) POA	
Service:	Designed for the support of pipe where longitudinal movement may occur due to expansion and contraction, and where vertical adjustment is necessary.	
Approvals:	Complies with Federal Specification WW-H-171-E (Type# 47), A-A-1192 A (Type# 46) and Manufacturers' Standardization Society MSS SP-58 and SP-69 (Type# 46).	
Ordering:	Specify figure number, finish and roller size. Please remember to consider insulation thickness when sizing rollers	
Notes:	Available Domestic. Stainless steel pipe roll hangers are recommended for applications where protection from a corrosive environment is required.	

PIPE SIZE	PLAIN	H.D.G./ SS/SX
2 - 3-1/2	146.43	POA
4 - 6	200.58	
8 - 10	330.39	
12 - 14	487.74	
16 - 20	663.29	
22 - 24	894.45	
30	POA	POA
36 - 42		

FIG. 310

"emlok" adjustable adjustable swivel ring hanger



Materials/ Finishes:	Pre-Galvanized (310G)	Plastic Coated (310PC)
	Pre -Galvanized, 3/16" Felt-lined: 1/2" - 2" (310GFL)	
Service:	Designed for the suspension of insulated and non-insulated pipe lines. The plastic coated band hanger protects the pipe from the steel surface of the hanger and is designed to reduce noise, vibration and prevents electrolysis between pipe and the hanger.	
Approvals:	Complies with Federal Specification WW-H-171-E (Type# 10), A-A-1192 A (Type# 10) and Manufacturers' Standardization Society MSS SP-58 and SP-69 (Type# 10). UL approved on sizes 3/4" - 2". FM approved on sizes 3/4" - 2".	
Ordering:	Specify figure number, finish and pipe size.	

PIPE SIZE	ROD SIZE	PRE-GALV	PRE-GALV FELT LINED	P.C.	STD. PKG.
1/2	3/8	1.43	4.06	11.34	100
3/4	3/8	1.43	4.06	11.48	100
1	3/8	1.43	4.27	11.66	100
1-1/4	3/8	1.49	4.27	12.12	100
1-1/2	3/8	1.54	4.95	12.94	100
2	3/8	1.73	5.02	14.18	100
2-1/2	1/2	8.70	--	17.58	50
3	1/2	9.61	--	20.56	50
3-1/2	1/2	14.50	--	33.12	50
4	5/8	16.63	--	39.31	25
5	5/8	19.27	--	49.03	25
6	3/4	45.23	--	41.62	20
8	3/4	54.13	--	76.48	10

FIG. 310NFPA

“emlok” adjustable swivel ring hanger, NFPA



Materials/ Finishes:	Pre-Galvanized (310NFG)	Plastic Coated 1/2" - 8" (310NFPC)
Variants:	Pre-Galvanized, 3/16" Felt-lined: 1/2" - 8" (310NFFL)	
Service:	Designed for the suspension of non-insulated stationary pipe lines. Typically used as a pipe support for sprinkler piping. Hanger is manufactured to use minimum rod sizes permitted by NFPA. The plastic coated band hanger protects the pipe from the steel surface of the hanger and is designed to reduce noise, vibration and prevents electrolysis between pipe and the hanger.	
Approvals:	U.L. - U.L.C. listed and FM approved (2-1/2"-8"). Complies with Federal Specification WW-H-171-E (Type# 10), A-A-1192 A (Type# 10) and Manufacturers' Standardization Society MSS SP-58 and SP-69 (Type# 10).	
Ordering:	Specify figure number, finish and pipe size.	

PIPE SIZE	ROD SIZE	PRE-GALV	PRE-GALV FELT LINED	P.C.	STD. PKG.
1/2	3/8	1.43	4.06	11.34	100
3/4	3/8	1.43	4.06	11.48	100
1	3/8	1.43	4.27	11.66	100
1-1/4	3/8	1.49	4.27	12.12	100
1-1/2	3/8	1.54	4.95	12.94	100
2	3/8	1.73	5.02	14.18	100
2-1/2	3/8	3.61	8.05	15.60	50
3	3/8	3.73	8.42	18.12	50
3-1/2	3/8	4.76	11.00	29.18	50
4	3/8	4.31	--	34.61	25
5	1/2	8.64	--	43.30	25
6	1/2	9.03	--	66.37	20
8	1/2	13.92	--	98.13	10
10	1/2	74.60	--	--	10

FIG. 310CT

“emlok” adjustable swivel ring hanger for copper tubing



Materials/ Finishes:	Copper Epoxy Coated <i>Copper Gard</i> : Imported (310CTI)	
Variants:	Copper Plated (310CT)	
Service:	Designed for the suspension of non-insulated, stationary copper lines.	
Approvals:	Complies with Federal Specification WW-H-171-E (Type# 10), A-A-1192 A (Type# 10) and Manufacturers' Standardization Society MSS SP-58 and SP-69 (Type# 10).	
Ordering:	Specify figure number, finish and tube size.	

TUBE SIZE	ROD SIZE	COPPER PLATED	EPOXY COATED	STD. PKG.
1/2	3/8	2.70	2.65	100
3/4	3/8	2.77	2.72	100
1	3/8	2.77	2.78	100
1-1/4	3/8	2.84	2.99	100
1-1/2	3/8	2.90	3.08	100
2	3/8	3.27	3.15	100
2-1/2	1/2	7.86	7.64	50
3	1/2	9.03	9.01	50
3-1/2	1/2	16.56	11.43	50
4	1/2	11.85	12.37	25
5	1/2	21.58	26.87	25
6	1/2	25.52	27.58	25

FIG. 310SS/SX

“emlok” adjustable swivel hanger, stainless steel



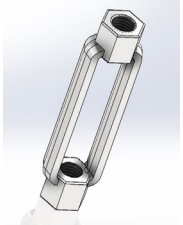
Materials/ Finishes:	T-304 Stainless Steel, IPS 1/2" - 6" (310SS)	T-316 Stainless Steel, IPS 1/2 - 6" (310SX)
Variants:	T-304 Stainless Steel, OD 1/2" - 4" (310ODSS)	T-316 Stainless Steel, OD 1/2 - 4" (310ODSX)
Service:	Designed for the suspension of insulated and non-insulated pipe lines.	
Ordering:	Specify figure number, size type, finish and pipe size.	

PIPE SIZE	ROD SIZE	SS (OD)	SX (OD)	SS (IPS)	SX (IPS)	STD. PKG.
1/2	3/8	18.80	23.39	17.15	22.30	100
3/4	3/8	19.26	24.65	18.06	23.48	100
1	3/8	21.67	26.88	19.68	25.61	100
1-1/4	3/8	22.13	28.66	20.89	27.27	100
1-1/2	3/8	23.50	29.92	21.92	28.50	100
2	3/8	24.81	31.35	22.96	29.84	100
2-1/2	3/8	36.11	44.15	36.54	47.50	100
3	3/8	42.42	51.87	37.41	48.62	50
4	3/8	42.42	51.87	42.56	55.32	50
5	3/8	--	--	102.71	155.34	50
6	3/8	--	--	118.66	161.64	50

* FOR 3-1/2" IPS PLEASE ORDER 310ODSS/SX0400 (4" OD SIZE)

FIG. 320I / 320

turnbuckle



Materials/ Finishes:	Plain Carbon Steel: Imported (320BI) Hot-Dip Galvanized: Imported (320HDGI)
Variants:	Plain Carbon Steel (320B) POA Hot-Dip Galvanized (320HDG) POA T-316 Stainless Steel (320SX) POA
Service:	To provide up to 6 inches of adjustment. Normally tapped for UNC-2A thread (standard).
Approvals:	Complies with Federal Specification WW-H-171-E (Type# 13), A-A-1192 A (Type# 13) and Manufacturers' Standardization Society MSS SP-58 and SP-69 (Type# 13).
Ordering:	Specify figure number, finish and size
Notes:	When figure 320I is supplied hot-dip galvanized, it is not tapped over-size. PRICES ARE FOR IMPORTED. ALL DOMESTIC POA.

ROD SIZE	PLAIN	H.D.G.
3/8	23.30	41.68
1/2	33.87	52.67
5/8	45.81	72.39
3/4	57.03	79.34
7/8	88.13	125.29
1	103.27	150.95
1-1/8	192.33	321.19
1-1/4	192.41	321.34
1-1/2	320.41	778.41

FIG. 420

pipe saddle support

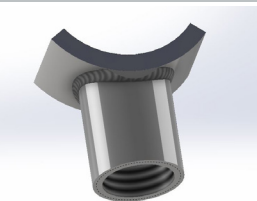


Materials/ Finishes:	Plain Carbon Steel (420B)
Service:	Designed to be used in conjunction with a base stand to support pipe running close to the floor.
Approvals:	Complies with Federal Specification WW-H-171-E (Type# 37), A-A-1192 A and Manufacturers' Standardization Society MSS SP-58 and SP-69 (Type# 36).
Ordering:	Specify figure number, finish and pipe size
Notes:	Base stand can be ordered separately (requires accurate center line of pipe to floor dimension). Larger sizes available - POA

PIPE SIZE	PLAIN
2	123.76
3	151.43
4	169.54
5	186.08
6	193.37
8	206.84
10	231.86
12	252.98

FIG. 421

adjustable pipe saddle support with threaded coupling



Materials/ Finishes:	Plain Carbon Steel (421B)
Service:	Designed to be used in conjunction with a base stand to support pipe running close to the floor.
Ordering:	Specify figure number, finish and pipe size
Notes:	Base stand can be ordered separately (requires accurate center line of pipe to floor dimension)

PIPE SIZE	PLAIN
2	159.61
3	192.45
4	208.10
5	252.68
6	298.04
8	364.28
10	474.25
12	477.57

FIG. 422

adjustable pipe support

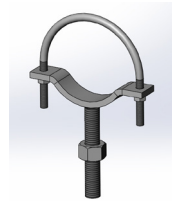


PIPE SIZE	PLAIN
2	125.20
3	142.10
4	159.61
5	175.43
6	213.99
8	244.20
10	291.72
12	314.16

Materials/ Finishes:	Plain Carbon Steel (422B)	Electro-Galvanized (422G) POA
Service:	Designed to be used in conjunction with a base stand to support pipe running close to the floor. Threaded stud and nut provide adjustability.	
Ordering:	Specify figure number, finish and pipe size	
Notes:	Base stand can be ordered separately (requires accurate center line of pipe to floor dimension).	

FIG. 422U

adjustable pipe support w/ u-bolt

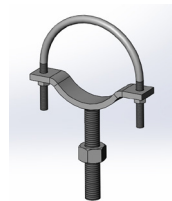


PIPE SIZE	PLAIN	E.G.	HDG	SS	SX
3	POA	POA	POA	POA	POA
3-1/2					
4					
5					
6					
8					
10					
12					

Materials/ Finishes:	Plain Carbon Steel (422UB)	Electro-Galvanized (422UG)
	Hot-Dip Galvanized (422UHDG)	T-304 Stainless Steel (422SS)
	T-316 Stainless Steel (422USX)	
Service:	Designed to be used in conjunction with a standard pipe and flange at the base to support piping where an overhead supporting member is not available. The stem is threaded the full length with a nut to allow vertical adjustment to accommodate the pitch in the pipe line.	
Ordering:	Specify figure number, finish and pipe size	

FIG. 422UDIP

adjustable pipe support w/ u-bolt for ductile iron pipe



DIP SIZE	PLAIN	E.G.	HDG	SS	SX
3	POA	POA	POA	POA	POA
4					
6					
8					
10					
12					

Materials/ Finishes:	Plain Carbon Steel (422UDIPB)	Electro-Galvanized (422UDIPG)
	Hot-Dip Galvanized (422UDIPHDG)	T-304 Stainless Steel (422UDIPSS)
	T-316 Stainless Steel (422UDIPSX)	
Service:	Designed to be used in conjunction with a standard pipe and flange at the base to support piping where an overhead supporting member is not available. The stem is threaded the full length with a nut to allow vertical adjustment to accommodate the pitch in the pipe line.	
Ordering:	Specify figure number, finish and pipe size	

FIG. 425

adjustable pipe support



Materials/ Finishes:	Plain Carbon Steel (425B)	Hot-Dip Galvanized (425HDG)
	T-304 Stainless Steel (425SS)	T-316 Stainless Steel (425SX)
Service:	Designed to be used in conjunction with a base stand to support pipe running close to the floor. U-bolt secures pipe to saddle.	
Approvals:	Complies with Federal Specification WW-H-171-E (Type# 37), A-A-1192 A (Type# 36) and Manufacturers' Standardization Society MSS SP-58 and SP-69 (Type# 36).	
Ordering:	Specify figure number, finish and size	
Notes:	Specify size, figure number and finish. Base stand ordered separately. Requires accurate center line of pipe to floor dimension ("L").	

PIPE SIZE	PLAIN	H.D.G./SS/SX
2-1/2	213.70	POA
3	215.38	
3-1/2	250.46	
4	259.54	
5	290.71	
6	342.62	
8	446.41	
10	560.66	
12	643.67	
14	1,017.53	
16	1,162.69	
18	1,350.89	
20	2,027.28	
24	2,434.70	

FIG. 426

adjustable pipe saddle support

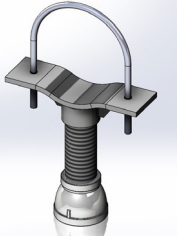


Materials/ Finishes:	Plain Carbon Steel (426B)	Hot-Dip Galvanized (426HDG)
	T-304 Stainless Steel (426SS)	T-316 Stainless Steel (426SX)
Service:	Designed to be used in conjunction with a base stand to support horizontal pipe. Straight cut pipe thread on nipple provides adjustability.	
Approvals:	Complies with Federal Specification WW-H-171-E (Type# 39), A-A-1192 A (Type# 38) and Manufacturers' Standardization Society MSS SP 58 and SP 69 (Type#38).	
Ordering:	Specify figure number, finish and size	
Notes:	Base stand ordered separately. Requires accurate center line of pipe to floor dimension ("L").	

PIPE SIZE	PLAIN	H.D.G./SS/SX
2-1/2	460.13	POA
3	461.85	
4	552.97	
5	601.26	
6	613.67	
8	682.98	
10	785.26	
12	810.83	
14	1,056.22	
16	1,225.12	
18	1,667.33	
20	2,109.93	

FIG. 427

adjustable pipe saddle support with u-bolt



PIPE SIZE	PLAIN	H.D.G.
2-1/2	520.58	POA
3	549.36	
3-1/2	738.96	
4	755.51	
5	779.10	
6	813.14	
8	945.58	
10	1,012.46	
12	1,144.91	
14	1,518.07	
16	1,731.98	
18	2,577.89	
20	2,870.77	
24	3,592.71	
30	4,165.19	
36	5,539.77	

Materials/ Finishes:	Plain Carbon Steel (427B)	Hot-Dip Galvanized (427HDG)
Service:	Designed to be used in conjunction with a base stand to support horizontal pipe. Straight cut pipe thread on nipple provides adjustability, u-bolt secures pipe to saddle.	
Ordering:	Specify figure number, finish and size	
Notes:	Base stand ordered separately. Requires accurate center line of pipe to floor dimension ("L").	

FIG. 428KT

adjustable pipe support, kit

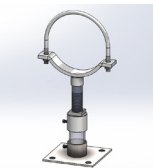


PIPE SIZE	H.D.G./SX
2	POA
3	
4	
6	
8	
10	
12	
14	
16	

Materials/ Finishes:	Hot-Dip Galvanized (428KTHDG) T-316 Stainless Steel: (428KTSX)
Service:	Designed to support pipe horizontally. Straight cut pipe thread on nipple provides up to 4-1/2 inches of vertical adjustability.
Approvals:	Complies with Manufacturers' Standardization Society MSS SP-58 (Type# 38)
Ordering:	Specify figure number, finish and pipe size.
Notes:	Saddles accommodate ductile iron pipe and IPS. Support requires 2" schedule 40 (3" schedule 40 for sizes 14" and 16") extension pipe (not supplied) to be cut in the field.

FIG. 429KTU

adjustable pipe saddle support with u-bolt, kit

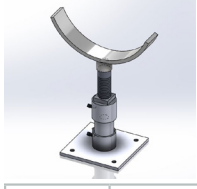


PIPE SIZE	H.D.G./SX
2	POA
3	
4	
6	
8	
10	
12	
14	
16	

Materials/ Finishes:	Hot-Dip Galvanized (429KTHDG) T-316 Stainless Steel: (429KTSX)
Service:	Designed to support pipe horizontally. Straight cut pipe thread on nipple provides up to 4-1/2 inches of vertical adjustability.
Approvals:	Complies with Manufacturers' Standardization Society MSS SP-58 (Type# 38)
Ordering:	Specify figure number, finish and pipe size.
Notes:	Saddles accommodate ductile iron pipe and IPS. Support requires 2" schedule 40 (3" schedule 40 for sizes 14" and 16") extension pipe (not supplied) to be cut in the field.

FIG. 430KTSF

adjustable flange support, kit

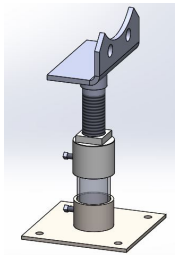


Materials/ Finishes:	Hot-Dip Galvanized (430KTSFHDG)
Service:	Designed to support Class 125 pipe flange horizontally. Straight cut pipe thread on nipple provides up to 4-1/2 inches of vertical adjustability.
Approvals:	Complies with Manufacturers' Standardization Society MSS SP-58 (Type# 38)
Ordering:	Specify figure number, finish and pipe size.
Notes:	Support requires 2" schedule 40 extension pipe (not supplied) to be cut in the field.

PIPE SIZE	H.D.G.	SX
3	POA	--
4		POA
6		
8		--
10		--
12		--

FIG. 431KTSF

adjustable bolt on flange support, kit



Materials/ Finishes:	Hot-Dip Galvanized (431KTHDG)
Service:	Designed to support pipe flange horizontally. Straight cut pipe thread on nipple provides up to 4-1/2 inches of vertical adjustability.
Ordering:	Specify figure number, finish and pipe size.
Notes:	Support requires 2" schedule 40 extension pipe (not supplied) to be cut in the field.

PIPE SIZE	H.D.G.
4	POA
6	
8	

FIG. 450

heavy beam clamp assembly



Materials/Finishes:	Plain Carbon Steel (450B)	Hot-Dip Galvanized (450HDG)
	T-304 Stainless Steel (450SS)	T-316 Stainless Steel (450SX)
Variants:	With Weldless Eye Nut (450W)	
Service:	Designed to be used for the suspension of heavy loads from beams up to 16 inches wide and up to 1 inch thick. Normally used with figure 26, 26W eyerods or figure 13, 13I weldless eye nuts.	
Approvals:	Complies with Federal Specification WW-H-171-E (Type# 28 without links, Type #29 with links), A-A-1192 A (Type# 28 without links, Type #29 with links) and Manufacturers' Standardization Society MSS SP-58 and SP-69 (Type# 28 without links, Type #29 with links).	
Ordering:	Specify figure number, finish clamp size and rod size	
Notes:	ASTM A-36 carbon steel with ASTM A-235 class C eye-nut.	

SIZE	PLAIN	PLAIN W/EYE NUT	H.D.G./ SS/SX
1	489.60	544.23	POA
2	653.00	720.14	
3	675.14	767.19	
4	847.39	1,016.62	
5	1,012.23	1,221.60	
6	1,311.47	1,504.78	

FIG. 575

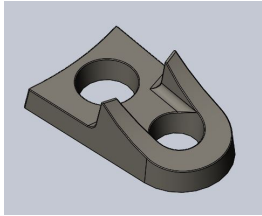
corporation eye bolt



Materials/ Finishes:	Plain Carbon Steel (575B) POA	Electro-Galvanized (575G) POA
Service:	Designed to be used with figure number 600 socket clamp.	
Ordering:	Specify figure number and finish	

FIG. 585

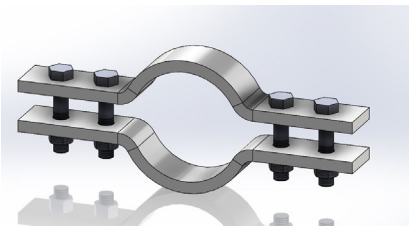
ductile lug



Materials/ Finishes	Plain Ductile Iron: (585B) POA
Service:	Designed to assist in restraining of mechanical joint fittings, valves, hydrants and pipes by threaded rods. Installed between MJ Bell and MJ Gland.
Ordering:	Specify figure number
Notes:	For use on sizes 4" - 16"

FIG. 595

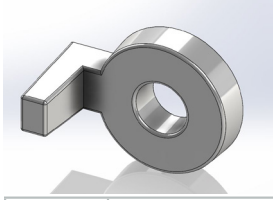
four bolt socket clamp



Materials/ Finishes:	Plain Carbon Steel (595B) POA	Electro-Galvanized (595G) POA
	Hot-Dip Galvanized (595HDG) POA	
Service:	Designed to used to clamp mechanical joint or socket joint piping and fittings together to prevent separation or distortion of pipe lines under excessive water pressure.	
Approvals:	Complies with the requirements of the National Fire Protection Association standard NFPA 24 for outside protection.	
Ordering:	Specify figure number, finish and size.	

FIG. 599

socket clamp washer



Materials/ Finishes:	Plain Carbon Steel (599B)	Electro-Galvanized (599G)
	Hot-Dip Galvanized (599HDG)	
Service:	Designed to be used with figure 600 socket clamp, washer lugs hook around clamp bolts to secure tie rods within clamp legs.	
Ordering:	Specify figure number, finish and size.	
Notes:	The 3/4" rod size socket clamp washer is a cast iron product with tab feature. This accommodates pipe sizes 4"-12". The 1"-11/2" rod size washer are a carbon steel flat style. These accommodate pipe sizes 14"-24".	

PIPE SIZE	ROD SIZE	PLAIN	E.G./ H.D.G
4-12	3/4	10.79	POA
14	1		
16	1-1/8		
18	1-1/4		
20	1-3/8		
24	1-1/2		

FIG. 600DIP

socket clamp



Materials/ Finishes:	Plain Carbon Steel (600DIPB)	Electro-Galvanized (600DIPG)
	Hot-Dip Galvanized (600DIPHGDG)	T-304 Stainless Steel (600DIPSS)
	T-316 Stainless Steel (600DIPSX)	
Service:	Designed to be used to clamp joints of underground AWWA ductile iron water lines to prevent joint separation due to excessive water pressure.	
Ordering:	Specify figure number, finish and size.	

PIPE SIZE	ROD SIZE	PLAIN	E.G./ H.D.G/ SS/SX
3	3/4	85.34	POA
4	3/4	109.85	
6	3/4	122.01	
8	3/4	140.01	
10	3/4	161.88	
12	3/4	186.25	
14	1	616.58	
16	1-1/8	770.70	
18	1-1/4	963.40	
20	1-3/8	1,437.76	
24	1-1/2	2,556.90	

FIG. 801

medium welded bracket

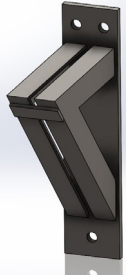


Materials/ Finishes:	Plain Carbon Steel (801B)	Electro-Galvanized (801G)
	Hot-Dip Galvanized (801HDG)	T-304 Stainless Steel (801SS)
	T-316 Stainless Steel (801SX)	
Service:	Recommended for the support of pipe loads up to 1500 lbs Constructed of facing angle iron with 1" space. The bracket provides maximum lateral adjustment when carrying or suspending pipe.	
Approvals:	Complies with Federal Specification WW-H-171-E (Type# 33), A-A-1192 A (Type# 32) and Manufacturers' Standardization Society MSS SP 58 and SP 69 (Type#32).	
Ordering:	Specify figure number, finish and size number.	

BRACKET SIZE	PLAIN
1	502.72
2	600.72
3	877.70

FIG. 802

heavy welded bracket

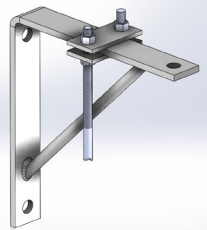


Materials/ Finishes:	Plain Carbon Steel (802B)	Electro-Galvanized (802G)
	Hot-Dip Galvanized (802HDG)	T-304 Stainless Steel (802SS)
	T-316 Stainless Steel (802SX)	
Service:	Recommended for the support of pipe loads up to 3000 lbs. Constructed of facing angle iron with 1" space. The bracket provides maximum lateral adjustment when carrying or suspending pipe.	
Approvals:	Complies with Federal Specification WW-H-171-E (Type# 34), A-A-1192 A (Type# 33) and Manufacturers' Standardization Society MSS SP 58 and SP 69 (Type# 33).	
Ordering:	Specify figure number, finish and size number.	

BRACKET SIZE	PLAIN
1	654.02
2	825.78
3	1,166.13
4	1,512.24
5	2,447.09
6	2,772.45

FIG. 820 & 820C

light welded steel bracket and clip



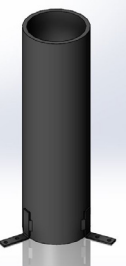
Materials/ Finishes:	Plain Carbon Steel (820B)	Electro-Galvanized (820G)
	Hot-Dip Galvanized (820HDG)	T-304 Stainless Steel (820SS)
	T-316 Stainless Steel (820SX)	
Service:	Recommended for the suspension of hanger rod for support of light loads up to 750 lbs. Rod can be suspended at any point along the length of the bracket, thus providing horizontal adjustment, using figure #820C clip which consists of two steel plates joined by a bolt and nut in one end.	
Approvals:	Fig. 820 complies with Federal Specification WW-H-171-E (Type# 32), A-A-1192 A (Type# 31) and Manufacturers' Standardization Society MSS SP 58 and SP 69 (Type# 31).	
Ordering:	Specify figure number, finish and size number	
Notes:	Piping suspended from FIG. 820C clip shall not exceed 3-1/2" in diameter. Side clip (FIG. 820C) to be ordered separately.	

820 LIGHT WELDED STEEL BRACKET	
PIPE SIZE	PLAIN
1	154.86
2	160.57
3	218.03

820C CLIP FOR 820 BRACKET	
PIPE SIZE	PLAIN
1	16.66
2	20.03

FIG. 900

nailing sleeve

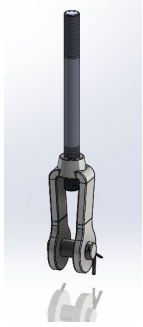


Materials/ Finishes:	Electro-Galvanized (900G) POA
Service:	When attached to roof decking, sleeve provides a channel for piping, eliminating the need to core drill. Optional tabs facilitate fastening to deck. Optional covers seal out wet cement during pour and safely cover sleeve until pipe installation.
Ordering:	Specify diameter, height, and figure number, with or without tabs. Covers must be ordered separately.



FIG. 909 & 909I

forged steel clevis



Materials/ Finishes:	Plain Carbon Steel: Import (909BI)	Hot-Dip Galvanized: Import (909HDG1)
	T-316 Stainless Steel (909SX)	
Variants:	Plain Carbon Steel (909B) POA	Electro-Galvanized (909G) POA
	Hot-Dip Galvanized (909HDG) POA	T-316 Stainless Steel (909SX) POA
Service:	Designed for use on high temperature piping installations.	
Approvals:	Complies with Federal Specification WW-H-171-E (Type# 14), A-A-1192 A (Type# 14) and Manufacturers' Standardization Society MSS SP 58 and SP 69 (Type# 14).	
Ordering:	Specify size number, rod size, finish and part number. If other than standard dimension sizes required, specify size number, rod size, pin size and grip.	
Notes:	Forged clevis are standardly supplied with pin and cotter pins. When figure number 909I is supplied hot-dip galvanized the threading is not tapped oversize.	

BODY SIZE	AVAILABLE TAP SIZE	PRICE / EACH IMPORTED	
		PLAIN	H.D.G
2	3/8, 1/2, 5/8	76.62	95.91
2-1/2	3/4, 7/8	171.26	193.48
3	1, 1-1/8, 1-1/4	277.17	311.75
3-1/2	1-1/2	480.87	544.20

FIG. 910

pipe sleeve with welded lugs

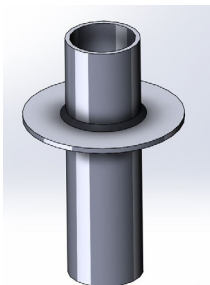


Materials/ Finishes:	Plain Carbon Steel (910B)	Electro-Galvanized (910G)
Service:	When attached to concrete forms, sleeve provides smooth sealable channel for piping, eliminating the need to core drill. Nailing lugs facilitate fastening to forms.	
Ordering:	Specify pipe size (A dimension), length, figure number and finish.	
Notes:	PRICED ON APPLICATION	



FIG. 915

waterproof sleeve

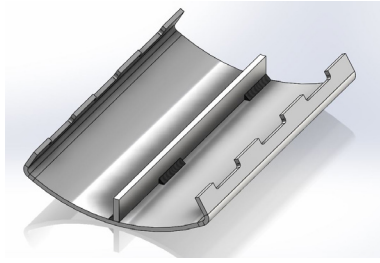


Materials/ Finishes:	Plain Carbon Steel (915B)	Electro-Galvanized (915G)
Service:	When installed in concrete forms, sleeve provides smooth, sealable channel for piping. Water stop prevents water migration around outside of sleeve.	
Ordering:	Specify nominal pipe size (A dimension), overall length, B dimension, figure number and finish.	
Notes:	PRICED ON APPLICATION	



FIG. 1900 -1905

pipe covering protection saddle series



Materials/ Finishes:	Plain Carbon Steel (1900B)	Electro-Galvanized (1900G)	
	Hot-Dip Galvanized (1900HDG)	T-304 Stainless Steel (1900SS)	
	T-316 Stainless Steel (1900SX)		
Variants:	1" Insulation (1900)	1-1/2" Insulation (1901)	2" Insulation (1902)
	2-1/2" Insulation (1903)	3" Insulation (1904)	4" Insulation (1905)
Service:	Designed for use on insulated high temperature pipe lines to protect insulation from damage and minimize heat loss.		
Approvals:	Complies with Federal Specification WW-H-171-E (Type# 40A and 40B), A-A-1192 A (Type# 39A and 39B) and Manufacturers' Standardization Society MSS SP 58 and SP 69 (Type#39A and 39B).		
Ordering:	Specify figure number, finish and insulation size.		
Notes:	EG, HDG, SS, SX PRICED ON APPLICATION		

1900 1" INSULATION	
PIPE SIZE	PLAIN
1/2	29.12
3/4	29.12
1	29.12
1-1/4	29.12
1-1/2	30.80
2	30.80
2-1/2	30.80
3	35.32
3-1/2	40.43
4	40.43
5	40.43
6	58.60
8	75.08
10	75.08
12	124.59

1901 1-1/2" INSULATION	
PIPE SIZE	PLAIN
3/4	34.83
1	40.43
1-1/4	40.43
1-1/2	40.43
2	40.43
2-1/2	41.03
3	41.03
3-1/2	41.03
4	41.03
5	41.03
6	75.50
8	88.68
10	88.68
12	135.61
14	135.61
16	154.25
18	169.18
20	195.23
24	238.18

1902 2" INSULATION	
PIPE SIZE	PLAIN
3/4	38.45
1	38.45
1-1/4	38.45
1-1/2	42.65
2	42.65
2-1/2	42.65
3	47.40
3-1/2	47.40
4	47.40
5	47.40
6	76.04
8	90.06
10	101.74
12	148.60
14	148.60
16	197.33
18	197.33
20	212.61
24	239.33

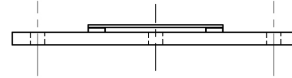
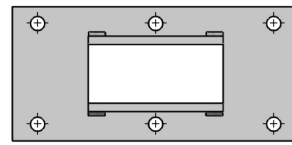
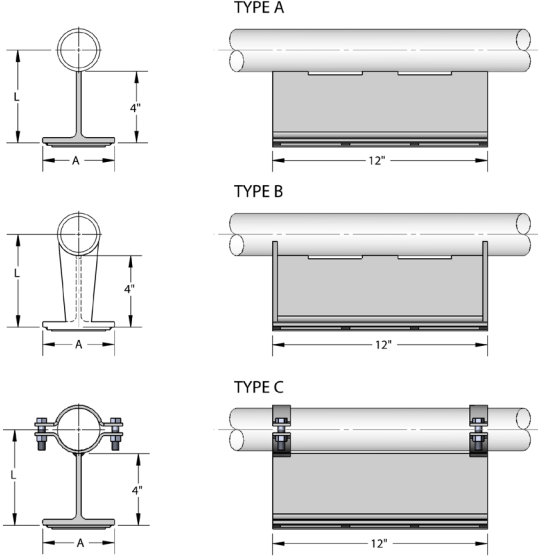
1903 2-1/2" INSULATION	
PIPE SIZE	PLAIN
1-1/4	50.12
1-1/2	50.12
2	50.12
2-1/2	53.24
3	53.24
3-1/2	57.76
4	57.76
5	57.76
6	95.06
8	106.37
10	106.37
12	106.37
14	106.37
16	208.23
18	226.81
20	224.81
24	267.36

1904 3" INSULATION	
PIPE SIZE	PLAIN
2	55.29
2-1/2	55.29
3	66.78
3-1/2	66.78
4	66.78
5	66.78
6	115.82
8	115.82
10	126.88
12	177.24
14	177.24
16	214.35
18	214.35
20	244.26
24	284.86

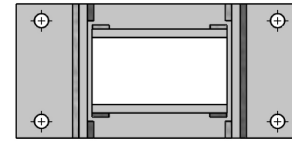
1905 4" INSULATION	
PIPE SIZE	PLAIN
4	91.92
5	91.92
6	151.19
8	151.19
10	162.32
12	216.94
14	216.94
16	271.93
18	278.79
20	352.07
24	377.34

FIG. 4000 SERIES

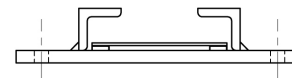
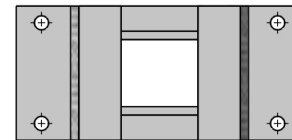
pipe slide tees and slide plates



TYPE A



TYPE B

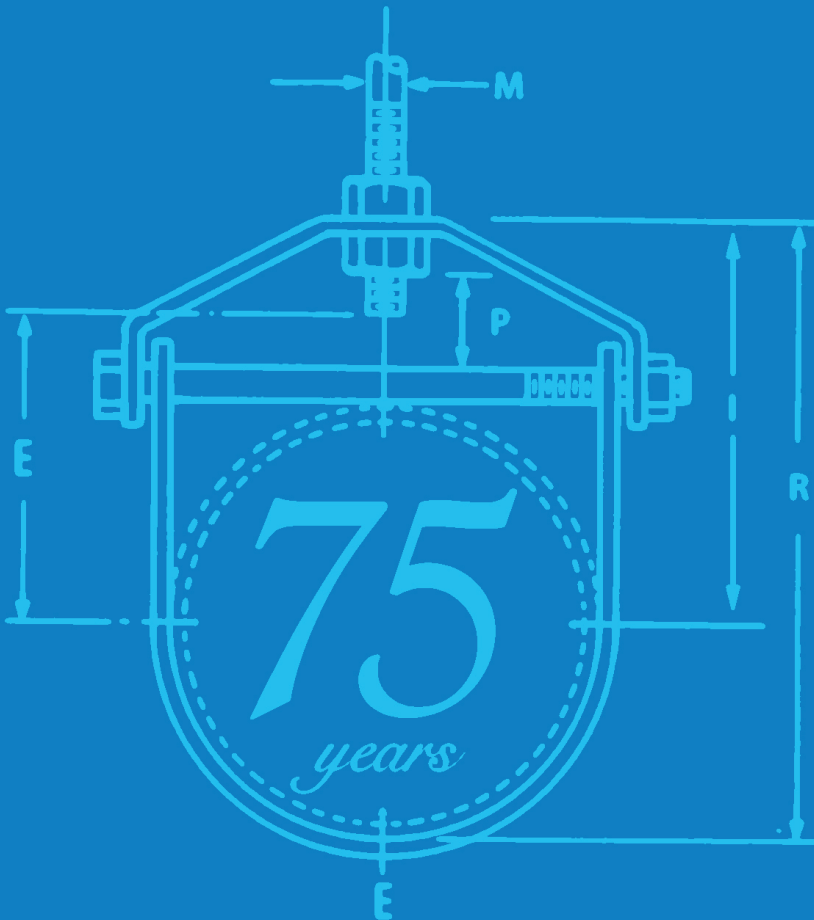
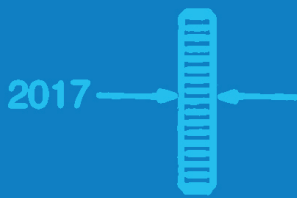
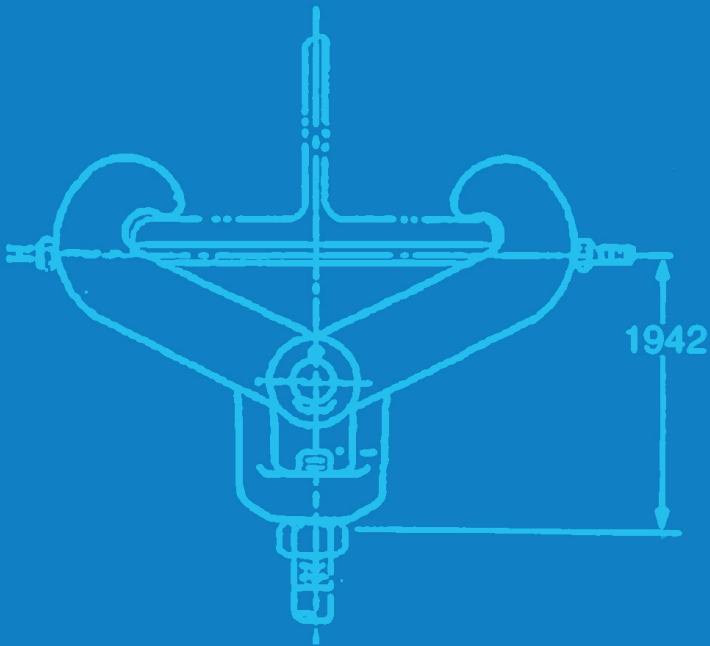


TYPE C

Materials/ Finishes:	Plain Carbon Steel (4000B)	Hot-Dip Galvanized (4000HDG)
	T-304 Stainless (4000SS)	T-316 Stainless (4000SX)
Service:	Designed for the support of pipe where horizontal movement may occur due to expansion and contraction and a low coefficient of friction is required. May be welded or clamped to pipe.	
Notes:	PLEASE CONTACT EMPIRE FOR MORE INFORMATION AND ORDERING.	

NOTES

contact empire first: 1 800 243 4844



Strut and Strut Accessories
Base Price List.
v|06102019.2

SERIES: 7000

strut channel

7000 7001

12 ga strut solid and slotted
1-5/8" x 1-5/8"



Type:	7000 (Solid)	7001 (Slotted)
Materials/ Finishes:	Zinc Plated (7000Z)	Zinc Plated (7001Z)
	T-304 Stainless (7000SS) POA	T-304 Stainless (7001SS)
	T-316 Stainless (7000SX) POA	T-316 Stainless (7001SX) POA
Lengths:	10' & 20'	10' & 20'
Notes:	500 ft. minimum on solid strut.	

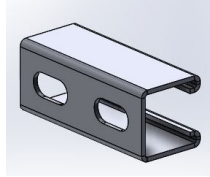
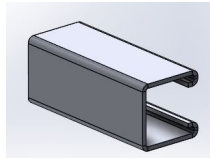


FIG. NO.	LENGTH	TYPE	ZINC	PAINTED	SS
7000	10'	SOLID	107.40	109.88	POA
7000	20'	SOLID	214.79	219.79	
7001	10'	SLOTTED	107.40	109.88	724.29
7001	20'	SLOTTED	214.79	219.79	1,448.59

7000A 7001A

12 ga back to back strut
solid and slotted
1-5/8" x 1-5/8"



Type:	7000A (Solid)	7001A (Slotted)
Materials/ Finishes:	Zinc Plated (7000AZ)	Zinc Plated (7001AZ)
	T-304 Stainless (7000ASS) POA	T-304 Stainless (7001ASS) POA
	T-316 Stainless (7000ASX) POA	T-316 Stainless (7001ASX) POA
Lengths:	10' & 20'	10' & 20'
Notes:	500 ft. minimum	

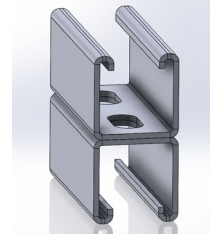
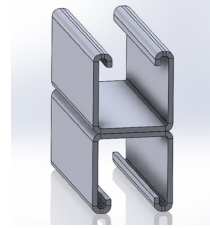


FIG. NO.	LENGTH	TYPE	ZINC	PAINTED
7000A	10'	SOLID	335.46	361.54
7000A	20'	SOLID	684.33	723.09
7001A	10'	SLOTTED	342.17	361.54
7001A	20'	SLOTTED	684.33	723.09

7100 7101

14 ga strut solid and slotted
1-5/8" x 1-5/8"



Type:	7100 (Solid)	7101 (Slotted)
Materials/ Finishes:	Zinc Plated (7100Z)	Zinc Plated (7101Z)
	T-304 Stainless (7100SS) POA	T-304 Stainless (7101SS)
	T-316 Stainless (7100SX) POA	T-316 Stainless (7101SX) POA
Lengths:	10' & 20'	10' & 20'
Notes:	500 ft. minimum on solid strut.	

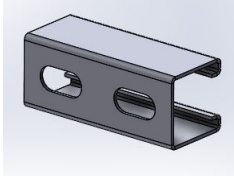
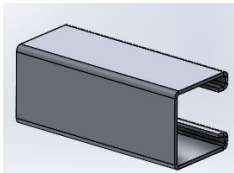


FIG. NO.	LENGTH	TYPE	ZINC	PAINTED	SS
7100	10'	SOLID	86.20	86.20	POA
7100	20'	SOLID	172.33	172.33	
7101	10'	SLOTTED	87.41	87.41	611.91
7101	20'	SLOTTED	174.83	174.83	1,223.81

7200 7201

14 ga strut solid and slotted
13/16" x 1-5/8"



Type:	7200 (Solid)	7201 (Slotted)
Materials/ Finishes:	Zinc Plated (7200Z)	Zinc Plated (7201Z)
	T-304 Stainless (7200SS)	T-304 Stainless (7201SS)
	T-316 Stainless (7200SX) POA	T-316 Stainless (7201SX) POA
Lengths:	10' & 20'	10' & 20'
Notes:	500 ft minimum on solid strut	

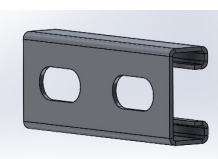
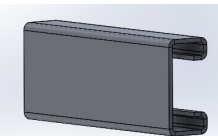


FIG. NO.	LENGTH	TYPE	ZINC	PAINTED	SS
7200	10'	SOLID	68.73	69.93	437.08
7200	20'	SOLID	137.36	139.87	874.15
7201	10'	SLOTTED	68.73	69.93	437.08
7201	20'	SLOTTED	137.36	139.87	874.15

SERIES: 7000

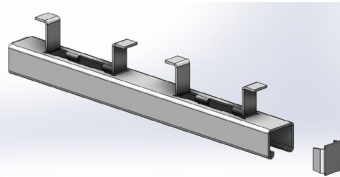
strut channel

7225

12ga continuous concrete insert
1-3/8" x 1-5/8"



Type:	7225	
Materials/ Finishes:	Plain (7225B) POA	Zinc Plated (7225Z) POA
Lengths:	10' & 20'	10' & 20'
Notes:	500 ft. minimum	



7230 7231

12 ga strut solid and slotted
2-7/16" x 1-5/8"



Type:	7230 (Solid)	7231 (Slotted)
Materials/ Finishes:	Zinc Plated (7230Z) T-304 Stainless (7230SS) POA T-316 Stainless (7230SX) POA	Zinc Plated (7231Z) T-304 Stainless (7231SS) POA T-316 Stainless (7231SX) POA
Lengths:	10' & 20'	10' & 20'
Notes:	500 ft. minimum	

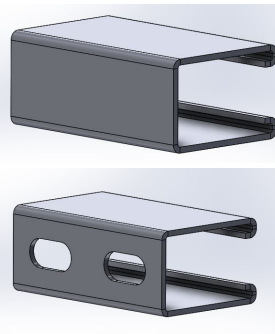


FIG. NO.	LENGTH	TYPE	ZINC	PAINTED
7230	10'	SOLID	POA	POA
7230	20'	SOLID		
7231	10'	SLOTTED	264.04	
7231	20'	SLOTTED	POA	

7240 7241

12 ga back to back strut
solid and slotted
2-7/16" x 1-5/8"



Type:	7241 (Solid)	7240 (Slotted)
Materials/ Finishes:	Zinc Plated (7241Z) T-304 Stainless (7241SS) POA T-316 Stainless (7241SX) POA	Zinc Plated (7240Z) T-304 Stainless (7240SS) POA T-316 Stainless (7240SX) POA
Lengths:	10' & 20'	10' & 20'
Notes:	500 ft. minimum	



FIG. NO.	LENGTH	TYPE	ZINC	PAINTED
7240	10'	SLOTTED	598.81	670.63
7240	20'	SLOTTED	1,197.62	1,341.20
7241	10'	SOLID	POA	POA
7241	20'	SOLID		

7250 7251

12 ga strut solid and slotted
3-1/4" x 1-5/8"



Type:	7250 (Solid)	7251 (Slotted)
Materials/ Finishes:	Zinc Plated (7250Z) T-304 Stainless (7250SS) POA T-316 Stainless (7250SX) POA	Zinc Plated (7251Z) T-304 Stainless (7251SS) POA T-316 Stainless (7251SX) POA
Lengths:	10' & 20'	10' & 20'
Notes:	500 ft. minimum	



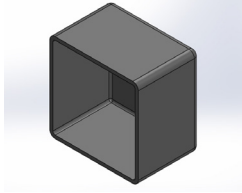
FIG. NO.	LENGTH	TYPE	ZINC	PAINTED
7250	10'	SOLID	323.47	366.54
7250	20'	SOLID	646.86	733.07
7251	10'	SLOTTED	323.47	366.54
7251	20'	SLOTTED	646.86	733.07

SERIES: 7000

strut channel

7001EC 7201EC

strut end caps



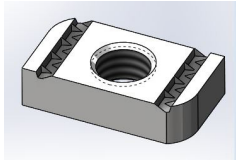
Type:	7001EC (For 1-5/8 x 1-5/8 Strut)	7201EC (For 1-5/8 x 13/16 Strut)
Materials/ Finishes:	Zinc Plated (EC)	PVC (EC-GRAY)
	PVC (EC-WHITE)	PVC Profiled (ECP-GRAY)
	PVC Profiled (ECP-WHITE)	
Service:	Used for covering the ends of strut channel	
Notes:	Specify figure number and finish. ALL PRICED ON APPLICATION. PVC AVAILABLE IN OTHER COLORS.	

SERIES: 8000

strut nuts

8000

strut nut w/o spring

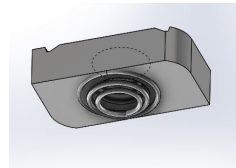


Materials/Finishes:	Zinc Plated (8000Z)
	T-316 Stainless (8000SX) POA

ROD SIZE	THICKNESS	PRICE EACH ZINC	STD. PKG.
#8-32	1/4	POA	100
#10-24	1/4		100
#10-32	1/4		100
1/4	1/4	1.87	100
5/16	3/8	2.94	100
3/8	3/8	2.08	100
7/16	3/8	3.29	100
1/2	3/8	2.35	100
1/2	1/2	2.99	100
5/8	1/2	4.95	100
3/4	1/2	5.93	100
7/8	1/2	9.29	100

8050

strut nut w/ short spring



Materials/Finishes:	Zinc Plated (8050Z)
	T-316 Stainless (8050SX) POA

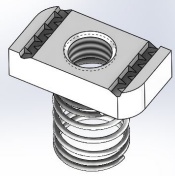
ROD SIZE	THICKNESS	PRICE EACH ZINC	STD. PKG.
#8-32	1/4	POA	100
#10-24	1/4	POA	100
#10-32	1/4	POA	100
1/4	1/4	1.50	100
5/16	3/8	3.51	100
3/8	3/8	2.01	100
7/16	3/8	3.93	100
1/2	3/8	2.22	100
5/8	1/2	8.28	100

SERIES: 8000

strut nuts

8100

strut nut w/ regular spring

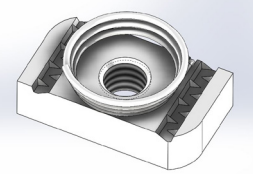


Materials/Finishes:	Zinc Plated (8100Z) T-316 Stainless (8100SX)
Notes:	Not to be used on 13/16" or 1" Strut.

ROD SIZE	THICKNESS	PRICE EACH ZINC	PRICE EACH SX	STD. PKG.
#8-32	1/4	POA	--	100
#10-24	1/4	POA	--	100
#10-32	1/4	POA	--	100
1/4	1/4	2.01	13.22	100
5/16	3/8	3.79	--	100
3/8	3/8	2.22	14.66	100
7/16	3/8	4.01	--	100
1/2	3/8	2.35	17.44	100
1/2	1/2	3.08	--	100
5/8	1/2	5.29	50.24	50
3/4	1/2	6.29	--	50
7/8	1/2	8.93	--	50

8150

top spring strut nut

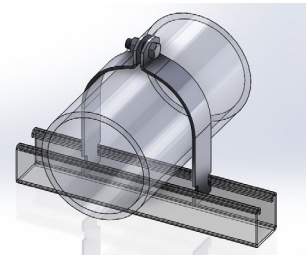


Materials/Finishes:	Zinc Plated (8150Z)
Notes:	To be used on 1-3/8" & 1-5/8" strut.

ROD SIZE	THICKNESS	PRICE EACH ZINC	STD. PKG.
#8-32	1/4	POA	100
#10-24	1/4	POA	100
#10-32	1/4	POA	100
1/4	1/4	2.35	100
5/16	3/8	6.07	100
3/8	3/8	2.78	100
1/2	3/8	2.99	100

SERIES: 8200

rigid ips strut clamp assembled



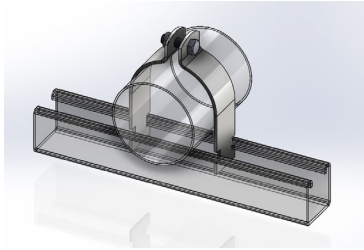
Materials/Finishes:	Zinc Plated (8200Z) T-304 Stainless (8200SS) T-316 Stainless (8200SX)
Service:	Designed to steady a horizontal run of pipe against a perpendicular section of strut.
Ordering:	Specify figure number, finish and pipe size.

PIPE SIZE	ZINC PLATED	SS	SX	STD. PKG.
3/8	2.86	--	POA	100
1/2	2.94	11.94		100
3/4	2.99	12.86		100
1	3.29	13.44		100
1-1/4	3.93	14.22		100
1-1/2	4.36	18.51		50
2	5.65	21.73		50
2-1/2	6.36	25.09		50
3	7.51	27.09		50
3-1/2	9.29	39.67		25
4	9.59	35.66		25
5	13.22	70.97		25
6	16.43	89.83	25	
8	22.52	110.14	25	
10	27.80	106.07	25	
12	63.89	125.57	25	

NO-HUB CAST IRON SOIL PIPE CLAMP SIZES	
NO-HUB CAST IRON NOMINAL PIPE SIZE	USE THE FOLLOWING STRUT CLAMP
1-1/2	1-1/2 IPS
2	2 IPS

8250

od tubing strut clamp assembled



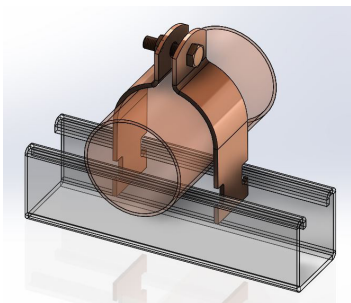
Materials/ Finishes	Zinc Plated (8250Z)	T-304 Stainless (8250SS)
	T-316 Stainless (8250SX) POA	
Service:	Designed to steady a horizontal run of pipe against a perpendicular section of strut.	
Ordering:	Specify figure number, finish and pipe size.	
Notes:	* For 2-3/8" order 8200SS 2"	

NO-HUB CAST IRON SOIL PIPE CLAMP SIZES	
NO-HUB CAST IRON NOMINAL PIPE SIZE	USE THE FOLLOWING STRUT CLAMP
3	3-3/8 OD
4	4-3/8 OD
5	5-3/8 OD
6	6-3/8 OD
8	8-3/8 OD
10-12	CALL

OD PIPE SIZE	ZINC PLATED	SS	STD. PKG.	OD PIPE SIZE	ZINC PLATED	SS	STD. PKG.
1/4	4.64	POA	100	3-3/4	15.01	POA	25
3/8	4.73		100	3-7/8	15.30		25
1/2	4.78		100	4	15.66		25
5/8	4.86		100	4-1/8	16.59		25
3/4	4.95		100	4-1/4	16.86		25
7/8	5.08		100	4-3/8	17.23		25
1	5.50		100	4-1/2	17.58		25
1-1/8	5.65		100	4-5/8	17.86		25
1-1/4	5.71		100	4-3/4	18.08		25
1-3/8	6.15		100	4-7/8	18.65		25
1-1/2	6.44		100	5	18.93		25
1-5/8	6.55		100	5-1/8	19.23		25
1-3/4	7.51		100	5-1/4	19.50		25
1-7/8	7.80		100	5-3/8	19.80		25
2	8.15		100	5-1/2	20.00		25
2-1/8	8.36		50	5-5/8	27.01		25
2-1/4	8.65		50	5-3/4	27.72		25
2-3/8	8.93		*see note	50	5-7/8		27.94
2-1/2	9.22	POA	50	6	28.46	25	
2-5/8	9.50		50	6-1/8	28.10	25	
2-3/4	9.81		50	6-1/4	28.16	25	
2-7/8	10.14		50	6-3/8	28.24	25	
3	10.36		50	6-1/2	28.31	25	
3-1/8	10.66		50	6-5/8	28.37	25	
3-1/4	10.93		50	6-3/4	28.46	25	
3-3/8	11.01		50	6-7/8	28.52	25	
3-1/2	11.15		50	7	28.59	25	
3-5/8	13.93		25	--	--	--	--

SERIES: 8300

copper tubing strut pipe clamp assembled

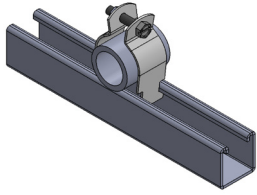


Materials/ Finishes	Copper Epoxy Coated <i>Copper-Gard</i> (8300CT)
	Copper Plated (8300CTP)
Service:	Designed to steady a horizontal run of copper tubing against a perpendicular section of strut.
Ordering:	Specify figure number, finish and pipe size.

TUBE SIZE	EPOXY COATED	COPPER PLATED	STD. PKG.
3/8	4.43	4.77	100
1/2	4.43	4.77	100
3/4	4.50	5.09	100
1	5.15	5.49	100
1-1/4	6.44	5.89	100
1-1/2	6.57	6.28	100
2	9.01	8.80	100
2-1/2	10.08	11.39	50
3	11.01	12.64	50
3-1/2	15.09	17.02	25
4	16.08	15.81	25
5	20.65	--	25
6	29.95	--	25

8350

universal strut pipe clamp assembled

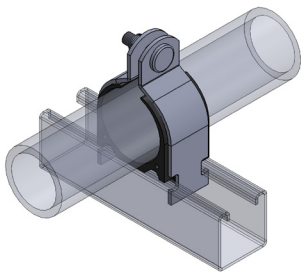


Materials/ Finishes	Zinc Plated Carbon Steel (8350Z)
Service:	Designed to steady a horizontal run of pipe against a perpendicular section of strut.
Ordering:	Specify figure number, finish and pipe size. ABOVE 2" ORDER 8200Z.

PIPE SIZE	PRICE/EACH	STD. PKG.
1/2	2.51	100
3/4	2.78	100
1	2.99	100
1-1/4	3.29	100
1-1/2	3.64	100
2	4.15	50

8500

cushion strut clamp

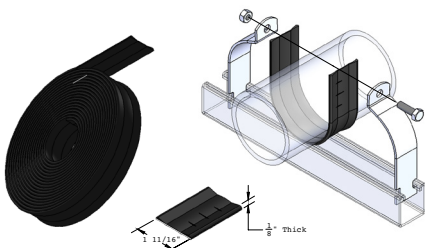


Materials/ Finishes	Zinc Plated Carbon Steel (8500Z)	T-304 Stainless (8500SS)
	T-316 Stainless (8500SS) POA	
Service:	Designed to steady a horizontal run of pipe against a perpendicular section of strut.	
Ordering:	Specify figure number, finish and pipe size.	
Notes:	Also available in larger sizes. Thermoplastic insulating liner.	

OD PIPE SIZE	NOM TUBE SIZE	IPS SIZE	EG	SS	STD. PKG.
1/4	1/8	--	11.08	32.67	25
3/8	1/4	--	11.08	32.67	25
1/2	3/8	--	11.08	35.45	25
5/8	1/2	--	11.08	39.39	25
3/4	5/8	3/8	13.58	44.03	25
7/8	3/4	1/2	13.73	46.54	25
1	7/8	3/4	14.81	52.61	25
1-1/8	1	--	15.09	60.04	25
1-1/4	1-1/8	--	19.02	64.25	10
1-3/8	1-1/4	1	19.23	69.26	10
1-1/2	1-3/8	--	22.37	74.39	10
1-5/8	1-1/2	1-1/4	23.73	POA	10
1-3/4	1-5/8	--	31.31		10
1-7/8	1-3/4	1-1/2	32.67		10
2	1-7/8	--	44.67		10
2-1/8	2	--	44.95		10
2-3/8	2-1/4	2	55.97		10
2-5/8	2-1/2	--	57.53		10
3-1/8	3	--	73.05		10
4-1/8	4	--	147.67		10

8550

cushion pipe wrap

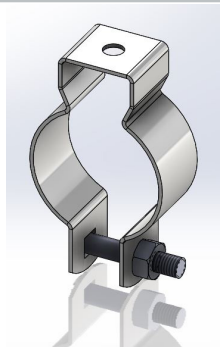


Material:	Elastomer (EPDM)
Dimensions:	1/8" thick x 1-11/16" wide
Service:	Designed for use with HVAC, refrigeration and hydraulic lines to provide protection from galvanic action between dissimilar meta and to absorb vibration between pipe and mounting hardware. Wrap can be cut to size for any pipe material.
Service Temperature:	-70° to +300° F

SIZE	PRICE/ROLL
25' ROLL	258.36

8575

conduit clamp with bolt and nut



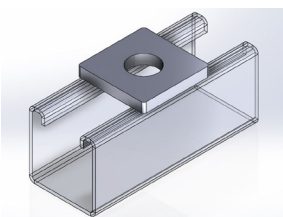
Materials/ Finishes:	Zinc Plated Carbon Steel (8575Z) POA	T-316 Stainless (8575SX) POA
Service:	Designed for suspending light pipe or conduit.	
Ordering:	Specify figure number, finish, pipe/conduit type and size.	

SIZE	ZINC PLATED	SX	WGT EACH (LBS)
1/2	POA	POA	0.062
3/4			0.08
1			0.10
1-1/4			0.11
1-1/2			0.12
2			0.23

9001FF - 9008FF

flat fittings: linear

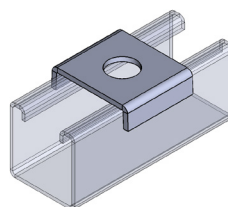
9001FF
square strut washer



Materials/ Finishes:	Zinc Plated (9001FFZ) T-304 Stainless (9001FFSS) T-316 Stainless (9001FFSX) POA
Thickness:	1/4"

ROD SIZE	ZINC PLATED	SS	STD. PKG
1/4	2.94	10.84	100
3/8	2.94	10.84	100
1/2	2.94	10.84	100
5/8	3.01	POA	100
3/4	3.14		100
7/8			100

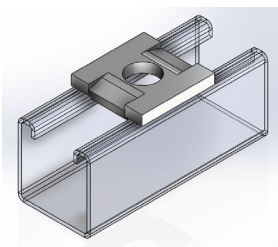
9001UFF
u-saddle strut washer



Materials/ Finishes:	Zinc Plated (9001UFFZ) T-304 Stainless (9001UFFSS) T-316 Stainless (9001UFFSX)
Thickness:	1/4"

ROD SIZE	PRICE/ EACH	STD. PKG
3/8	POA	100
1/2		100
5/8		50
3/4		50

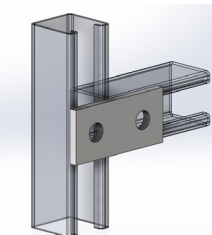
9002FF
square strut washer w/ guides



Materials/ Finishes:	Zinc Plated (9002FFZ) T-304 Stainless (9002FFSS) POA T-316 Stainless (9002FFSX) POA
Thickness:	1/4"

ROD SIZE	PRICE/ EACH	STD. PKG
1/4	2.85	100
3/8	2.85	100
1/2	2.85	100
5/8	3.27	100

9003FF
2-hole splice plate
1-5/8" x 3-1/2"



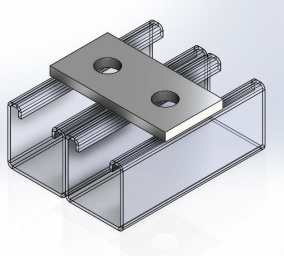
Materials/ Finishes:	Zinc Plated (9003FFZ) T-304 Stainless (9003FFSS) POA T-316 Stainless (9003FFSX) POA
Thickness:	1/4"
Hole Dim:	9/16"

PRICE/ EACH	STD. PKG
6.57	50

9001FF - 9008FF

flat fittings: linear

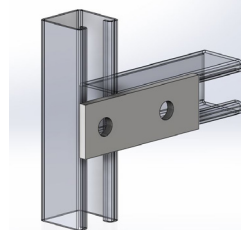
9004FF
2-hole splice plate
side to side strut
1-5/8" x 3-1/4"



Materials/ Finishes:	Zinc Plated (9004FFZ)
	T-304 Stainless (9004FFSS) POA
	T-316 Stainless (9004FFSX) POA
Thickness:	1/4"
Hole Dim:	9/16"

PRICE/ EACH	STD. PKG
7.00	50

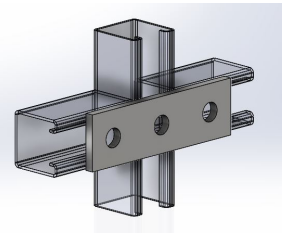
9005FF
2-hole splice plate
1-5/8" x 4-5/8"



Materials/ Finishes:	Zinc Plated (9005FFZ)
	T-304 Stainless (9005FFSS) POA
	T-316 Stainless (9005FFSX) POA
Thickness:	1/4"
Hole Dim:	9/16"

PRICE/ EACH	STD. PKG
10.50	50

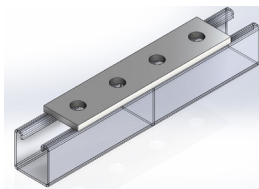
9006FF
3-hole splice plate
1-5/8" x 5-3/8"



Materials/ Finishes:	Zinc Plated (9006FFZ)
	T-304 Stainless (9006FFSS) POA
	T-316 Stainless (9006FFSX) POA
Thickness:	1/4"
Hole Dim:	9/16"

PRICE/ EACH	STD. PKG
9.59	50

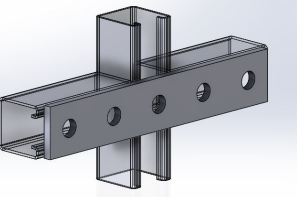
9007FF
4-hole splice plate



Materials/ Finishes:	Zinc Plated (9007FFZ)
	T-304 Stainless (9007FFSS)
	T-316 Stainless (9007FFSX) POA
Thickness:	1/4"
Hole Dim:	9/16"

ZINC PLATED	SS	STD. PKG
12.44	43.46	25

9008FF
5-hole splice plate
1-5/8" x 9-1/8"



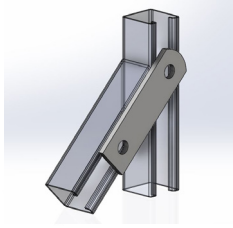
Materials/ Finishes:	Zinc Plated (9008FFZ)
	T-304 Stainless (9008FFSS) POA
	T-316 Stainless (9008FFSX) POA
Thickness:	1/4"
Hole Dim:	9/16"

PRICE/ EACH	STD. PKG
19.15	25

9009FF - 9020FF

flat fittings: corners

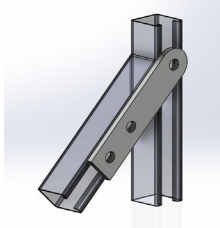
9009FF
2-hole swivel plate
1-5/8" x 5-1/4"



Materials/ Finishes:	Zinc Plated (9009FFZ)
Thickness:	1/4"
Hole Dim:	9/16"

PRICE/ EACH	STD. PKG
15.66	25

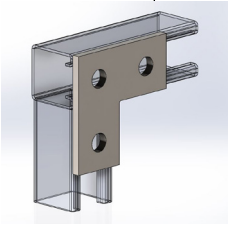
9010FF
3-hole swivel plate
1-5/8" x 7-1/8"



Materials/ Finishes:	Zinc Plated (9010FFZ)
	T-304 Stainless (9010FFSS) POA
	T-316 Stainless (9010FFSX) POA
Thickness:	1/4"
Hole Dim:	9/16"

PRICE/ EACH	STD. PKG
20.16	25

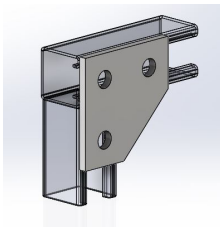
9011FF
3-hole corner plate
3-1/2" x 3-1/2"



Materials/ Finishes:	Zinc Plated (9011FFZ)
	T-304 Stainless (9011FFSS) POA
	T-316 Stainless (9011FFSX) POA
Thickness:	1/4"
Hole Dim:	9/16"

PRICE/ EACH	STD. PKG
13.73	50

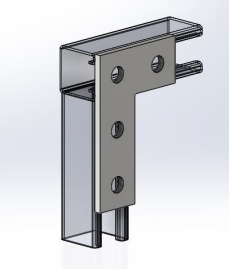
9012FF
3-hole corner gusset
3-1/2" x 3-1/2"



Materials/ Finishes:	Zinc Plated (9012FFZ)
Thickness:	1/4"
Hole Dim:	9/16"

PRICE/ EACH	STD. PKG
23.79	25

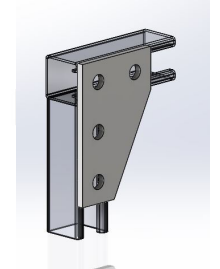
9014FF
4-hole corner plate
3-1/2" x 5-3/8"



Materials/ Finishes:	Zinc Plated (9014FFZ)
	T-304 Stainless (9014FFSS) POA
	T-316 Stainless (9014FFSX) POA
Thickness:	1/4"
Hole Dim:	9/16"

PRICE/ EACH	STD. PKG
19.50	20

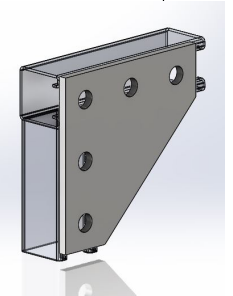
9015FF
4-hole corner gusset
3-1/2" x 5-3/8"



Materials/ Finishes:	Zinc Plated (9015FFZ)
Thickness:	1/4"
Hole Dim:	9/16"

PRICE/ EACH	STD. PKG
24.66	25

9020FF
5-hole corner gusset
5-3/8" x 5-3/8"



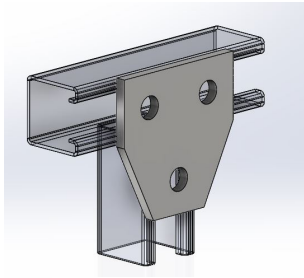
Materials/ Finishes:	Zinc Plated (9020FFZ)
Thickness:	1/4"
Hole Dim:	9/16"

PRICE/ EACH	STD. PKG
40.60	10

9013FF - 9021FF

flat fittings: tees and crosses

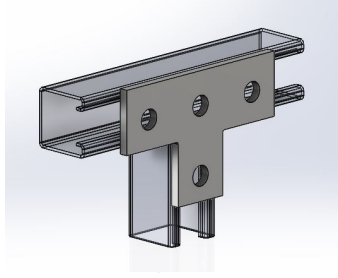
9013FF
3-hole tee gusset
3-1/2" x 3-1/2"



Materials/ Finishes:	Zinc Plated (9013FFZ)
Thickness:	1/4"
Hole Dim:	9/16"

PRICE/ EACH	STD. PKG
23.16	50

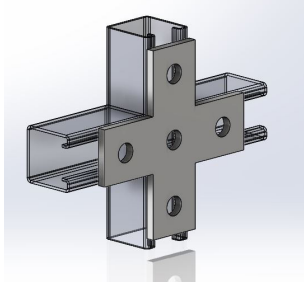
9016FF
4-hole tee plate
3-1/2" x 5-3/8"



Materials/ Finishes:	Zinc Plated (9016FFZ)
	T-304 Stainless (9016FFSS) POA
	T-316 Stainless (9016FFSX) POA
Thickness:	1/4"
Hole Dim:	9/16"

PRICE/ EACH	STD. PKG
21.50	25

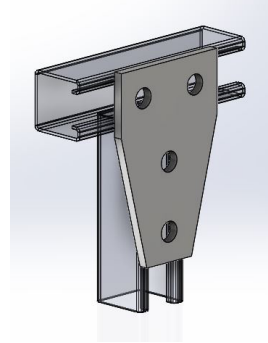
9017FF
4-hole cross plate
5-3/8" x 5-3/8"



Materials/ Finishes:	Zinc Plated (9017FFZ)
	T-304 Stainless (9017FFSS) POA
	T-316 Stainless (9017FFSX) POA
Thickness:	1/4"
Hole Dim:	9/16"

PRICE/ EACH	STD. PKG
36.95	25

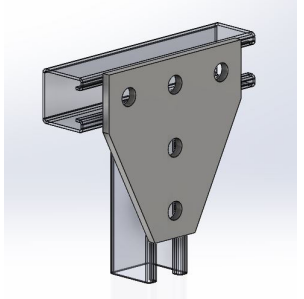
9018FF
4-hole tee gusset
3-1/2" x 5-3/8"



Materials/ Finishes:	Zinc Plated (9018FFZ)
Thickness:	1/4"
Hole Dim:	9/16"

PRICE/ EACH	STD. PKG
25.30	25

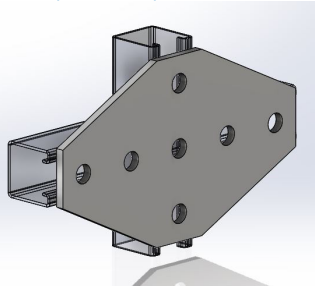
9019FF
5-hole tee gusset
5-3/8" x 5-3/8"



Materials/ Finishes:	Zinc Plated (9019FFZ)
Thickness:	1/4"
Hole Dim:	9/16"

PRICE/ EACH	STD. PKG
41.68	25

9021FF
7-hole cross gusset
5-3/8" x 9-1/8"



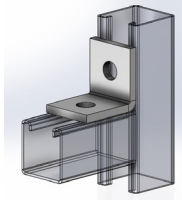
Materials/ Finishes:	Zinc Plated (9021FFZ)
Thickness:	1/4"
Hole Dim:	9/16"

PRICE/ EACH	STD. PKG
63.46	10

9022CA - 9043CA

corner angles

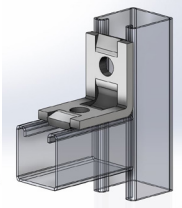
9022CA
2-hole corner angle
1-7/8" x 2"



Materials/ Finishes:	Zinc Plated (9022CAZ)
	T-304 Stainless (9022CASS)
	T-316 Stainless (9022CASX)
Thickness:	1/4"
Hole Dim:	9/16"

ZINC	SS	SX	STD. PKG
5.65	30.80	37.38	50

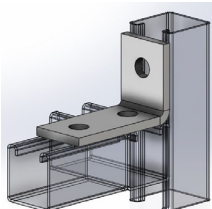
9024CA
2-hole corner angle
w/ guides
1-5/8" x 2-1/4"



Materials/ Finishes:	Zinc Plated (9024CAZ)
	T-304 Stainless (9024CASS)
	T-316 Stainless (9024CASX)
Thickness:	1/4"
Hole Dim:	9/16"

PRICE/ EACH	STD. PKG
12.58	50

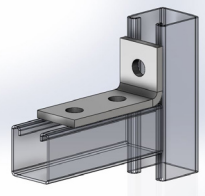
9026CA
3-hole corner angle
2-1/4" x 3-1/2"



Materials/ Finishes:	Zinc Plated (9026CAZ)
	T-304 Stainless (9026CASS) POA
	T-316 Stainless (9026CASX) POA
Thickness:	1/4"
Hole Dim:	9/16"

PRICE/ EACH	STD. PKG
10.57	25

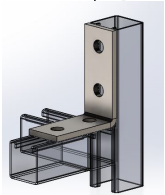
9028CA
3-hole corner angle
1-7/8" x 3-7/8"



Materials/ Finishes:	Zinc Plated (9028CAZ)
	T-304 Stainless (9028CASS)
	T-316 Stainless (9028CASX)
Thickness:	1/4"
Hole Dim:	9/16"

PRICE/ EACH	STD. PKG
11.78	25

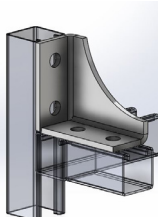
9030CA
4-hole corner angle
3-1/2" x 4-1/8"



Materials/ Finishes:	Zinc Plated (9030CAZ)
	T-304 Stainless (9030CASS) POA
	T-316 Stainless (9030CASX) POA
Thickness:	1/4"
Hole Dim:	9/16"

ZINC	SS	SX	STD. PKG
11.65	62.82	70.55	25

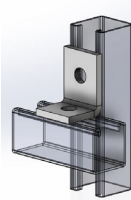
9032CA
4-hole webbed
corner angle, r.h.
3-1/2" x 4-1/8"



Materials/ Finishes:	Zinc Plated (9032CAZ)
	T-304 Stainless (9032CASS)
	T-316 Stainless (9032CASX)
Thickness:	1/4"
Hole Dim:	9/16"

PRICE/ EACH	STD. PKG
31.67	10

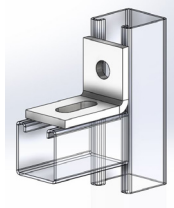
9023CA
2-hole corner angle
1-5/8" x 2-1/4"



Materials/ Finishes:	Zinc Plated (9023CAZ)
	T-304 Stainless (9023CASS)
	T-316 Stainless (9023CASX)
Thickness:	1/4"
Hole Dim:	9/16"

PRICE/ EACH	STD. PKG
6.57	25

9025CA
1-hole adjustable corner angle
w/ slot
1-5/8" x 2-1/4"



Materials/ Finishes:	Zinc Plated (9025CAZ)
	T-304 Stainless (9025CASS)
	T-316 Stainless (9025CASX)
Thickness:	1/4"
Hole Dim:	9/16"

PRICE/ EACH	STD. PKG
15.23	50

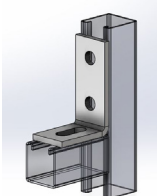
9027CA
3-hole corner angle
1-5/8" x 4-1/8"



Materials/ Finishes:	Zinc Plated (9027CAZ)
	T-304 Stainless (9027CASS) POA
	T-316 Stainless (9027CASX) POA
Thickness:	1/4"
Hole Dim:	9/16"

PRICE/ EACH	STD. PKG
10.57	25

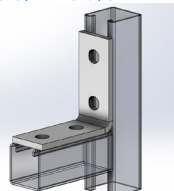
9029CA
2-hole adjustable corner angle
w/ slot
2-5/8" x 3-7/8"



Materials/ Finishes:	Zinc Plated (9029CAZ)
	T-304 Stainless (9029CASS)
	T-316 Stainless (9029CASX)
Thickness:	1/4"
Hole Dim:	9/16"

PRICE/ EACH	STD. PKG
21.16	25

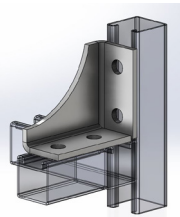
9031CA
4-hole corner angle
3-3/4" x 3-7/8"



Materials/ Finishes:	Zinc Plated (9031CAZ)
	T-304 Stainless (9031CASS) POA
	T-316 Stainless (9031CASX) POA
Thickness:	1/4"
Hole Dim:	9/16"

PRICE/ EACH	STD. PKG
13.15	25

9033CA
4-hole webbed
corner angle, l.h.
3-1/2" x 4-1/8"



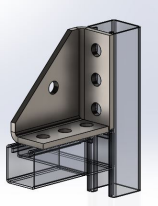
Materials/ Finishes:	Zinc Plated (9033CAZ)
	T-304 Stainless (9033CASS)
	T-316 Stainless (9033CASX)
Thickness:	1/4"
Hole Dim:	9/16"

PRICE/ EACH	STD. PKG
31.67	10

9022CA - 9043CA

corner angles (continued)

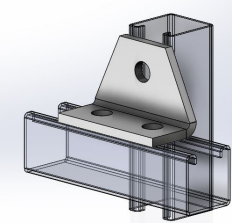
9034CA
7-hole universal
corner angle
4-1/8" x 4-1/8"



Materials/ Finishes:	Zinc Plated (9034CAZ)
Thickness:	1/4"
Hole Dim:	9/16"

PRICE/ EACH	STD. PKG
35.82	15

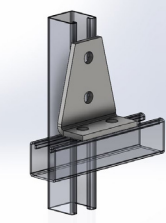
9035CA
3-hole shelf gusset angle
1-5/8" x 2-1/4"



Materials/ Finishes:	Zinc Plated (9035CAZ)
Thickness:	1/4"
Hole Dim:	9/16"

PRICE/ EACH	STD. PKG
21.59	25

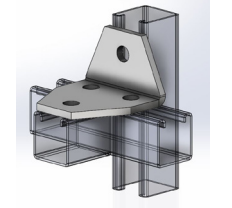
9036CA
4-hole shelf gusset angle
1-5/8" x 4-1/8"



Materials/ Finishes:	Zinc Plated (9036CAZ)
Thickness:	1/4"
Hole Dim:	9/16"

PRICE/ EACH	STD. PKG
28.59	25

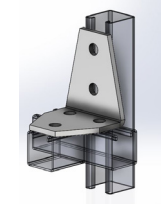
9037CA
4-hole shelf gusset
3-way angle
2-1/4" x 3-1/2"



Materials/ Finishes:	Zinc Plated (9037CAZ)
Thickness:	1/4"
Hole Dim:	9/16"

PRICE/ EACH	STD. PKG
31.38	25

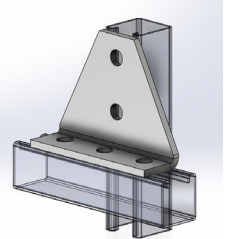
9038CA
5-hole shelf gusset
3-way angle
3-1/2" x 4-1/8"



Materials/ Finishes:	Zinc Plated (9038CAZ)
Thickness:	1/4"
Hole Dim:	9/16"

PRICE/ EACH	STD. PKG
37.66	10

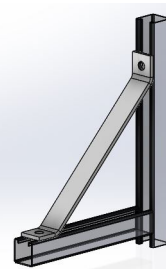
9039CA
5-hole shelf gusset angle
1-5/8" x 4-1/8"



Materials/ Finishes:	Zinc Plated (9039CAZ)
Thickness:	1/4"
Hole Dim:	9/16"

PRICE/ EACH	STD. PKG
49.68	10

9040CA
2-hole 45° knee brace 12"



Materials/ Finishes:	Zinc Plated (9040CAZ)
Thickness:	1/4"
Hole Dim:	9/16"

PRICE/ EACH	STD. PKG
98.23	15

9042CA
2-hole 45° knee brace 18"



Materials/ Finishes:	Zinc Plated (9042CAZ)
Thickness:	1/4"
Hole Dim:	9/16"

PRICE/ EACH	STD. PKG
49.60	BULK

9043CA
2-hole 45° knee brace 24"



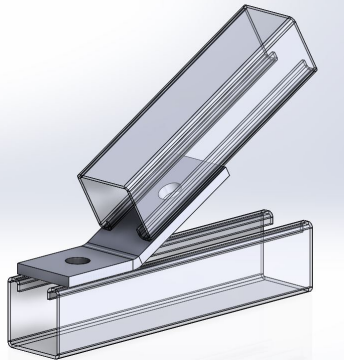
Materials/ Finishes:	Zinc Plated (9043CAZ)
	T-304 Stainless (9043CASS) POA
	T-316 Stainless (9043CASX) POA
Thickness:	1/4"
Hole Dim:	9/16"

PRICE/ EACH	STD. PKG
60.83	BULK

9044AF - 9048AF

angle fittings

9044AF
2-hole open angle 30°
2-3/8" x 3-1/8"



Materials/ Finishes:	Zinc Plated (9044AFZ)
Thickness:	1/4"
Hole Dim:	9/16"

PRICE/ EACH	STD. PKG
17.86	50

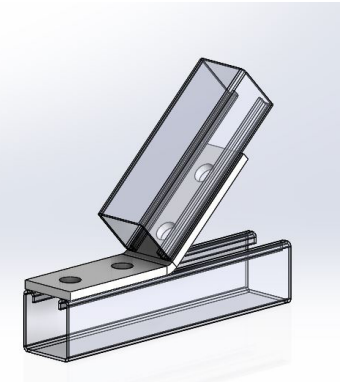
9045AF
2-hole open angle 45°
2-3/8" x 3-1/8"



Materials/ Finishes:	Zinc Plated (9045AFZ) T-304 Stainless (9045AFSS) POA T-316 Stainless (9045AFSX) POA
Thickness:	1/4"
Hole Dim:	9/16"

PRICE/ EACH	STD. PKG
13.87	50

9046AF
4-hole open angle 45°
3-1/2" x 3-11/16"



Materials/ Finishes:	Zinc Plated (9046AFZ) T-304 Stainless (9046AFSS) POA T-316 Stainless (9046AFSX) POA
Thickness:	1/4"
Hole Dim:	9/16"

PRICE/ EACH	STD. PKG
18.51	25

9047AF
2-hole closed angle 45°
2-1/2" x 3-1/2"



Materials/ Finishes:	Zinc Plated (9047AFZ)
Thickness:	1/4"
Hole Dim:	9/16"

PRICE/ EACH	STD. PKG
17.07	25

9048AF
4-hole closed angle 45°
4-3/8" x 5"



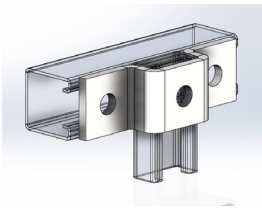
Materials/ Finishes:	Zinc Plated (9048AFZ)
Thickness:	1/4"
Hole Dim:	9/16"

PRICE/ EACH	STD. PKG
27.80	20

9049UF - 9057UF

"u" shaped fittings

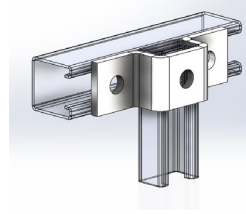
9049UF
3-hole "u" support for
1-5/8" x 13/16" strut



Materials/ Finishes:	Zinc Plated (9049UFZ)
Thickness:	1/4"
Hole Dim:	9/16"

PRICE/ EACH	STD. PKG
19.72	25

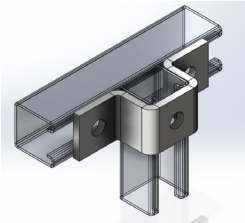
9050UF
3-hole "u" support for
1-5/8" x 1" strut



Materials/ Finishes:	Zinc Plated (9050UFZ)
Thickness:	1/4"
Hole Dim:	9/16"

PRICE/ EACH	STD. PKG
20.74	20

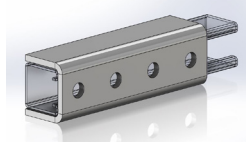
9051UF
3-hole "u" support for
1-5/8" x 1-3/8" strut



Materials/ Finishes:	Zinc Plated (9051UFZ)
Thickness:	1/4"
Hole Dim:	9/16"

PRICE/ EACH	STD. PKG
21.81	25

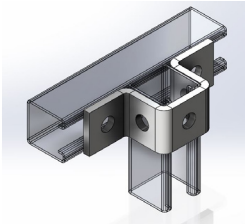
9052UF
4-hole splice clevis for
1-5/8" x 1-5/8" strut



Materials/ Finishes:	Zinc Plated (9052UFZ)
Thickness:	1/4"
Hole Dim:	9/16"

PRICE/ EACH	STD. PKG
52.53	10

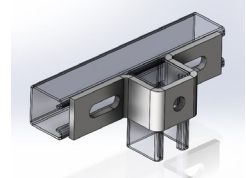
9053UF
5-hole "u" support for
1-5/8" x 1-5/8" strut



Materials/ Finishes:	Zinc Plated (9053UFZ)
Thickness:	1/4"
Hole Dim:	9/16"

PRICE/ EACH	STD. PKG
23.16	15

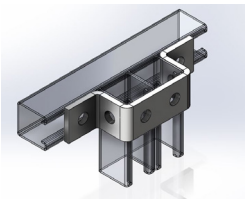
9054UF
adjustable 1-hole, 2-slot
"u" support for
1-5/8" x 1-5/8" strut



Materials/ Finishes:	Zinc Plated (9054UFZ)
Thickness:	1/4"
Hole Dim:	9/16"

PRICE/ EACH	STD. PKG
32.38	10

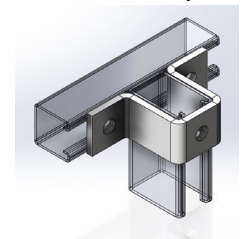
9055UF
6-hole "u" support for
1-5/8" double strut



Materials/ Finishes:	Zinc Plated (9055UFZ)
Thickness:	1/4"
Hole Dim:	9/16"

PRICE/ EACH	STD. PKG
29.10	10

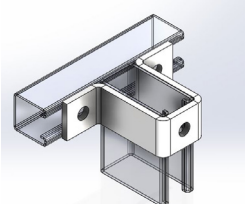
9056UF
3-hole "u" support for
1-5/8" x 2-7/16" strut



Materials/ Finishes:	Zinc Plated (9056UFZ)
Thickness:	1/4"
Hole Dim:	9/16"

PRICE/ EACH	STD. PKG
27.66	10

9057UF
3-hole "u" support for
1-5/8" x 3-1/4" strut



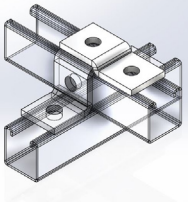
Materials/ Finishes:	Zinc Plated (9057UFZ)
Thickness:	1/4"
Hole Dim:	9/16"

PRICE/ EACH	STD. PKG
32.67	25

9058ZF - 9065ZF

“z” shaped fittings

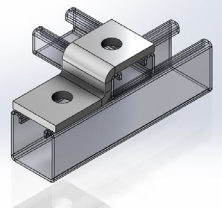
9058ZF
2-hole offset “z” support



Materials/ Finishes:	Zinc Plated (9058ZFZ)
Thickness:	1/4"
Hole Dim:	9/16"

PRICE/ EACH	STD. PKG
13.87	25

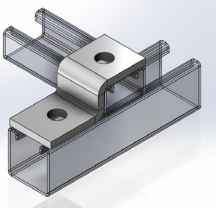
9059ZF
2-hole “z” support for
1-5/8" x 13/16" strut



Materials/ Finishes:	Zinc Plated (9059ZFZ)
Thickness:	1/4"
Hole Dim:	9/16"

PRICE/ EACH	STD. PKG
14.50	25

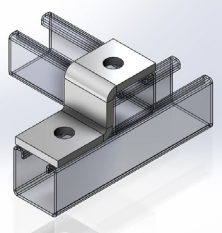
9060ZF
2-hole “z” support for
1-5/8" x 1" strut



Materials/ Finishes:	Zinc Plated (9060ZFZ)
Thickness:	1/4"
Hole Dim:	9/16"

PRICE/ EACH	STD. PKG
14.81	25

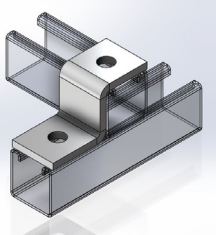
9061ZF
2-hole “z” support for
1-5/8" x 1-3/8" strut



Materials/ Finishes:	Zinc Plated (9061ZFZ)
Thickness:	1/4"
Hole Dim:	9/16"

PRICE/ EACH	STD. PKG
14.87	25

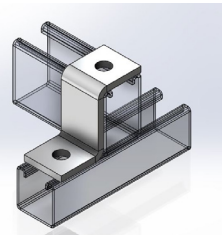
9062ZF
2-hole “z” support for
1-5/8" x 1-5/8" strut



Materials/ Finishes:	Zinc Plated (9062ZFZ)
Thickness:	1/4"
Hole Dim:	9/16"

PRICE/ EACH	STD. PKG
15.79	25

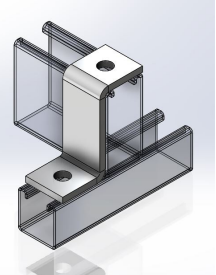
9063ZF
2-hole “z” support for
1-5/8" x 2-7/16" strut



Materials/ Finishes:	Zinc Plated (9063ZFZ)
Thickness:	1/4"
Hole Dim:	9/16"

PRICE/ EACH	STD. PKG
18.17	25

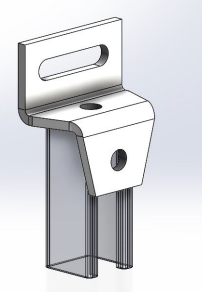
9064ZF
2-hole “z” support for
1-5/8" x 3-1/4" strut



Materials/ Finishes:	Zinc Plated (9064ZFZ)
Thickness:	1/4"
Hole Dim:	9/16"

PRICE/ EACH	STD. PKG
18.30	25

9065ZF
adjustable offset gusseted “z” support



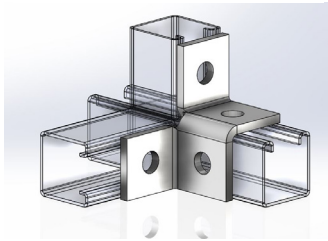
Materials/ Finishes:	Zinc Plated (9065ZFZ)
Thickness:	1/4"
Hole Dim:	9/16"

PRICE/ EACH	STD. PKG
31.09	20

9066WF - 9080WF

winged fittings

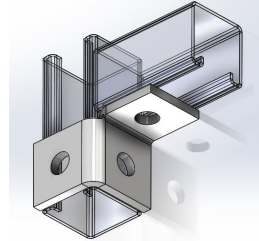
9066WF
4-hole double corner connection



Materials/ Finishes:	Zinc Plated (9066ZFZ)
Thickness:	1/4"
Hole Dim:	9/16"

PRICE/ EACH	STD. PKG
21.45	25

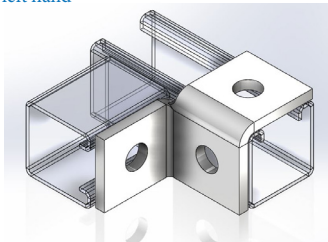
9067WF
2-hole single corner connection
right hand



Materials/ Finishes:	Zinc Plated (9067ZFZ)
Thickness:	1/4"
Hole Dim:	9/16"

PRICE/ EACH	STD. PKG
22.01	20

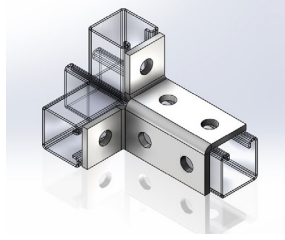
9068WF
2-hole single corner connection
left hand



Materials/ Finishes:	Zinc Plated (9068ZFZ)
Thickness:	1/4"
Hole Dim:	9/16"

PRICE/ EACH	STD. PKG
22.01	20

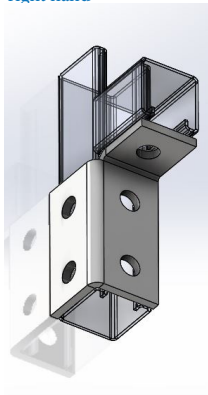
9069WF
6-hole double corner connection



Materials/ Finishes:	Zinc Plated (9069ZFZ)
Thickness:	1/4"
Hole Dim:	9/16"

PRICE/ EACH	STD. PKG
29.31	25

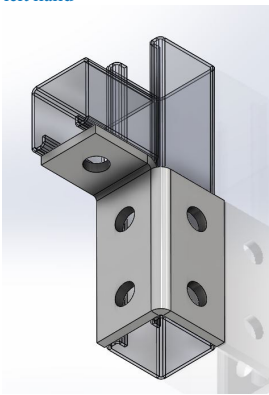
9070WF
5-hole single corner connection
right hand



Materials/ Finishes:	Zinc Plated (9070ZFZ)
Thickness:	1/4"
Hole Dim:	9/16"

PRICE/ EACH	STD. PKG
35.02	10

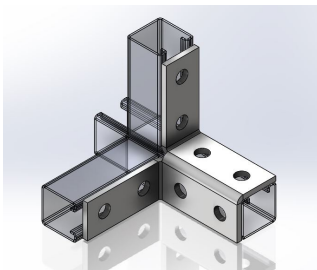
9071WF
5-hole single corner connection
left hand



Materials/ Finishes:	Zinc Plated (9071ZFZ)
Thickness:	1/4"
Hole Dim:	9/16"

PRICE/ EACH	STD. PKG
35.02	10

9072WF
8-hole double corner connection



Materials/ Finishes:	Zinc Plated (9072ZFZ)
Thickness:	1/4"
Hole Dim:	9/16"

PRICE/ EACH	STD. PKG
38.38	10

9073WF
6-hole single corner connection
right hand



Materials/ Finishes:	Zinc Plated (9073ZFZ)
Thickness:	1/4"
Hole Dim:	9/16"

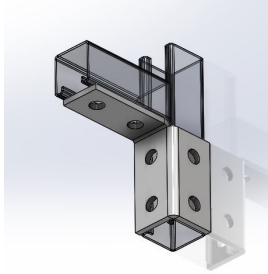
PRICE/ EACH	STD. PKG
39.24	10

9066WF - 9080WF

winged fittings (continued)

9074WF

6-hole single corner connection
left hand

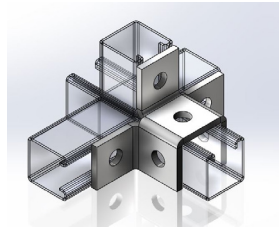


Materials/ Finishes:	Zinc Plated (9074ZFFZ)
Thickness:	1/4"
Hole Dim:	9/16"

PRICE/ EACH	STD. PKG
39.24	10

9075WF

6-hole triple wing connection

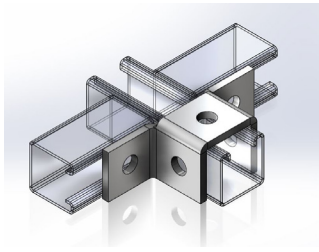


Materials/ Finishes:	Zinc Plated (9075ZFFZ)
Thickness:	1/4"
Hole Dim:	9/16"

PRICE/ EACH	STD. PKG
36.09	10

9076WF

5-hole double wing connection

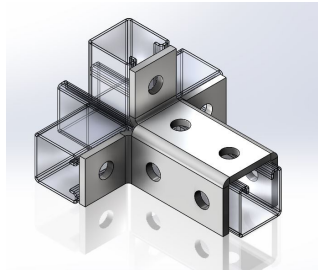


Materials/ Finishes:	Zinc Plated (9076ZFFZ)
Thickness:	1/4"
Hole Dim:	9/16"

PRICE/ EACH	STD. PKG
31.23	15

9077WF

9-hole triple wing connection

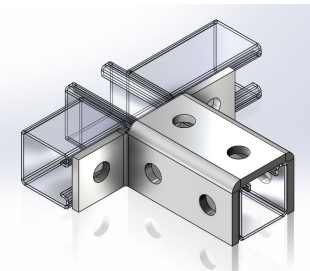


Materials/ Finishes:	Zinc Plated (9077ZFFZ)
Thickness:	1/4"
Hole Dim:	9/16"

PRICE/ EACH	STD. PKG
43.96	10

9078WF

8-hole double wing connection

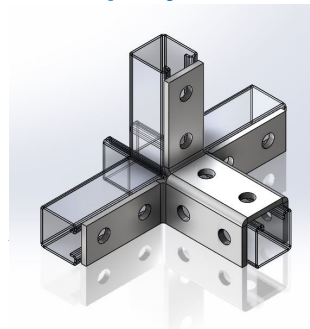


Materials/ Finishes:	Zinc Plated (9078ZFFZ)
Thickness:	1/4"
Hole Dim:	9/16"

PRICE/ EACH	STD. PKG
42.24	10

9079WF

12-hole triple wing connection

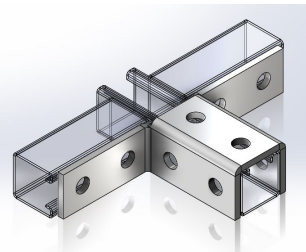


Materials/ Finishes:	Zinc Plated (9079ZFFZ)
Thickness:	1/4"
Hole Dim:	9/16"

PRICE/ EACH	STD. PKG
50.75	10

9080WF

10-hole double wing connection



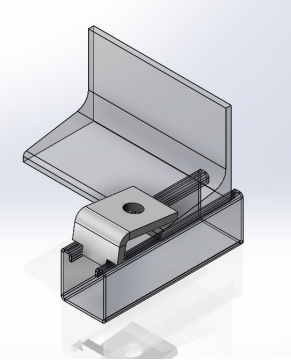
Materials/ Finishes:	Zinc Plated (9080ZFFZ)
Thickness:	1/4"
Hole Dim:	9/16"

PRICE/ EACH	STD. PKG
51.86	10

9081BC - 9087BC

beam clamps

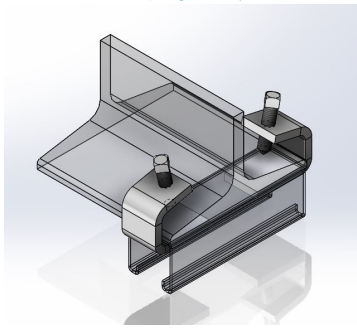
9081BC
strut beam clamp, notched



Materials/ Finishes:	Zinc Plated (9081BCZ)
Thickness:	1/4"
Hole Dim:	9/16"

PRICE/ EACH	STD. PKG
8.58	50

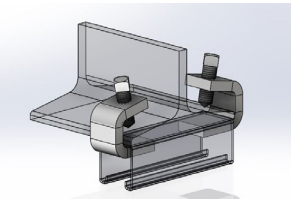
9082BC
strut beam clamp, light duty



Materials/ Finishes:	Zinc Plated (9082BCZ)
Thickness:	1/4"
Hole Dim:	9/16"

PRICE/ EACH	STD. PKG
18.22	50

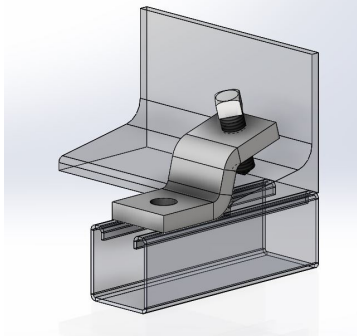
9083BC
strut beam clamp, heavy duty



Materials/ Finishes:	Zinc Plated (9083BCZ)
Thickness:	3/8"
Hole Dim:	9/16"

PRICE/ EACH	STD. PKG
23.66	25

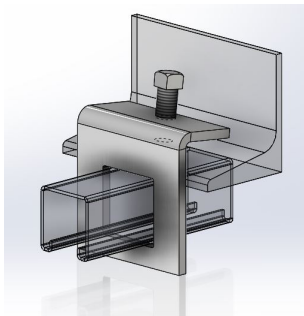
9084BC
strut "z" beam clamp, heavy duty



Materials/ Finishes:	Zinc Plated (9084BCZ)
Thickness:	1/4"
Hole Dim:	9/16"

PRICE/ EACH	STD. PKG
23.37	25

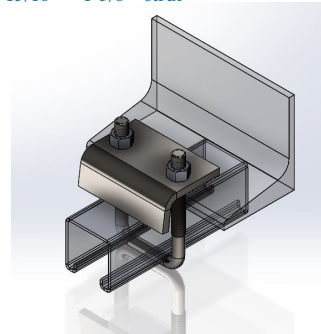
9085BC
strut beam clamp, window type
for 1-5/8" x 1-5/8" strut



Materials/ Finishes:	Zinc Plated (9085BCZ)
Thickness:	1/4"
Hole Dim:	9/16"

PRICE/ EACH	STD. PKG
23.79	25

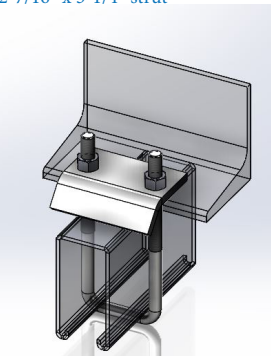
9086BC
strut u-bolt beam clamp for
13/16" - 1-5/8" strut



Materials/ Finishes:	Zinc Plated (9086BCZ) T-316 Stainless (9086BCSX) POA
Thickness:	1/4"
Hole Dim:	9/16"

PRICE/ EACH	STD. PKG
14.15	25

9087BC
strut u-bolt beam clamp for
2-7/16" x 3-1/4" strut

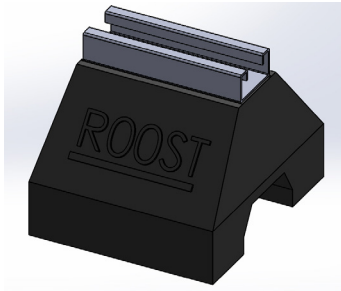


Materials/ Finishes:	Zinc Plated (9087BCZ) T-304 Stainless (9087BCSS) POA T-316 Stainless (9087BCSX) POA
Thickness:	1/4"
Hole Dim:	9/16"

PRICE/ EACH	STD. PKG
19.87	25

7505-RT

mini rooftop support block



Materials/ Finishes:	100% Recycled Rubber Base with 13/16" X 1-5/8" Pre-Galvanized Strut Channel (7505RT7200Z)
Variants:	100% Recycled Rubber Base Only (7505RT)
Approvals:	Complies with Manufacturer's Standardization Society (MSS) SP-58 (Type 62)
Weight (lbs):	3.20
Uniform Load Capacity (lbs):	250
Ordering:	Specify figure number.
Notes:	Uniform Load Capacity for the components in the 7505RT7200Z assembly only. Consult roofing manufacturer or engineer for roof loading compatability.

7505RT	7505RT7200Z	STD. PKG
35.30	47.65	1

7510-RT

rooftop support block

FIG. 7510RT7200Z



FIG. 7510RT7100Z



Materials/ Finishes:	100% Recycled Rubber Base with 13/16" X 1-5/8" Pre-Galvanized Strut Channel (7510RT7200Z)
Variants:	100% Recycled Rubber Base with 1-5/8" X 1-5/8" Pre-Galvanized Strut Channel (7510RT7100Z) 100% Recycled Rubber Base Only (7510RT)
Approvals:	Complies with Manufacturer's Standardization Society (MSS) SP-58 (Type 62)
Weight (lbs):	6.00
Uniform Load Capacity (lbs):	500
Ordering:	Specify figure number.
Notes:	Uniform Load Capacity for the components in the 7510RT7200Z and 7510RT7100Z assemblies only. Consult roofing manufacturer or engineer for roof loading compatability.

7510RT	7510RT7200Z	7510RT7100Z	STD. PKG
55.76	71.62	100.67	1

7510-RTE

rooftop support block w/ adjustable elevated strut



Materials/ Finishes:	100% Recycled Rubber Base with elevated (6"-12") 13/16" Pre-Galvanized Strut Channel (7510RTE7200Z1200)
Approvals:	N/A
Weight (lbs):	7.6
Uniform Load Capacity (lbs):	500
Ordering:	Specify figure number.
Notes:	Uniform Load Capacity for the components in the 7510RT7200Z1200 assembly only. Consult roofing manufacturer or engineer for roof loading compatability. Hardware is zinc plated.

PRICE/ EACH	STD. PKG
POA	1

7520-RT

rooftop support block 20" with 13/16" pre-galv. strut



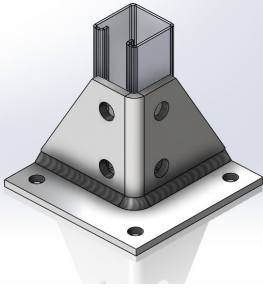
Materials/ Finishes:	100% Recycled Rubber Base with Pre-Galvanized Strut Channel (7520RT7200Z)
Weight (lbs):	12.00
Uniform Load Capacity (lbs):	1,000
Ordering:	Specify figure number.

PRICE/ EACH	STD. PKG
POA	1

9088PB - 9095PB

post bases

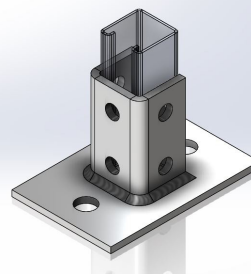
9088PB
post base for 1-5/8" x 1-5/8" strut



Materials/ Finishes:	Zinc Plated (9088PBZ)
Thickness:	1/4"
Hole Dim:	9/16"
Base Size:	5-1/8"

PRICE/ EACH	STD. PKG
91.27	5

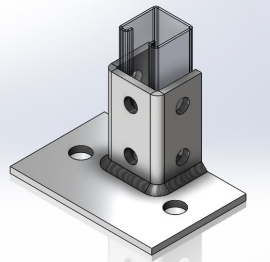
9089PB
post base for 1-5/8" x 1-5/8" strut



Materials/ Finishes:	Zinc Plated (9089PBZ)
Thickness:	1/4"
Hole Dim:	9/16"
Base Size:	4" x 6"

PRICE/ EACH	STD. PKG
67.47	5

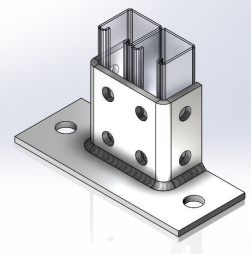
9090PB
post base - flush mount for
1-5/8" x 1-5/8" strut.



Materials/ Finishes:	Zinc Plated (9090PBZ)
	T-304 Stainless (9090PBSS) POA
	T-316 Stainless (9090PBSSX) POA
Thickness:	1/4"
Hole Dim:	9/16"
Base Size:	4" x 6"

ZINC PLATED	STD. PKG
42.75	10

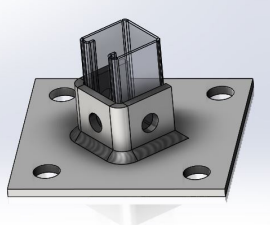
9091PB
post base for 1-5/8" x 3-1/4" strut



Materials/ Finishes:	Zinc Plated (9091PBZ)
Thickness:	1/4"
Hole Dim:	9/16"
Base Size:	4" x 7"

PRICE/ EACH	STD. PKG
173.55	5

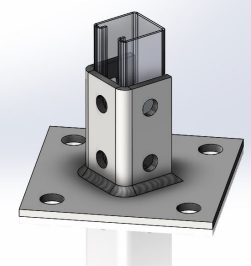
9092PB
post base - diagonal for
1-5/8" x 1-5/8" strut



Materials/ Finishes:	Zinc Plated (9092PBZ)
	T-304 Stainless (9092PBSS) POA
	T-316 Stainless (9092PBSSX) POA
Thickness:	1/4"
Hole Dim:	9/16"
Base Size:	6"

PRICE/ EACH	STD. PKG
66.44	10

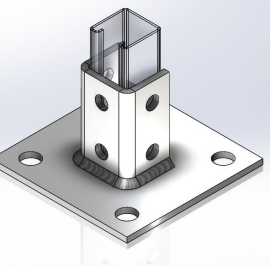
9093PB
post base - diagonal for
1-5/8" x 1-5/8" strut



Materials/ Finishes:	Zinc Plated (9093PBZ)
Thickness:	1/4"
Hole Dim:	9/16"
Base Size:	6"

PRICE/ EACH	STD. PKG
71.40	5

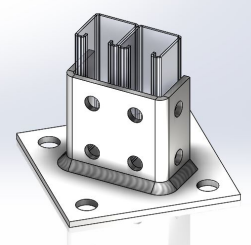
9094PB
post base - square for
1-5/8" x 1-5/8" strut



Materials/ Finishes:	Zinc Plated (9094PBZ)
	T-304 Stainless (9094PBSS) POA
	T-316 Stainless (9094PBSSX) POA
Thickness:	1/4"
Hole Dim:	9/16"
Base Size:	6"

ZINC PLATED	SS	SX	STD. PKG
71.40	291.82	355.72	5

9095PB
post base for
1-5/8" x 3-1/4" strut
6" x 6" base

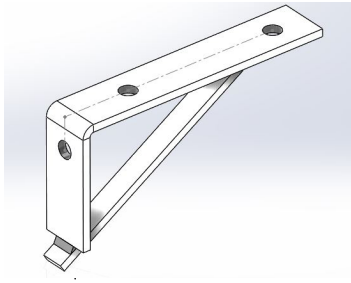


Materials/ Finishes:	Zinc Plated (9095PBZ)
Thickness:	1/4"
Hole Dim:	9/16"
Base Size:	6"

PRICE/ EACH	STD. PKG
85.99	5

9103BB - 9109BB brackets

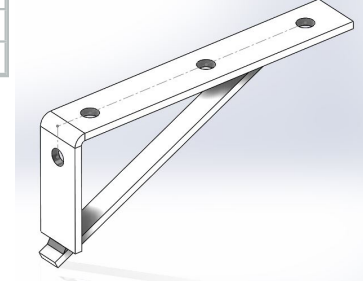
9103BB
heavy duty bracket 8-1/2"



Materials/ Finishes:	Zinc Plated (9103BBZ)
Thickness:	1/4"
Hole Dim:	9/16"

PRICE/ EACH	STD. PKG
81.53	BULK

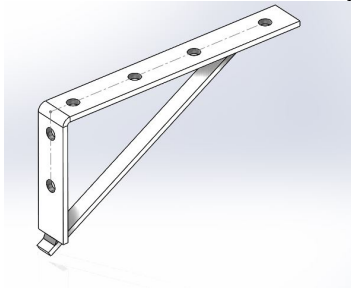
9104BB
heavy duty bracket 10-1/2"



Materials/ Finishes:	Zinc Plated (9104BBZ)
Thickness:	1/4"
Hole Dim:	9/16"

PRICE/ EACH	STD. PKG
84.25	BULK

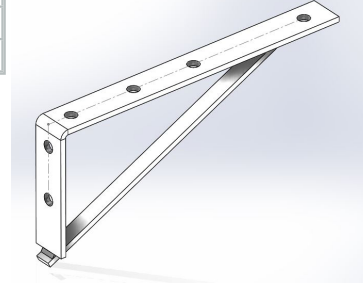
9105BB
heavy duty bracket 12-1/2"



Materials/ Finishes:	Zinc Plated (9105BBZ)
Thickness:	1/4"
Hole Dim:	9/16"

PRICE/ EACH	STD. PKG
94.63	BULK

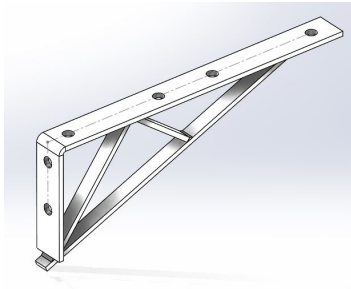
9106BB
heavy duty bracket 14-1/2"



Materials/ Finishes:	Zinc Plated (9106BBZ)
Thickness:	1/4"
Hole Dim:	9/16"

PRICE/ EACH	STD. PKG
99.33	BULK

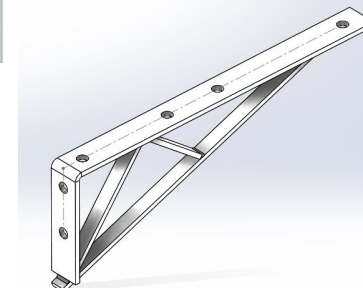
9107BB
heavy duty shelf bracket 16-1/2"



Materials/ Finishes:	Zinc Plated (9107BBZ)
Thickness:	1/4"
Hole Dim:	9/16"

PRICE/ EACH	STD. PKG
137.32	BULK

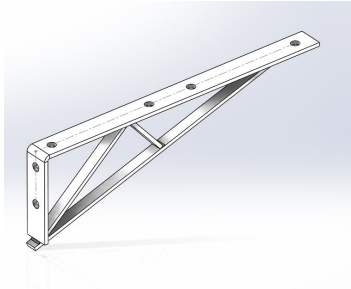
9108BB
heavy duty shelf bracket 18-1/2"



Materials/ Finishes:	Zinc Plated (9108BBZ)
Thickness:	1/4"
Hole Dim:	9/16"

PRICE/ EACH	STD. PKG
144.86	BULK

9109BB
heavy duty shelf bracket 20-1/2"

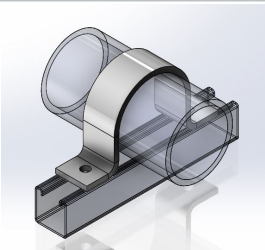


Materials/ Finishes:	Zinc Plated (9109BBZ)
Thickness:	1/4"
Hole Dim:	9/16"

PRICE/ EACH	STD. PKG
152.41	BULK

9110HD

two hole hold down strap

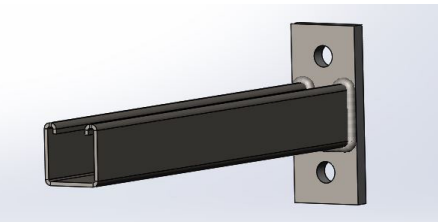


Materials/ Finishes	Zinc Plated (9110HDZ)	
	T-304 Stainless (9110HDSS)	T-316 Stainless (9110HDSX)
Service:	Designed to steady a horizontal run of pipe against a perpendicular section of strut.	
Ordering:	Specify figure number, finish and pipe size.	

PIPE SIZE	ZINC PLATED	SS/SX
1/2	7.54	POA
3/4	7.86	
1	8.37	
1-1/4	8.83	
1-1/2	9.22	
2	18.49	
2-1/2	19.33	
3	22.15	
3-1/2	25.06	
4	27.12	
5	34.47	
6	46.85	
8	POA	
10		
12		

9200

single channel reversible bracket

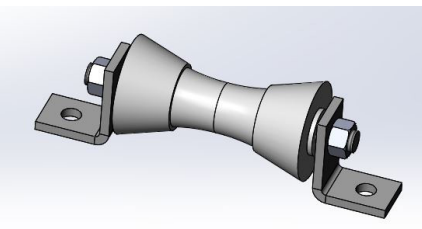


Materials/ Finishes	Zinc Plated (9200Z)
Ordering:	Specify figure number, finish and length.

SIZE	ZINC PLATED
6	POA
12	
15	
18	
24	
30	
36	

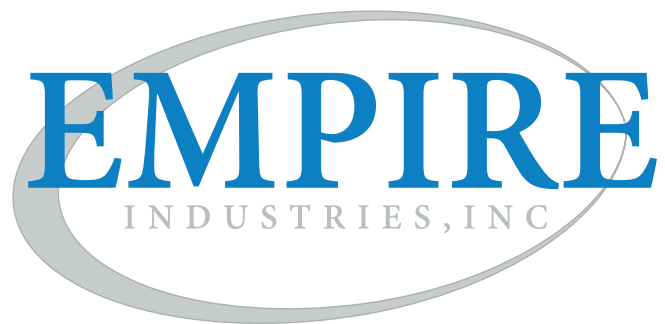
9650

strut roller support



Materials/ Finishes	Zinc Plated (9650Z)	T-304 Stainless (9650SS)
	T-316 Stainless (9650SX)	
Ordering:	Specify figure number, finish and pipe OD.	
Notes:	Roll is cast iron.	

PIPE OD	ZINC PLATED/ SS/SX
2	POA
2-1/2	
3	
3-1/2	
4	
5	
6	
8	
10	
12	
14	
16	
18	
20	



180 OLCOTT STREET • MANCHESTER, CT 06040
TELEPHONE: (860) 647-1431 • USA: 1-800-243-4844
FAX: (860) 647-1160
ORDERS: ORDERS@EMPIREINDUSTRIES.COM
QUOTES: QUOTES@EMPIREINDUSTRIES.COM
EMPIREINDUSTRIES.COM