

## DRIVE TYPE

EXCEEDS 72 HR SALT SPRAY.  
8,000 PSI MAX PRESSURE.

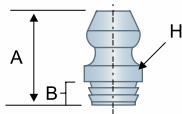
Drive type fittings with longer shanks provide increased grip in heavy-duty applications. The 1952-A has a short shank for installation into sheet metal or other thin-walled materials. Ideally, technicians should orient the angled fittings prior to installation.

FOR MORE INFORMATION,  
PLEASE SEE PG. 30-31

TECHNICAL DRAWINGS ARE APPROXIMATE ACTUAL SIZE

### 1952-A

Straight Drive Type  
≈ 1/4" Drill Size  
Short Shank

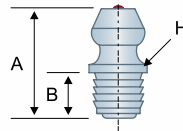


GM 271432

NO BALL CHECK

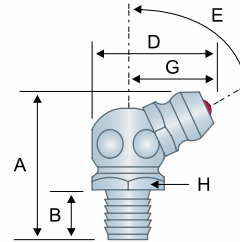
### 1743-B

Straight Drive Type  
≈ 1/4" Drill Size  
Long Shank



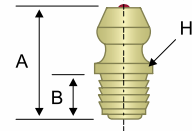
### 1744-B1

65° Angle Drive Type  
≈ 1/4" Drill Size  
Long Shank



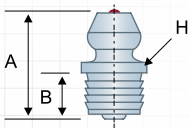
### 369577

Straight Drive Type  
≈ 1/4" Drill Size  
Long Shank



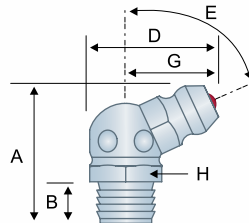
### 1608-B

Straight Drive Type  
≈ 5/16" Drill Size  
Standard Shank



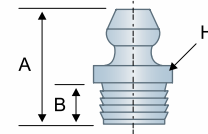
### 1630-B1

65° Angle Drive Type  
≈ 5/16" Drill Size  
Standard Shank



### 1666

Straight Drive Type  
≈ 3/8" Drill Size  
Standard Shank



NO BALL CHECK

ALEMITE Item #	HUYETT Order #	Drill Diameter	Angle (E)	Overall Length (A)	Shank Length (B)	Overall Width (D)	Swing Clearance (G)	Shoulder Diameter (H)	Ball Check?
1952-A	* A1952	≈ 1/4" Drill	Straight	.47"	.13"	—	—	11/32"	No
1743-B	* A1743	≈ 1/4" Drill	Straight	.55"	.25"	—	—	5/16"	Yes
1744-B1	A1744	≈ 1/4" Drill	65°	.77"	.28"	.67"	.48"	3/8" Hex	Yes
369577	A369577	≈ 1/4" Drill	Straight	.55"	.25"	—	—	11/32"	Yes
1608-B	* A1608	≈ 5/16" Drill	Straight	.55"	.25"	—	—	3/8"	Yes
1630-B1	A1630	≈ 5/16" Drill	65°	.70"	.22"	.67"	.48"	3/8" Hex	Yes
1666	A1666	≈ 3/8" Drill	Straight	.58"	.22"	—	—	7/16"	No

\* Common Parts  
Parts with this designation  
are in wide distribution.

GM General Motors®  
General Motors® is a registered trademark  
of General Motors Corp., Detroit, MI.

GM/CH General Motors®/CH  
General Motors® is a registered trademark  
of General Motors Corp., Detroit, MI.

F Ford®  
Ford® is a registered trademark  
of Ford Motor Company.

IH Case IH®  
Case IH® is a registered trademark  
of CNH America LLC, Racine, WI.

Prices, materials, dimensions, tolerances, designs and grades subject to change without notice. © Huyett 2022

Alemite® is a registered trademark of SKF Group Headquarters.

REVISED 05-22