

SHAFT COLLARS

HUYETT.COM • 785-392-3017

BOX 232 • MINNEAPOLIS, KS • 67467
SALES@HUYETT.COM • FAX 785-392-2845

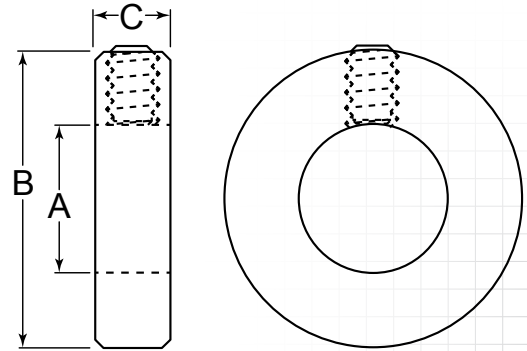
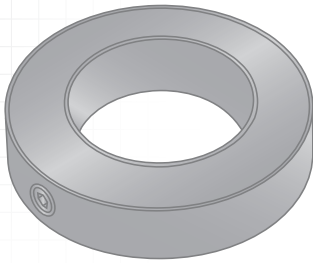
SET – IMPERIAL

DESCRIPTION

Set collars are used in machine applications for securing components on shafts. They can be used for stroke limitations, positioning, or as mechanical stops. Because the set screw must penetrate the shaft, set collars are used only on unhardened shafts and when frequent adjustment is not a consideration.

HOW TO IDENTIFY

1. Verify solid style with set screw.
2. Measure bore (A).
3. Build the part number from the chart on the next page.



PREFIX MATERIAL/FINISH

SC-#### = CARBON STEEL, PLAIN*
 SC-####-AL = ALUMINUM, PLAIN
 SC-####-BO = CARBON STEEL, BLACK OXIDE
 SC-####-NY = NYLON, PLAIN

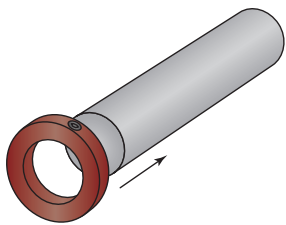
SC-####-SS = STAINLESS STEEL, PLAIN
 SC-####-ZC = CARBON STEEL, ZINC CLEAR

BORE (A) TOLERANCES

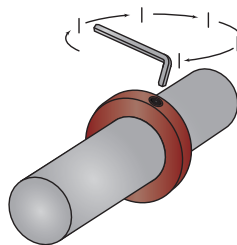
(Size Range)	(Tolerance)
.1250 – .1875"	+ .0008/+ .0030"
.2500 – 1.1250"	+ .0008/+ .0040"
1.1875 – 2.9375"	+ .0008/+ .0060"
3.0000 – 6.0000"	+ .0008/+ .0080"

ADDITIONAL SIZES AND FINISHES MAY
BE AVAILABLE UPON REQUEST

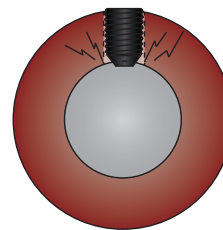
INSTALLING A SET COLLAR



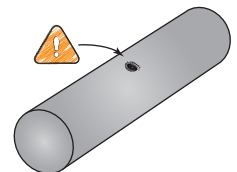
SLIDE THE COLLAR AXIALLY
ONTO THE SHAFT



SET IN PLACE BY TIGHTENING
THE SET SCREW



THE SET SCREW WILL
PENETRATE THE SHAFT
SURFACE...



MARRING THE SHAFT
SURFACE

FOR DETAILED SPECIFICATIONS AND TOLERANCES, VISIT HUYETT.COM.
 Prices, materials, dimensions, tolerances, designs, and grades subject to change without notice. © 2016 G.L. Huyett
 *Limited warranty for surface finish: 30 days from date of shipment. See page 12 for details.



SHAFT COLLARS

HUYETT.COM • 785-392-3017

SET - IMPERIAL

ZINC PLATING AND OTHER FINISHES AVAILABLE FOR ALL PARTS
SEE PAGE 16

HOW TO BUILD A PART NUMBER

SC-Ø125

LEAVE BLANK FOR CARBON STEEL, PLAIN*
OR SELECT MATERIAL AND FINISH FROM THE LIST BELOW

ITEM PREFIX

(A)
BORE

MATERIAL SUFFIX

SC-

Ø125

TO ORDER ADD YOUR STYLE,

CHOOSE YOUR BORE,

CHOOSE YOUR MATERIAL.

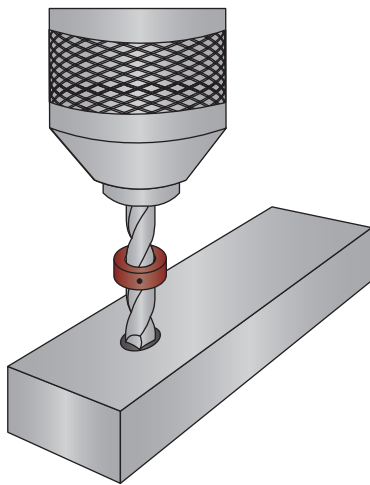
CODE	STYLE
SC-	Set Collar

CODE	BORE
0125	.1250" (1/8)
0187	.1875" (3/16)
0250	.2500" (1/4)
0312	.3125" (5/16)
0375	.3750" (3/8)
0437	.4375" (7/16)
0500	.5000" (1/2)
0562	.5625" (9/16)
0625	.6250" (5/8)
0687	.6875" (11/16)
0750	.7500" (3/4)
0812	.8125" (13/16)
0875	.8750" (7/8)
0937	.9375" (15/16)
1000	1.0000" (1)
1062	1.0625" (1-1/16)
1125	1.1250" (1-1/8)
1187	1.1875" (1-3/16)
1250	1.2500" (1-1/4)
1312	1.3125" (1-5/16)
1375	1.3750" (1-3/8)
1437	1.4375" (1-7/16)
1500	1.5000" (1-1/2)
1562	1.5625" (1-9/16)
1625	1.6250" (1-5/8)
1687	1.6875" (1-11/16)
1750	1.7500" (1-3/4)
1812	1.8125" (1-13/16)
1875	1.8750" (1-7/8)
1937	1.9375" (1-15/16)
2000	2.0000" (2)
2062	2.0625" (2-1/16)
2125	2.1250" (2-1/8)

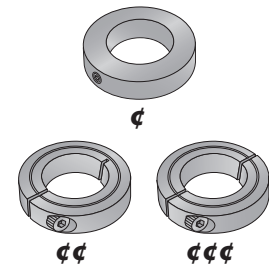
CODE	BORE
2187	2.1875" (2-3/16)
2250	2.2500" (2-1/4)
2312	2.3125" (2-5/16)
2375	2.3750" (2-3/8)
2437	2.4375" (2-7/16)
2500	2.5000" (2-1/2)
2562	2.5625" (2-9/16)
2625	2.6250" (2-5/8)
2687	2.6875" (2-11/16)
2750	2.7500" (2-3/4)
2812	2.8125" (2-13/16)
2875	2.8750" (2-7/8)
2937	2.9375" (2-15/16)
3000	3.0000" (3)
3062	3.0625" (3-1/16)
3125	3.1250" (3-1/8)
3187	3.1875" (3-3/16)
3250	3.2500" (3-1/4)
3312	3.3125" (3-5/16)
3375	3.3750" (3-3/8)
3437	3.4375" (3-7/16)
3500	3.5000" (3-1/2)
3562	3.5625" (3-9/16)
3625	3.6250" (3-5/8)
3687	3.6875" (3-11/16)
3750	3.7500" (3-3/4)
3812	3.8125" (3-13/16)
3875	3.8750" (3-7/8)
3937	3.9375" (3-15/16)
4000	4.0000" (4)
4437	4.4375" (4-7/16)
4937	4.9375" (4-15/16)

CODE	MATERIAL/FINISH
(blank)	Carbon Steel, Plain*
-AL	Aluminum, Plain
-BO	Carbon Steel, Black Oxide
-NY	Nylon, Plain
-SS	Stainless Steel, Plain
-ZC	Carbon Steel, Zinc Clear

DON'T SEE WHAT YOU'RE LOOKING FOR? CONTACT SALES@HUYETT.COM OR CALL 785-392-3017



USED AS A STOP ON A DRILL BIT TO CONTROL THE DEPTH OF THE DRILLED HOLE



SET COLLARS PROVIDE A LOW COST SOLUTION FOR MANY POWER TRANSMISSION APPLICATIONS

BLACK OXIDE



Black oxide provides excellent corrosion resistance for indoor environments, but is not intended for use in outdoor applications.

FOR DETAILED SPECIFICATIONS AND TOLERANCES, VISIT HUYETT.COM.

Prices, materials, dimensions, tolerances, designs, and grades subject to change without notice. © 2016 G.L. Huyett

*Limited warranty for surface finish: 30 days from date of shipment. See page 12 for details.