

# SHAFT COLLARS

HUYETT.COM • 785-392-3017

BOX 232 • MINNEAPOLIS, KS • 67467

SALES@HUYETT.COM • FAX 785-392-2845

## SPLIT – IMPERIAL

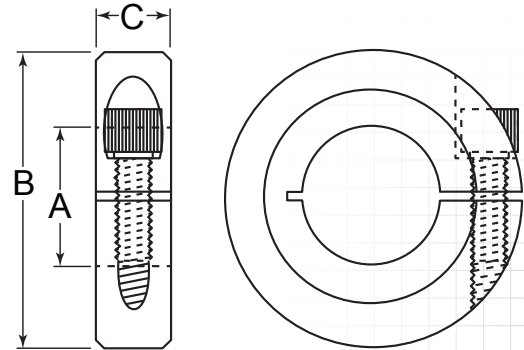
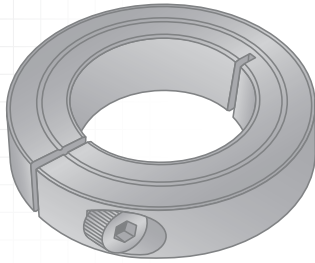
### DESCRIPTION

Split collars provide greater clamping force than set collars by squeezing the shaft rather than penetrating it with a set screw. Double-split collars provide more clamping force than single-split collars and have the added feature of being able to be installed radially and clamp from both sides.

### HOW TO IDENTIFY

1. Verify single- or double-split style.
2. Measure bore (A).
3. Build the part number from the chart on the next page.

### SINGLE-SPLIT

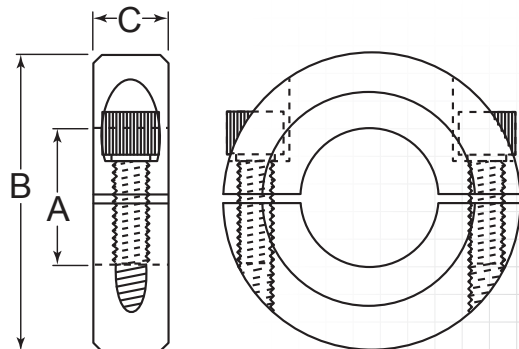
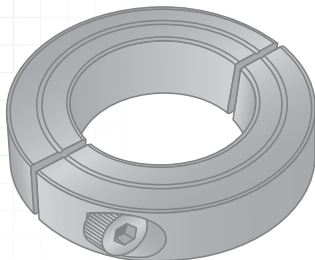


### PREFIX MATERIAL/FINISH

- SC1-####-AL = ALUMINUM, PLAIN  
 SC1-####-BO = CARBON STEEL, BLACK OXIDE  
 SC1-####-NY = NYLON, PLAIN  
 SC1-####-SS = STAINLESS STEEL, PLAIN

ADDITIONAL SIZES AND FINISHES MAY BE AVAILABLE UPON REQUEST

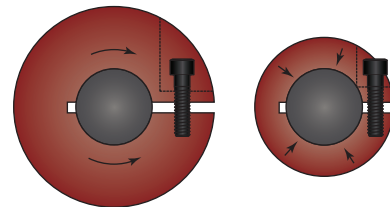
### DOUBLE-SPLIT



### PREFIX MATERIAL/FINISH

- SC2-####-AL = ALUMINUM, PLAIN  
 SC2-####-BO = CARBON STEEL, BLACK OXIDE  
 SC2-####-NY = NYLON, PLAIN  
 SC2-####-SS = STAINLESS STEEL, PLAIN

### FACT AND FRICTION



A thicker collar is not necessarily a stronger collar. The same size cap screw in a thicker collar will expend more energy bending the collar before it actually applies clamping force.

### BORE (A) TOLERANCES

(Size Range)	(Tolerance)
Single-split & Double-split	
.1250 – .1875"	+0.0006/+0.0030"
.2500 – 1.1250"	+0.0008/+0.0040"
1.1875 – 2.9375"	+0.0008/+0.0060"
3.0000 – 6.0000"	+0.0008/+0.0080"

FOR DETAILED SPECIFICATIONS AND TOLERANCES, VISIT HUYETT.COM.  
 Prices, materials, dimensions, tolerances, designs, and grades subject to change without notice. © 2016 G.L. Huyett

## SPLIT - IMPERIAL

ZINC PLATING AND OTHER FINISHES AVAILABLE FOR ALL PARTS  
SEE PAGE 16

### HOW TO BUILD A PART NUMBER

## SC2-1937-AL

ITEM PREFIX

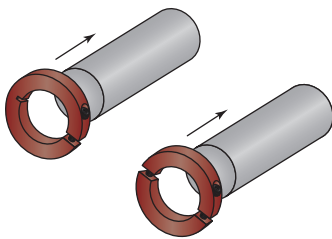
(A)  
BORE

MATERIAL SUFFIX

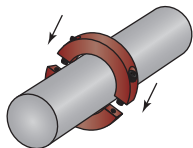
**SC2-**

TO ORDER CHOOSE YOUR STYLE,

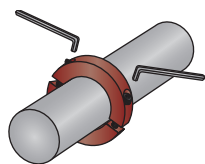
CODE	STYLE
SC1-	Single-split Collar
SC2-	Double-split Collar



SINGLE- AND DOUBLE-SPLIT COLLARS ARE INSTALLED AXIALLY



DOUBLE-SPLIT COLLARS CAN ALSO BE INSTALLED RADIALLY



WHEN POSITIONED, TIGHTEN CAP SCREWS TO LOCK IN PLACE

1/8" to 4-15/16"

**1937**

CHOOSE YOUR BORE,

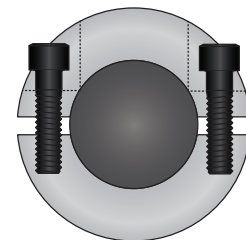
CODE	BORE
0125	.1250" (1/8)
0187	.1875" (3/16)
0250	.2500" (1/4)
0312	.3125" (5/16)
0375	.3750" (3/8)
0437	.4375" (7/16)
0500	.5000" (1/2)
0562	.5625" (9/16)
0625	.6250" (5/8)
0687	.6875" (11/16)
0750	.7500" (3/4)
0812	.8125" (13/16)
0875	.8750" (7/8)
0937	.9375" (15/16)
1000	1.0000" (1)
1062	1.0625" (1-1/16)
1125	1.1250" (1-1/8)
1187	1.1875" (1-3/16)
1250	1.2500" (1-1/4)
1312	1.3125" (1-5/16)
1375	1.3750" (1-3/8)
1437	1.4375" (1-7/16)
1500	1.5000" (1-1/2)
1562	1.5625" (1-9/16)
1625	1.6250" (1-5/8)
1687	1.6875" (1-11/16)
1750	1.7500" (1-3/4)
1812	1.8125" (1-13/16)
1875	1.8750" (1-7/8)
1937	1.9375" (1-15/16)

CODE	BORE
2000	2.0000" (2)
2062	2.0625" (2-1/16)
2125	2.1250" (2-1/8)
2187	2.1875" (2-3/16)
2250	2.2500" (2-1/4)
2312	2.3125" (2-5/16)
2375	2.3750" (2-3/8)
2437	2.4375" (2-7/16)
2500	2.5000" (2-1/2)
2562	2.5625" (2-9/16)
2625	2.6250" (2-5/8)
2687	2.6875" (2-11/16)
2750	2.7500" (2-3/4)
2812	2.8125" (2-13/16)
2875	2.8750" (2-7/8)
2937	2.9375" (2-15/16)
3000	3.0000" (3)
3187	3.1875" (3-3/16)
3250	3.2500" (3-1/4)
3437	3.4375" (3-7/16)
3500	3.5000" (3-1/2)
3562	3.5625" (3-9/16)
3687	3.6875" (3-11/16)
3750	3.7500" (3-3/4)
3812	3.8125" (3-13/16)
3875	3.8750" (3-7/8)
3937	3.9375" (3-15/16)
4000	4.0000" (4)
4437	4.4375" (4-7/16)
4937	4.9375" (4-15/16)

**-AL**

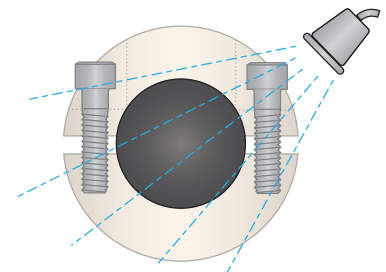
CHOOSE YOUR MATERIAL.

CODE	MATERIAL/FINISH
-AL	Aluminum, Plain
-BO	Carbon Steel, Black Oxide
-NY	Nylon, Plain
-SS	Stainless Steel, Plain



#### TORQUE AND BALANCE

With a cap screw on each side, all of the torque from each screw is applied to the clamping force. Additionally, the two screws will balance each other in high rpm applications.



#### CLEAN UP

Nylon shaft collars with stainless steel cap screws tolerate frequent wash ups. They are perfect for food processing and pharmaceutical applications.

DON'T SEE WHAT YOU'RE LOOKING FOR?  
CONTACT SALES@HUYETT.COM  
OR CALL 785-392-3017

FOR DETAILED SPECIFICATIONS AND TOLERANCES, VISIT HUYETT.COM.

Prices, materials, dimensions, tolerances, designs, and grades subject to change without notice. © 2016 G.L. Huyett

\*Limited warranty for surface finish: 30 days from date of shipment. See page 12 for details.