

# SHAFT COLLARS

HUYETT.COM • 785-392-3017

BOX 232 • MINNEAPOLIS, KS • 67467  
SALES@HUYETT.COM • FAX 785-392-2845

## THREADED

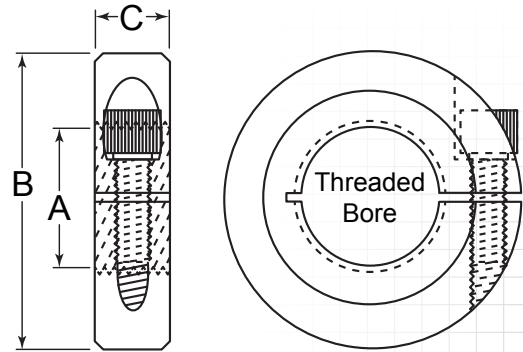
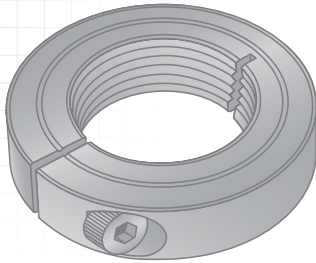
### DESCRIPTION

Threaded bore shaft collars are useful in applications that require precise positioning or where high axial loads are encountered. The collar can be twisted on the shaft to an exact location and tightened without damaging shaft threads. The shaft threads also act as a positive mechanical stop preventing lateral movement.

### HOW TO IDENTIFY

1. Verify threaded bore, thread style, and collar type.
2. Determine thread size (A).
3. Build the part number from the chart on the next page.

#### SINGLE-SPLIT



### PREFIX MATERIAL/FINISH

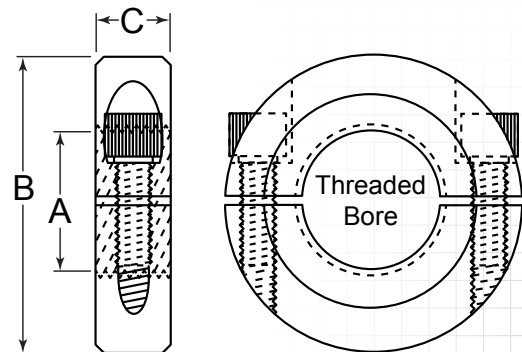
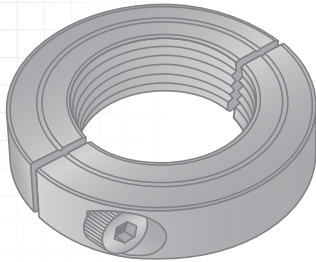
#### SINGLE-SPLIT, COARSE THREAD

- SCC1-####-BO = Carbon Steel, Black Oxide
- SCC1-####-SS = Stainless Steel, Plain

#### SINGLE-SPLIT, FINE THREAD

- SCF1-####-BO = Carbon Steel, Black Oxide
  - SCF1-####-SS = Stainless Steel, Plain
- Material/finish combinations may not be available in all sizes.

#### DOUBLE-SPLIT



### PREFIX MATERIAL/FINISH

#### DOUBLE-SPLIT, COARSE THREAD

- SCC2-####-BO = Carbon Steel, Black Oxide
- ScC2-####-SS = Stainless Steel, Plain

#### DOUBLE-SPLIT, FINE THREAD

- SCF2-####-BO = Carbon Steel, Black Oxide
  - ScF2-####-SS = Stainless Steel, Plain
- Material/finish combinations may not be available in all sizes.



# SHAFT COLLARS

HUYETT.COM • 785-392-3017

## THREADED

ZINC PLATING AND OTHER FINISHES AVAILABLE FOR ALL PARTS  
SEE PAGE 16

### HOW TO BUILD A PART NUMBER

**SCC2-1125-BO**

ITEM PREFIX

**SCC2-**

TO ORDER CHOOSE YOUR STYLE,

| CODE  | STYLE                              |
|-------|------------------------------------|
| SCC1- | Single-split Collar, Coarse Thread |
| SCC2- | Double-split Collar, Coarse Thread |

(A)  
THREAD SIZE

**1125**

CHOOSE YOUR BORE,

| CODE | THREAD SIZE | CODE | THREAD SIZE |
|------|-------------|------|-------------|
| 0010 | #10-24      | 0750 | 3/4"-10     |
| 0250 | 1/4"-20     | 0875 | 7/8"-9      |
| 0312 | 5/16"-18    | 1000 | 1"-8        |
| 0375 | 3/8"-16     | 1125 | 1-1/8"-7    |
| 0437 | 7/16"-14    | 1250 | 1-1/4"-7    |
| 0500 | 1/2"-13     | 1375 | 1-3/8"-6    |
| 0625 | 5/8"-11     | 1500 | 1-1/2"-6    |

MATERIAL SUFFIX

**-BO**

CHOOSE YOUR MATERIAL.

| CODE | MATERIAL/FINISH           |
|------|---------------------------|
| -BO  | Carbon Steel, Black Oxide |
| -SS  | Stainless Steel, Plain    |

**SCF1-Ø312-SS**

ITEM PREFIX

**SCF1-**

TO ORDER CHOOSE YOUR STYLE,

| CODE  | STYLE                            |
|-------|----------------------------------|
| SCF1- | Single-split Collar, Fine Thread |
| SCF2- | Double-split Collar, Fine Thread |

(A)  
THREAD SIZE

**Ø312**

CHOOSE YOUR BORE,

| CODE   | THREAD SIZE | CODE   | THREAD SIZE |
|--------|-------------|--------|-------------|
| 0008   | #8-32       | 100014 | 1"-14       |
| 0010   | #10-32      | 1125   | 1-1/8"-12   |
| 0250   | 1/4"-28     | 1250   | 1-1/4"-12   |
| 0312   | 5/16"-24    | 1375   | 1-3/8"-12   |
| 0375   | 3/8"-24     | 1500   | 1-1/4"-12   |
| 0437   | 7/16"-20    | 1750   | 1-3/4"-16   |
| 0500   | 1/2"-20     | 2000   | 2"-12       |
| 0625   | 5/8"-18     | 2250   | 2-1/4"-12   |
| 0750   | 3/4"-16     |        |             |
| 0875   | 7/8"-14     |        |             |
| 100012 | 1"-12       |        |             |

MATERIAL SUFFIX

**-SS**

CHOOSE YOUR MATERIAL.

| CODE | MATERIAL/FINISH           |
|------|---------------------------|
| -BO  | Carbon Steel, Black Oxide |
| -SS  | Stainless Steel, Plain    |

DON'T SEE WHAT YOU'RE LOOKING FOR? CONTACT SALES@HUYETT.COM OR CALL 785-392-3017