

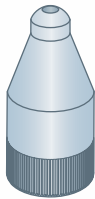
COUPLERS

FLUSH & PIN TYPE

The pin type grease fitting coupler is designed to engage with a pin type grease fitting. The angled slots fit around the pins of the fitting to provide a quick, secure and leak-proof connection for proper lubrication servicing. The Z737, 314150 and B411 are designed for servicing flush type grease fittings.

Z737

Flush Type Coupler
1/8"-27 NPTF



FOR HAND EQUIPMENT

314150

Flush Type Coupler - Midget for 1877
1/8"-27 NPTF

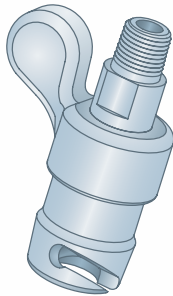


FOR HAND EQUIPMENT



50491

Pin Type Coupler - Male with Wing
1/8"-27 NPTF
10,000 psi

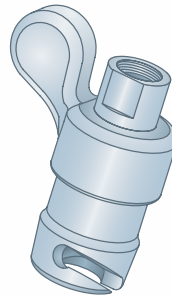


10,000 PSI

FOR HAND EQUIPMENT

51185

Pin Type Coupler - Female with Wing
1/8"-27 NPTF
10,000 psi

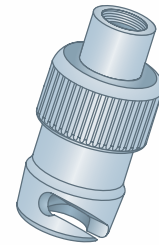


10,000 PSI

FOR HAND EQUIPMENT

VB942

Pin Type Coupler - Female
1/8"-27 NPTF
10,000 psi



10,000 PSI

FOR HAND EQUIPMENT

ALEMITE Item #	HUYETT Order #	Description	Equipment Type	Thread	Overall Length	Tip Diameter	Working Pressure
Z737	AZ737	Coupler - Flush Type Female	Hand	1/8"-27 NPTF	1.25"	.213"	—
314150	A314150	Coupler - Midget Flush Type Female	Hand	1/8"-27 NPTF	1.0"	.08"	—
50491	A50491	Coupler - Pin Type Male with Wing	Hand	1/8"-27 NPTF	—	—	10,000 psi
51185	A51185	Coupler - Pin Type Female with Wing	Hand	1/8"-27 NPTF	—	—	10,000 psi
VB942	AVB942	Coupler - Pin Type Female	Hand	1/8"-27 NPTF	—	—	10,000 psi