



ASME B18.8.2

STANDARD – IMPERIAL ALLOY

DESCRIPTION

A cylindrical solid pin with a chamfered end for easy insertion. Dowel pins are commonly used to retain parts in a fixed position or to preserve alignment.

HOW TO IDENTIFY

1. Verify solid pin with chamfered end design.
2. Measure diameter (A).
3. Measure length (C).
4. Find the part in the chart below.



PREFIX MATERIAL/FINISH

DOW = ALLOY STEEL, FLAIN*
DOWBO = ALLOY STEEL, BLACK OXIDE
 Material/finish combinations may not be available in all sizes.

ADDITIONAL SIZES AND FINISHES MAY BE AVAILABLE UPON REQUEST

ITEM NUMBER	(C) OVERALL LENGTH +.010/- .010"
-------------	--

1/64 (.0156")

(A) Outside Diameter: +.0003/+ .0001"

PREFIX-015-0250	.250" (1/4)
PREFIX-015-0500	.500" (1/2)

ITEM NUMBER	(C) OVERALL LENGTH +.010/- .010"
-------------	--

1/32 (.0312")

(A) Outside Diameter: +.0003/+ .0001"

PREFIX-031-0125	.125" (1/8)
PREFIX-031-0187	.188" (3/16)
PREFIX-031-0250	.250" (1/4)
PREFIX-031-0312	.313" (5/16)
PREFIX-031-0375	.375" (3/8)
PREFIX-031-0437	.438" (7/16)
PREFIX-031-0500	.500" (1/2)
PREFIX-031-0562	.563" (9/16)
PREFIX-031-0625	.625" (5/8)
PREFIX-031-0750	.750" (3/4)
PREFIX-031-0875	.875" (7/8)
PREFIX-031-1000	1.000" (1)

ITEM NUMBER	(C) OVERALL LENGTH +.010/- .010"
-------------	--

3/64 (.0468")

(A) Outside Diameter: +.0003/+ .0001"

PREFIX-046-0250	.250" (1/4)
PREFIX-046-0312	.313" (5/16)

ITEM NUMBER	(C) OVERALL LENGTH +.010/- .010"
-------------	--

PREFIX-046-0375	.375" (3/8)
PREFIX-046-0437	.438" (7/16)
PREFIX-046-0500	.500" (1/2)
PREFIX-046-0750	.750" (3/4)
PREFIX-046-1000	1.000" (1)

ITEM NUMBER	(C) OVERALL LENGTH +.010/- .010"
-------------	--

1/16 (.0625")

(A) Outside Diameter: +.0003/+ .0001"

PREFIX-062-0093	.094" (3/32)
PREFIX-062-0125	.125" (1/8)
PREFIX-062-0156	.156" (5/32)
PREFIX-062-0187	.188" (3/16)
PREFIX-062-0250	.250" (1/4)
PREFIX-062-0312	.313" (5/16)
PREFIX-062-0375	.375" (3/8)
PREFIX-062-0437	.438" (7/16)
PREFIX-062-0500	.500" (1/2)
PREFIX-062-0562	.563" (9/16)
PREFIX-062-0625	.625" (5/8)
PREFIX-062-0687	.688" (11/16)
PREFIX-062-0750	.750" (3/4)
PREFIX-062-0875	.875" (7/8)
PREFIX-062-0938	.094" (3/32)
PREFIX-062-1000	1.000" (1)

ITEM NUMBER	(C) OVERALL LENGTH +.010/- .010"
-------------	--

PREFIX-062-1250	1.250" (1-1/4)
PREFIX-062-1500	1.500" (1-1/2)
PREFIX-062-1750	1.750" (1-3/4)
PREFIX-062-2000	2.000" (2)
PREFIX-062-2500	2.500" (2-1/2)
PREFIX-062-3000	3.000" (3)

ITEM NUMBER	(C) OVERALL LENGTH +.010/- .010"
-------------	--

5/64 (.0781")

(A) Outside Diameter: +.0003/+ .0001"

PREFIX-078-0187	.188" (3/16)
PREFIX-078-0250	.250" (1/4)
PREFIX-078-0312	.313" (5/16)
PREFIX-078-0375	.375" (3/8)
PREFIX-078-0437	.438" (7/16)
PREFIX-078-0500	.500" (1/2)
PREFIX-078-0625	.625" (5/8)
PREFIX-078-0750	.750" (3/4)
PREFIX-078-1000	1.000" (1)

ITEM NUMBER	(C) OVERALL LENGTH +.010/- .010"
-------------	--

3/32 (.0938")

(A) Outside Diameter: +.0003/+ .0001"

PREFIX-093-0125	.125" (1/8)
PREFIX-093-0187	.188" (3/16)
PREFIX-093-0250	.250" (1/4)
PREFIX-093-0312	.313" (5/16)

FOR DETAILED SPECIFICATIONS AND TOLERANCES, VISIT HUYETT.COM.

Prices, materials, dimensions, tolerances, designs, and grades subject to change without notice. © 2022 Huyett

*Limited warranty for surface finish: 30 days from date of shipment. See page 8 for details.

DOWEL PINS

HUYETT.COM • 785-392-3017

BOX 232 • MINNEAPOLIS, KS • 67467
SALES@HUYETT.COM • FAX 785-392-2845

STANDARD – IMPERIAL ALLOY

ASME B18.8.2

ITEM NUMBER	(C) OVERALL LENGTH +.010/- .010"
-------------	--

3/32 (.0938")

(A) Outside Diameter: +.0003/+ .0001"

PREFIX-093-0375	.375" (3/8)
PREFIX-093-0437	.438" (7/16)
PREFIX-093-0500	.500" (1/2)
PREFIX-093-0562	.563" (9/16)
PREFIX-093-0625	.625" (5/8)
PREFIX-093-0687	.688" (11/16)
PREFIX-093-0750	.750" (3/4)
PREFIX-093-0875	.875" (7/8)
PREFIX-093-0937	.938" (15/16)
PREFIX-093-1000	1.000" (1)
PREFIX-093-1125	1.125" (1-1/8)
PREFIX-093-1250	1.250" (1-1/4)
PREFIX-093-1375	1.375" (1-3/8)
PREFIX-093-1500	1.500" (1-1/2)
PREFIX-093-1750	1.750" (1-3/4)
PREFIX-093-2000	2.000" (2)
PREFIX-093-3000	3.000" (3)

7/64 (.1093")

(A) Outside Diameter: +.0003/+ .0001"

PREFIX-109-0375	.375" (3/8)
PREFIX-109-0500	.500" (1/2)
PREFIX-109-0625	.625" (5/8)
PREFIX-109-0750	.750" (3/4)
PREFIX-109-1000	1.000" (1)
PREFIX-109-1500	1.500" (1-1/2)

1/8 (.1250")

(A) Outside Diameter: +.0003/+ .0001"

PREFIX-125-0125	.125" (1/8)
PREFIX-125-0156	.156" (5/32)
PREFIX-125-0187	.188" (3/16)
PREFIX-125-0250	.250" (1/4)
PREFIX-125-0312	.313" (5/16)
PREFIX-125-0375	.375" (3/8)
PREFIX-125-0437	.438" (7/16)
PREFIX-125-0500	.500" (1/2)
PREFIX-125-0562	.563" (9/16)
PREFIX-125-0625	.625" (5/8)
PREFIX-125-0687	.688" (11/16)
PREFIX-125-0750	.750" (3/4)
PREFIX-125-0812	.813" (13/16)

1/8 (.1250")

(A) Outside Diameter: +.0003/+ .0001"

PREFIX-125-0875	.875" (7/8)
PREFIX-125-0937	.938" (15/16)
PREFIX-125-1000	1.000" (1)
PREFIX-125-1125	1.125" (1-1/8)
PREFIX-125-1250	1.250" (1-1/4)

ITEM NUMBER	(C) OVERALL LENGTH +.010/- .010"
-------------	--

PREFIX-125-1375	1.375" (1-3/8)
PREFIX-125-1500	1.500" (1-1/2)
PREFIX-125-1625	1.625" (1-5/8)
PREFIX-125-1750	1.750" (1-3/4)
PREFIX-125-2000	2.000" (2)
PREFIX-125-2250	2.250" (2-1/4)
PREFIX-125-2500	2.500" (2-1/2)
PREFIX-125-2750	2.750" (2-3/4)
PREFIX-125-3000	3.000" (3)
PREFIX-125-3500	3.500" (3-1/2)
PREFIX-125-4000	4.000" (4)

5/32 (.1562")

(A) Outside Diameter: +.0003/+ .0001"

PREFIX-156-0187	.188" (3/16)
PREFIX-156-0250	.250" (1/4)
PREFIX-156-0312	.313" (5/16)
PREFIX-156-0375	.375" (3/8)
PREFIX-156-0406	.406" (13/32)
PREFIX-156-0437	.438" (7/16)
PREFIX-156-0500	.500" (1/2)
PREFIX-156-0562	.563" (9/16)
PREFIX-156-0625	.625" (5/8)
PREFIX-156-0750	.750" (3/4)
PREFIX-156-0875	.875" (7/8)
PREFIX-156-1000	1.000" (1)
PREFIX-156-1125	1.125" (1-1/8)
PREFIX-156-1250	1.250" (1-1/4)
PREFIX-156-1375	1.375" (1-3/8)
PREFIX-156-1500	1.500" (1-1/2)
PREFIX-156-1750	1.750" (1-3/4)
PREFIX-156-2000	2.000" (2)
PREFIX-156-2500	2.500" (2-1/2)
PREFIX-156-3000	3.000" (3)
PREFIX-156-4000	4.000" (4)

3/16 (.1875")

(A) Outside Diameter: +.0003/+ .0001"

PREFIX-187-0250	.250" (1/4)
PREFIX-187-0312	.313" (5/16)
PREFIX-187-0375	.375" (3/8)
PREFIX-187-0437	.438" (7/16)
PREFIX-187-0500	.500" (1/2)
PREFIX-187-0562	.563" (9/16)
PREFIX-187-0625	.625" (5/8)
PREFIX-187-0687	.688" (11/16)
PREFIX-187-0750	.750" (3/4)

ITEM NUMBER	(C) OVERALL LENGTH +.010/- .010"
-------------	--

PREFIX-187-0812	.813" (13/16)
PREFIX-187-0875	.875" (7/8)
PREFIX-187-0937	.938" (15/16)
PREFIX-187-1000	1.000" (1)
PREFIX-187-1125	1.125" (1-1/8)
PREFIX-187-1250	1.250" (1-1/4)
PREFIX-187-1375	1.375" (1-3/8)
PREFIX-187-1500	1.500" (1-1/2)
PREFIX-187-1625	1.625" (1-5/8)
PREFIX-187-1750	1.750" (1-3/4)
PREFIX-187-1875	1.875" (1-7/8)
PREFIX-187-2000	2.000" (2)
PREFIX-187-2125	2.125" (2-1/8)
PREFIX-187-2250	2.250" (2-1/4)
PREFIX-187-2500	2.500" (2-1/2)
PREFIX-187-2750	2.750" (2-3/4)
PREFIX-187-3000	3.000" (3)
PREFIX-187-3500	3.500" (3-1/2)
PREFIX-187-4000	4.000" (4)

7/32 (.2188")

(A) Outside Diameter: +.0003/+ .0001"

PREFIX-218-0250	.250" (1/4)
PREFIX-218-0375	.375" (3/8)
PREFIX-218-0500	.500" (1/2)
PREFIX-218-0750	.750" (3/4)
PREFIX-218-1000	1.000" (1)
PREFIX-218-1250	1.250" (1-1/4)
PREFIX-218-1500	1.500" (1-1/2)
PREFIX-218-2000	2.000" (2)

1/4 (.2500")

(A) Outside Diameter: +.0003/+ .0001"

PREFIX-250-0250	.250" (1/4)
PREFIX-250-0312	.313" (5/16)
PREFIX-250-0375	.375" (3/8)
PREFIX-250-0437	.438" (7/16)
PREFIX-250-0500	.500" (1/2)
PREFIX-250-0562	.563" (9/16)
PREFIX-250-0625	.625" (5/8)
PREFIX-250-0687	.688" (11/16)
PREFIX-250-0750	.750" (3/4)
PREFIX-250-0812	.813" (13/16)
PREFIX-250-0875	.875" (7/8)
PREFIX-250-0937	.938" (15/16)
PREFIX-250-1000	1.000" (1)
PREFIX-250-1125	1.125" (1-1/8)

TO ORDER, REPLACE PREFIX
WITH YOUR CHOICE:

DOW • DOWBO

IN STOCK
ORDERS SHIP NEXT
BUSINESS DAY

FOR DETAILED SPECIFICATIONS AND TOLERANCES, VISIT HUYETT.COM.

Prices, materials, dimensions, tolerances, designs, and grades subject to change without notice. © 2022 Huyett

*Limited warranty for surface finish: 30 days from date of shipment. See page 8 for details.

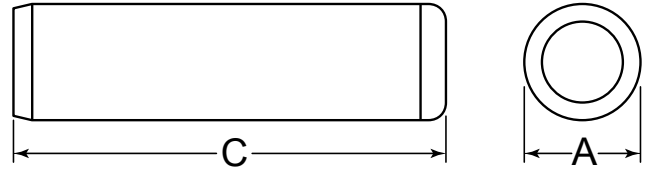


ASME B18.8.2

STANDARD – IMPERIAL ALLOY

PREFIX MATERIAL/FINISH

DOW = ALLOY STEEL, PLAIN*
DOWBO = ALLOY STEEL, BLACK OXIDE
 Material/finish combinations may not be available in all sizes.



ITEM NUMBER	(C) OVERALL LENGTH +.010/-0.010"
PREFIX-250-1250	1.250" (1-1/4)
PREFIX-250-1375	1.375" (1-3/8)
PREFIX-250-1500	1.500" (1-1/2)
PREFIX-250-1625	1.625" (1-5/8)
PREFIX-250-1750	1.750" (1-3/4)
PREFIX-250-1875	1.875" (1-7/8)
PREFIX-250-2000	2.000" (2)
PREFIX-250-2250	2.250" (2-1/4)
PREFIX-250-2500	2.500" (2-1/2)
PREFIX-250-2750	2.750" (2-3/4)
PREFIX-250-3000	3.000" (3)
PREFIX-250-3250	3.250" (3-1/4)
PREFIX-250-3500	3.500" (3-1/2)
PREFIX-250-3750	3.750" (3-3/4)
PREFIX-250-4000	4.000" (4)
PREFIX-250-4500	4.500" (4-1/2)
PREFIX-250-5000	5.000" (5)
PREFIX-250-6000	6.000" (6)

9/32 (.2812") (A) Outside Diameter: +.0003/+0.001"	
PREFIX-281-0500	.500" (1/2)

5/16 (.3125") (A) Outside Diameter: +.0003/+0.001"	
PREFIX-312-0375	.375" (3/8)
PREFIX-312-0500	.500" (1/2)
PREFIX-312-0562	.563" (9/16)
PREFIX-312-0625	.625" (5/8)
PREFIX-312-0750	.750" (3/4)
PREFIX-312-0875	.875" (7/8)
PREFIX-312-1000	1.000" (1)
PREFIX-312-1125	1.125" (1-1/8)
PREFIX-312-1250	1.250" (1-1/4)
PREFIX-312-1375	1.375" (1-3/8)
PREFIX-312-1500	1.500" (1-1/2)
PREFIX-312-1625	1.625" (1-5/8)
PREFIX-312-1750	1.750" (1-3/4)
PREFIX-312-2000	2.000" (2)
PREFIX-312-2250	2.250" (2-1/4)
PREFIX-312-2500	2.500" (2-1/2)
PREFIX-312-2750	2.750" (2-3/4)
PREFIX-312-3000	3.000" (3)
PREFIX-312-3250	3.250" (3-1/4)
PREFIX-312-3500	3.500" (3-1/2)

ITEM NUMBER	(C) OVERALL LENGTH +.010/-0.010"
PREFIX-312-3750	3.750" (3-3/4)

5/16 (.3125") (A) Outside Diameter: +.0003/+0.001"	
PREFIX-312-4000	4.000" (4)
PREFIX-312-5000	5.000" (5)

3/8 (.3750") (A) Outside Diameter: +.0003/+0.001"	
PREFIX-375-0375	.375" (3/8)
PREFIX-375-0500	.500" (1/2)
PREFIX-375-0562	.563" (9/16)
PREFIX-375-0625	.625" (5/8)
PREFIX-375-0750	.750" (3/4)
PREFIX-375-0875	.875" (7/8)
PREFIX-375-1000	1.000" (1)
PREFIX-375-1125	1.125" (1-1/8)
PREFIX-375-1250	1.250" (1-1/4)
PREFIX-375-1375	1.375" (1-3/8)
PREFIX-375-1500	1.500" (1-1/2)
PREFIX-375-1625	1.625" (1-5/8)
PREFIX-375-1750	1.750" (1-3/4)
PREFIX-375-2000	2.000" (2)
PREFIX-375-2250	2.250" (2-1/4)
PREFIX-375-2500	2.500" (2-1/2)
PREFIX-375-2750	2.750" (2-3/4)
PREFIX-375-3000	3.000" (3)
PREFIX-375-3250	3.250" (3-1/4)
PREFIX-375-3500	3.500" (3-1/2)
PREFIX-375-3750	3.750" (3-3/4)
PREFIX-375-4000	4.000" (4)
PREFIX-375-4500	4.500" (4-1/2)
PREFIX-375-5000	5.000" (5)
PREFIX-375-6000	6.000" (6)

7/16 (.4375") (A) Outside Diameter: +.0003/+0.001"	
PREFIX-437-0500	.500" (1/2)
PREFIX-437-0625	.625" (5/8)
PREFIX-437-0750	.750" (3/4)
PREFIX-437-0875	.875" (7/8)
PREFIX-437-1000	1.000" (1)
PREFIX-437-1125	1.125" (1-1/8)
PREFIX-437-1250	1.250" (1-1/4)
PREFIX-437-1500	1.500" (1-1/2)
PREFIX-437-1750	1.750" (1-3/4)

ITEM NUMBER	(C) OVERALL LENGTH +.010/-0.010"
PREFIX-437-2000	2.000" (2)
PREFIX-437-2250	2.250" (2-1/4)
PREFIX-437-2500	2.500" (2-1/2)
PREFIX-437-2750	2.750" (2-3/4)
PREFIX-437-3000	3.000" (3)
PREFIX-437-3500	3.500" (3-1/2)
PREFIX-437-4000	4.000" (4)
PREFIX-437-5000	5.000" (5)

1/2 (.5000") (A) Outside Diameter: +.0003/+0.001"	
PREFIX-500-0500	.500" (1/2)
PREFIX-500-0625	.625" (5/8)
PREFIX-500-0750	.750" (3/4)
PREFIX-500-0875	.875" (7/8)
PREFIX-500-1000	1.000" (1)
PREFIX-500-1125	1.125" (1-1/8)
PREFIX-500-1250	1.250" (1-1/4)
PREFIX-500-1375	1.375" (1-3/8)
PREFIX-500-1437	1.438" (1-7/16)
PREFIX-500-1500	1.500" (1-1/2)
PREFIX-500-1625	1.625" (1-5/8)
PREFIX-500-1750	1.750" (1-3/4)
PREFIX-500-2000	2.000" (2)
PREFIX-500-2250	2.250" (2-1/4)
PREFIX-500-2500	2.500" (2-1/2)
PREFIX-500-2750	2.750" (2-3/4)
PREFIX-500-3000	3.000" (3)
PREFIX-500-3250	3.250" (3-1/4)
PREFIX-500-3500	3.500" (3-1/2)
PREFIX-500-3750	3.750" (3-3/4)
PREFIX-500-4000	4.000" (4)
PREFIX-500-4500	4.500" (4-1/2)
PREFIX-500-5000	5.000" (5)
PREFIX-500-6000	6.000" (6)
PREFIX-500-8000	8.000" (8)
PREFIX-500-10000	10.000" (10)

9/16 (.5625") (A) Outside Diameter: +.0003/+0.001"	
PREFIX-562-1000	1.000" (1)
PREFIX-562-1500	1.500" (1-1/2)
PREFIX-562-2000	2.000" (2)
PREFIX-562-3000	3.000" (3)
PREFIX-562-4000	4.000" (4)

FOR DETAILED SPECIFICATIONS AND TOLERANCES, VISIT HUYETT.COM.

Prices, materials, dimensions, tolerances, designs, and grades subject to change without notice. © 2022 Huyett

*Limited warranty for surface finish: 30 days from date of shipment. See page 8 for details.

DOWEL PINS

HUYETT.COM • 785-392-3017

BOX 232 • MINNEAPOLIS, KS • 67467
SALES@HUYETT.COM • FAX 785-392-2845

STANDARD – IMPERIAL ALLOY

ASME B18.8.2

ITEM NUMBER	(C) OVERALL LENGTH +.010/- .010"
-------------	--

5/8 (.6250")

(A) Outside Diameter: +.0003/+ .0001"

PREFIX-625-0625	.625" (5/8)
PREFIX-625-0750	.750" (3/4)
PREFIX-625-0875	.875" (7/8)
PREFIX-625-1000	1.000" (1)
PREFIX-625-1125	1.125" (1-1/8)
PREFIX-625-1250	1.250" (1-1/4)
PREFIX-625-1375	1.375" (1-3/8)
PREFIX-625-1500	1.500" (1-1/2)
PREFIX-625-1750	1.750" (1-3/4)
PREFIX-625-2000	2.000" (2)
PREFIX-625-2250	2.250" (2-1/4)
PREFIX-625-2500	2.500" (2-1/2)
PREFIX-625-2750	2.750" (2-3/4)
PREFIX-625-3000	3.000" (3)
PREFIX-625-3250	3.250" (3-1/4)
PREFIX-625-3500	3.500" (3-1/2)
PREFIX-625-3750	3.750" (3-3/4)
PREFIX-625-4000	4.000" (4)
PREFIX-625-4500	4.500" (4-1/2)
PREFIX-625-5000	5.000" (5)
PREFIX-625-6000	6.000" (6)

3/4 (.7500")

(A) Outside Diameter: +.0003/+ .0001"

PREFIX-750-0750	.750" (3/4)
PREFIX-750-1000	1.000" (1)
PREFIX-750-1250	1.250" (1-1/4)
PREFIX-750-1375	1.375" (1-3/8)
PREFIX-750-1500	1.500" (1-1/2)
PREFIX-750-1750	1.750" (1-3/4)
PREFIX-750-2000	2.000" (2)

ITEM NUMBER	(C) OVERALL LENGTH +.010/- .010"
-------------	--

PREFIX-750-2250	2.250" (2-1/4)
PREFIX-750-2500	2.500" (2-1/2)
PREFIX-750-2750	2.750" (2-3/4)
PREFIX-750-3000	3.000" (3)
PREFIX-750-3250	3.250" (3-1/4)
PREFIX-750-3500	3.500" (3-1/2)
PREFIX-750-3750	3.750" (3-3/4)
PREFIX-750-4000	4.000" (4)
PREFIX-750-4500	4.500" (4-1/2)
PREFIX-750-5000	5.000" (5)
PREFIX-750-6000	6.000" (6)
PREFIX-750-8000	8.000" (8)
PREFIX-750-10000	10.000" (10)

7/8 (.8750")

(A) Outside Diameter: +.0003/+ .0001"

PREFIX-875-0875	.875" (7/8)
PREFIX-875-1000	1.000" (1)
PREFIX-875-1500	1.500" (1-1/2)
PREFIX-875-2000	2.000" (2)
PREFIX-875-2250	2.250" (2-1/4)

7/8 (.8750")

(A) Outside Diameter: +.0003/+ .0001"

PREFIX-875-2500	2.500" (2-1/2)
PREFIX-875-2750	2.750" (2-3/4)
PREFIX-875-3000	3.000" (3)
PREFIX-875-3250	3.250" (3-1/4)
PREFIX-875-3500	3.500" (3-1/2)
PREFIX-875-3750	3.750" (3-3/4)
PREFIX-875-4000	4.000" (4)
PREFIX-875-4500	4.500" (4-1/2)
PREFIX-875-5000	5.000" (5)
PREFIX-875-6000	6.000" (6)

ITEM NUMBER	(C) OVERALL LENGTH +.010/- .010"
-------------	--

1 (1.0000")

(A) Outside Diameter: +.0003/+ .0001"

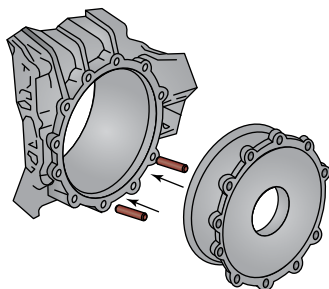
PREFIX-1000-1000	1.000" (1)
PREFIX-1000-1250	1.250" (1-1/4)
PREFIX-1000-1375	1.375" (1-3/8)
PREFIX-1000-1500	1.500" (1-1/2)
PREFIX-1000-1750	1.750" (1-3/4)
PREFIX-1000-2000	2.000" (2)
PREFIX-1000-2250	2.250" (2-1/4)
PREFIX-1000-2500	2.500" (2-1/2)
PREFIX-1000-2750	2.750" (2-3/4)
PREFIX-1000-3000	3.000" (3)
PREFIX-1000-3250	3.250" (3-1/4)
PREFIX-1000-3500	3.500" (3-1/2)
PREFIX-1000-3750	3.750" (3-3/4)
PREFIX-1000-4000	4.000" (4)
PREFIX-1000-4500	4.500" (4-1/2)
PREFIX-1000-5000	5.000" (5)
PREFIX-1000-6000	6.000" (6)
PREFIX-1000-8000	8.000" (8)
PREFIX-1000-10000	10.000" (10)

1-1/4 (1.2500")

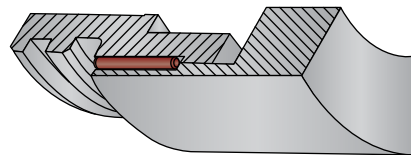
(A) Outside Diameter: +.0003/+ .0001"

PREFIX-1250-1500	1.500" (1-1/2)
PREFIX-1250-2000	2.000" (2)
PREFIX-1250-3000	3.000" (3)
PREFIX-1250-4000	4.000" (4)
PREFIX-1250-6000	6.000" (6)

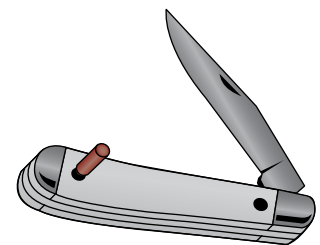
APPLICATIONS



BELL HOUSING
POSITIONING ELEMENT



TRANSMITTING TORQUE
IN A SEAL



DOWEL PINS ARE COMMONLY
USED TO RETAIN A FIXED
POSITION OR TO PRESERVE
ALIGNMENT

FOR DETAILED SPECIFICATIONS AND TOLERANCES, VISIT HUYETT.COM.

Prices, materials, dimensions, tolerances, designs, and grades subject to change without notice. © 2022 Huyett

*Limited warranty for surface finish: 30 days from date of shipment. See page 8 for details.