

MACHINE KEYS

HUYETT.COM • 785-392-3017

BOX 232 • MINNEAPOLIS, KS • 67467
SALES@HUYETT.COM • FAX 785-392-2845

COLD FINISHED STEEL – METRIC

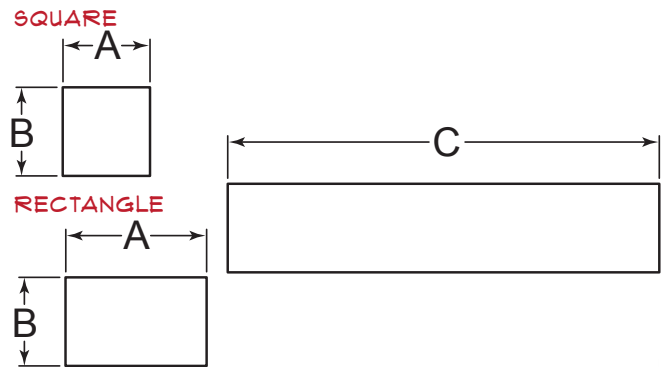
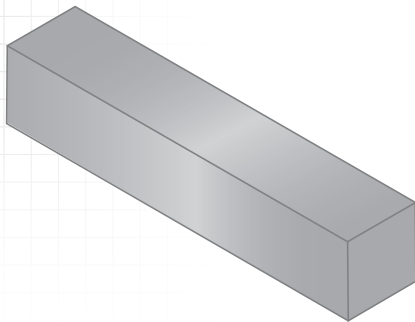
DESCRIPTION

Machine keys are used to transmit torque from a rotating shaft to a gear or sprocket. They can be finished in a variety of shapes, sizes, and materials for just about any application. Standard sizes are ready to use with little or no cutting or filing.

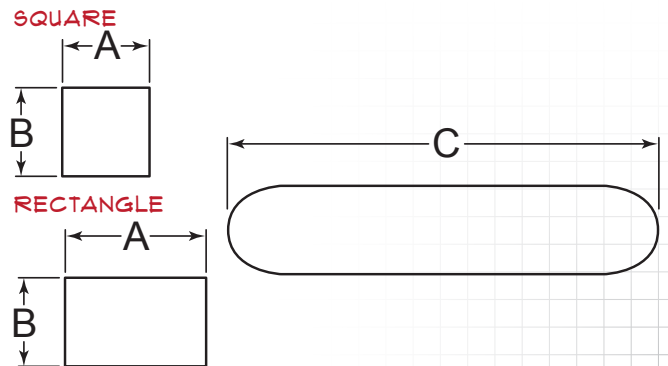
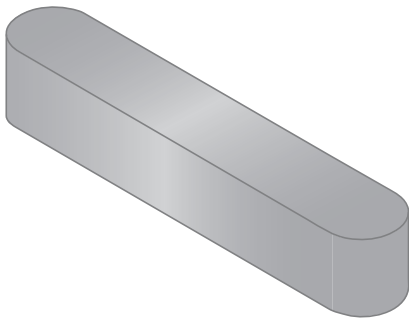
HOW TO IDENTIFY

1. Measure width (A).
2. Measure height (B).
3. Measure length (C).
4. Build the part number from the chart on the next page.

FORM B



FORM A



PREFIX MATERIAL/FINISH

FORM B

UNDERSIZE

- 30 = Cold Finished Steel, Plain*
- 31 = Cold Finished Steel, Zinc Clear Trivalent

OVERSIZE

- 35 = Cold Finished Steel, Plain*
- 36 = Cold Finished Steel, Zinc Clear Trivalent

FORM A

UNDERSIZE

- 32 = Cold Finished Steel, Plain*
- 32Z = Cold Finished Steel, Zinc Clear Trivalent

OVERSIZE

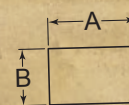
- 37 = Cold Finished Steel, Plain*

Material/finish combinations may not be available in all sizes. Unless specifically stated, our standard machine key stock (30 series) is any one of the following grades, subject to market availability: 1018, 1035, 1045, 1095, 1215, or 8630. Call for precise grade.

SEE PAGE 66 FOR
TOLERANCES

MEASURING METRIC KEYS

Metric machine keys are available in square or rectangle profiles.



Metric machine keys call out width (A) first, then height (B).

METRIC

FOR DETAILED SPECIFICATIONS AND TOLERANCES, VISIT HUYETT.COM.

Prices, materials, dimensions, tolerances, designs, and grades subject to change without notice. © 2016 G.L. Huyett

*Limited warranty for surface finish: 30 days from date of shipment. See page 12 for details.



COLD FINISHED STEEL – METRIC

ZINC PLATING AND OTHER FINISHES AVAILABLE FOR ALL PARTS
SEE PAGE 16

HOW TO BUILD A PART NUMBER

LIST THE LARGER DIMENSION OF (A) OR (B) FIRST

320606-030

ITEM PREFIX

(A)
WIDTH

(B)
HEIGHT

(C)
LENGTH

2 mm to 50 mm

2 mm to 50 mm

4 mm to <305 mm

32

06

06

-030

TO ORDER CHOOSE YOUR MATERIAL,

CHOOSE YOUR WIDTH,

CHOOSE YOUR HEIGHT,

CHOOSE YOUR LENGTH.

CODE	MATERIAL
30	Cold Finished Steel, Plain*, Form B, Undersize
31	Cold Finished Steel, Zinc Clear Trivalent, Form B, Undersize
32	Cold Finished Steel, Plain*, Form A, Undersize
32Z	Cold Finished Steel, Zinc Clear Trivalent, Form A, Undersize
35	Cold Finished Steel, Plain*, Form B, Oversize
36	Cold Finished Steel, Zinc Clear Trivalent, Form B, Oversize
37	Cold Finished Steel, Plain*, Form A, Oversize

CODE	WIDTH & HEIGHT SIZE OPTIONS
02	2.00 mm
03	3.00 mm
04	4.00 mm
05	5.00 mm
06	6.00 mm
07	7.00 mm
08	8.00 mm
09	9.00 mm
10	10.00 mm
11	11.00 mm
12	12.00 mm
13	13.00 mm
14	14.00 mm
15	15.00 mm
16	16.00 mm
18	18.00 mm
20	20.00 mm
22	22.00 mm
24	24.00 mm
25	25.00 mm
28	28.00 mm
30	30.00 mm
32	32.00 mm
36	36.00 mm
40	40.00 mm
45	45.00 mm
50	50.00 mm

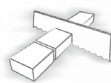
CODE	LENGTH
004	4.00 mm
008	8.00 mm
010	10.00 mm
012	12.00 mm
014	14.00 mm
025	25.00 mm
030	30.00 mm
040	40.00 mm
050	50.00 mm
063	63.00 mm
070	70.00 mm
080	80.00 mm
090	90.00 mm
100	100.00 mm
120	120.00 mm
150	150.00 mm
180	180.00 mm
200	200.00 mm
220	220.00 mm
250	250.00 mm
280	280.00 mm
300	300.00 mm

Nonstandard lengths less than 305 mm are available.

Nonstandard sizes up to 50 mm are available.

DON'T SEE WHAT YOU'RE LOOKING FOR? CONTACT SALES@HUYETT.COM OR CALL 785-392-3017

MANUFACTURING CAPABILITIES:



Sawing



Milling



Drilling



Turning



Tumbling



Surface Grinding



Centerless Grinding

FOR DETAILED SPECIFICATIONS AND TOLERANCES, VISIT HUYETT.COM.

Prices, materials, dimensions, tolerances, designs, and grades subject to change without notice. © 2016 G.L. Huyett

*Limited warranty for surface finish: 30 days from date of shipment. See page 12 for details.

MACHINE KEYS

HUYETT.COM • 785-392-3017

BOX 232 • MINNEAPOLIS, KS • 67467

SALES@HUYETT.COM • FAX 785-392-2845

METRIC TOLERANCES

MATERIAL		FORM	SQUARE		RECTANGLE		LENGTH		
(Prefix)	(Material/Finish)		(Size Range)	(Tolerance)	(Size Range)	(Tolerance)	(Size Range)	(Tolerance)	
Cold Finished Steel									
30	Cold Finished Steel, Plain*, Undersize	Form B	0 – 3 mm	+0/-0.025 mm	See "DIN 6880 Standard Tolerancing for Flat Metric Steels," page 32.		10 – 28 mm	+0/-0.200 mm	
			>3 – 6 mm	+0/-0.030 mm			>28 – 80 mm	+0/-0.300 mm	
		>6 – 10 mm	+0/-0.036 mm	>80 – 250 mm			+0/-0.500 mm		
31	Cold Finished Steel, Zinc Clear Trivalent, Undersize		>10 – 19 mm	+0/-0.043 mm				>250 mm	Call for tolerance.
			>19 – 30 mm	+0/-0.052 mm					
			>30 – 50 mm	+0/-0.062 mm					
32	Cold Finished Steel, Plain*, Undersize	Form A							
32Z	Cold Finished Steel, Zinc Clear Trivalent, Undersize								
35	Cold Finished Steel, Plain*, Oversize	Form B	All Sizes	+0.076/-0 mm	All Sizes	+0.076/-0 mm			
36	Cold Finished Steel, Zinc Clear Trivalent, Oversize								
37	Cold Finished Steel, Plain*, Oversize	Form A							
Stainless Steel									
70	300 Stainless Steel, Plain, Undersize	Form B	0 – 3 mm	+0/-0.025 mm	(Width Size)		10 – 28 mm	+0/-0.200 mm	
			>3 – 6 mm	+0/-0.030 mm	1.5 – 3 mm	+0/-0.060 mm	>28 – 80 mm	+0/-0.300 mm	
			>7 – 10 mm	+0/-0.036 mm	4 – 6 mm	+0/-0.075 mm	>80 – 250 mm	+0/-0.500 mm	
			>10 – 19 mm	+0/-0.043 mm	8 – 10 mm	+0/-0.090 mm	>250 mm	Call for tolerance.	
			>19 – 30 mm	+0/-0.052 mm	12 – 18 mm	+0/-0.110 mm			
			>30 – 50 mm	+0/-0.062 mm	20 – 30 mm	+0/-0.130 mm			
72	300 Stainless Steel, Plain, Undersize	Form A			(Height Size)				
					5 – 6 mm	+0/-0.075 mm			
					8 – 10 mm	+0/-0.090 mm			
					12 – 16 mm	+0/-0.110 mm			
					20 – 30 mm	+0/-0.130 mm			
					32 – 50 mm	+0/-0.250 mm			
75	300 Series Stainless Steel, Plain, Oversize	Form B	All Sizes	+0.076/-0 mm	All Sizes	+0.076/-0 mm			
80	316 Stainless Steel, Plain, Undersize	Form B	0 – 3 mm	+0/-0.025 mm	(Width Size)				
			>3 – 6 mm	+0/-0.030 mm	1.5 – 3 mm	+0/-0.060 mm			
			>7 – 10 mm	+0/-0.036 mm	4 – 6 mm	+0/-0.075 mm			
			>10 – 19 mm	+0/-0.043 mm	8 – 10 mm	+0/-0.090 mm			
			>19 – 30 mm	+0/-0.052 mm	12 – 18 mm	+0/-0.110 mm			
			>30 – 50 mm	+0/-0.062 mm	20 – 30 mm	+0/-0.130 mm			
					(Height Size)				
					5 – 6 mm	+0/-0.075 mm			
					8 – 10 mm	+0/-0.090 mm			
					12 – 16 mm	+0/-0.110 mm			
					20 – 30 mm	+0/-0.130 mm			
					32 – 50 mm	+0/-0.250 mm			

Note: Unless specifically stated, our standard machine key stock (30 series) is any one of the following grades, subject to market availability: 1018, 1035, 1045, 1095, 1215, or 8630. Call for precise grade.

FOR DETAILED SPECIFICATIONS AND TOLERANCES, VISIT HUYETT.COM.

Prices, materials, dimensions, tolerances, designs, and grades subject to change without notice. © 2016 G.L. Huyett

*Limited warranty for surface finish: 30 days from date of shipment. See page 12 for details.