

# CLEVIS PINS

HUYETT.COM • 785-392-3017

BOX 232 • MINNEAPOLIS, KS • 67467  
SALES@HUYETT.COM • FAX 785-392-2845

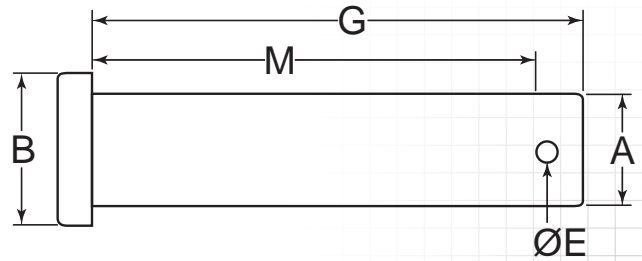
## STANDARD – IMPERIAL

### DESCRIPTION

Solid pin with standard flat head that secures with a hitch pin clip or cotter pin through a hole drilled in the opposite end. Clevis pins are used as a quick and secure fastener in many agricultural and industrial applications.

### HOW TO IDENTIFY

1. Verify flat head pin with hole at opposite end.
2. Measure diameter (A).
3. Measure shank length (G).
4. Confirm effective length (M).
5. Find the part in the chart below.



### PREFIX MATERIAL/FINISH

CLP	=	LOW CARBON STEEL, PLAIN*
CLPs	=	STAINLESS STEEL
CLPs6	=	MARINE GRADE 316 STAINLESS STEEL
CLPZ	=	ZINC CLEAR
CLPY	=	ZINC YELLOW

Material/finish combinations may not be available in all sizes.

ADDITIONAL SIZES AND FINISHES MAY BE AVAILABLE UPON REQUEST

ITEM NUMBER	(G) SHANK LENGTH	(M) EFFECTIVE LENGTH
-------------	------------------	----------------------

### 3/16 (.188")

(A) Outside Diameter: .186/.181"

(B) Head Diameter: .310", .320/.302"  
(E) Hole Diameter: .094", .103/.088"  
(G) Tolerance: +.020/-.000" Use With: BP-223, Pg. 106

PREFIX-0187-0500	.500" (1/2)	.359"
PREFIX-0187-0593	.594" (19/32)	.452"
PREFIX-0187-0625	.625" (5/8)	.484"
PREFIX-0187-0750	.750" (3/4)	.609"
PREFIX-0187-0875	.875" (7/8)	.734"
PREFIX-0187-1000	1.000" (1)	.859"
PREFIX-0187-1125	1.125" (1-1/8)	.984"
PREFIX-0187-1250	1.250" (1-1/4)	1.109"
PREFIX-0187-1500	1.500" (1-1/2)	1.359"
PREFIX-0187-1750	1.750" (1-3/4)	1.609"
PREFIX-0187-2000	2.000" (2)	1.859"
PREFIX-0187-2250	2.250" (2-1/4)	2.109"
PREFIX-0187-2500	2.500" (2-1/2)	2.359"
PREFIX-0187-3000	3.000" (3)	2.859"

ITEM NUMBER	(G) SHANK LENGTH	(M) EFFECTIVE LENGTH
-------------	------------------	----------------------

### 1/4 (.250")

(A) Outside Diameter: .248/.243"

(B) Head Diameter: .370", .380/.365"  
(E) Hole Diameter: .094", .103/.088"  
(G) Tolerance: +.020/-.000" Use With: BP-213, Pg. 107

PREFIX-0250-0500	.500" (1/2)	.359"
PREFIX-0250-0625	.625" (5/8)	.484"
PREFIX-0250-0750	.750" (3/4)	.609"
PREFIX-0250-0875	.875" (7/8)	.734"
PREFIX-0250-1000	1.000" (1)	.859"
PREFIX-0250-1125	1.125" (1-1/8)	.984"
PREFIX-0250-1250	1.250" (1-1/4)	1.109"
PREFIX-0250-1375	1.375" (1-3/8)	1.234"
PREFIX-0250-1500	1.500" (1-1/2)	1.359"
PREFIX-0250-1625	1.625" (1-5/8)	1.484"
PREFIX-0250-1750	1.750" (1-3/4)	1.609"
PREFIX-0250-1875	1.875" (1-7/8)	1.734"
PREFIX-0250-2000	2.000" (2)	1.859"
PREFIX-0250-2125	2.125" (2-1/8)	1.984"
PREFIX-0250-2250	2.250" (2-1/4)	2.109"
PREFIX-0250-2375	2.375" (2-3/8)	2.234"
PREFIX-0250-2437	2.437" (2-7/16)	2.296"
PREFIX-0250-2500	2.500" (2-1/2)	2.359"
PREFIX-0250-2625	2.625" (2-5/8)	2.484"

ITEM NUMBER	(G) SHANK LENGTH	(M) EFFECTIVE LENGTH
-------------	------------------	----------------------

PREFIX-0250-2750	2.750" (2-3/4)	2.609"
PREFIX-0250-3000	3.000" (3)	2.859"
PREFIX-0250-3250	3.250" (3-1/4)	3.109"
PREFIX-0250-3500	3.500" (3-1/2)	3.359"
PREFIX-0250-3750	3.750" (3-3/4)	3.609"
PREFIX-0250-4000	4.000" (4)	3.859"
PREFIX-0250-4500	4.500" (4-1/2)	4.359"
PREFIX-0250-5000	5.000" (5)	4.859"
PREFIX-0250-5500	5.500" (5-1/2)	5.350"

### 5/16 (.313")

(A) Outside Diameter: .311/.306"

(B) Head Diameter: .434", .444/.437"  
(E) Hole Diameter: .141", .150/.135"  
(G) Tolerance: +.020/-.000" Use With: BP-213, Pg. 107

PREFIX-0312-0500	.500" (1/2)	.281"
PREFIX-0312-0750	.750" (3/4)	.531"
PREFIX-0312-0875	.875" (7/8)	.656"
PREFIX-0312-0968	.968" (31/32)	.750"
PREFIX-0312-1000	1.000" (1)	.781"
PREFIX-0312-1125	1.125" (1-1/8)	.906"
PREFIX-0312-1187	1.187" (1-3/16)	.968"
PREFIX-0312-1250	1.250" (1-1/4)	1.031"
PREFIX-0312-1375	1.375" (1-3/8)	1.156"
PREFIX-0312-1500	1.500" (1-1/2)	1.281"

TO ORDER, REPLACE PREFIX WITH YOUR CHOICE:  
CLP • CLPs • CLPs6  
CLPZ • CLPY

FOR DETAILED SPECIFICATIONS AND TOLERANCES, VISIT HUYETT.COM.

Prices, materials, dimensions, tolerances, designs, and grades subject to change without notice. © 2015 G.L. Huyett

\*Limited warranty for surface finish: 30 days from date of shipment. See page 8 for details.



## STANDARD – IMPERIAL

ITEM NUMBER	(G) SHANK LENGTH	(M) EFFECTIVE LENGTH
PREFIX-0312-1625	1.625" (1-5/8)	1.406"
PREFIX-0312-1687	1.687" (1-11/16)	1.468"
PREFIX-0312-1750	1.750" (1-3/4)	1.531"
PREFIX-0312-1812	1.812" (1-13/16)	1.593"
PREFIX-0312-1875	1.875" (1-7/8)	1.656"
PREFIX-0312-1937	1.937" (1-15/16)	1.718"
PREFIX-0312-2000	2.000" (2)	1.781"
PREFIX-0312-2125	2.125" (2-1/8)	1.906"
PREFIX-0312-2187	2.187" (2-3/16)	1.968"
PREFIX-0312-2250	2.250" (2-1/4)	2.031"
PREFIX-0312-2375	2.375" (2-3/8)	2.156"
PREFIX-0312-2500	2.500" (2-1/2)	2.281"
PREFIX-0312-2625	2.625" (2-5/8)	2.406"
PREFIX-0312-2750	2.750" (2-3/4)	2.531"
PREFIX-0312-2812	2.812" (2-13/16)	2.593"
PREFIX-0312-2875	2.875" (2-7/8)	2.656"
PREFIX-0312-3000	3.000" (3)	2.781"
PREFIX-0312-3125	3.125" (3-1/8)	2.906"
PREFIX-0312-3250	3.250" (3-1/4)	3.031"
PREFIX-0312-3500	3.500" (3-1/2)	3.281"
PREFIX-0312-3750	3.750" (3-3/4)	3.531"
PREFIX-0312-4000	4.000" (4)	3.781"
PREFIX-0312-4500	4.500" (4-1/2)	4.281"
PREFIX-0312-5000	5.000" (5)	4.781"
PREFIX-0312-6000	6.000" (6)	5.781"

ITEM NUMBER	(G) SHANK LENGTH	(M) EFFECTIVE LENGTH
PREFIX-0375-1250	1.250" (1-1/4)	1.015"
PREFIX-0375-1312	1.312" (1-5/16)	1.078"
PREFIX-0375-1375	1.375" (1-3/8)	1.140"
PREFIX-0375-1500	1.500" (1-1/2)	1.265"
PREFIX-0375-1625	1.625" (1-5/8)	1.390"
PREFIX-0375-1750	1.750" (1-3/4)	1.515"
PREFIX-0375-1875	1.875" (1-7/8)	1.640"
PREFIX-0375-2000	2.000" (2)	1.765"
PREFIX-0375-2125	2.125" (2-1/8)	1.890"
PREFIX-0375-2250	2.250" (2-1/4)	2.015"
PREFIX-0375-2375	2.375" (2-3/8)	2.140"
PREFIX-0375-2500	2.500" (2-1/2)	2.265"
PREFIX-0375-2625	2.625" (2-5/8)	2.390"
PREFIX-0375-2750	2.750" (2-3/4)	2.515"
PREFIX-0375-3000	3.000" (3)	2.765"
PREFIX-0375-3250	3.250" (3-1/4)	3.015"
PREFIX-0375-3500	3.500" (3-1/2)	3.265"
PREFIX-0375-3750	3.750" (3-3/4)	3.515"
PREFIX-0375-4000	4.000" (4)	3.765"
PREFIX-0375-4500	4.500" (4-1/2)	4.265"
PREFIX-0375-5000	5.000" (5)	4.766"
PREFIX-0375-5250	5.250" (5-1/4)	5.016"
PREFIX-0375-5500	5.500" (5-1/2)	5.266"
PREFIX-0375-6000	6.000" (6)	5.766"
PREFIX-0375-6125	6.125" (6-1/8)	5.891"

ITEM NUMBER	(G) SHANK LENGTH	(M) EFFECTIVE LENGTH
PREFIX-0437-2250	2.250" (2-1/4)	2.015"
PREFIX-0437-2375	2.375" (2-3/8)	2.140"
PREFIX-0437-2500	2.500" (2-1/2)	2.265"
PREFIX-0437-2625	2.625" (2-5/8)	2.390"
PREFIX-0437-2750	2.750" (2-3/4)	2.515"
PREFIX-0437-3000	3.000" (3)	2.765"
PREFIX-0437-3500	3.500" (3-1/2)	3.265"
PREFIX-0437-4000	4.000" (4)	3.765"
PREFIX-0437-4500	4.500" (4-1/2)	4.265"
PREFIX-0437-5000	5.000" (5)	4.765"
PREFIX-0437-5500	5.500" (5-1/2)	5.265"
PREFIX-0437-6000	6.000" (6)	5.765"

### 1/2 (.500")

(A) Outside Diameter: .496/.491"

(B) Head Diameter: .620", .630/.615"

(E) Hole Diameter: .156", .166/.151"

(G) Tolerance +.020/-.000" Use With: BP-211, Pg. 109

PREFIX-0500-0750	.750" (3/4)	.515"
PREFIX-0500-1000	1.000" (1)	.765"
PREFIX-0500-1250	1.250" (1-1/4)	1.015"
PREFIX-0500-1375	1.375" (1-3/8)	1.140"
PREFIX-0500-1500	1.500" (1-1/2)	1.265"
PREFIX-0500-1750	1.750" (1-3/4)	1.515"
PREFIX-0500-2000	2.000" (2)	1.765"
PREFIX-0500-2250	2.250" (2-1/4)	2.015"
PREFIX-0500-2500	2.500" (2-1/2)	2.265"
PREFIX-0500-2562	2.563" (2-9/16)	2.327"
PREFIX-0500-2625	2.625" (2-5/8)	2.390"
PREFIX-0500-2750	2.750" (2-3/4)	2.515"
PREFIX-0500-3000	3.000" (3)	2.765"
PREFIX-0500-3500	3.500" (3-1/2)	3.265"
PREFIX-0500-4000	4.000" (4)	3.765"
PREFIX-0500-4500	4.500" (4-1/2)	4.265"
PREFIX-0500-5000	5.000" (5)	4.765"
PREFIX-0500-6000	6.000" (6)	5.765"
PREFIX-0500-7500	7.500" (7-1/2)	7.265"

### 3/8 (.375")

(A) Outside Diameter: .373/.368"

(B) Head Diameter: .500", .510/.490"

(E) Hole Diameter: .156", .166/.151"

(G) Tolerance +.020/-.000" Use With: BP-213, Pg. 107

PREFIX-0375-0625	.625" (5/8)	.390"
PREFIX-0375-0750	.750" (3/4)	.515"
PREFIX-0375-0875	.875" (7/8)	.640"
PREFIX-0375-1000	1.000" (1)	.765"
PREFIX-0375-1093	1.093" (1-3/32)	.859"
PREFIX-0375-1125	1.125" (1-1/8)	.890"

### 7/16 (.437")

(A) Outside Diameter: .436/.431"

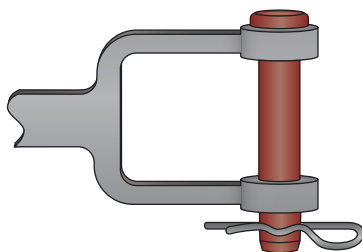
(B) Head Diameter: .560", .570/.552"

(E) Hole Diameter: .156", .166/.151"

(G) Tolerance +.020/-.000" Use With: BP-211, Pg. 109

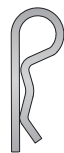
PREFIX-0437-1000	1.000" (1)	.765"
PREFIX-0437-1250	1.250" (1-1/4)	1.015"
PREFIX-0437-1500	1.500" (1-1/2)	1.265"
PREFIX-0437-1625	1.625" (1-5/8)	1.390"
PREFIX-0437-1750	1.750" (1-3/4)	1.515"
PREFIX-0437-2000	2.000" (2)	1.765"

### APPLICATION



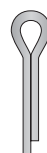
AS A SWIVELING HITCH

### PEOPLE WHO BOUGHT THESE ALSO BOUGHT



BRIDGE PINS

Page 106



COTTER PINS

Page 82



BOW TIE COTTER PINS

Page 96



HAIR PINS

Page 119



DOUBLE-LOOP BRIDGE PINS

Page 116



CIRCLE COTTER PINS

Page 98



RING COTTER PINS

Page 97

FOR DETAILED SPECIFICATIONS AND TOLERANCES, VISIT HUYETT.COM.

Prices, materials, dimensions, tolerances, designs, and grades subject to change without notice. © 2015 G.L. Huyett

\*Limited warranty for surface finish: 30 days from date of shipment. See page 8 for details.

# CLEVIS PINS

HUYETT.COM • 785-392-3017

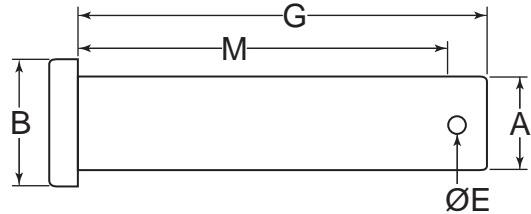
BOX 232 • MINNEAPOLIS, KS • 67467  
SALES@HUYETT.COM • FAX 785-392-2845

## STANDARD – IMPERIAL

### PREFIX MATERIAL/FINISH

- CLP = LOW CARBON STEEL, PLAIN\*
- CLP6 = STAINLESS STEEL
- CLP66 = MARINE GRADE 316 STAINLESS STEEL
- CLPZ = ZINC CLEAR
- CLPY = ZINC YELLOW

Material/finish combinations may not be available in all sizes.



ITEM NUMBER	(G) SHANK LENGTH	(M) EFFECTIVE LENGTH
-------------	------------------	----------------------

### 9/16 (.562")

(A) Outside Diameter: .558/.553"

(B) Head Diameter: .810", .820/.802"  
(E) Hole Diameter: .156", .166/.151"  
(G) Tolerance +.020/-0.000" Use With: BP-211, Pg. 109

PREFIX-0562-1500	1.500" (1-1/2)	1.266"
PREFIX-0562-1750	1.750" (1-3/4)	1.516"
PREFIX-0562-2000	2.000" (2)	1.765"
PREFIX-0562-2250	2.250" (2-1/4)	2.016"
PREFIX-0562-2500	2.500" (2-1/2)	2.266"
PREFIX-0562-2750	2.750" (2-3/4)	2.516"
PREFIX-0562-3000	3.000" (3)	2.765"
PREFIX-0562-3500	3.500" (3-1/2)	3.266"
PREFIX-0562-4000	4.000" (4)	3.765"

### 5/8 (.625")

(A) Outside Diameter: .621/.616"

(B) Head Diameter: .810", .820/.802"  
(E) Hole Diameter: .156", .166/.151"  
(G) Tolerance +.020/-0.000" Use With: BP-211, Pg. 109

PREFIX-0625-1250	1.250" (1-1/4)	1.015"
PREFIX-0625-1500	1.500" (1-1/2)	1.266"
PREFIX-0625-1750	1.750" (1-3/4)	1.515"
PREFIX-0625-2000	2.000" (2)	1.765"
PREFIX-0625-2250	2.250" (2-1/4)	2.016"
PREFIX-0625-2500	2.500" (2-1/2)	2.265"
PREFIX-0625-3000	3.000" (3)	2.765"
PREFIX-0625-3250	3.250" (3-1/4)	3.015"
PREFIX-0625-3500	3.500" (3-1/2)	3.266"
PREFIX-0625-4000	4.000" (4)	3.765"
PREFIX-0625-4250	4.500" (4-1/2)	4.015"
PREFIX-0625-4500	4.500" (4-1/2)	4.266"
PREFIX-0625-5000	5.000" (5)	4.765"
PREFIX-0625-5500	5.500" (5-1/2)	5.265"
PREFIX-0625-6000	6.000" (6)	5.765"

### 3/4 (.750")

(A) Outside Diameter: .746/.741"

(B) Head Diameter: .934", .944/.932"  
(E) Hole Diameter: .156", .166/.151"  
(G) Tolerance +.020/-0.000" Use With: BP-211, Pg. 109

PREFIX-0750-2000	2.000" (2)	1.765"
PREFIX-0750-2500	2.500" (2-1/2)	2.265"
PREFIX-0750-2750	2.750" (2-3/4)	2.515"

ITEM NUMBER	(G) SHANK LENGTH	(M) EFFECTIVE LENGTH
-------------	------------------	----------------------

PREFIX-0750-3000	3.000" (3)	2.765"
PREFIX-0750-3500	3.500" (3-1/2)	3.265"
PREFIX-0750-3750	3.750" (3-3/4)	3.515"
PREFIX-0750-4000	4.000" (4)	3.765"
PREFIX-0750-4500	4.500" (4-1/2)	4.265"
PREFIX-0750-5000	5.000" (5)	4.766"
PREFIX-0750-5500	5.500" (5-1/2)	5.266"
PREFIX-0750-6000	6.000" (6)	5.766"
PREFIX-0750-6500	6.500" (6-1/2)	6.266"

### 7/8 (.875")

(A) Outside Diameter: .871/.866"

(B) Head Diameter: 1.030", 1.040/1.020"  
(E) Hole Diameter: .203", .213/.198"  
(G) Tolerance +.020/-0.000" Use With: BP-210, Pg. 110

PREFIX-0875-2000	2.000" (2)	1.703"
PREFIX-0875-2500	2.500" (2-1/2)	2.203"
PREFIX-0875-2750	2.750" (2-3/4)	2.453"
PREFIX-0875-3000	3.000" (3)	2.703"
PREFIX-0875-3500	3.500" (3-1/2)	3.203"
PREFIX-0875-4000	4.000" (4)	3.703"
PREFIX-0875-4500	4.500" (4-1/2)	4.203"
PREFIX-0875-5000	5.000" (5)	4.703"
PREFIX-0875-5500	5.500" (5-1/2)	5.203"
PREFIX-0875-6000	6.000" (6)	5.703"
PREFIX-0875-7000	7.000" (7)	6.703"
PREFIX-0875-8000	8.000" (8)	7.703"

### 1 (1.000")

(A) Outside Diameter: .996/.991"

(B) Head Diameter: 1.184", 1.194/1.182"  
(E) Hole Diameter: .203", .213/.198"  
(G) Tolerance +.020/-0.000" Use With: BP-210, Pg. 110

PREFIX-1000-2000	2.000" (2)	1.703"
PREFIX-1000-2250	2.250" (2-1/4)	1.953"
PREFIX-1000-2500	2.500" (2-1/2)	2.203"
PREFIX-1000-2625	2.625" (2-5/8)	2.328"
PREFIX-1000-2750	2.750" (2-3/4)	2.453"
PREFIX-1000-2875	2.875" (2-7/8)	2.578"
PREFIX-1000-3000	3.000" (3)	2.703"
PREFIX-1000-3250	3.250" (3-1/4)	2.953"
PREFIX-1000-3500	3.500" (3-1/2)	3.203"
PREFIX-1000-3750	3.750" (3-3/4)	3.453"
PREFIX-1000-4000	4.000" (4)	3.703"
PREFIX-1000-4156	4.156" (4-5/32)	3.859"

ITEM NUMBER	(G) SHANK LENGTH	(M) EFFECTIVE LENGTH
-------------	------------------	----------------------

PREFIX-1000-4500	4.500" (4-1/2)	4.203"
PREFIX-1000-5000	5.000" (5)	4.703"
PREFIX-1000-5500	5.500" (5-1/2)	5.203"
PREFIX-1000-5750	5.750" (5-3/4)	5.453"
PREFIX-1000-6000	6.000" (6)	5.703"
PREFIX-1000-6500	6.500" (6-1/2)	6.203"
PREFIX-1000-7000	7.000" (7)	6.703"
PREFIX-1000-8000	8.000" (8)	7.703"
PREFIX-1000-9000	9.000" (9)	8.703"
PREFIX-1000-9500	9.500" (9-1/2)	9.203"

### 1-1/8 (1.125")

(A) Outside Diameter: 1.125/1.105"

(B) Head Diameter: 1.375", 1.395/1.355"  
(E) Hole Diameter: .250", .260/.245"  
(G) Tolerance +.020/-0.000" Use With: BP-208, Pg. 112

PREFIX-1125-3000	3.000" (3)	2.375"
PREFIX-1125-4000	4.000" (4)	3.375"
PREFIX-1125-4625	4.625" (4-5/8)	4.000"
PREFIX-1125-5000	5.000" (5)	4.375"
PREFIX-1125-6000	6.000" (6)	5.375"
PREFIX-1125-7000	7.000" (7)	6.375"
PREFIX-1125-8000	8.000" (8)	7.375"
PREFIX-1125-9000	9.000" (9)	8.375"

### 1-1/4 (1.250")

(A) Outside Diameter: 1.250/1.230"

(B) Head Diameter: 1.485", 1.500/1.470"  
(E) Hole Diameter: .250", .260/.245"  
(G) Tolerance +.020/-0.000" Use With: BP-208, Pg. 112

PREFIX-1250-3000	3.000" (3)	2.375"
PREFIX-1250-4000	4.000" (4)	3.375"
PREFIX-1250-5000	5.000" (5)	4.375"
PREFIX-1250-6000	6.000" (6)	5.375"
PREFIX-1250-7000	7.000" (7)	6.625"
PREFIX-1250-8000	8.000" (8)	7.375"
PREFIX-1250-9000	9.000" (9)	8.375"

### 1-3/8 (1.375")

(A) Outside Diameter: 1.375/1.355"

(B) Head Diameter: 1.750", 1.765/1.735"  
(E) Hole Diameter: .250", .260/.245"  
(G) Tolerance +.020/-0.000" Use With: BP-235, Pg. 112

PREFIX-1375-3000	3.000" (3)	2.375"
PREFIX-1375-4000	4.000" (4)	3.375"

FOR DETAILED SPECIFICATIONS AND TOLERANCES, VISIT HUYETT.COM.

Prices, materials, dimensions, tolerances, designs, and grades subject to change without notice. © 2015 G.L. Huyett

\*Limited warranty for surface finish: 30 days from date of shipment. See page 8 for details.



## STANDARD – IMPERIAL

ITEM NUMBER	(G) SHANK LENGTH	(M) EFFECTIVE LENGTH
PREFIX-1375-5000	5.000" (5)	4.375"
PREFIX-1375-6000	6.000" (6)	5.375"
PREFIX-1375-9000	9.000" (9)	8.375"

1-1/2 (1.500")		
(A) Outside Diameter: 1.500/1.480"		
(B) Head Diameter: 2.000", 2.020/1.980"		
(E) Hole Diameter: .250", .260/.245"		
(G) Tolerance +.020/-0.000" Use With: BP-235, Pg. 112		
PREFIX-1500-3000	3.000" (3)	2.375"
PREFIX-1500-4000	4.000" (4)	3.375"
PREFIX-1500-5000	5.000" (5)	4.375"
PREFIX-1500-6000	6.000" (6)	5.375"
PREFIX-1500-9000	9.000" (9)	8.375"

1-5/8 (1.625")		
(A) Outside Diameter: 1.625/1.605"		
(B) Head Diameter: 2.000", 2.020/1.980"		
(E) Hole Diameter: .250", .260/.245"		
(G) Tolerance +.020/-0.000" Use With: CP-250-2250, Pg. 84		
PREFIX-1625-3000	3.000" (3)	2.375"
PREFIX-1625-4000	4.000" (4)	3.375"
PREFIX-1625-5000	5.000" (5)	4.375"
PREFIX-1625-6000	6.000" (6)	5.375"
PREFIX-1625-9000	9.000" (9)	8.375"

1-3/4 (1.750")		
(A) Outside Diameter: 1.730/1.750"		
(B) Head Diameter: 2.250", 2.223/2.227"		
(E) Hole Diameter: .250", .260/.245"		
(G) Tolerance +.020/-0.000" Use With: CP-250-2500, Pg. 84		
PREFIX-1750-3000	3.000" (3)	2.375"
PREFIX-1750-4000	4.000" (4)	3.375"
PREFIX-1750-5000	5.000" (5)	4.375"
PREFIX-1750-6000	6.000" (6)	5.375"
PREFIX-1750-9000	9.000" (9)	8.375"

ITEM NUMBER	(G) SHANK LENGTH	(M) EFFECTIVE LENGTH
-------------	------------------	----------------------

1-7/8 (1.875")		
(A) Outside Diameter: 1.875/1.855"		
(B) Head Diameter: 2.250", 2.227/2.223"		
(E) Hole Diameter: .250", .260/.245"		
(G) Tolerance +.020/-0.000" Use With: CP-250-2500, Pg. 84		
PREFIX-1875-3000	3.000" (3)	2.375"
PREFIX-1875-4000	4.000" (4)	3.375"
PREFIX-1875-5000	5.000" (5)	4.375"
PREFIX-1875-6000	6.000" (6)	5.375"
PREFIX-1875-9000	9.000" (9)	8.375"

ITEM NUMBER	(G) SHANK LENGTH	(M) EFFECTIVE LENGTH
-------------	------------------	----------------------

2 (2.000")		
(A) Outside Diameter: 2.000/1.980"		
(B) Head Diameter: 2.375", 2.395/2.355"		
(E) Hole Diameter: .250", .260/.2445"		
(G) Tolerance +.020/-0.000" Use With: CP-250-3000, Pg. 84		
PREFIX-2000-3000	3.000" (3)	2.375"
PREFIX-2000-4000	4.000" (4)	3.375"
PREFIX-2000-5000	5.000" (5)	4.375"
PREFIX-2000-6000	6.000" (6)	5.375"
PREFIX-2000-9000	9.000" (9)	8.375"

### CUSTOM SOLUTIONS

Let us bag, seal, and label parts in the quantities you want or create a custom assortment of parts branded with your logo.



CUSTOM ASSORTMENTS



CUSTOM MARKING



CUSTOM PACKAGING

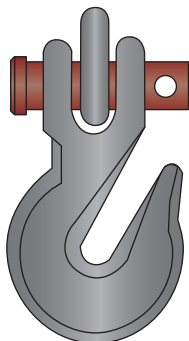


THE PACK LIST THAT WILL CHANGE YOUR LIFE™

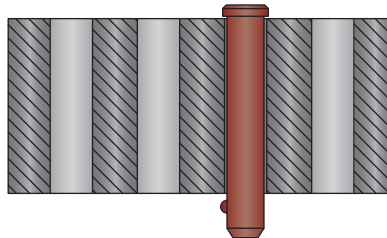


CUSTOMIZED DROP SHIP PACK LIST

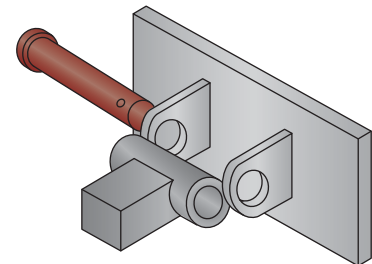
### APPLICATIONS



AS A HOOK CONNECTOR



AS A POSITIONING POINT



AS A TOW BAR CONNECTION