



HOLDING STRONG SINCE 1941

FULL-LINE PRODUCT CATALOG

2017

WILTONTOOLS.COM



HOLDING STRONG SINCE 1941

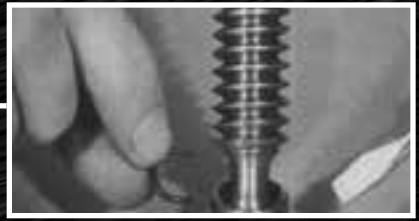
Over 75 years ago, Wilton® designed the first Bullet-Design machinist vise and created the groundwork of quality craftsmanship from which the Wilton brand would rise. The legacy of Wilton® workmanship is the pinnacle in the industry. You can depend on the quality and durability of every tool that bears the Wilton name.



World's first bullet-design Machinist Vise is manufactured. Wilton creates a name for themselves in the market place.



Wilton expands into clamping products with new and innovative ideas.



The invention of the patented replaceable Perma-Pads allows users to replace the the pad instead of the entire clamp.



For the jobs that demand function, strength and mobility, Wilton introduces the innovative ATV All-terrain Vise.



With an adjustable back gauge the Wilton® Strut Cutter allows for quick production shearing of uniform lengths.



Beat the heat, Improve your work environment and work more efficiently with the Cold Front™ 3037 Atomized Cooling Fan

1941 1950 1960 1970 1980 1990 2000 2017



Wilton supports war efforts in WW2 to support our us troops overseas.



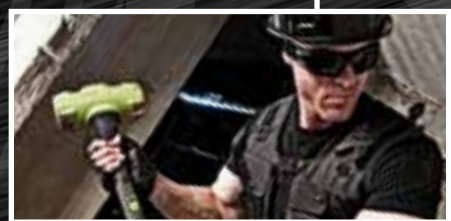
Wilton is the brand of choice in the Automotive boom of the 50's.



Pow-r-arms are introduced into the Wilton product line allowing assembly-line workers hands-free production.



The new Tradesman Vise sets the new standard of quality and durability in vises.



B.A.S.H® Unbreakable® Handle Sledge Hammers are introduced as the world's most durable sledge hammer.



B.A.S.H® Unbreakable® Handle Hammers expand to Grade B for railroad applications.

WILTON®: A CONSUMER FOCUSED BRAND

WILTON®: LIFETIME WARRANTY



CHALLENGER VAN TOUR

With our consumers in mind, we set out on a national tour to reach as many as possible. The Challenger Van Tour launched in 2011 and has made hundreds of stops throughout industrial America.

Aboard the Challenger Van you will find an assortment of our most popular Wilton products, new products, videos, demonstrations, as well as free giveaways.

CHECK WITH YOUR LOCAL WILTON DISTRIBUTOR TO SEE WHEN THE CHALLENGER VAN WILL BE IN YOUR AREA



FIND WILTON ONLINE

Find Wilton on these social media sites to get the latest product news, share your projects and connect with others.



LIKE US ON FACEBOOK
www.facebook.com/WiltonTools



FOLLOW US ON TWITTER
[@Wilton_Tools](https://twitter.com/Wilton_Tools)



CONNECT WITH US ON YOUTUBE
www.youtube.com/WiltonTools

We are confident in every Wilton® tool we manufacture. To prove it, we back our tools and equipment that bear the Wilton® name with a Lifetime Warranty. This includes everything from Vises to Clamps, Pipe Wrenches and B.A.S.H® Hammers. We hope you are as proud and confident of our equipment as we are.

The Wilton® lifetime warranty is for the product's lifetime with no end date. This warranty covers manufacturer's defect only and does not cover misuse, abuse, accidents, negligence, wear and tear, improper repair or alterations, etc. For more information please visit wiltontools.com

** Wilton Strut Cutters and and Cold Front™ Atomized Cooling Fan include a standard One Year warranty

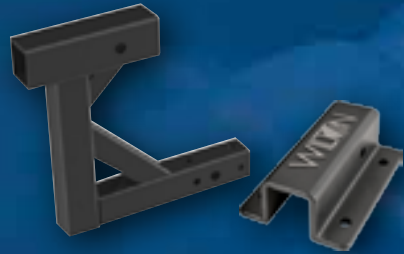


NEW PRODUCTS



TRADESMAN® XC VISES

Combat Extreme Conditions with innovative electroless nickel coating on the Tradesman XC vises.
SEE PAGE 14



ATV® ACCESSORIES

The ATV vise has added another new accessory to the line to elevate the vise from your hitch to a new work height.
SEE PAGE 35



STRUT CUTTER

An innovative portable hydraulic tool designed to cut strut products cleanly and efficiently with no waste, no mess and no de-burring.
SEE PAGE 42



COLD FRONT™ 3037 ATOMIZING FAN

When temperature rises, so do on-the-job risks, damaged productivity and serious injury. Now beat the heat with for good with the Cold Front™ Atomized Cooling Fan.
SEE PAGE 44



B.A.S.H.® GRADE B SLEDGE HAMMERS & SPIKE MAUL

BASH Grade B Hammers and Spike Maul are designed In-Line with Arema Standards and use harder alloy and deep heat treatment permitting heads to be redressed.
SEE PAGE 76

TABLE OF CONTENTS

VISES

| | |
|------------------------------|-------|
| USA Bullet Bench Vises | 8-17 |
| Industrial Bench Vises..... | 18-29 |
| Pow-R-Arms | 30-31 |
| Truck Hitch Vise | 32-35 |
| Machine Vises..... | 36-41 |

STRUT CUTTER

| | |
|--------------------|-------|
| Strut Cutter | 42-43 |
|--------------------|-------|

COOLING FAN

| | |
|------------------------|-------|
| Cold Front™ 3037 | 44-45 |
|------------------------|-------|

CLAMPS

| | |
|------------------------|-------|
| F-Clamps..... | 46-55 |
| C-Clamps | 56-67 |
| Specialty Clamps | 68-69 |

HAND TOOLS

| | |
|---|-------|
| B.A.S.H.® Unbreakable Handle Striking Tools..... | 70-82 |
| Pipe Wrenches | 83 |





BULLET VISES

MADE IN AMERICA. MADE TO LAST.

The Wilton® Bullet Vise family has improved over the years, but has always maintained the same high quality and integrity since 1941. This trademarked design has proven it's superiority for over 75 years. Bullet vises are proudly built in the USA.



**THE BULLET
ADVANTAGE**



**WILTON COMBO
PIPE AND BENCH**



**WILTON
MACHINIST**



**WILTON
TRADESMAN XC**

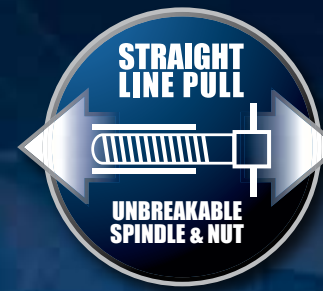
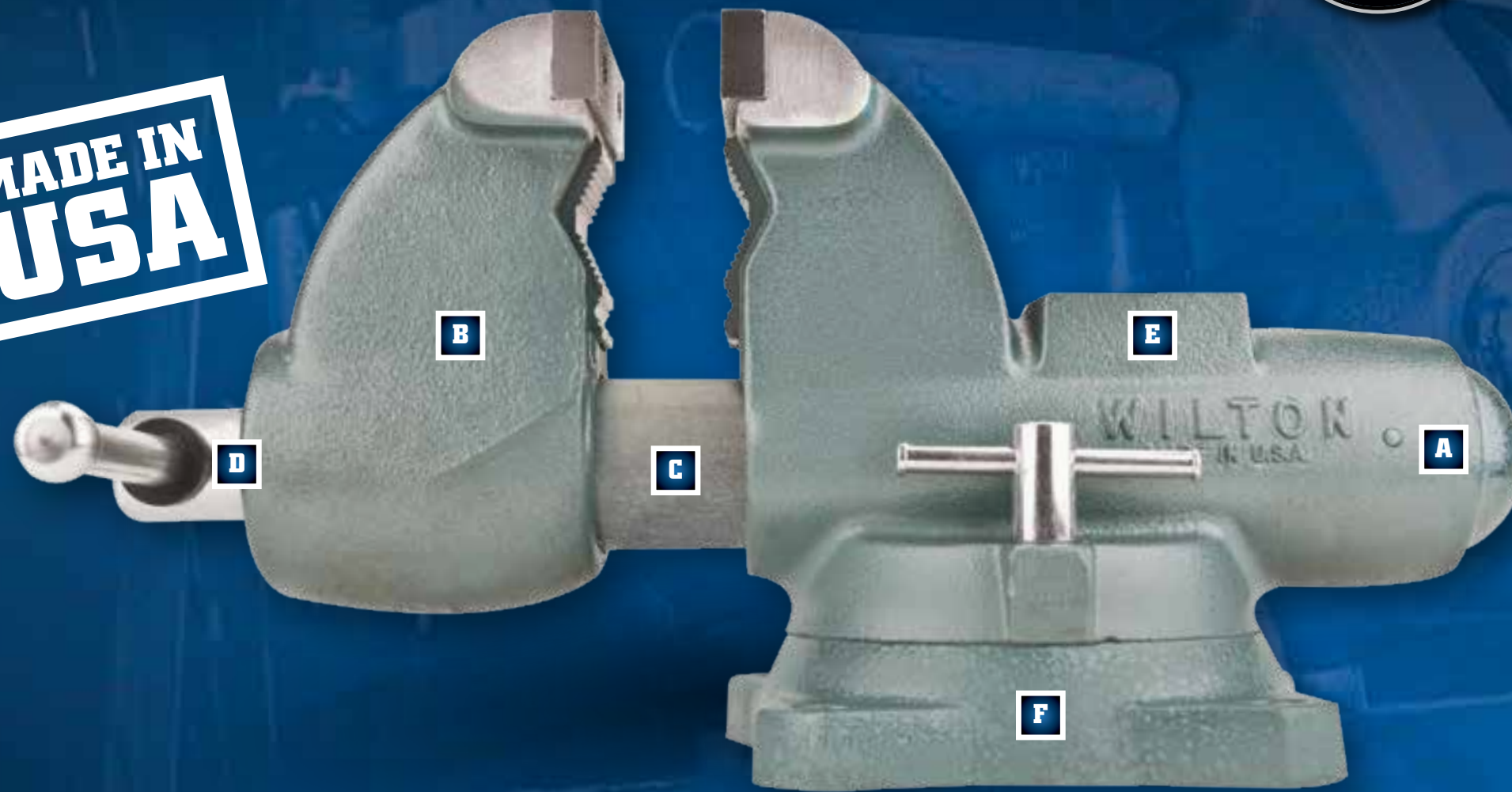


**WILTON
TRADESMAN**

BULLET VISES

THE BULLET ADVANTAGE

MADE IN
USA



DURABILITY

A FULLY ENCLOSED DESIGN:

Extends the life of the vise by protecting all internal components and keeping out dust and debris. Lifetime lubricated and permanently sealed for trouble free service.

B 60,000 PSI DUCTILE IRON BODY:

Virtually indestructible with 2X the strength of grey casted vises.

C PRECISION SLIDE BAR

Keyed for a .003" fit, eliminating movement in the front jaw regardless of opened distance

FUNCTIONALITY

D LONGER SPINDLE NUT:

3X longer and 2X thicker, ensures a lifetime of smooth spindle movement and straight-line pull.

E LARGER ANVIL

2X larger than the average anvil. Designed to take a beating while forming and shaping materials.

F 4 BOLT MOUNTING PATTERN:

4 bolt pattern sturdier than industry-average 3 bolt pattern, maximizing stability during use.

THE WILTON® BULLET DESIGN



FULLY ENCLOSED DESIGN



60,000 PSI DUCTILE IRON BODY



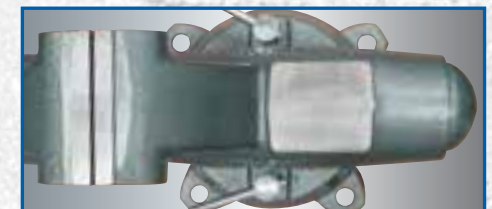
PRECISION SLIDE BAR



LONGER SPINDLE NUT



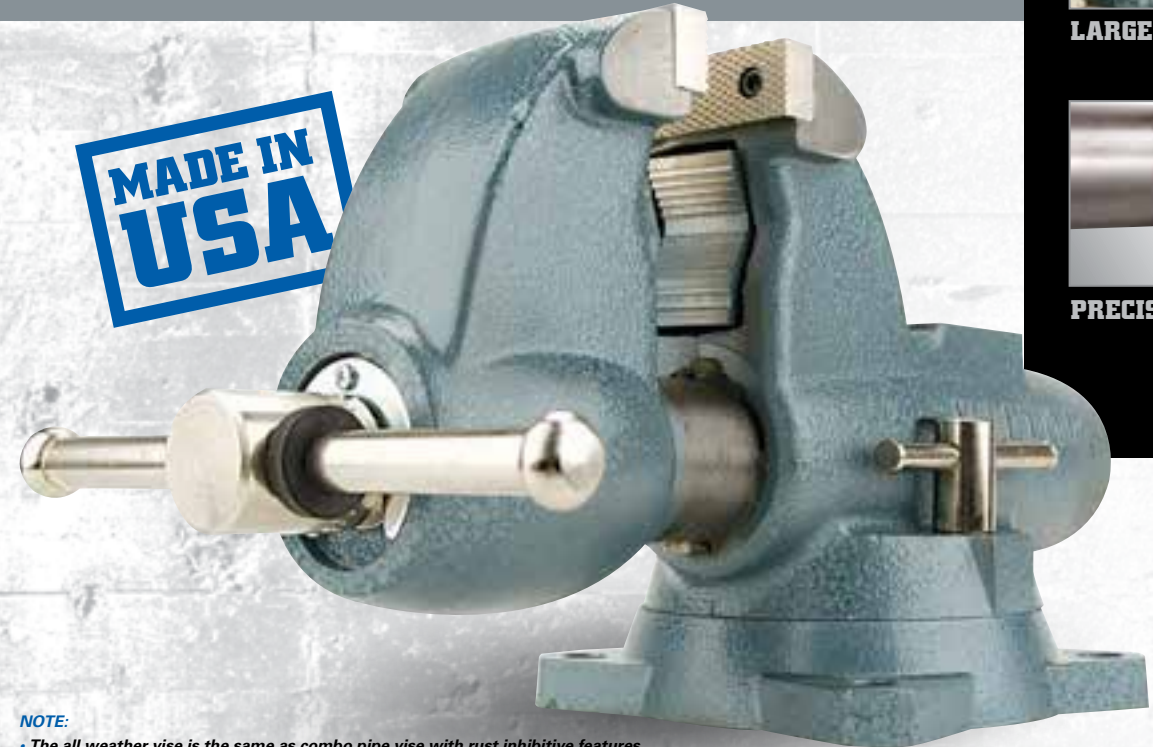
LARGER ANVIL



4 BOLT MOUNTING PATTERN

WILTON® COMBO PIPE & BENCH

WILTON'S WORKHORSE



NOTE:
 • The all weather vise is the same as combo pipe vise with rust inhibitive features.
 • Meets federal spec # GGG-V-410a, Type IV.



SEALED CONSTRUCTION



LARGE ANVIL



PRECISION SLIDE BAR



FEATURES

SELF CENTERING PIPE JAWS:

- Hold up to 6" pipe safely and securely
- Great for irregularly shaped objects

DEEP THROAT STYLE:

- Up to 50% added depth to meet tough job requirements requiring large capacity

IDEAL FOR

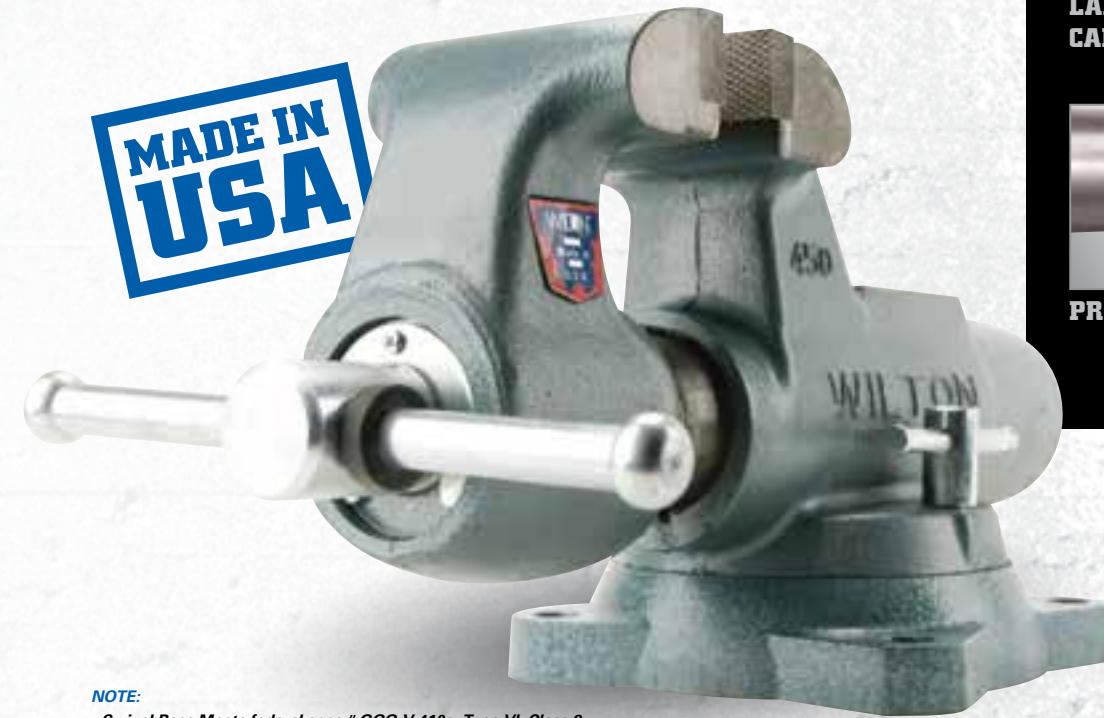
- Plant Maintenance
- Oil Field Service
- Heavy Construction
- Mechanical Trades
- Steel Fabrication

| Stock No. | Model | Jaw Width (in.) | Maximum Opening (in.) | Throat Depth (in.) | Pipe Jaw Capacity (in.) | Net Weight (lbs.) |
|---|-------|-----------------|-----------------------|--------------------|-------------------------|-------------------|
| COMBO PIPE AND BENCH – SWIVEL BASE | | | | | | |
| 10200 | C-0 | 3-1/2 | 5 | 4-1/2 | 1/8 – 2 1/2 | 51 |
| 10225 | C-1 | 4-1/2 | 6 | 4-3/4 | 1/8 – 3 1/2 | 78 |
| 10250 | C-2 | 5 | 7 | 5-5/16 | 1/8 – 4 1/2 | 100 |
| 10275 | C-3 | 6 | 9 | 6-5/8 | 1/4 – 6 | 204 |
| ALL WEATHER COMBO PIPE AND BENCH – SWIVEL BASE | | | | | | |
| 10400 | AW35 | 3-1/2 | 5 | 4-1/2 | 1/8 – 2 1/2 | 51 |
| 10500 | AW45 | 4-1/2 | 6 | 4-3/4 | 1/8 – 3 1/2 | 79 |

| Stock No. | Replacement Jaw Insert Set No. | Replacement Pipe Jaw Insert Set No. |
|-----------|--------------------------------|-------------------------------------|
| 10200 | 2904960 | 2908050 |
| 10225 | 2905000 | 2900770 |
| 10250 | 2903240 | 2900830 |
| 10275 | 2907370 | 2907600 |
| 10400 | 2905040 | 2901100 |
| 10500 | 2907430 | 2907420 |

WILTON® MACHINIST

WILTON'S ORIGINAL VISE



NOTE:
 • Swivel Base Meets federal spec # GGG-V-410a, Type VI, Class 2
 • Stationary Base Meets federal spec # GGG-V-410a, Type VI, Class 1



SEALED CONSTRUCTION



LARGEST WORKING CAPACITY



PRECISION SLIDE BAR



FEATURES

STATIONARY / 360° SWIVEL BASE:

- All sizes available in both stationary and swivel base

MAX JAW CAPACITY:

- Up to 12" jaw opening for jobs demanding maximum holding capacity

LARGE ANVIL:

- Designed to take a pounding while forming and shaping materials

IDEAL FOR

- Machine Shops
- Automotive Maintenance
- Maintenance and Repair
- Metal Fabrication

| Stock No. | Model | Jaw Width (in.) | Jaw Opening (in.) | Throat Depth (in.) | Replacement Jaw Insert Set No. | Net Weight (lbs.) |
|------------------------------------|-------|-----------------|-------------------|--------------------|--------------------------------|-------------------|
| MACHINIST – SWIVEL BASE | | | | | | |
| 10006 | 300S | 3 | 4-3/4 | 2-5/8 | 2903080 | 30 |
| 10011 | 350S | 3-1/2 | 5-1/4 | 2-3/4 | 2904960 | 44 |
| 10016 | 400S | 4 | 6-1/2 | 3-1/2 | 2904980 | 62 |
| 10021 | 450S | 4-1/2 | 7-1/2 | 4 | 2905000 | 71 |
| 10026 | 500S | 5 | 8 | 4-1/4 | 2905020 | 96 |
| 10031 | 600S | 6 | 10 | 5-1/2 | 2903280 | 156 |
| 10036 | 800S | 8 | 12 | 5-13/16 | 2904940 | 238 |
| MACHINIST – STATIONARY BASE | | | | | | |
| 10056 | 300N | 3 | 4-3/4 | 2-5/8 | 2903080 | 25 |
| 10066 | 350N | 3-1/2 | 5-1/4 | 2-3/4 | 2904960 | 35 |
| 10076 | 400N | 4 | 6-1/2 | 3-1/2 | 2904980 | 54 |
| 10086 | 450N | 4-1/2 | 7-1/2 | 4 | 2905000 | 63 |
| 10096 | 500N | 5 | 8 | 4-1/4 | 2905020 | 88 |
| 10107 | 600N | 6 | 10 | 5-1/2 | 2903280 | 143 |
| 10116 | 800N | 8 | 12 | 5-13/16 | 2904940 | 218 |

WILTON® TRADESMAN XC VISES

FOR EXTREME CONDITIONS



**MADE IN
USA**



SEALED CONSTRUCTION



PRECISION SLIDE BAR



LARGE HEAVY-DUTY
ANVIL



FEATURES

JAW INSERTS

- Coated Jaw Inserts prevent corrosion and allow the jaws to be replaced with ease

PIPE JAWS

- Coated Pipe Jaws prevent corrosion and allow pipe jaws to be used with ease

SEALED SPINDLE

- Sealed and Coated Spindle retains lubrication and prevents accumulation of debris inside the vise nut. The electroless nickel coating protects the spindle from corrosion permitting extended use in harsh environments

BODY & SLIDE BAR

- Coated Movable Jaw and Slide Bar ensures the mobility of all moving parts when used in harsh outdoor environments

OVERSIZED HANDLE

- Oversized Handle ensures easy opening and closing of the vise. The electroless nickel coating protects the handle from corrosion in harsh environments

IDEAL FOR

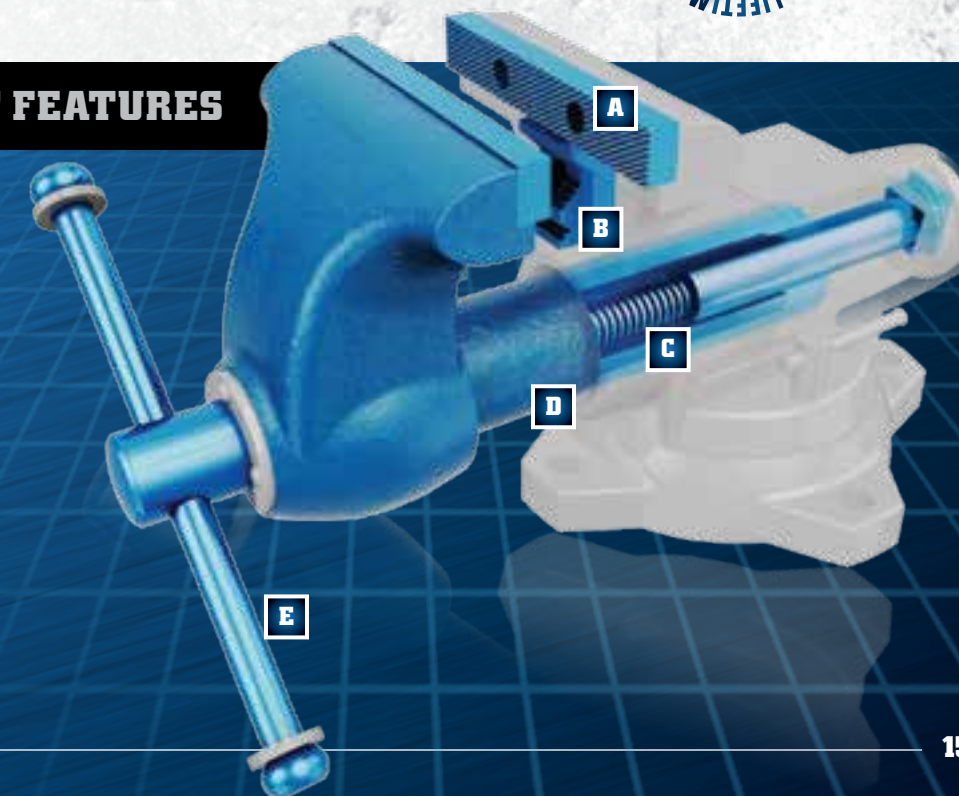
- Utility Work Trucks
- Extreme Environments
- Construction Sites
- Automotive

| Stock No. | Model | Jaw Width (in.) | Jaw Opening (in.) | Throat Depth (in.) | Pipe Jaw Capacity (in.) | Net Weight (lbs.) |
|-------------------------|--------|-----------------|-------------------|--------------------|-------------------------|-------------------|
| TRADESMAN – SWIVEL BASE | | | | | | |
| 28801 | 1765XC | 6-1/2 | 6-1/2 | 4 | 1/4 - 3-1/2 | 71 |
| 28802 | 1780XC | 8 | 7 | 4-3/4 | 1/8 - 3-1/2 | 111 |

| Stock No. | Replacement Jaw Insert Set No. | Replacement Pipe Jaw Insert Set No. |
|-----------|--------------------------------|-------------------------------------|
| 28801 | 2908080XC | 2904200XC |
| 28802 | 2908100XC | 2908050XC |

COATED COMPONENT FEATURES

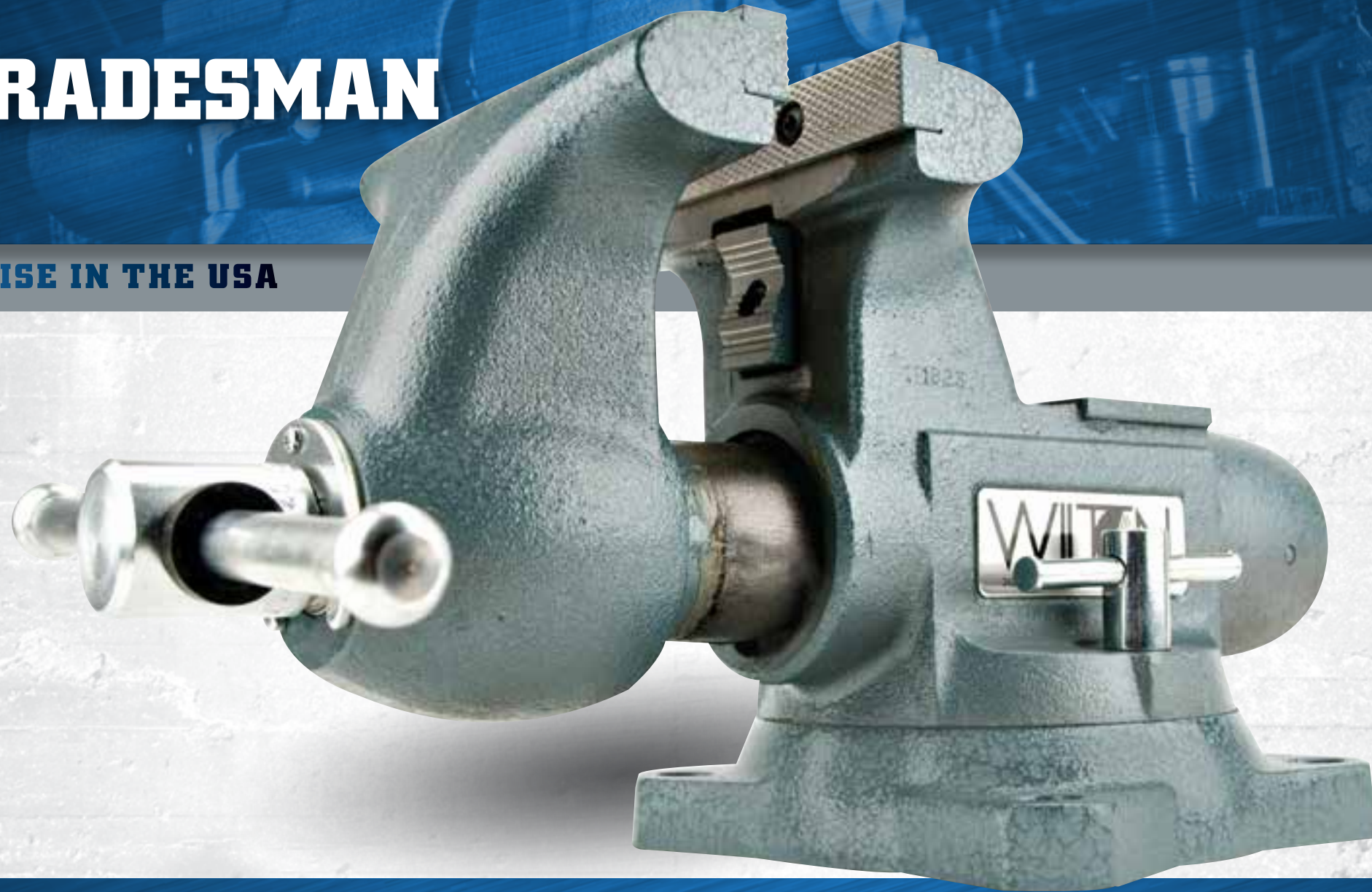
- A** JAW INSERTS
- B** PIPE JAWS
- C** SPINDLE AND CASING NUT
- D** BODY & SLIDE BAR
- E** OVERSIZED HANDLE



WILTON® TRADESMAN

#1 INDUSTRIAL BENCH VISE IN THE USA

**MADE IN
USA**



SEALED CONSTRUCTION



LARGE ANVIL



PRECISION SLIDE BAR



FEATURES

STEEL PIPE JAWS:

- Fixed jaws hold up to 3-1/2" pipe safely and securely
- Great for irregularly shaped objects

MAX JAW CAPACITY:

- Up to 7" jaw opening for jobs demanding maximum holding capacity

REVERSIBLE JAW INSERTS:

- Standard serrated jaws for extra grip or smooth to prevent marring on softer surfaces

IDEAL FOR

- Tradesmen
- Metal Fabrication
- Automotive
- Service and MRO
- Construction Sites
- Utility

| Stock No. | Model | Jaw Width (in.) | Jaw Opening (in.) | Throat Depth (in.) | Pipe Jaw Capacity (in.) | Net Weight (lbs.) |
|--------------------------------|-------|-----------------|-------------------|--------------------|-------------------------|-------------------|
| TRADESMAN – SWIVEL BASE | | | | | | |
| 63199 | 1745 | 4-1/2 | 4 | 3-1/4 | 1/4 – 2-1/2 | 42 |
| 63200 | 1755 | 5-1/2 | 5 | 3-3/4 | 1/4 – 3 | 52 |
| 63201 | 1765 | 6-1/2 | 6-1/2 | 4 | 1/4 – 3-1/2 | 71 |
| 63202 | 1780A | 8 | 7 | 4-3/4 | 1/8 – 3-1/2 | 111 |

| Stock No. | Replacement Jaw Insert Set No. | Replacement Pipe Jaw Insert Set No. |
|-----------|--------------------------------|-------------------------------------|
| 63199 | 2908060 | 2904200 |
| 63200 | 2908070 | 2904200 |
| 63201 | 2908080 | 2904200 |
| 63202 | 2908100 | 2908050 |

PEDESTAL BASE

BASE:

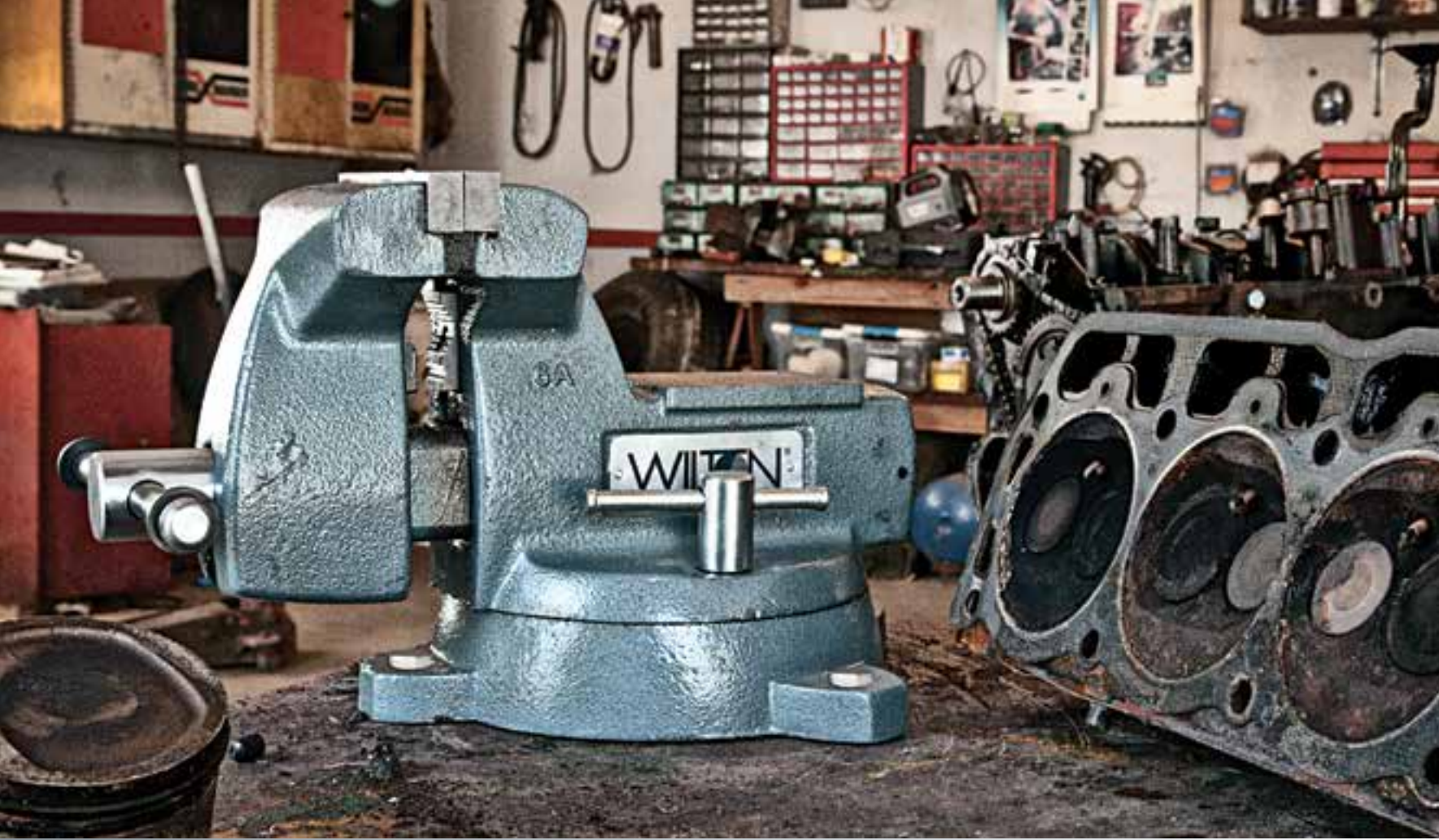
- 18" x 18" x 1/4", Top: 10-1/2" x 8-1/2" x 1/4"
- Great for irregularly shaped objects

PERFECT FOR:

- 1755 and 1765 Tradesman Swivel base models

| Stock No. | Model | Description | Ship Wt. (Lbs.) |
|--------------------------------|-------|---|-----------------|
| TRADESMAN PEDESTAL BASE | | | |
| 63185 | 159V | Steel Pedestal Base Fits Models 1755 and 1765 (33-1/2" Tall Base) | 55 |





INDUSTRIAL BENCH VISES

Wilton's expansive Industrial Bench Vise line ensures we have you covered in any industrial setting.



VERSATILE AND DEPENDABLE



MECHANICS

UTILITY

MULTI-PURPOSE

SPECIALTY

REVERSIBLE

SHOP

SUPER JUNIORS

JAW CAPS

WILTON[®] MECHANICS

BUILT FOR SERIOUS MECHANICS



**HARDENED STEEL JAWS
PIPE JAWS**



SEALED CONSTRUCTION

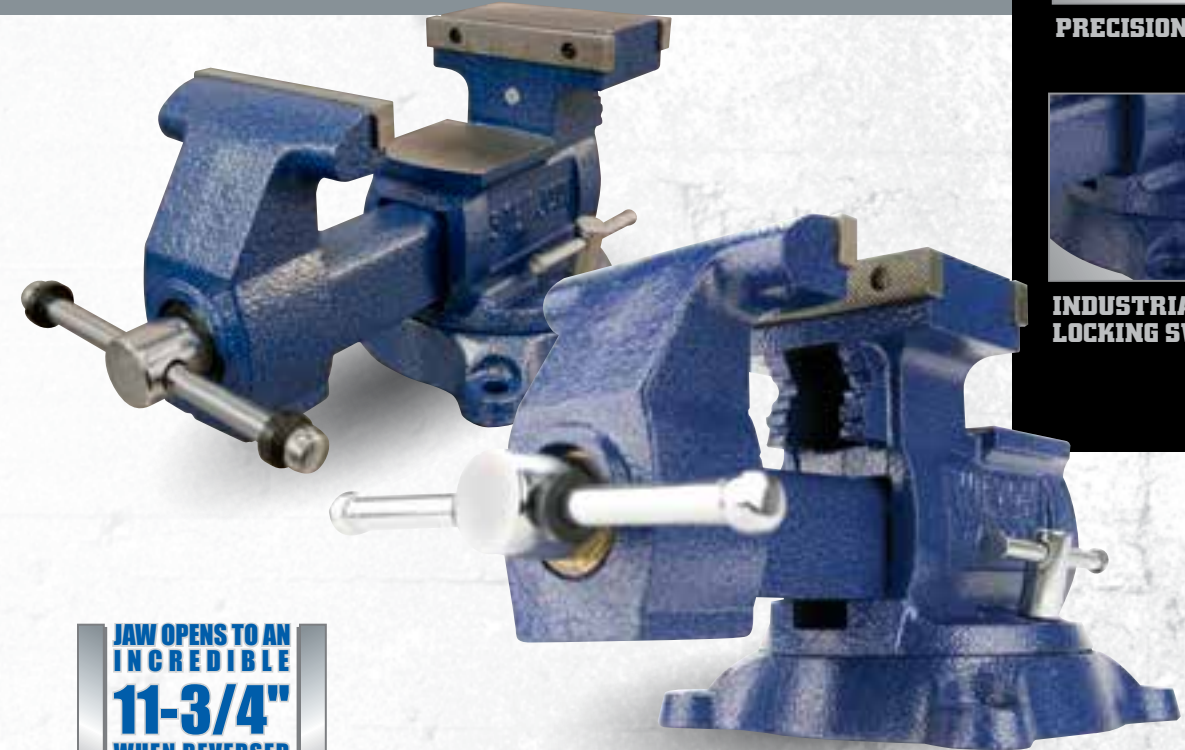


4 MOUNTING POSTS



WILTON[®] REVERSIBLE MECHANICS

VERSATILITY. REVERSABILITY



HARDENED STEEL JAWS



PRECISION SLIDE HANDLE



**INDUSTRIAL 360°
LOCKING SWIVEL BASE**



**JAW OPENS TO AN
INCREDIBLE
11-3/4"
WHEN REVERSED**

FEATURES

30,000 PSI IRON BODY:

- Heavy-Duty castings are built for rugged use and extended life

LIFETIME LUBRICATION:

- Grease is permanently sealed in for trouble-free service

HI-VISIBILITY YELLOW:

- Conforms to OSHA standards for Physical Hazards Regulation #1910.144

IDEAL FOR

- Professional Mechanics
- Automotive Maintenance
- Maintenance and Repair

| Stock No. | Model | Jaw Width (in.) | Maximum Opening (in.) | Throat Depth (in.) | Pipe Jaw Capacity (in.) | Weight (lbs.) |
|-------------------------------------|-------|-----------------|-----------------------|--------------------|-------------------------|---------------|
| 740 SERIES MECHANICS VISES | | | | | | |
| 21300 | 744 | 4 | 4-1/2 | 3-7/16 | 1/4 – 2 | 37 |
| 21400 | 745 | 5 | 5-1/4 | 3-3/4 | 1/4 – 2-1/2 | 46 |
| 21500 | 746 | 6 | 5-3/4 | 4-1/8 | 1/4 – 3-1/2 | 63 |
| 21800 | 748A | 8 | 8-1/4 | 4-3/4 | 1/4 – 3-1/2 | 81 |
| HIGH-VISIBILITY SAFETY VISES | | | | | | |
| 63187 | 1550 | 5 | 5-1/4 | 3-3/4 | 1/4 – 2-1/2 | 46 |
| 63188 | 1560 | 6 | 5-3/4 | 4-1/8 | 1/4 – 3-1/2 | 63 |

| Stock No. | Replacement Jaw Insert Set No. | Replacement Pipe Jaw Insert Set No. |
|-----------|--------------------------------|-------------------------------------|
| 21300 | 21300-03 | 21300-03 |
| 21400 | 2904110 | 2904110 |
| 21500 | 21500-03 | 21500-03 |
| 21800 | 21800-03 | 21800-03 |
| 63187 | 21400-03 | 21400-03 |
| 63188 | 21500-03 | 21500-03 |

FEATURES

30,000 PSI IRON BODY:

- Heavy-Duty castings are built for rugged use and extended life

PIPE JAWS:

- Built-In Steel Jaws Handle Pipe From 1/8" – 3"

DUAL ANVILS:

- Two working anvil surfaces for forming and shaping materials

HARDENED STEEL JAWS:

- Furnished with a serrated pattern to insure strength and long life

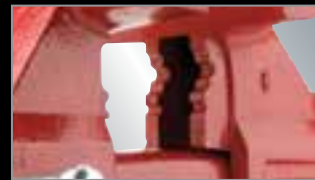
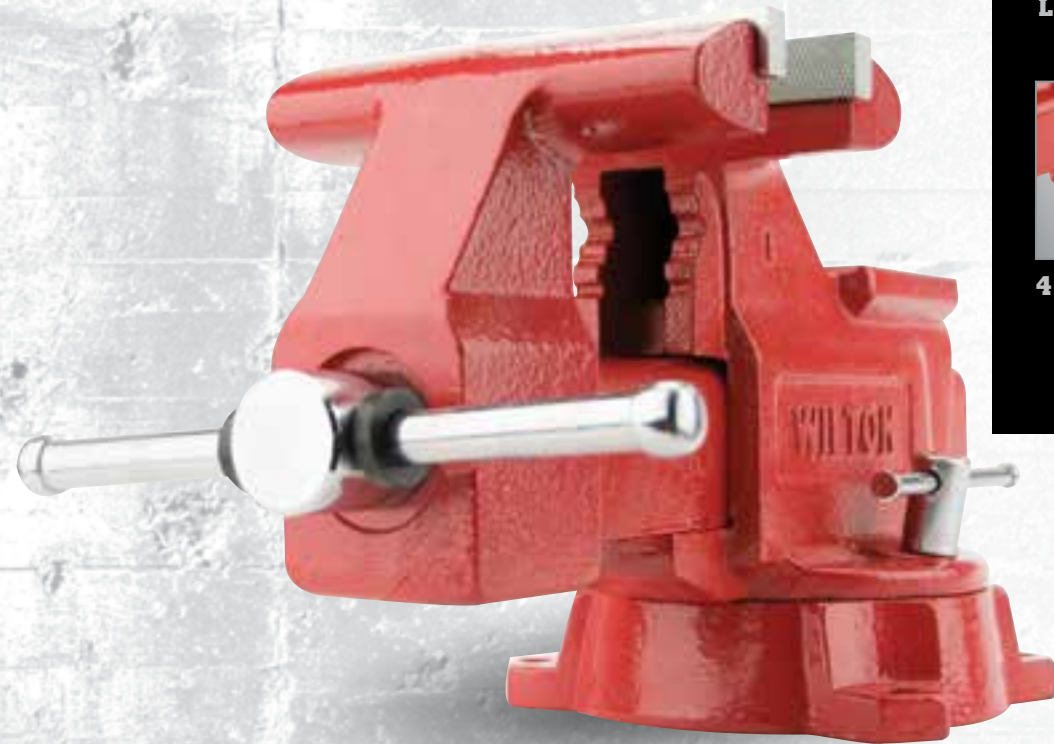
IDEAL FOR

- Professional Mechanics
- Automotive Maintenance
- Maintenance and Repair

| Stock No. | Model | Jaw Width (in.) | Maximum Opening Reversed (in.) | Throat Depth Reversed (in.) | Pipe Jaw Capacity (in.) | Replacement Jaw Insert No. | Net Weight (lbs.) |
|--|-------|-----------------|--------------------------------|-----------------------------|-------------------------|----------------------------|-------------------|
| REVERSIBLE MECHANICS VISE – SWIVEL BASE | | | | | | | |
| 14500 | 4500 | 5-1/2 | 6 / 9-3/4 | 3-3/4 / 2-3/4 | 1/4 – 2 | 14500S41 | 46 |
| 14600 | 4600 | 6-1/2 | 8 / 9-3/4 | 4 / 3 | 1/8 – 3-1/2 | 14600S03 | 52 |
| 14800 | 4800 | 8 | 9-1/2 / 11-3/4 | 5 / 2-3/4 | 1/8 – 4-1/2 | 14800S03 | 77 |

WILTON® UTILITY

IDEAL FOR ANY JOB



PIPE JAWS



LARGE ANVIL



4 MOUNTING POSTS



WILTON® SHOP

BUILT FOR YOUR WORKBENCH



PIPE JAWS



POLISHED ANVIL



4 MOUNTING POSTS



FEATURES

REPLACEABLE STEEL JAWS:

- Furnished with a serrated pattern to insure strength and long life

LARGE ANVIL:

- Designed to take a pounding while forming and shaping materials

180° LOCKING SWIVEL BASE:

- Single lockdown provides quick and easy positioning

| Stock No. | Model | Jaw Width (in.) | Maximum Opening (in.) | Throat Depth (in.) | Pipe Jaw Capacity (in.) | Replacement Jaw Insert No. | Net Weight (lbs.) |
|------------------------------------|-------|-----------------|-----------------------|--------------------|-------------------------|----------------------------|-------------------|
| UTILITY VISES – SWIVEL BASE | | | | | | | |
| 11126 | 674 | 4-1/2 | 4 | 2-5/8 | 1/8 – 2 | 76654S41 | 19 |
| 11127 | 675 | 5-1/2 | 5 | 3-1/4 | 1/8 – 2-1/2 | 11127S41 | 27 |
| 11128 | 676 | 6-1/2 | 5-1/2 | 3-13/16 | 1/8 – 2-1/2 | 11128S41 | 38 |
| 191 | 656HD | 6-1/4 | 6 | 4-3/8 | 1/8 – 3 | 11106S41 | 58 |
| 11800 | 648HD | 8 | 7-1/2 | 4-1/2 | 1/8 – 3 | 2904130 | 77 |

IDEAL FOR

- General Purpose
- Light Tradesman
- Utility and Service
- Automotive

FEATURES

HARDENED STEEL JAWS:

- Furnished with a serrated pattern to insure strength and long life

DOUBLE LOCK DOWNS:

- 2 Lockdowns for a sturdier base and less rotation

360° LOCKING SWIVEL BASE:

- 360° swivel ability for ideal positioning on workbench

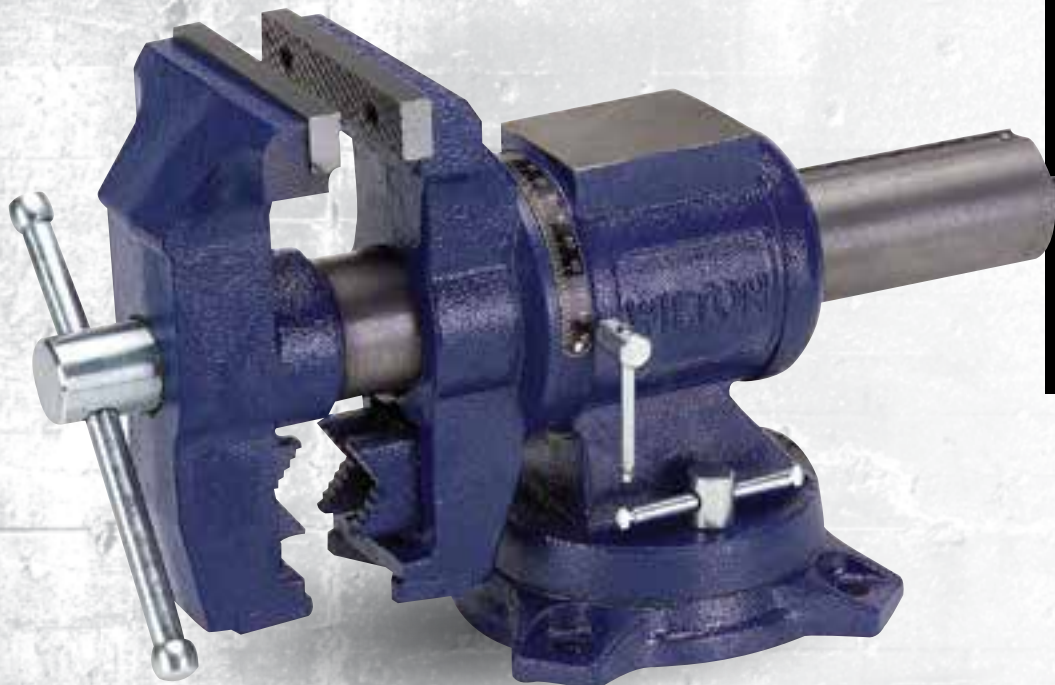
IDEAL FOR

- General Purpose
- Light Tradesman
- Utility and Service
- Automotive

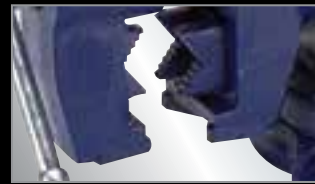
| Stock No. | Model | Jaw Width (in.) | Maximum Opening (in.) | Throat Depth (in.) | Pipe Jaw Capacity (in.) | Replacement Jaw Insert No. | Net Weight (lbs.) |
|---------------------------------|-------|-----------------|-----------------------|--------------------|-------------------------|----------------------------|-------------------|
| SHOP VISES – SWIVEL BASE | | | | | | | |
| 63300 | WS4 | 4 | 4 | 2-3/4 | 5/8" - 2" | 310041W | 20 |
| 63301 | WS5 | 5 | 5 | 3 | 5/8" - 2 3/8" | 310051W | 28 |
| 63302 | WS6 | 6 | 6 | 3-1/2 | 5/8" - 2 1/2" | 310061W | 42 |
| 63304 | WS8 | 8 | 8 | 4 | 3/4" - 3" | 310081W | 65 |

WILTON® MULTI-PURPOSE

360° JAW ROTATION



360° JAW ROTATION



PERMANENT PIPE JAWS



LARGE ANVIL



FEATURES

- ROTATING HEAD:**
 - Great for clamping material at any angle
- V-JAW:**
 - Holds 1" - 3" diameter round stock vertically
- INDEXING:**
 - 90° left and right for quick setup
- LARGE ANVIL:**
 - Built-in anvil for flat shaping

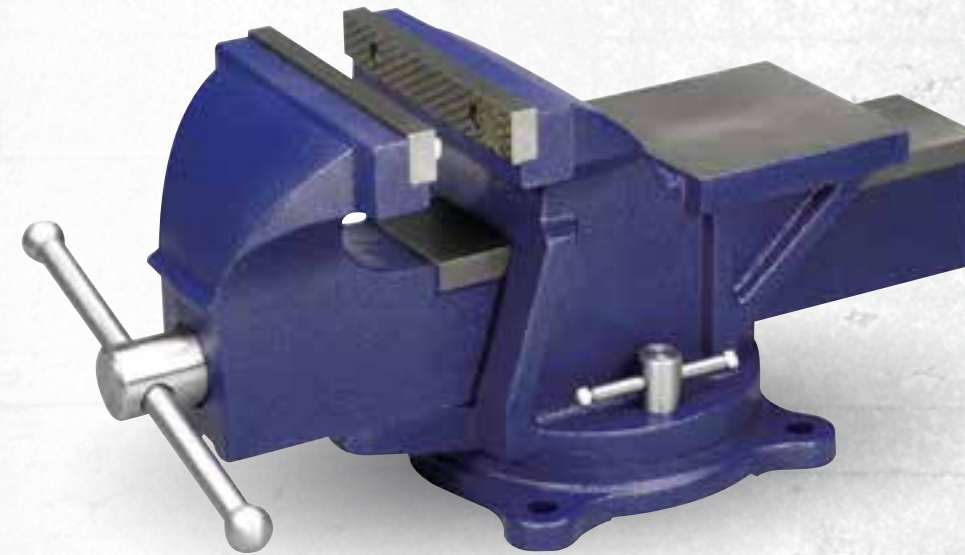
IDEAL FOR

- General Purpose
- Light Tradesman
- Utility and MRO

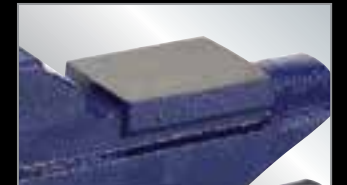
| Stock No. | Model | Jaw Width (in.) | Maximum Opening (in.) | Throat Depth (in.) | Pipe Jaw Capacity (in.) | Replacement Jaw Insert No. | Net Weight (lbs.) |
|--|-------|-----------------|-----------------------|--------------------|-------------------------|----------------------------|-------------------|
| MULTI-PURPOSE VISES – SWIVEL BASE | | | | | | | |
| 69999 | - | 5 | 5-1/4 | 3 | 3/8-3 | 69999S41 | 42 |

WILTON® GENERAL PURPOSE

WEEKEND WARRIOR



HIGH STRENGTH STEEL CONSTRUCTION



BUILT-IN ANVIL



DIAMOND SERRATED JAW FACES



FEATURES

- WISE BODY:**
 - Made from high strength steel
- JAW FACES:**
 - Diamond serrated for positive gripping
- BASE:**
 - Swivel base with double lock down
- ANVIL:**
 - Built-in anvil for flat shaping

IDEAL FOR

- Light Duty Use
- General Purpose
- Home Shop
- Weekend Projects

| Stock No. | Model | Jaw Width (in.) | Maximum Opening (in.) | Throat Depth (in.) | Pipe Jaw Capacity (in.) | Net Weight (lbs.) |
|------------------------|-------|-----------------|-----------------------|--------------------|-------------------------|-------------------|
| GENERAL PURPOSE | | | | | | |
| 11104 | - | 4 | 4 | 2-1/4 | - | 16 |
| 11105 | - | 5 | 5 | 2-1/2 | - | 27 |
| 11106 | - | 6 | 6 | 3 | - | 39 |

WILTON® SUPER JUNIORS

THE MINI BULLET



CLAMP-ON
BASE

SWIVEL BASE

NOTE:
• Clamp-On has 3" opening



BROAD ANVIL



LIGHTWEIGHT AND
PORTABLE

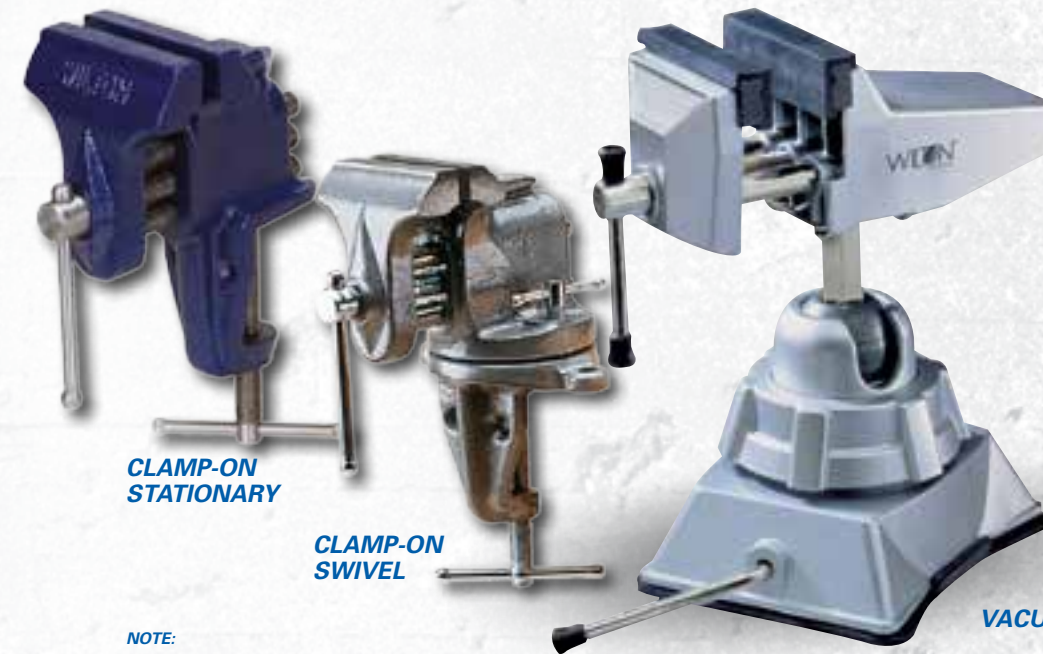


FULLY ENCLOSED DESIGN



WILTON® CLAMP-ON & VACUUM

FOR SMALLER PROJECTS



CLAMP-ON
STATIONARY

CLAMP-ON
SWIVEL

VACUUM

NOTE:
• Clamp-On Meets federal spec #GGG-V-410a



DOUBLE STEEL
GUIDE BARS



CAST JAWS



VACUUM BASE



FEATURES

STEEL TOP JAWS:

- Replaceable and grooved for strong holding action

45° LOCKING SWIVEL BASE:

- Double lockdowns for quick and easy positioning in any working position

IDEAL FOR

- General Purpose
- Light Tradesman
- Home Shop

| Stock No. | Model | Jaw Width (in.) | Jaw Opening (in.) | Throat Depth (in.) | Replacement Jaw Insert No. | Net Weight (lbs.) |
|--|---------|-----------------|-------------------|--------------------|----------------------------|-------------------|
| WILTON® SUPER-JUNIOR® – CLAMP-ON BASE | | | | | | |
| 63198 | CBV-65 | 2-1/2 | 2-1/8 | 1-3/4 | 2900270 | 11 |
| 63247 | CBV-100 | 4 | 2-1/4 | 2 | 2900300 | 18 |
| WILTON® SUPER-JUNIOR® – SWIVEL BASE | | | | | | |
| 63244 | SBV-65 | 2-1/2 | 2-1/8 | 1-3/4 | 2900270 | 9 |
| 63248 | SBV-100 | 4 | 2-1/4 | 2 | 2900300 | 14 |

FEATURES - Clamp-On

DOUBLE STEEL GUIDE BARS:

- Insures parallel alignment of pipe jaws for consistent holding pressure

CAST JAWS:

- Holds workpiece firmly

PORTABLE:

- Vise can quickly and easily be transferred to new work station

IDEAL FOR

- General Purpose
- Light Tradesman
- Woodworking

FEATURES - Vacuum

360° SWIVEL BASE AND 180° HEAD TILT:

- Can be used in a wide variety of working positions

SEAL VACUUM BASE:

- Secure base to any flat, clean and dry surface by pressing base to surface and pulling lock arm

CAST ALUMINUM BODY:

- Strong and durable

| Stock No. | Model | Jaw Width (in.) | Maximum Opening (in.) | Net Weight (lbs.) |
|--|-------|-----------------|-----------------------|-------------------|
| WILTON® CLAMP-ON VISE – STATIONARY BASE | | | | |
| 33150 | 150 | 3 | 2-1/2 | 4 |
| WILTON® CLAMP-ON VISE – SWIVEL BASE | | | | |
| 33153 | 153 | 3 | 2-1/2 | 6 |
| WILTON® VACUUM VISE | | | | |
| 63500 | 3VB | 2-3/4 | 2-1/2 | 3 |

WILTON® WOODWORKING

WOODWORKING MADE TOUGH



Replaceable Magnetic Maple Jaw Inserts

LIGHT-DUTY WOODWORKING



SELF CENTERING JAW



REPLACEABLE MAPLE JAW INSERTS



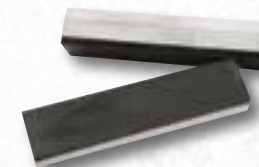
STURDY STEEL HANDLE

BENCH VISE ACCESSORIES



MODEL P-PRISM MAGNEFIX JAW CAPS

- Aluminum alloy with synthetic rubber cover
- Jaw construction includes a 120° horizontal V-groove, three vertical V-grooves and a 90° groove for marking out and center punching
- Ideal for light tapping and thread cutting



MODEL A-ALUMINUM MAGNEFIX JAW CAPS

- Aluminum alloy design includes six grooves to compensate for the unevenness of the workpiece
- Deeper V-groove ensures more secure clamping of circular workpieces
- Use together with rubber magnefix jaw caps



MODEL F-FIBER FACE MAGNEFIX JAW CAPS

- Aluminum alloy with laminated fiber cover to prevent the absorption of outside materials
- Heat parts rapidly by concentrating heat into part
- Use on workpieces to avoid distortion and clamping marks



MODEL R-RUBBER FACE MAGNEFIX JAW CAPS

- Aluminum alloy with synthetic rubber cover
- Jaw cap conforms to workpiece and grips firmly without slipping while protecting work surface
- Use in combination with aluminum and prism jaw caps to clamp taper pins or tapered workpieces

COPPER JAW CAPS

- Designed to avoid marring the surface of materials
- 100% copper jaw caps have polished faces and pliable copper extensions for a sure-grip fit

MULTI-GRIP VISE JAWS

- Soft polyurethane jaws designed to avoid marring the surface of softer metals and to protect jaw face
- Designed to fit any 3" – 6" vise jaws, including all WILTON® and Columbian® vises
- Magnetic back mounts securely to jaw
- Great for holding wood, metal and tubing
- One size fits all

WOODWORKING FEATURES

SELF CENTERING JAW:

- Ensure a strong hold on all workpieces no matter what the shape

FRONT JAW:

- Pivots 10° to allow for irregular shaped parts

PIVOT JAW:

- Can be removed for wider clamping requirements

IDEAL FOR

- Woodworking
- Light Tradesman

LIGHT-DUTY FEATURES

HIGH-TENSILE IRON JAWS:

- Provide strength and durability

LIGHTWEIGHT DESIGN:

- Perfect for home craftsmen

COLD ROLLED STEEL GUIDE BARS:

- Offer strength and integrity to the tool

| Stock No. | Model | Jaw Width (in.) | Jaw Opening (in.) | Type of Nut | Replacement Jaw Insert No. | Net Weight (lbs.) |
|------------------------------------|-------|-----------------|-------------------|-------------|----------------------------|-------------------|
| WOODWORKING VISES | | | | | | |
| 63144 | 78A | 4 x 7 | 10 | Rapid | 63142 | 32 |
| 63218 | 79A | 4 x 10 | 13 | Rapid | 63143 | 36 |
| LIGHT-DUTY WOODWORKING VISE | | | | | | |
| 33176 | 176 | 6-1/2 | 4-1/2 | - | - | 6 |

| Stock No. | Model | Jaw Width (in.) | Net Weight (lbs.) |
|----------------------------|-------|-----------------|-------------------|
| MODEL P-PRISM | | | |
| 14846 | P-4 | 4 | 1 |
| 14847 | P-4.5 | 4-1/2 | 1 |
| 14848 | P-5 | 5 | 1 |
| 14873 | P-5.5 | 5-1/2 | 1 |
| 14849 | P-6 | 6 | 1 |
| 14876 | P-6.5 | 6-1/2 | 1 |
| MODEL R-RUBBER FACE | | | |
| 14838 | R-3 | 3 | 1 |
| 14840 | R-4 | 4 | 1 |
| 14841 | R-4.5 | 4-1/2 | 1 |
| 14842 | R-5 | 5 | 1 |
| 14872 | R-5.5 | 5-1/2 | 1 |
| 14843 | R-6 | 6 | 1 |
| 14875 | R-6.5 | 6-1/2 | 1 |

| Stock No. | Model | Jaw Width (in.) | Net Weight (lbs.) |
|-------------------------|-----------|-----------------|-------------------|
| MODEL A-ALUMINUM | | | |
| 14828 | A-4 | 4 | 1 |
| 14829 | A-4.5 | 4-1/2 | 1 |
| 14830 | A-5 | 5 | 1 |
| 14871 | A-5.5 | 5-1/2 | 1 |
| 14831 | A-6 | 6 | 1 |
| 14874 | A-6.5 | 6-1/2 | 1 |
| COPPER JAW CAPS | | | |
| 24403 | 404-3 | 3 | 1 |
| 24404 | 404-3-1/2 | 3-1/2 | 1 |
| 24405 | 404-4 | 4 | 1 |
| 24406 | 404-4-1/2 | 4-1/2 | 1 |
| 24407 | 404-5 | 5 | 1 |
| 63203 | 404-5-1/2 | 5-1/2 | 2 |
| 24408 | 404-6 | 6 | 2 |
| 63204 | 404-6-1/2 | 6-1/2 | 3 |
| 24409 | 404-8 | 8 | 4 |

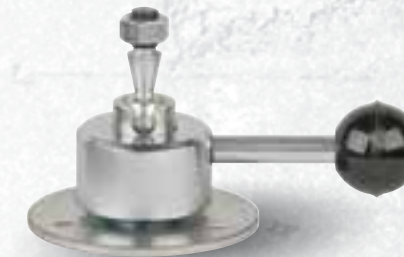
| Stock No. | Model | Jaw Width (in.) | Net Weight (lbs.) |
|-----------------------------|-------|-----------------|-------------------|
| MODEL F-FIBER FACE | | | |
| 14834 | F-4 | 4 | 1 |
| 14835 | F-4.5 | 4-1/2 | 1 |
| 14836 | F-5 | 5 | 1 |
| 14837 | F-6 | 6 | 1 |
| MULTI-GRIP VISE JAWS | | | |
| 21111 | 21111 | 5-1/2 | 1 |



WILTON® POW-R-ARMS

**MADE IN
USA**

WORKHOLDING SUPPORT FOR PRODUCTION LINES



POW-R-ARM™ MECHANICAL NO. 301

- Extra-strong, positioner with exceptionally fast on-off action, the 301 is designed for high production assembly line applications.
- Body is machined cast iron with all steel parts
- Two mounting holes at top (5/16-18) are 1" apart

POW-R-ARM™ HYDRAULIC NO. 303

- Same size and strength as Model 301 with hydraulic locking action
- Rated for heavy-duty assembly, welding, maintenance and tool room work
- Hydraulic system is hand operated, self-contained and sealed with replaceable cups
- Two mounting holes at top (5/16-18) holes 1" apart

POW-R-ARM™ JUNIOR NO. 343

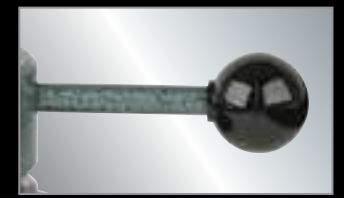
- Fast on-off action with horizontal-moving lock handle
- Body is cast aluminum with steel parts
- 3" diameter mounting pad with two 1/4 - 20 holes
- 180° apart. Four slotted equally spaced 9/32" diameter mounting holes

POW-R-ARM™ VEEP NO. 344

- Design provides more work-holding capacity and faster on-off action
- Horizontal handle is easily accessible and dwells below level of work
- Steel body is cadmium plated with cast iron base
- Mounting hole at top is 1/2" diameter x 1/2" deep with set screw to hold a fixture
- Four 1/4" diameter equally spaced slotted mounting holes
- For light production assembly or electronic applications

POW-R-ARM™ MIDGET NO. 345

- Recommended for intricate electronic work including small printed circuits.
- Fast on/off action with horizontal handle
- All steel parts
- Mounting stud at top is 5/16-24 x 15/32" long



ERGONOMIC HANDLES



MACHINED STEEL PARTS



CAST IRON & ALUMINUM
BODY CONSTRUCTION



IDEAL FOR

- Production Environments
- Assembly Lines
- Intricate Work
- Fab Shops
- Electronic MRO



POW-R-ARMS have been popular in production lines for decades. Seen here in use at Burroughs Corporation, circa 1956.

| Stock No. | Model | Workholding Capacity (lbs.) | Base Diameter (in.) | Diameter Bolt Circle (in.) | Extended Height (in.) | Net Weight (lbs.) |
|-------------------------------------|-------|-----------------------------|---------------------|----------------------------|-----------------------|-------------------|
| POW-R-ARM MECHANICAL NO. 301 | | | | | | |
| 16240 | 301 | 70 | 5-15/16 | 5 | 10-1/2 | 14 |
| POW-R-ARM HYDRAULIC NO. 303 | | | | | | |
| 16300 | 303 | 150 | 5-7/8 | 5 | 10-1/2 | 15 |
| POW-R-ARM JUNIOR NO. 343 | | | | | | |
| 16180 | 343 | 30 | 4-1/4 | 2-1/4 | 5 | 4 |
| POW-R-ARM VEEP NO. 344 | | | | | | |
| 16120 | 344 | 20 | 3-3/4 | 3-3/8 | 4-1/4 | 3 |
| POW-R-ARM MIDGET NO. 345 | | | | | | |
| 16060 | 345 | 6 | 2-1/2 | 1-7/8 | 1-1/4 | 1 |



MOUNTS TO YOUR TRUCK
FITS STANDARD 2" HITCH



MOUNTS TO YOUR BENCH
MOUNTING BRACKET INCLUDED WITH 6" ATV

TRUCK HITCH VISE

YOUR TRUCK JUST GOT ONE HELL OF AN UPGRADE

Some jobs go beyond the workshop. Some jobs make you come to them. For the jobs that demand function, strength and mobility, we present the ATV All-Terrain Vise.



5" ATV®



6" ATV®



6" ATV® WITH CARRYING CASE



ATV® ACCESSORIES

ATV® ALL-TERRAIN VISE

SECURE IT IN YOUR HITCH OR MOUNT IT ON YOUR BENCH



6" ATV WITH CARRYING CASE



6" ATV



5" ATV



MOUNTING BRACKET (INCLUDED WITH 6" ATV)



FITS 2" HITCH, HITCH PIN INCLUDED



LARGE STRIKING ANVIL



360° LOCKING HANDLE



DRIVE TIGHT SET SCREWS



CARRYING HANDLE SCREWS



FEATURES

DRIVE TIGHT SET SCREWS:

- Patented set screws adjust to provide a tight fit in the hitch and reduce vibration while driving

360 LOCKING HANDLE

- Secures the handle while driving or repositions it while working

PIPE JAWS:

- Pipe jaws clamp round objects up to 3"

REPLACEABLE JAWS:

- Include a V-groove for verticle clamping of round objects

LARGE ANVIL:

- Large striking anvil for forming and shaping materials.

MOUNTING BRACKET

- Can be mounted on a bench or trailer for even greater versatility
- Included with 6" ATV (SKUs 10010 and 10015)

IDEAL FOR

- Construction
- Automotive
- Farm and ranch
- Off roaders



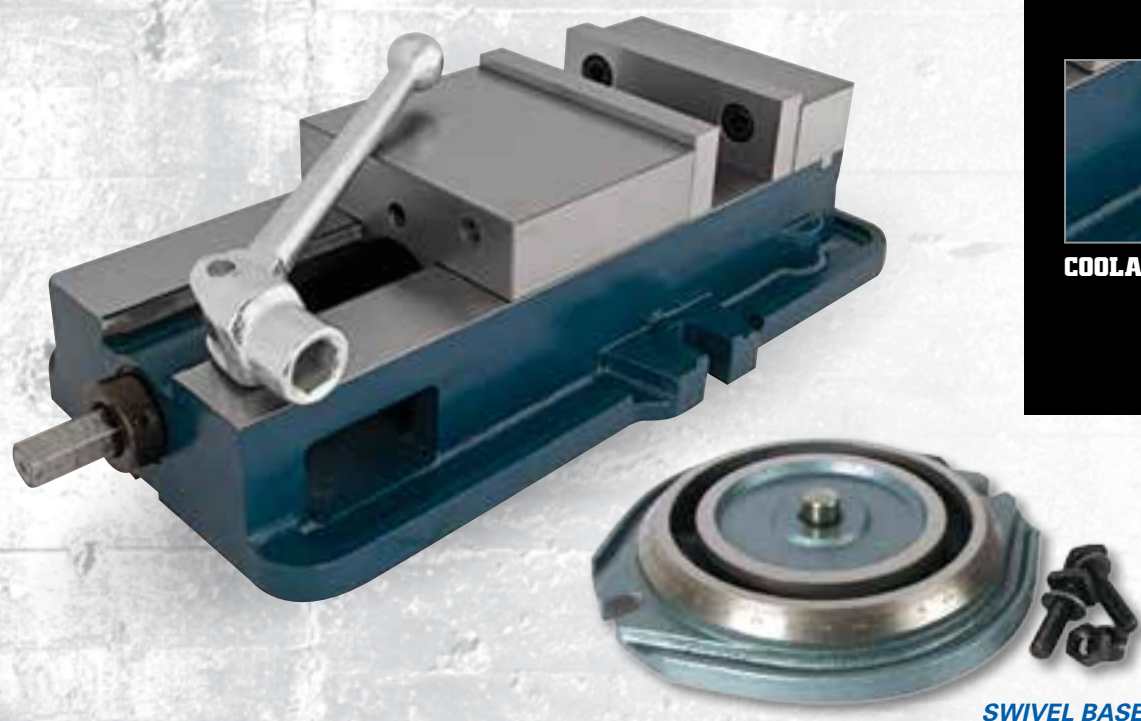
| Stock No. | Jaw Width (in.) | Maximum Opening (in.) | Throat Depth (in.) | Pipe Jaw Capacity (in.) | Net Weight (lbs.) |
|---|-------------------|-----------------------|--------------------|-------------------------|-------------------|
| ATV® – ALL-TERRAIN VISE | | | | | |
| 10025 | 5 | 6 | 4-1/4 | 7/8-3 | 25-1/2 |
| 10010 | 6 | 5-3/4 | 5 | 3/4-3 | 34 |
| ATV® – ALL-TERRAIN VISE WITH CARRYING CASE | | | | | |
| 10015 | 6 | 5-3/4 | 5 | 3/4-3 | 44 |
| ATV® – ACCESSORIES* | | | | | |
| 10055 | 10" Riser | | | | 5 |
| 10065 | Locking Hitch Pin | | | | 1 |
| 10300 | Mounting Bracket | | | | 6 |
| 10350 | Carrying Case | | | | 10 |

* Accessories fit both sizes of ATV



VERTI-LOCK[®] MILLING MACHINE VISE

ACCURATE, SOLID & TRUE



FLAME HARDENED BED



HARDENED JAWS



COOLANT DRAIN



SWIVEL BASE

COMMON FEATURES

WISE BODY:

- The ductile alloy vise body with flame-hardened bed provides solid work support, accuracy, and longevity

WISE JAWS:

- The fixed jaw is rated at 85,000 PSI and the annealed, surface ground sliding jaw at 70,000 PSI

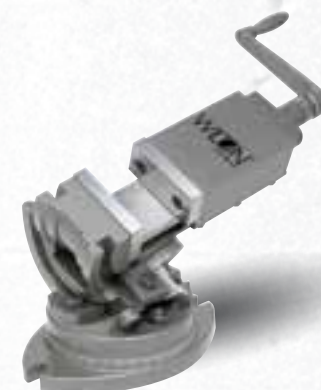
SPINDLE:

- Fully enclosed spindle is protected from milling elements
- Cut from special alloy steel, hardened and ground

| Stock No. | Model | Jaw Width (in.) | Jaw Depth (in.) | Jaw Opening (in.) | Net Weight (lbs.) |
|---------------------------|-------|-----------------|-----------------|-------------------|-------------------|
| STANDARD VISE ONLY | | | | | |
| 12390 | 1250N | 5 | 1-7/16 | 4-1/2 | 50 |
| 63186 | 1275N | 6 | 1-3/4 | 7-1/2 | 75 |
| 12375 | 1280N | 8 | 2-1/4 | 7-1/2 | 164 |
| SWIVEL BASE ONLY | | | | | |
| 12285 | 5S | 5 | - | - | 20 |
| 12290 | 6S | 6 | - | - | 26 |
| 12295 | 8S | 8 | - | - | 48 |

SUPER PRECISION MACHINE VISES

ANGULAR & SELF CENTERING PRECISION



SUPER PRECISION 3-AXIS TILTING

- Perfect vise for 3-axis jobs in milling, drilling, grinding, shaping and jig boring
- Vise bodies are constructed of close grained, high tensile, seasoned alloy castings
- Ergonomically designed all steel handle with spring loaded ball attachment
- Durable polychromatic finish
- Hardness of Jaws 55 ± 3HRC



SUPER PRECISION 2-AXIS ANGULAR

- Perfect vise for applications where the workpiece requires machining on an angle
- Vise bodies are constructed of close grained, high tensile, seasoned alloy castings
- All ground surfaces made to close tolerances
- Ergonomically designed all steel handle with spring loaded ball attachment
- Hardness of Jaws 55 ± 3HRC



SUPER PRECISION SELF CENTERING

- Very convenient for use with drilling and milling machines where quick centering is required
- Allows for accurate centering of jobs automatically
- Special design allows accurate setting up of jobs with only a single machine setting

| Stock No. | Model | Jaw Width (in.) | Jaw Depth (in.) | Jaw Opening (in.) | Net Weight (lbs.) |
|---------------------------------------|------------|-----------------|-----------------|-------------------|-------------------|
| SUPER PRECISION 3-AXIS TILTING | | | | | |
| 11700 | TLT/SP-50 | 2 | 1 | 2 | 10 |
| 11701 | TLT/SP-75 | 3 | 1-5/16 | 3 | 26 |
| 11702 | TLT/SP-100 | 4 | 1-1/2 | 4 | 52 |
| 11803 | TLT/SP-125 | 5 | 1-3/4 | 5 | 84 |
| 11804 | TLT/SP-150 | 6 | 1-3/4 | 6 | 119 |

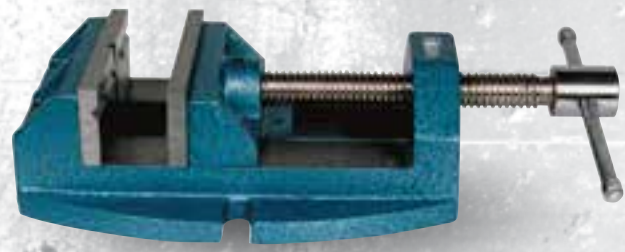
| Stock No. | Model | Jaw Width (in.) | Jaw Depth (in.) | Jaw Opening (in.) | Net Weight (lbs.) |
|---------------------------------------|------------|-----------------|-----------------|-------------------|-------------------|
| SUPER PRECISION 2-AXIS TILTING | | | | | |
| 11703 | AMV/SP-50 | 2 | 15/16 | 2 | 8 |
| 11704 | AMV/SP-75 | 3 | 1-5/16 | 3 | 22 |
| 11705 | AMV/SP-100 | 4 | 1-9/16 | 4 | 43 |
| 11706 | AMV/SP-125 | 5 | 2 | 5 | 74 |
| 11707 | AMV/SP-150 | 6 | 2 | 6 | 101 |

| Stock No. | Model | Jaw Width (in.) | Jaw Depth (in.) | Jaw Opening (in.) | Net Weight (lbs.) |
|--|------------|-----------------|-----------------|-------------------|-------------------|
| SUPER PRECISION SELF CENTERING VISE | | | | | |
| 11713 | SCV/SP-100 | 4 | 1-1/2 | 4 | 34 |



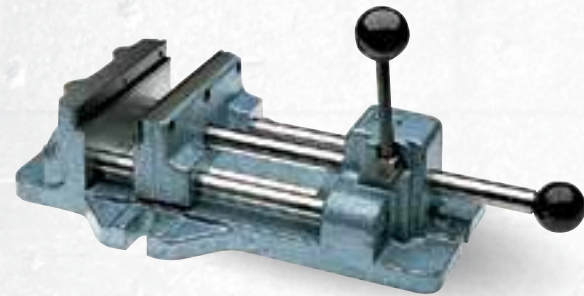
DRILL PRESS VISES

VERSATILITY AND SPEED



VERSATILE DRILL PRESS VISES

- Rapid acting nut disengages spindle for quick adjustments
- Made from high grade cast iron
- Ground vise bed for smooth, consistent jaw movement
- Hardened top V-groove jaws
- Rugged design and large workload capacity

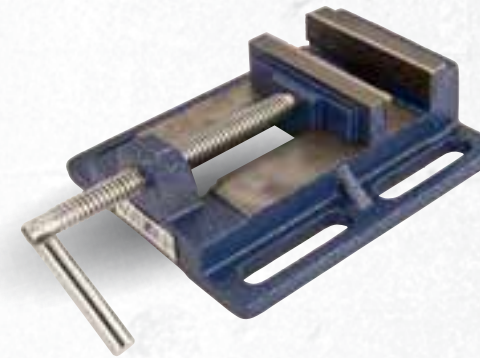


CAM ACTION DRILL PRESS VISES

- Simple push or pull on the center bar knob sets the jaw in position
- Easy press locking lever cams the jaw ahead 3/32", exerting a holding pressure that is adjustable from 400 to 1100 lbs.
- Base is designed for clear through drilling applications
- Unique top locking lever can be raised or lowered to tighten or loosen against the work piece.

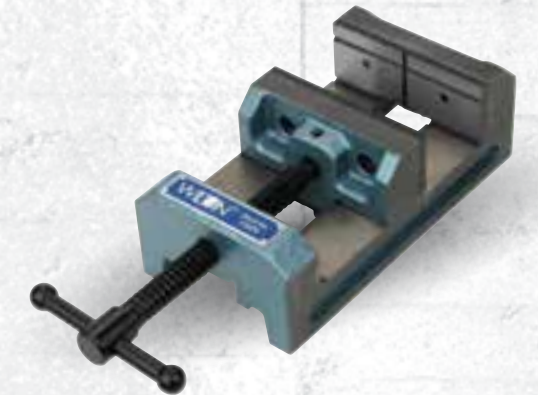
DRILL PRESS VISES

GENERAL PURPOSE



STANDARD DRILL PRESS VISE

- 4" Jaw width opens to a maximum of 4-1/2"
- Grooved jaws provide a firm, secure grip on your work material
- Elongated holes for easy fastening onto drill presses or work surfaces



INDUSTRIAL DRILL PRESS VISES

- Designed for applications including drilling, tapping, reaming and grinding
- Durable base has bolt lugs for easy mounting on a machine table
- Hardened V Grooved Jaws hold round shaped objects both vertically and horizontally
- Zinc plated fine threaded screw provides smooth clamping action

| Stock No. | Model | Jaw Width (in.) | Jaw Opening (in.) | Jaw Depth (in.) | Net Weight (lbs.) |
|-------------------------------------|-------|-----------------|-------------------|-----------------|-------------------|
| VERSATILE – CONTINUOUS NUT | | | | | |
| 63238 | 1335 | 3 | 2-3/4 | 1-7/8 | 6 |
| 63239 | 1345 | 4 | 4 | 2-1/8 | 12 |
| 63240 | 1360 | 5 | 5 | 2-1/8 | 20 |
| VERSATILE – RAPID ACTING NUT | | | | | |
| 63242 | 1445 | 4-1/2 | 4-3/4 | 1-7/8 | 15 |
| 63243 | 1460 | 6 | 6-3/4 | 2-1/8 | 29 |

| Stock No. | Model | Jaw Width (in.) | Jaw Opening (in.) | Jaw Depth (in.) | Net Weight (lbs.) |
|-------------------|-------|-----------------|-------------------|-----------------|-------------------|
| CAM ACTION | | | | | |
| 13400 | 1203 | 3 | 3 | 1-1/4 | 10 |
| 13401 | 1204 | 4 | 4-11/16 | 1-5/16 | 18 |
| 13402 | 1206 | 6 | 6-3/16 | 1-13/16 | 35 |
| 13403 | 1208 | 8 | 8-3/16 | 2 | 53 |

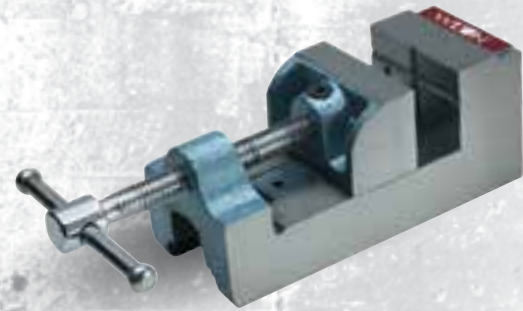
| Stock No. | Model | Jaw Width (in.) | Jaw Opening (in.) | Jaw Depth (in.) | Replacement Jaw Insert No. | Net Weight (lbs.) |
|----------------------------------|-------|-----------------|-------------------|-----------------|----------------------------|-------------------|
| STANDARD DRILL PRESS VISE | | | | | | |
| 69997 | 1203 | 4 | 4-1/2 | 1-1/2 | - | 7 |

| Stock No. | Model | Jaw Width (in.) | Jaw Opening (in.) | Jaw Depth (in.) | Replacement Jaw Insert No. | Net Weight (lbs.) |
|-------------------------------------|-------|-----------------|-------------------|-----------------|----------------------------|-------------------|
| INDUSTRIAL DRILL PRESS VISES | | | | | | |
| 11674 | DI44 | 4 | 4 | 1-1/2 | 11674-01 | 10 |
| 11676 | DI66 | 6 | 6 | 2 | 11676-01 | 35 |



DRILL PRESS VISES

GENERAL PURPOSE



STANDARD THREE-SIDED DRILL PRESS VISES

- Precision grinding of sides and front side face permits additional mounting positions for drilling, tapping or reaming
- Combining a smooth moveable jaw plate with a cross-patterned 90° V groove stationary jaw.
- The vise is recommended for general use.



LOW PROFILE DRILL PRESS VISES

- Designed for applications including drilling, tapping and reaming
- Low profile clearance for increased working room on machine table
- Hardened V Grooved Jaws hold round shaped objects both vertically and horizontally
- Durable construction with fine grain cast iron castings and hardened steel vise jaws
- Black oxide coated ACME threaded screw provides consistent clamping pressure
- Highly accurate with beds and bases parallel to $\pm .001"$

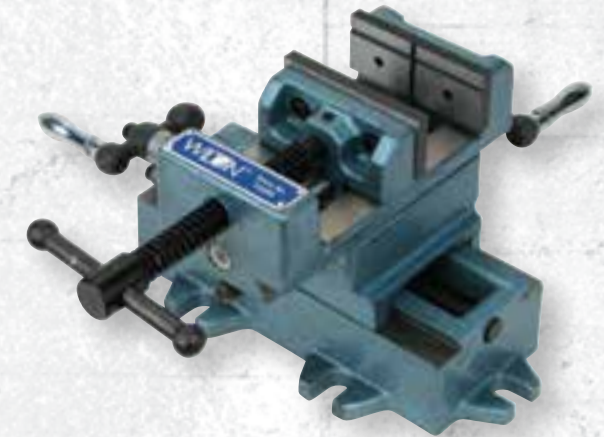
DRILL PRESS VISES

PRECISE ANGLED DRILLING



CRADLE STYLE ANGLE DRILL PRESS VISE

- Designed for applications including drilling, tapping and reaming requiring angle setup
- Cradle design with 90° vertical indexing, scaled in 1° increments
- Side tommy bar allows secure locking at any increment from 0° - 90°
- Pin hard stops at 0°, 15°, 30°, 45°, 60°, 75° and 90° for common applications
- Durable construction with fine grain cast iron castings and hardened smooth vise jaws



CROSS SLIDE DRILL PRESS VISES

- Accurately moves your workpiece horizontal and longitudinal for precise positioning
- Cast side knobs accurately dial in .1mm increments
- Hardened V Grooved Jaws hold round shaped objects both vertically and horizontally
- Durable construction with fine grain cast iron castings
- Black oxide coated screw provides consistent clamping pressure
- Durable base has 5 bolt lugs for easy mounting on a machine table

| Stock No. | Model | Jaw Width (in.) | Jaw Opening (in.) | Jaw Depth (in.) | Net Weight (lbs.) |
|---|-------|-----------------|-------------------|-----------------|-------------------|
| STANDARD THREE-SIDED DRILL PRESS VISES | | | | | |
| 12800 | 25 | 2-1/2 | 2-9/16 | 1-1/2 | 6 |
| 12860 | 30 | 3 | 3-1/8 | 1-3/4 | 10 |

| Stock No. | Model | Jaw Width (in.) | Jaw Opening (in.) | Jaw Depth (in.) | Replacement Jaw Insert No. | Net Weight (lbs.) |
|--------------------------------------|-------|-----------------|-------------------|-----------------|----------------------------|-------------------|
| LOW PROFILE DRILL PRESS VISES | | | | | | |
| 11743 | LP3 | 3 | 3 | 1-1/8 | 11743-01 | 8 |
| 11744 | LP4 | 4 | 4 | 1-1/2 | 11744-01 | 12 |
| 11746 | LP6 | 6 | 6 | 2 | 11746-01 | 30 |
| 11748 | LP8 | 8 | 8 | 2 | 11748-01 | 50 |

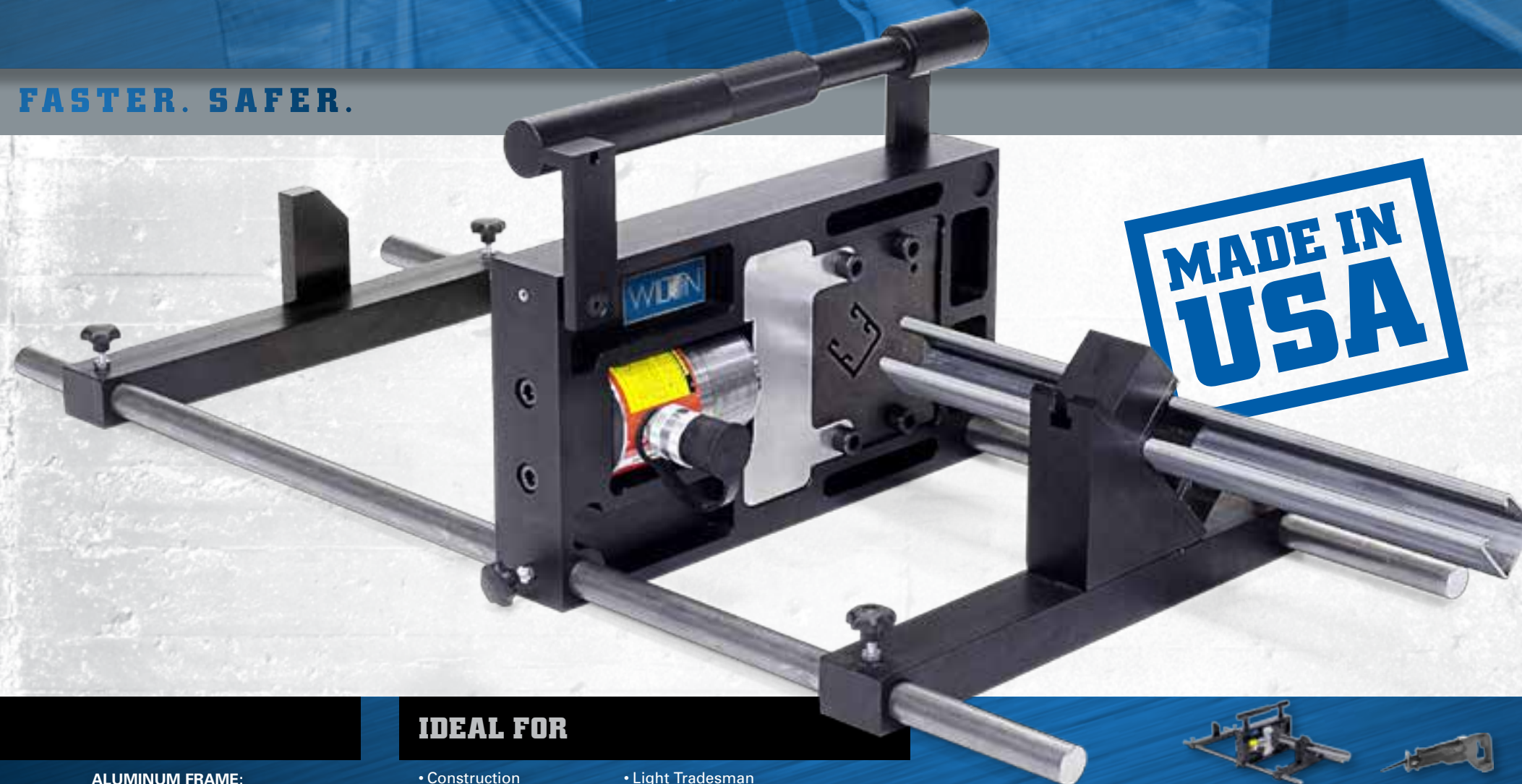
| Stock No. | Model | Jaw Width (in.) | Jaw Opening (in.) | Jaw Depth (in.) | Replacement Jaw Insert No. | Net Weight (lbs.) |
|--|-------|-----------------|-------------------|-----------------|----------------------------|-------------------|
| CRADLE STYLE ANGLE DRILL PRESS VISE | | | | | | |
| 11753 | CR3 | 4 | 3 | 1-1/8 | 11753-01 | 12 |
| 11754 | CR4 | 6 | 4 | 1-1/2 | 11754-01 | 17 |

| Stock No. | Model | Jaw Width (in.) | Jaw Opening (in.) | Jaw Depth (in.) | X-Travel (in.) | Y-Travel (in.) | Replacement Jaw Insert No. | Net Weight (lbs.) |
|--------------------------------------|-------|-----------------|-------------------|-----------------|----------------|----------------|----------------------------|-------------------|
| CROSS SLIDE DRILL PRESS VISES | | | | | | | | |
| 11693 | CS3 | 3 | 3 | 1-1/8 | 4-9/10 | 4-9/10 | 11693-01 | 16 |
| 11694 | CS4 | 4 | 4 | 1-3/8 | 4-9/10 | 4-9/10 | 11694-01 | 20 |
| 11695 | CS5 | 5 | 5 | 1-1/2 | 5-9/10 | 5-9/10 | 11695-01 | 45 |
| 11696 | CS6 | 6 | 6 | 2 | 7-9/10 | 7-9/10 | 11696-01 | 59 |
| 11698 | CS8 | 8 | 8 | 2 | 7-9/10 | 7-9/10 | 11698-01 | 77 |



STRUT CUTTER

CLEANER. FASTER. SAFER.



BACK GUAGE



COLLAPSIBLE HANDLE



25 TON HYDRAULIC CYLINDER



ALUMINUM FRAME

FEATURES

BACK GUAGE:

- Adjustable back guage allows for quick production shearing for uniform lengths

COLLAPSIBLE HANDLE SYSTEM:

- The collapsible handle provides easy movement on the job site
- Handle doubles as support legs

25 TON HYDRAULIC CYLINDER:

- Compact and powerful, the 25 ton cylinder easily pushes through any production job
- The quick-couple connects to any 10,000 psi power supply

ALUMINUM FRAME:

- The Wilton Strut Cutter's 7075-T651 precision-machined, anodized aluminum frame is durable enough to last a lifetime

CUTTING DIES:

- EDM profiled, heat-treated S7 tool steel dies are available in standard and custom profiles
- Make thousands of cuts with no waste and no post-cut processing
- Custom profiles available.

MATERIAL REST:

- Hold any strut securely with the adjustable machined material rest

IDEAL FOR

- Construction
- Production Environments
- Fab Shops
- Light Tradesman
- Maintenance and Repair

| Stock No. | Product Description |
|---|--|
| WILTON® STRUT CUTTER ACCESSORIES | |
| ESP1105 | Wilton Strut Cutter Power Kit |
| ESP1110 | Wilton Strut Cutter Starter Pack |
| ESP1159 | Wilton Strut Cutter Standard Blade Set |
| ESP1159-1 | Wilton Strut Cutter Custom Blade Set |
| ESP1160 | Wilton Strut Cutter Blade Set B-Line B22 and B52 |
| ESP1161 | Wilton Strut Cutter Blade Set B-Line 4Dimension 4D21 |
| ESP1162 | Wilton Strut Cutter Blade Set B-Line 4Dimension 4D22 |
| ESP1163 | Wilton Strut Cutter Material Rest Assembly |



| | Wilton Strut Cutter | Reciprocating Saw | Abrasive Saw | Portaband Saw | Metal Cutting Saw |
|----------------|---------------------|-------------------|--------------|---------------|-------------------|
| Cutting Cycle | 3 seconds | 70 seconds | 29 seconds | 28 seconds | 7 seconds |
| Change Cycle | 7 seconds | 7 seconds | 7 seconds | 7 seconds | 7 seconds |
| De-burring | 0 seconds | 10 seconds | 10 seconds | 10 seconds | 10 seconds |
| Total Cut Time | 10 seconds | 87 seconds | 46 seconds | 45 seconds | 24 seconds |
| Total Cuts/Hr. | 360 | 41 | 78 | 80 | 150 |
| Total Cuts/Day | 2880 | 328 | 624 | 640 | 1200 |
| Labor Cost/Cut | \$0.14 | \$1.20 | \$0.63 | \$0.62 | \$0.33 |

Costs per cut test results were calculated using a qualified test tool and self test documentation.

| Stock No. | Deep Strut (in.) | Shallow Strut (in.) | Max. Capacity (gauge) | Cylinder (tons) | Unit Weight (lbs.) | Guides (lbs.) | Height (in.) | Height with Handles (in.) | Width (in.) | Depth (in.) |
|-----------------------------|------------------|---------------------|-----------------------|-----------------|--------------------|---------------|--------------|---------------------------|-------------|-------------|
| WILTON® STRUT CUTTER | | | | | | | | | | |
| ESP1100 | 1-5/8 x 1-5/8 | 1-5/8 x 13/16 | 12 | 25 | 49 | 13.5 | 9 | 13 | 17 | 5.5 |

COLD FRONT™ 3037 ATOMIZING COOLING FAN

EFFECTIVE. PORTABLE

HEAT: A HAZARD YOU CAN'T AFFORD

When the temperature rises, so do on-the-job risks. Damaged equipment. Lost productivity. Serious injury. You could accept these risks as the status quo. Or you could beat the heat for good—with the Wilton® Cold Front™ 3037 Atomized Cooling Fan.



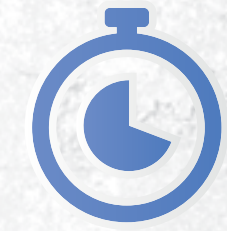
BEAT HEAT

Protect workers from hazardous conditions



BEAT HUMIDITY

Reduce discomfort and equipment damage



BEAT INEFFICIENCY

Keep cool without disrupting workflow



SAVES EFFORT



ADDS POWER



WORKS LONGER



MOVES EASIER

FEATURES

- EFFECTIVE**
- Cools over 3,000 sq. ft.
 - Minimal increase in humidity
- SAFE**
- Keeps workers cool
 - Reduced chance of water damage
 - No puddles, drips or slipping hazards

- FAST**
- Flash evaporation starts cooling quickly
 - Instant startup and shutdown
- DURABLE**
- Galvanized steel and aluminum construction
 - Plastic water tank will not rust
 - No pads or filters to replace

IDEAL FOR

- Automotive
- Production Environments
- Fab Shops
- Light Tradesman
- Maintenance and Repair
- Warehouse and Dock



| Electrical Supply | Cooling Coverage (ft²) | Air Flow (CFM) | Velocity (mph) | Water Output Rate (gal/hr) | Amperage (A) | Fan Diameter (in.) | Fan Speed Settings | Fan Drive | Sound Level (db) | Water Capacity (gal.) | Water Supply | Unit Dimensions (in.) |
|---|------------------------|----------------|----------------|----------------------------|--------------|--------------------|--------------------|-----------|------------------|-----------------------|----------------|-----------------------|
| WILTON® COLD FRONT™ 3037 ATOMIZED COOLING FAN | | | | | | | | | | | | |
| 120 VAC / 60 Hz | 3,161 | 8,462 | 22.3 | 1.74 | 10.3 | 30 | 1 | direct | 77.5 at 5 ft. | 19 | tank (no hose) | 45 L x 24 W x 56 H |

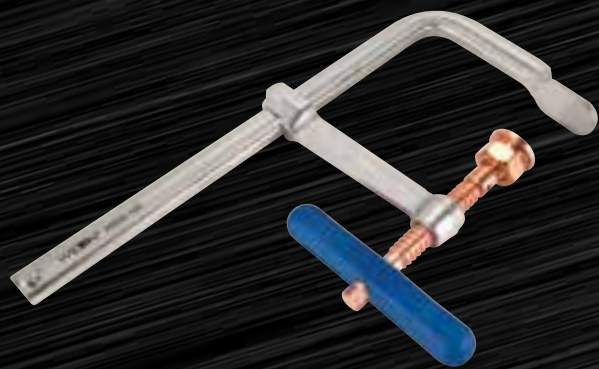




WILTON F-CLAMPS

THE WELDER'S CHOICE

At Wilton®, we know welding. As the leader in professional grade workholding equipment for more than 75 years, we understand the intricacies of your work. That's why we are proud to introduce our full line of welding F-Clamps.



**SPARK-DUTY™
COPPER PLATED
F-CLAMPS**



**CLASSIC SERIES
F-CLAMPS**

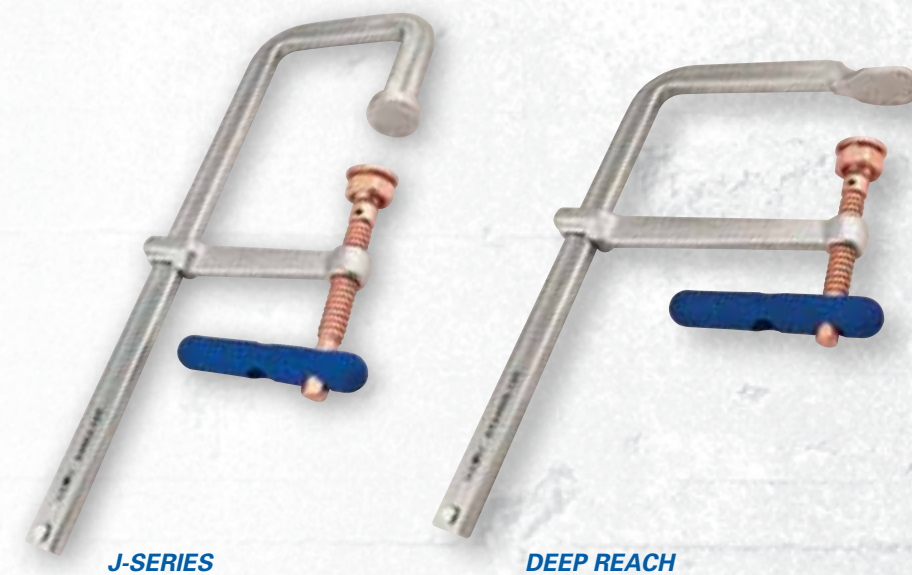
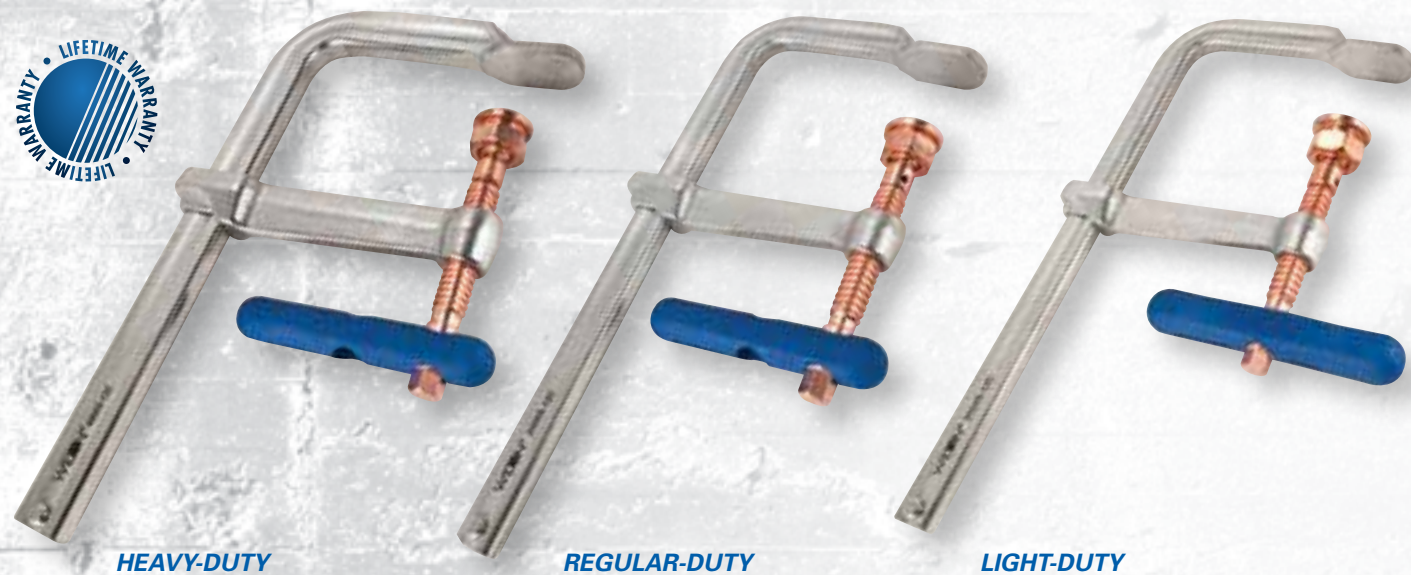


**LEVER
CLAMPS**

SPARK-DUTY™ COPPER-PLATED F-CLAMPS

THE SERIOUS WELDER'S CHOICE

BUILT FOR IRREGULAR SHAPES



V-GROOVE PAD INCLUDED



ERGONOMIC GRIP INCLUDED



COPPER-PLATED SPINDLE

FEATURES

DROP-FORGED ARM:

- Minimal flex under heavy workloads

SPARK-DUTY™ COPPER-PLATED SPINDLE:

- Extends the life of the clamp by protecting the spindle and pad from harmful welding spatter

QUICK-TWIST PADS:

- Simple and fast replaceable pads in V-Groove or serrated surfaces

V-GROOVE PAD

- Included with every clamp. Clamp round objects up to 14" in diameter

ERGONOMIC WILTON-GRIP®:

- Anti-Fatigue Wilton-Grip® provides comfort during repetitive clamping

| Stock No. | Model | Nominal Opening Capacity (in.) | Throat Depth (in.) | Clamping Force (lbs.) | Net Weight (lbs.) |
|--|-----------|--------------------------------|--------------------|-----------------------|-------------------|
| SPARK-DUTY™ 4800S SERIES – HEAVY-DUTY | | | | | |
| 86500 | 4800S-12C | 12 | 7 | 4,880 | 12 |
| 86510 | 4800S-18C | 18 | 7 | 4,880 | 15 |
| 86520 | 4800S-24C | 24 | 7 | 4,880 | 16 |
| 86530 | 4800S-36C | 36 | 7 | 4,880 | 21 |
| 86540 | 4800S-48C | 48 | 7 | 4,880 | 24 |
| 86550 | 4800S-60C | 60 | 7 | 4,880 | 27 |
| SPARK-DUTY™ 2400S SERIES – REGULAR-DUTY | | | | | |
| 86400 | 2400S-8C | 8 | 5-1/2 | 2,660 | 6 |
| 86410 | 2400S-12C | 12 | 5-1/2 | 2,660 | 7 |
| 86420 | 2400S-16C | 16 | 4-3/4 | 2,660 | 7 |
| 86430 | 2400S-20C | 20 | 5-1/2 | 2,660 | 8 |
| 86440 | 2400S-24C | 24 | 4-3/4 | 2,660 | 9 |
| 86450 | 2400S-36C | 36 | 5-1/2 | 2,660 | 12 |
| 86460 | 2400S-48C | 48 | 5-1/2 | 2,660 | 14 |
| 86470 | 2400S-60C | 60 | 5-1/2 | 2,660 | 15 |
| SPARK-DUTY™ 2000S SERIES – LIGHT-DUTY | | | | | |
| 86300 | 2000S-8C | 8 | 4-3/4 | 2,000 | 5 |
| 86310 | 2000S-12C | 12 | 5-1/2 | 2,000 | 5 |
| 86320 | 2000S-18C | 18 | 4-3/4 | 2,000 | 6 |
| 86330 | 2000S-24C | 24 | 4-3/4 | 2,000 | 7 |

FEATURES

J-SHAPED RAIL (J-SERIES):

- Steps over I-Beams and irregular shapes

INCREASED THROAT DEPTH (DEEP REACH):

- Provides deeper reach for unique projects

SPARK-DUTY™ COPPER-PLATED SPINDLE:

- Extends the life of the clamp by protecting the spindle and pad from harmful welding spatter

QUICK-TWIST PADS:

- Simple and fast replaceable pads in V-Groove or serrated surfaces

V-GROOVE PAD

- Included with every clamp. Clamp round objects up to 16" in diameter

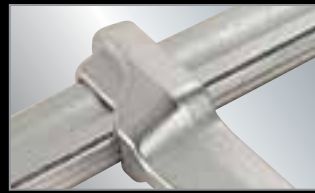
ERGONOMIC WILTON-GRIP®:

- Anti-Fatigue Wilton-Grip® provides comfort during repetitive clamping

| Stock No. | Model | Nominal Opening Capacity (in.) | Throat Depth (in.) | Clamping Force (lbs.) | Net Weight (lbs.) |
|-------------------------------|-------------|--------------------------------|--------------------|-----------------------|-------------------|
| SPARK-DUTY™ J-SERIES | | | | | |
| 86900 | 1200J-10C | 10 | 4-3/4 | 1,200 | 4 |
| 86910 | 2400J-12C | 12 | 5-1/2 | 2,400 | 8 |
| 86920 | 4800J-20C | 20 | 7 | 4,800 | 19 |
| SPARK-DUTY™ DEEP REACH | | | | | |
| 86700 | DT2400S-12C | 12 | 8 | 1,770 | 8 |
| 86710 | DT2400S-24C | 24 | 8 | 1,770 | 10 |



SPARK-DUTY™ WELDERS SHOE CLAMP



FORGED SLIDE ARM



PERMA-PADS®



COPPER-PLATED SPINDLE

COPPER PLATED SPARK-DUTY™ F-CLAMP ACCESSORIES



FEATURES

SPARK-DUTY™ COPPER-PLATED SPINDLE:

- Extends the life of the clamp by protecting the spindle and pad from harmful welding spatter

HEAVY-DUTY SHOE:

- Bolt or weld shoe to workstation for maximum stability

DROP-FORGED ARM:

- Slides up and down robust rail for rapid loading

| Stock No. | Model | Nominal Opening Capacity (in.) | Throat Depth (in.) | Nominal Rail Size (in.) | Clamping Force (lbs.) | Nominal Spindle Diameter (in.) | Net Weight (lbs.) |
|---------------------------------------|-------|--------------------------------|--------------------|-------------------------|-----------------------|--------------------------------|-------------------|
| SPARK-DUTY™ WELDERS SHOE CLAMP | | | | | | | |
| 63295 | - | 8-1/2 | 5-1/2 | 1-3/16 x 9/16 | 2,600 | 3/4 | 8 |

IDEAL FOR

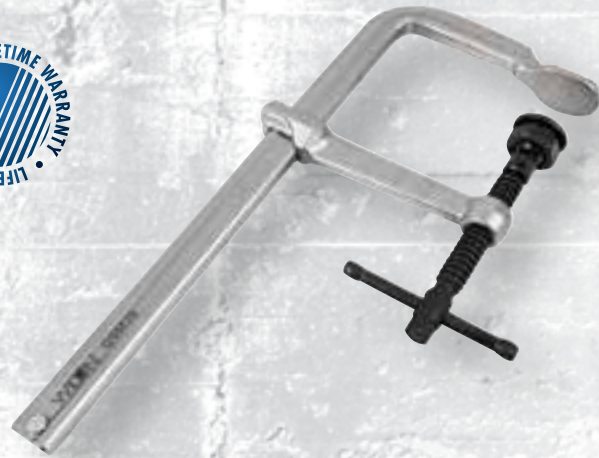
- Production work
- Repetitive welding
- High-efficiency



| Stock No. | Model | Wilton Grip Stock No. | Plain Pad Stock No. | Serrated Pad Stock No. | V-Pad Stock No. | Nut Stock No. | Joint with Spring Pin Stock No. | Spindle and Handle with Spring Pin Stock No. |
|--------------------------------------|-------------|-----------------------|---------------------|------------------------|-----------------|---------------|---------------------------------|--|
| SPARK-DUTY™ 2000S SERIES | | | | | | | | |
| 86300 | 2000S-8C | 1713511 | 2909101 | 2909201 | 2909301 | 1701701 | 1701501 | 1701601 |
| 86310 | 2000S-12C | 1713551 | 2909101 | 2909201 | 2909301 | 1701701 | 1701501 | 1701601 |
| 86320 | 2000S-18C | 1713511 | 2909101 | 2909201 | 2909301 | 1701701 | 1701501 | 1701601 |
| 86330 | 2000S-24C | 1713511 | 2909101 | 2909201 | 2909301 | 1701701 | 1701501 | 1701601 |
| SPARK-DUTY™ 2400S SERIES | | | | | | | | |
| 86400 | 2400S-8C | 1713551 | 2909102 | 2909202 | 2909302 | 1701702 | 1701502 | 1701602 |
| 86410 | 2400S-12C | 1713551 | 2909102 | 2909202 | 2909302 | 1701702 | 1701502 | 1701602 |
| 86420 | 2400S-16C | 1713551 | 2909102 | 2909202 | 2909302 | 1701702 | 1701502 | 1701602 |
| 86430 | 2400S-20C | 1713551 | 2909102 | 2909202 | 2909302 | 1701702 | 1701502 | 1701602 |
| 86440 | 2400S-24C | 1713551 | 2909102 | 2909202 | 2909302 | 1701702 | 1701502 | 1701602 |
| 86450 | 2400S-36C | 1713551 | 2909102 | 2909202 | 2909302 | 1701702 | 1701502 | 1701602 |
| 86460 | 2400S-48C | 1713551 | 2909102 | 2909202 | 2909302 | 1701702 | 1701502 | 1701602 |
| 86470 | 2400S-60C | 1713551 | 2909102 | 2909202 | 2909302 | 1701702 | 1701502 | 1701602 |
| SPARK-DUTY™ 4800S SERIES | | | | | | | | |
| 86500 | 4800S-12C | 1713561 | 2909102 | 2909202 | 2909302 | 1701702 | 1701502 | 1701603 |
| 86510 | 4800S-18C | 1713561 | 2909102 | 2909202 | 2909302 | 1701702 | 1701502 | 1701603 |
| 86520 | 4800S-24C | 1713561 | 2909102 | 2909202 | 2909302 | 1701702 | 1701502 | 1701603 |
| 86530 | 4800S-36C | 1713561 | 2909102 | 2909202 | 2909302 | 1701702 | 1701502 | 1701603 |
| 86540 | 4800S-48C | 1713561 | 2909102 | 2909202 | 2909302 | 1701702 | 1701502 | 1701603 |
| 86550 | 4800S-60C | 1713561 | 2909102 | 2909202 | 2909302 | 1701702 | 1701502 | 1701603 |
| SPARK-DUTY™ DEEP REACH SERIES | | | | | | | | |
| 86700 | DT2400S-12C | 1713551 | 2909101 | 2909201 | 2909301 | 1701701 | 1701501 | 1701601 |
| 86710 | DT2400S-24C | 1713551 | 2909101 | 2909201 | 2909301 | 1701701 | 1701501 | 1701601 |
| SPARK-DUTY™ J SERIES | | | | | | | | |
| 86900 | 1200J-10C | 1713551 | 2909100 | 2909200 | 2909300 | 1701700 | 1701500 | 1701600 |
| 86910 | 2400J-12C | 1713551 | 2909102 | 2909202 | 2909302 | 1701702 | 1701502 | 1701602 |
| 86920 | 4800J-20C | 1713561 | 2909102 | 2909202 | 2909302 | 1701702 | 1701502 | 1701603 |

CLASSIC™ SERIES HEAVY-DUTY F-CLAMPS

NOTHING BEATS A CLASSIC



FORGED SLIDE ARM



STURDY TOMMY BAR



HEAVY DUTY
REPLACEABLE PAD

FEATURES

BLACK OXIDE SPINDLES:

- Resist wear and tear while impeding rust

DROP-FORGED ARM:

- Provides minimal flex under heavy workloads

QUICK TWIST PADS:

- Heavy duty pads are simple and fast to replace

STURDY TOMMY BAR:

- Engineered for durability and comfort

IDEAL FOR

- Fabrication
- Welding
- Repetitive Clamping

| Stock No. | Model | Nominal Opening Capacity (in.) | Throat Depth (in.) | Clamping Force (lbs.) | Net Weight (lbs.) |
|------------------------------------|-------|--------------------------------|--------------------|-----------------------|-------------------|
| CLASSIC HEAVY-DUTY F-CLAMPS | | | | | |
| 86640 | GSM20 | 8 | 5-1/2 | 2,660 | 6 |
| 86650 | GSM30 | 12 | 5-1/2 | 2,660 | 7 |
| 86660 | GSM40 | 16 | 4-3/4 | 2,660 | 7 |
| 86670 | GSM50 | 20 | 5-1/2 | 2,660 | 8 |
| 86680 | GSM60 | 24 | 4-3/4 | 2,660 | 9 |

| Stock No. | Plain Pad Stock No. | Serrated Pad Stock No. | V Pad Stock No. | Nut Stock No. | Joint w/ Spring Pin Stock No. | Spindle and Handle w/ Spring Pin Stock No. |
|---|---------------------|------------------------|-----------------|---------------|-------------------------------|--|
| REPLACEMENT PARTS CLASSIC HEAVY-DUTY F-CLAMP | | | | | | |
| 86640 | 2909102A | 2909202A | 2909302A | 1701702A | 1701502A | 1701602B |
| 86650 | 2909102A | 2909202A | 2909302A | 1701702A | 1701502A | 1701602B |
| 86660 | 2909102A | 2909202A | 2909302A | 1701702A | 1701502A | 1701602B |
| 86670 | 2909102A | 2909202A | 2909302A | 1701702A | 1701502A | 1701602B |
| 86680 | 2909102A | 2909202A | 2909302A | 1701702A | 1701502A | 1701602B |

CLASSIC™ SERIES REGULAR & LIGHT DUTY F-CLAMPS

NOTHING BEATS A CLASSIC



FEATURES

BLACK OXIDE SPINDLES:

- Resist wear and tear while impeding rust

DROP-FORGED ARM:

- Provides minimal flex under heavy workloads

SWIVEL PAD:

- Centers on workpiece for a sturdy hold

STURDY TOMMY BAR:

- Engineered for durability and comfort

IDEAL FOR

- Fabrication
- Welding
- Repetitive Clamping



FORGED SLIDE ARM



STURDY TOMMY BAR



OSCILLATING PAD

| Stock No. | Model | Nominal Opening Capacity (in.) | Throat Depth (in.) | Clamping Force (lbs.) | Net Weight (lbs.) |
|--------------------------------------|----------|--------------------------------|--------------------|-----------------------|-------------------|
| CLASSIC REGULAR-DUTY F-CLAMPS | | | | | |
| 86200 | 1800S-8 | 8 | 4-3/4 | 1,800 | 4 |
| 86210 | 1800S-12 | 12 | 5-1/2 | 1,800 | 5 |
| 86220 | 1800S-18 | 18 | 4-3/4 | 1,800 | 6 |
| 86230 | 1800S-24 | 24 | 4-3/4 | 1,800 | 6 |
| CLASSIC LIGHT-DUTY F-CLAMPS | | | | | |
| 86100 | 660S-8 | 8 | 4 | 660 | 2 |
| 86110 | 660S-12 | 12 | 4 | 660 | 2 |
| 86120 | 660S-18 | 18 | 4 | 660 | 3 |
| 86130 | 1200S-8 | 8 | 4-3/4 | 1,200 | 2 |
| 86140 | 1200S-12 | 12 | 4-3/4 | 1,200 | 3 |
| 86150 | 1200S-18 | 18 | 4-3/4 | 1,200 | 4 |
| 86160 | 1200S-24 | 24 | 4-3/4 | 1,200 | 4 |

CLASSIC™ SERIES MINI F-CLAMPS

NOTHING BEATS A CLASSIC



FORGED SLIDE ARM



STURDY TOMMY BAR



OSCILLATING PAD

HEAVY-DUTY LEVER CLAMPS

SPINDLELESS CLAMPS



QUICK RATCHETING
DESIGN



SELF CENTERING PAD



ERGONOMIC HANDLE

FEATURES

BLACK OXIDE SPINDLES:

- Resist wear and tear while impeding rust

DROP-FORGED ARM:

- Provides minimal flex under heavy workloads

SWIVEL PAD:

- Centers on workpiece for a sturdy hold

STURDY TOMMY BAR:

- Engineered for durability and comfort

| Stock No. | Model | Nominal Opening Capacity (in.) | Throat Depth (in.) | Clamping Force (lbs.) | Net Weight (lbs.) |
|------------------------------|--------|--------------------------------|--------------------|-----------------------|-------------------|
| CLASSIC MINI F-CLAMPS | | | | | |
| 86000 | MMS-4 | 4 | 2-1/4 | 400 | 1 |
| 86010 | MMS-8 | 8 | 2-1/4 | 400 | 1 |
| 86020 | MMS-12 | 12 | 2-1/4 | 400 | 1 |

IDEAL FOR

- Fabrication
- Welding
- Repetitive Clamping

FEATURES

RATCHETING DESIGN:

- Allows easy, spindle-free operation

QUICK-TRIGGER RELEASE:

- Release clamp pressure with one squeeze

WILTON® BLUE ALUMINUM HANDLE:

- Ergonomically designed for repetitive clamping and resistant to heat

SELF CENTERING PAD:

- Centers on workpiece for a sturdy hold

| Stock No. | Model | Nominal Opening Capacity (in.) | Throat Depth (in.) | Clamping Force (lbs.) | Net Weight (lbs.) |
|---------------------|-------|--------------------------------|--------------------|-----------------------|-------------------|
| LEVER CLAMPS | | | | | |
| 86800 | LC4 | 4 | 2-3/8 | 350 | 2 |
| 86810 | LC8 | 8 | 4 | 770 | 3 |
| 86820 | LC12 | 12 | 5-1/2 | 1,100 | 3 |
| 86830 | LC20 | 20 | 4-3/4 | 1,200 | 4 |





WILTON® C-CLAMPS

QUALITY CLAMPING SOLUTIONS

Tried and true, Wilton® C-Clamps have been a part of American history stemming all the way back to the automotive boom in the 1950's. To this day, through evolutionary innovation, you will find the clamp for your application in our offering of over 135 different C-Clamps.



**BRUTE FORCE™
C-CLAMPS**



**400 SERIES
C-CLAMPS**



**4400 & 800
C-CLAMPS**



**CARRIAGE
C-CLAMPS**



**JUNIOR
C-CLAMPS**



**SPECIALTY
CLAMPS**

BRUTE FORCE™ 0-SERIES C-CLAMPS

BRIDGE / BOILER CLAMPS

**MADE IN
USA**



FULL LENGTH SPINDLE



SQUARE SPINDLE HEAD



40,000 LBS. OF PURE
CLAMPING PRESSURE



NOTE:

• Meets federal spec # GGG-C-406D, Type I, Class D Heavy Service

FEATURES

HIGHEST CLAMPING PRESSURE:

- Ranging up to 40,000 lbs. standing up to the demands of the heaviest industrial applications

SPINDLE:

- Full length, machined from a single piece of square, cold drawn steel, hardened and tempered

SQUARE SPINDLE HEAD:

- Stands up to heavy wrench tightening use, including both hand and torque wrench

IDEAL FOR

- Heavy Construction
- Bridge Building
- Heavy Fabrication
- Ship Building

| Stock No. | Model | Nominal Opening Capacity (in.) | Throat Depth (in.) | Clamping Force (lbs.) | Spindle Size (in.) | Net Weight (lbs.) |
|-------------------------------|------------|--------------------------------|--------------------|-----------------------|--------------------|-------------------|
| BRUTE FORCE – 0 SERIES | | | | | | |
| 14518 | 1 F.C. | 0 – 1-3/8 | 1-3/32 | 5,600 | 7/16 | 1 |
| 14527 | 1-1/2 F.C. | 0 – 1-3/4 | 1-3/16 | 8,750 | 5/8 | 2 |
| 14536 | 2 F.C. | 0 – 2-3/8 | 1-7/8 | 12,500 | 3/4 | 3 |
| 14545 | 3 F.C. | 0 – 3-5/16 | 2-5/16 | 16,250 | 7/8 | 7 |
| 14554 | 4 F.C. | 0 – 4-1/2 | 2-3/4 | 20,000 | 1 | 10 |
| 14563 | 5 F.C. | 0 – 5-1/4 | 3-1/8 | 23,800 | 1 | 14 |
| 14572 | 6 F.C. | 0 – 6-1/4 | 3-3/8 | 27,500 | 1-1/8 | 19 |
| 14581 | 8 F.C. | 0 – 8-1/2 | 3-5/8 | 31,250 | 1-1/4 | 26 |
| 14590 | 10 F.C. | 0 – 10-1/4 | 3-15/16 | 35,000 | 1-1/4 | 37 |
| 14599 | 12 F.C. | 0 – 12-3/8 | 4-1/4 | 40,000 | 1-1/4 | 44 |

BRUTE FORCE™ 100-SERIES C-CLAMPS

15,000 LBS. OF PRESSURE

**MADE IN
USA**



HARDENED AND
TEMPERED STEEL
SPINDLE



REPLACEABLE
PERMA-PADS



SQUARE HEAD HANDLE



NOTE:

• Meets federal spec # GGG-C-406D, Type I, Class B Medium Service

FEATURES

SPINDLE:

- Full length, machined from a single piece of square, cold drawn steel, hardened and tempered

SQUARE HEAD HANDLE:

- Designed for maximum torque and flexible usage
- Can be tightened by hand or wrench

IDEAL FOR

- Heavy Construction
- Mining and Extraction
- Machine Tool Fixtures
- Press Work

| Stock No. | Model | Nominal Opening Capacity (in.) | Throat Depth (in.) | Clamping Force (lbs.) | Spindle Size (in.) | Net Weight (lbs.) |
|---------------------------------|-------|--------------------------------|--------------------|-----------------------|--------------------|-------------------|
| BRUTE FORCE – 100 SERIES | | | | | | |
| 14114 | 102 | 0 – 2 | 1-1/2 | 7,500 | 9/16 | 2 |
| 14128 | 103 | 0 – 3 | 2 | 8,750 | 5/8 | 3 |
| 14142 | 104 | 0 – 4 | 2-1/4 | 10,000 | 3/4 | 4 |
| 14156 | 106 | 2 – 6 | 2-1/2 | 11,250 | 3/4 | 6 |
| 14170 | 108 | 4 – 8 | 2-3/4 | 12,500 | 3/4 | 8 |
| 14184 | 110 | 6 – 10 | 2-7/8 | 13,750 | 3/4 | 9 |
| 14198 | 112 | 8 – 12 | 2-15/16 | 15,000 | 3/4 | 12 |

CLASSIC 400 SERIES™ C-CLAMPS

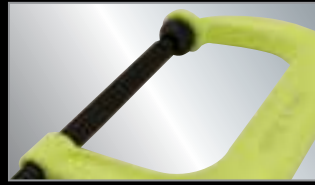
DEEP THROAT CLAMPS



HI-VIS



V GROOVED ANVIL



HI-VIS SAFETY
YELLOW FRAME



REPLACEABLE
PERMA-PADS



NOTE:

- Meets federal spec # GGG-C-406a, Type I, Class A, Grade a, Style 1 & 2
- Hi Vis conforms to OSHA safety color standard for physical regulation #1910.144

FEATURES

DROP FORGED:

- Manufactured for greater strength under regular strength applications

ACME ROLLED SPINDLE:

- Threads provide continuous smooth operation for faster clamping action and maximum strength

BLACK OXIDE COATING:

- Spindles and PERMA-PADS® are treated to resist corrosion

V GROOVED ANVIL:

- Feature allows secure holding of all materials including rounds, squares and flats

IDEAL FOR

- Steel Fabrication
- Industrial Maintenance
- Production
- Repair Operations

| Stock No. | Model | Nominal Opening Capacity (in.) | Throat Depth (in.) | Clamping Force (lbs.) | Spindle Size(in.) | Net Weight (lbs.) |
|--|--------|--------------------------------|--------------------|-----------------------|-------------------|-------------------|
| CLASSIC 400 SERIES™ | | | | | | |
| 14214 | 402 | 0 – 2-1/8 | 2-1/4 | 3,500 | 9/16 | 2 |
| 14228 | 403 | 0 – 3 | 2-1/2 | 3,500 | 9/16 | 2 |
| 14242 | 404 | 0 – 4-1/4 | 3-1/4 | 6,200 | 3/4 | 4 |
| 14256 | 406 | 0 – 6-1/16 | 4-1/8 | 6,600 | 3/4 | 5 |
| 14270 | 408 | 0 – 8-1/4 | 5 | 6,900 | 3/4 | 8 |
| 14284 | 410 | 2 – 10-1/8 | 6 | 8,000 | 3/4 | 11 |
| 14298 | 412 | 2 – 12-1/4 | 6-5/16 | 9,300 | 7/8 | 14 |
| CLASSIC 400 SERIES™ HI-VIS SAFETY | | | | | | |
| 14300 | 402-SF | 0 – 2-1/8 | 2-1/4 | 3,500 | 9/16 | 1 |
| 14301 | 403-SF | 0 – 3 | 2-1/2 | 3,500 | 9/16 | 2 |
| 14302 | 404-SF | 0 – 4-1/4 | 3-1/4 | 6,200 | 3/4 | 4 |
| 14303 | 406-SF | 0 – 6-1/16 | 4-1/8 | 6,600 | 3/4 | 5 |
| 14305 | 408-SF | 0 – 8-1/4 | 5 | 6,900 | 3/4 | 7 |
| 14306 | 410-SF | 2 – 10-1/8 | 6 | 8,000 | 3/4 | 11 |
| 14307 | 412-SF | 2 – 12-1/4 | 6-5/16 | 9,300 | 7/8 | 15 |

SPARK-DUTY™ 400P AND HI-VIS C-CLAMPS

SPATTER RESISTANT COPPER



400P

HI-VIS



V-GROOVED ANVIL



HI-VIS SAFETY
YELLOW FRAME



COPPER PLATED SPINDLE
AND PERMA-PADS®



NOTE:

- Hi Vis conforms to OSHA safety color standard for physical regulation #1910.144

FEATURES

DROP FORGED:

- Manufactured for greater strength under regular strength applications

V GROOVED ANVIL:

- Feature allows secure holding of all materials including rounds, squares and flats

ACME ROLLED SPINDLE:

- Threads provide continuous smooth operation for faster clamping action and maximum strength

COPPER PLATED:

- Spindles and pads are copper plated to provide resistance to welding splatter and corrosion

IDEAL FOR

- Steel Fabrication
- Industrial Welders

| Stock No. | Model | Nominal Opening Capacity (in.) | Throat Depth (in.) | Clamping Force (lbs.) | Spindle Size(in.) | Net Weight (lbs.) |
|--------------------------------|--------|--------------------------------|--------------------|-----------------------|-------------------|-------------------|
| SPARK-DUTY 400P | | | | | | |
| 14215 | 402-P | 0-2-1/8 | 2-5/8 | 3,500 | 9/16 | 2 |
| 14229 | 403-P | 0-3 | 2-1/2 | 3,500 | 5/8 | 2 |
| 14243 | 404-P | 0-4-1/4 | 3-1/4 | 6,200 | 3/4 | 4 |
| 14257 | 406-P | 0-6-1/16 | 4-1/8 | 6,600 | 3/4 | 5 |
| 14271 | 408-P | 0-8-1/4 | 5 | 6,900 | 3/4 | 8 |
| 14285 | 410-P | 2-10-1/8 | 6 | 8,000 | 3/4 | 10 |
| 14299 | 412-P | 2-12-1/4 | 6-5/16 | 9,300 | 7/8 | 15 |
| SPARK-DUTY 400CS HI-VIS | | | | | | |
| 20479 | H402CS | 0 – 2 | 2 | 3,500 | 1/2 | 2 |
| 20481 | H403CS | 0 – 3 | 2-3/8 | 3,500 | 5/8 | 2 |
| 20483 | H404CS | 0 – 4 | 2-3/4 | 6,200 | 3/4 | 3 |
| 20484 | H406CS | 0 – 6 | 3-5/8 | 6,600 | 3/4 | 5 |
| 20485 | H408CS | 0 – 8 | 4-1/2 | 6,900 | 3/4 | 8 |
| 20486 | H410CS | 2 – 10 | 5-3/8 | 8,000 | 7/8 | 12 |
| 20487 | H412CS | 2 – 12 | 5-3/4 | 9,500 | 7/8 | 15 |

CLASSIC 400 SERIES™ COLUMBIAN ECONOMY C-CLAMPS

SAFE AND ECONOMICAL



NOTE:
• COLUMBIAN C-Clamp meets federal spec # GGG-C-406D, Type I, Class A Light Service



**DROP FORGED
CONSTRUCTION**



OSCILLATING HEAD



BLACK OXIDE COATING



4400 & 800 SERIES C-CLAMPS

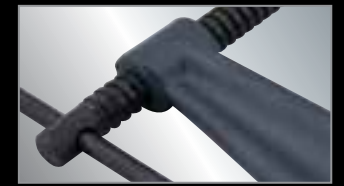
SQUARE THROAT AND STANDARD DEPTH



NOTE:
• 800 Series C-Clamp meets federal spec # GGG-C-406a, Type I, Class A, Grade a, Style 1



PERMA-PADS®



BLACK OXIDE COATING



**DROP FORGED
CONSTRUCTION**



FEATURES

DROP FORGED:

- Manufactured for greater strength under regular strength applications

BLACK OXIDE COATING:

- Spindles and pads are treated to resist corrosion

PATENTED DESIGN:

- Frame geometry allows for maximum strength with greater throat depth and lower weight

IDEAL FOR

- Steel Fabrication
- Industrial Maintenance
- Production
- Repair Operations

| Stock No. | Model | Nominal Opening Capacity (in.) | Throat Depth (in.) | Clamping Force (lbs.) | Spindle Size (in.) | Net Weight (lbs.) |
|-----------------------------|-------|--------------------------------|--------------------|-----------------------|--------------------|-------------------|
| 400 SERIES COLUMBIAN | | | | | | |
| 20301 | H402 | 0 – 2 | 2 | 3,500 | 1/2 | 2 |
| 20302 | H403 | 0 – 3 | 2-3/8 | 3,500 | 5/8 | 2 |
| 20303 | H404 | 0 – 4 | 2-3/4 | 6,200 | 3/4 | 3 |
| 20304 | H406 | 0 – 6 | 3-5/8 | 6,600 | 3/4 | 5 |
| 20305 | H408 | 0 – 8 | 4-1/2 | 6,900 | 3/4 | 8 |
| 20306 | H410 | 0 – 10 | 5-3/8 | 8,000 | 7/8 | 12 |
| 20307 | H412 | 0 – 12 | 5-3/4 | 9,500 | 7/8 | 14 |

FEATURES

SQUARE THROAT DESIGN (4400 SERIES):

- Up to 37% more throat depth than standard deep throat C-Clamps

PERMA-PADS®:

- Exclusive black oxide coated pad swivels and adapts to angular work pieces for tighter holding

REPLACEABLE PARTS:

- Both the spindle and PERMA-PADS® are replaceable and can be individually ordered

DROP FORGED:

- Manufactured for greater strength under regular strength applications

IDEAL FOR

- Steel Fabrication
- Industrial Maintenance
- Production
- Repair Operations

| Stock No. | Model | Nominal Opening Capacity (in.) | Throat Depth (in.) | Clamping Force (lbs.) | Spindle Size (in.) | Net Weight (lbs.) |
|----------------------------------|-------|--------------------------------|--------------------|-----------------------|--------------------|-------------------|
| 4400 SERIES SQUARE THROAT | | | | | | |
| 14350 | 4404 | 0 – 4 | 4 | 4,100 | 3/4 | 5 |
| 14375 | 4406 | 0 – 6 | 5 | 5,400 | 3/4 | 6 |
| 14400 | 4408 | 2 – 8 | 6 | 5,900 | 3/4 | 10 |
| 800 SERIES STANDARD DEPTH | | | | | | |
| 14714 | 802 | 0-2 | 1-13/16 | 2,700 | 9/16 | 1 |
| 14728 | 803 | 0-3 | 1-15/16 | 3,000 | 9/16 | 2 |
| 14742 | 804 | 0-4 | 2-5/16 | 3,700 | 5/8 | 2 |
| 14756 | 806 | 0-6 | 2-15/16 | 4,500 | 5/8 | 4 |
| 14770 | 808 | 0-8 | 3-7/16 | 5,200 | 3/4 | 7 |
| 14784 | 810 | 1-1/2-10 | 3-3/4 | 6,000 | 3/4 | 8 |
| 14798 | 812 | 1-1/8-12 | 3-7/8 | 8,000 | 3/4 | 15 |

540A SERIES CARRIAGE C-CLAMPS

INDUSTRY'S CLASSIC DESIGN



OSCILLATING HEAD



SLIDING CROSS
PIN HANDLE

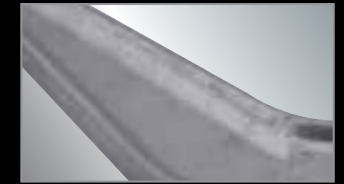


DUCTILE IRON FRAMES

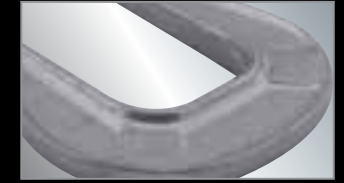


140 SERIES CARRIAGE C-CLAMPS

LIGHT INDUSTRIAL



DUCTILE IRON FRAMES



EXTRA DEEP REACH
DESIGN



BLACK OXIDE COATING



FEATURES

DUCTILE IRON FRAMES:

- Rugged frames designed for maximum clamping pressure

CLASSIC DESIGN:

- Most popular C-Clamp for over 50 years

BLACK OXIDE COATING:

- Spindles and pads are treated to resist corrosion

OSCILLATING HEAD:

- High quality steel pad is built to last and provide firm gripping action on angular surfaces

IDEAL FOR

- Light Industrial
- Home Craftsman
- Woodworking
- Repair

| Stock No. | Model | Nominal Opening Capacity (in.) | Throat Depth (in.) | Clamping Force (lbs.) | Spindle Size (in.) | Net Weight (lbs.) |
|----------------------------|------------|--------------------------------|--------------------|-----------------------|--------------------|-------------------|
| 540 SERIES CARRIAGE | | | | | | |
| 22001 | 540A-2-1/2 | 0 - 2-1/2 | 1-3/4 | 1,110 | 1/2 | 1 |
| 22002 | 540A-3 | 0 - 3 | 1-7/8 | 1,800 | 1/2 | 2 |
| 22003 | 540A-4 | 0 - 4 | 2-1/16 | 2,150 | 5/8 | 2 |
| 22004 | 540A-5 | 0 - 5 | 2-1/2 | 2,250 | 5/8 | 2 |
| 22005 | 540A-6 | 0 - 6 | 2-3/4 | 2,450 | 5/8 | 3 |
| 22006 | 540A-8 | 0 - 8 | 3-1/4 | 2,750 | 3/4 | 5 |
| 22007 | 540A-10 | 0 - 10 | 3-5/8 | 2,850 | 7/8 | 7 |
| 22008 | 540A-12 | 0 - 12 | 3-5/8 | 2,850 | 7/8 | 9 |
| 22009 | 540A-14 | 0 - 14 | 3-3/4 | 2,850 | 7/8 | 10 |

FEATURES

DEEP REACH PATTERN:

- Provided maximum depth for applications requiring increased throat capacity

DUCTILE IRON FRAMES:

- Rugged frames designed for maximum clamping pressure

BLACK OXIDE COATING:

- Spindle and pads are treated to resist corrosion

IDEAL FOR

- Light Industrial
- Home Craftsman
- Woodworking
- Repair

| Stock No. | Model | Nominal Opening Capacity (in.) | Throat Depth (in.) | Clamping Force (lbs.) | Spindle Size (in.) | Net Weight (lbs.) |
|-------------------------------------|----------|--------------------------------|--------------------|-----------------------|--------------------|-------------------|
| 140 SERIES STANDARD CARRIAGE | | | | | | |
| 41411 | 141C | 0 - 1 | 1-1/16 | 645 | 1/4 | 1 |
| 41416 | 141-1/2C | 0 - 1-1/2 | 1-1/2 | 820 | 5/16 | 1 |
| 41421 | 142C | 0 - 2 | 1-1/8 | 800 | 5/16 | 1 |
| 41423 | 1422C | 0 - 2-1/2 | 1-7/16 | 850 | 3/8 | 1 |
| 41426 | 142-1/2C | 0 - 2-1/2 | 2-1/2 | 1,005 | 3/8 | 1 |
| 41405 | 143C | 0 - 3 | 2 | 1,430 | 3/8 | 1 |
| 41406 | 144C | 0 - 4 | 2-3/4 | 1,535 | 1/2 | 1 |
| 41407 | 145C | 0 - 5 | 3 | 1,225 | 5/8 | 2 |
| 41408 | 146C | 0 - 6 | 3-1/4 | 1,400 | 5/8 | 3 |
| 41409 | 148C | 0 - 8 | 4 | 1,700 | 3/4 | 4 |
| DEEP REACH CARRIAGE | | | | | | |
| 42510 | 251 | 0 - 1 | 3 | 350 | 1/4 | 1 |
| 42520 | 252 | 0 - 2 | 3-1/2 | 450 | 5/16 | 1 |
| 42525 | 252-1/2 | 0 - 2-1/2 | 4 | 600 | 3/8 | 1 |
| 42530 | 253 | 0 - 3 | 4-1/2 | 700 | 7/16 | 2 |
| XTRA DEEP REACH CARRIAGE | | | | | | |
| 42450 | 245 | 2-1/2 | 4-3/4 | 1,600 | 7/16 | 2 |
| 42460 | 246 | 2-1/2 | 6-1/4 | 1,600 | 7/16 | 2 |

JUNIOR® & SUPER JUNIOR® C-CLAMPS

SUPER SMALL. SUPER TOUGH.

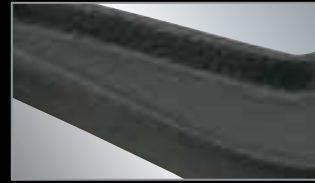
566/588 JUNIOR



SUPER JUNIOR



ZINC PLATED SCREW

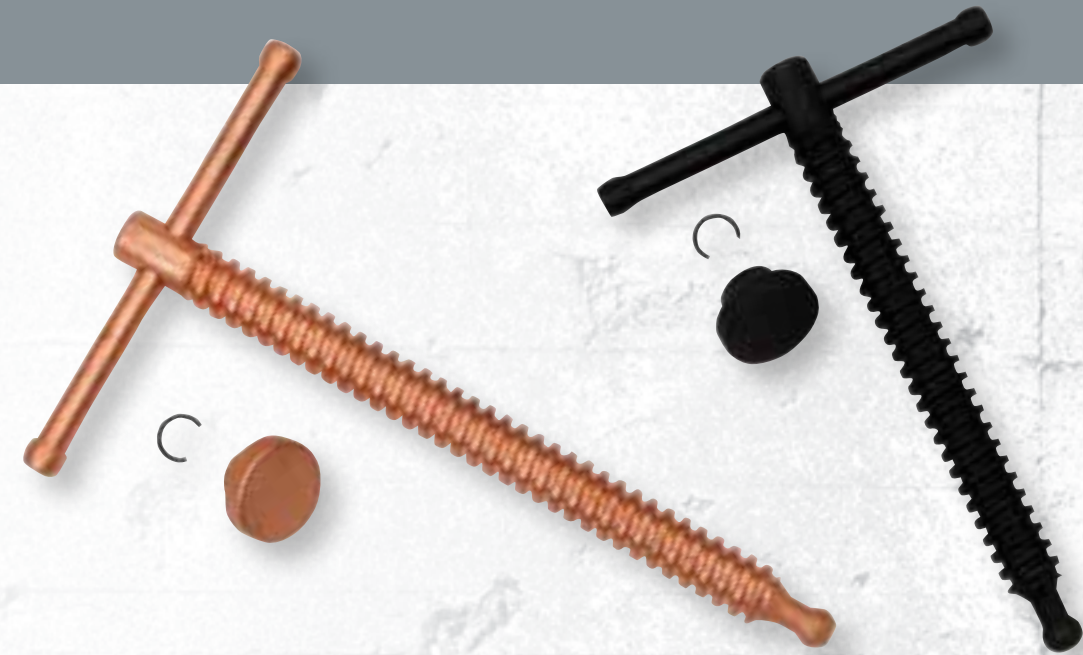


FORGED STEEL FRAMES



NYLON CAPS/FOOT INSERTS

C-CLAMP REPLACEMENT PARTS



FEATURES

ZINC PLATED SCREW:

- Steel spindles are treated to resist corrosion extending life

FORGED STEEL FRAMES:

- Heat treated to provide a strong weight to strength ratio

NYLON CAPS / FOOT INSERTS (566/588 JUNIOR):

- Optional feature to protect the work surface from marring

OSCILLATING HEAD:

- Firm gripping action on angular surfaces

IDEAL FOR

- Light-Duty Clamping
- Aircraft/Aerospace Industry
- Pattern and Mold Making

| Stock No. | Model | Nominal Opening Capacity (in.) | Throat Depth (in.) | Clamping Force (lbs.) | Spindle Size (in.) | Net Weight (lbs.) |
|------------------------|-------|--------------------------------|--------------------|-----------------------|--------------------|-------------------|
| SUPER JUNIOR® | | | | | | |
| 21301 | 50 | 0 – 1 | 1 | 500 | 1/4 | 1 |
| 21302 | 51 | 0 – 1 | 1-1/2 | 500 | 1/4 | 1 |
| 21303 | 52 | 0 – 1-1/4 | 1-1/4 | 800 | 1/4 | 1 |
| 21304 | 53 | 0 – 1-1/2 | 1-1/2 | 850 | 5/16 | 1 |
| 21305 | 54 | 0 – 2 | 1-1/4 | 875 | 5/16 | 1 |
| 21306 | 55 | 0 – 3 | 1-3/8 | 1,100 | 3/8 | 1 |
| 21307 | 56 | 0 – 2-1/2 | 2-1/2 | 850 | 3/8 | 1 |
| 566/588 JUNIOR® | | | | | | |
| 22105 | H566 | 0 – 1-1/4 | 1-1/4 | 450 | 1/4 | 1 |
| 22115 | H566N | 0 – 1-1/4 | 1-3/16 | 550 | 1/4 | 1 |
| 22116 | H568N | 0 – 2-1/2 | 2-5/16 | 550 | 3/4 | 1 |

| Stock No. | Model | Spindle Assembly Stock No. | Perma-Pad® with Ring Stock No. |
|-------------------------------|------------|----------------------------|--------------------------------|
| BRUTE FORCE 0-SERIES | | | |
| 14518 | 1 F.C. | 20203-35 | N/A |
| 14527 | 1-1/2 F.C. | 20203-35 | N/A |
| 14536 | 2 F.C. | 07142-35 | N/A |
| 14545 | 3 F.C. | 07161-35 | N/A |
| 14554 | 4 F.C. | 07147-35 | N/A |
| 14563 | 5 F.C. | 07162-35 | N/A |
| 14572 | 6 F.C. | 07149-35 | N/A |
| 14581 | 8 F.C. | 07150-35 | N/A |
| 14590 | 10 F.C. | 07151-35 | N/A |
| 14599 | 12 F.C. | 07152-35 | N/A |
| BRUTE FORCE 100 SERIES | | | |
| 14114 | 102 | 1700010 | 2901300 |
| 14128 | 103 | 1700020 | 2901300 |
| 14142 | 104 | 1700030 | 2901310-1 |
| 14156 | 106 | 1700030 | 2901310-1 |
| 14170 | 108 | 1700030 | 2901310-1 |
| 14184 | 110 | 1700030 | 2901310-1 |
| 14198 | 112 | 1700030 | 2901310-1 |
| CLASSIC 400 SERIES | | | |
| 14214 | 402 | 1701080 | 2901300 |
| 14228 | 403 | 1701160 | 2901300 |
| 14242 | 404 | 1700150 | 2901310 |
| 14256 | 406 | 1700170 | 2901310 |
| 14270 | 408 | 1700190 | 2901310 |
| 14284 | 410 | 1700190 | 2901310 |
| 14298 | 412 | 1700220 | 2901310 |

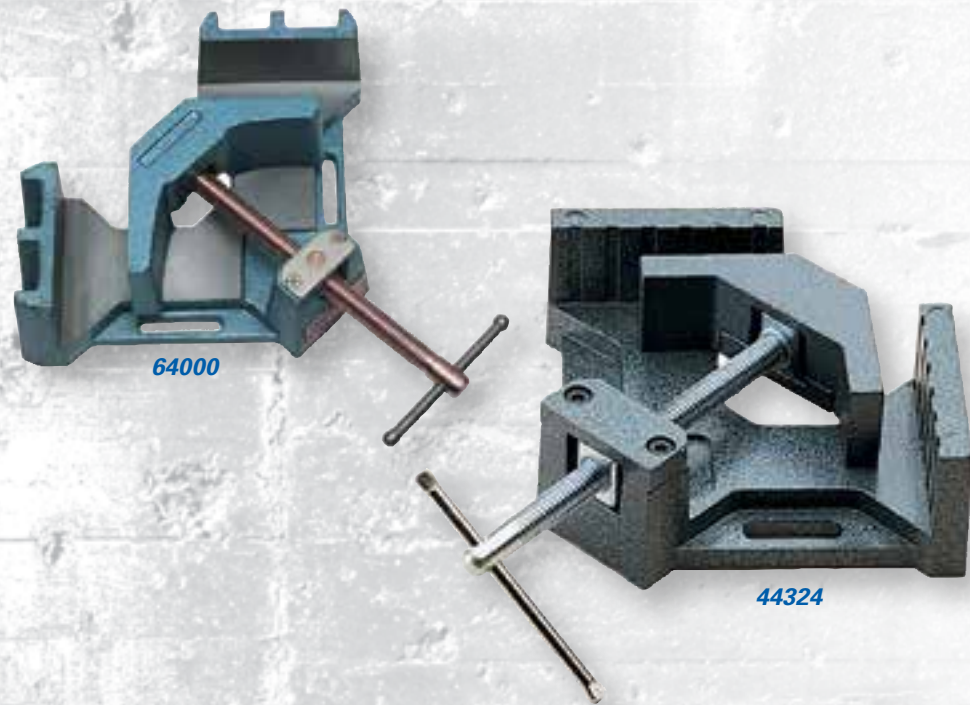
| Stock No. | Model | Spindle Assembly Stock No. | Perma-Pad® with Ring Stock No. |
|---|--------|----------------------------|--------------------------------|
| CLASSIC 400 SERIES HI-VIS SAFETY | | | |
| 14300 | 402-SF | 1701080 | 2901300 |
| 14301 | 403-SF | 1701160 | 2901300 |
| 14302 | 404-SF | 1700150 | 2901310 |
| 14303 | 406-SF | 1700170 | 2901310 |
| 14305 | 408-SF | 1700190 | 2901310 |
| 14306 | 410-SF | 1700190 | 2901310 |
| 14307 | 412-SF | 1700220 | 2901310 |
| SPARK-DUTY 400P | | | |
| 14215 | 402-P | 1701090 | 2901330 |
| 14229 | 403-P | 1701110 | 2901330 |
| 14243 | 404-P | 1700160 | 2901340 |
| 14257 | 406-P | 1700180 | 2901340 |
| 14271 | 408-P | 1700210 | 2901340 |
| 14285 | 410-P | 1700210 | 2901340 |
| 14299 | 412-P | 1700230 | 2901340 |
| SPARK-DUTY 400CS HI-VIS SAFETY | | | |
| 20479 | H402CS | 1701090 | 2901330 |
| 20481 | H403CS | 1701110 | 2901330 |
| 20483 | H404CS | 1700160 | 2901340 |
| 20484 | H406CS | 1700180 | 2901340 |
| 20485 | H408CS | 1700210 | 2901340 |
| 20486 | H410CS | 1700210 | 2901340 |
| 20487 | H412CS | 1700230 | 2901340 |

| Stock No. | Model | Spindle Assembly Stock No. | Perma-Pad® with Ring Stock No. |
|----------------------------------|-------|----------------------------|--------------------------------|
| 4400 SERIES DEEP THROAT | | | |
| 14350 | 4404 | 1700150 | 2901310 |
| 14375 | 4406 | 1700170 | 2901310 |
| 14400 | 4408 | 1700170 | 2901310 |
| 800 SERIES STANDARD DEPTH | | | |
| 14714 | 802 | 1701080 | 2907920 |
| 14728 | 803 | 1701160 | 2907920 |
| 14742 | 804 | 1700750 | 2901320 |
| 14756 | 806 | 1700740 | 2901320 |
| 14770 | 808 | 1700190 | 2907930 |
| 14784 | 810 | 1700190 | 2907930 |
| 14798 | 812 | 1700630 | 2907930 |



ANGLE CLAMPS

90° CLAMPING



SELF CENTERING JAW



VERSATILE MOUNTING SLOTS



COPPER PLATED SPINDLE
(64000 & 64002 ONLY)

FEATURES

HEAVY DUTY FRAME:

- The 90° angle clamp is made of high-quality cast iron (SKUs 64000 and 64002) or solid aluminum construction (SKU 44324)

VERSATILE MOUNTING SLOTS:

- Slotted holes are provided in the base for convenient workbench mounting

PRECISION:

- Work surfaces (including base) are milled for added precision

IDEAL FOR

- Welding
- Woodworking
- Light Industrial



SPECIALTY CLAMPS



EXTRA DEEP STEEL PIPE CLAMP

- Ideal for any applications where extra deep-reach is required
- Moveable and stationary parts are made of heavy-duty, ductile cast iron for added strength
- Multiple disc clutch provides sliding jaws with instant adjustment, secure hold and quick release
- 2-Piece design universal fit for any 3/4" pipe

REGULAR-DUTY I BAR CLAMPS

- A rapid acting powerful clamp designed and constructed for hard, everyday production work
- Patented, quick action, no slip clutches are 3/4" apart and formed in the web for greater bar strength
- High strength ductile slide cannot slip or bind, easily released
- Steel handle, with comfortable wood crank handle for fast clamping
- Bar dimension is 7/16" x 1-1/2" x 5/32", screw diameter is 5/8"

| Stock No. | Model | Capacity Miter (in.) | Jaw Height (in.) | Jaw Length (in.) | Net Weight (lbs.) |
|--|--------|----------------------|------------------|------------------|-------------------|
| HEAVY-DUTY STEEL ANGLE CLAMPS | | | | | |
| 64000 | AC-325 | 3-11/32 | 1-3/8 | 4-1/8 | 11 |
| 64002 | AC-326 | 4-3/8 | 2-3/8 | 4-1/8 | 21 |
| REGULAR-DUTY ALUMINUM ANGLE CLAMP | | | | | |
| 44324 | AC-324 | 2-3/4 | 1-3/8 | 2-1/4 | 3 |

| Stock No. | Pipe Size (in.) | Clamp Face (in.) | Net Weight (lbs.) |
|------------------------------|-----------------|------------------|-------------------|
| EXTRA DEEP PIPE CLAMP | | | |
| 14870 | 3/4 | 2 x 1-3/4 | 8 |

| Stock No. | Bar Length (ft.) | Throat Depth (in.) | Clamp Face (in.) | Clamping Force (lbs.) | Net Weight (lbs.) |
|---------------------|------------------|--------------------|------------------|-----------------------|-------------------|
| I BAR CLAMPS | | | | | |
| 21801 | 2 | 1-13/16 | 1-7/8 | 6,000 | 8 |
| 21803 | 3 | 1-13/16 | 1-7/8 | 6,000 | 8 |
| 21804 | 4 | 1-13/16 | 1-7/8 | 6,000 | 10 |
| 21805 | 5 | 1-13/16 | 1-7/8 | 6,000 | 13 |
| 21806 | 6 | 1-13/16 | 1-7/8 | 6,000 | 14 |





WILTON B.A.S.H.®

THE WORLD'S MOST DURABLE STRIKING TOOLS

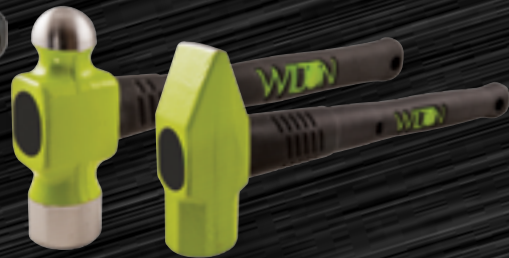
At Wilton®, we are on a never-ending journey to create the highest quality, most indestructible tools on the market. On this journey we've managed to design patents for the world's most durable hammers with Unbreakable® Handle Technology, revolutionary design, and engineered no-slip rubber grip.



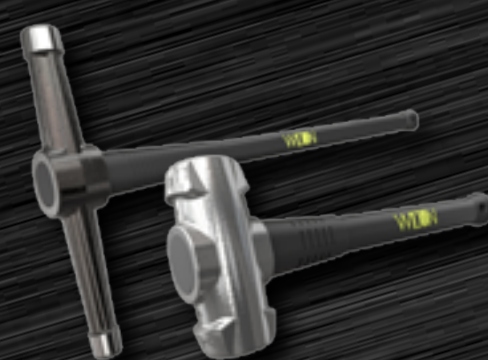
**WILTON B.A.S.H.®
SLEDGE HAMMERS**



**WILTON B.A.S.H.®
BRASS HAMMERS**



**WILTON B.A.S.H.®
BALL & CROSS PEIN**



**WILTON B.A.S.H.®
GRADE B SLEDGE
HAMMERS & SPIKE MAUL**



**WILTON B.A.S.H.®
SPIKE & SPLITTING
MAULS**



**WILTON B.A.S.H.®
DEAD BLOW
HAMMERS**



BAD ASS... & WE'LL PROVE IT

400% TOUGHER...

STRIKE AFTER STRIKE THE RESULTS SPEAK FOR THEMSELVES

THE WORLD'S MOST DURABLE STRIKING TOOLS

- A: UNBREAKABLE® HANDLE TECHNOLOGY**
STEEL CORE DESIGN PREVENTS BREAKING DURING OVERSTRIKES
- B: SAFETY PLATE**
LOCKS HEAD FIRMLY TO HANDLE ELIMINATING DISLODGING
- C: NO-SLIP GRIP**
TEXTURED HANDLE FOR SECURE GRIP WHILE STRIKING
- D: TRADEMARK GREEN HEAD**
HI-VIS, DROP FORGED 46 HRC HEAD ENDURES THE MOST DEMANDING APPLICATIONS AND ADDS INSTANT IDENTIFICATION



OVERSTRIKE TEST*

Number of mechanical overstrikes before handle breaks



FLAT HEAD
CONVENIENTLY DESIGNED TO STAND UPRIGHT FOR EASY REACH



ANTI-VIBE NECK
ERGONOMICALLY DESIGNED TO PREVENT INJURY FROM REPEATED JOB SITE USE



LANYARD HOLE
SAFELY SECURE SLEDGE HAMMER TO YOUR WRIST

* Results based on independent laboratory testing. Chart is for visual representation only.

B.A.S.H.[®] SLEDGE HAMMERS

THE WORLD'S MOST DURABLE SLEDGE HAMMER



B.A.S.H.[®] SLEDGE HAMMER



B.A.S.H.[®] SOFT FACE



UNBREAKABLE[®]
HANDLE TECHNOLOGY



SAFETY PLATE



ANTI-VIBE NECK

DURABILITY & SAFETY FEATURES

UNBREAKABLE[®] HANDLE TECHNOLOGY:

- Steel core eliminates breaking during overstrikes

TRADEMARK GREEN HEAD :

- Patented hi-vis drop forged 46 HRC head endures the most demanding applications

SAFETY PLATE:

- Secures head to handle preventing head from dislodging

ANTI-VIBE NECK:

- Thick, tapered neck absorbs vibration reducing worker fatigue

NO-SLIP GRIP:

- Vulcanized rubber handle for secure grip while striking

LANYARD HOLE:

- Safely secure hammer to wrist or stationary object

IDEAL FOR

- Demolition Work
- Fracturing Stone and Concrete
- Driving Fence Posts
- Police, Fire & Rescue

| Stock No. | Head Size (lbs.) | Handle Size (in.) | Net Weight (lbs.) |
|---|------------------|-------------------|-------------------|
| B.A.S.H.[®] SLEDGE HAMMERS (46 HRC) | | | |
| 20212 | 2-1/2 | 12 | 4 |
| 20412 | 4 | 12 | 5 |
| 20416 | 4 | 16 | 6 |
| 20424 | 4 | 24 | 6 |
| 20616 | 6 | 16 | 8 |
| 20624 | 6 | 24 | 9 |
| 20630 | 6 | 30 | 10 |
| 20636 | 6 | 36 | 11 |
| 20816 | 8 | 16 | 11 |
| 20824 | 8 | 24 | 11 |
| 20830 | 8 | 30 | 12 |
| 20836 | 8 | 36 | 13 |

| Stock No. | Head Size (lbs.) | Handle Size (in.) | Net Weight (lbs.) |
|---|------------------|-------------------|-------------------|
| B.A.S.H.[®] SLEDGE HAMMERS (46 HRC) | | | |
| 21016 | 10 | 16 | 13 |
| 21024 | 10 | 24 | 13 |
| 21030 | 10 | 30 | 15 |
| 21036 | 10 | 36 | 15 |
| 21224 | 12 | 24 | 16 |
| 21230 | 12 | 30 | 17 |
| 21236 | 12 | 36 | 18 |
| 21424 | 14 | 24 | 18 |
| 21430 | 14 | 30 | 19 |
| 21436 | 14 | 36 | 20 |
| 22024 | 20 | 24 | 24 |
| 22030 | 20 | 30 | 25 |
| 22036 | 20 | 36 | 27 |

| Stock No. | Head Size (lbs.) | Handle Size (in.) | Net Weight (lbs.) |
|---|------------------|-------------------|-------------------|
| B.A.S.H.[®] SOFT FACE SLEDGE HAMMERS (30 HRC) | | | |
| 40212 | 2-1/2 | 12 | 4 |
| 40412 | 4 | 12 | 5 |
| 40416 | 4 | 16 | 6 |
| 40624 | 6 | 24 | 9 |
| 40636 | 6 | 36 | 11 |
| 40824 | 8 | 24 | 11 |
| 40836 | 8 | 36 | 11 |
| 41036 | 10 | 36 | 15 |
| 41236 | 12 | 36 | 18 |
| 41436 | 14 | 36 | 20 |

IDEAL FOR

- Maintenance on hard metal surfaces
- Mining
- Cutting Tools



B.A.S.H.[®] GRADE B SLEDGE HAMMERS & SPIKE MAUL

THE WORLD'S MOST DURABLE SLEDGE HAMMER



**GRADE B
ALLOY**

GRADE B SPECIFICATIONS

- Sledge Hammers and Spike Maul designed in-line with AREMA plan 13-08 and 3-08 respectively
- Extending the life of the tool, Grade B striking tools use harder alloy (51-55 HRC) and receive a deeper heat treatment permitting heads to be redressed.
- Manufactured with production with date codes on both the head and the handle in accordance with AREMA standards.
- More contoured striking face reduces material chip off.

IDEAL FOR

- Removing & Installing Rail Anchors
- Driving Railroad Spikes
- Performing Railway Maintenance



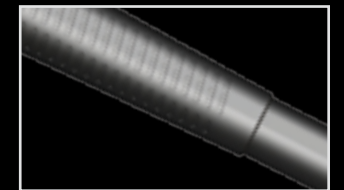
**UNBREAKABLE[®]
HANDLE TECHNOLOGY**



SAFETY PLATE



ANTI-VIBE NECK



NO-SLIP GRIP

| Stock No. | Head Size (lbs.) | Handle Size (in.) | Net Weight (lbs.) |
|--|------------------|-------------------|-------------------|
| B.A.S.H.[®] GRADE B SLEDGE HAMMERS (51-55 HRC) | | | |
| 20212B | 2-1/2 | 12 | 4 |
| 20416B | 4 | 16 | 6 |
| 20630B | 6 | 30 | 10 |
| 20830B | 8 | 30 | 12 |
| 21036B | 10 | 36 | 15 |
| 21236B | 12 | 36 | 18 |
| B.A.S.H.[®] GRADE B SPIKE MAUL (51-55 HRC) | | | |
| 31036B | 10 | 36 | 14 |



B.A.S.H.[®] BRASS SLEDGE HAMMERS

THE WORLD'S MOST DURABLE



UNBREAKABLE[®] HANDLE TECHNOLOGY



SAFETY PLATE



ANTI-VIBE NECK



NON-SPARKING BRASS HEAD

B.A.S.H.[®] BALL & CROSS PEIN HAMMERS

THE WORLD'S MOST DURABLE



BALL PEIN

CROSS PEIN



UNBREAKABLE[®] HANDLE TECHNOLOGY



SAFETY PLATE



ANTI-VIBE NECK

DURABILITY & SAFETY FEATURES

UNBREAKABLE[®] HANDLE TECHNOLOGY:

- Steel core eliminates breaking during overstrikes

BRASS HEAD :

- Non-sparking for use near combustible materials and non-marring to reduce work damage

SAFETY PLATE:

- Secures head to handle preventing head from dislodging

ANTI-VIBE NECK:

- Thick, tapered neck absorbs vibration reducing worker fatigue

NO-SLIP GRIP:

- Vulcanized rubber handle for secure grip while striking

LANYARD HOLE:

- Safely secure hammer to wrist or stationary object

| Stock No. | Head Size (lbs.) | Handle Size (in.) | Net Weight (lbs.) |
|--|------------------|-------------------|-------------------|
| B.A.S.H.[®] BRASS SLEDGE HAMMERS | | | |
| 90212 | 2.5 | 12 | 4 |
| 90412 | 4 | 12 | 5 |
| 90416 | 4 | 16 | 6 |
| 90616 | 6 | 16 | 8 |
| 90816 | 8 | 16 | 10 |
| 90830 | 8 | 30 | 12 |

IDEAL FOR

- Use near combustible materials
- Where surface protection is required
- Oil & gas
- Mining
- Aerospace



HOLDING STRONG SINCE 1941

DURABILITY & SAFETY FEATURES

UNBREAKABLE[®] HANDLE TECHNOLOGY:

- Steel core eliminates breaking during overstrikes

SAFETY PLATE:

- Secures head to handle preventing head from dislodging

ANTI-VIBE NECK:

- Thick, tapered neck absorbs vibration reducing worker fatigue

NO-SLIP GRIP:

- Vulcanized rubber handle for secure grip while striking

TRADEMARK GREEN HEAD:

- Patented hi-vis drop forged 46 HRC head endures the most demanding applications

LANYARD HOLE:

- Safely secure hammer to wrist or stationary object

IDEAL FOR

- Light Forging
- Bending
- Forming
- Peining



WILTONTOOLS.COM

B.A.S.H.[®] DEAD BLOW HAMMERS

THE WORLD'S MOST DURABLE



DEAD BLOW



SOFT FACE



SPARK-RESISTANT

B.A.S.H.[®] SPIKE & SPLITTING MAULS

THE WORLD'S MOST DURABLE



UNBREAKABLE[®] HANDLE TECHNOLOGY



SAFETY PLATE



ANTI-VIBE NECK

DURABILITY & SAFETY FEATURES

DEAD BLOW:

- Eliminates bounce back when striking hardened surfaces

SPARK-RESISTANT:

- Safe for use near combustible materials - no exposed metal on face, head or shaft

SOFT FACE:

- Helps prevent marring

UNBREAKABLE[®] HANDLE TECHNOLOGY:

- Steel core eliminates breaking during overstrikes

ERGONOMIC HANDLE:

- Shaped and thickened for improved comfort and less vibration

NO-SLIP GRIP:

- Vulcanized rubber handle for secure grip while striking

LANYARD HOLE:

- Safely secure hammer to wrist or stationary object

| Stock No. | Hammer Weight (lbs.) | Handle Size (in.) |
|---|----------------------|-------------------|
| B.A.S.H.[®] DEAD BLOW HAMMERS | | |
| 55114 | 1-1/2 | 14 |
| 55214 | 2 | 14 |
| 55314 | 3 | 14 |
| 55416 | 4 | 16 |
| 55830 | 8 | 30 |



IDEAL FOR

- Automotive
- Metal Fabrication
- Oil and Mining
- Wood and Metal Assembly
- Aerospace Industry

DURABILITY & SAFETY FEATURES

UNBREAKABLE[®] HANDLE TECHNOLOGY:

- Steel core eliminates breaking during overstrikes

SAFETY PLATE:

- Secures head to handle preventing head from dislodging

ANTI-VIBE NECK:

- Thick, tapered neck absorbs vibration reducing worker fatigue

NO-SLIP GRIP:

- Vulcanized rubber handle for secure grip while striking

TRADEMARK GREEN HEAD:

- Patented hi-vis drop forged 46 HRC head endures the most demanding applications

LANYARD HOLE:

- Safely secure hammer to wrist or stationary object

| Stock No. | Head Size (lbs.) | Handle Size (in.) | Net Weight (lbs.) |
|--|------------------|-------------------|-------------------|
| B.A.S.H.[®] SPIKE MAUL | | | |
| 31036 | 10 | 36 | 14 |
| B.A.S.H.[®] SPLITTING MAUL | | | |
| 50630 | 6 | 30 | 9 |
| 50636 | 6 | 36 | 10 |
| 50830 | 8 | 30 | 11 |
| 50836 | 8 | 36 | 11 |



IDEAL FOR

- Driving Railroad Spikes (*Spike Maul*)
- Splitting Wood (*Splitting Maul*)
- Striking Wedges (*Splitting Maul*)

B.A.S.H.[®] 3 PC HAMMER KIT

THE WORLD'S MOST DURABLE



DURABILITY & SAFETY FEATURES

UNBREAKABLE[®] HANDLE TECHNOLOGY:

- Steel core eliminates breaking during overstrikes

SAFETY PLATE:

- Secures head to handle preventing head from dislodging

ANTI-VIBE NECK:

- Thick, tapered neck absorbs vibration reducing worker fatigue

NO-SLIP GRIP:

- Vulcanized rubber handle for secure grip while striking

TRADEMARK GREEN HEAD:

- Patented hi-vis drop forged 46 HRC head endures the most demanding applications

LANYARD HOLE:

- Safely secure hammer to wrist or stationary object

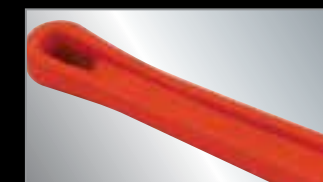
| Stock No. | Qty. | Description |
|--|------|--|
| B.A.S.H.[®] 3-Piece Hammer Kit 3PCBASH | | |
| 20212 | 1 | 2-1/2 Lb. Head, 12" Handle Hammer |
| 32414 | 1 | 24 Oz. Head, 14" Handle Ball Pein Hammer |
| 30216 | 1 | 2 Lb. Head, 16" Handle Cross Pein Hammer |
| - | 1 | Protective Carrying Case |

DUCTILE IRON & ALUMINUM PIPE WRENCHES

HEAVY-DUTY AND BUILT TO LAST



DROP FORGED JAWS



DUCTILE CAST IRON HANDLE



HEAVY-DUTY ADJUSTABLE RING



LIGHTWEIGHT ALUMINUM BODY

DUCTILE FEATURES

JAW CONSTRUCTION

- Drop forged upper and lower jaws

JAW TYPE:

- Floating hook jaw with spring suspension for easier gripping

RING AND HANDLE:

- Heavy-Duty adjustable ring and ductile cast iron handle

CAPACITY:

- 1.5" to 5"

| Stock No. | Description | Pipe Capacity (in.) | Net Weight (lbs.) |
|--|-------------------------|---------------------|-------------------|
| WILTON[®] DUCTILE IRON PIPE WRENCHES | | | |
| 38110 | 10" Ductile Pipe Wrench | 1-1/2 | 2 |
| 38114 | 14" Ductile Pipe Wrench | 2 | 4 |
| 38118 | 18" Ductile Pipe Wrench | 2-1/2 | 6 |
| 38124 | 24" Ductile Pipe Wrench | 3 | 9 |
| 38136 | 36" Ductile Pipe Wrench | 5 | 21 |

ALUMINUM FEATURES

HANDLE CONSTRUCTION

- High quality cast aluminum body

JAWS:

- Drop forged upper and lower jaws

ADJUSTING RING

- Heavy-Duty adjustable ring

CAPACITY:

- 1.5" to 5"

| Stock No. | Description | Pipe Capacity (in.) | Net Weight (lbs.) |
|--|--------------------------|---------------------|-------------------|
| WILTON[®] ALUMINUM PIPE WRENCHES | | | |
| 38210 | 10" Aluminum Pipe Wrench | 1-1/2 | 1 |
| 38214 | 14" Aluminum Pipe Wrench | 2 | 2 |
| 38218 | 18" Aluminum Pipe Wrench | 2-1/2 | 4 |
| 38224 | 24" Aluminum Pipe Wrench | 3 | 6 |
| 38236 | 36" Aluminum Pipe Wrench | 5 | 11 |



HOLDING STRONG SINCE 1941

WILTONTOOLS.COM