



NEW PRODUCTS EDITION

CATALOG 163 - ADDENDUM

HAND TOOLS

JOB SITE

ELECTRICAL TESTING & INSTALLATION

CONSTRUCTION & STRUCTURAL TOOLS



[Click Here](#)

to view the full line catalog

Electrical • Data Com • HVAC • Plumbing • Telecom • Utility
Heavy Infrastructure • Steel and Concrete Construction

www.kleintools.com

TABLE OF CONTENTS

WARRANTY04

WARNINGS05

HAND TOOLS

JOB SITE



HAND TOOLS

Pliers.....7
Ironworker's Pliers7

Strippers, Cutters, & Crimpers 8-9
Wire Strippers.....8
Cable Cutters.....9
Pocket Knife9

Drivers & Wrenches... 10-14
Screwdrivers & Nut Drivers..... 10-12
Impact Sockets 13
Lineman's Wrenches ... 14
Hammer..... 14

Fish Tapes..... 15

Laser Levels 16

JOB SITE

Insulated Tools 18-19

Personal Protection & Safety Equipment20-27
Safety Helmets 20-21
Safety Helmet Visors... 21
Hard Hats.....22-23
Safety Glasses..... 24
Safety Vests 25
Warming & Cooling Bands 25
Cooling Towel 25
Masks & Respirators... 26
Knee Pads 26
Gloves..... 27

Illumination 28-30
Flashlights 28
Headlamps.....28-30

Accessories..... 31
Tumbler 30
Rechargeable Speaker.. 31
Rechargeable Fan..... 31

Tool Storage.. 32-33
Modular Pouches 32
Buckets 33

ELECTRICAL TESTING & INSTALLATION TOOLS

Voice/Data/Video 35-37
Punchdown Tools 35
Cable Stapler & Staples..... 35
Tone & Probe Test & Trace Kit 36
Scout® Pro 3 Testers... 37

Test & Measurement 38-42
Clamp Meters 38-39
Magnetic Hanger 39
Testing Kits 40
Infrared Thermometer..... 40
Non-Contact Voltage Testers..... 41
Borescope 42
GFCI Receptacle Tester..42
Thermal Imager..... 42

CONSTRUCTION AND STRUCTURAL TOOLS

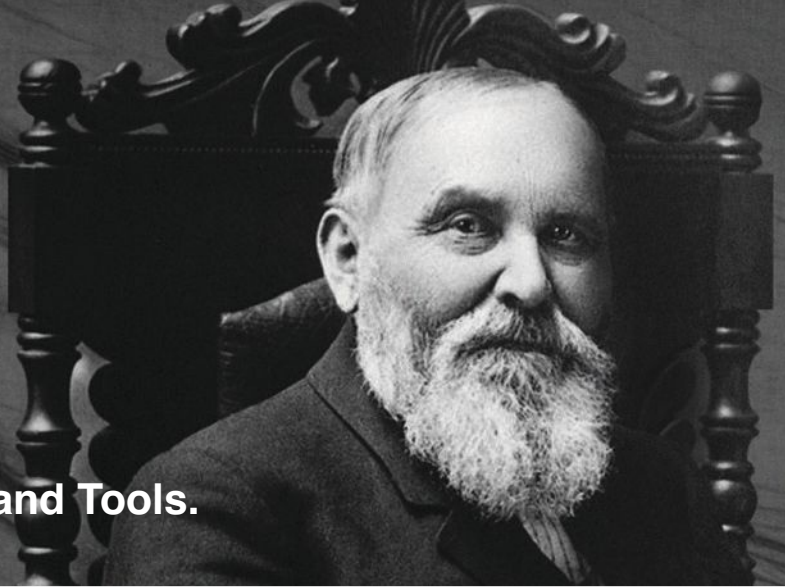
Impact Tools . 44-46
Impact Drill 44
Impact Wrench 45
Impact Sockets..... 46

Grips.....47
Parallel Jaw Grip 47

ELECTRICAL TESTING & INSTALLATION

CONSTRUCTION & STRUCTURAL TOOLS

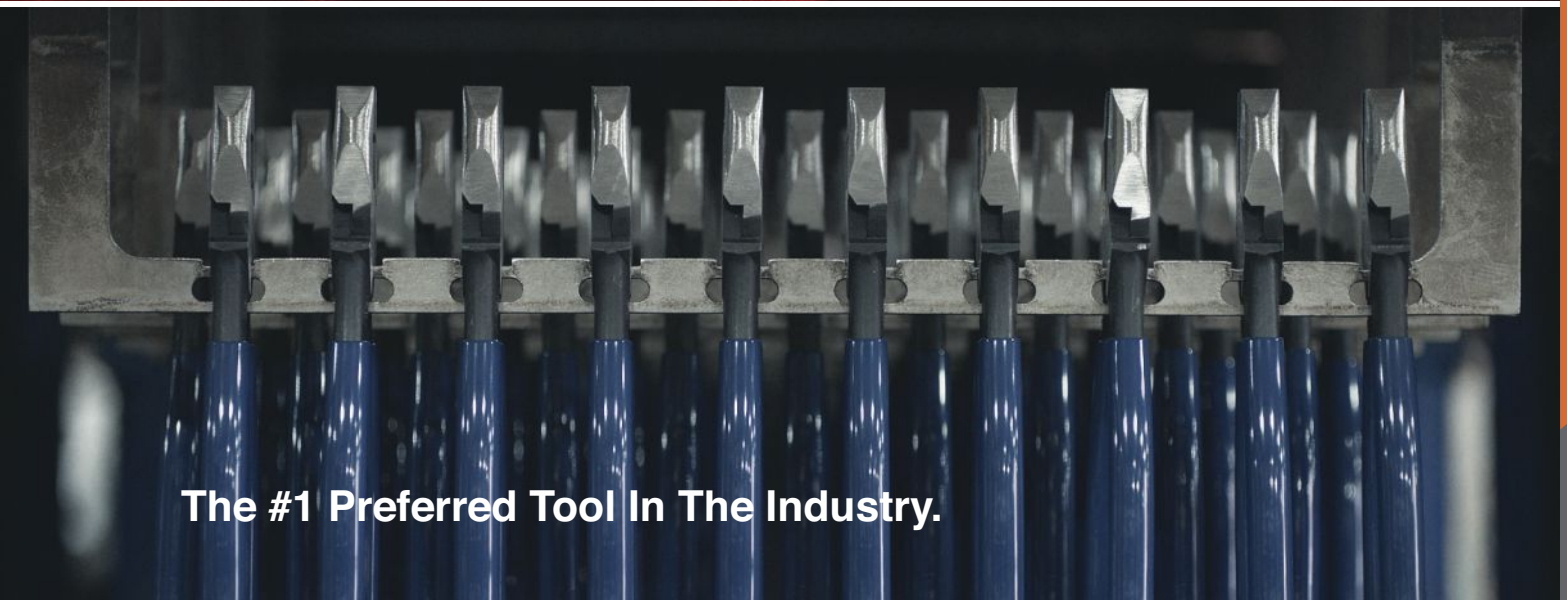
The Founder of Electrical Hand Tools.



Established in America. Still American.



The #1 Preferred Tool In The Industry.



Can other tools say that?



HAND TOOLS

JOB SITE

ELECTRICAL TESTING & INSTALLATION

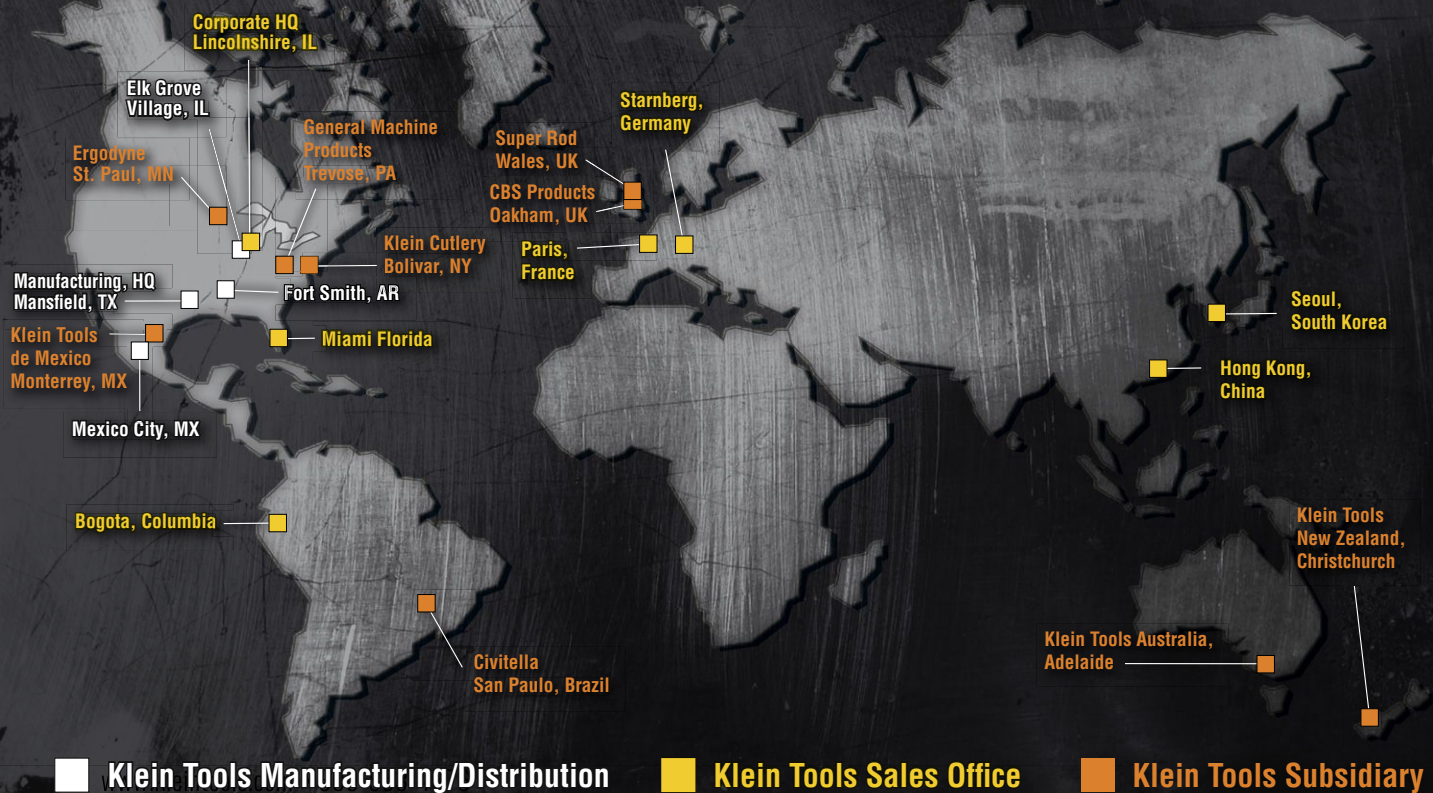
CONSTRUCTION & STRUCTURAL TOOLS

COMPANY HISTORY

Klein Tools was founded in 1857 by an industrious German immigrant, Mathias Klein, who began in the hand tool business when a broken side-cutting pliers was brought to his forge shop by a telegraph lineman. Mathias repaired the pliers by forging and finishing a new half for the tool and riveting it to the old half. Soon the lineman returned because the other original half of the pliers had broken and needed replacement. Mathias forged and finished the second half of the pliers and riveted it to the other replacement half – creating the first complete Klein pliers.

To this day, Klein Tools is proudly owned and managed by the Klein family. Over 160 years of hard work and dedication has earned Klein the reputation of supplying only the finest quality products for users of professional hand tools, Test and Measurement and occupational protective equipment.

Klein Tools continues to expand domestically and internationally to provide quality products to professionals all over the world.



COMMITTED TO AMERICAN MANUFACTURING

FOR OVER 160 YEARS

Klein Tools has remained dedicated to professional tradesmen worldwide, with a commitment to manufacturing the world's finest hand tools right here in America.

These days, it can be hard to find companies that make products you can count on. But that's exactly what you'll get from Klein Tools. We don't just make great products, we make great products that stand up to the demands of the professionals who use them every day. Because our standards are as high as yours, we demand that every one of our hand tools delivers all the performance, durability and precision that you need to get the job done right. And by using only the highest quality materials, superior workmanship, and keeping our manufacturing as close to home as we can, we're able to uphold those rigorous standards.

Klein isn't just the name of our company, it's also our family name, so we have to be proud of everything we make. And since we're an American company that's been family-owned and family-run, since 1857, you know you can count on us to be here tomorrow.

Just pick up a Klein tool and you'll know what all the professionals know... when you buy a Klein, it'll never let you down.

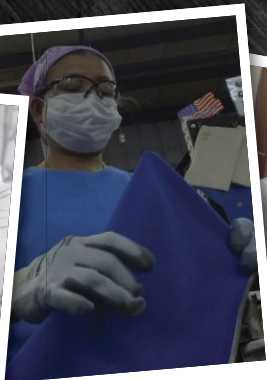
That's why we're the #1 choice of professional electricians in the U.S.



Mansfield, TX



Elk Grove Village, IL



Fort Smith, AR



Mansfield TX Distribution



Bolivar, NY



Treose, PA

LIMITED WARRANTY

Klein Tools, Inc. warrants that the products set forth below will be free from defects in material and workmanship, under normal use for the time frames listed below (unless otherwise noted on the product packaging). At its option, Klein Tools will repair or replace, or refund the purchase price of, any product which fails to conform with this warranty. This warranty does not apply to damage from alterations, abuse, misuse, lack of maintenance, or normal wear and tear of the product. Proof of purchase from an Authorized Klein Tools Distributor is required for all warranty claims. This warranty does not apply to batteries.

All implied warranties, including, without limitation, implied warranties of merchantability and implied warranties of fitness for a particular purpose, are limited in duration to the applicable warranty period listed below.

Some states do not allow limitations on how long an implied warranty lasts, so the above limitation may not apply to you. This warranty is void where prohibited by law, and no claims will be honored where claimed products are controlled by export control or economic sanctions restrictions.

In no event shall Klein Tools be liable for incidental or consequential damages. Some states do not allow the exclusion or limitation of incidental or consequential damages, so the above limitation or exclusion may not apply to you.

This warranty gives specific legal rights, and you may also have other rights which vary from state to state.

THE NORMAL LIFE OF THE PRODUCT

Hand Tools

This warranty explicitly does not cover Specialty Hand Tools. See Klein Commercial and Industrial products warranty.

Tool Pouches, Tool Bags, Tool Belts, Suspenders, Coolers, Soft Storage, Knee Pads

This warranty explicitly does not cover climbing tool belts. See Klein Commercial and Industrial products warranty.

Fish Tapes, Fish Rods, Tape Measures, Levels, Folding Rules

This warranty explicitly does NOT cover cut or deliberately damaged tape, rust or corrosion or foreign material, cracked or broken cases, or bent hooks or bent/missing eyelets.

Flashlights and Illumination

This warranty explicitly does not cover products containing rechargeable batteries.

TWO YEARS FROM THE DATE OF PURCHASE

Electrical Test and Measurement Tools

This warranty explicitly does not cover High Voltage Test and Measurement Tools. See Klein Commercial and Industrial products warranty. Repair service is available for the ET510 Borescope.

ONE YEAR FROM THE DATE OF PURCHASE

Flashlights and Illumination products containing rechargeable batteries.

(including but not limited to Flashlights, Illumination Products,

Audible Entertainment

PRODUCTS WARRANTED TO BE FREE FROM DEFECTS IN MATERIALS AND WORKMANSHIP WHEN DELIVERED TO THE CUSTOMER

Consumables

(including but not limited to Triple-Taps, Drill Bits, Step Drills, Carbide Hole Cutters, Hole saws and Arbors, Saw Blades and Jab Saws, disposable Razor and Knife Blades, Stripper Cartridges, Gloves, Shoe Covers, Replaceable Cutting Inserts, Wire Marker Books, Bits and Blades, Voice/Data/Video Connectors, Klein Chemicals, Hand Cleaners, and Wire Pulling Lubricants)

This warranty explicitly does not cover Specialty Consumables. See Klein Commercial and Industrial products warranty.

WARRANTY RETURNS

All warranty returns require proof of purchase from an Authorized Klein Tools Distributor and must include a Warranty Return Authorization (WRA) number. To obtain the WRA and service under this warranty, visit www.kleintools.com/warranty or contact your Authorized Klein Tools Distributor.

COMMERCIAL AND INDUSTRIAL PRODUCTS WARRANTY

Klein Tools, Inc. warrants that the products set forth below, which are manufactured and sold for commercial or industrial uses, are warranted to be free from defects in materials and workmanship for the periods of time set forth below (unless otherwise noted on the product packaging). **THERE ARE NO IMPLIED WARRANTIES OF MERCHANTABILITY OR FITNESS.** At its option, Klein will repair or replace, or refund the purchase price of, any product which fails to conform with this warranty under normal use and service. This warranty does not apply to damage from alterations, abuse, misuse, lack of maintenance, or normal wear and tear of the product. Proof of purchase from an Authorized Klein Tools Distributor is required for all warranty claims. **In no event shall Klein be liable for incidental or consequential damage.**

THE NORMAL LIFE OF THE PRODUCT

Specialty Hand Tools

(including but not limited to Insulated Tools, Steel And Concrete Construction Tools, Mining and Heavy Industry Tools, Two-Handed Bolt Cutters and Cable Cutters, Torque Tools, Snips, Trimmers, Shears, Telecom Tools, Box Wrenches, Specialty Wrenches, Rebar Hickeys, Cable Benders)

Occupational Protective Equipment

(including but not limited to Climbing Belts, Linemen's Body Belts, Climbers, Climber Pads, Gaffs, Harnesses, Positioning Straps, Lanyards)

Lineman Buckets, Block and Tackle, Lineman Backpacks, Aerial Aprons, Tie Wire Reels

Wire Pulling Grips

TWO YEARS FROM THE DATE OF PURCHASE

High Voltage Electrical Test and Measurement

(including but not limited to HVNCVT-1, HVNCVT-2, HVCT-1)

This warranty does not apply to batteries.

ONE YEAR FROM THE DATE OF PURCHASE

Ratcheting Hand Tools

(including but not limited to Ratcheting Cable Cutters, Ratcheting Bolt Cutters)

Repair service is available for most out of warranty ratcheting hand tools.

Personal Protective Equipment and Safety Products

(including but not limited to Safety Glasses, Hard Caps, Hard Hats, Accessories)

Cordless Power Tool Accessories

(including but not limited to batteries, chargers)

PRODUCTS WARRANTED TO BE FREE FROM DEFECTS IN MATERIALS AND WORKMANSHIP WHEN DELIVERED TO THE CUSTOMER

Specialty Consumables

(including but not limited to Ship Augers, Knockout Punches, Grip Insert Files, Drift Pins, Bull Pins, Punches, Cold Chisels, Wedges)

BATTERY OPERATED TOOLS: HEAVY DUTY HYDRAULIC CRIMPERS, GEAR DRIVEN CABLE CUTTERS, AND IMPACT WRENCH

Five years from the date of purchase — Hydraulics

Three years from date of purchase — Motor, Housing, and Electronics

One year from date of purchase — Moving Parts (including: interchangeable heads and jaws; excluding: specialty consumables)

DeWALT battery packs and chargers are covered by DeWALT's warranty policy. Visit www.dewalt.com or call 1-800-4-DeWALT (1-800-433-9258) for more details.

WARRANTY RETURNS

All warranty returns must include a Warranty Return Authorization (WRA) number. To obtain the WRA and service under this warranty please visit www.kleintools.com/warranty or contact your Authorized Klein Tools Distributor.

Warning Symbols

The following warning symbols are utilized on Klein Tools products and throughout this book to inform of the level and nature of the hazard associated with our products. As a general warning, you should always inspect your tools before each use. Keep tool clean, dry and free of surface contaminants.

	Warning Symbol		Strong Magnetic Field
	Wear Eye Protection		Risk Of Shock
	Do Not Use On Or Near Live Electrical Circuits		For Use on Bare Live Conductor (Clamp Meter)
	Read Instructions Before Use		Laser Warning
	Do Not Use to Pry		Not Personal Protective Equipment
	Do Not Use To Chisel		Do Not Probe Moving Parts
	Do Not Extend Handle Length		Do Not Strike Hammer Faces Together
	Do Not Push Or Hammer		Double Insulated
	Use Safe Work Position		1000 V 1000V Rated

⚠ WARNING: Cancer and reproductive harm – See www.P65Warnings.ca.gov for more information.

PROPER USE GUIDE



RIGHT

RIGHT

RIGHT

RIGHT

WRONG

WRONG

WRONG

WRONG

RIGHT

WRONG

SECTION VI. SCREWDRIVERS

INTRODUCTION

There is a wide variety of screwdrivers available for use in the home and in the professional trades. The most common screwdriver is the flat tip screwdriver. This is the type of screwdriver that is most often used in the home and in the professional trades. The most common screwdriver is the flat tip screwdriver. This is the type of screwdriver that is most often used in the home and in the professional trades.

FIG. 1. Flat tip screwdriver

FIG. 2. Torx screwdriver

FIG. 3. Phillips screwdriver

FIG. 4. Torx screwdriver

FIG. 5. Torx screwdriver

FIG. 6. Torx screwdriver

FIG. 7. Torx screwdriver

FIG. 8. Torx screwdriver

FIG. 9. Torx screwdriver

FIG. 10. Torx screwdriver

FIG. 11. Torx screwdriver

FIG. 12. Torx screwdriver

FIG. 13. Torx screwdriver

FIG. 14. Torx screwdriver

FIG. 15. Torx screwdriver

FIG. 16. Torx screwdriver

FIG. 17. Torx screwdriver

FIG. 18. Torx screwdriver

FIG. 19. Torx screwdriver

FIG. 20. Torx screwdriver

FIG. 21. Torx screwdriver

FIG. 22. Torx screwdriver

FIG. 23. Torx screwdriver

FIG. 24. Torx screwdriver

FIG. 25. Torx screwdriver

FIG. 26. Torx screwdriver

FIG. 27. Torx screwdriver

FIG. 28. Torx screwdriver

FIG. 29. Torx screwdriver

FIG. 30. Torx screwdriver

FIG. 31. Torx screwdriver

FIG. 32. Torx screwdriver

FIG. 33. Torx screwdriver

FIG. 34. Torx screwdriver

FIG. 35. Torx screwdriver

FIG. 36. Torx screwdriver

FIG. 37. Torx screwdriver

FIG. 38. Torx screwdriver

FIG. 39. Torx screwdriver

FIG. 40. Torx screwdriver

FIG. 41. Torx screwdriver

FIG. 42. Torx screwdriver

FIG. 43. Torx screwdriver

FIG. 44. Torx screwdriver

FIG. 45. Torx screwdriver

FIG. 46. Torx screwdriver

FIG. 47. Torx screwdriver

FIG. 48. Torx screwdriver

FIG. 49. Torx screwdriver

FIG. 50. Torx screwdriver

FIG. 51. Torx screwdriver

FIG. 52. Torx screwdriver

FIG. 53. Torx screwdriver

FIG. 54. Torx screwdriver

FIG. 55. Torx screwdriver

FIG. 56. Torx screwdriver

FIG. 57. Torx screwdriver

FIG. 58. Torx screwdriver

FIG. 59. Torx screwdriver

FIG. 60. Torx screwdriver

FIG. 61. Torx screwdriver

FIG. 62. Torx screwdriver

FIG. 63. Torx screwdriver

FIG. 64. Torx screwdriver

FIG. 65. Torx screwdriver

FIG. 66. Torx screwdriver

FIG. 67. Torx screwdriver

FIG. 68. Torx screwdriver

FIG. 69. Torx screwdriver

FIG. 70. Torx screwdriver

FIG. 71. Torx screwdriver

FIG. 72. Torx screwdriver

FIG. 73. Torx screwdriver

FIG. 74. Torx screwdriver

FIG. 75. Torx screwdriver

FIG. 76. Torx screwdriver

FIG. 77. Torx screwdriver

FIG. 78. Torx screwdriver

FIG. 79. Torx screwdriver

FIG. 80. Torx screwdriver

FIG. 81. Torx screwdriver

FIG. 82. Torx screwdriver

FIG. 83. Torx screwdriver

FIG. 84. Torx screwdriver

FIG. 85. Torx screwdriver

FIG. 86. Torx screwdriver

FIG. 87. Torx screwdriver

FIG. 88. Torx screwdriver

FIG. 89. Torx screwdriver

FIG. 90. Torx screwdriver

FIG. 91. Torx screwdriver

FIG. 92. Torx screwdriver

FIG. 93. Torx screwdriver

FIG. 94. Torx screwdriver

FIG. 95. Torx screwdriver

FIG. 96. Torx screwdriver

FIG. 97. Torx screwdriver

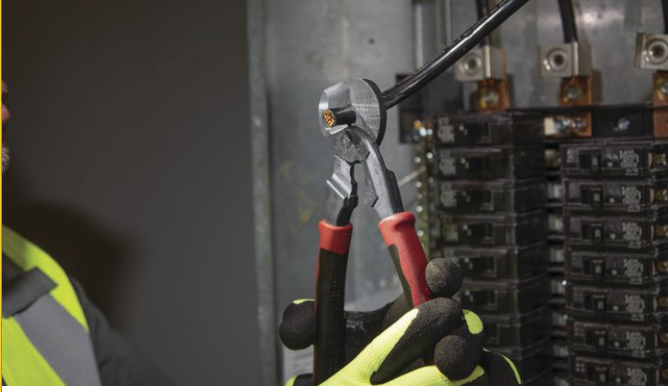
FIG. 98. Torx screwdriver

FIG. 99. Torx screwdriver

FIG. 100. Torx screwdriver

Prepared by **KLEIN TOOLS** in conjunction with the **Hand Tools Institute**. Available from your **Klein distributor** (Cat. No. 98016).

Specifications of all products in this catalog are subject to change without notice. Dimensions shown for all forged products in this catalog are as precisely accurate as possible, but subject to very slight variations that are unavoidable in forging and grinding operations. Dimensions of Klein forged tools and all other tools and equipment are always within commercial tolerances recognized for such products.



HAND TOOLS

Klein specializes in the making of the world's finest tools...tools that professionals have trusted for more than 160 years.

Klein pliers, strippers, cutters, crimpers and other hand tools are designed to get jobs done with precision and quality. They are job-matched for every kind of work you do; designed and built with exceptional quality standards in a tradition that dates back to 1857.

- Ironworker's Pliers
- Wire Stripping/Cutting
- Cable Cutting/Stripping
- Knives
- Screwdrivers/Nut Drivers
- Impact Sockets
- Ratcheting Wrenches
- Hammers
- Fish Tapes
- Levels

IRONWORKER'S PLIERS

HAND TOOLS

JOB SITE

ELECTRICAL TESTING & INSTALLATION

CONSTRUCTION & STRUCTURAL TOOLS

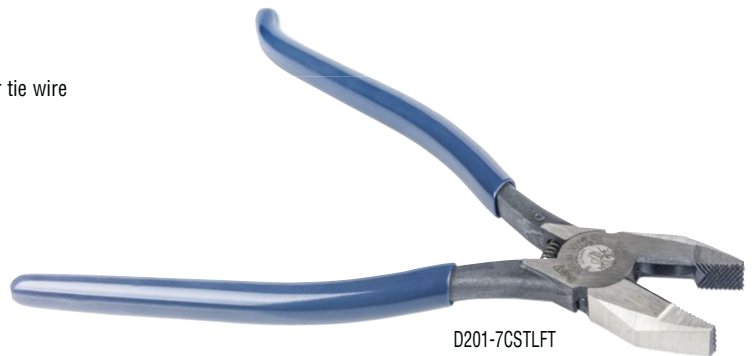
FORGED STEEL

from Klein's US-made, proprietary blend



Left Handed Ironworker's Pliers

- Designed specifically for lefties to twist and cut soft annealed rebar tie wire
- Hook bend in left handle for added grip and leverage
- Heavy-duty knurled jaws
- Spring-loaded action for self-opening



D201-7CSTLFT

Cat. No.	Overall Length	Jaw Length	Jaw Width	Jaw Thickness	Knife Length	Handle Color	Handle Finish
D201-7CSTLFT	9.19" (23.3 cm)	1.281" (3.3 cm)	1.156" (2.9 cm)	0.5" (1.3 cm)	0.625" (1.6 cm)	Blue	Plastic

See page 19 for Insulated Models   1000 V



WIRE STRIPPERS

**Twist up to
3 Wires**

KLEIN-KURVE®



FORGED STEEL

from Klein's US-made proprietary blend

Klein-Kurve® Heavy-Duty Wire Strippers

- Strip 8-18 AWG solid and 10-20 AWG stranded wire
- Large knurled jaws for twisting, grabbing and looping wire; twists up to 3 wires at a time
- Shear cutting knives (K12035) for easier cutting of copper wire and larger material such as Romex® cable (all sizes) and other nonmetallic (type NM) sheathed cable
- Screw shearing for 6-32 and 8-32 screws
- K12065CR crimps non-insulated connectors, lugs and terminals for 10-20 AWG stranded wire
- High leverage design for improved performance



Crimps non-insulated connectors, lugs and terminals



K12035



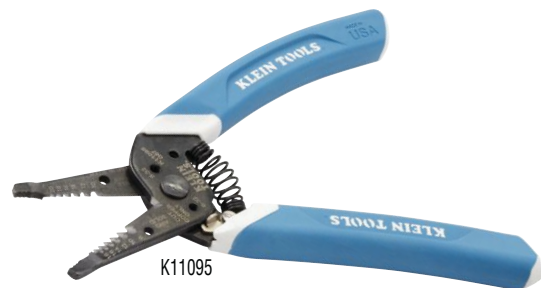
K12065CR

Cat. No.	Strips and Cuts	Screw Shearing	Crimping Capacity	Overall Length	Handle Color
K12035	8-18 AWG Solid; 10-20 AWG Stranded	6-32 and 8-32	—	8.41" (21.4 cm)	Blue/Gray
K12065CR			10-20 AWG Stranded	8.3" (21.1 cm)	Blue/White

*Romex® is a registered trademark of Southwire Company

Klein-Kurve® Wire Stripper / Cutter

- Six stripping holes for 8-18 AWG solid and 10-20 AWG stranded wire
- Updated lock that tucks nicely out of the way
- Narrow head geometry gets into hard to reach places
- Precision, shear-like blades for clean cuts and dual wire looping holes
- Coil spring for fast self-opening action



K11095

Cat. No.	Strips and Cuts	Screw Shearing	Overall Length	Handle Color
K11095	8-18 AWG Solid; 10-20 AWG Stranded	6-32 and 8-32	7.4" (19 cm)	Blue/White



HIGH-LEVERAGE CABLE CUTTERS



J63225N has an integrated stripping hole for 1/0 and 2/0 cable

FORGED STEEL
from Klein's US-made proprietary blend



High-Leverage Cable Cutters

- Cut aluminum, copper and communications cable
- Cable-gripping shear-type jaws require 30% less force needed to cut as compared to Klein's 63050 model
- The compact, yet powerful, 63215 cutter cuts and removes aluminum metal clad (MC) cable jacket
- Forged, custom, US-made tool steel for maximum durability
- Hot-riveted joint ensures smooth action and no handle wobble



Cat. No.	Cutting Capacity	Strips	Overall Length	Handle Color	Handle Finish
63225	4/0 Aluminum, 2/0 Soft Copper, 100-Pair 24 AWG Communications Cable	—	9.07" (23 cm)	Red	Plastic-Dipped
J63225N		1/0 and 2/0 cable	9.3" (24 cm)	Red/Black	Journeyman™
63215	Up to 1/0 AWG Aluminum and Copper	—	6.6" (16.7 cm)	Red	Plastic-Dipped

Electrician's Bearing-Assisted Open Pocket Knife

- Easy one-handed, bearing-assisted opening
- Drop Point blade
- Strips 14-10 AWG solid, 16-12 AWG stranded wire when the blade is closed
- Hole at the base of the blade for looping wire
- Rugged aluminum handle and a frame lock to secure the blade open
- Ambidextrous flip lever for easy one finger opening



Cat. No.	Description	Blade Type	Blade Length	Blade Material	Handle Material	Length Closed	Overall Length
44228	Bearing-Assisted Open Pocket Knife	Drop Point	2.95" (6.4 cm)	Stainless Steel	Aluminum	4.23" (10.7 cm)	7.18" (18.2 cm)

WARNING: Blades are intended for cutting only, and should be handled and disposed of with care. Bending the blade can cause it to break, possibly resulting in bodily injury. Check local law on legality of selling, possessing, or carrying these knives. Check local law on legality of selling, possessing, or carrying this knife.



SCREWDRIVERS NUT DRIVERS



11-in-1 Magnetic Screwdriver / Nut Driver

- Strong, rare earth magnets securely hold bits and fasteners
- Blast-finished bit tips provide a firm hold and reduce cam-out
- Interchangeable shaft for quick and easy switch out
- Cushion-Grip handle for greater torque and comfort
- The following replacement bits are available: see Cat. No. 32482 (#1 Phillips and 3/16" Slotted), Cat. No. 32483 (#2 Phillips and 1/4" Slotted), Cat. No. 32484 (#1 Square and #2 Square), and Cat. No. 32485 (T10 TORX® and T15 TORX®)



Cat. No.	Nut Driver Sizes	Phillips Bits	Slotted Bits	Square Bits	TORX® Bits	Shank Length	Handle Color	Overall Length
32500MAG	3/8", 5/16", 1/4"	#1, #2	1/4" (0.6 cm), 3/16" (0.5 cm)	#1, #2	T10, T15	3" (7.6 cm)	Yellow/Black	7.8" (19.8 cm)

TORX® is a registered trademark of Acument Intellectual Properties, LLC.

See page 19 for Insulated Models   1000 V



Multi-Bit Adjustable Length Screwdrivers

- Adjust the length of the blade for easier access
- Impact rated blade can be removed for use as an impact driver attachment
- Industrial-strength bits are conveniently housed in the handle
- Stainless steel bit holder contains powerful rare earth magnets for securing bits and fasteners
- Cushion-grip handle for maximum comfort and spin cap for optimum and precise control



Cat. No.	Description	Nut Driver Sizes	Phillips Bits	Slotted Bits	Square Bits	Combo Bits	TORX® Bits	Shank Length	Handle Color	Overall Length
32303	14-in-1 Multi-Bit Adjustable Length Screwdriver	1/4" (0.6 cm)	#0, #1, #2, #3	3/16" (0.5 cm), 1/4" (0.6 cm)	#1, #2	#2	T10, T15, T20, T25	1.0" to 4.0" (2.5 to 10.1 cm)	Black/Yellow	9.73" (24.7 cm)
32308	8-in-1 Multi-Bit Adjustable Length Stubby Screwdriver	1/4" (0.6 cm)	#1, #2, #3	3/16" (0.5 cm), 1/4" (0.6 cm)	#1, #2	—	—	1" to 2.75" (2.5 to 7 cm)	Black/Yellow	4.81" (12.2 cm)

TORX® is a registered trademark of Acument Intellectual Properties, LLC.

Multi-Bit Ratcheting Screwdriver and Multi-Bit Tamperproof Screwdriver

- On-board storage of industrial-strength bits
- Spin Caps for optimum and precise control
- Cushion-Grip handle for great torque and maximum comfort
- Collar sets ratchet direction at forward, fixed and reverse (Cat. No. 32305)



Cat. No.	Description	Nut Driver Sizes	Phillips Bits	Slotted Bits	Square Bits	Hex Bits	Combo Bits	TORX® Bits	Other Bits	Shank Length	Handle Color	Overall Length
32305	15-in-1 Multi-Bit Ratcheting Screwdriver	1/4" (0.6 cm)	#0, #1, #2, #3	3/16" (0.5 cm), 1/4" (0.6 cm)	#1, #2	—	#1, #2	T10, T15, T20, T25	—	3.5" (8.9 cm)	Black/Yellow	8.71" (22.1 cm)
32307	27-in-1 Multi-Bit Tamperproof Screwdriver	1/4" (0.6 cm)	—	—	—	Tamperproof: 3/32", 7/64", 1/8", 9/64", 5/32" (4 mm), 3/16", 2 mm, 2.5 mm, 5 mm, 3 mm	—	Tamperproof: T7, T8, T10, T15, T20, T25, T27, T30, T40	TORQ-SET®: TS6, TS8, TS10; Tamperproof Spanner: SP4, SP6, SP8, SP10	3.38" (8.6 cm)	Black/Yellow	8.49" (21.6 cm)

*TORQ-SET® is a registered trademark of Phillips Screw Co; TORX® is a registered trademark of Acument Intellectual Properties, LLC

Slim-Profile Mini Ratchet Set

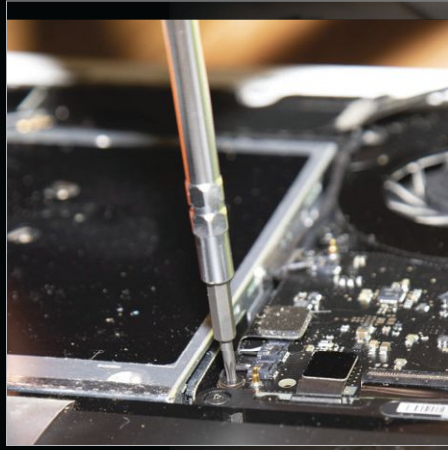
- Includes 1/4" and 5/16" nut drivers, a 1/4" adapter and four drive bits: #1 and #2 Phillips; 3/16" and 1/4" slotted
- Slim-profile 1/4" dual-drive head and socket adapter for more versatility
- The 72-tooth ratchet only needs a 5° sweep for tight areas
- High-strength, steel construction increases torque and tool life
- Ring magnet and bit clip for better bit retention



Cat. No.	Drive Size	Overall Length
65200	1/4" Dual-Drive	4.22" (11 cm)



PRECISION SCREWDRIVERS



All-in-1 Precision Screwdriver Set with Case

- Precision screwdriver set includes 39 bits for various applications including repair of most Apple® products
- Spin cap offers optimum and precise control
- Industrial-strength heat treated bits in a compact case with a stay-shut latch
- Powerful magnets inside barrel to better retain bits, as well as pick up and hold fasteners
- Reversible barrel has standard and extended reach ends



32717

Cat. No.	Phillips Bits	Slotted Bits	Square Bits	Hex Bits	TORX® Bits	Other Bits	Shank Length	Handle Color	Overall Length
32717	#000, #00, #0, #1, #2	1 mm, 1.5 mm, 2 mm, 2.5 mm, 3 mm, 3.5 mm	#1, #2	0.9 mm, 1.3 mm, 1.5 mm, Tamperproof: 2 mm, 2.5 mm, 3 mm, 3.5 mm	T3, T4, Tamperproof: T5, T6, T7, T8, T9, T10, T15	Triangle: #2, #3; Pentalope: P2, P5; Tri-Wing®: Y000, Y0, Y1; Stand Off; Spanner: #4, #6	Standard: 2" (5.1 cm); Extended: 4" (10.2 cm)	Yellow/Black	6.35" (16.1 cm)

*Apple® is registered trademarks of Apple Inc; TORX® is a registered trademark of Acument Intellectual Properties, LLC; Tri-Wing® is a registered trademark of Phillips Screw Company

14-in-1 Precision Screwdriver/ Nut Driver

- Precision screwdriver and integrated nut drivers include 14 of the most common sizes in one tool
- Spin cap offers optimum and precise control
- Cushion-Grip handle for maximum comfort
- Industrial-strength heat treated bits
- Sizes are etched into integrated barrels and bits
- Interchangeable steel shaft for fast, easy bit changes



32314

Cat. No.	Nut Driver Sizes	Phillips Bits	Slotted Bits	TORX® Bits	Shank Length	Handle Color	Overall Length
32314	9/64", 5/32", 3/16", 7/32", 1/4", 5/16"	#00, #0	3/32" (0.2 cm), 1/8" (0.3 cm)	Tamperproof TT7, TT8, TT10, TT15	3.1" (7.9 cm)	Black/Yellow	7" (17.8 cm)

TORX® is a registered trademark of Acument Intellectual Properties, LLC.



IMPACT SOCKETS

2-in-1 Impact Socket Sets, 5-Piece

- Each Imperial and Metric set features 8 different sizes in 4 easy-to-carry sockets
- Consist of the most commonly used impact socket sizes in electrical and construction work
- Single-ended impact sockets with hands free adjustment between sizes
- Deep socket with 1/2" drive works great for hardware installation and removal
- Engineered for use with impact drivers
- Includes 1/4" hex by 1/2" hex square adapter
- Case for storage
- Replacement sockets available (sold separately)



66050E
METRIC

Cat. No.	Socket Sizes	Points	Includes
66040	7/8" x 11/16", 3/4" x 9/16" 5/8" x 7/16" and 1/2" x 3/8"	12	1/4" Hex by 1/2" Hex Square Adapter Case for Storage
66050E	32 x 27 mm, 30 x 22 mm, 24 x 19 mm, and 17 x 13 mm		
Replacement Sockets and Adapter			
66041	Adapter	—	
66011	1/2" x 3/8"	12	
66012	5/8" x 7/16"		
66001	3/4" x 9/16"		
66014	7/8" x 11/16"		
66051E	17 x 13 mm		
66052E	24 x 19 mm		
66053E	30 x 22 mm		
66054E	32 x 27 mm		



66040
Imperial

3-in-1 Slotted Impact Socket

- Impact socket features an alignment slot to tighten and loosen most hot-line clamps
- Patent pending design
- Cross hole design to prevent unintentional separation of adapter and socket

Cat. No.	Socket Size	Points
66031	3/4" x 9/16"	12



66031



LINEMAN'S RATCHETING WRENCHES & HAMMER

Lineman's Ratcheting Wrenches

- Great for utility work, and work on most common utility pole hardware, as lag bolts, "C" clamps and suspension bolts
- Bolt-through design allows bolts to pass through the socket (Cat. Nos. KT151T, K152T)
- Fully integrated handle for durability and non-slip grip for comfort
- Tether hole to keep it connected when working at height (Cat. Nos. K151T, K152T)
- Smaller gear teeth for optimal use (shorter throws) in tighter spaces (Cat. No. KT155HD)
- Bright yellow socket for easy visibility



Cat. No.	Description	Size	Points	Overall Length
KT151T	4-in-1 Lineman's Ratcheting Wrench	3/4", 13/16", 1" and 1-1/8"	8	13" (33 cm)
KT152T	4-in-1 Lineman's Slim Ratcheting Wrench	3/4", 13/16", 1" and 1-1/8"	8	13.25" (33.7 cm)
KT155HD	6-in-1 Lineman's Ratcheting Wrench, Heavy-Duty	3/4", 13/16", 1", 1-1/8" Square; 9/16" and 3/4" Hex	8	12" (30.5 cm)
KT155T	6-in-1 Lineman's Ratcheting Wrench	3/4", 13/16", 1", 1-1/8" Square; 9/16" and 3/4" Hex	8	9.375" (23.8 cm)

Lineman's Claw Milled Hammer

- Large head for driving in staples and lag bolts
- Milled face aids in driving staples into utility poles
- Claw end for removing nails, molding, and ground wire
- Lanyard hole for tethering
- Fiberglass handle with textured grip to prevent slippage

Cat. No.	Head Weight	Overall Length
832-26	26 oz (737 g)	5.4' (13.7 cm)



FISH TAPES

Multi-grip handle gives you a firm, steady grip as you pull tape from the case

Slip-resistant housing geometry improves winding power and reduces binding

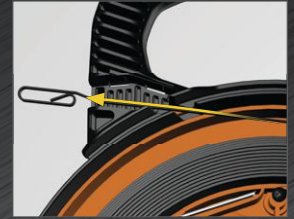
Polypropylene case and handle offer impact resistance



Laser etched markings in 1' (0.3 m) increments allow you to more accurately measure the depth of conduit runs and determine the amount of tape left to pay out

Designed to decrease payout effort by optimizing the tape payout angle

Unique, low friction case reduces binding



Available in steel, fiberglass, and stainless steel with a wide variety of tips

Wide Steel Fish Tape, 25'

- Durable, high carbon 1/4" wide spring steel fish tapes are firm yet flexible
- New protective coating reduces non-contact moisture and humidity but keeps the steel dry to touch
- Laser etched markings in 1' (0.3 m) descending increments allow you to more accurately measure the length of conduit runs and determine the amount of tape left to pay out
- Slim-profile plastic tip navigates easily and reduces catching
- Optimized design of the tape housing decreases payout effort; case and handle offer the maximum impact resistance
- U.S. Patents: 8164025; 8168921; 8212178; 9895773; 10099316

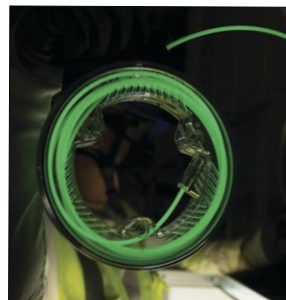
Cat. No.	Description	Tape Size	Diameter
56335	Wide Steel Fish Tape, 1/4" x 25'	25' x 0.25" x 0.03" (7.6 m x 0.6 cm x 0.8 mm)	7" (17.8 cm)



56335

Glow Fish Tape, 20'

- Unique glow-in-the-dark fiberglass tape and nylon tip
- Fully removable from case for more versatile application such as pass-through wire feeding; alignment mark on case makes for easy re-installation into housing
- Anchoring end utilizes stainless steel connector that is compatible with Klein Fish Rod attachments (see Cat. No. 56511)
- Narrow, eyelet tip for easy feeding through crowded spaces
- Patent pending



Cat. No.	Description	Tape Size	Diameter
50550	20' Glow Fish Tape	20' x 0.153" (6.1 m x 3.9 mm)	7" (17.8 cm)



50550



CROSS-LINE & BUBBLE LASER LEVELS

Self-leveling, easy-to-read
Horizontal & Vertical
laser lines

Projects horizontal and vertical lines independently or together for various alignments

Integrated magnetic 360° mounting bracket with 1/4" and 5/8" tripod mounting threads

Plumb spot lasers to pinpoint floor and overhead locations



Self-Leveling Green Cross-Line Laser Level with Red Plumb Spot

- High-performance laser leveling and alignment tool for professionals that provides a reliable self-leveling pendulum
- Green horizontal and vertical laser lines and red plumb spot lasers that project horizontal and vertical lines independently or together to address various alignment tasks
- Integrated magnetic 360° mounting bracket with 1/4" and 5/8" tripod mounting threads
- Low battery indicator and easily accessible battery compartment
- Water and dust resistant (IP54)
- Hard plastic carrying case included



93LCLG



Cat. No.	Laser Color	Accuracy	Overall Length	Overall Height	Overall Width
93LCLG	Cross-Line: Green Plumb: Red	±3/32" per 33' (±2 mm per 10 m) Vertical and Horizontal Beams, ±1/8" per 33' (±3 mm per 10 m) Plum Spot	5.3" (13.5 cm)	5.0" (12.7 cm)	2.6" (6.4 cm)

Laser Line Bubble Level

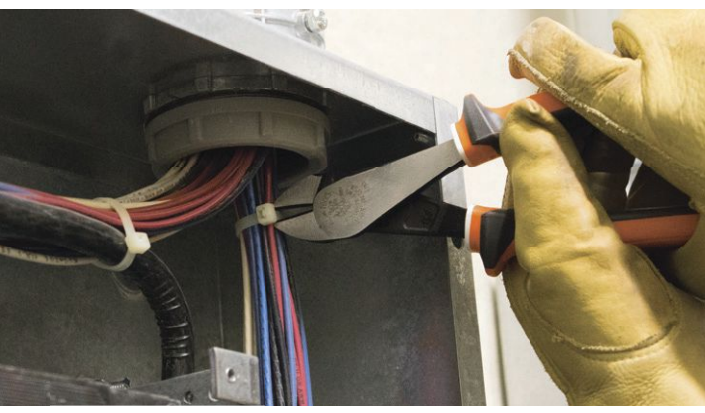
- Projects a horizontal laser line and spot parallel to the base of the level up to 75' (22.9 m) and has three easy-to-read bubble vials - horizontal and cross vials at 0° level, and vertical vial at 90°
- Strong rare earth magnetic base attaches to ferromagnetic surfaces
- Large top-view vial windows for improved visibility
- High-visibility orange cast aluminum body is easy to see on conduit and at jobsites
- V-groove fits contour of pipe and conduit
- Removable leveling stand has thumb screws for manual leveling on uneven surfaces



LBL100

Cat. No.	Accuracy	Overall Length	Overall Height	Overall Width
LBL100	Vials: 0.043"; Spot: +/-0.02" (+/-0.5 mm) at 39.4" (1 m) from Level	7.3" (18.5 cm)	1.84" (4.7 cm)	0.85" (2.2 cm)





JOBSITE

Our insulated tools combine excellent functionality and reduction of risk of injury where a tool might make contact with an energized source with voltage up to 1000 volt.

Klein's Personal Protective Equipment and Safety products help guard against a variety of occupational hazards.

- 1000V Insulated Tools
- Safety Helmets/Hard Hats
- Eyewear
- Work Wear
- Weather Protection
- Respiration
- Gloves
- Illumination/Flashlights
- Jobsite Accessories
- Tool Storage



1000 V INSULATED TOOLS



Electrician's Insulated Tools (EINS)

Provides a multi-color, sleeker design than the Classic Lineman's insulated tools. EINS tools have passed VDE third party testing certification to the IEC 60900 standard.

Durable, molded insulation provides protection against electric shock

Thick, exceptionally tough, high-dielectric coating is bonded to the tool

Flame retardant, impact-resistant, bright orange coating

Insulated Screwdrivers (INS)

Feature insulated, bright orange shaft with Cushion-Grip handles for safety and comfort.



All Klein insulated tools comply with ASTM F-1505 and IEC 60900 standards for insulated tools and are clearly marked with the official international 1000-volt rating symbol.

To conform to these standards, each insulated tool is put through Klein's internal rigorous testing process to ensure the tool can handle any situation in the field. Some of these tests include the dielectric test, a handle pull off test, an impact test and a flammability test, to confirm the durability and reliability of our insulated tools.

Not all tools with plastic coatings or plastic handles provide protection against electrical shock. Only use those tools that are marked with the official international 1000-volt rating symbol, as shown, if there is any chance that the tool will make contact with an energized source.



DIELECTRIC TESTING

10,000 volts are run through the insulation to ensure that there are no leaks



FLAMMABILITY TESTING

⚠ WARNING: Only use tools that are marked with the official international 1000-volt rating symbol shown below, if there is any chance that the tools will make contact with an energized source.



⚠ WARNING: Wear approved eye protection. Always inspect your tools before use. Do not use if orange coating cracks, breaks or becomes damaged. Destroy tool if white layer shows through orange layer.

⚠ WARNING: Do NOT touch uninsulated portion of the tool or any conductive object when either might contact an energized source.

⚠ WARNING: Whenever possible, always de-energize lines and equipment prior to working on or around them. Klein insulated tools are designed only to reduce the chance of injury where the tool may make contact with an energized source.

⚠ WARNING: Because moisture, films, or other surface contaminants are conductive, Klein insulated tools must be kept clean, dry, and free of any surface contaminants.

5-Piece Insulated Tool Kit

- 5-Piece kit includes the must-have insulated tools for any professional tradespersons
- All tools meet or exceed ASTM F1505 and IEC 60900 standards for insulated tools
- Three-part insulation with underlayer on the pliers and wire stripper provides warning sign that insulation may be compromised. VDE Certified



94130

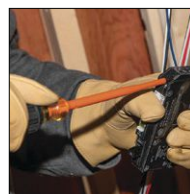
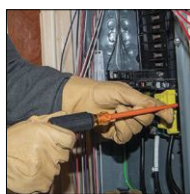
Cat. No.	Description
94130	1000V Insulated Tool Kit, 5-Piece
Includes	
11054EINS	Insulated Wire Stripper/Cutter
200028EINS	8" Insulated Diagonal Cutters
2139NEEINS	9" Insulated Side-Cutters, Slim Handle
6924INS	Slim-Tip Insulated 1/4" Cabinet, Screwdriver, 4" Round Shank
6934INS	Slim-Tip Insulated #2 Phillips Screwdriver, 4" Round Shank

Insulated Slim-Tip Screwdrivers

- Clearly marked with the official 1000-Volt rating symbol
- Slim tip that allows for greater access into tight spaces
- Layer of orange impact and flame-resistant insulation protects from energized sources
- Meets or exceeds ASTM F-1505-16 and IEC 60900:2018 for insulated tools
- Tip-Ident quickly identifies the tip type and orientation
- Made in the USA



Cat. No.	Description	Tip Type	Shank Type	Shank Length	Overall Length	Insulated Slim-Tip Screwdrivers Sets	
						33732INS	33734INS
6916INS	Slim-Tip Insulated Screwdriver, 3/16"	Cabinet	Round	6" (15.2 cm)	10.31" (26.2 cm)		•
6924INS	Slim-Tip Insulated Screwdriver, 1/4"	Cabinet	Round	4" (10.2 cm)	8.31" (21.1 cm)	•	•
6934INS	Slim-Tip Insulated Screwdriver, #2	Phillips	Round	4" (10.2 cm)	8.31" (21.1 cm)	•	•
6946INS	Slim-Tip Insulated Screwdriver, #2	Square	Round	6" (15.2 cm)	10.31" (26.2 cm)		•



SAFETY HELMETS

HAND TOOLS

JOBSITE

ELECTRICAL TESTING & INSTALLATION

CONSTRUCTION & STRUCTURAL TOOLS



SIX-POINT SUSPENSION

for enhanced stability and secure fit

OPEN-FRAME DESIGN

for maximum air circulation

REAR NECK PAD

made of soft material to conform and grip to maintain ratchet location

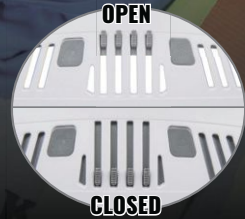
VISOR MOUNTING POINT

UNIVERSAL ACCESSORY SLOTS

PATENT-PENDING ACCESSORY MOUNTS

LARGER VENTS = BETTER VENTILATION

The adjustable vents can be opened or closed for maximum air circulation.



60145



60147



60149

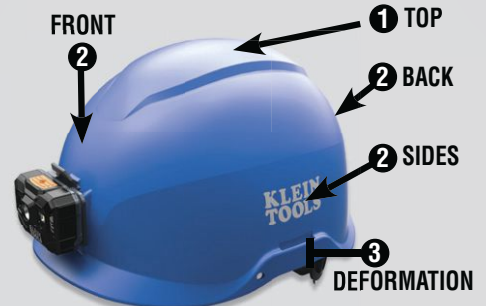
Engineered for optimal safety, comfort and fit. Compact helmet design and unique features allow the user to comfortably work in confined spaces and a variety of demanding environments.

- Patent-pending accessory mounts on front and back ensure Klein Headlamps (not included) attach securely and precisely — no straps or zip ties needed!
- 6-point suspension along with chin strap provides improved stability and secure fit when tilting your head
- Breathable padded sweat-wicking sweatband and comfort top pad are machine washable
- Easy, one-handed adjustment with large knob ratchet mechanism, even with gloves on; soft neck pad pivots to clear bandanna knots and pony tails
- Detachable 4-point padded chin strap for comfortable secure fit
- Fits hat sizes 6.5 to 8
- Shell: PC/ABS; Suspension: PC/ABS and HDPE



SAFETY HELMETS			
Cat. No.	Description	Venting	Shell Color
60145	Safety Helmet, Non-Vented- Class E	—	White
60147	Safety Helmet, Non-Vented-Class E	—	Blue
60149	Safety Helmet, Vented-Class C	Adjustable Vents	White

PROTECTION FROM IMPACT, PENETRATION, AND LATERAL DEFORMATION



(Shown: Cat. No. 60148: TYPE I, CLASS E)

Klein Safety Helmets are tested to the latest standards

TYPE I, CLASS E
ELECTRICAL PROTECTION UP TO 20KV

TYPE I, CLASS C
ADJUSTABLE SIDE VENTS
HELP MANAGE AIR CIRCULATION

- ANSI/ISEA Z89.1-2014 CSA Z94.1-15
- EN12492:2012*: 4.2.1.2, 4.2.1.3, 4.2.1.4, 4.2.2, 4.2.3, 4.2.4
- EN397:2012+A1:2012: 5.2.1, 5.2.4, 5.2.5

*This helmet provides LIMITED protection from small objects striking the top, front, back, left and right sides of the helmet. This is NOT an ANSI/CSA Type II helmet.



BUILDING ON A TRADITION OF SAFETY, COMFORT & FIT



SAFETY HELMETS WITH RECHARGEABLE HEADLAMP

Cat. No.	Description	Venting	Shell Color	Lumens
60146	Safety Helmet, Non-Vented-Class E, with Rechargeable Headlamp (#56062)	—	White	Boost: 300 High: 215 Low: 100
60148	Safety Helmet, Non-Vented-Class E, with Rechargeable Headlamp (#56062)	—	Blue	Boost: 300 High: 215 Low: 100
60150	Safety Helmet, Vented-Class C, with Rechargeable Headlamp (#56062)	Adjustable Vents	White	Boost: 300 High: 215 Low: 100



Safety Helmet Visors

Designed with lightweight materials and vents for adequate ventilation offer long term comfort, specifically to fit Klein Tools Safety Helmets only (Cat. Nos. 60145, 60146, 60147, 60148, 60149, 60150).

- Superior Impact Protection: Tested to the latest ANSI Z87.1+ (2020), CSA Z94.3-20 and MIL-PRF-32432A (Class 1-ballistics fragmentation) standards (See instructions for details)
- High Quality Visor: Optical Class-1
- Anti-fog
- Scratch Resistant
- UV Protection: effectively blocks 99.9% harmful UV-A, UV-B, and UV-C rays
- Locks in up and down position to maintain desired position when moving head



VISORCLR



VISORGRAY

VISORS FOR SAFETY HELMETS

Cat. No.	Description	Window Dimensions	Lens Color	Material
VISORCLR	Safety Helmet Visor, Clear	7" (17.8 cm) x 4" (10.1 cm)	Clear	Polycarbonate
VISORGRAY	Safety Helmet Visor, Gray Tinted	7" (17.8 cm) x 4" (10.1 cm)	Gray Tint	Polycarbonate

Safety Helmet Accessories

For exclusive use with Klein Tools' Safety Helmets (Cat. Nos. 60145, 60146, 60147, 60148, 60149, and 60150)

- Chin Strap (Cat. No. CLMBRSTRP) helps keep safety helmets in place during high winds, at height, or in confined work positions with multi-point attachments; detachable and replaceable
- 6-point suspension (Cat. No. CLMBRSPN) features flexible open frame design and ratchet-knob adjustment for a secure fit
- Replaceable Sweatband and Top Pad are machine washable

REPLACEABLE ACCESSORIES

Cat. No.	Description	Special Features
CLMBRSPN	Safety Helmet Suspension	6-Point Attachment, Ratchet Adjustment
CLMBRSTRP	Safety Helmet Chin Strap	Detachable and Adjustable
KHHTOPPAD	Top Comfort Pad	Sold as 3-Pack
KHHSWTBND	Suspension Sweatband	Sold as 3-Pack

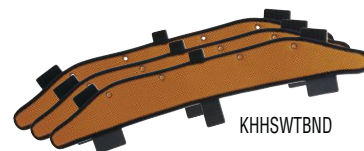


CLMBRSPN*

*Shown with top pad and sweatband, all sold separately.



CLMBRSTRP



KHHSWTBND



KHHTOPPAD



HARD HATS

Klein Tools Hard Hats are designed and engineered for optimal safety, comfort and fit. Unique features allow the user to comfortably work in a wide variety of applications and demanding environments. Patent-pending accessory mounts on front and back ensure optional Klein Headlamps attach securely – no straps needed!

- Breathable, padded sweat-wicking sweatband and top pad improve comfort and are machine washable
- Unique suspension system features a flexible open frame design to provide optimal fit and improved air circulation
- Easy, one-handed adjustment with large knob ratchet mechanism, even with gloves on, and soft neck pad pivots to clear bandanna knots and pony tails
- Reverse donning: suspension can be switched to wear hard hat backwards
- Sweatband, Top Pad, Chin Strap and Suspension System also sold separately
- All hard hats made of durable PC/ABS

LONG TERM COMFORT AND OPTIMAL FIT

Flexible, Open-Frame Design
allows suspension to conform to user's head, provides optimal fit, and improved ventilation.

Rear Neck Pad
Soft, non-slip rear pad provides excellent cushion and grip.

Replaceable, Sweatband
Front and side coverage; sweat-wicking and breathable padding; machine washable. (Replacement part # KHHSWTBND)

Chin Strap Attachment Points
Chin Strap is sold separately. (#KHHSTRP)

Multi-Point Adjustment
allows user to choose the best position for enhanced fit and comfort.



NON-VENTED CLASS E



REVERSE DONNING

Suspension can be easily adjusted to wear hard hat frontwards or backwards. Available on both vented and non-vented hard hats.

VENTED CLASS C



Hard Hats

HARD HATS				
Cat. No.	Description	Hat Style	Venting	Shell Color
60100	Hard Hat, Non-Vented, Cap Style	Cap	No	White
60105	Hard Hat, Vented, Cap Style	Cap	Yes	White
60248	Hard Hat, Non-Vented, Cap Style	Cap	No	Blue
60249	Hard Hat, Non-Vented, Full Brim	Full Brim	No	Blue
60262	Hard Hat, Vented, Full Brim	Full Brim	Yes	Yellow
60400	Hard Hat, Non-Vented, Full Brim Style	Full Brim	No	White
60401	Hard Hat, Vented, Full Brim Style	Full Brim	Yes	White

Hard Hats with Headlamps

HARD HATS WITH HEADLAMPS						
Cat. No.	Description	Hat Style	Venting	Shell Color	Lumens	Batteries
60107	Hard Hat, Non-Vented, Cap Style with Alkaline Headlamp	Cap	No	White	High: 150 Low: 50	3 x AAA
60107RL	Hard Hat, Non-Vented, Cap Style with Rechargeable Headlamp	Cap	No		Boost: 300 High: 215 Low: 100	Lithium-Ion
60113RL	Hard Hat, Vented, Cap Style with Rechargeable Headlamp	Cap	Yes		Boost: 300 High: 215 Low: 100	Lithium-Ion
60406RL	Hard Hat, Non-Vented, Full Brim with Rechargeable Headlamp	Full Brim	No		Boost: 300 High: 215 Low: 100	Lithium-Ion
60407	Hard Hat, Vented, Full Brim with Alkaline Headlamp	Full Brim	Yes		High: 150 Low: 50	3 x AAA
60407RL	Hard Hat, Vented, Full Brim with Rechargeable Headlamp	Full Brim	Yes		Boost: 300 High: 215 Low: 100	Lithium-Ion

PROTECTION FROM IMPACT, PENETRATION, AND LATERAL DEFORMATION



(Shown: Cat. No. 60248: TYPE I, CLASS E)

Klein Hard Hats are tested to the latest standards

TYPE I, CLASS E ELECTRICAL PROTECTION UP TO 20KV
TYPE I, CLASS C ADJUSTABLE SIDE VENTS HELP MANAGE AIR CIRCULATION

- 1 ANSI/ISEA Z89.1-2014 CSA Z94.1-15
- 2 EN12492:2012: 4.2.1.2, 4.2.1.3, 4.2.1.4
- 3 EN397:2012+A1:2012: 5.2.4

*This hard hat provides LIMITED protection from small objects striking the top, front, back, left and right sides of the hard hat. This is NOT an ANSI/CSA Type II hard hat.

Hard Hat Accessories

These accessories are designed specifically for use with Klein Tools Hard Hats.



HARD HAT ACCESSORIES			
Cat. No.	Description	Type	Special Features
KHHSPPN	Klein Tools Hard Hat Replacement Suspension	Suspension	Open Frame Allows Maximum Ventilation
KHHSTRP	Klein Tools Hard Hat Chin Strap	Chin Strap	Adjustable, Detachable and Replaceable
KHHSWTBND	Klein Tools Hard Hat Replacement Sweatband	Sweatband	Padded, Sweat Wicking, and Odor Resistant 3-pack
KHHTOPPAD	Klein Tools Hard Hat Replacement Top Pad	Hard Hat Top Pad	Padded, Sweat Wicking, and Odor Resistant 3-pack



PERSONAL PROTECTION & SAFETY EQUIPMENT



Safety Glasses

High-Quality protective eyewear that feature an anti-fog coating that won't wear off. Scratch resistant lenses with UV protection block 99.9% of harmful UV rays.

- Superior impact protection: impact tested to the latest ANSI Z87.1+, CSA Z94.3 and MIL-PRF-32432A Clause 3.8.4.1 (Class 1-ballistics fragmentation) standards
- UV Protection: Tested to ANSI Z87.1 U6 standard, which effectively blocks 99.9% harmful UV rays
- Non-slip fit; rubber nose piece and temple tips for secure fit and grip
- True Color Recognition
- Optional Breakaway Lanyard (Cat. No. 60177) and Hard Case (Cat. No. 60176) both sold separately



MIL-PRF
Clause 3.8.4.1
Class 1

CSA
Z94.3

ANSI
Z87.1+



Cat. No.	Description	Frame Design	Lens Color
60159	Standard Safety Glasses, Clear Lens	Semi-Frame	Clear
60160	Standard Safety Glasses, Gray Lens		Gray
60161	Professional Safety Glasses, Clear Lens		Clear
60162	Professional Safety Glasses, Gray Lens	Full Frame	Gray
60163	Professional Safety Glasses, Full Frame, Clear Lens		Clear
60164	Professional Safety Glasses, Full Frame, Gray Lens	Semi-Frame	Gray
60171	Standard Safety Glasses, Clear Lens, 2-Pack		Clear
60172	PRO Safety Glasses-Wide, Clear Lens, 2-Pack		Clear
60173	PRO Safety Glasses-Semi-Frame, Combo Pack		Clear / Gray
60174	Standard Safety Glasses-Semi Frame, Combo Pack	Clear / Gray	Clear / Gray

High-Visibility Safety Vest

- Meets ANSI/ISEA 107-2015, Type R, Class 2 requirements
- Zipper closure in front for secure fit and breathable mesh fabric on back
- 2" retro-reflective stripes enhance visibility
- 2 large interior pockets, four exterior pockets with hook and loop closure, and exterior tab to attach radio clip or other items



60269

Cat. No.	Chest Size	Color	Number of Pockets
60269	Medium/Large: 38" to 44" (96.5 to 111.8 cm)	High-Visibility Yellow	8
60268	Extra-Large: 44" to 50" (111.8 to 127 cm)		

Neck and Face Warming Bands

- Double-layered face protection and warmth in cold weather conditions
- Cat. No. 60455 has full layer of fleece on the inside and a layer of anti-odor treatment fabric on the outside
- Cat. No. 60466 has two layers of anti-odor treatment fabric on the top and warm single layer of fleece on the bottom
- Secure fit and won't unravel with sewn ends
- One size fits most
- Machine washable



Cat. No.	Description	Color	Material	Overall Length
60455	Neck and Face Warming Band	Black	Exterior: 92% Polyester, 8% Spandex; Interior: 90% Polyester, 10% Spandex	20" (50.8 cm)
60466	Neck and Face Warming Half-Band		Top Portion: 92% Polyester, 8% Spandex; Bottom Portion: 90% Polyester, 10% Spandex	12" (30.5 cm)

Neck and Face Cooling Bands

- Klein Tools' Neck and Face Cooling Band can be worn wet or dry
- Secure fit and won't unravel with sewn elastic ends
- Cooling is immediate after getting wet and will last for hours
- Wear under a hard hat or alone
- Anti-odor treatment for long lasting freshness
- One Size Fits Most
- Machine washable



Cat. No.	Description	Color	Material	Overall Length
60439	Neck and Face Cooling Band	Blue	92% Polyester, 8% Spandex	20" (50.8 cm)
60465		High-Visibility Yellow		

Cooling Towel

- Klein Cooling Towels help you cool down during and after hard work or strenuous activities
- Retains moisture and stays cooler than ambient air for hours
- Multi-use towel; reactivate several times
- Comes in resealable bag with carabiner
- Machine or hand wash with mild detergent; air dry only



60230

Cat. No.	Description	Color	Soaking Time	Material	Overall Length
60230	Cooling PVA Towel, 2-Pack	Blue	Under One Minute	PVA Material	29.5" (74.9 cm)

P100 Half Mask Respirators

Light and ultra-compact respirators efficiently and effectively provide the wearer with P100 particulate protection without compromising comfort and wearability. P100 Filters are replaceable.

- Approved to NIOSH Standard (TC-84A-6949)
- Non-metal, latex and silicone-free lightweight TPE face piece
- Compatible with other PPE safety products including visors and welding helmets
- Ergonomic design provides maximum visibility to wearers
- HEPA filters-high efficiency particulate air filters offer hydro-phobic (water repellent) material and offer users the maximum particulate protection, greater than 99.97%
- Low profile filters provide unobstructed field of vision, and are replaceable (Cat. No. 60245)



Cat. No.	Description	Standards	Replaceable/Reusable	Material	Size
60244	P100 Half-Mask Respirator, Medium-Large	NIOSH (TC-84A-6949)	Reusable	TPE (Thermo Plastic Elastomer)	Medium/Large
60246	P100 Half-Mask Respirator, Small-Medium	NIOSH (TC-84A-6949)	Reusable	TPE (Thermo Plastic Elastomer)	Small/Medium
Replacement					
60245	P100 Half-Mask Respirator Replacement Filter	NIOSH (TC-84A-6949)	Replaceable		

⚠ The P100 filter is part of the approved assembly and only when the above items are used together is the device approved for occupational applications. NOT FOR USE in atmospheres immediately dangerous to life or health.

Reusable Face Mask With Replaceable Filters

Basic protection against non-harmful common airborne irritants

- Washable masks provide protection against non-toxic dust, pollen, mold, dander, and common airborne irritants
- Adjustable neck and head straps for optimal fit
- Breathing vents and nose clip help prevent glasses from fogging
- Replaceable Filters (60443) also sold separately
- Mask includes one filter and storage bag



Cat. No.	Description	Color
60442	Reusable Face Mask	Black
60443	Replacement Filters for Reusable Face Mask (3-pk)	Black

⚠ NOT NIOSH approved. To ensure safe operations read and follow instructions.

Lightweight Gel Knee Pads

- Lightweight knee pads have slip resistant rubber caps to grip kneeling surface for enhanced stability and balance
- Designed to disperse pressure and reduce fatigue while providing lightweight comfort and protection
- Cinch-tight straps provide comfortable, snug fit
- Knee pads are sold in pairs

Cat. No.	Description	Material	Closure Type	Overall Length	Overall Height	Overall Width
60184	Lightweight Gel Knee Pads	TPE 40%, Neoprene 20%, EVA Foam 20%, Polyester 15%, Nylon 5%	Clip	6" (15.2 cm)	12" (30.5 cm)	6" (15.2 cm)



WORK GLOVES



Touch-Screen Work Gloves with Cut-Level Resistance

- Touchscreen-capable fingertips keep you connected on the jobsite
- Nitrile dip technology for superior grip
- Seamless knit cuff for comfortable fit
- Machine washable



Cat. No.	Cut-Level	Standard	Color	Size	Package Quantity
60185	2	ANSI A2 Cut Resistance; EN 388: 2015 4342 B	Gray Knit, Black Coating	Large (9)	2-Pair
60197				Extra-Large (10)	
60186	4	ANSI/ISEA 105-2016 Cut Level A4; EN 388: 2015 4442 D	High-Visibility Yellow Knit, Black Coating	Large (9)	2-Pair
60198				Extra-Large (10)	

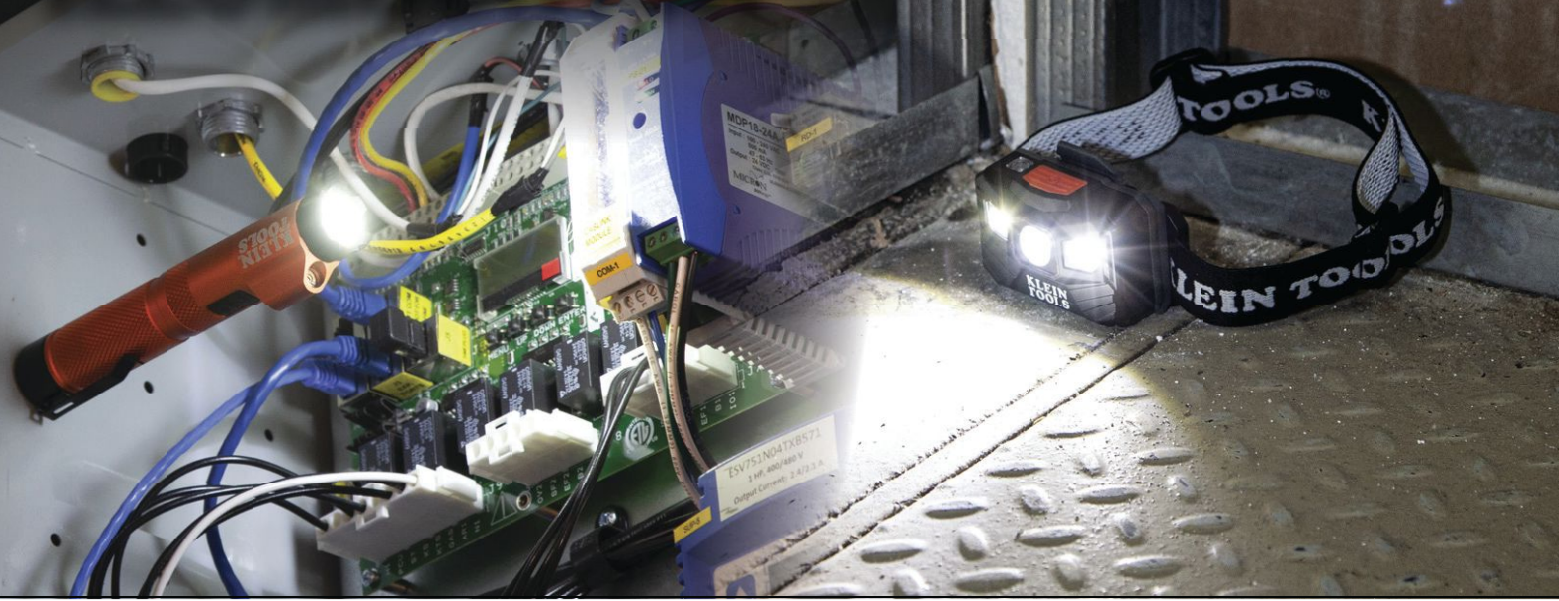
Leather Work Gloves

- Genuine professional-grade goatskin leather
- Knuckle and finger protection with PVC guards
- Mesh back for breathability and ergonomic shape for dexterity
- EVA foam padding on palms for extra comfort
- Hook and loop closure on cuff strap provides snug fit



Cat. No.	Color	Size	Package Quantity
60188	Natural Tan/Black	Large	Pair
60189		Extra-Large	

ILLUMINATION



Rechargeable Focus Flashlight with Laser

- The rechargeable focus flashlight with class IIIa red laser pinpoints out-of-reach objects
- LED light's twist focus bezel concentrates the light beam where it's needed
- Strong magnetic end cap for hands-free use
- Rated a durable 10' (3 m) drop test, IP54 water and dust resistant
- Battery gauge notifies when the battery is low; rechargeable via micro-USB cable (included)
- Removable pocket clip with an integrated lanyard hole
- When light is on for 5 seconds, the next click is off



56040

Cat. No.	Description	Lumens	Battery Life	Batteries	Drop Protection
56040	Rechargeable Focus Flashlight with Laser	High: 350 Low: 125	6 hrs 12 hrs	Lithium-Ion	10' (3.04 m)

Rechargeable 400 Lumen Headlamp with Fabric Strap

- Rechargeable 400 lumen LED Headlamp has 3 bright lighting modes and up to 22 hours of runtime
- Headlamp automatically turns off after 3 minutes in bright light via auto-sensing technology, extending battery life
- Battery gauge indicates level of battery life with colored LED lights
- Smartly designed headlamp bracket also attaches directly to Klein® Hard Hats equipped with bracket system
- Slim profile with pivoting mount to allow up to a 64° lighting angle
- Adjustable fabric strap with woven silicone grip
- Durable headlamp: drop-test rating of 6' (1.8 m), dust and water resistant



56048

Cat. No.	Description	Lumens	Battery Life	Batteries	Drop Protection
56048	Rechargeable Headlamp with Strap, 400 Lumen All-Day Runtime, Auto-Off	Boost: 400 High: 200 Low: 100	4 hrs 12 hrs 22 hrs	Lithium-Ion	6' (1.8 m)





Rechargeable Light Array Headlamp with Fabric Strap

- Rechargeable headlamp with a rectangular light array offers more usable light field
- Adjustable fabric strap with silicone grip comes equipped with a convenient marker and carpenter's pencil holder
- Mounts magnetically with a strong backside magnet for use as a work light
- Smartly designed headlamp bracket also attaches directly to Klein® Hard Hats equipped with bracket system
- Battery gauge indicates level of battery life with colored LED lights
- Durable headlamp: drop-test rating of 6' (1.8 m), dust and water resistant



56049



Cat. No.	Description	Lumens	Battery Life	Batteries	Drop Protection
56049	Rechargeable Light Array Headlamp w/ Strap, 260 Lumen, All-Day Runtime	High: 260 Low: 125	9 hrs 14 hrs	Lithium-Ion	6' (1.8 m)

Rechargeable 400 Lumen Headlamp with Silicone Strap

- Rechargeable 400 lumen LED Headlamp has 3 bright lighting modes and long, all-day battery life
- Headlamp automatically turns off after 3 minutes in bright light via auto-sensing technology, extending battery life (feature can be disabled)
- Battery gauge indicates level of battery life with colored LED lights
- Wear with the adjustable silicone strap or the smartly designed bracket that attaches directly to Klein® Hard Hats (those equipped with bracket system)
- Slim profile with pivoting mount to allow up to a 64° lighting angle
- Durable headlamp: drop-test rating of 6' (1.8 m), dust and water resistant



56064

Cat. No.	Description	Lumens	Battery Life	Batteries	Drop Protection
56064	Rechargeable Headlamp w/ Silicone Strap, 400 L All-Day Runtime, Auto-Off	Boost: 400 High: 200 Low: 100	4 hrs 12 hrs 22 hrs	Lithium-Ion	6' (1.8 m)



Rechargeable Headlamp and Worklight

- Rechargeable headlamp attaches directly to Klein® Hard Hats (equipped with bracket system)
- Mount headlamp magnetically with a strong backside magnet for use as a work light
- Battery gauge indicates level of battery life with colored LED lights
- Slimmer profile light with pivoting mount allows up to a 64° lighting angle
- Durable headlamp: drop-test rating of 6' (1.8 m), dust and water resistant



Cat. No.	Description	Lumens	Battery Life	Batteries	Drop Protection
56062	Rechargeable Headlamp and Worklight, 300 Lumens All-Day Runtime	Boost: 300 High: 215 Low: 100	4 hrs 9 hrs 14 hrs	Lithium-Ion	6' (1.8 m)

Headlamp Bracket with Fabric Strap

- Smartly designed bracket attaches directly to Klein® headlamps equipped with mounting bracket
- Comfort fabric strap contains just enough silicone grip to fit comfortably on your head and stays securely on a hardhat or cap
- Strap length easily adjusts
- Comes equipped with a convenient marker and carpenter pencil holder



Cat. No.	Description	Overall Length	Material
56060	Headlamp Bracket with Fabric Strap	24" (61 cm)	ABS/PC, Silicone Weave in Nylon Elastic Fabric

Tradesman Tumbler

- Keeps liquid cold up to 12 hours and hot up to 4 hours
- Designed with double wall vacuum insulated stainless steel
- Rugged, textured silicon outer sleeve for slip-resistance
- Unique threaded lid design allows easy twisting with gloves on or off
- Flip-top lid locks to form a spill-resistant seal
- Removable rare earth magnetic lanyard secures tumbler to metal objects
- Made from stainless steel and other BPA-free food grade materials



Cat. No.	Description	Color	Size
55580	Tradesman Tumbler	Black/Orange	20 oz (0.59 L)



JOBSITE ACCESSORIES



Bluetooth® Speaker with Magnetic Strap

- Rechargeable Wireless Speaker offers crisp, clean sound and multiple mounting options
- Connects wirelessly up to 32' (10 m) or via a wired auxiliary input (aux cable included)
- Hang by the integrated hang hole or secure the mounting strap around conduit, handles or bags
- Mounts with a powerful magnet embedded in the strap
- Able to answer calls hands-free with the built-in speakerphone
- 10 hours of use from a rechargeable battery; energy saving powers off after 10 minutes of inactivity
- LED light indicates connectivity and battery level
- Rugged speaker rated IP54 dust- and water-resistant and 10' (3 m) drop test
- Includes 1/8" (0.4 cm) stereo auxiliary cable and USB-C to Standard USB charging cable



Cat. No.	Description	Overall Length	Overall Height	Overall Width
AEPJS2	Bluetooth® Speaker with Magnetic Strap	4.1" (10.4 cm)	4.2" (10.7 cm)	1.6" (4.0 cm)

*The Bluetooth® word mark and logos are registered trademarks owned by Bluetooth SIG, Inc. and any use of such marks by Klein Tools, Inc. is under license.

Rechargeable Personal Jobsite Fan

- Personal fan has multiple mounting options perfect for the job site
- Arm base rotates and cage spins 360° to aim airflow in any direction
- Two powerful magnets and a hang hole are incorporated into the base for mounting
- Base forms a strong clamp for attaching to studs or conduit
- Features two long-lasting fan modes: Low for 9 hours; High for 5 hours



Cat. No.	Description	Mounting Type	Color	Overall Length	Overall Height	Overall Width	Battery Life
PJSFM1	Rechargeable Personal Jobsite Fan	Magnets, Clamp, Hang Hole, Sit on Base	Orange, Dark Gray	9" (22.9 cm)	10.52" (26.7 cm)	4.15" (10.5 cm)	High 5 hrs, Low 9 hrs



MODULAR TOOL POUCH SYSTEM



All pouches include belt clip for secure attachment to Modular Belt. 32° clip design allows pouch to move with you to keep contents upright.

Tradesman Pro™ Modular Tool Pouch System



- Build your own tool belt and storage system
- Quick-release clip design on four styles of pouches allows for easy change from belt to wall rack
- 32° clip design on pouches to keep contents upright when changing from belt to wall rack
- Pouches constructed of 1680d ballistic weave for durability
- Wall Rack securely stores three Modular Tool Pouches, and comes with mounting hardware to secure in garage, shop, or work van
- Tool Belts with thick, rugged belt ends have side handles for ease of lifting, metal connection points to attach suspenders (Cat. No. 50400) for extra support, and loop tape measure holder
- Patent Pending

Modular Pouches

Cat. No.	Description	Number of Pockets	Belt Connection	Material	Belt Width
55912	Piping Tool Pouch with Belt Clip	7	Click Lock™	1680d Ballistic Weave	Up to 2" (5.1 cm)
55913	Parts Pouch with Belt Clip	7			
55914	Trimming Pouch with Belt Clip	8			
55917	Drill Pouch with Belt Clip	4			

Modular Wall Rack

Cat. No.	Description	Material	Length	Height	Belt Width
55921	Wall Rack	Heavy-Duty Anodized Aluminum	24" (61 cm)	1.5" (3.8 cm)	2" (5.1 cm)

Modular Tool Belts

Cat. No.	Description	Material	Waist Size	Overall Width
55918	Tool Belt - M	Ballistic Polyester and Leather	31" to 34" (78.7 to 86.4 cm)	5" (12.7 cm)
55919	Tool Belt - L		35" to 39" (88.9 to 99.1 cm)	
55920	Tool Belt - XL		40" to 44" (101.6 to 111.8 cm)	



55917



55914



55912



55913



55921



55920

⚠ WARNING: This is NOT an occupational protective belt. NOT for fall arrest or back support.

CANVAS BUCKETS



Heavy-Duty Drawstring Close Buckets

- Load rated for 100 lb (45.4 kg) with easy-to-close drawstring tops
- Durable, No. 4 heavy-duty canvas will withstand the toughest job sites
- Double-locking carabiner for securely hoisting the bucket
- Interior D-rings for tether connection
- Reinforced bottom for added durability
- Web handles extend down the side for additional strength

Cat. No.	Overall Height	Load Rating	Diameter	Material	Special Features
5114DSC	17" (43.2 cm)	100 lb (45 kg)	12" (30.5 cm)	No. 4 Canvas	Double-Locking Carabiner, Swivel Snap
5114DSC22	22" (55.9 cm)				



LOAD RATED
100 lbs. (45 kg)



Interior D-rings for tether connection



Drawstring close top allows for easy opening and closing



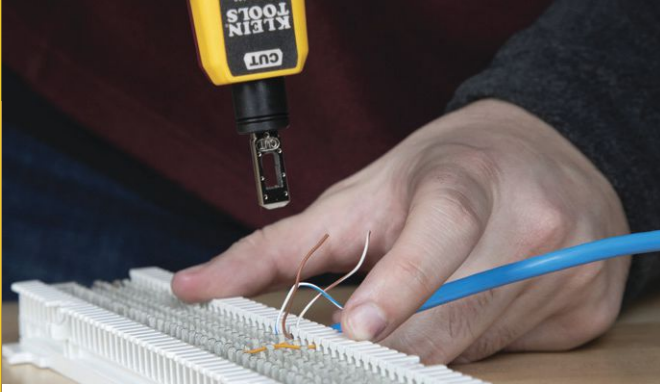
Double-locking carabiner



⚠ WARNINGS:

- Inspect for damage before each use.
- Remove from service if bucket shows signs of wear.
- Never exceed the working load limit.

HAND TOOLS



JOBSITE



ELECTRICAL TESTING & INSTALLATION

CONSTRUCTION & STRUCTURAL TOOLS

ELECTRICAL TESTING & INSTALLATION

Our comprehensive line of verification VDV tools and testers were created for residential or commercial systems.

Crafted for optimum durability, reliability and functionality, our line of test and measurement equipment is engineered with the user in mind.

- Punchdown Tools
- Cable Management
- Cable Testing
- Clamp Meters
- Thermometers
- Electrical Testers
- Specialty Testers

VOICE/ DATA/ VIDEO



Impact Punchdown Tool

- Use to punch data cables into 66/110 panels and blocks
- Terminates and cuts wires in CAT3, CAT5e and CAT6/6A cable in one step
- Traditional punchdown-style form with a cushioned, non-slip handle
- Metal injection molding (MIM) blade for durability (included)
- Provides precise, reliable connections every time
- Spring loaded for fast, low effort seating and terminating
- Bayonet style (twist & lock) socket accepts most manufacturers' blades
- Extended Reach Blade (Cat. No. VDV427-110) for working on active panels with preexisting connections (sold separately)
- Replacement blades available (Cat. No. VDV427-104)



CAT3/CAT5e

CAT6/CAT6A

Cat. No.	Description	Configuration 1 End	Configuration 2 End	Includes
VDV427-300	Impact Punchdown Tool, 66/110 Blade	110 Terminate and Cut	66 Terminate and Cut	Punchdown Tool, Extended Reach Blade, Spudger, Wire Pick
VDV427-104	Dura-Blade™ 66/110 Cut Punchdown Blade			1 Blade
VDV427-110	Extended Reach Blade for Impact Punchdown Tool		—	1 Blade

Loose Cable Stapler and Staples

- Drive insulated staples for Voice/Data/Video, NM (Romex®) nonmetallic sheathed cable with one hand
- Stapler has forward action for stability and single-handed operation
- Works solely with Klein Tools staples (Cat. Nos. 450-001, 450-002, 450-003)
- Adjustable to 1/4", 5/16" and 11/32" staple sizes
- Adjustable channel on mounting face guides and protects cable
- Secured staple push rod stays attached - cannot be lost
- Staples are UL listed and are designed with plastic insulation to protect cable



Cat. No.	Description	Weight	For Use With	
450-100	Loose Cable Stapler	1.7 lb (0.77 kg)	Voice, Data, Video, NM (Romex®) Nonmetallic Sheathed Cable	
Insulated Staples — Sold separately in 300 qty. packs				
Cat. No.	Description	Size (H x W)	Leg Length	For Use With
450-001	Staples, 1/4" x 5/16" Insulated	1/4" x 5/16" (6 x 8 mm)	11/16" (17 mm)	CAT3/5e Data Cable; Speaker Wire
450-002	Staples, 5/16" x 5/16" Insulated	5/16" x 5/16" (8 x 8 mm)		CAT3/5e/6/6A Data Cable; RG59/6/6Q Coaxial Cable
450-003	Staples, 11/32" x 19/32" Insulated	11/32" x 19/32" (9 x 15 mm)	7/8" (22 mm)	CAT3/5e/6/6A Data Cable (x2, x3); RG59/6/6Q Coax Cable (x2); NM (Romex) 14-3, 14-3G, 12-3

*Romex® is a registered trademark of Southwire Company



VOICE/DATA/VIDEO TESTING TOOLS

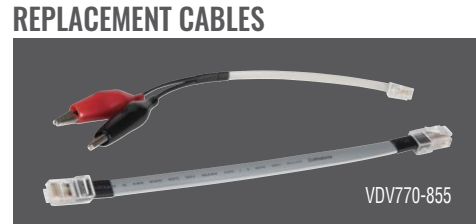
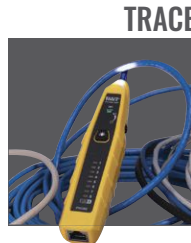
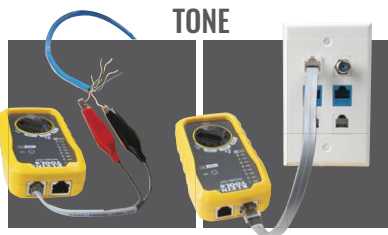


Tone & Probe Test and Trace Kit

- Provides simple toning and tracing of non-energized wire
- Responsive probe with durable, non-metallic, conductive tip
- Alligator clips for unterminated wires
- RJ45 to RJ45 test cable
- Toner and probe together perform pin to pin wire map test
- Work light on probe tip for use in dark spaces



Cat. No.	Description	Includes
VDV500-705	Tone & Probe Test and Trace Kit	RJ45 Cable, RJ12 and Alligator Clip Cable, 4X Batteries
VDV770-855	Replacement Cables for Tone & Probe Test and Trace Kit	Alligator Clips to RJ11 Plug; RJ45 to RJ45



Scout® Pro 3 Tester Kits

Next generation, tester kits feature a larger, backlit display, cable length and now Power over Ethernet (PoE)

- Test voice (RJ11/12), data (RJ45) and video (coax F-connector) cables
- Measure cable length (up to 2,000 feet)
- Backlit LCD screen displays cable length, wiremap, cable ID and test results
- Detect, identify and test Power over Ethernet (PoE)
- Test for Open, Short, Miswire or Split-Pair faults
- Hub Blink mode to identify port location on a hub or a switch
- Includes voltage warning, shield detection, auto power-off and low battery indicator
- Remote options include up to 12 Test + Map™ remotes and up to 18 locator remotes
- All kits include a Self-Storing Test + Map™ Remote
- These models replace the Scout® Pro 2 series of tester kits



HAND TOOLS

JOB SITE

ELECTRICAL TESTING & INSTALLATION

CONSTRUCTION & STRUCTURAL TOOLS



Included	Cat. No.	VDV501-851 Starter Kit	VDV501-852 Locator Remote Kit	VDV501-853 Smart Remote Kit	VDV770-850 Test + Map™ Remote Upgrade Kit	VDV770-851 Test + Map™ Remote Expansion Kit
Scout® Pro 3 Tester		●	●	●	-	-
Self-Storing Remote (#1)		●	●	●	-	-
Test + Map™ Remotes		-	-	#2 - #6	#2 - #6	#7 - #12
RJ45 Locator Remotes		5	18	-	-	-
F-Coax Locator Remotes		5	18	-	-	-
Coax F Adapter (female-to-female)		1	2	7	6	6
Coax Barrel Adapters (male-to-female)		-	-	7	2	-
RJ45 Jumper Cables (6")		-	2	7	7	6
RJ11 Jumper Cables (6")		-	2	2	2	2
RJ12 Jumper Cables (6")		-	2	2	2	2
9V Alkaline Battery		●	●	●	-	-
Carrying Case		-	● VDV770-126	● VDV770-125	● VDV770-125	● VDV770-127



DIGITAL CLAMP METERS



Digital Clamp Meters

New Capabilities offered at the same cost!

- Rugged industrial design –improved durability, look and feel
- Integrated NCV tester on all meters with audible and visual indicators
- Test lead holder on side of clamp for hands-free operation
- True RMS added to CL220
- Improved temperature accuracy on all models
- Upgraded lantern-style test-leads on all models
- Larger jaw opening – now 1.38"
- New magnetic hanger without a strap clips directly to the back of meters (sold separately)



(Shown: Cat. No. CL220)

Test Lead Input Jacks; easy access on front



Cat. No.	Description	Batteries	Jaw Size	Included	Overall Length	Overall Height	Overall Width
CL120	400A AC Clamp Meter	3 x AAA	1.6" (4.1 cm)	Carrying Case, Instructions, Test Leads, and Batteries	8.45" (21.5 cm)	1.5" (3.8 cm)	1.5" (3.8 cm)
CL120KIT	400A AC Clamp Meter, Line Splitter, GFCI Tester			Cat. No. CL120 Digital Clamp Meter with Test Leads and Carrying Case, Cat. No. 69409 Line Splitter 10x, and Cat. No. RT210 GFCI Receptacle Tester, Batteries	3.02" (7.7 cm)	8.7" (22.1 cm)	1.61" (4.1 cm)
CL220	400A AC TRMS Clamp Meter with Temperature			Carrying Case, Instructions, Test Leads, Thermocouple, and Batteries	8.45" (21.5 cm)	1.5" (3.8 cm)	1.5" (3.8 cm)
CL320	HVAC 400A AC TRMS Clamp Meter with Temperature and DC Micro Amp			Carrying Case, Instructions, Test Leads, Thermocouple, and Batteries			
CL390	400A AC/DC TRMS Clamp Meter with Temperature and DC Micro Amp			Carrying Case, Instructions, Test Leads, Thermocouple, and Batteries			





Features	CL390	CL320	CL220	CL120
Drop Protection	6.6 ft. (2 m)	6.6 ft. (2 m)	6.6 ft. (2 m)	6.6 ft. (2 m)
Ingress Protection	-	-	-	-
Safety	CAT III 600V	CAT III 600V	CAT III 600V	CAT III 600V
AC Voltage (Volts)	600V	600V	600V	600V
DC Voltage (Volts)	600V	600V	600V	600V
AC + DC Voltage	-	-	-	-
AC Current (Amps)	400A	400A	400A	400A
DC Current (Amps)	400A	-	-	-
Ohms (Resistance)	40MΩ	40MΩ	20MΩ	20MΩ
AC Millivolts	●	-	●	●
DC Millivolts	●	●	●	●
DC Microamps	●	●	-	-
True RMS	●	●	●	-
Audible Continuity	●	●	●	●
Backlight	Reverse Contrast Display	●	●	●
Temperature	-40° - 1832°F (-40° - 1000°C)	-40° - 1832°F (-40° - 1000°C)	-40° - 1832°F (-40° - 1000°C)	-
Differential Temperature	-	-	-	-
Digital Temperature Calibration	-	-	-	-
Low Impedance	-	-	-	-
Low-Pass Filter	-	-	-	-
Inrush Current	-	-	-	-
Non-Contact Voltage Testing	●	●	●	●
Auto Ranging	●	●	●	●
Range Hold	●	●	●	●
Data Hold	●	●	●	●
Diode Test	●	●	-	-
Capacitance Test	4000 μF	4000 μF	-	-
Frequency / Duty Cycle	10Hz - 60kHz	10Hz - 60kHz	-	-
Max / Min	●	●	MAX only	MAX only
Relative Mode	●	-	-	-
Magnet	Available As Accessory	Available As Accessory	Available As Accessory	Available As Accessory
Worklight	-	-	-	-
Auto-Power Off	●	●	●	●
LCD Display Count	4000	4000	2000	2000



CL120 KIT

Cat. No. CL120 Digital Clamp Meter with Test Leads and Carrying Case, Cat. No. 69409 Line Splitter 10x, and Cat. No. RT210 GFCI Receptacle Tester, Batteries



Cat. No.	Description
CL120KIT	400A AC Clamp Meter, Line Splitter, GFCI Tester

Rare Earth Magnetic Hanger

- Magnetic Hanger allows the user to safely work hands-free
- Constructed with powerful rare earth magnets
- Clips directly onto the back of the meter with no strap
- View measurement readings at eye-level by attaching to ferromagnetic surfaces
- Easy to clip on and off



Cat. No.	Description	Application
69445	Rare Earth Magnetic Hanger, No Strap	Hands Free Measurements with Select Clamps and Multimeters

For Use With
CL220, CL120, CL320, CL390, CL450, CL600, CL700, CL800, CL900, and Select Multimeters

- ⚠ WARNINGS:** To ensure safe operation and service of the tester, follow these instructions. Failure to observe these warnings can result in severe injury or death.
- Before each use, verify meter operation by measuring a known voltage or current.
 - Never use the meter on a circuit with voltages that exceed the category based rating of this meter.
 - Do not use the meter during electrical storms or in wet weather.
 - Do not use the meter or test leads if they appear to be damaged.
 - Ensure meter leads are fully seated, and keep fingers away from the metal probe contacts when making measurements.
 - Do not open the meter to replace batteries while the probes are connected.
 - Never assume neutral or ground wires are de-energized. Neutrals in multi-wire branch circuits may be energized when disconnected and must be retested before handling.
 - Use caution when working with voltages above 60V DC, or 25V AC RMS. Such voltages pose a shock hazard.
 - To avoid false readings that can lead to electrical shock, replace batteries if a low battery indicator appears.
 - Unless measuring voltage or current, shut off and lock out power before measuring resistance or capacitance.
 - Always adhere to local and national safety codes. Use individual protective equipment to prevent shock and arc blast injury where hazardous live conductors are exposed.

ELECTRICAL TEST KITS



CL120VP



MM320KIT



NCVT3PKIT

Electrical Test Kits

Best-Sellers in Convenient Value Kits

Cat. No.	Description	Includes
CL120VP	Clamp Meter Electrical Test Kit	CL120 Clamp Meter with Test Leads, NCVT-3P Dual Range Non-Contact Voltage Tester with Flashlight, ET40 Electronic AC/DC Voltage Tester, RT210 GFCI Receptacle Tester, Carrying Case, Instructions, and All Needed Batteries
MM320KIT	Digital Multimeter Electrical Test Kit	MM320 Auto-Ranging Digital Multimeter, NCVT-3P Dual Range Non-Contact Voltage Tester with Flashlight, ET45 AC/DC Voltage Tester, RT210 GFCI Receptacle Tester, Carrying Case, Instructions, and All Needed Batteries
NCVT3PKIT	Electrical Test Kit	NCVT3P Dual Range Non-Contact Voltage Tester with Flashlight, ET45 AC/DC Voltage Tester, and All Needed Batteries

Infrared Digital Thermometer with Targeting Laser

- Infrared Thermometer has an optical resolution (distance-to-spot) of 10:1
- Features include targeting laser; automatic hold; backlit display; low battery, auto power-off
- Measurement range is -4° to 752° Fahrenheit (-20° to 400° Celsius)
- Drop protection to 6.6' (2 m); certified to IEC EN 61326-1:2006, EN608251:1994+A2:2001+A1:2002
- Fixed emissivity at 0.95
- Includes custom pouch and a 9V battery
- Not a medical device; thermometer is NOT intended for use on people or animals



Cat. No.	Description	Batteries	Overall Length	Overall Width	Overall Height
IR1	Infrared Digital Thermometer with Targeting Laser, 10:1	1 x 9V	6.01" (15.3 cm)	1.24" (3.1 cm)	4.14" (10.5 cm)

IR1

NON-CONTACT VOLTAGE TESTERS



Non-Contact Voltage Testers

- Dual-range capabilities allow tester to detect from 12 to 1000V AC or 70 to 1000V AC for a broad variety of low-voltage or standard voltage applications
- Detects voltage with simultaneous visual and audible voltage indicators
- Lightweight, compact tool with pocket clip provides convenient storage and quick access
- Auto power-off feature conserves and extends battery life
- Screw-thread battery cap with O-ring
- CAT IV 1000V rating provides expanded operation and protection
- Cat. No. NCVT-3P features a bright flashlight to illuminate work area and may be used independent of voltage detection function
- Cat. No. NCVT-5A has a bright integrated laser pointer for identifying objects of interest at distance on the jobsite

Kits

- Cat. No. NCVT2PKIT includes Non-Contact Voltage Tester NCVT2P with 2 x AAA Batteries and a receptacle tester designed to detect the most common wiring problems in standard receptacles
- NCVT5KIT includes the Cat. No. RT210 Receptacle Tester which detects the most common wiring problems in both standard and GFCI receptacles

Features	NCVT-2P	NCVT-3P	NCVT-5A
Description	Dual Range	Dual Range with Flashlight	Dual Range with Laser Pointer
Drop Protection	6.6' (2 m)	6.6' (2 m)	9.8' (3 m)
Ingress Protection	IP54	IP67	-
Safety and Standards	CAT IV 1000V, CE	CAT IV 1000V, CE	CAT IV 1000V
Voltage	Mode 1: 12-1000V AC Mode 2: 70-1000V AC	Mode 1: 12-1000V AC Mode 2: 70-1000V AC	Mode 1: 12-1000V AC Mode 2: 70-1000V AC
Frequency Range	50-500Hz	50-500Hz	50-500Hz
Audible and Visual Alarms	●	●	●
Auto-Power Off	●	●	●
Temperature	-	-	-
Laser	-	-	Class 3a
Flashlight	-	●	-
Distance Measuring	-	-	-
LCD Display	-	-	-
Pocket Clip	●	●	●
Batteries Included	2 x AAA	2 x AAA	2 x AAA
Overall Length	5.83" (148.0 mm)	5.83" (148.0 mm)	6.00" (152.4 mm)
Overall Height	1.09" (2.8 cm)	1.09" (2.8 cm)	6" (15.2 cm)
Overall Width	0.86" (2.2cm)	0.93" (2.4 cm)	1.16" (2.9 cm)



Boscope for Android® Devices

- Boscope connects to Android® on-the-go (OTG) version 4.0 or higher devices; NOT for iPhones® or iPads®
- Waterproof IP67 9 mm camera surrounded by 6 LEDs for high quality 640 x 480 pixel images
- Capture and share images and video via text or email using the Klein Tools App available for download at kleintools.com/product/ET16 (not available anywhere else)
- Armored 10' (3 m) gooseneck cable for extended reach
- Direct USB Type-C connection with adapter for micro-USB
- No batteries needed; powered by device connection



ET16

Cat. No.	Resolution	Includes	Overall Length	Overall Height	Overall Width
ET16	640 x 480 max pixels	Boscope with 10' Gooseneck, USB Adapters, Carrying Case, and Instruction Manual	3.7" (9.4 cm)	0.95" (2.4 cm)	1.3" (3.3 cm)

Android® is a registered trademark of Google LLC. iPhone® is a registered trademark of Apple Inc.

GFCI Receptacle Tester with LCD

- GFCI Receptacle Tester features a large backlit LCD readout of voltage and clear indication of wiring faults
- LCD readout shows the time required to trip a GFCI device
- Detect and identify common wiring faults
- Auto-Hold is convenient for hard-to-reach outlets
- Bright green and red LEDs illuminate for visual indicators
- CAT II 135V safety rating
- Durable 6.6' (2 m) drop protection
- For use on 3-wire, North American 120V electrical outlets only



RT250



Featuring patent pending detection of Open Neutral, Open Ground, and wiring fault.

Cat. No.	Description	GFCI	Overall Length	Overall Height	Overall Width
RT250	GFCI Receptacle Tester with LCD	Yes, Including Time to Trip Device	4.5" (11.4 cm)	1.1" (27.9 cm)	2.0" (5.1 cm)

Rechargeable Thermal Imager

- Thermal Imager has over 10,000 pixels to troubleshoot hot and cold spots
- Adjustable emissivity from 0.10 to 0.99
- Store and share images with optional microSD® Card
- User selectable high and low temperature alarms from -4 to 752° Fahrenheit (-20 to 400° Celsius)
- Select color palettes to best capture the event
- Rechargeable lithium-ion battery
- Includes thermal imager, micro-USB® charging cable, carrying case, and instructions



T1250



Cat. No.	Description	Display	Display Resolution	Temperature Range	Batteries
T1250	Rechargeable Thermal Imager	2.4" (6.1 cm) TFT LCD	10,800 Pixels	-4° to 752°F (-20° to 400°C)	Lithium-Ion

*micro-USB® is a registered trademark of SD-3C, LLC.



CONSTRUCTION & STRUCTURAL TOOLS

Impact tools designed and engineered by Klein Tools in the USA to help linemen work more efficiently by reducing time and effort on the job. All with the performance and durability professionals expect from Klein.

Impact Tools
2-in-1 Impact Sockets
Parallel Jaw Grips

IMPACT TOOLS



Impact Tools

- Featuring 210 ft.-lbs. of torque for professional impact fastening and drilling
- Compact designs provide excellent balance and control in tight spaces or overhead applications
- Engineered and designed by Klein Tools in the USA
- Impact rated for installing and removing threaded fasteners into wood, metal and concrete
- BAT20CW features a 1/2" male square drive with a pin detente design for maximum socket retention
- Kits include 4 Ah Batteries, a charger and bag
- Powered by DEWALT® 20V lithium-ion batteries (sold separately)



BAT20CD



BAT20CW1



Cat. No.	Description	Drive Size	Rating	Maximum Speed	Voltage	Included
BAT20CD1	1/4" Compact Impact Driver Kit	1/4" Hex Quick Connect	210 ft.-lbs Torque	2200 RPM	20V Lithium-Ion	(2) 4 Ah Batteries, Charger and Bag
BAT20CD	1/4" Compact Impact Driver, Tool Only					Tool Only
BAT20CW1	1/2" Compact Impact Wrench Kit	1/2" Pin Detent	210 ft.-lbs Torque	2200 RPM	20V Lithium-Ion	(2) 4 Ah Batteries, Charger and Bag
BAT20CW	1/2" Compact Impact Wrench, Tool Only					Tool Only

*DEWALT® is a registered trademark of the Black & Decker corporation.





90° Impact Wrench

- Right angle impact wrench provides versatility for better reach around a utility pole with less effort
- Up to 300 ft-lbs of max torque for driving fasteners into wood, metal and concrete
- Patent pending bolt-through hole design for longer bolts
- Engineered and designed by Klein Tools in the USA
- Work light illuminates darker spaces
- Kit include 4 Ah Batteries, a charger and bag
- Powered by DEWALT® 20V lithium-ion batteries



Patent Pending
Through Hole
Design for
longer bolts



BAT20LWA



BAT20LWS



BAT20LW1

POWERED BY
DEWALT®

Cat. No.	Description	Drive Size	Rating	Maximum Speed	Voltage	Included
BAT20LW1	90° Impact Wrench Kit	1-1/8", 1", 13/16", 3/4" Square	300 ft-lbs	1800 RPM	20V Lithium-Ion	Tool, (2) 4 Ah Batteries, Charger and Bag
BAT20LW	90° Impact Wrench, Tool Only					Tool Only

Accessories

Cat. No.	Description	Drive Size	Socket Size	Number of Points
BAT20LWA	7/16" Adapter for 90° Impact Wrench	7/16"		
BAT20LWS	Replacement Socket for 90° Impact Wrench	1 1/8"	3/4", 13/16"	4

*DEWALT® is a registered trademark of the Black & Decker corporation.



IMPACT SOCKETS



2-in-1 Impact Socket Sets, 5-Piece

- Each Imperial and Metric set features 8 different sizes in 4 easy-to-carry sockets
- Consist of the most commonly used impact socket sizes in electrical and construction work
- Single-ended impact sockets with hands free adjustment between sizes
- Deep socket with 1/2" drive works great for hardware installation and removal
- Engineered for use with impact drivers
- Includes 1/4" hex by 1/2" hex square adapter
- Case for storage
- Replacement sockets available (sold separately)



Cat. No.	Socket Sizes	Points	Includes
66040	7/8" x 11/16", 3/4" x 9/16" 5/8" x 7/16" and 1/2" x 3/8"	12	1/4" Hex by 1/2" Hex Square Adapter Case for Storage
66050E	32 x 27 mm, 30 x 22 mm, 24 x 19 mm, and 17 x 13 mm		
Replacement Sockets and Adapter			
66041	Adapter	—	
66011	1/2" x 3/8"	12	
66012	5/8" x 7/16"		
66001	3/4" x 9/16"		
66014	7/8" x 11/16"		
66051E	17 x 13 mm		
66052E	24 x 19 mm		
66053E	30 x 22 mm		
66054E	32 x 27 mm		

2-in-1 Slotted Impact Socket

- Slot in the outer socket to tighten and loosen hot line clamp eye-bolts
- Alignment slot in inner socket
- Patent pending design
- Cross hole design to prevent unintentional separation of adapter and socket

Cat. No.	Socket Size	Points
66031	3/4" x 9/16"	12



66031

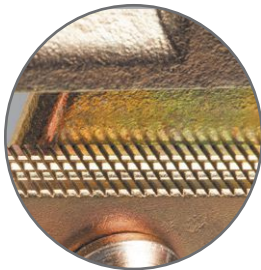


GRIPS



Parallel Jaw Grip 4500 Series for Guy Strand, EHS, Coated Cable

- Versatile grip holds a wider range of Guy Strand, EHS and coated cable sizes reducing the number of grips needed
- Round jaw holds 0.18" to 0.60" (4.57 to 15.20 mm) diameter cable range
- Spring closes grip on cable to hold the initial position
- Sawtooth jaw profile resists build-up from galvanized coating on guy strand and EHS cables
- Spring-loaded for easy one-handed operation
- Large opening in the handle accommodates a wide variety of hooks on hoists, winches and tackle blocks
- Max Safe Load of 5,000 lb (2,268 kg)



Sawtooth jaw profile resists build-up



Guy Strand, EHS and coated cable sizes



KT45005C

Cat. No.	Body Style	Nominal Guy Strand Sizes	Spring	Locking Handle	Jaw Length
KT45005C	Parallel	0.18" to 0.6" (4.57 to 15.2 mm)	Y	-	4" (10.2 cm)

Wire Pulling Grips Warnings

⚠WARNING: Grips are to be used for temporary installation, not for permanent anchorage.

⚠WARNING: When used on/or near energized lines, ground, insulate, or isolate grip before pulling.

⚠WARNING: Do not exceed rated capacity.

⚠WARNING: Always match proper size and type of grip to application.

⚠WARNING: Before each use, clean jaw area and inspect grip for proper operation to avoid slippage.

YOU PUT YOUR TRUST IN KLEIN PRODUCTS ON-THE-CLOCK, NOW TRUST THEM OFF-THE -CLOCK

Klein Tools has a variety of tools to make your customers forget about the stress of work and enjoy all that life has to offer.

98002BT Bottle Opener

98028 Leather Coasters, 6pk

98222 BBQ Tool Set

98288 Canvas Apron

98022 Key Chain



For a additional information on our promotional branded products, visit www.kleintools.com/catalog/branded-collection

BRANDED MERCHANDISING

For a complete line of our branded merchandise visit www.kleintools.com
For a complete line of our branded *personalized* merchandise visit www.kleintoolscanvas.com



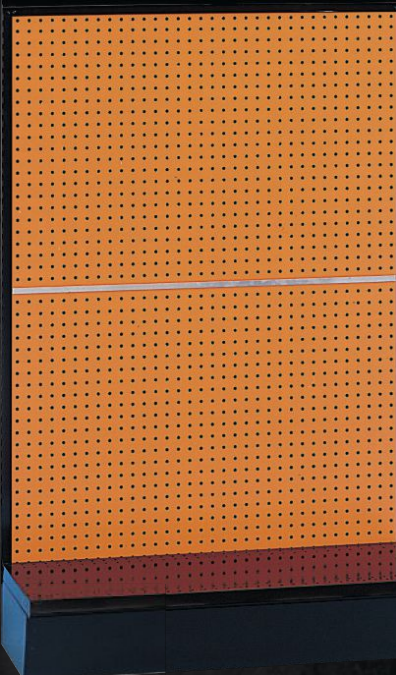
PERSONALIZED
MERCHANDISE



KLEIN TOOLS 



KLEIN TOOLS 



KLEIN TOOLS 



VISUAL
MERCHANDISING

For a complete line of our visual merchandising log in to www.service.kleintools.com.
Visual merchandising is for distributors only.

HAND TOOLS

JOB SITE

ELECTRICAL TESTING & INSTALLATION

CONSTRUCTION & STRUCTURAL TOOLS

HAND TOOLS

JOBSITE

ELECTRICAL TESTING & INSTALLATION

CONSTRUCTION & STRUCTURAL TOOLS



For over 164 years
Klein Tools has been the
brand professionals have
trusted to Power America!

That trust is invaluable to us, and every day we strive to keep building on that trust. We work hard each day to produce tools to help you perform your job better and more efficiently.

We look to you for feedback, good or bad, to continuously improve our product offerings. And we make every effort to develop, design and manufacture these tools right here in the USA. Our commitment is always to you, the customer, and to continue as a US manufacturer of quality tools.

That's why we're the
#1 choice
of Professional
Electricians
in the USA

Click Here
to view the full
line catalog

GO MOBILE

Sign up to receive text alerts about new products and chances to win **FREE** tools. Go to KleinTools.com for more information.

TRADESMAN CLUB 

Join the Tradesman Club at www.kleintradesmanclub.com for newest products, innovations and chances to win **FREE** tools



www.kleintools.com

94843 © 2021 Klein Tools, Inc.