



LAPCO **FR**

2020 Product Catalog

Flame-Resistant Workwear

PREMIUM SINCE 1989
WORKWEAR



The LAPCO Difference

LAPCO Manufacturing, Inc. is family owned and operated in Morgan City, Louisiana.

In 1989, Freddie Triche established Louisiana Apparel Company in the Triche family's backyard workshop. As a pipe welder himself, Freddie saw a need for high-quality protective apparel for welders. Freddie designed, patented, and began producing his leather arm pads with the help of his wife, Trudy. After receiving positive feedback from friends and local customers, Freddie began advertising his arm pads with a mail-in order form in a small welding publication. The demand for Freddie's leather arm pads grew from there, and the operation expanded to include high-quality welding shirts, welding leathers, and other accessories after a short time.

Over the last 3 decades, the industrial trades that use safety apparel have grown and evolved. Standards are in place to keep workers safe from hazards on the job. Workplaces have implemented safety cultures and employees are encouraged to work safely. Safety was the catalyst for the introduction of the LAPCO FR™ line of work clothing in 2005. Today we produce hundreds of protective products and offer many services with the same high standards for quality and family values that are inherent to the LAPCO brand.

LAPCO employees have a rich history and family legacies tied to some of the most dangerous industries in the world. Our families and friends have careers that bring them into hazardous conditions on a day-to-day basis. We are proud of the work that we are doing and the products that we produce. We know that the job we do keeps people all around the world safe from harm so that they can return to their families. That is why quality and integrity are so important to us. Our families wear LAPCO & LAPCO FR brand workwear, and we wouldn't dress you in anything less because you are a part of the family.

Premium Flame-Resistant



CONTENTS

BRAND INTRO	2
TABLE OF CONTENTS.....	3
PROTECTION & PERFORMANCE ICONOGRAPHY	4
FABRIC GUIDE.....	5

PRODUCTS

FR COVERALLS

SIZE CHART	6
DELUXE	8
CONTRACTOR, ECONOMY & WELDING	10
STYLE COMPARISON CHART	11

FR SHIRTS

SIZE CHARTS	12
T-SHIRTS, HENLEYS & HI-VIZ	14
UNIFORM & HI-VIZ	16
UNIFORM - BLENDS.....	18
WESTERN & WELDING	20

FR PANTS & JEANS

SIZE CHARTS	22
UNIFORM & CARGO	24
UTILITY, CARPENTER, RELAXED & BIBS	26

FR WINTER WEAR

SIZE CHARTS	28
HOODIES	30
COATS & JACKETS	32
COVERALLS, BIBS, & HOODS	34

WOMEN'S FR WORKEAR

SIZE CHARTS	36
NEW WOMEN'S PRODUCTS.....	38
UNIFORM SHIRTS, PANTS & JEANS	40

NON-FR WELDING SHIRTS & GEAR







SIZE CHARTS	40
SHIRTS	42
CAPS.....	44
UMBRELLAS	47

PRODUCT & SERVICE INFORMATION

WARRANTY	51
CUSTOMIZATION SERVICES.....	52
CUSTOMIZATION ORDER PROCESS	54
REFLECTIVE TRIM	55
INDUSTRY TERM QUICK REFERENCE.....	56
RETURN POLICY, MARKING & LABELING	58
LAUNDERING & RETIREMENT	59

Workwear

PROTECTION & PERFORMANCE ICONOGRAPHY

NFPA 70E Arc Flash PPE Categories			Search the UL Online Certifications directory for the reference numbers below to see certification documents or scan the QR codes provided.	
CATEGORY		REQUIRED MINIMUM		
	CAT 1	4 cal/cm ²	QGWB.MH49608 (NFPA 2112)	QGVZ.MH49608 (ASTM F1506)
	CAT 2	8 cal/cm ²		
	CAT 3	25 cal/cm ²		
	CAT 4	40 cal/cm ²		

PROTECTION STANDARDS

UL CLASSIFIED NFPA 2112 PRODUCTS



LAPCO FR™ products are UL Classified as meeting the requirements of NFPA 2112, Protective Clothing for Protection of Industrial Personnel Against Flash Fire. "Flame-resistant Clothing for Protection of Industrial Personnel Against Short-duration Thermal Exposures from Fire"

UL CLASSIFIED ASTM F1506 PRODUCTS



Certain LAPCO FR™ products are UL Classified as meeting the requirements of ASTM F1506, Protective Clothing for Electrical Workers. "Standard Performance Specification for Textile Materials for Wearing Apparel for Use by Electrical Workers Exposed to Momentary Arc and Related Thermal Hazards."

ANSI/ISEA 107-2015 PRODUCTS



LAPCO FR™ Hi-Viz Shirts (Pages 15 & 17) have been evaluated by third party testing and were found to meet the requirements of ANSI/ISEA 107-2015.

NFPA 70E COMPLIANT PRODUCTS



LAPCO FR™ products are compliant with NFPA 70E Standard for electrical safety in the workplace.

PERFORMANCE FEATURES



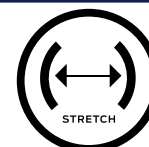
Moisture Wicking



Water Resistant



Wind Resistant



Stretch Fabric



Comfort Touch Fabric



Anti-Odor



Lightweight & Durable



Inherent Protection

FR FABRIC GUIDE



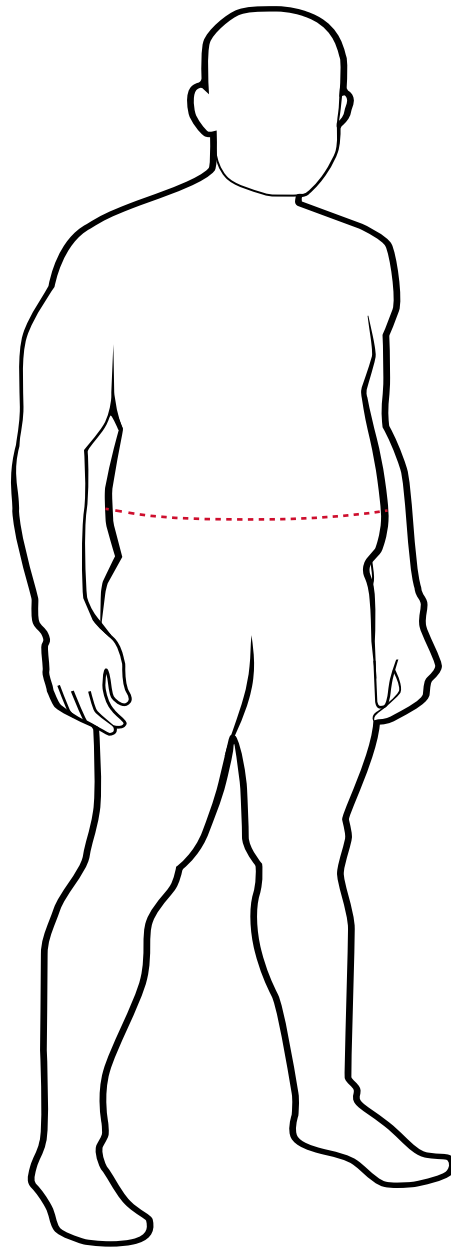
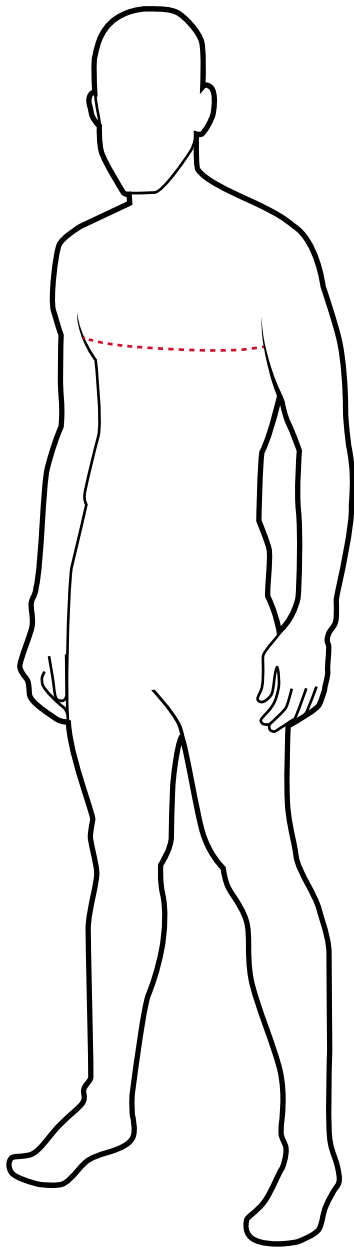
FABRIC	CONTENT
CAROLINA PROTECT-PROTECT 150 FORTE	6 oz, 88% Cotton 12% Nylon Blend, 3 x 1 Twill Weave
CAROLINA PROTECT- PROTECT 200 TWILL	7oz, 100% Cotton, Twill 2 x 1 Weave
CAROLINA PROTECT-PROTECT 200 FORTE	7oz, 88% Cotton 12% Nylon Blend, 3 x 1 Twill Weave
CAROLINA PROTECT-PROTECT 300 TWILL	9 oz, 100% Cotton, 3 x 1 Twill Weave
CAROLINA PROTECT-PROTECT 350 DENIM	10oz 100% Cotton Twill 2 x 1 Weave
CAROLINA PROTECT-PROTECT 400 TWILL	10oz 100% Cotton Gabardine 3 x 1 Twill Weave
CAROLINA PROTECT-PROTECT 300 DUCK CaroExtreme	8.5oz 100% Cotton PU Laminated 2x2 Basket Weave Duck - Water Repellent Windscreen
CAROLINA PROTECT-PROTECT 400 Lining	12oz 46% Cotton/50% FR Non Woven Modacrylic/4% FR Polyester-Quilted Lining
CAROLINA PROTECT-PROTECT 500 Lining	14oz. 40% Cotton/57% FR Non Woven Modacrylic/3% FR Polyester-Quilted Lining
CAROLINA PROTECT-PROTECT 450 DENIM	13oz 100% Cotton Twill 3 x 1 Weave
ANTEX 1950FM	6 oz, 93% Cotton 7% Spandex Blend Knit
ANTEX 2018FW PYROSAFE	7 oz, 100% Cotton Jersey Knit
ANTEX 865HFR	12.5 oz Cotton Blend Single Sided Fleece Knit
ANTEX 6103FR Inherent Pique	6.9oz. 50% Modacrylic / 40% Lyocel / 10% Twaron
WESTEX™ UltraSoft AC®	7oz, 88% Cotton 12% Nylon Blend, 3 x 1 Twill Weave
WESTEX™ UltraSoft	8.5oz Basket Weave, Fiber Content: 88% Cotton / 12 % High Tenacity Nylon
WESTEX® DH	6.5oz Twill 48% Tencel / 40% Modacrylic / 12% Para-aramid
DNA Technical Fabrics-Style# PF6065	11oz, 69% Cotton - 30% Modacrylic - 1% Elastane

Flame-Resistant Coveralls

How to Choose Your Coverall Size

If your chest measurement is larger than your waist measurement, use your chest measurement to find your size.

However, if your waist measurement is larger than your chest measurement, use your waist measurement to find your size.



LAPCO FR™

Coveralls Size Chart

- To find your coverall size, measure your chest, waist, and inseam. Choose the corresponding size.
- If you are between sizes, choose the larger size.
- When taking your measurements, use a cloth tape measure, not a metal one.
- Measurements should be taken over standard undergarments.
- If you plan to wear clothing beneath your coveralls, order one size larger to accommodate the extra garments.

CVFRD7 • CVEFR7 • CVIN9 • CVDHF6

ALPHA COVERALL SIZING (inches)									
ALPHA SIZES	SM	MED	LAR	XL	2XL	3XL	4XL	5XL	6XL
CHEST/WAIST	34-36	38-40	42-44	46-48	50-52	54-56	58-60	62-64	66-68
NOTE:	<i>If waist size is larger than chest size, use your waist measurement to find your size.</i>								

GOCD6 • GOCD7

NUMERIC COVERALL SIZING (inches)																		
NUMERIC SIZE																		
CHEST/WAIST	34	36	38	40	42	44	46	48	50	52	54	56	58	60	62	64	66	68
ALPHA EQUIVALENT	SM	MED	LG	XL	2XL	3XL	4XL	5XL	6XL									
NOTE:	<i>If waist size is larger than chest size, use your waist measurement to find your size.</i>																	

INSEAM LENGTHS	
LENGTH	INSEAM
SHO	28" inseam with short length torso
REG	30" inseam with standard length torso
TAL	32" inseam with tall length torso
XTA	34" inseam with extra tall length torso

Differences between LAPCO FR Regular Sizing & Short, Tall, and Extra Tall:

-Short sizes are 1/2" shorter than Regular sizes in the Torso.
 -Short sleeve lengths are 1" shorter than Regular sleeve lengths.

-Tall sizes are 1/2" longer than Regular sizes in the Torso.
 -Tall sleeve lengths are 1" longer than Regular sleeve lengths.

-Extra Tall sizes are 1" longer than Regular sizes in the Torso.
 -Extra Tall sleeve lengths are 1.5" longer than Regular sleeve lengths.

****Stock sizes shown. Special order sizes may be available by request.**



CAT
2

7oz. FR Deluxe Coveralls

Style#: CVFRD7

Colors: Gray [CVFRD7GY]
Khaki [CVFRD7KH]
Navy [CVFRD7NY]
Orange [CVFRD7OR]
Red [CVFRD7RE]
Royal [CVFRD7RO]
Spruce Green [CVFRD7SG]

Sizes: SM, MED, LG, XL, 2XL,
3XL, 4XL, 5XL, 6XL

Lengths: SHO, REG, TAL, XTA



Material: 7oz. 100% Flame-Resistant Cotton Twill with a moisture management finish

Certs: ATPV 8.7 cal/cm², HRC/CAT 2, NFPA 70E Compliant, UL Classified ASTM F1506, UL Classified NFPA 2112



CAT
2

6.5oz. DH FR Deluxe 2.0 Coveralls

Style#: CVDHF6

Colors: Khaki [CVDHF6KH]
Navy [CVDHF6NY]
Royal [CVDHF6RO]

Sizes: SM, MED, LG, XL, 2XL,
3XL, 4XL, 5XL, 6XL

Lengths: SHO, REG, TAL, XTA



Material: 6.5oz. Westex® DH Twill - 8% Tencel /40% Modacrylic / 12% Para-aramid

Certs: ATPV 8.9 cal/cm², HRC/CAT 2, NFPA 70E Compliant, UL Classified NFPA 2112

FR COVERALLS

Men's



CAT
2



7oz. FR Deluxe Coveralls

Style#: GOCD7

Colors: Light Gray [GOCD7LG]
Khaki [GOCD7KH]
Navy [GOCD7NY]

Sizes: 34, 36, 38, 40, 42, 44, 46,
48, 50, 52, 54, 56, 58, 60,
62, 64, 66, 68

Lengths: SHO, REG, TAL, XTA



Material: 7oz. 88/12 Flame-Resistant Cotton/Nylon Blend with a moisture management finish

Certs: ATPV 8.9 cal/cm², HRC/CAT 2, NFA 70E Compliant, UL Classified ASTM F1506, UL Classified NFA 2112



CAT
2



6oz. FR Deluxe Coveralls

Style#: GOCD6

Colors: Gray [GOCD6GY]
Khaki [GOCD6KH]
Navy [GOCD6NY]

Sizes: 34, 36, 38, 40, 42, 44, 46,
48, 50, 52, 54, 56, 58, 60,
62, 64, 66, 68

Lengths: SHO, REG, TAL, XTA



Material: 6oz. 88/12 Flame-Resistant Cotton/Nylon Blend with a moisture management finish

Certs: ATPV 8.8 cal/cm², HRC/CAT 2, NFA 70E Compliant, UL Classified NFA 2112, UL Classified ASTM F1506



CAT
2

7oz. FR Economy Coveralls

Style#: CVEFR7

Colors: Gray [CVEFR7GY]
Khaki [CVEFR7KH]
Navy [CVEFR7NY]
Royal [CVEFR7RO]

Sizes: SM, MED, LG, XL, 2XL,
3XL, 4XL, 5XL, 6XL

Lengths: REG, TAL



Material: 7oz. 100% Flame-Resistant Cotton Twill with a moisture management finish

Certs: ATPV 8.7 cal/cm², HRC/CAT 2, NFA 70E Compliant, UL Classified ASTM F1506, UL Classified NFA 2112



CAT
2

9oz. FR Welding Coveralls

Style#: CVIN9

Colors: Navy [CVIN9NY]

Sizes: SM, MED, LG, XL, 2XL,
3XL, 4XL, 5XL, 6XL

Lengths: SHO, REG, TAL, XTA



Material: 9oz. 100% Flame-Resistant Cotton Twill with a moisture management finish

Certs: ATPV 13.2 cal/cm², HRC/CAT 2, NFA 70E Compliant, UL Classified ASTM F1506, UL Classified NFA 2112

LAPCO FR - Coverall Styles Comparison Chart

FEATURES AVAILABLE	ECONOMY	WELDER/ CONTRACTOR	DELUXE 2.0	DELUXE
Sewn with Nomex® thread.	✓	✓	✓	✓
Covered brass zippers with Nomex® tape.	✓	✓	✓	✓
Double needle stitching on inseams, out seams, and arms.	✓			
Triple needle stitching on the inseam, out seams, and arms.		✓	✓	✓
Elastic at back of waist.		✓	✓	✓
Glove clip loop at waist.				✓
Mic loops at shoulders.			✓	
Covered metal snaps at placket.		✓	✓	✓
Covered metal snaps at chest pockets.			✓	
Covered metal snaps at leg cuff.		✓	✓	✓
Covered metal snaps at wrist cuff.		✓	✓	✓
Black plastic snaps at wrist cuff.	✓			
Black plastic snaps at chest pockets.	✓			
Black plastic snaps at placket.	✓			
Pencil hole on left chest pocket flap.			✓	
Pencil pocket on left arm.		✓	✓	✓
Pencil pocket on left chest.				✓
Reach through at hip pockets.		✓	✓	✓
Right back patch pocket & left back zip close patch pocket.			✓	✓
Tally book pocket on the left leg.				✓
Two hip pockets.	✓	✓	✓	✓
Utility pocket on right leg.		✓	✓	✓
Two back patch pockets.	✓	✓		
Two zippered chest pockets.				✓
Two patch-style chest pockets with snap close pocket flaps.			✓	
Two patch-style chest pockets.		✓		
Two snap close patch-style chest pockets.	✓			

Flame-Resistant Shirts

LAPCO FR™

Uniform, Western & Welding Shirts Size Chart

- To find your shirt size, use your neck and sleeve measurements.
- If you are in between sizes, choose the larger size.

ALPHA TO NUMERIC SHIRT SIZING					
		SLEEVE LENGTHS			
ALPHA SIZE	NECK SIZE	SHO	REG	LON	XLO
SM	14.5	31	32	33	34
	15	32	33	34	35
MED	15.5	32	33	34	35
	16	33	34	35	36
LAR	16.5	33	34	35	36
	17	34	35	36	37
XL	17.5	34	35	36	37
	18	34	35	36	37
2XL	19	35	36	37	38
3XL	20	35	36	37	38
4XL	22	36	37	38	39
5XL	23	36	37	38	39
6XL	24	36	37	38	39

Uniform Shirts - Differences between Regular Sizing & Short, Long, and Extra Long:

- Short sizes are 2" shorter than Regular sizes in the Torso.
- Long sizes are 2" longer than Regular sizes in the Torso.
- Extra Tall sizes are 5" longer than Regular sizes in the Torso.

*Stock sizes shown. Special order sizes may be available by request.

NOTE:

When taking your measurements, use a cloth tape measure, not a metal one. Measurements should be taken over standard undergarments.

LAPCO FR™

Henley Shirts Size Chart

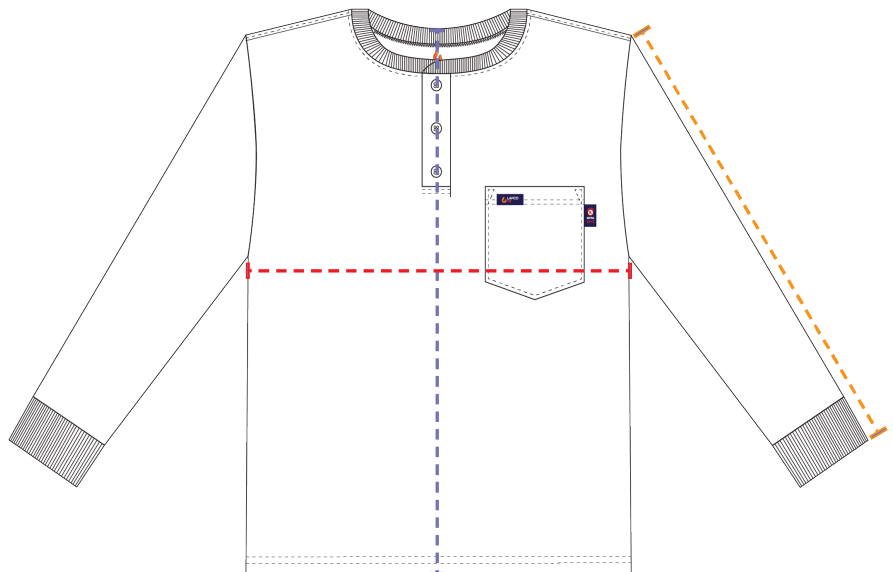
- To find your shirt size, use your chest measurement.
- **Double the chest width below and match to your chest measurement.**
- If you are in between sizes, choose the larger size.

SHIRT MEASUREMENTS					
ALPHA SIZE	CHEST WIDTH	SHIRT LENGTH		SLEEVE LENGTH	
		REG	LON	REG	LON
SM	19 ½	29	31	25 ⅞	28
MED	21	29 ⅞	31 ¾	26 ⅜	28 ½
LAR	22 ½	30 ¾	32 ⅝	26 ⅞	29
XL	24	31 ⅝	33 ½	27 ⅜	29 ½
2XL	25 ½	32 ½	34 ⅜	27 ⅞	30
3XL	27	33 ⅜	35 ¼	28 ⅜	30 ½
4XL	28 ½	34 ¼	36 ⅞	28 ⅞	31
5XL	30	35 ⅞	37	29 ⅜	31 ½
6XL	31 ½	36	38	29 ⅞	32

NOTE:

When taking your measurements, use a cloth tape measure, not a metal one. Measurements should be taken over standard undergarments.

*Stock sizes shown. Special order sizes may be available by request.



T-Shirts, Henleys & Hi-Viz



CAT
2

- 
- 
- 
- 
- 
- 

6oz. FR Pocket T-Shirts

Style#: FRT-USHLSP6

Colors: Gray [FRT-USHLS6GY]
Khaki [FRT-USHLS6KH]
Navy [FRT-USHLS6NY]

Sizes: SM, MED, LG, XL, 2XL,
3XL, 4XL, 5XL, 6XL

Lengths: REG, LON



Material: 6oz. Flame-Resistant
93% Cotton 7% Spandex Knit
with Moisture Management

Certs: ATPV 8.1 cal/cm², HRC/CAT 2,
NFA 70E Compliant,
UL Classified NFA 2112



CAT
2

- 
- 
- 
- 
- 

7oz. FR Henley Tees

Style#: FRT-HJE

Colors: Gray [FRT-HJE GRY]
Khaki [FRT-HJE KHA]
Medium Blue [FRT-HJE MBL]
Navy [FRT-HJE NVY]

Sizes: SM, MED, LG, XL, 2XL, 3XL,
4XL, 5XL, 6XL

Lengths: REG, LON



Material: 7oz. FR 100% Cotton Jersey Knit

Certs: ATPV 8.9 cal/cm², HRC/CAT 2,
NFA 70E Compliant,
UL Classified NFA 2112

TYPE R CLASS 2



Material: 7oz. Flame-Resistant Hi-Viz 50% Modacrylic, 40% Lyocel, 10% Twaron Blend Knit
Anti-Odor & Moisture Management



7oz. FR Hi-Viz Henley Tees

Style#: FRT-HJE HV2

Colors: Hi-Viz Yellow-Green [FRT-HJE HV2]

Sizes: SM, MED, LG, XL, 2XL, 3XL, 4XL, 5XL, 6XL

Lengths: REG, LON



Certs: ATPV 16.4 cal/cm², HRC/CAT 2, NFA 70E Compliant, UL Classified NFA 2112, ANSI/ISEA 107-2015 | TYPE R | Class 2

TYPE R CLASS 3



Material: 7oz. Flame-Resistant Hi-Viz 50% Modacrylic, 40% Lyocel, 10% Twaron Blend Knit
Anti-Odor & Moisture Management



7oz. FR Hi-Viz Henley Tees

Style#: FRT-HJE HV3

Colors: Hi-Viz Yellow-Green [FRT-HJE HV3]

Sizes: SM, MED, LG, XL, 2XL, 3XL, 4XL, 5XL, 6XL

Lengths: REG, LON



Certs: ATPV 16.4 cal/cm², HRC/CAT 2, NFA 70E Compliant, UL Classified NFA 2112, ANSI/ISEA 107-2015 | TYPE R | Class 3



CAT
2

7oz. FR Uniform Shirts

Style#: IXXX7

Colors: Gray [IGR7]
Khaki [IKH7]
Navy [INV7]
Medium Blue [IMB7]
Orange [IORA7]
Red [IRE7]
Royal [IRO7]

Sizes: SM, MED, LG, XL, 2XL,
3XL, 4XL, 5XL, 6XL

Lengths: REG, LON



Material: 7oz. 100% Flame-Resistant Cotton Twill with a moisture management finish

Certs: ATPV 8.7 cal/cm², HRC/CAT 2, NFPA 70E Compliant, UL Classified ASTM F1506, UL Classified NFPA 2112



CAT
2

7oz. FR Striped Uniform Shirts

Style#: IBW7

Colors: Blue & White Stripe [IBW7]

Sizes: SM, MED, LG, XL, 2XL,
3XL, 4XL, 5XL, 6XL

Lengths: REG, LON



Material: 7oz. 100% Flame-Resistant Cotton Twill with a moisture management finish

Certs: ATPV 8.7 cal/cm², HRC/CAT 2, NFPA 70E Compliant, UL Classified ASTM F1506, UL Classified NFPA 2112

FR SHIRTS

Men's

TYPE R CLASS 2



CAT
2



7oz. FR Hi-Viz Uniform Shirts

Style#: IHV7C2

Colors: Hi-Viz Yellow/Green
[IHV7C2]

Sizes: SM, MED, LG, XL, 2XL,
3XL, 4XL, 5XL, 6XL

Lengths: REG, LON



Material: 7oz. Flame-Resistant 100% Cotton with moisture management finish

Certs: ATPV 8.7 cal/cm², HRC/CAT 2, NFA 70E Compliant, ANSI/ISEA 107-2015 | TYPE R | CLASS 2, UL Classified ASTM F1506, UL Classified NFA 2112

TYPE R CLASS 3



CAT
2



7oz. FR Hi-Viz Uniform Shirts

Style#: IHV7C3

Colors: Hi-Viz Yellow/Green
[IHV7C3]

Sizes: SM, MED, LG, XL, 2XL,
3XL, 4XL, 5XL, 6XL

Lengths: REG, LON



Material: 7oz. Flame-Resistant 100% Cotton with moisture management finish

Certs: ATPV 8.7 cal/cm², HRC/CAT 2, NFA 70E Compliant, ANSI/ISEA 107-2015 | TYPE R | CLASS 3, UL Classified ASTM F1506, UL Classified NFA 2112

Uniform Shirts - Blends



CAT
2

6.5oz. DH FR Uniform Shirts



Style#: DHS6



Colors: Khaki [DHS6KH]
Navy [DHS6NY]
Royal [DHS6RO]



Sizes: SM, MED, LG, XL, 2XL,
3XL, 4XL, 5XL, 6XL



Lengths: REG, LON



 Westex® DH

Material: 6.5oz. Westex® DH
48% Tencel / 40% Modacrylic / 12% Para-aramid

Certs: ATPV 8.9 cal/cm², HRC/CAT 2, NFPA 70E
Compliant, UL Classified NFPA 2112

~ Advanced Comfort ~



CAT
2

7oz. FR Uniform Shirts



Style#: GOSAC7



Colors: Gray [GOSAC7GY]
Khaki [GOSAC7KH]
Medium Blue [GOSAC7MB]
Navy [GOSAC7NY]



Sizes: SM, MED, LG, XL, 2XL, 3XL,
4XL, 5XL, 6XL



Lengths: REG, LON



 Westex
UltraSoft AC®



Material: 7oz. Advanced Comfort 88% Long Staple Cotton/
12% Nylon Blend Twill with an UltraSoft Finish

Certs: ATPV 8.3 cal/cm², HRC/CAT 2, NFPA 70E
Compliant, UL Classified ASTM F1506, UL
Classified NFPA 2112



CAT
2



6oz. FR Uniform Shirts

Style#: GOS6

Colors: Gray [GOS6GY]
Khaki [GOS6KH]
Navy [GOS6NY]

Sizes: SM, MED, LG, XL, 2XL,
3XL, 4XL, 5XL, 6XL

Lengths: REG, LON



Material: 6oz. 88/12 Cotton-Nylon Blend with a moisture management finish

Certs: ATPV 8.8 cal/cm², HRC/CAT 2, NFA 70E Compliant, UL Classified ASTM F1506, UL Classified NFA 2112



CAT
2



7oz. FR Uniform Shirts

Style#: GOS7

Colors: Light Gray [GOS7LG]
Khaki [GOS7KH]
Navy [GOS7NY]

Sizes: SM, MED, LG, XL, 2XL,
3XL, 4XL, 5XL, 6XL

Lengths: REG, LON



Material: 7oz. 88/12 Cotton-Nylon Blend with a moisture management finish

Certs: ATPV 8.9 cal/cm², HRC/CAT 2, NFA 70E Compliant, UL Classified ASTM F1506, UL Classified NFA 2112



CAT
2

7oz. FR Two-Tone Western Shirts

Style#: IKB7

Colors: Khaki/Brown [IKB7]

Sizes: SM, MED, LG, XL, 2XL,
3XL, 4XL, 5XL, 6XL

Lengths: REG, LON



Material: 7oz. 100% Flame-Resistant Cotton Twill with a moisture management finish

Certs: ATPV 8.7 cal/cm², HRC/CAT 2, NFPA 70E Compliant

 **WHITE PEARL SNAPS!**



CAT
2

9oz. FR Welding Shirts

Style#: INNWS

Colors: Navy [INNWS]

Sizes: 14 1/2, 15, 15 1/2, 16, 16
1/2, 17, 17 1/2, 18, 19,
20, 22, 23, 24

Lengths: S, M, L, XL



Material: 9oz. 100% Flame-Resistant Cotton Twill with a moisture management finish

Certs: ATPV 13.2 cal/cm², HRC/CAT 2, NFPA 70E Compliant, UL Classified ASTM F1506, UL Classified NFPA 2112

FR SHIRTS

Men's



WHITE PEARL SNAPS!



CAT
2

7oz. FR Western Shirts

Style#: IXX7WS

Colors: Gray [IGR7WS]
Khaki [IKH7WS]
Navy [INV7WS]

Sizes: SM, MED, LG, XL, 2XL,
3XL, 4XL, 5XL, 6XL

Lengths: REG, LON



Material: 7oz. 100% Flame-Resistant Cotton Twill with a moisture management finish

Certs: ATPV 8.7 cal/cm², HRC/CAT 2, NFA 70E Compliant, UL Classified ASTM F1506, UL Classified NFA 2112



WHITE PEARL SNAPS!



CAT
2

10oz. FR Welding Shirts

Style#: INKWS

Colors: Khaki [INKWS]

Sizes: 14 1/2, 15, 15 1/2, 16, 16 1/2, 17, 17 1/2, 18, 19, 20, 22, 23, 24

Lengths: S, M, L, XL



Material: 10oz. 100% Flame-Resistant Cotton Gabardine Twill with a moisture management finish

Certs: ATPV 11 cal/cm², HRC/CAT 2, NFA 70E Compliant, UL Classified ASTM F1506, UL Classified NFA 2112

Flame-Resistant Jeans & Pants

LAPCO FR™ Denim Bibs Size Chart

- To find your denim bib size, choose the alpha size that corresponds to your preferred jeans waist size.
- *If you are between sizes, or like a looser fit, choose the larger size.*
- **NOTE:** When taking your measurements, use a cloth tape measure, not a metal one. Measurements should be taken over standard undergarments.

UNLINED BIB OVERALLS SIZES*																					
Jeans Waist	30	32	32	34	36	38	38	40	40	42	42	44	44	46	48	50	52	54	54	56	58
Order Size	SM		MED		LAR		XL		2XL		3XL		4XL		5XL		6XL				

FR DENIM BIB OVERALL LENGTHS*	
LENGTHS	FITS MEN'S HEIGHT
SHO	5'4" - 5'7"
REG	5'8" - 6'0"
TAL	6'1" - 6'5"

*Stock sizes shown. Special order sizes may be available by request.

LAPCO FR™

Jeans & Pants Size Chart

- To find your pants size, measure your waist and inseam. Choose the corresponding size.
- *If you are between sizes, or like a looser fit, choose the larger size.*
- **NOTE:** When taking your measurements, use a cloth tape measure, not a metal one. Measurements should be taken over standard undergarments.

FR PANTS & JEANS SIZE CHART*																	
Waist Measurement	28	30	32	34	36	38	40	42	44	46	48	50	52	54	56	58	60
Hip Measurement	34	36	38	40	42	44	46	48	50	52	54	56	58	60	62	64	66
Suggested Size	28	30	32	34	36	38	40	42	44	46	48	50	52	54	56	58	60

FR JEANS & PANTS INSEAMS*					
AVAILABLE INSEAMS					
28	30	32	34	36	38

*Stock sizes shown. Special order sizes may be available by request.

- NEW inset side entry slit pocket style with zip closure on right leg.
- NEW Moss Green color option.



8.5oz. FR Canvas Jeans

Style#:	P-BWCJ85
Colors:	Khaki [P-BWCJ85KH] Moss Green [P-BWCJ85MG] Navy [P-BWCJ85NY]
Waist Sizes:	28, 30, 32, 34, 36, 38, 40, 42, 44, 46, 48, 50, 52, 54, 56, 58, 60
Inseams:	28, 30, 32, 34, 36, 38
Material:	8.5oz. 88% Cotton/ 12% Nylon Basket Weave Canvas with an UltraSoft Finish
Certs:	ATPV 9.8 cal/cm ² , HRC/CAT 2, NFPA 70E Compliant, UL Classified ASTM F1506, UL Classified NFPA 2112



9oz. FR Cargo Pants

Style#:	P-INCXXT9
Colors:	Khaki [P-INCKHT9] Navy [P-INCNYT9]
Waist Sizes:	28, 30, 32, 34, 36, 38, 40, 42, 44, 46, 48, 50, 52, 54, 56, 58, 60
Inseams:	28, 30, 32, 34, 36, 38
Material:	9oz. 100% Flame-Resistant Cotton Twill with a moisture management finish
Certs:	ATPV 13.2 cal/cm ² , HRC/CAT 2, NFPA 70E Compliant, UL Classified ASTM F1506, UL Classified NFPA 2112

FR Uniform Pants with added cargo pockets!



6.5oz. DH FR Uniform Cargo Pants

Style#:	P-DH6XXCP
Colors:	Khaki [P-DH6KHCP] Navy [P-DH6NYCP]
Waist Sizes:	28, 30, 32, 34, 36, 38, 40, 42, 44, 46, 48, 50, 52, 54, 56, 58, 60
Inseams:	28, 30, 32, 34, 36, 38
Material:	6.5oz. Westex® DH 48% Tencel / 40% Modacrylic / 12% Para-aramid
Certs:	ATPV 8.9 cal/cm ² , HRC/CAT 2, NFPA 70E Compliant, UL Classified NFPA 2112



FR PANTS & JEANS

Men's

Looking for pants or jeans with a size 29, 31, 33, 35, or 37 waist? **Need a 29, 31, 33, 35, or 37" inseam?**
 Odd sizes are available by special order. Contact your retailer for more information.

Advanced Comfort



7oz. FR Uniform Pants

Style#:	P-XXX7
Colors:	Gray [P-GRY7] Khaki [P-INK] Navy [P-INN7] Orange [P-ORA7] Red [P-IRE7] Royal [P-IRO7]
Waist Sizes:	28, 30, 32, 34, 36, 38, 40, 42, 44, 46, 48, 50, 52, 54, 56, 58, 60
Inseams:	28, 30, 32, 34, 36, 38
Material:	7oz. 100% Flame-Resistant Cotton Twill with a moisture management finish
Certs:	ATPV 8.7 cal/cm ² , HRC/CAT 2, NFPA 70E Compliant, UL Classified ASTM F1506, UL Classified NFPA 2112

7oz. FR Uniform Pants

Style#:	P-XXXAC
Colors:	Gray [P-GRYAC] Khaki [P-INKAC] Navy [P-INNAC]
Waist Sizes:	28, 30, 32, 34, 36, 38, 40, 42, 44, 46, 48, 50, 52, 54, 56, 58, 60
Inseams:	28, 30, 32, 34, 36, 38
Material:	7oz., Advanced Comfort 88% Long Staple Cotton/12% Nylon Blend Twill with UltraSoft Finish
Certs:	ATPV 8.3 cal/cm ² , HRC/CAT 2, NFPA 70E Compliant, UL Classified ASTM F1506, UL Classified NFPA 2112



Utility, Carpenter, Relaxed & Bibs



\$1 - DONATED for every pair of FR Utility Jeans purchased.
Your purchase supports FALLEN LINEMEN ORGANIZATION!



11oz. FR Comfort Flex Jeans

Style#:	P-INDFC11
Colors:	Indigo Wash [P-INDFC11]
Waist Sizes:	28, 30, 32, 34, 36, 38, 40, 42, 44, 46, 48, 50, 52, 54, 56, 58, 60
Inseams:	28, 30, 32, 34, 36, 38
Material:	11oz. Flame-Resistant Comfort Flex Denim 69% Cotton/30% Modacrylic /1% Elastane
Certs:	ATPV 14 cal/cm ² , HRC/CAT 2, NFPA 70E Compliant, UL Classified NFPA 2112

10oz. FR Utility Jeans

Style#:	P-INDM10U
Colors:	Medium Washed Denim [P-INDM10U]
Waist Sizes:	28, 30, 32, 34, 36, 38, 40, 42, 44, 46, 48, 50, 52, 54, 56, 58, 60
Inseams:	28, 30, 32, 34, 36, 38
Material:	10oz. Flame-Resistant 100% Cotton Denim
Certs:	ATPV 15 cal/cm ² , HRC/CAT 2, NFPA 70E Compliant, UL Classified ASTM F1506, UL Classified NFPA 2112

10oz. FR Modern Carpenter Jeans

Style#:	P-INDC10
Colors:	Medium Washed Denim [P-INDC10]
Waist Sizes:	28, 30, 32, 34, 36, 38, 40, 42, 44, 46, 48, 50, 52, 54, 56, 58, 60
Inseams:	28, 30, 32, 34, 36, 38
Material:	10oz. Flame-Resistant 100% Cotton Denim
Certs:	ATPV 15 cal/cm ² , HRC/CAT 2, NFPA 70E Compliant, UL Classified ASTM F1506, UL Classified NFPA 2112



FR PANTS & JEANS

Men's

Looking for pants or jeans with a size 29, 31, 33, 35, or 37 waist?

Need a 29, 31, 33, 35, or 37" inseam?

Odd sizes are available by special order. Contact your retailer for more information.



10oz. FR Modern Jeans

Style#: **P-INDM10**

Colors: **Dirty Washed Denim [P-INDM10]**

Waist Sizes: 28, 30, 32, 34, 36, 38, 40, 42, 44, 46, 48, 50, 52, 54, 56, 58, 60

Inseams: 28, 30, 32, 34, 36, 38

Material: 10oz. Flame-Resistant 100% Cotton Denim

Certs: ATPV 15 cal/cm², HRC/CAT 2, NFPA 70E Compliant, UL Classified ASTM F1506, UL Classified NFPA 2112

13oz. FR Relaxed Jeans

Style#: **D-PIND**

Colors: **Washed Denim [D-PIND]**

Waist Sizes: 28, 30, 32, 34, 36, 38, 40, 42, 44, 46, 48, 50, 52, 54, 56, 58, 60

Inseams: 28, 30, 32, 34, 36, 38

Material: 13oz. Flame-Resistant 100% Cotton Denim

Certs: ATPV 18 cal/cm², HRC/CAT 2, NFPA 70E Compliant, UL Classified NFPA 2112, UL Classified ASTM F1506

13oz. FR Carpenter Jeans

Style#: **P-INDC**

Colors: **Washed Denim [P-INDC]**

Waist Sizes: 28, 30, 32, 34, 36, 38, 40, 42, 44, 46, 48, 50, 52, 54, 56, 58, 60

Inseams: 28, 30, 32, 34, 36, 38

Material: 13oz. Flame-Resistant 100% Cotton Denim

Certs: ATPV 18 cal/cm², HRC/CAT 2, NFPA 70E Compliant, UL Classified NFPA 2112, UL Classified ASTM F1506

13oz. FR Denim Bib Overalls

Style#: **B13FRDN**

Colors: **Washed Denim [B13FRDN]**

Sizes: SM, MED, LG, XL, 2XL, 3XL, 4XL, 5XL, 6XL

Lengths: SHO, REG, TAL, XTA

Material: 13oz. Flame-Resistant 100% Cotton Denim

Certs: ATPV 18 cal/cm², HRC/CAT 2, NFPA 70E Compliant, UL Classified ASTM F1506, UL Classified NFPA 2112

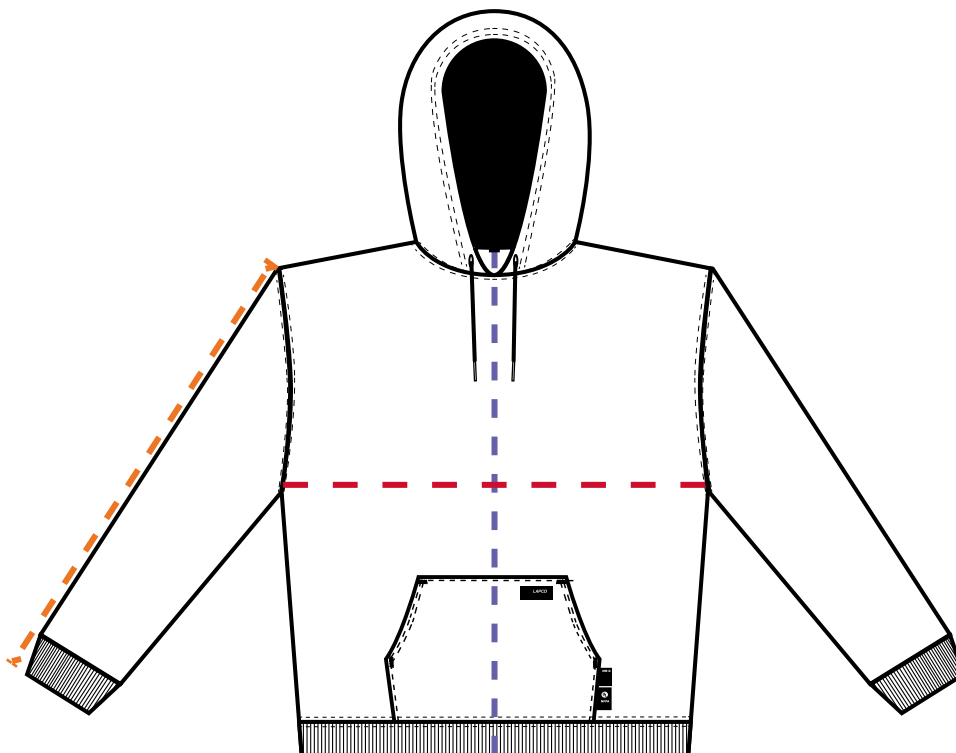


LAPCO FR™

Hoodies & Zipper Hoodies Size Chart SWHFRI4 & SWHFRI4Z

- To find your size, use your chest measurement.
- If you are in between sizes, choose the larger size.
- NOTE: When taking your measurements, use a cloth tape measure, not a metal one.
- Measurements should be taken over standard undergarments.

HOODIE SIZING			
ALPHA SIZE	CHEST	SLEEVE LENGTH	BACK LENGTH
SM	34-36	26 1/4	26 3/8
MED	38-40	26 3/4	27
LAR	42-44	27 1/4	27 1/2
XL	46-48	27 3/4	28 1/8
2XL	50-52	28 1/4	28 5/8
3XL	54-56	28 3/4	29 1/4
4XL	58-60	29 1/4	29 3/4
5XL	62-64	29 3/4	30 3/8
6XL	66-68	30 1/4	30 7/8



LAPCO FR™

Winter Wear Size Chart

Insulated Coats, Jackets, Bibs & Coveralls

- To find your jacket size, measure your chest.
- For insulated coverall sizing, use chest and inseam measurements.
- **If your waist size is larger than your chest size, use your waist measurement to choose your size.**
- To find your insulated bib overall size, use your waist and inseam measurements.
- **NOTE:** When taking your measurements, use a cloth tape measure, not a metal one.
- Measurements should be taken over standard undergarments.
- **PRO TIP :** If you plan to wear clothing beneath your bibs or coveralls, choose a larger size, to accommodate the extra garments.

COATS, JACKETS, INSULATED BIBS & COVERALLS SIZING

ALPHA SIZES	SM	MED	LAR	XL	2XL	3XL	4XL	5XL	6XL
CHEST/WAIST MEASUREMENT	30-32"	34-36"	38-40"	42-44"	46-48"	50-52"	54-56"	58-60"	62-64"

FR INSULATED COVERALL & OVERALL LENGTHS*

LENGTHS	Inseam	HEIGHT
REG	30-32"	5'8" - 6'0"
TAL	33-35"	6'1" - 6'5"



12.5oz. FR Hoodie Sweatshirts

Style#:	SWHFR14NY
Colors:	Navy [SWHFR14NY]
Sizes:	SM, MED, LG, XL, 2XL, 3XL, 4XL, 5XL, 6XL
Lengths:	REG
Material:	12.5oz. 95/5 Cotton-Spandex Blend Fleece
Certs:	ATPV 17 cal/cm ² , HRC/CAT 2, NFPA 70E Compliant, UL Classified NFPA 2112



12.5oz. FR Full Zip Hoodies

Style#:	SWHFR14ZNY
Colors:	Navy [SWHFR14ZNY]
Sizes:	SM, MED, LG, XL, 2XL, 3XL, 4XL, 5XL, 6XL
Lengths:	REG
Material:	12.5oz. 95/5 Cotton-Spandex Blend Fleece
Certs:	ATPV 17 cal/cm ² , HRC/CAT 2, NFPA 70E Compliant, UL Classified NFPA 2112





7oz. FR Utility Jackets

Style#:	JUFR7NY
Colors:	Navy [JUFR7NY]
Sizes:	SM, MED, LG, XL, 2XL, 3XL, 4XL, 5XL, 6XL
Lengths:	REG, LON
Material:	7oz. Flame-resistant cotton outer shell & 7oz. 100% flame-resistant cotton lining
Certs:	ATPV 24 cal/cm ² , HRC/CAT 2, NFPA 70E Compliant, UL Classified NFPA 2112

7oz. FR Utility Hoods

Style#:	PKHD7NY
Colors:	Navy [PKHD7NY]
Sizes:	One Size Fits All
Material:	7oz. Flame-resistant cotton outer shell & 7oz. 100% flame-resistant cotton lining
Certs:	ATPV 24 cal/cm ² , HRC/CAT 2, NFPA 70E Compliant, UL Classified NFPA 2112

Compatible with: **JUFR7NY**



 **New**
Windshield Technology



New windshield fabric provides an excellent wind and water barrier so the wearer stays warm and dry in the most inclement cold-weather conditions.



WATER REPELLING Two (2) water blocking barriers in one outer shell fabric.
Barrier#1-Water is repelled by the durable water repellent outer shell finish.
Barrier#2-Polyurethane (PU) laminate backing of the duck outer shell prevents water penetration through the fabric.



WIND BLOCKING
The PU film works as a wind barrier, preventing cold wind entering through the outer shell.



WICKING
The next-to-skin fabric is smooth, flame-resistant 100% Cotton with moisture management. PU film has sufficient air permeability which allows water vapor to escape.



WARMTH
Prevents body heat from escaping, creating a loft, and trapping air to increase insulation.



9oz. FR Insulated Jackets

Style#: JTFRWS9



Colors: Brown [JTFRWS9BR]
Gray [JTFRWS9GY]
Navy [JTFRWS9NY]
Red [JTFRWS9RE]



Sizes: SM, MED, LG, XL, 2XL,
3XL, 4XL, 5XL, 6XL



Lengths: REG, LON



Material: Shell: Windshield 9 oz. Flame-Resistant 100% Cotton PU Laminate Duck Outer Shell

Lining: 12 oz. quilted lining-46% Cotton/50% FR Non Woven Modacrylic/4% FR Polyester

Certs: ATPV 43.5 cal/cm², HRC/CAT 4, NFPA 70E Compliant, UL Classified NFPA 2112

FR WINTERWEAR

Men's



CAT
4



9oz. FR Insulated Chore Coats

Style#: JCFRWS9

Colors: Brown [JCFRWS9BR]
Gray [JCFRWS9GY]
Navy [JCFRWS9NY]
Red [JCFRWS9RE]

Sizes: SM, MED, LG, XL, 2XL,
3XL, 4XL, 5XL, 6XL

Lengths: REG, LON



Material: Shell: Windshield 9 oz. Flame-Resistant 100% Cotton PU Laminate Duck Outer Shell

Lining: 12 oz. quilted lining-46% Cotton/50% FR Non Woven Modacrylic/4% FR Polyester

Certs: ATPV 43.5 cal/cm², HRC/CAT 4, NFPA 70E Compliant, UL Classified NFPA 2112

Look, new features!



CAT
4



9oz. FR Insulated Parkas

Style#: PKFRWS9

Colors: Gray [PKFRWS9GY]
Navy [PKFRWS9NY]
Red [PKFRWS9RE]

Sizes: SM, MED, LG, XL, 2XL,
3XL, 4XL, 5XL, 6XL

Lengths: REG, LON



Material: Shell: Windshield 9 oz. Flame-Resistant 100% Cotton PU Laminate Duck Outer Shell

Lining: 14 oz. quilted lining-40% Cotton/57% FR Non Woven Modacrylic/3% FR Polyester

Certs: ATPV 40 cal/cm², HRC/CAT 4, NFPA 70E Compliant, UL Classified NFPA 2112

Bibs, Coveralls & Headwear

NEW & improved Fabric



9oz. FR Insulated Bibs

Style#:	BIFRWS9
Colors:	Brown [BIFRWS9BR], Gray [BIFRWS9GY], Navy [BIFRWS9NY], Red [BIFRWS9RE]
Sizes:	SM, MED, LG, XL, 2XL, 3XL, 4XL, 5XL, 6XL
Lengths:	REG, LON
Shell:	Windshield 9 oz. Flame-Resistant 100% Cotton PU Laminate Duck Outer Shell
Lining:	14 oz. quilted lining-40% Cotton/57% FR Non Woven Modacrylic/3% FR Polyester
Certs:	ATPV 40 cal/cm ² , HRC/CAT 4, NFPA 70E Compliant, UL Classified NFPA 2112

9oz. FR Insulated Coveralls

Style#:	CIFRWS9
Colors:	Brown [CIFRWS9BR], Gray [CIFRWS9GY], Navy [CIFRWS9NY], Red [CIFRWS9RE]
Sizes:	SM, MED, LG, XL, 2XL, 3XL, 4XL, 5XL, 6XL
Lengths:	REG, LON
Shell:	Windshield 9 oz. Flame-Resistant 100% Cotton PU Laminate Duck Outer Shell
Lining:	14 oz. quilted lining-40% Cotton/57% FR Non Woven Modacrylic/3% FR Polyester
Certs:	ATPV 40 cal/cm ² , HRC/CAT 4, NFPA 70E Compliant, UL Classified NFPA 2112



FR WINTERWEAR

Men's

NEW



PyroSafe
by antex

CAT
3



7oz. FR Reversible Knit Balaclava

Style#: BALFRD7

Colors: Navy/Gray [BALFRD7NG], Navy/Khaki [BALFRD7NK], Navy/Navy [BALFRD7NY]

Sizes: One Size Fits All

Material: 7oz. FR Rib Knit - 95% Cotton/5% Spandex

Certs: ATPV 33 cal/cm², HRC/CAT 3, NFPA 70E Compliant, UL Classified NFPA 2112



CAT
4



9oz. FR Insulated Parka Hood

Style#: PKHDWS

Colors: Gray [PKHDWSGY], Navy [PKHDWSNY], Red [PKHDWSRE]

Sizes: One Size Fits All

Shell: Windshield 9 oz. Flame-Resistant 100% Cotton PU Laminate Duck Outer Shell

Lining: 12 oz. quilted lining-46% Cotton/50% Non -Woven Modacrylic/4% Polyester

Certs: ATPV 43.5 cal/cm², HRC/CAT 4, NFPA 70E Compliant, NFPA 2112 Compliant

CAROLINA
PROTECT® FR®

Compatible with: PKFRWS9



CAT
4



9oz. FR Insulated Hood

Style#: HDWS

Colors: Brown [HDWSBR], Gray [HDWSGY], Navy [HDWSNY], Red [HDWSRE]

Sizes: One Size Fits All

Shell: Windshield 9 oz. Flame-Resistant 100% Cotton PU Laminate Duck Outer Shell

Lining: 14 oz. quilted lining-40% Cotton/57% FR Non Woven Modacrylic/3% FR Polyester

Certs: ATPV 43.5 cal/cm², HRC/CAT 4, NFPA 70E Compliant, NFPA 2112 Compliant

CAROLINA
PROTECT® FR®

Compatible with: CIFRWS9, JCFRWS9, JTFRWS9

Women's Flame-Resistant Workwear

LAPCO **FR**TM

Ladies Size Chart - Misses

- To find your shirt size, measure your bust and waist.
- Always use the larger measurement, between the bust and waist, to determine your size.
- **If your measurements fall between sizes, choose the larger size.**

UNIFORM SHIRTS - MISSES SIZING						
	SIZE	XS	SM	MED	LAR	XL
	BUST	32-34"	34-36"	36-38"	38-42"	42-44"
	WAIST	30-32"	32-34"	34-36"	36-40"	40-42"
	SLEEVE	30"	30½"	30¾"	31¼"	31¾"
BODY LENGTH	REG	27"	27¼"	27½"	28"	28⅞"
	LON	29"	29¼"	29½"	30"	30½"

JEANS & UNIFORM PANTS - MISSES SIZING									
SIZE	0	2	4	6	8	10	12	14	16
WAIST	29"	30"	31½"	33"	34"	35½"	37"	38½"	40½"
HIP	35½"	37"	38½"	39½"	41"	42½"	44"	46"	48"

AVAILABLE INSEAMS	
SHO	30"
REG	32"
TAL	34"

LAPCO **FR**TM

Ladies Size Chart – Women's

- To find your pants size, measure your waist and hip.
- Always use the larger measurement, between the waist and hip, to determine your size.
- **If your measurements fall between sizes, choose the larger size.**

UNIFORM SHIRTS - WOMEN'S SIZING						
	SIZE	2XL	3XL	4XL	5XL	6XL
	BUST	44-46"	46-48"	48-50"	50-52"	52-54"
	WAIST	42-44"	44-46"	46-48"	48-50"	50-52"
	SLEEVE	32½"	33"	33½"	34¼"	34¾"
BODY LENGTH	REG	29¼"	30"	30½"	31"	31½"
	LON	31¼"	32"	32½"	33"	33½"

JEANS & UNIFORM PANTS - WOMEN'S SIZING							
SIZE	18	20	22	24	26	28	30
WAIST	41-42"	43-44"	45-46"	47-48"	49-50"	51-52"	53-54"
HIP	48"	50"	52"	54"	56"	58"	60"

AVAILABLE INSEAMS	
SHO	30"
REG	32"
TAL	34"

Ladies Uniforms & Jeans



CAT
2

7oz. Ladies FR Uniform Shirts

Style#: L-SFRAC

Colors: Gray [L-SFRACGY]
Khaki [L-SFRACKH]
Navy [L-SFRACNY]

Sizes: SM, MED, LG, XL,
2XL, 3XL, 4XL, 5XL,
6XL

Lengths: SHO, REG, LON

 Westex
UltraSoft AC®



Material: 7oz. Advanced Comfort 88% Long Staple Cotton/ 12% Nylon Blend Twill with an UltraSoft Finish

Certs: ATPV 8.3 cal/cm², HRC/CAT 2, NFPA 70E Compliant, UL Classified ASTM F1506, UL Classified NFPA 2112



CAT
2

7oz. Ladies FR Uniform Pants

Style#: L-PFRAC

Colors: Gray [L-PFRACGY]
Khaki [L-PFRACKH]
Navy [L-PFRACNY]

Sizes: 0, 2, 4, 6, 8, 10, 12,
14, 16, 18, 20, 22, 24,
26

Lengths: SHO, REG, TAL

 Westex
UltraSoft AC®



Material: 7oz. Advanced Comfort 88% Long Staple Cotton/ 12% Nylon Blend Twill with an UltraSoft Finish

Certs: ATPV 8.3 cal/cm², HRC/CAT 2, NFPA 70E Compliant, UL Classified ASTM F1506, UL Classified NFPA 2112



CAT
2

10oz. Ladies FR Modern Jeans

Style#: L-PFRD10M

Colors: Washed Denim
[L-PFRD10M]

Sizes: 0, 2, 4, 6, 8, 10, 12,
14, 16, 18, 20, 22, 24,
26

Lengths: SHO, REG, TAL



Material: 10oz. 100% Flame-Resistant Cotton Denim

Certs: ATPV 15 cal/cm², HRC/CAT 2, NFA 70E Compliant, UL Classified ASTM F1506, UL Classified NFA 2112



CAT
2

10oz. Ladies FR Classic Jeans

Style#: L-PFRD10C

Colors: Washed Denim
[L-PFRD10C]

Sizes: 0, 2, 4, 6, 8, 10, 12,
14, 16, 18, 20, 22, 24,
26

Lengths: SHO, REG, TAL



Material: 10oz. 100% Flame-Resistant Cotton Denim

Certs: ATPV 15 cal/cm², HRC/CAT 2, NFA 70E Compliant, UL Classified ASTM F1506, UL Classified NFA 2112



Shirts Size Chart

- To find your shirt size, use your neck and sleeve measurements.
- If you are in between sizes, choose the larger size.
- **NOTE:** When taking your measurements, use a cloth tape measure, not a metal one.
- Measurements should be taken over standard undergarments.

ALPHA TO NUMERIC SHIRT SIZING					
		SLEEVE LENGTHS			
ALPHA SIZE	NECK SIZE	S (SHORT)	M (REG)	L (LONG)	XL (XLONG)
SM	14.5	31	32	33	34
	15	32	33	34	35
MED	15.5	32	33	34	35
	16	33	34	35	36
LAR	16.5	33	34	35	36
	17	34	35	36	37
XL	17.5	34	35	36	37
	18	34	35	36	37
2XL	19	35	36	37	38
3XL	20	35	36	37	38
4XL	22	36	37	38	39
5XL	23	36	37	38	39
6XL	24	36	37	38	39

**Stock sizes shown. Special order sizes may be available by request.*

Welding Cap Size Chart



- To find your welding cap size, measure the circumference of your head.

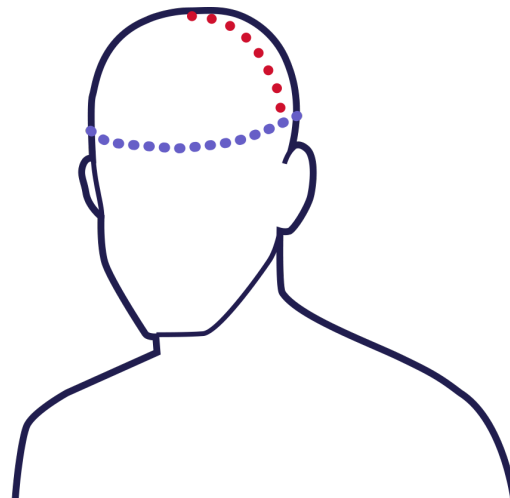
How to measure:

- Hold the end of the cloth tape measure to the middle of your forehead. If you are using a standard metallic tape measure, use a piece of string.
- Wrap the tape or string around your head until you return to the starting point. It should be above your ears, resting at the point you would like your hat to rest.
- Make sure the tape measure or string is snug around your head, but not too tight. It should be comfortable and just fitted enough to stay put.
- Jot down your measurement in inches. If you used string, measure the string against your tape measure.
- Use the size chart at right to determine which size will be your best fit. If you are between sizes, choose the larger size.

CAP SIZE	HEAD MEASUREMENT
6 ³ / ₄	21 ¹ / ₈ "
6 ⁷ / ₈	21 ¹ / ₂ "
7	21 ⁷ / ₈ "
7 ¹ / ₈	22 ¹ / ₄ "
7 ¹ / ₄	22 ⁵ / ₈ "
7 ³ / ₈	23"
7 ¹ / ₂	23 ¹ / ₂ "
7 ⁵ / ₈	23 ⁷ / ₈ "
7 ³ / ₄	24 ¹ / ₄ "
7 ⁷ / ₈	24 ⁵ / ₈ "
8	25"
CROWN HEIGHT	
4 PANEL CAPS-HIGH CROWN	7"
6 PANEL CAPS-LOW CROWN	6"

To measure for crown height :

- Measure from the crown of the head (highest peak) to the location where you like the bottom of the band.
- If you have an existing hat that fits fine, lay it down flat on its side. Measure the distance from the top of the crown to the bottom of the band.



Non-FR Welding Shirts



10oz. Heavy-Duty Welding Shirts

Style#: LS

Material: 10oz. 100% Cotton Gabardine Twill

Colors: Khaki [LS]

Sizes: 14 1/2, 15, 15 1/2, 16, 16 1/2, 17, 17 1/2, 18, 19, 20, 22, 23, 24

Lengths: S, M, L, XL



WHITE PEARL SNAPS!



10oz. Heavy-Duty Welding Shirts

Style#: DS

Material: 10oz. 100% Cotton Denim

Colors: Denim [DS]

Sizes: 14 1/2, 15, 15 1/2, 16, 16 1/2, 17, 17 1/2, 18, 19, 20, 22, 23, 24

Lengths: S, M, L, XL



WHITE PEARL SNAPS!



8.5oz. Mid-Weight Welding Shirts

Style#: 850

Material: 8.5oz. 100% Cotton Twill

Colors: Khaki [850]

Sizes: SM, MED, LG, XL, 2XL, 3XL, 4XL, 5XL, 6XL

Lengths: REG, LON



WHITE PEARL SNAPS!



Premium quality for welders since 1989.

LAPCO™ Leather Arm pads provide protection from heat and support the arm, they will not hinder arm movement, are insulated with high-quality foam, and tapered to provide protection with an ergonomic fit.

Leather Arm Pads

Style#: LAP-AL or LAP-AR

Material: Leather with heavy-duty hook & loop closure and heavy-duty elastic arm bands

- Options:**
- LAP-AL=LEFT ARM (RIGHT HANDED)
 - LAP-AR=RIGHT ARM (LEFT HANDED)

Sizes: One Size Fits All

7oz. FR 6-Panel Welding Caps

Style#: LAP-6CFR **LOW CROWN**

Material: 7oz. Flame-Resistant 100% Cotton Twill

Colors: Gray [LAP-6CFRGY]
Khaki [LAP-6CFRKH]
Navy [LAP-6CFRNY]

Sizes: 6 3/8, 6 1/2, 6 5/8, 6 3/4, 6 7/8, 7, 7 1/8, 7 1/4, 7 3/8, 7 1/2, 7 5/8, 7 3/4, 7 7/8, 8

Certs: ATPV 8.7 cal/cm², HRC/CAT 2, NFPA 70E Compliant



4-Panel Welding Caps

Style#: LAP-C **HIGH CROWN**

Material: Preshrunk 100% Cotton

Colors: Assorted [LAP-C]
Black [LAP-CB]
White [LAP-CW]

Sizes: 6 3/8, 6 1/2, 6 5/8, 6 3/4, 6 7/8, 7, 7 1/8, 7 1/4, 7 3/8, 7 1/2, 7 5/8, 7 3/4, 7 7/8, 8



Leathers & Welding Caps



6-Panel Welding Caps

Style#: LAP-6C **LOW CROWN**

Material: Preshrunk 100% Cotton

Colors: Assorted [LAP-6C]
 Black [LAP-6CB]
 White [LAP-6CW]
 Camo [LAP-CC]

Sizes: 6 ³/₈, 6 ¹/₂, 6 ⁵/₈, 6 ³/₄, 6 ⁷/₈, 7, 7 ¹/₈, 7 ¹/₄, 7 ³/₈, 7 ¹/₂, 7 ⁵/₈, 7 ³/₄, 7 ⁷/₈, 8

LAPCO™ welding caps are the welder's choice in high-quality welding caps.

- Pre-shrunk and fully reversible
- Sizes 6 ³/₈ – 8
- 100% cotton



One Size Fits All Welding Caps

Style#: LAP-CF **LOW CROWN**

Material: Preshrunk 100% Cotton

Colors: Assorted [LAP-CFA]
 Black [LAP-CFAB]
 White [LAP-CFAW]
 Camo [LAP-CFAC]

Sizes: One Size Fits All



Doo Rags

Style#: LAP-DR

Material: Preshrunk 100% Cotton

Colors: Assorted [LAP-DRA]
 Black [LAP-DRB]
 White [LAP-DRW]
 Camo [LAP-DRC]

Sizes: One Size Fits All



5' Heavy-Duty Industrial Umbrellas

Style#:	LAP-UM5V
Material:	18 oz. Heavy-Duty Vinyl
Colors:	Blue [LAP-UM5VB], Red [LAP-UM5VR], Yellow [LAP-UM5VY]
Sizes:	5'

7' Heavy-Duty Industrial Umbrellas

Style#:	LAP-UM7V
Material:	18 oz. Heavy-Duty Vinyl
Colors:	Blue [LAP-UM7VBX], Red [LAP-UM7VRX], Yellow [LAP-UM7VYX]
Sizes:	7'



7' Heavy-Duty Industrial Camo Canvas Umbrellas

Style#:	LAP-UM7ACC
Material:	15 oz. Heavy-Duty Acrylic Coated Canvas
Colors:	True Timber Camo [LAP-UM7ACC]
Sizes:	7'



7' Heavy-Duty FR Industrial Umbrellas

Style#:	LAP-UM7FRO
Material:	15oz. FR Heavy-Duty Acrylic Coated Canvas
Certs:	Fabric meets: CSFM-Title 19, CPAI-84 (Section 6), FMVSS-302, NFPA 701 (Test Method 2)
Colors:	FR Orange [LAP-UM7FRO]
Sizes:	7'



Heavy-Duty Umbrella Carrying Case

Style#:	LAP-UMBCASE
----------------	-------------

These black, heavy-duty plastic umbrella carrying cases will keep your umbrella safe and easy to transport.

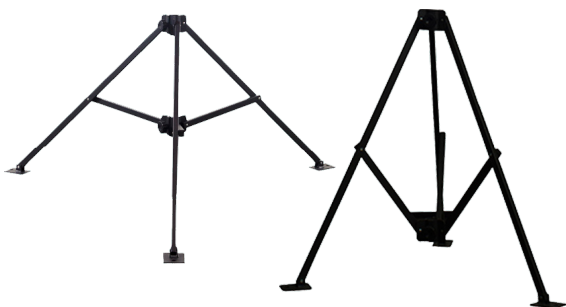
- 60" Long x 5.5" Diameter.
- Sturdy snap-on/off end caps.
- Fits 5' or 7' LAPCO™ Umbrellas.

Heavy-Duty Umbrella Stands

Style#:	LAP-UMST
----------------	----------

Adjustable heavy-duty tripod umbrella stand fits all LAPCO Umbrellas.

- Each leg is 38.75" long
- Stand is 28" high when fully extended
- Bottoms of legs are approx. 52" apart when fully extended
- Black powder coated aluminum with black plastic end caps
- Fits poles up to 1.5" in diameter
- Each leg has a foot plate with an anchor hole



Product & Service Information

To find **Detailed Laundering Instructions**
scan the QR code or visit the product info page at www.lapco.com.



Scan me to find

**Laundering Instructions, FR Clothing Information,
Size Charts, and more!**

- **Warranty**
- **Customization Services**
- **Customization Order Processing**
- **Reflective Trim**
- **Industry Terms Quick Reference**
- **Return, Refund, & Exchange Policy**
- **Marking & Labeling**
- **Laundering & Retirement**

LAPCO FR™

Manufacturer's Warranty

LAPCO Manufacturing Inc. ("LAPCO") provides warranty against defects in manufacturing of the products only. LAPCO will repair or replace any garment that has a manufacturing defect. LAPCO will determine whether a returned garment will be repaired or replaced.

This warranty does not cover:

- Normal wear and tear (including zippers and other hardware)
- Misuse
- Neglect
- Obvious abuse of the garment
- Garments that have had changes or alterations that significantly vary from the original design

No warranty is implied or intended as to the use, handling, or results and performance to be obtained. LAPCO does not guarantee the suitability of products for specific uses or purposes.

LAPCO's obligation is to ensure our flame-resistant apparel will meet the requirements of the standards specified on the garment's labels. When laundered correctly, the flame-resistance of LAPCO FR™ apparel is guaranteed for the life of the garment.

LAPCO endeavors to ensure that all orders are shipped correctly. In the event an error should occur due to LAPCO, the order will be corrected at no extra cost to the customer. Please call or email customer service to request a return authorization (RA) number.

Please contact our customer service team with any warranty questions:

Phone: 800-385-5380

Email: info@lapco.com

Hours of Ops

Weekdays - 8:00 am to 4:30 pm Central

Saturday & Sunday - Closed



LAPCO **FR**™

Customization Services

Custom Embroidered Logos & Designs

Begin with High-Quality Digitizing

We offer in-house digitizing to ensure the best quality decoration for your uniforms.

LOGO SIZES: Logos placed on shirts or jackets in a left chest position should not exceed 3.5" w x 2.5" h in size. Most logos are sized to fit within 3" to 4" wide. Logos are placed above pockets. Embroidery for the back of apparel items is sized to fit within an area up to 8.75" wide.

LOGO LIMITATIONS: Embroidery is NOT printing. If your artwork includes shadows, gradients or shading, we will have to discuss how to adapt the design to embroidery capabilities. We have some tricks, but there are limits on what can be duplicated with needle and thread. We cannot duplicate gradients within small individual letters, numbers, or other small objects. Gradient effects can be reproduced only within larger objects or shapes. Thread layering and over stitching are used to produce a gradient look. Although this achieves a similar effect, it adds considerable stitching to the digitized design.

LOGO TEXT AND LETTERING: Letters that are too small and certain font styles do not embroider well. Consider the difference in height between capital letters and lower case letters. Avoid small lettering using fonts with serifs such as TIMES NEW ROMAN, BODONI, BOOK ANTIQUA or COPPERPLATE. These fonts are very difficult to recreate with needle and thread especially when they are small. Letter sizes must be at least 1/4" high or FONT SIZE of 24 as a MINIMUM at the final embroidered size to embroider legibly.

MATCHING FONTS: There are corporate logos and designs which use custom or unique fonts that we may not have. When sending a vector art file (Ai, EPS, PS, PDF, CDR or CMX), convert the text to CURVES, PATHS, or OUTLINES to reduce the possibility of font conflicts. Alternatively, send us your custom TTF font file IF you want us to EDIT your text or if you want us to ADD matching text. Without your unique font file, we may not be able to recreate the text exactly.

LOGO FORMAT: Vector art works best for embroidery. Almost all corporate logos, developed by professionals are in vector art format. Vectors are the standard in graphic design, printing and publishing. There are many vector file formats, but these are the most popular: Ai, EPS, CDR, and some PDF files. If you are sending a bitmap/ raster image, please make sure it is a LARGE, high-quality image. A resolution of 300 dpi is preferred. Bitmap files include BMP, GIF, JPEG, TIFF and many more.



First Name
Last Name

LAPCO FR™

Customization Services

Customization with Patches and Emblems

Patches and emblems serve multiple purposes when used to customize uniforms. They promote your company identity, they unite all members of your team under a common symbol, and they provide increased security in the workplace and in the field.

STANDARD PATCHES: We offer a variety of standard patches that include country and state flags as well as name patches and safety patches. Name patches are available with a variety of border colors in addition to standard white or black borders to match your needs. You can choose from Block or Script fonts for names. Name patches come in two standard sizes: 3.5" w x 1.5" h for single names and 4" w x 2" h for full names or name and title.

CUSTOM PATCHES: We offer custom patch designs with your logo, artwork, or message. A variety of options are available for custom logo patch designs. All patches can be sewn on, heat sealed, or made removable and reusable with Velcro attachment options.

Custom Heat Transfers

CUSTOM HEAT TRANSFERS: We offer custom heat transfers with your graphic artwork or logo. Flame-resistant or Non-FR transfers are available. (Note: Cannot be applied to the back of Deluxe Coveralls.)

Custom Reflective Taping

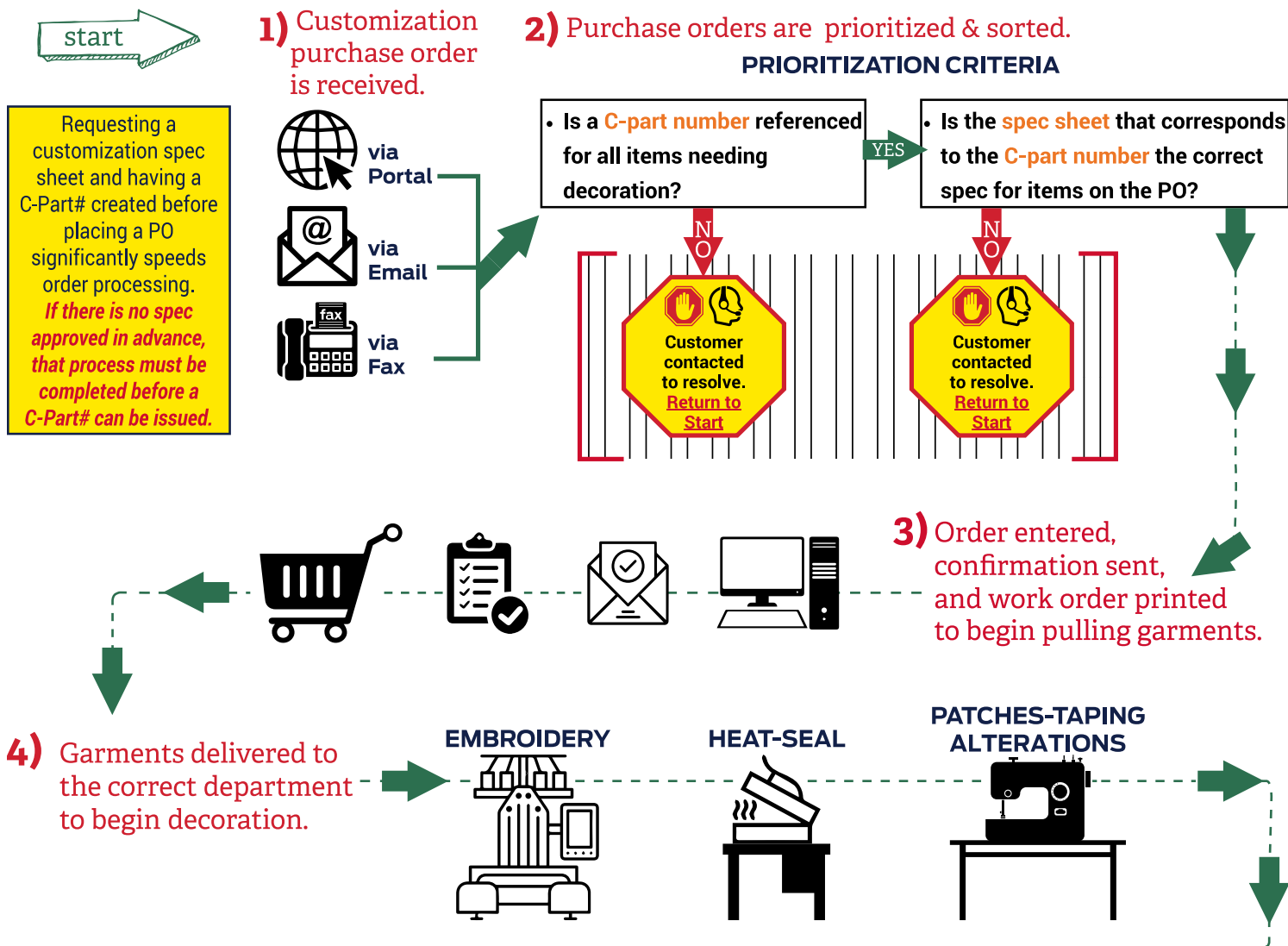
CUSTOM REFLECTIVE TAPE: We offer custom reflective taping for your coveralls, shirts, pants and winterwear. We can help you design a configuration to meet your needs (see page 51).



LAPCO FR™

Customization Order Processing Workflow

Why is it important to include the correct C-Part# on your Order?



C-Part#s are important because:

Purchase orders will NOT be processed without the correct C-Part# referenced.

You will be contacted to provide a c-part# or start the approval sheet process and your order will be moved to the back of the "line" behind orders that meet all of the prioritization criteria for customization order processing.

Customization part numbers are important to ensure the correct customization is applied to the correct garments. C-Part#s and Approval "Spec" Sheets are used to protect YOU by giving you a tool to solicit approval of the custom design from your customer BEFORE decoration is applied to a garment. *Once a garment has been customized with embroidery, reflective trim, heat transfer, or garment alterations, it is non-returnable with the only exception being an error made on our part.*

COMMONLY REQUESTED *Reflective Trim Configurations*

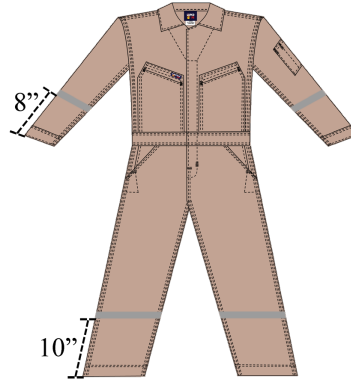
We offer custom configurations to meet all of your reflective trim needs.

Trim styles available : 1" Silver | 2" Silver | 2" Yellow | 2" Yellow/Silver/Yellow | 2" Orange/Silver/Orange

Configuration 1 | Arms & Legs



CVFRD7KH with Configuration 1 shown in 1" Silver Reflective Trim



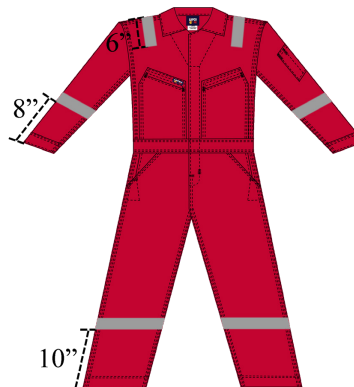
These are just a few examples of the most often requested configurations.

Configuration 2 | Arms, Legs & Shoulders



CVFRD7RE with Configuration 2 shown in 2" Silver Reflective Trim

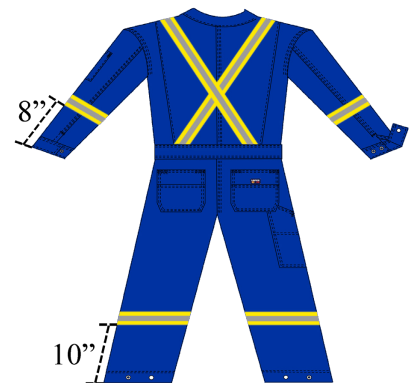
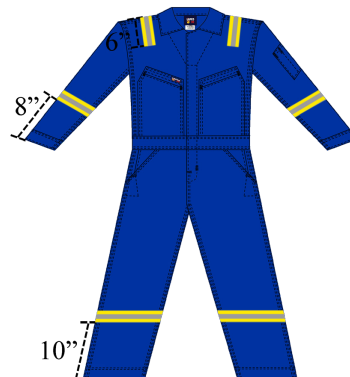
6" down front & back of shoulders



Contact customization@lapco.com for your customized design.

Configuration 3 | Arms, Legs, Shoulders, X on Back

CVFRD7RO with Configuration 3 shown in 2" Yellow/Silver/Yellow (YSY) Reflective Trim



LAPCO FR Industry Terms Quick Reference

ANSI: acronym for the American National Standards Institute.

ANSI/ISEA 107-2015: American National Standard for High-Visibility Safety Apparel and Accessories

Aramid: Class of synthetic fibers with general characteristics that include a high melting point, a high strength to weight ratio, and low elongation at break.

Arc Blast: is the supersonic shockwave produced when the uncontrolled arc vaporizes the metal conductors. It is also described as an explosive release of molten material from equipment caused by high-amperage arcs.

Arc Flash: An arc flash (also called a flashover) is the light and heat produced as part of an arc fault, a type of electrical explosion or discharge that results from a low-impedance connection through air to ground or another voltage phase in an electrical system.

ASTM F1506: Standard Performance Specification for Flame Resistant and Arc Rated Textile Materials for Wearing Apparel for Use by Electrical Workers Exposed to Momentary Electric Arc and Related Thermal Hazards.

ASTM: shortened from ASTM International, formerly known as the American Society for Testing and Materials.

ATPV: (Arc Thermal Performance Value) is expressed in cal/cm² and represents the thermal exposure from an electric arc on a material that is predicted to cause a second-degree burn in human tissue.

Breakopen: Breakopen is the formation of holes in the fabric during arc rating testing. This is the point of failure of FR protective garments.

CAN/CGSB 155.20-2000: Standard on Workwear for Protection Against Hydrocarbon Flash Fire.

CEC: Canadian Electrical Code. This is a standard by the CSA pertaining to the installation and maintenance of electrical equipment in Canada.

CGSB: acronym for the Canadian General Standards Board.

Char Length: A measurement used to assess FR clothing performance based on the amount of damaged fabric when a Vertical Flame Test (ASTM D6413) is performed.

Combustible Dust: Combustible dust is defined as a solid material composed of distinct particles or pieces, regardless of size, shape, or chemical composition, which presents a fire or deflagration hazard when suspended in air or some other oxidizing medium over a range of concentrations.

CSA: Canadian Standards Association

EBT: The energy break-open threshold refers to the highest amount of electrical energy that a given material can withstand before breaking open. It is a measurement of a material's ability to protect workers against arc flashes and other discharges of energy, and it is defined as the point at which the material exhibits a 50% probability of break-open.

Elastane: See spandex

Flame Resistant: The characteristic of a fabric to resist ignition and to self-extinguish if ignited.

Flame Retardant: A chemical substance used to impart flame resistance.

Flash Fire: A flash fire is defined by CGSB 155.20-2000 and NFPA 2113 as: "A rapidly moving flame front which can be a combustion explosion. Flash fire may occur in an environment where fuel and air become mixed in adequate concentrations to combust...flash fire has a heat flux of approximately 84 kW/m² for relatively short periods of time, typically less than 3 seconds."

Gabardine: Gabardine is a tough, tightly woven, fairly thick fabric used to make clothing.

Heat Stress: Occupational heat stress is the net load to which a worker is exposed from the combined contributions of metabolic heat, environmental factors, and clothing worn which results in an increase in heat storage in the body.

Home Laundering: Home laundering refers to the care and cleaning of flame-resistant workwear in the wearer's home.

HRC/CAT: (Hazard Risk Category) is the level of risk exposure of a specific job or task.

Industrial Laundering: Industrial laundering refers to laundering activities on a large scale. Large institutions (restaurants, hotels, hospitals, industries) that usually require a constant flow of clean linen, workwear or uniforms, can employ the services of an industrial laundry.

Inherent Flame-Resistant Fabrics: Flame resistance is a built in characteristic of the fiber, no treatment is needed. Fibers are engineered to be flame-resistant before being woven into fabric.

ISEA: International Safety Equipment Association

ISO: (International Organization for Standardization) ISO is an independent, non-governmental international organization with a membership of 164 national standards bodies.

Kevlar®: Poly-paraphenylene terephthalamide, better known as Kevlar®, is the registered name given to this specially blended para-aramid synthetic fiber that is produced by DuPont™. Kevlar is strong but lightweight with an incredible tensile strength to weight ratio. It can withstand temperatures well above 850°F. One weakness of Kevlar is its susceptibility to UV degradation and discoloration.

Low Visibility: Visibility means 1. the state or fact of being visible. 2. the relative ability to be seen under given conditions of distance, light, atmosphere, etc.: low visibility due to fog. Therefore, low visibility hazards can be any situation that lowers or impedes visibility or any environment where visibility is reduced.

Lyocell: A type of rayon consisting of cellulose fibre made from dissolving wood pulp using a dry jet-wet spinning procedure. Also going by the name Tencel, the attribute which places this textile above its competition is its environmentally friendly production. This material carries the Oeko-tex 100 certification which means that it contains no harmful substances whatsoever. Lyocell also has anti-bacterial properties.

LAPCO FR Industry Terms Quick Reference

Meta-Aramid: Meta-Aramids are fibers that are highly resistant to temperature, chemical degradation, and abrasion. A meta-aramid fiber is usually manufactured by spinning in a chemical solution, known as wet spinning. The result is a semi-crystalline fiber with its molecular chain partially oriented along the axis of the fiber. M-aramid fibers generally have a Tenacity of about 5.6g/den, which can compare to Mid-Tenacity nylon and polyester fibers. These fibers are unique in their ability to withstand tensile stress during exposure to flames and temperatures up to 400 deg. C.

Modacrylic: Modacrylic is an inherently flame-resistant fiber that does not combust, due to the polymer composition. Modacrylic is a synthetic copolymer. Modacrylics are soft, strong, resilient and dimensionally stable. They can be easily dyed, show good press and shape retention, and are quick to dry. They have outstanding resistance to chemicals and solvents, are not attacked by moths or mildew, and are nonallergenic. The material is highly flame retardant and is usually characterized by its creamy white color before dyes are applied.

Natural Fibers: Fibers found in or created by nature such as wool (from animals) and cotton (from plants) that can be spun into filament, thread or rope and further be woven, knitted, matted or bound.

NEC: National Electric Code sets the foundation for electrical safety in residential, commercial, and industrial occupancies in the USA.

NFPA: acronym for the National Fire Protection Association.

NFPA 2112: Standard for Flame-resistant Clothing for Protection of Industrial Personnel Against Short duration Thermal Exposures from Fire.

NFPA 2113: Standard on Selection, Care, Use, and Maintenance of Flame-Resistant Garments for Protection of Industrial Personnel Against Flash Fire.

NFPA 70E: Standard for Electrical Safety in the Workplace.

Nomex®: Nomex® is the brand name for a heat- and flame-resistant textile made by the DuPont™ chemical company. Technically, it's called a synthetic aromatic polyamide polymer (and, in the original Nomex patent, it's referred to as a "polycarbonamide")

OEKO-TEX®: Standards organization and accreditation system which evaluates textiles from fibre to finished product. OEKO-TEX® consists of 18 independent research and test institutes.

OSHA: acronym for the Occupational Safety and Health Administration, of the US Department of Labor.

OSHA 1910.132: Establishes general requirements and regulations with regards to personal protective clothing, including a hazard assessment to be performed and determine appropriate levels of protection

Para-Aramid: Para-aramids (such as Kevlar® and lower cost alternatives) display high tensile strength (the maximum stress that a material can withstand) and modulus behavior (the tendency of a material to deform when force is applied). These fibers are created by the dry-jet, wet spinning method resulting in a fiber which consists of fully extended liquid crystal chains formed along the fiber axis with a high degree of crystallinity which increases the fiber's strength. Para-aramid fibers can be manufactured with tenacity around 23g/den and elongation at break ~3.5%.

PPE: (Personal Protective Equipment) is equipment worn to minimize exposure to a variety of hazards.

Primary Protective Clothing: Clothing designed for activities where significant exposure to molten substance splash, radiant heat, or flame is likely to occur.

Secondary Protective Clothing: Protective clothing designed for continuous wear in designated locations where intermittent exposure is possible.

Self-Extinguishing: The ability of a material to cease burning once the source of the flame has been removed.

Spandex: a synthetic fabric that is prized for its elasticity. Contrary to popular belief, the term "spandex" is not a brand name, and this term is used to generally refer to polyether-polyurea copolymer fabrics that have been made with a variety of production processes. The terms spandex, Lycra, and elastane are synonymous. The name "spandex" is an anagram of the word "expands".

Synthetic Fiber: Artificial, human-made fibers created by chemical synthesis.

Tencel: See Lyocell

TPP: A fabric's Thermal Protective Performance is determined by the amount of heat it takes to pass through the fabric and cause a second-degree burn.

Treated Flame-Resistant Fabrics: the flame-resistant characteristic is achieved through special treatments applied to the fiber or fabric. Fabric is engineered to be flame-resistant after it is woven.

Twaron®: Twaron is a para-aramid. It is a heat-resistant and strong synthetic fibre.

UL - Underwriter's Laboratories: UL is a third-party organization that offers certification for FR garments that meet or exceed key standards, such as NFPA 2112.

VCE (Vapor Cloud Explosion): Vapor Cloud Explosion is an explosion that results from the ignition of a cloud of flammable vapor, gas, or mist. The flame accelerates at such a high velocity that it produces a significant amount of overpressure.

Vertical Flame Test: Also known as ASTM D6413, this is a standard test method for measuring the flame resistance of textiles based on after-flame time, after-glow time and char length.

Waterproof: impervious to water.

Water-repellent: not easily penetrated by water, especially as a result of being treated for such a purpose with a surface coating.

Water-resistant: able to resist the penetration of water to some degree but not entirely.

LAPCO FR *Return, Refund & Exchange Policy*

Your item must be in its original unused condition to be returned unless there is a manufacturer defect.

Return Exceptions

Merchandise that has been worn, used, or altered in any way will not be accepted for return or exchange.

Restocking Fee

Items may be subject to a 10% restocking fee. When applicable, the restocking fee will be deducted from your refund. We do not refund original shipping and handling.

Exchanges

If your clothing item is in like-new condition, you may exchange your clothing item for a different size or color. You will not be subject to a restocking fee in this case.

How to return an item

1. Please email sales@lapco.com to request a return and we will assign you a return authorization number. Include your order number and reason for return in this email for faster service.
2. Mail your item to:
LAPCO Manufacturing, Inc.
Attn: Returns Department
98 Glenwood Street
Morgan City, LA 70380
3. Include your return authorization number on or in your package.

Marking & Labeling

DO NOT MARK ON, DRAW OVER, REMOVE, OR REPLACE THE ORIGINAL LABELS INCLUDED ON LAPCO FR™ APPAREL.

- LAPCO FR™ apparel products are labeled in accordance with the requirements of the protective clothing standards of which they are designed to comply.
- Removing, marking on, drawing over, replacing, or altering these labels will void the manufacturer's warranty and compliance with these standards' labeling requirements.
- Do not mark FR garments by affixing items that may compromise the protective properties of the garments. Use only a laundry marking pen on the interior of the garment, if needed.

Relabeling any product manufactured by LAPCO Manufacturing, Inc., or using LAPCO FR labels in any way that is intended to mislead or counterfeit is expressly forbidden.

How important is the proper cleaning of FR workwear?

Proper laundering and maintenance of any flame-resistant garment is essential to remove potentially hazardous soils and avoid a build up of materials that could decrease the FR performance of your workwear. This includes flammable soils and greases as well as other contaminants that will act as accelerants in a fire hazard situation.

Though the garment's care label recommendations and other published instructions should take precedence, the following are all useful general references for care and maintenance of flame resistant and thermal protective clothing.

- **ASTM F1449 - 08(2015)** Guide for Industrial Laundering of Flame, Thermal, and Arc Resistant Clothing
- **ASTM F2757 - 09(2016)** Standard Guide for Home Laundering Care and Maintenance of Flame, Thermal and Arc Resistant Clothing
- **NFPA 2113** Standard on Selection, Care, Use, and Maintenance of Flame-Resistant Garments for Protection of Industrial Personnel Against Short-Duration Thermal Exposures

IMPORTANT INFO

Garment Retirement

How to determine when a flame-resistant garment should be removed from service.

These visually identifiable issues may reduce the effectiveness of FR clothing and are basis for garment retirement.

- Worn or thin spots, holes, excessive wear or abrasion spots on the garment.
- Evidence of cuts, rips, tears, open seams, or broken closures.
- Changes or alterations made to a garment that significantly varies from the original design.
- The FR clothing does not fit the wearer or is ill-fitting.
- **Soiled Beyond Salvage** - clothing soiled by chemicals or substances that present a flammability hazard, such as solvents, solids, oils, and other accelerants that cannot be properly removed by cleaning. Chemical odors that remain after appropriate laundering can be an indicator of this type of issue.



LAPCO **FR**

2020 Product Catalog



Flame-Resistant Workwear

PREMIUM SINCE 1989
WORKWEAR