



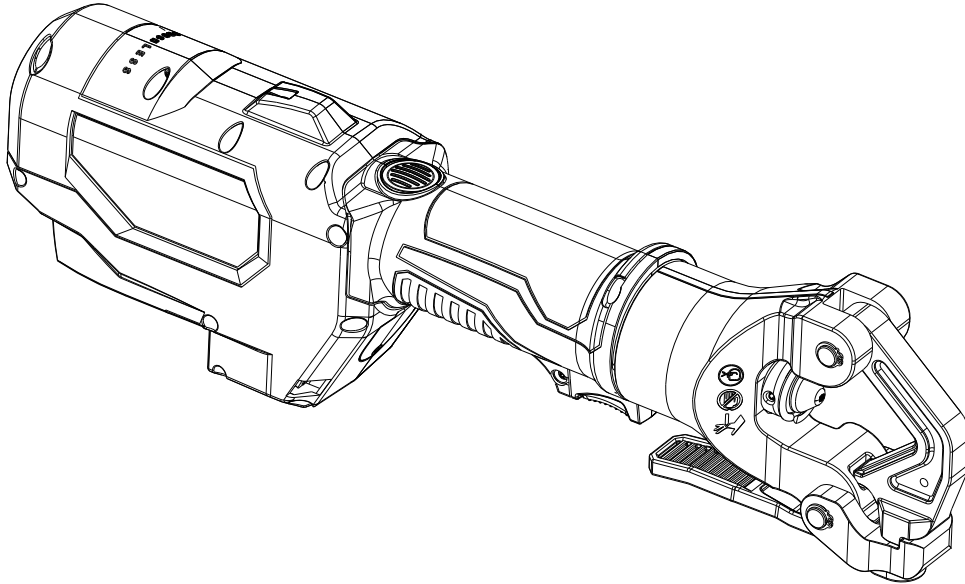
SERVICE PARTS LIST

BULLETIN NO.
54-00-2877

SPECIFY CATALOG NO. AND SERIAL NO. WHEN ORDERING PARTS		REVISED BULLETIN	DATE
M18™ ONE-KEY™ FORCELOGIC™ Dieless Crimper			Feb. 2022
CATALOG NUMBER	2877-20	SERIAL NUMBER	K16A
WIRING INSTRUCTION			

SERVICE PARTS EXPLODED VIEW PAGE 2, 3

LUBRICATION INSTRUCTIONS PAGE 4



Due to the combination of hydraulics and electronics in this tool, service can only be performed at Milwaukee Authorized Hydraulic Repair Centers:

MILWAUKEE TOOL Central Repair

1401 Sycamore Avenue • Greenwood, MS 38930-7277

Please send your tool directly to this location for service.

Or

Via e-Service at: www.milwaukeetool.com/e-service

questions, please call 1.800.SAWDUST (1.800.729.3878)

Or

Visit www.milwaukeetool.com to find your closest Milwaukee authorized Hydraulic repair center

Or

Return it to a MILWAUKEE *factory* Service Center location, freight prepaid and insured. A copy of the proof of purchase should be included with the return product.

If you have questions please contact Milwaukee Product Service at:

Product Technical Support via phone at: 262.783.8642

Or

Via email at: METProductSupport@milwaukeetool.com

Disassembly is not recommended and could void the warranty.

SERVICE PARTS EXPLODED VIEW

EXAMPLE:
 Component Parts (Small #)
 Are Included When Ordering
 The Assembly (Large #).

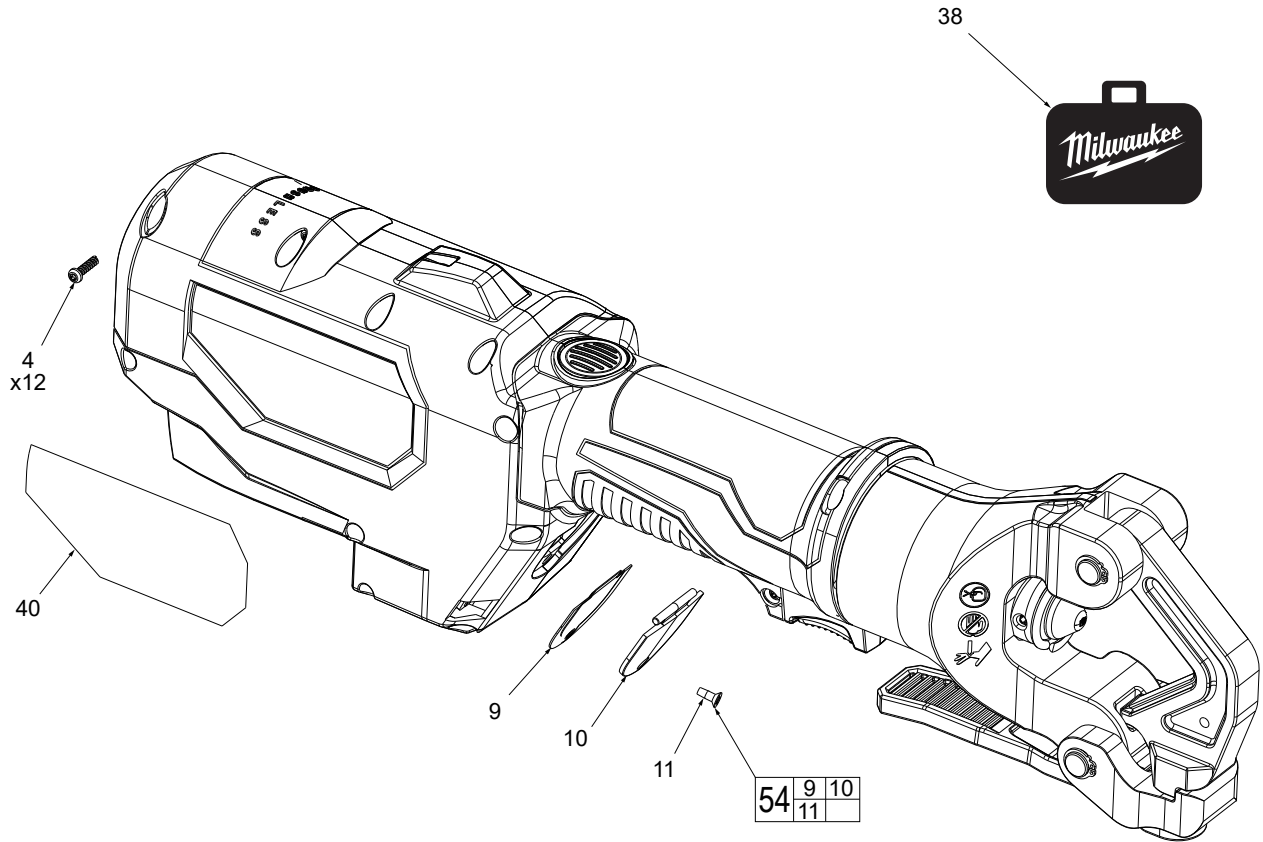


FIG.	PART NO.	DESCRIPTION OF PART	NO. REQ.
4	06-82-7225	4-20 x 1/2" Pan Hd. Plast. T-10 Screw	(12)
9	-----	Rubber Anti Static Seal	(1)
10	-----	Coin Cell Door	(1)
11	05-78-0088	M3 x 8mm Flat Hd. ST Phillips Screw	(1)
38	42-55-0038	Blow Molded Carrying Case	(1)
40	12-20-0162	Service Nameplate	(1)
54	42-92-0091	Coin Cell Door Kit	(1)

SERVICE PARTS EXPLODED VIEW CONT.

EXAMPLE:
 Component Parts (Small #)
 Are Included When Ordering
 The Assembly (Large #).

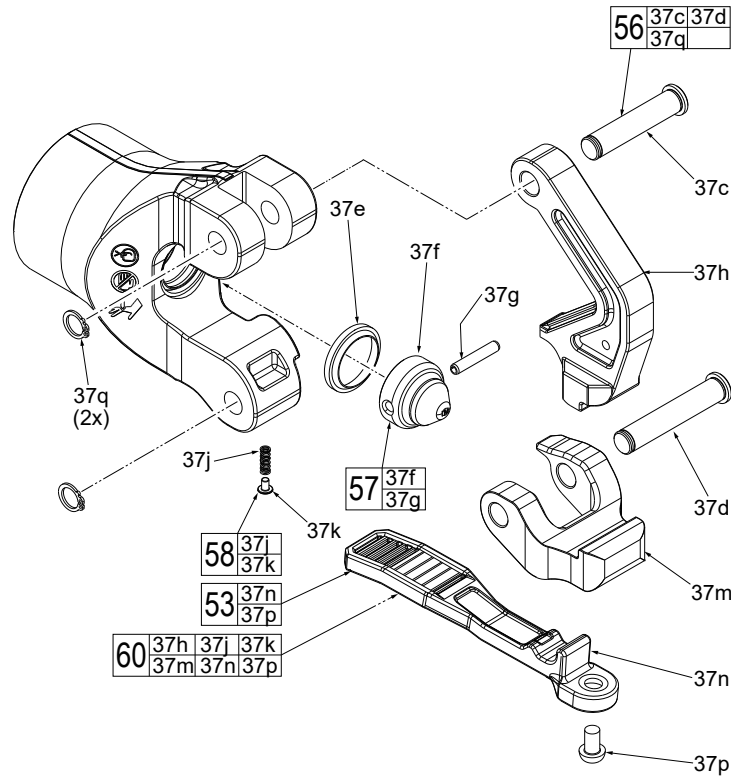


FIG.	PART NO.	DESCRIPTION OF PART	NO. REQ.
37c	-----	Short Pin	(1)
37d	-----	Long Pin	(1)
37e	-----	Wiper Seal	(1)
37f	-----	Round Indenter	(1)
37g	-----	Slotted Spring Pin	(1)
37h	-----	Indenter Die	(1)
37j	-----	Spring	(1)
37k	-----	Spring Guide Pin	(1)
37m	-----	Latch	(1)
37n	-----	Long Lever	(1)
37p	-----	M6 x 10mm Pan Hd. T-30 Machine Scr.	(1)
37q	-----	Retaining Ring	(2)
53	44-10-0027	Lever Assembly	(1)
55	43-64-0016	Single Head Assembly	(1)
56	14-46-1232	Snap Ring/Pin Service Kit	(1)
57	14-46-0098	Round Indenter Assembly	(1)
58	14-46-9092	Spring and Guide Pin Kit	(1)
60	43-64-0217	Lever/Indenter/Latch Kit	(1)

LUBRICATION INSTRUCTIONS

LUBRICATION:

- = Type S2 Grease (7 oz. tube), 49-08-5265
- = Type S2-80 White Lithium Grease, 49-08-0145
- = 243 Blue Loctite, 44-22-0095
- = Loctite 51007 Copper LB 8008 C5-A,
Anti-Seize Lubricant (1 lb. can), 44-22-0035

