



SERVICE PARTS LIST

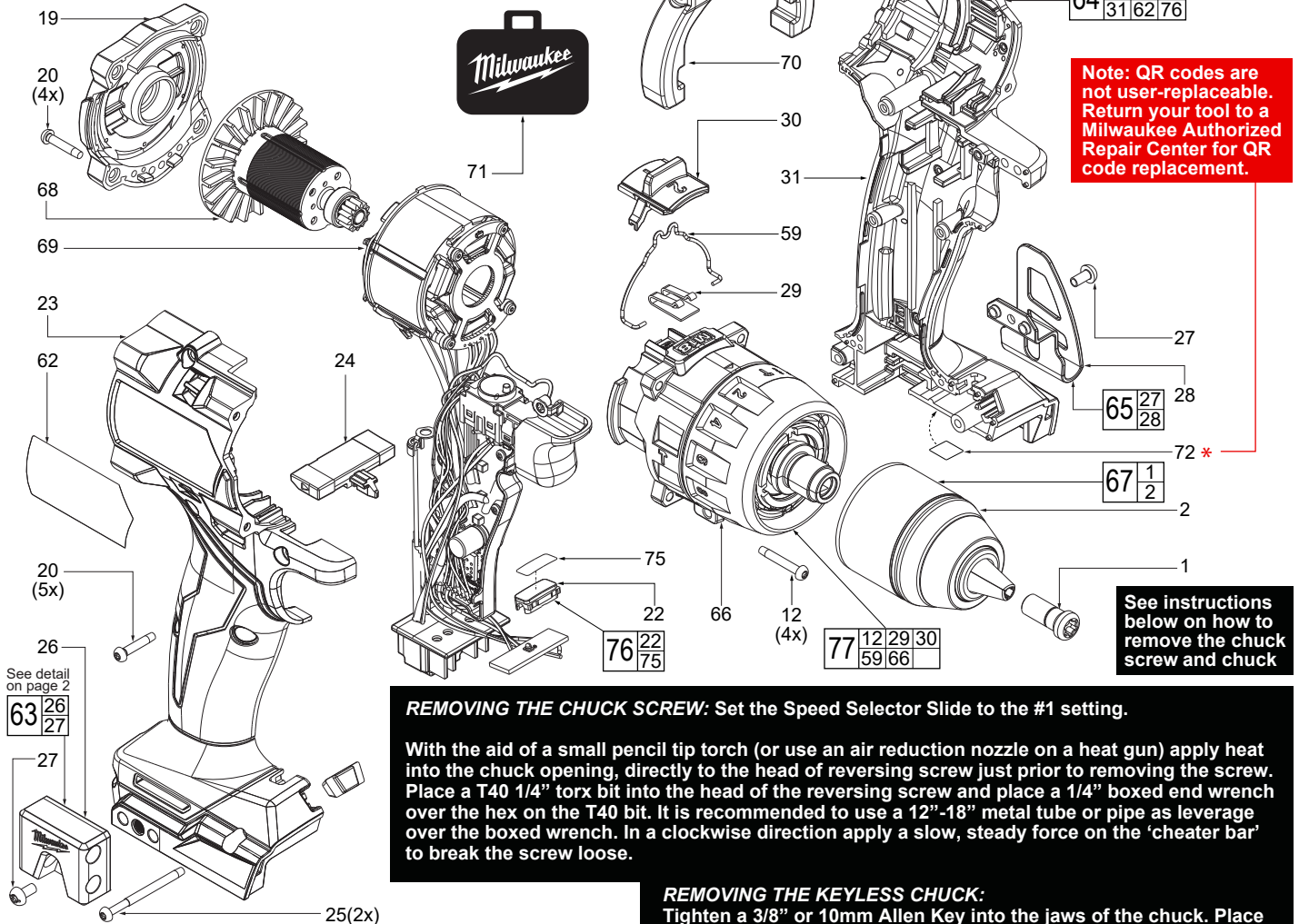
BULLETIN NO.
54-24-2990

| | | | |
|--|---------|---|-----------|
| SPECIFY CATALOG NO. AND SERIAL NO. WHEN ORDERING PARTS | | REVISED BULLETIN | DATE |
| M18™ FUEL™ Brushless Hammer-Drill | | | Nov. 2023 |
| CATALOG NO. | 2904-20 | STARTING SERIAL NO. | M64A |
| | | WIRING INSTRUCTION SEE PAGE 2 | |

| FIG. | PART NO. | DESCRIPTION OF PART | NO. REQ. |
|------|------------|---|----------|
| 1 | 05-88-0019 | M8.0 x 1 LH T-40 Chuck Screw | (1) |
| 2 | ----- | 1/2" Keyless Chuck | (1) |
| 12 | 06-82-7337 | M4 x 20mm Pan Hd. ST T-10 w/Washer Scr. | (4) |
| 19 | 42-92-7012 | Back Cap | (1) |
| 20 | 06-82-6351 | M3 x 16mm Pan Hd. ST T-10 Screw | (9) |
| 22 | ----- | Lens | (1) |
| 23 | ----- | Right Housing Halve - Cover | (1) |
| 24 | 42-42-7003 | Forward/Reverse Shuttle | (1) |
| 25 | 06-82-2367 | M3 x 38mm Pan Hd. ST T-10 Screw | (2) |
| 26 | ----- | Bit Holder | (1) |
| 27 | 06-82-2500 | #6-32 x 7mm Pan Hd. Machine Screw | (2) |
| 28 | ----- | Belt Clip | (1) |
| 29 | 44-10-0160 | Detent Spring | (1) |
| 30 | 45-24-2670 | Speed Selector | (1) |
| 31 | ----- | Left Housing Halve - Support | (1) |
| 59 | 44-10-4020 | Shift Spring | (1) |

EXAMPLE:
00 0 Component Parts (Small #) Are Included
When Ordering The Assembly (Large #).

See page 3 for fastener tightening procedure and torque specifications.



Note: QR codes are not user-replaceable. Return your tool to a Milwaukee Authorized Repair Center for QR code replacement.

See instructions below on how to remove the chuck screw and chuck

REMOVING THE CHUCK SCREW: Set the Speed Selector Slide to the #1 setting.

With the aid of a small pencil tip torch (or use an air reduction nozzle on a heat gun) apply heat into the chuck opening, directly to the head of reversing screw just prior to removing the screw. Place a T40 1/4" torx bit into the head of the reversing screw and place a 1/4" boxed end wrench over the hex on the T40 bit. It is recommended to use a 12"-18" metal tube or pipe as leverage over the boxed wrench. In a clockwise direction apply a slow, steady force on the 'cheater bar' to break the screw loose.

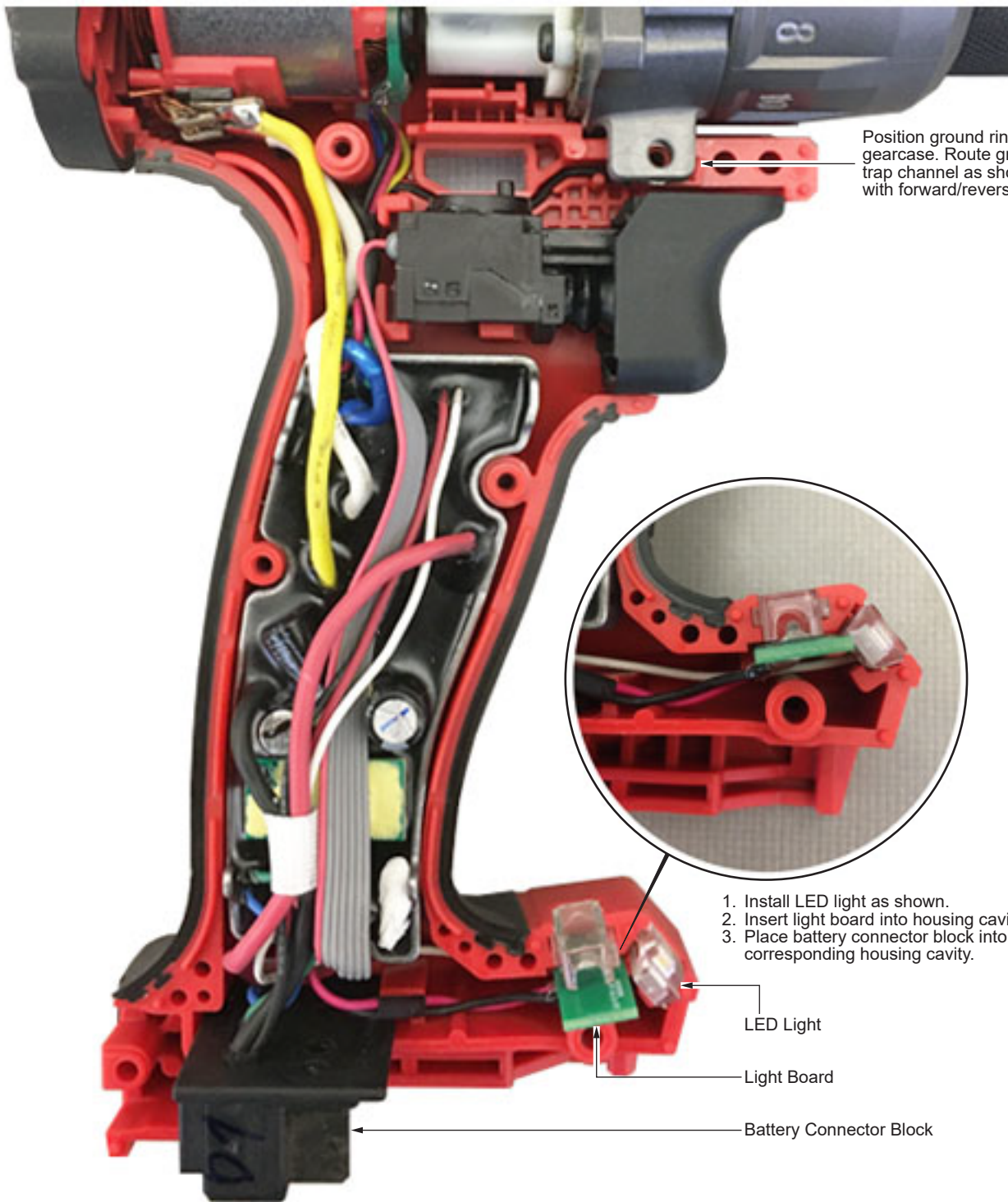
REMOVING THE KEYLESS CHUCK:

Tighten a 3/8" or 10mm Allen Key into the jaws of the chuck. Place the tool into a vise with soft jaws (this will require that you remove the belt clip from the tool). It is recommended to use a 12"-18" metal tube or pipe as leverage over the allen key. In a counter-clockwise direction apply a slow, steady force on the 'cheater bar' to break the chuck loose.

INSTALLING NEW CHUCK AND SCREW:

Torque Chuck to 1095 kg/cm (950.418 in/lbs or 79.20 ft/lbs)
Torque Screw to 400 kg/cm (347 in/lbs or 28.93 ft/lbs)

| FIG. | PART NO. | DESCRIPTION OF PART | NO. REQ. |
|------|------------|------------------------------|----------|
| 62 | 12-20-9097 | Service Nameplate | (1) |
| 63 | 49-16-3697 | Bit Holder Kit (Accessory) | (1) |
| 64 | 31-44-7008 | Housing Service Assembly | (1) |
| 65 | 42-70-0950 | Belt Clip Service Kit | (1) |
| 66 | ----- | Gearbox | (1) |
| 67 | 42-66-2720 | 1/2" Keyless Chuck | (1) |
| 68 | 16-07-2983 | Rotor Service Assembly | (1) |
| 69 | 14-20-6560 | Electronic Service Assembly | (1) |
| 70 | 42-62-0550 | Side Handle Service Assembly | (1) |
| 71 | 42-55-9020 | Blow Molded Carrying Case | (1) |
| 72 | ----- | QR Code Label | (1) |
| 75 | ----- | Auto-Stop Label | (1) |
| 76 | 44-06-0049 | Lens/Label Assembly | (1) |
| 77 | 14-29-5015 | Gearbox Service Assembly | (1) |



Position ground ring terminal behind lug of gearcase. Route ground wire through wire trap channel as shown. The view is shown with forward/reverse shuttle removed.

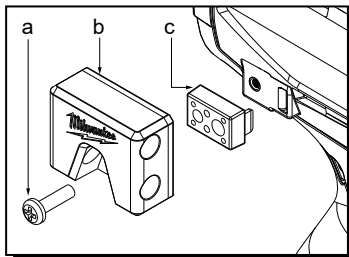
1. Install LED light as shown.
2. Insert light board into housing cavity.
3. Place battery connector block into corresponding housing cavity.

LED Light

Light Board

Battery Connector Block

Bit Holder on M12™ Products



Bit Holder on M18™ Products

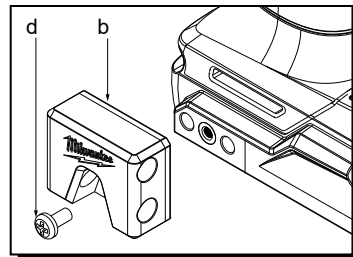


FIG. SERVICE NOTES

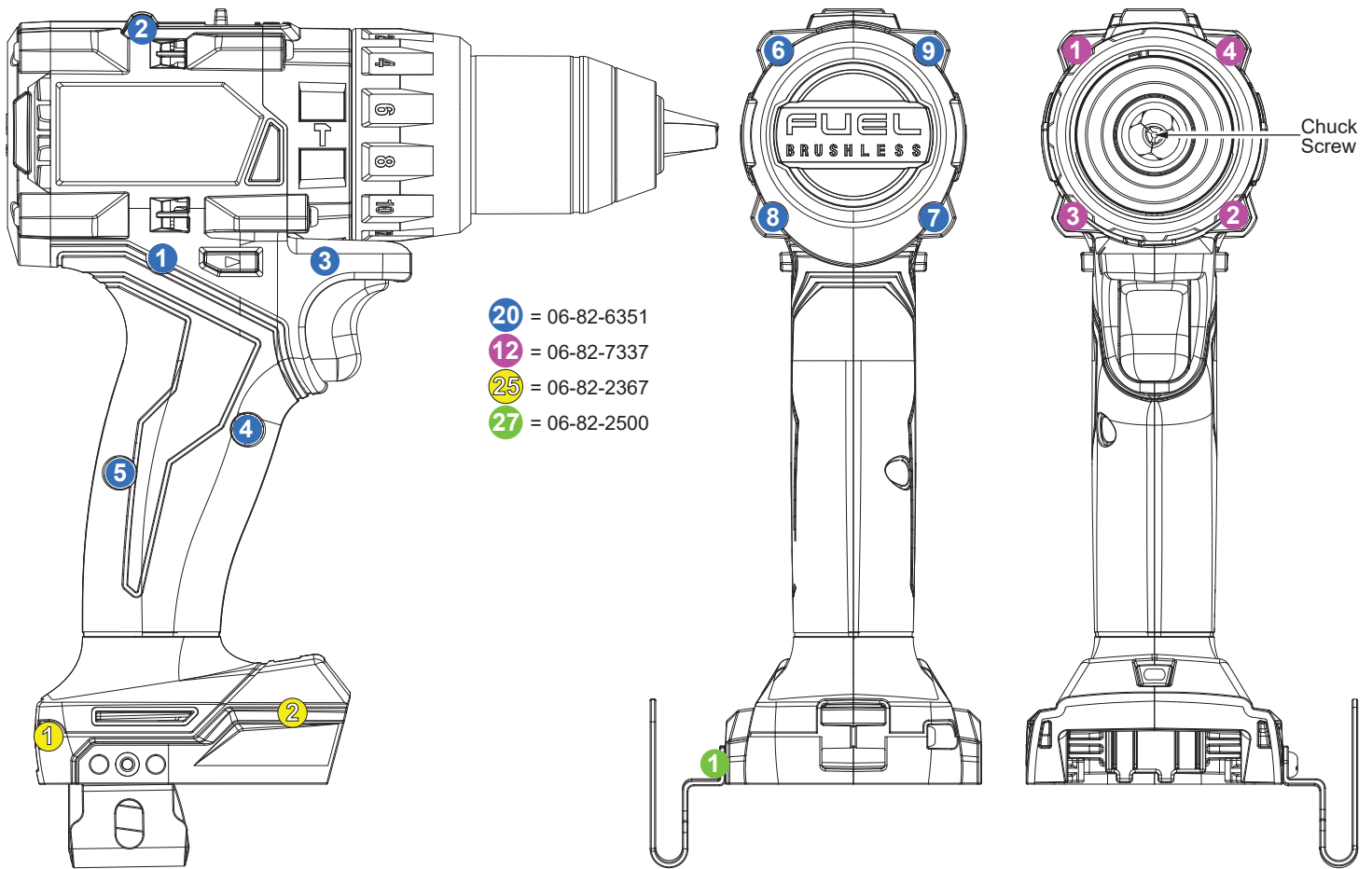
62

A clean, dry surface is essential for proper performance for any adhesive system. The area intended for application of any adhesive label or nameplate must be prepared by cleaning with isopropyl alcohol. The solvent is to be applied with a clean, lint free applicator and the surface allowed to dry before applying the label or nameplate.

49-16-3697 BIT HOLDER (ACCESSORY)

| FIG. | PART NO. | DESCRIPTION OF PART |
|------|------------|---|
| a | 06-82-3008 | 6-32 x 12.7mm Pan Hd. Phillips Screw (For M12™ Tools) |
| b | ----- | Bit Holder |
| c | ----- | Adapter (For M12™ Tools) |
| d | 06-82-2500 | 6-32 x 7mm Pan Hd. Phillips Screw (For M18™ Tools) |

FOR M18™ TOOLS, DISCARD KIT PARTS 'A' AND 'C'.



SCREW TORQUE SPECIFICATIONS

| FIG. | PART NO. | DESCRIPTION OF FASTENER | WHERE USED | SEAT TORQUE | |
|------|------------|------------------------------------|--|-------------|----------|
| | | | | (KGF/CM) | (IN/LBS) |
| 20 | 06-82-6351 | M3 x 16mm Pan Hd. ST T-10 Screw | Right Housing Halve - Cover (Steps 1 thru 5) | 9.0±1 | 7.8±1 |
| 20 | 06-82-6351 | M3 x 16mm Pan Hd. ST T-10 Screw | Back Cap (Steps 6 thru 9) | 9.0±1 | 7.8±1 |
| 12 | 06-82-7337 | M4 x 20mm Pan Hd. ST T-10 w/Washer | Gearbox Service Assembly (Steps 1 thru 4) | 10±1 | 8.6±1 |
| 25 | 06-82-2367 | M3 x 38mm Pan Hd. ST T-10 Screw | Right Housing Halve - Cover (Steps 1 and 2) | 10±1 | 8.6±1 |
| 27 | 06-82-2500 | #6-32 x 7mm Pan Hd. Machine Screw | Belt Clip / Right Housing Halve | 16±2 | 13.8±1 |
| 1 | 05-88-0019 | M8.0 x 1 LH T-40 Chuck Screw | Chuck / Gearbox Spindle | 400±29 | 347±25 |
| 2 | ----- | 1/2" Keyless Chuck | Gearbox Spindle | 1095±58 | 950±50 |