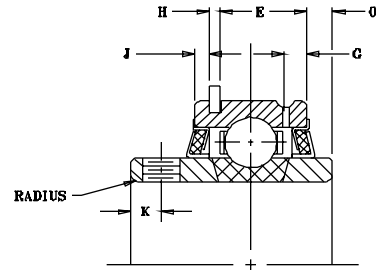
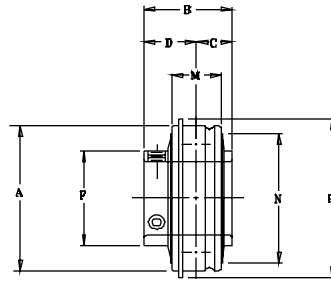


# SEALMASTER® MOUNTED BALL BEARINGS



## ER Series Style "A" Extended Inner Ring Bearing Assemblies...Setscrew Locking

SHAFT DIAM.		BRG. NO.	Dimensions in Inches														UNIT WT.	
IN	MM		A	B	C	D	E	F	G	H	J	K	M	N	RAD	O		P
1/2		ER-8																
9/16		ER-9																
5/8		ER-10	47MM															
11/16		ER-11	1.8504	1 7/32	13/32	13/16	31/64	1 3/16	11/64	3/64	3/32	3/16	5/8	1 5/8	.040	.094	2 1/16	.56
3/4	20	ER-12																
		ER-204																
7/8		ER-14																
15/16		ER-15	52MM															
1	25	ER-16	2.0472	1 3/8	33/64	55/64	39/64	1 3/8	13/64	3/64	3/32	7/32	3/4	1 55/64	.040	.135	2 17/64	.68
		ER-205																
1 1/16		ER-17																
1 1/8		ER-18	62MM															
1 3/16		ER-19	2.4409	1 1/2	5/8	7/8	11/16	1 19/32	7/32	1/16	1/8	7/32	7/8	2 5/32	.040	.188	2 21/32	.93
1 1/4	30	ER-20R																
		ER-206																
1 1/4		ER-20																
1 5/16		ER-21	72MM															
1 3/8		ER-22	2.8346	1 11/16	11/16	1	3/4	1 55/64	7/32	1/16	1/8	1/4	15/16	2 17/32	.040	.219	3 5/64	1.37
1 7/16	35	ER-23																
		ER-207																
1 1/2		ER-24	80MM															
1 9/16	40	ER-25	3.1496	1 15/16	3/4	1 3/16	29/32	2 1/16	1/4	1/16	1/8	5/16	1 3/32	2 53/64	.062	.203	3 13/32	2.00
		ER-208																
1 5/8		ER-26																
1 11/16		ER-27	85MM															
1 3/4	45	ER-28	3.3465	1 15/16	3/4	1 3/16	29/32	2 19/64	1/4	1/16	1/8	5/16	1 3/32	3 1/16	.062	.203	3 19/32	2.31
		ER-209																
1 13/16		ER-29																
1 7/8		ER-30	90MM															
1 15/16		ER-31	3.5433	2 1/32	3/4	1 9/32	29/32	2 15/32	19/64	3/32	1/8	3/8	1 1/8	3 7/32	.062	.188	3 25/32	2.43
2	50	ER-32R																
		ER-210																
2		ER-32																
2 1/8		ER-34	100MM															
2 3/16	55	ER-35	3.9370	2 3/16	7/8	1 5/16	31/32	2 23/32	19/64	3/32	1/8	3/8	1 3/16	3 9/16	.080	.281	4 3/16	3.00
		ER-211																
2 1/4		ER-36																
2 3/8		ER-38	110MM															
2 7/16	60	ER-39	4.3307	2 9/16	1	1 9/16	1 1/32	2 63/64	19/64	3/32	1/8	7/16	1 1/4	3 29/32	.080	.375	4 19/32	4.00
		ER-212																
2 1/2		ER-40																
2 11/16	70	ER-43	125MM															
		ER-214	4.9213	2 3/4	1 1/16	1 11/16	1 7/64	3 7/16	5/16	7/64	5/32	7/16	1 3/8	4 7/16	.080	.375	5 9/32	5.56
2 7/8		ER-46																
2 15/16	75	ER-47	130MM															
		ER-215	5.1181	3 1/16	1 5/16	1 3/4	1 15/64	3 41/64	3/8	7/64	5/32	7/16	1 1/2	4 5/8	.080	.563	5 1/2	6.37
3		ER-48																
3 3/16	80	ER-51	140MM															
		ER-216	5.5118	3 1/4	1 5/16	1 15/16	1 25/64	3 59/64	7/16	7/64	3/16	17/32	1 11/16	4 63/64	.120	.469	5 7/8	7.85
3 1/4		ER-52																
3 3/8		ER-54	150MM															
3 7/16		ER-55	5.9055	3 3/8	1 11/32	2 1/32	1 41/64	4 5/32	7/16	7/64	3/16	15/32	1 15/16	5 19/64	.120	.375	6 9/32	9.50
3 15/16		ER-63																
4		ER-64	190MM															
			7.4803	4 5/8	1 15/16	2 11/16	2 5/32	5 11/64	11/16	1/8	7/32	3/4	2 1/2	6 21/32	.120	.688	8	22.0

For Load Ratings, see page 45.

See page 75 for Table on guide for matching housings using the "ER" style "A" Extended Inner Ring Bearing.

Felt seal standard. For contact seal add suffix "C" ER-16C.