

AXIALLY INSTALLED

HUYETT.COM • 785-392-3017



INTERNAL – BASIC METRIC

DIN 472

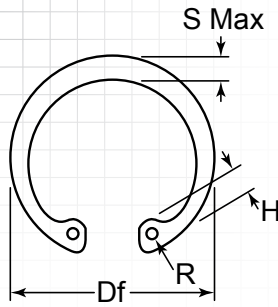


DESCRIPTION

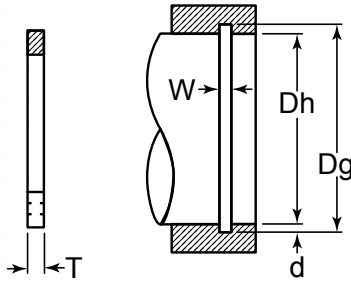
Once installed in the groove of a housing/bore, the portion of the ring protruding from the groove (also called a shoulder) holds an assembly in place.

HOW TO IDENTIFY

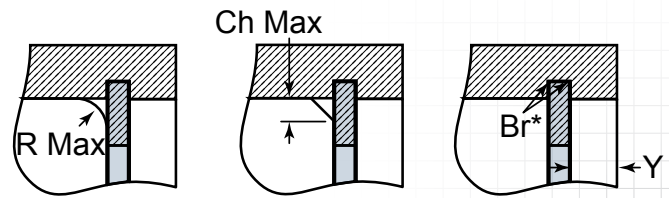
1. Verify internal design and appearance.
2. Measure the housing diameter (Dh).
3. Measure the ring cross section (S Max).
4. Measure the ring thickness (T).
5. Find the part in the chart.



Ring Dimensions



Groove Dimensions



Maximum Corner Radius (R Max) & Chamfer (Ch Max) for Retained Part

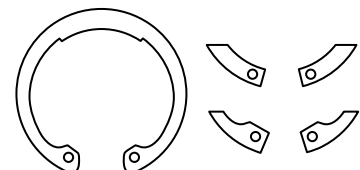
*The radius "Br" on the load side must not exceed 0.1T

Item #	Housing Dia. (mm)	Groove Size					Ring Size & Weight						Supplementary Data					
		Diameter		Width	Depth	Thickness ²		Free Diameter		Lug Hgt.	Max. Sect.	Hole Dia.	Weight	Edge Margin	Thrust Load Ring	Thrust Load Groove	Allowable Radii/ Chamfers	Max. Load w/ R Max. or Ch Max.
		Dh	Dg	Tol.	W Min.	d	T	Tol.	Df	Tol.	H Max.	S Max.	R Min.	kg/ 1,000	Y Min.	Pr kN	Pg kN	R/Ch Max.
DHO-008	8	8.4	+0.09	0.90	0.20	0.80	-0.05	8.7		2.4	1.1	1.0	0.10	0.6	2.0	0.9	0.5	1.5
DHO-009	9	9.4	+0.09	0.90	0.20	0.80	-0.05	9.8		2.5	1.3	1.0	0.13	0.6	2.0	1.0	0.5	1.5
DHO-010	10	10.4	+0.11	1.10	0.20	1.00	-0.06	10.8		3.2	1.4	1.2	0.26	0.6	4.0	1.1	0.5	2.2
DHO-011	11	11.4	+0.11	1.10	0.20	1.00	-0.06	11.8		3.3	1.5	1.2	0.31	0.6	4.0	1.2	0.5	2.3
DHO-012	12	12.5	+0.11	1.10	0.25	1.00	-0.06	13.0	+0.36/-0.10	3.4	1.7	1.5	0.37	0.8	4.0	1.6	0.5	2.3
DHO-013	13	13.6	+0.11	1.10	0.30	1.00	-0.06	14.1		3.6	1.8	1.5	0.42	0.9	4.2	2.1	0.5	2.3
DHO-014	14	14.6	+0.11	1.10	0.30	1.00	-0.06	15.1		3.7	1.8	1.7	0.52	0.9	4.5	2.3	0.5	2.3
DHO-015	15	15.7	+0.11	1.10	0.35	1.00	-0.06	16.2		3.7	2.0	1.7	0.56	1.1	5.0	2.8	0.5	2.3
DHO-016	16	16.8	+0.11	1.10	0.40	1.00	-0.06	17.3		3.8	2.0	1.7	0.60	1.2	5.5	3.4	1.0	2.6
DHO-017	17	17.8	+0.11	1.10	0.40	1.00	-0.06	18.3		3.9	2.1	1.7	0.65	1.2	6.0	3.6	1.0	2.5
DHO-018	18	19.0	+0.13	1.10	0.50	1.00	-0.06	19.5		4.1	2.2	2.0	0.74	1.5	6.5	4.8	1.0	2.6
DHO-019	19	20.0	+0.13	1.10	0.50	1.00	-0.06	20.5		4.1	2.2	2.0	0.83	1.5	6.8	5.10	1.0	2.6
DHO-020	20	21.0	+0.13	1.10	0.50	1.00	-0.06	21.5	+0.42/-0.13	4.2	2.3	2.0	0.90	1.5	7.2	5.4	1.0	2.6
DHO-021	21	22.0	+0.13	1.10	0.50	1.00	-0.06	22.5		4.2	2.4	2.0	1.00	1.5	7.6	5.7	1.0	2.6
DHO-022	22	23.0	+0.13	1.10	0.50	1.00	-0.06	23.5		4.2	2.5	2.0	1.10	1.5	8.0	5.9	1.0	2.7
DHO-023	23	24.1	+0.13	1.30	0.55	1.20	-0.06	24.6		4.2	2.5	2.0	1.34	1.7	8.0	6.8	1.0	4.6
DHO-024	24	25.2	+0.21	1.30	0.60	1.20	-0.06	25.9		4.4	2.6	2.0	1.42	1.8	13.9	7.7	1.0	4.6
DHO-025	25	26.2	+0.21	1.30	0.60	1.20	-0.06	26.9	+0.42/-0.21	4.5	2.7	2.0	1.50	1.8	14.6	8.0	1.0	4.7
DHO-026	26	27.2	+0.21	1.30	0.60	1.20	-0.06	27.9		4.7	2.8	2.0	1.60	1.8	13.8	8.4	1.0	4.6
DHO-027	27	28.4	+0.21	1.30	0.70	1.20	-0.06	29.1		4.7	2.9	2.0	1.75	2.1	13.3	10.1	1.0	4.5

TO ORDER DIFFERENT MATERIAL/FINISHES, APPEND SUFFIX WITH YOUR CHOICE:
"NONE" • -SS • -ZD • -Z3

ALTERNATE DESIGNS

(Manufacturer's Option)



All dimensions in millimeters.
For hardness specifications, see page 52.

² For plated rings add 0.05 mm to the listed maximum thickness. Maximum ring thickness will be a minimum of 0.005 mm less than the listed groove width (W) minimum.

DIN 472

INTERNAL – BASIC METRIC

SUFFIX MATERIAL/FINISH

- ### = CARBON SPRING STEEL, PHOSPHATE
- ###-66 = STAINLESS STEEL, FLAIN
- ###-ZD = CARBON SPRING STEEL, ZINC YELLOW
- ###-Z3 = CARBON SPRING STEEL, ZINC TRIVALENT

Material/finish combinations may not be available in all sizes.
More finishes available, see page 22 for a complete listing.



Item #	Housing Dia. (mm)	Groove Size					Ring Size & Weight							Supplementary Data				
		Diameter		Width	Depth	Thickness ²		Free Diameter		Lug Hgt.	Max. Sect.	Hole Dia.	Weight	Edge Margin	Thrust Load Ring	Thrust Load Groove	Allowable Radii/ Chamfers	Max. Load w/ R Max. or Ch Max.
		Dh	Dg	Tol.	W Min.	d	T	Tol.	Df	Tol.	H Max.	S Max.	R Min.	kg/ 1,000	Y Min.	Pr kN	Pg kN	R/Ch Max.
DHO-028	28	29.4	+0.21	1.30	0.70	1.20	-0.06	30.1	+0.50/ -0.25	4.8	2.9	2.0	1.80	2.1	13.3	10.5	1.0	4.5
DHO-029	29	30.4	+0.25	1.30	0.70	1.20	-0.06	31.1		4.8	3.0	2.0	1.88	2.1	13.6	10.9	1.0	4.6
DHO-030	30	31.4	+0.25	1.30	0.70	1.20	-0.06	32.1		4.8	3.0	2.0	2.06	2.1	13.7	11.3	1.0	4.6
DHO-031	31	32.7	+0.25	1.30	0.85	1.20	-0.06	33.4		5.2	3.1	2.5	2.10	2.6	13.8	14.1	1.0	4.7
DHO-032	32	33.7	+0.25	1.30	0.85	1.20	-0.06	34.4		5.4	3.2	2.5	2.21	2.6	13.8	14.6	1.0	4.7
DHO-033	33	34.7	+0.25	1.30	0.85	1.20	-0.06	35.5	+0.50/ -0.25	5.4	3.3	2.5	2.40	2.6	14.3	15.0	1.0	4.9
DHO-034	34	35.7	+0.25	1.60	0.85	1.50	-0.06	36.5		5.4	3.3	2.5	3.20	2.6	26.2	15.4	1.5	6.3
DHO-035	35	37.0	+0.25	1.60	1.00	1.50	-0.06	37.8		5.4	3.4	2.5	3.54	3.0	26.9	18.8	1.5	6.4
DHO-036	36	38.0	+0.25	1.60	1.00	1.50	-0.06	38.8		5.4	3.5	2.5	3.70	3.0	26.4	19.4	1.5	6.4
DHO-037	37	39.0	+0.25	1.60	1.00	1.50	-0.06	39.8		5.5	3.6	2.5	3.74	3.0	27.1	19.8	1.5	6.5
DHO-038	38	40.0	+0.25	1.60	1.00	1.50	-0.06	40.8	+0.90/ -0.39	5.5	3.7	2.5	3.90	3.0	28.2	22.5	1.5	6.7
DHO-039	39	41.0	+0.25	1.60	1.00	1.50	-0.06	42.0		5.6	3.8	2.5	4.00	3.0	28.8	26.0	1.5	6.9
DHO-040	40	42.5	+0.25	1.85	1.25	1.75	-0.06	43.5		5.8	3.9	2.5	4.70	3.8	44.6	27.0	2.0	8.3
DHO-041	41	43.5	+0.25	1.85	1.25	1.75	-0.06	44.5		5.9	4.0	2.5	5.10	3.8	45.0	27.6	2.0	8.3
DHO-042	42	44.5	+0.25	1.85	1.25	1.75	-0.06	45.5		5.9	4.1	2.5	5.40	3.8	44.7	28.4	2.0	8.4
DHO-043	43	45.5	+0.25	1.85	1.25	1.75	-0.06	46.5	+1.10/ -0.46	5.9	4.2	2.5	5.60	3.8	44.5	28.8	2.0	8.4
DHO-044	44	46.5	+0.25	1.85	1.25	1.75	-0.06	47.5		6.0	4.2	2.5	5.80	3.8	43.3	29.5	2.0	8.3
DHO-045	45	47.5	+0.25	1.85	1.25	1.75	-0.06	48.5		6.2	4.3	2.5	6.00	3.8	43.1	30.2	2.0	8.2
DHO-046	46	48.5	+0.25	1.85	1.25	1.75	-0.06	49.5		6.3	4.4	2.5	6.05	3.8	42.9	30.8	2.0	8.2
DHO-047	47	49.5	+0.25	1.85	1.25	1.75	-0.06	50.5		6.4	4.4	2.5	6.10	3.8	43.5	31.4	2.0	8.3
DHO-048	48	50.5	+0.30	1.85	1.25	1.75	-0.06	51.5	+1.10/ -0.46	6.4	4.5	2.5	6.70	3.8	43.2	32.0	2.0	8.4
DHO-050	50	53.0	+0.30	2.15	1.50	2.00	-0.07	54.2		6.5	4.6	2.5	7.30	4.5	60.8	40.5	2.0	12.1
DHO-051	51	54.0	+0.30	2.15	1.50	2.00	-0.07	55.2		6.5	4.7	2.5	7.75	4.5	60.2	41.2	2.0	12.0
DHO-052	52	55.0	+0.30	2.15	1.50	2.00	-0.07	56.2		6.7	4.7	2.5	8.20	4.5	60.2	42.0	2.0	12.0
DHO-053	53	56.0	+0.30	2.15	1.50	2.00	-0.07	57.2		6.7	4.9	2.5	8.22	4.5	60.7	42.9	2.0	12.1
DHO-054	54	57.0	+0.30	2.15	1.50	2.00	-0.07	58.2		6.7	5.0	2.5	8.25	4.5	60.4	43.6	2.0	12.3
DHO-055	55	58.0	+0.30	2.15	1.50	2.00	-0.07	59.2		6.8	5.0	2.5	8.30	4.5	60.3	44.4	2.0	12.5
DHO-056	56	59.0	+0.30	2.15	1.50	2.00	-0.07	60.2		6.8	5.1	2.5	8.80	4.5	60.3	45.2	2.0	12.6
DHO-057	57	60.0	+0.30	2.15	1.50	2.00	-0.07	61.2		6.8	5.1	2.5	9.40	4.5	60.8	46.0	2.0	12.7
DHO-058	58	61.0	+0.30	2.15	1.50	2.00	-0.07	62.2		6.9	5.2	2.5	10.50	4.5	60.8	46.7	2.0	12.7
DHO-060	60	63.0	+0.30	2.15	1.50	2.00	-0.07	64.2		7.3	5.4	2.5	11.10	4.5	61.0	48.3	2.0	13.0
DHO-062	62	65.0	+0.30	2.15	1.50	2.00	-0.07	66.2		7.3	5.5	2.5	11.20	4.5	60.9	49.8	2.0	13.0
DHO-063	63	66.0	+0.30	2.15	1.50	2.00	-0.07	67.2		7.3	5.6	2.5	12.40	4.5	60.8	50.6	2.0	13.0
DHO-064	64	67.0	+0.30	2.15	1.50	2.00	-0.07	68.2		7.4	5.7	2.5	12.45	4.5	60.6	51.4	2.0	13.0
DHO-065	65	68.0	+0.30	2.65	1.50	2.50	-0.07	69.2		7.6	5.8	3.0	14.30	4.5	121.0	51.8	2.5	20.8



INSTALLATION
TOOLS AVAILABLE,
SEE PAGE 248



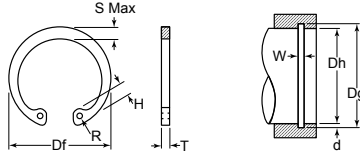
AXIALLY INSTALLED

HUYETT.COM • 785-392-3017



INTERNAL – BASIC METRIC

DIN 472



HOW TO IDENTIFY

1. Verify internal design and appearance.
2. Measure the housing diameter (Dh).
3. Measure the ring cross section (S Max).
4. Measure the ring thickness (T).
5. Find the part in the chart.

Item #	Housing Dia. (mm)	Groove Size			Ring Size & Weight						Supplementary Data							
		Diameter		Width	Depth	Thickness ²		Free Diameter		Lug Hgt.	Max. Sect.	Hole Dia.	Weight	Edge Margin	Thrust Load Ring	Thrust Load Groove	Allowable Radii/ Chamfers	Max. Load w/ R Max. or Ch Max.
		Dh	Dg	Tol.	W Min.	d	T	Tol.	Df	Tol.	H Max.	S Max.	R Min.	kg/ 1,000	Y Min.	Pr kN	Pg kN	RJ/Ch Max.
DHO-067	67	70.0	+0.30	2.65	1.50	2.50	-0.07	71.5	+1.10/ -0.46	7.7	6.0	3.0	15.30	4.5	121.0	53.8	2.5	21.1
DHO-068	68	71.0	+0.30	2.65	1.50	2.50	-0.07	72.5		7.8	6.1	3.0	16.00	4.5	119.0	56.2	2.5	21.0
DHO-070	70	73.0	+0.30	2.65	1.50	2.50	-0.07	74.5		7.8	6.2	3.0	16.50	4.5	119.0	56.2	2.5	21.0
DHO-072	72	75.0	+0.30	2.65	1.50	2.50	-0.07	76.5		7.8	6.4	3.0	18.10	4.5	119.0	58.0	2.5	21.0
DHO-075	75	78.0	+0.30	2.65	1.50	2.50	-0.07	79.5		7.8	6.6	3.0	18.80	4.5	118.0	60.0	2.5	21.0
DHO-076	76	79.0	+0.30	2.65	1.50	2.50	-0.07	80.5		7.8	6.6	3.0	19.00	4.5	119.0	61.0	2.5	21.0
DHO-078	77	80.0	+0.30	2.65	1.50	2.50	-0.07	82.5		8.5	6.8	3.0	20.40	4.5	121.0	61.6	2.5	21.5
	78	81.0	+0.35	2.65	1.50	2.50	-0.07	82.5		8.5	6.8	3.0	20.40	4.5	122.0	62.3	2.5	21.8
DHO-080	80	83.5	+0.35	2.65	1.75	2.50	-0.07	85.5		8.5	7.0	3.0	22.00	5.3	120.0	74.6	2.5	21.8
DHO-081	81	84.5	+0.35	2.65	1.75	2.50	-0.07	86.5		8.5	7.0	3.0	23.00	5.3	119.0	75.8	2.5	21.6
DHO-082	82	85.5	+0.35	2.65	1.75	2.50	-0.07	87.5	8.5	7.0	3.0	24.00	5.3	119.0	76.6	2.5	21.4	
DHO-083	83	86.5	+0.35	2.65	1.75	2.50	-0.07	88.5	8.5	7.0	3.0	25.00	5.3	118.0	77.5	2.5	21.2	
DHO-085	85	88.5	+0.35	3.15	1.75	3.00	-0.08	90.5	8.6	7.2	3.5	25.30	5.3	201.0	79.5	3.0	31.2	
DHO-088	87	90.5	+0.35	3.15	1.75	3.00	-0.08	93.5	8.6	7.4	3.5	31.00	5.3	204.0	81.3	3.0	31.8	
	88	91.5	+0.35	3.15	1.75	3.00	-0.08	93.5	8.6	7.4	3.5	31.00	5.3	209.0	82.0	3.0	32.7	
DHO-090	90	93.5	+0.35	3.15	1.75	3.00	-0.08	95.5	8.6	7.6	3.5	33.00	5.3	199.0	84.0	3.0	31.4	
DHO-092	92	95.5	+0.35	3.15	1.75	3.00	-0.08	97.5	+1.30/ -0.54	8.7	7.8	3.5	35.00	5.3	201.0	85.0	3.0	32.0
DHO-095	95	98.5	+0.35	3.15	1.75	3.00	-0.08	100.5	8.8	8.1	3.5	37.00	5.3	195.0	88.0	3.0	31.4	
DHO-098	97	100.5	+0.35	3.15	1.75	3.00	-0.08	103.5	9.0	8.3	3.5	41.00	5.3	193.0	90.0	3.0	31.2	
	98	101.5	+0.35	3.15	1.75	3.00	-0.08	103.5	9.0	8.3	3.5	41.00	5.3	191.0	91.0	3.0	31.0	
DHO-100	100	103.5	+0.35	3.15	1.75	3.00	-0.08	105.5	9.2	8.4	3.5	42.00	5.3	188.0	93.0	3.0	30.8	
DHO-102	102	106.0	+0.54	4.15	2.00	4.00	-0.10	108.0	9.5	8.5	3.5	55.00	6.0	439.0	108.0	3.0	72.6	
DHO-105	105	109.0	+0.54	4.15	2.00	4.00	-0.10	112.0	9.5	8.7	3.5	56.00	6.0	436.0	112.0	3.0	73.0	
DHO-108	107	111.0	+0.54	4.15	2.00	4.00	-0.10	115.0	9.5	8.9	3.5	60.00	6.0	425.0	114.0	3.0	71.6	
	108	112.0	+0.54	4.15	2.00	4.00	-0.10	115.0	9.5	8.9	3.5	60.00	6.0	419.0	115.0	3.0	71.0	
DHO-110	110	114.0	+0.54	4.15	2.00	4.00	-0.10	117.0	10.4	9.0	3.5	64.50	6.0	415.0	117.0	3.0	71.0	
DHO-112	112	116.0	+0.54	4.15	2.00	4.00	-0.10	119.0	10.5	9.1	3.5	72.00	6.0	418.0	119.0	3.0	72.0	
DHO-115	115	119.0	+0.54	4.15	2.00	4.00	-0.10	122.0	10.5	9.3	3.5	74.50	6.0	409.0	122.0	3.0	71.2	
DHO-118	117	121.0	+0.63	4.15	2.00	4.00	-0.10	125.0	+1.50/ -0.63	10.7	9.6	3.5	75.50	6.0	399.0	124.0	3.0	70.0
	118	122.0	+0.63	4.15	2.00	4.00	-0.10	125.0	10.7	9.6	3.5	75.50	6.0	394.0	125.0	3.0	69.3	

TO ORDER DIFFERENT MATERIAL/FINISHES,
APPEND SUFFIX WITH YOUR CHOICE:
"NONE" • -SS • -ZD • -Z3

All dimensions in millimeters.
For hardness specifications, see page 52.

² For plated rings add 0.05 mm to the listed maximum thickness. Maximum ring thickness will be a minimum of 0.005 mm less than the listed groove width (W) minimum.



INSTALLATION
TOOLS AVAILABLE,
SEE PAGE 248

DIN 472

INTERNAL – BASIC METRIC

SUFFIX MATERIAL/FINISH

- ### = CARBON SPRING STEEL, PHOSPHATE
- ###-66 = STAINLESS STEEL, FLAIN
- ###-ZD = CARBON SPRING STEEL, ZINC YELLOW
- ###-Z3 = CARBON SPRING STEEL, ZINC TRIVALENT

Material/finish combinations may not be available in all sizes.
More finishes available, see page 22 for a complete listing.



Item #	Housing Dia. (mm)	Groove Size						Ring Size & Weight						Supplementary Data				
		Diameter		Width	Depth	Thickness ²		Free Diameter		Lug Hgt.	Max. Sect.	Hole Dia.	Weight	Edge Margin	Thrust Load Ring	Thrust Load Groove	Allowable Radii/ Chamfers	Max. Load w/ R Max. or Ch Max.
		Dh	Dg	Tol.	W Min.	d	T	Tol.	Df	Tol.	H Max.	S Max.	R Min.	kg/ 1,000	Y Min.	Pr kN	Pg kN	R/Ch Max.
DHO-120	120	124.0	+0.63	4.15	2.00	4.00	-0.10	127.0		11.0	9.7	3.5	77.00	6.0	396.0	127.0	3.0	70.0
DHO-122	122	126.0	+0.63	4.15	2.00	4.00	-0.10	129.0		11.0	9.8	4.0	78.00	6.0	399.0	129.0	3.0	71.0
DHO-125	125	129.0	+0.63	4.15	2.00	4.00	-0.10	132.0		11.0	10.0	4.0	79.00	6.0	385.0	132.0	3.0	70.0
DHO-128	127	131.0	+0.63	4.15	2.00	4.00	-0.10	135.0		11.0	10.0	4.0	81.00	6.0	383.0	135.0	3.0	70.0
	128	132.0	+0.63	4.15	2.00	4.00	-0.10	135.0		11.0	10.2	4.0	81.00	6.0	378.0	136.0	3.0	69.0
DHO-130	130	134.0	+0.63	4.15	2.00	4.00	-0.10	137.0		11.0	10.2	4.0	82.00	6.0	374.0	138.0	3.0	69.0
DHO-132	132	136.0	+0.63	4.15	2.00	4.00	-0.10	139.0		11.0	10.3	4.0	83.00	6.0	366.0	140.0	3.0	68.0
DHO-135	135	139.0	+0.63	4.15	2.00	4.00	-0.10	142.0		11.2	10.5	4.0	84.00	6.0	358.0	143.0	3.0	67.0
DHO-138	137	141.0	+0.63	4.15	2.00	4.00	-0.10	145.0		11.2	10.6	4.0	86.00	6.0	356.0	145.0	3.0	67.0
	138	142.0	+0.63	4.15	2.00	4.00	-0.10	145.0		11.2	10.6	4.0	86.00	6.0	352.0	146.0	3.0	66.5
DHO-140	140	144.0	+0.63	4.15	2.00	4.00	-0.10	147.0		11.2	10.7	4.0	87.50	6.0	350.0	148.0	3.0	66.5
DHO-142	142	146.0	+0.63	4.15	2.00	4.00	-0.10	149.0		11.3	10.8	4.0	89.00	6.0	342.0	150.0	3.0	65.5
DHO-145	145	149.0	+0.63	4.15	2.00	4.00	-0.10	152.0	+1.50/-0.63	11.4	10.9	4.0	93.00	6.0	336.0	153.0	3.0	65.0
DHO-148	147	151.0	+0.63	4.15	2.00	4.00	-0.10	155.0		11.8	11.1	4.0	100.00	6.0	336.0	156.0	3.0	65.0
	148	152.0	+0.63	4.15	2.00	4.00	-0.10	155.0		11.8	11.1	4.0	100.00	6.0	331.0	157.0	3.0	64.5
DHO-150	150	155.0	+0.63	4.15	2.50	4.00	-0.10	158.0		12.0	11.2	4.0	105.00	7.5	326.0	191.0	3.0	64.0
DHO-152	152	157.0	+0.63	4.15	2.50	4.00	-0.10	161.0		12.0	11.3	4.0	106.00	7.5	326.0	202.0	3.5	55.0
DHO-155	155	160.0	+0.63	4.15	2.50	4.00	-0.10	164.0		12.0	11.4	4.0	107.00	7.5	324.0	206.0	3.5	55.0
DHO-158	157	162.0	+0.63	4.15	2.50	4.00	-0.10	167.0		12.3	11.5	4.0	109.00	7.5	328.0	208.0	3.5	55.5
	158	163.0	+0.63	4.15	2.50	4.00	-0.10	167.0		12.3	11.5	4.0	109.00	7.5	326.0	210.0	3.5	55.0
DHO-160	160	165.0	+0.63	4.15	2.50	4.00	-0.10	169.0		13.0	11.6	4.0	110.00	7.5	321.0	212.0	3.5	54.5
DHO-162	162	167.0	+0.63	4.15	2.50	4.00	-0.10	171.5		13.0	11.7	4.0	118.00	7.5	321.0	215.0	3.5	54.5
DHO-165	165	170.0	+0.63	4.15	2.50	4.00	-0.10	174.5		13.0	11.8	4.0	125.00	7.5	319.0	219.0	3.5	54.0
DHO-168	167	172.0	+0.63	4.15	2.50	4.00	-0.10	177.5		13.5	12.1	4.0	135.00	7.5	355.0	221.0	3.5	60.0
	168	173.0	+0.63	4.15	2.50	4.00	-0.10	177.5		13.5	12.1	4.0	135.00	7.5	353.0	223.0	3.5	60.0
DHO-170	170	175.0	+0.63	4.15	2.50	4.00	-0.10	179.5		13.5	12.2	4.0	140.00	7.5	349.0	225.0	3.5	59.0
DHO-172	172	177.0	+0.63	4.15	2.50	4.00	-0.10	181.5		13.5	12.5	4.0	145.00	7.5	357.0	228.0	3.5	60.0
DHO-175	175	180.0	+0.63	4.15	2.50	4.00	-0.10	184.5		13.5	12.7	4.0	150.00	7.5	351.0	232.0	3.5	59.0
DHO-178	177	182.0	+0.72	4.15	2.50	4.00	-0.10	187.5		14.2	12.9	4.0	162.00	7.5	346.0	235.0	3.5	58.5
	178	183.0	+0.72	4.15	2.50	4.00	-0.10	187.5		14.2	12.9	4.0	162.00	7.5	344.0	236.0	3.5	58.0
DHO-180	180	185.0	+0.72	4.15	2.50	4.00	-0.10	189.5		14.2	13.2	4.0	165.00	7.5	347.0	238.0	3.5	58.5
DHO-182	182	187.0	+0.72	4.15	2.50	4.00	-0.10	191.5		14.2	13.5	4.0	168.00	7.5	355.0	241.0	3.5	60.0
DHO-185	185	190.0	+0.72	4.15	2.50	4.00	-0.10	194.5	+1.70/-0.72	14.2	13.7	4.0	170.00	7.5	349.0	245.0	3.5	59.0
DHO-188	187	192.0	+0.72	4.15	2.50	4.00	-0.10	197.5		14.2	13.8	4.0	174.00	7.5	345.0	248.0	3.5	58.5
	188	193.0	+0.72	4.15	2.50	4.00	-0.10	197.5		14.2	13.8	4.0	174.00	7.5	343.0	249.0	3.5	58.0
DHO-190	190	195.0	+0.72	4.15	2.50	4.00	-0.10	199.5		14.2	13.8	4.0	175.00	7.5	340.0	251.0	3.5	57.5
DHO-192	192	197.0	+0.72	4.15	2.50	4.00	-0.10	201.5		14.2	13.8	4.0	178.00	7.5	336.0	254.0	3.5	57.0
DHO-195	195	200.0	+0.72	4.15	2.50	4.00	-0.10	204.5		14.2	13.8	4.0	183.00	7.5	330.0	258.0	3.5	55.5
DHO-198	197	202.0	+0.72	4.15	2.50	4.00	-0.10	207.5		14.2	14.0	4.0	190.00	7.5	330.0	260.0	3.5	55.5
	198	203.0	+0.72	4.15	2.50	4.00	-0.10	207.5		14.2	14.0	4.0	190.00	7.5	329.0	262.0	3.5	55.5

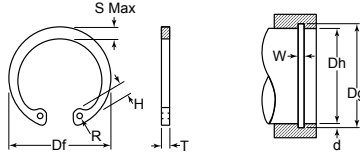
AXIALLY INSTALLED

HUYETT.COM • 785-392-3017



INTERNAL – BASIC METRIC

DIN 472



HOW TO IDENTIFY

1. Verify internal design and appearance.
2. Measure the housing diameter (Dh).
3. Measure the ring cross section (S Max).
4. Measure the ring thickness (T).
5. Find the part in the chart.

Item #	Housing Dia. (mm)		Groove Size			Ring Size & Weight						Supplementary Data						
			Diameter	Width	Depth	Thickness ²	Free Diameter	Lug Hgt.	Max. Sect.	Hole Dia.	Weight	Edge Margin	Thrust Load Ring	Thrust Load Groove	Allowable Radii/ Chamfers	Max. Load w/ R Max. or Ch Max.		
	Dh	Dg	Tol.	W Min.	d	T	Tol.	Df	Tol.	H Max.	S Max.	R Min.	kg/ 1,000	Y Min.	Pr kN	Pg kN	R/Ch Max.	P'r kN
DHO-200	200	205.0	+0.72	4.15	2.50	4.00	-0.10	209.5		14.2	14.0	4.0	195.00	7.5	325.0	265.0	3.5	55.0
DHO-202	202	208.0	+0.72	5.15	3.00	5.00	-0.12	214.0		14.2	14.0	4.0	210.00	9.0	625.0	321.0	4.0	92.5
DHO-205	205	211.0	+0.72	5.15	3.00	5.00	-0.12	217.0		14.2	14.0	4.0	225.00	9.0	616.0	326.0	4.0	91.5
	207	213.0	+0.72	5.15	3.00	5.00	-0.12	217.0		14.2	14.0	4.0	225.00	9.0	610.0	329.0	4.0	90.0
DHO-210	208	214.0	+0.72	5.15	3.00	5.00	-0.12	222.0		14.2	14.0	4.0	270.00	9.0	607.0	331.0	4.0	90.0
	210	216.0	+0.72	5.15	3.00	5.00	-0.12	222.0		14.2	14.0	4.0	270.00	9.0	601.0	333.0	4.0	89.5
	212	218.0	+0.72	5.15	3.00	5.00	-0.12	222.0		14.2	14.0	4.0	270.00	9.0	596.0	337.0	4.0	88.5
DHO-215	215	221.0	+0.72	5.15	3.00	5.00	-0.12	227.0	+1.70/-0.72	14.2	14.0	4.0	300.00	9.0	586.0	341.0	4.0	87.0
	217	223.0	+0.72	5.15	3.00	5.00	-0.12	227.0		14.2	14.0	4.0	300.00	9.0	581.0	345.0	4.0	86.0
DHO-220	218	224.0	+0.72	5.15	3.00	5.00	-0.12	232.0		14.2	14.0	4.0	315.00	9.0	580.0	346.0	4.0	86.0
	220	226.0	+0.72	5.15	3.00	5.00	-0.12	232.0		14.2	14.0	4.0	315.00	9.0	574.0	349.0	4.0	85.0
	222	228.0	+0.72	5.15	3.00	5.00	-0.12	232.0		14.2	14.0	4.0	315.00	9.0	568.0	353.0	4.0	84.0
DHO-225	225	231.0	+0.72	5.15	3.00	5.00	-0.12	237.0		14.2	14.0	4.0	323.00	9.0	560.0	357.0	4.0	83.0
	227	233.0	+0.72	5.15	3.00	5.00	-0.12	237.0		14.2	14.0	4.0	323.00	9.0	555.0	361.0	4.0	82.0
DHO-230	228	234.0	+0.72	5.15	3.00	5.00	-0.12	242.0		14.2	14.0	4.0	330.00	9.0	554.0	362.0	4.0	82.0
	230	236.0	+0.72	5.15	3.00	5.00	-0.12	242.0		14.2	14.0	4.0	330.00	9.0	549.0	365.0	4.0	81.0
	232	238.0	+0.72	5.15	3.00	5.00	-0.12	242.0		14.2	14.0	4.0	330.00	9.0	544.0	369.0	4.0	80.5
DHO-235	235	241.0	+0.72	5.15	3.00	5.00	-0.12	247.0		14.2	14.0	4.0	338.00	9.0	536.0	373.0	4.0	79.5
	237	243.0	+0.72	5.15	3.00	5.00	-0.12	247.0		14.2	14.0	4.0	338.00	9.0	531.0	376.0	4.0	79.0
DHO-240	238	244.0	+0.72	5.15	3.00	5.00	-0.12	252.0		14.2	14.0	4.0	345.00	9.0	530.0	378.0	4.0	79.0
	240	246.0	+0.72	5.15	3.00	5.00	-0.12	252.0		14.2	14.0	4.0	345.00	9.0	525.0	380.0	4.0	77.5
	242	248.0	+0.81	5.15	3.00	5.00	-0.12	252.0		14.2	14.0	4.0	345.00	9.0	521.0	385.0	4.0	77.0
DHO-245	245	251.0	+0.81	5.15	3.00	5.00	-0.12	257.0	+2.00/-0.81	14.2	14.0	4.0	353.00	9.0	514.0	389.0	4.0	76.5
	247	253.0	+0.81	5.15	3.00	5.00	-0.12	257.0		14.2	14.0	4.0	353.00	9.0	509.0	392.0	4.0	76.0
DHO-250	248	254.0	+0.81	5.15	3.00	5.00	-0.12	262.0		14.2	14.0	4.0	360.00	9.0	507.0	394.0	4.0	75.5
	250	256.0	+0.81	5.15	3.00	5.00	-0.12	262.0		14.2	14.0	4.0	360.00	9.0	504.0	396.0	4.0	75.0
DHO-252	252	260.0	+0.81	5.15	4.00	5.00	-0.12	262.0		14.2	16.0	5.0	360.00	12.0	557.0	535.0	4.0	83.0
DHO-255	255	263.0	+0.81	5.15	4.00	5.00	-0.12	270.0		16.2	16.0	5.0	368.00	12.0	549.0	541.0	4.0	81.5
	257	265.0	+0.81	5.15	4.00	5.00	-0.12	270.0		16.2	16.0	5.0	368.00	12.0	545.0	546.0	4.0	81.0
DHO-260	258	266.0	+0.81	5.15	4.00	5.00	-0.12	275.0		16.2	16.0	5.0	375.00	12.0	543.0	548.0	4.0	80.5
	260	268.0	+0.81	5.15	4.00	5.00	-0.12	275.0		16.2	16.0	5.0	375.00	12.0	538.0	553.0	4.0	80.0
	262	270.0	+0.81	5.15	4.00	5.00	-0.12	275.0	+2.00/-0.81	16.2	16.0	5.0	375.00	12.0	535.0	556.0	4.0	79.0
DHO-265	265	273.0	+0.81	5.15	4.00	5.00	-0.12	280.0		16.2	16.0	5.0	383.00	12.0	528.0	563.0	4.0	78.5
	267	275.0	+0.81	5.15	4.00	5.00	-0.12	280.0		16.2	16.0	5.0	383.00	12.0	524.0	566.0	4.0	78.0

TO ORDER DIFFERENT MATERIAL/FINISHES, APPEND SUFFIX WITH YOUR CHOICE:
 "NONE" • -SS • -ZD • -Z3

All dimensions in millimeters.
 For hardness specifications, see page 52.

² For plated rings add 0.05 mm to the listed maximum thickness. Maximum ring thickness will be a minimum of 0.005 mm less than the listed groove width (W) minimum.

STACKED OPTIONS AVAILABLE, SEE HUYETT.COM FOR MORE DETAILS

DIN 472

INTERNAL – BASIC METRIC

SUFFIX MATERIAL/FINISH

- ### = CARBON SPRING STEEL, PHOSPHATE
- ###-SS = STAINLESS STEEL, PLAIN
- ###-ZD = CARBON SPRING STEEL, ZINC YELLOW
- ###-Z3 = CARBON SPRING STEEL, ZINC TRIVALENT

Material/finish combinations may not be available in all sizes.
More finishes available, see page 22 for a complete listing.



Item #	Housing Dia. (mm)	Groove Size				Ring Size & Weight						Supplementary Data						
		Diameter		Width	Depth	Thickness ²		Free Diameter		Lug Hgt.	Max. Sect.	Hole Dia.	Weight	Edge Margin	Thrust Load Ring	Thrust Load Groove	Allowable Radii/ Chamfers	Max. Load w/ R Max. or Ch Max.
		Dh	Dg	Tol.	W Min.	d	T	Tol.	Df	Tol.	H Max.	Ø Max.	R Min.	kg/ 1,000	Y Min.	Pr kN	Pg kN	R/Ch Max.
DHO-270	268	276.0	+0.81	5.15	4.00	5.00	-0.12	285.0		16.2	16.0	5.0	388.00	12.0	522.0	570.0	4.0	77.5
	270	278.0	+0.81	5.15	4.00	5.00	-0.12	285.0		16.2	16.0	5.0	388.00	12.0	518.0	573.0	4.0	77.0
	272	280.0	+0.81	5.15	4.00	5.00	-0.12	285.0		16.2	16.0	5.0	388.00	12.0	515.0	577.0	4.0	76.5
DHO-275	275	283.0	+0.81	5.15	4.00	5.00	-0.12	290.0		16.2	16.0	5.0	393.00	12.0	509.0	585.0	4.0	75.5
	277	285.0	+0.81	5.15	4.00	5.00	-0.12	290.0		16.2	16.0	5.0	393.00	12.0	505.0	587.0	4.0	75.0
DHO-280	278	286.0	+0.81	5.15	4.00	5.00	-0.12	295.0		16.2	16.0	5.0	400.00	12.0	504.0	590.0	4.0	75.0
	280	288.0	+0.81	5.15	4.00	5.00	-0.12	295.0		16.2	16.0	5.0	400.00	12.0	499.0	593.0	4.0	74.0
	282	290.0	+0.81	5.15	4.00	5.00	-0.12	295.0		16.2	16.0	5.0	400.00	12.0	497.0	599.0	4.0	74.0
DHO-285	285	293.0	+0.81	5.15	4.00	5.00	-0.12	300.0	+2.00/-0.81	16.2	16.0	5.0	408.00	12.0	491.0	605.0	4.0	73.0
	287	295.0	+0.81	5.15	4.00	5.00	-0.12	300.0		16.2	16.0	5.0	408.00	12.0	487.0	610.0	4.0	72.0
DHO-290	288	296.0	+0.81	5.15	4.00	5.00	-0.12	305.0		16.2	16.0	5.0	415.00	12.0	485.0	611.0	4.0	72.0
	290	298.0	+0.81	5.15	4.00	5.00	-0.12	305.0		16.2	16.0	5.0	415.00	12.0	482.0	615.0	4.0	71.5
	292	300.0	+0.81	5.15	4.00	5.00	-0.12	305.0		16.2	16.0	5.0	415.00	12.0	479.0	620.0	4.0	71.0
DHO-295	295	303.0	+0.81	5.15	4.00	5.00	-0.12	310.0		16.2	16.0	5.0	426.00	12.0	474.0	625.0	4.0	70.5
	297	305.0	+0.81	5.15	4.00	5.00	-0.12	310.0		16.2	16.0	5.0	426.00	12.0	471.0	630.0	4.0	70.5
DHO-300	298	306.0	+0.81	5.15	4.00	5.00	-0.12	315.0		16.2	16.0	5.0	435.00	12.0	469.0	631.0	4.0	69.5
	300	308.0	+0.81	5.15	4.00	5.00	-0.12	315.0		16.2	16.0	5.0	435.00	12.0	466.0	636.0	4.0	69.0
DHO-305	305	315.0	+0.81	6.20	5.00	6.00	-0.15	322.0		16.2	20.0	6.0	755.00	15.0	961.0	810.0	5.0	114.0
DHO-310	310	320.0	+0.89	6.20	5.00	6.00	-0.15	327.0		20.2	20.0	6.0	770.00	15.0	947.0	823.0	5.0	113.0
DHO-315	315	325.0	+0.89	6.20	5.00	6.00	-0.15	332.0		20.2	20.0	6.0	785.00	15.0	934.0	837.0	5.0	111.0
DHO-320	320	330.0	+0.89	6.20	5.00	6.00	-0.15	337.0		20.2	20.0	6.0	800.00	15.0	919.0	850.0	5.0	109.0
DHO-325	325	335.0	+0.89	6.20	5.00	6.00	-0.15	342.0		20.2	20.0	6.0	810.00	15.0	906.0	864.0	5.0	108.0
DHO-330	330	340.0	+0.89	6.20	5.00	6.00	-0.15	347.0		20.2	20.0	6.0	820.00	15.0	894.0	876.0	5.0	106.0
DHO-335	335	345.0	+0.89	6.20	5.00	6.00	-0.15	352.0		20.2	20.0	6.0	830.00	15.0	880.0	890.0	5.0	105.0
DHO-340	340	350.0	+0.89	6.20	5.00	6.00	-0.15	357.0	+2.00/-0.90	20.2	20.0	6.0	840.00	15.0	869.0	903.0	5.0	104.0
DHO-345	345	355.0	+0.89	6.20	5.00	6.00	-0.15	362.0		20.2	20.0	6.0	855.00	15.0	857.0	916.0	5.0	102.0
DHO-350	350	360.0	+0.89	6.20	5.00	6.00	-0.15	367.0		20.2	20.0	6.0	870.00	15.0	846.0	929.0	5.0	101.0
DHO-355	355	365.0	+0.89	6.20	5.00	6.00	-0.15	372.0		20.2	20.0	6.0	880.00	15.0	834.0	942.0	5.0	99.0
DHO-360	360	370.0	+0.89	6.20	5.00	6.00	-0.15	377.0		20.2	20.0	6.0	890.00	15.0	823.0	955.0	5.0	98.0
DHO-365	365	375.0	+0.89	6.20	5.00	6.00	-0.15	382.0		20.2	20.0	6.0	906.00	15.0	813.0	968.0	5.0	97.0
DHO-370	370	380.0	+0.89	6.20	5.00	6.00	-0.15	387.0		20.2	20.0	6.0	920.00	15.0	803.0	981.0	5.0	95.0
DHO-375	375	385.0	+0.89	6.20	5.00	6.00	-0.15	392.0		20.2	20.0	6.0	932.00	15.0	793.0	994.0	5.0	94.0
DHO-380	380	390.0	+0.89	6.20	5.00	6.00	-0.15	397.0		20.2	20.0	6.0	940.00	15.0	784.0	1,008.0	5.0	93.0
DHO-385	385	395.0	+0.89	6.20	5.00	6.00	-0.15	402.0		20.2	20.0	6.0	950.00	15.0	774.0	1,021.0	5.0	92.0
DHO-390	390	400.0	+0.89	6.20	5.00	6.00	-0.15	407.0		20.2	20.0	6.0	960.00	15.0	764.0	1,033.0	5.0	91.0
DHO-395	395	405.0	+1.00	6.20	5.00	6.00	-0.15	412.0		20.2	20.0	6.0	972.00	15.0	756.0	1,047.0	5.0	90.0
DHO-400	400	410.0	+1.00	6.20	5.00	6.00	-0.15	417.0	+2.00/-1.00	20.2	20.0	6.0	980.00	15.0	746.0	1,060.0	5.0	89.0
DHO-410	410	422.0	+1.00	7.20	6.00	7.00	-0.15	430.0		26.2	26.0	6.0	1,380.00	18.0	1,512.0	1,307.0	6.0	150.0
DHO-420	420	432.0	+1.00	7.20	6.00	7.00	-0.15	440.0		26.2	26.0	6.0	1,410.00	18.0	1,480.0	1,338.0	6.0	147.0
DHO-430	430	442.0	+1.00	7.20	6.00	7.00	-0.15	450.0		26.2	26.0	6.0	1,440.00	18.0	1,446.0	1,369.0	6.0	144.0
DHO-440	440	452.0	+1.00	7.20	6.00	7.00	-0.15	460.0		26.2	26.0	6.0	1,470.00	18.0	1,418.0	1,401.0	6.0	141.0

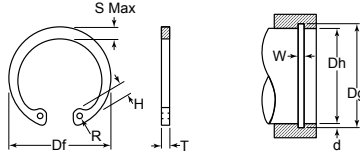
AXIALLY INSTALLED

HUYETT.COM • 785-392-3017



INTERNAL – BASIC METRIC

DIN 472



HOW TO IDENTIFY

1. Verify internal design and appearance.
2. Measure the housing diameter (Dh).
3. Measure the ring cross section (S Max).
4. Measure the ring thickness (T).
5. Find the part in the chart.

Item #	Housing Dia. (mm)	Groove Size				Ring Size & Weight								Supplementary Data				
		Diameter		Width	Depth	Thickness ²		Free Diameter		Lug Hgt.	Max. Sect.	Hole Dia.	Weight	Edge Margin	Thrust Load Ring	Thrust Load Groove	Allowable Radii/ Chamfers	Max. Load w/ R Max. or Ch Max.
		Dh	Dg			Tol.	W Min.	d	T									
DHO-450	450	462.0	+1.00	7.20	6.00	7.00	-0.15	470.0	+2.00/ -1.00	26.2	26.0	6.0	1,510.00	18.0	1,388.0	1,431.0	6.0	138.0
DHO-460	460	472.0	+1.00	7.20	6.00	7.00	-0.15	480.0		26.2	26.0	6.0	1,550.00	18.0	1,360.0	1,464.0	6.0	135.0
DHO-470	470	482.0	+1.00	7.20	6.00	7.00	-0.15	490.0		26.2	26.0	6.0	1,595.00	18.0	1,330.0	1,495.0	6.0	132.0
DHO-480	480	492.0	+1.00	7.20	6.00	7.00	-0.15	500.0		26.2	26.0	6.0	1,640.00	18.0	1,306.0	1,526.0	6.0	130.0
DHO-490	490	502.0	+1.00	7.20	6.00	7.00	-0.15	510.0		26.2	26.0	6.0	1,685.00	18.0	1,280.0	1,558.0	6.0	127.0
DHO-500	500	512.0	+1.00	7.20	6.00	7.00	-0.15	520.0	+3.00/ -1.50	26.2	26.0	6.0	1,730.00	18.0	1,256.0	1,588.0	6.0	125.0
DHO-510	510	524.0	+1.00	8.20	7.00	8.00	-0.15	535.0		26.2	26.0	6.0	2,250.00	21.0	1,834.0	1,894.0	7.0	156.0
DHO-520	520	534.0	+1.00	8.20	7.00	8.00	-0.15	545.0		26.2	26.0	6.0	2,290.00	21.0	1,802.0	1,931.0	7.0	153.0
DHO-530	530	544.0	+1.00	8.20	7.00	8.00	-0.15	555.0		26.2	26.0	6.0	2,335.00	21.0	1,768.0	1,968.0	7.0	150.0
DHO-540	540	554.0	+1.00	8.20	7.00	8.00	-0.15	565.0		26.2	26.0	6.0	2,380.00	21.0	1,738.0	2,004.0	7.0	148.0
DHO-550	550	564.0	+1.00	8.20	7.00	8.00	-0.15	575.0		26.2	26.0	6.0	2,430.00	21.0	1,711.0	2,041.0	7.0	145.0
DHO-560	560	574.0	+1.00	8.20	7.00	8.00	-0.15	585.0		26.2	26.0	6.0	2,495.00	21.0	1,682.0	2,078.0	7.0	143.0
DHO-570	570	584.0	+1.00	8.20	7.00	8.00	-0.15	595.0		26.2	26.0	6.0	2,560.00	21.0	1,650.0	2,114.0	7.0	141.0
DHO-580	580	594.0	+1.00	8.20	7.00	8.00	-0.15	605.0		26.2	26.0	6.0	2,625.00	21.0	1,627.0	2,151.0	7.0	138.0
DHO-590	590	604.0	+1.00	8.20	7.00	8.00	-0.15	615.0		26.2	26.0	6.0	2,700.00	21.0	1,601.0	2,188.0	7.0	136.0
DHO-600	600	614.0	+1.00	8.20	7.00	8.00	-0.15	625.0	+4.00/ -2.00	26.2	26.0	6.0	2,770.00	21.0	1,571.0	2,221.0	7.0	134.0
DHO-650	650	666.0	+1.00	9.30	8.00	9.00	-0.20	680.0		34.0	34.0	6.0	3,600.00	24.0	2,654.0	2,753.0	7.0	226.0
DHO-700†	700	716.0	+1.00	9.30	8.00	9.00	-0.20	730.0		34.0	34.0	6.0	4,120.00	24.0	2,471.0	2,966.0	7.0	210.0
DHO-750†	750	768.0	+1.00	9.30	9.00	9.00	-0.20	785.0		34.0	34.0	9.0	4,540.00	27.0	2,310.0	3,566.0	7.0	196.0
DHO-800†	800	818.0	+1.00	9.30	9.00	9.00	-0.20	835.0		34.0	34.0	9.0	5,450.00	27.0	2,176.0	3,800.0	7.0	184.0
DHO-850†	850	870.0	+1.00	9.30	10.00	9.00	-0.20	890.0		34.0	34.0	9.0	5,990.00	30.0	2,045.0	4,500.0	7.0	173.0
DHO-900†	900	920.0	+1.00	9.30	10.00	9.00	-0.20	940.0		34.0	34.0	9.0	6,740.00	30.0	1,938.0	4,766.0	7.0	164.0
DHO-950†	950	972.0	+1.00	9.30	11.00	9.00	-0.20	1,000.0		34.0	34.0	9.0	7,930.00	33.0	1,840.0	5,608.0	7.0	156.0
DHO-1000†	1,000	1,022.0	+1.00	9.30	11.00	9.00	-0.20	1,050.0		34.0	34.0	9.0	8,880.00	33.0	1,752.0	5,825.0	7.0	148.0

TO ORDER DIFFERENT MATERIAL/FINISHES,
APPEND SUFFIX WITH YOUR CHOICE:
"NONE" • -SS • -ZD • -Z3

All dimensions in millimeters.

- ² For plated rings add 0.05 mm to the listed maximum thickness. Maximum ring thickness will be a minimum of 0.005 mm less than the listed groove width (W) minimum.
- † These parts are made with a constant section width (NO taper).

HARDNESS RANGES: DHO RINGS

Material	Size Range	Hardness				
		HV	HRC	Lower Scale*	15N	30N
(blank) Carbon Steel, (SAE 1060-1090)	8 – 22	470 – 580	47 – 54	66 – 72 HR30N	–	–
	23 – 48	470 – 580	47 – 54	–	–	–
	50 – 200	435 – 530	44 – 51	–	–	–
	202 – 300	390 – 470	40 – 47	–	–	–
	305 – 1000	370 – 415	38 – 43	–	–	–
-SS Stainless Steel, (PH 15-7 Mo)	8 – 22	435 – 530	44 – 51	63 – 69.5 HR30N	84 – 87.5	66 – 72
	23 – 1000	435 – 530	44 – 51	–	–	–
-SS Stainless Steel, (DIN 1.4122 X39CrMo17)	All	470 – 580	47 – 54	–	84 – 87.5	66 – 72

* Where applicable

FOR DETAILED SPECIFICATIONS AND TOLERANCES, VISIT HUYETT.COM.
Prices, materials, dimensions, tolerances, designs, and grades subject to change without notice. © 2022 Huyett