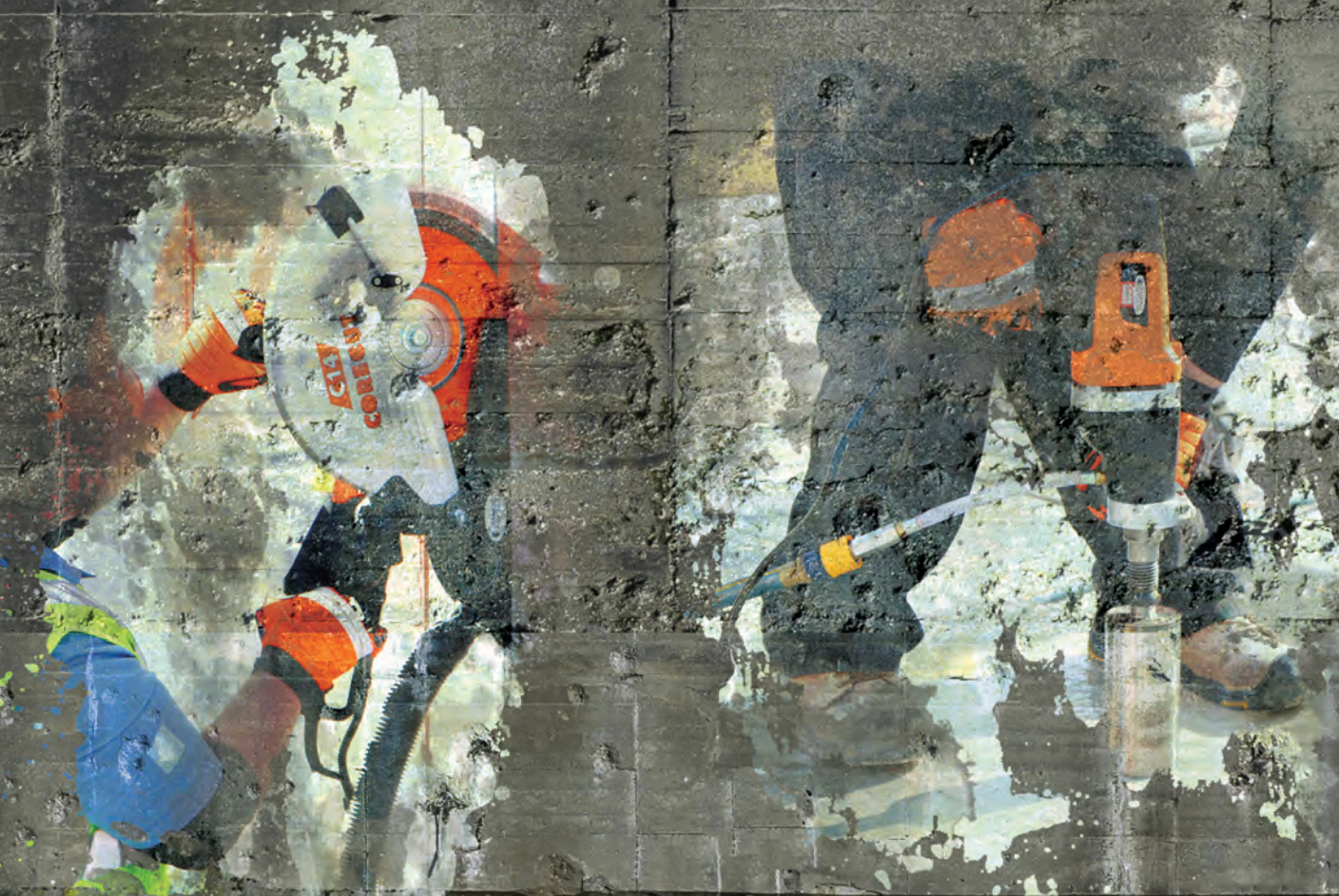


DIAMOND PRODUCTS DISTRIBUTOR BASICS BOOKLET



CORE CUT CORE BORE CORE PROP CORE VAC



Rev. January 2020



800-321-5336

Quality Is Choice

diamondproducts.com



GOOD

Delux-Cut

- Basic quality diamond and economical cutting value

Specifications:

- H8D - General purpose
- H10D - Asphalt, green concrete, brick and block (includes drop set wear protection)

H8D		
SIZE	CAT #	UPC #
10" x .110 x 1"	22856	603461228565
12" x .110 x 1"	70495	603461704953
14" x .125 x 1"	70499	603461704991
16" x .125 x 1"	20926	603461209267
H10D		
14" x .125 x 1"	50537	603461505376



BETTER

Star Blue

- Good quality diamond and good cutting value

Specifications:

- H8B - General purpose
- H10B - Asphalt, green concrete, brick and block

H8B		
SIZE	CAT #	UPC #
14" x .125 x UNV	85261	603461852616
16" x .125 x 1"	21424	603461214247
18" x .125 x 1"	63599	603461635998
H10B		
14" x .125 x 1"	14355	603461143554



BEST

Imperial Purple

- Better quality diamond and very good cutting life

Specifications:

- H8I - General purpose
- H10I - Asphalt, green concrete, brick and block

H8I		
SIZE	CAT #	UPC #
14" x .125 x UNV	78976	603461789769
16" x .125 x 1"	96480	603461964807
18" x .125 x 1"	34504	603461345040
H10I		
14" x .125 x UNV	15379	603461153799



PRO

Heavy Duty Orange MAXX

- Very high quality diamond and longer cutting life
- Diamond depth of .295" (7mm)
- Segment height of .395" (10mm)
- Heat isolation slots in segment for better cooling and faster cut

Specifications:

- H7H - Hard Aggregate concrete
- H8H - General purpose
- H10H - Asphalt, green concrete, brick and block

H7H		
SIZE	CAT #	UPC #
14" x .125 x UNV	53741	603461537414
H8H		
14" x .125 x UNV	53742	603461537421
16" x .125 x UNV	90185	603461901857
H10H		
14" x .125 x UNV	53743	603461537432



Cut-ALL Multi-Purpose Blades

- High speed blade with split segment design cuts cured and green concrete, brick and block, ductile iron and asphalt. Best suited for harder materials.
- Split segment for faster and more economical cutting.

Cut-ALL Multi-Purpose H8CA		
SIZE	H8CA Cat #	UPC #
12" x .125 x UNV	84967	603461849678
14" x .125 x UNV	84968	603461849685
16" x .125 x UNV	84969	603461849692
18" x .125 x 1"	86709	603461867092
Imperial Purple Cut-ALL H8ICA		
14" x .125 x UNV	15373	603461153737



Great for Metal

A2Z Vacuum Bonded Blades

- Vacuum bonded technology-diamonds are adhered to the core landing
- Great for rescue and emergency situations
- Cuts a wide range of materials

A2Z Vacuum Bonded Blade		
SIZE	T7AZ Cat #	UPC #
4-1/2" x .080 x 7/8"	21511	603461215114
7" x .095 x 7/8"	21531	603461215312
9" x .125 x 7/8"	18751	603461187510
14" x .125 x 1"	21571	603461215718
16" x .125 x 1"	21576	603461215763

*Includes 5/8" bushing

C14, C14PRO & C16 ELECTRIC HAND SAWS

14"/16" Blade Capacity **Electric**

Features & Benefits (Both models):

- Wet or dry cutting
- Overload protection with load warning LED light - visible to operator
- Electrical cord with PRCD protection
- Detachable guide rollers
- Splash guard to protect from water spray
- Handles designed for optimal control
- Lightweight magnesium adjustable blade guard
- Adjustable water feed system

C14



C14 & C16 HAND HELD ELECTRIC SAWS

Model #	Motor Power	Part #	Cat #	UPC #
C14 (14")	15A/120V	5801601	48975	603461489751
C14PRO (14")	25A/120V	5801620	74267	603461742672



C14 PRO



Vacuum Skid Plates

DESCRIPTION	Part #	CAT #	UPC #
C14 Vacuum Skid Plate	6078496	80698	603461806985
C16 Vacuum Skid Plate	6078502	05225	603461052252



C16



C16 with Flush Cut Flange and Removable Side Guard

Flush Cut Blades for C16

SIZE	Bond Spec	CAT #	UPC #
16" x .125 x LYFC	H7H	82549	603461825498
16" x .125 x LYFC	T7XL Turbo	82548	603461825481

C16 HAND HELD FLUSH CUT SAWS

Model #	Motor Power	Part #	Cat #	UPC #
C16 (16")	15A/120V	5801605	72378	603461723787



GOOD

Delux-Cut

- Basic quality diamond and economical cutting value

Specifications:

T7D - General purpose, fast cutting



BETTER

Star Blue

- Good quality diamond and good cutting value

Specifications:

T7B - General purpose, fast cutting



PRO

T-Seg Premium

- Better quality diamond in general concrete with core protection during fast cutting
- TS7P - General purpose, fast cutting

Delux-Cut Turbo		
SIZE	Cat #	UPC #
4" x .080 x 7/8"	21124	603461211246
4-1/2" x .080 x 7/8"	21134	603461211345
6" x .080 x 7/8"	21141	603461211413
7" x .095 x 7/8"	21163	603461211635
10" x .110 x 1"	21204	603461212045
12" x .125 x 1"	21205	603461212052
14" x .125 x 1"	21212	603461212120

Star Blue Turbo		
SIZE	T7B Cat #	UPC #
4" x .080 x 7/8"	74959	603461749596
4-1/2" x .080 x 7/8"	74960	603461749602
7" x .095 x 7/8"	74961	603461749619
9" x .095 x 7/8"	80005	603461800051

T-Seg Premium Turbo		
SIZE	TS7P Cat #	UPC #
4" x .080 x 7/8"	73958	603461739580
4-1/2" x .080 x 7/8"	73959	603461739597
7" x .095 x 7/8"	73962	603461739627
9" x .095 x 7/8"	73965	603461739658
12" x .125 x 1"	74610	603461746106
14" x .125 x 1"	74612	603461746120



GOOD

X-Turbo Blade

- Unique turbo core with enhanced air holes to keep the blade cool at high speeds
- Includes a full radius drop segment for enhanced blade life.

T7X - General purpose, super fast cutting in multiple applications

X-Turbo Blades		
SIZE	T7X Cat #	UPC #
14" x .125 x 1"	63760	603461637602
16" x .125 x 1"	63763	603461637633
20" x .125 x 1"	63764	603461637640



BETTER

XL-Turbo Blade

- Unique turbo core with even more air holes to keep the blade cool at higher speeds

T7XL - General purpose, super fast cutting

XL-Turbo Blades		
SIZE	T7XL Cat #	UPC #
14" x .125 x 1"	19312	603461193122
16" x .125 x 1"	20161	603461201612
20" x .125 x 1"	20183	603461201834



BEST

XXXL-Turbo Blade

- Three different segments for longer life, faster cutting and reliable performance

T7XL3 - General purpose, super fast cutting

Triple-XL Turbo Blades		
SIZE	T7XL3 Cat #	UPC #
14" x .125 x 1"	42891	603461428910
16" x .125 x 1"	42892	603461428927
20" x .125 x 1"	42893	603461428934



Tyrolit BASIC Heavy Duty High Speed Gas & Portable Saw Wheels for Steel-Type 1



- Aluminum oxide grain
- Designed for all ferrous metals
- A free cutting wheel with exceptional cut rate and very good life
- Triple-reinforced for stability and safety

UNIVERSAL ARBOR

SIZE	Specification	Cat #	UPC #	Unit Pkg. Qty.
14" x 1/8" x UNV	A30P/100	51567	603461515672	10



Tyrolit BASIC Heavy Duty High Speed Gas & Portable Saw Wheels for Ductile/Cast Iron & Asphalt-Type 1

- Aluminum oxide/silicon carbide blend
- Designed for ductile pipe, asphalt and cast iron
- Exceptional cut rate and life
- Triple-reinforced for stability and safety

SIZE	Specification	Cat #	UPC #	Unit Pkg. Qty.
14" x 1/8" x UNV	AC24100	51568	603461515689	10



Tyrolit BASIC Heavy Duty High Speed Gas & Portable Saw Wheels for Masonry & Concrete-Type 1

- Silicon carbide grain
- Designed for cutting concrete, masonry, stone, brick and PVC pipe
- Exceptional cut rate and very long life
- Triple-reinforced for stability and safety

SIZE	Specification	Cat #	UPC #	Unit Pkg. Qty.
14" x 1/8" x UNV	1C24/100	51573	603461515733	10



Tyrolit BASIC Chop Saw Wheels for Steel Type 1



Tyrolit BASIC Super Thin Wheels for INOX, Steel & Stainless Steel Type 1



Tyrolit BASIC 2 in 1 Wheels Type 27



Zec® and Semi-Flexible Grinding Discs for Concrete/Masonry



Tyrolit BASIC 2 in 1 Zirconia Flap Discs for Steel and Stainless Steel-Type 29

Tyrolit BASIC Chop Saw Wheels for Steel - Type 1						
SIZE	Specification	Max RPM	Material #	Cat #	UPC #	Unit Pkg. Qty.
14" x 7/64" x 1"	A36BF	4400	34301893	93890	603461938907	10
14" x 3/32" x 1"	A36BF	4400	34301891	79442	603461794428	10
Tyrolit BASIC Super Thin Wheels for INOX, Steel & Stainless Steel - Type 1						
4-1/2" x .040 x 7/8"	WA60-BF	13280	396110	47413	603461474139	25
4-1/2" x .060 x 7/8"	WA60-BF	13280	222899	10001	603461100014	25
6" x .045 x 7/8"	A46Q-BF	10200	34331611	44552	603461445528	25
Tyrolit BASIC 2 in 1 Wheels - Type 27						
4-1/2" x 1/4" x 5/8"-11	A30BF	13280	34301924	50020	603461500203	10
7" x 1/4" x 5/8"-11	A30BF	8600	34301958	79140	603461791403	10
Zec® and Semi-Flexible Grinding Discs for Concrete/Masonry						
4-1/2" x 7/8"	16-Grit Silicon	13280	SCGD4500	58155	603461581554	5
7" x 7/8"	16-Grit Silicon	8600	SCGD7000	58154	603461581547	5
Tyrolit BASIC 2 in 1 Zirconia Flap Discs for Steel and Stainless Steel-Type 29						
4-1/2" x 7/8"	ZA60-B	13280	34335388	94146	603461941464	10



Right Angle Grinder



Electric Circular Saw



Type 1



Type 29



WET

GOOD

Star Blue Wet Core Bore

BOL-General purpose, cured concrete and hard materials



WET

BETTER

Heavy Duty Orange Wet Core Bore

Excellent footage and drilling speed. Designed for all types of wet drilling in applications with light to moderate steel

Very high quality diamond and longer coring life.

HOL- General Purpose, Longer Life

Star Blue Wet Core Bore Bits		
SIZE	BOL Cat #	UPC #
1"	09978	603461099783
1-1/4"	09981	603461099813
1-1/2"	09989	603461099899
2"	10028	603461100281
2-1/2"	10031	603461100311
3"	10041	603461100410
3-1/2"	10055	603461100557

Star Blue Wet Core Bore Bits		
SIZE	BOL Cat #	UPC #
4"	10057	603461100571
4-1/4"	10072	603461100724
4-1/2"	10074	603461100748
5"	10083	603461100830
6"	10084	603461100847
8"	10103	603461101035
10"	10173	603461101738

Heavy Duty Orange Wet Core Bore Bits		
SIZE	HOL Cat #	UPC #
1"	04812	603461048125
1-1/8"	04837	603461048378
1-1/4"	15509	603461155090
1-1/2"	15525	603461155250
2"	15479	603461154796
2-1/4"	04959	603461049597
2-1/2"	00004	603461000048
3"	00005	603461000055
3-1/2"	00006	603461000062

Heavy Duty Orange Wet Core Bore Bits		
SIZE	HOL Cat #	UPC #
4"	00007	603461000079
4-1/2"	00008	603461000086
5"	00009	603461000093
5-1/2"	05867	603461058674
6"	00010	603461000109
6-1/2"	05927	603461059275
8"	05183	603461051835
10"	04822	603461048224
12"	04853	603461048530
14"	04882	603461048822



DRY

Star Blue

Good quality diamond and good coring value

DB-Block and soft brick-not for use on concrete



Star Blue Dry Hole Saw		
SIZE	DB Cat #	UPC #
1"	35385	603461353854
1-1/4"	35390	603461353908
1-1/2"	35392	603461353922
2"	35406	603461354066
2-1/2"	35440	603461354400

Star Blue Dry Hole Saw		
SIZE	DB Cat #	UPC #
3"	35444	603461354448
3-1/2"	35452	603461354523
4"	35453	603461354530
4-1/2"	35459	603461354592
5"	35478	603461354783
6"	35479	603461354790



DRY

Heavy Duty Orange Very high quality diamond and longer coring life

DH-Block and soft brick-not for use on concrete

Heavy Duty Orange Dry Hole Saw		
SIZE	DH Cat #	UPC #
7/8"	04771	603461047715
1"	04706	603461047067
1-1/4"	04711	603461047111
1-1/2"	04717	603461047173
1-3/4"	04720	603461047203
2"	00011	603461000116
2-1/4"	04727	603461047272

Heavy Duty Orange Dry Hole Saw		
SIZE	DH Cat #	UPC #
2-1/2"	00012	603461000123
3"	00013	603461000130
3-1/2"	00014	603461000147
4"	04745	603461047456
4-1/2"	04751	603461047517
5"	04756	603461047562
6"	04764	603461047647



WET

Premium Black Wet Core Bore Bit

Very High diamond concentration gives maximum footage and drilling speed in all types of wet drilling applications.

Good in moderate to high steel applications. Highest quality diamond and longest coring life

POL- General Purpose, Longest Life - for the pro driller

PRO



Premium Black Wet Core Bits		
SIZE	POL Cat #	UPC #
7/8"	06004	603461060042
1"	05293	603461053931
1-1/8"	05338	603461053389
1-1/4"	05381	603461053815
1-1/2"	05441	603461054416
2"	05529	603461055291
2-1/2"	05607	603461056076
3"	05661	603461056618
3-1/2"	05709	603461057097
4"	05761	603461057615
4-1/2"	05805	603461058056
5"	05843	603461058438
5-1/2"	05867	603461058674
6"	05892	603461058926
6-1/2"	05927	603461059275
8"	05984	603461059848
10"	05306	603461053068
12"	05361	603461053617
14"	05417	603461054171

M-1 Complete Core Rigs

Standard 10" Bit Capacity (Milwaukee)
Standard 14" Bit Capacity (CB733) 16" with spacer

Electric

Features & Benefits

- 2-1/2" square column (mast) with black oxidized finish
- 6" wheels for easy mobility
- Vacuum pump for quick mounting to flat surface without drilling an anchor hole
- Slide handle allows for drilling in tight areas
- Combination base is a quick change over from vacuum to anchor base



10" Bit Capacity without spacers

14" Bit Capacity without spacers

Bit not included
CB733 model does not need control panel - not included

M-1 RIG ACCESSORIES

Description	Part #	Cat #	UPC #
M-1 Spacer Block	4400072	01924	603461019248
1015 Adapter - 1.250"-7F to 5/8"-11M	4400008	01878	603461018784
125-12 Extension	4400006	01873	603461018739

M-1 COMPLETE CORE RIGS

Motor	Model #	Power	Combo Rig Part #	Cat #	RPM	UPC #	Product Weight (lbs.)
Core Bore CB733	M1C-20-CB733WO	20 amp	4245115	39317	345/630/1000	603461393171	134
Milwaukee 4096	M1C-20-MW4096V	20 amp	4245059	01794	450/900	603461017947	129

GOOD



CB515

3" Bit Capacity

Electric

Features & Benefits:

- 1800 Watt, 115 volt electric
- 2-speed gear box (1400 rpm and 2300 rpm) with slip clutch
- Side handle for stable coring
- 1.250-7 threaded spindle with 5/8"-11 adapter
- Water hose connection for wet drilling
- PRCD/GFCI Class I cord
- Works with M-4 stand and hand held motor mounts

PRO



DK12 (Wet)

DK13 (Wet/Dry)

WEKA DK12 & DK13

3" Bit Capacity

Electric

Features & Benefits:

- Thermal overload protection
- Side handle for stability
- Water connection for wet coring DK12 & DK13) or dry vacuum port (DK13 only)
- Carrying case and spindle wrench

HAND HELD MOTORS

Motor/Model #	Power	Part #	Cat #	RPM	UPC #	Product Weight (lbs.)
CB515 (WET/DRY)	115V	4244128	98794	1400/2300	603461987943	10.5
Weka DK12 (WET)	14	4244017	01738	970/2330/4400	603461017381	25
Weka DK13 (WET/DRY)	14	4244062	47055	970/2330/4400	603461470551	25

M-4

6" Bit Capacity, 3" (hand held)

Features & Benefits:

- Reversible slide handle (for use on left or right side)
- Top carrying handle
- Quick release motor mount
- 4 Leveling screws on base
- RPM: 970/2330/4400



Bit not included

M1AA-15

6" Bit Capacity

Features & Benefits

- Spring loaded slide handle for easy coring
- Convenient carrying handle on carriage
- Easy to use for standard hole drilling
- Trap ring keeps water contained
- Single speed - 800 RPM



Bit not included

SMALL COMBINATION DRILL RIGS

Model #	Motor	Part #	Cat #	UPC #	Product Weight (lbs.)
M4C-14-DK12-V	14 Amp Weka DK12	4240001	00020	603461000208	74
M1AA-15	15 amp Core Bore	4220050	85986	603461859868	35

M-4 Angle Stand Only (for CB515 & DK12 motors - 4240020 (Cat # 01680) UPC # 60346116803



For use on circular saws and side grinders

Delux-Cut

- Basic quality diamond and economical cutting value
- E2D - General purpose concrete

GOOD



Star Blue

- Basic quality diamond and good cutting value
- E2B - General purpose concrete

BETTER

Delux-Cut		
SIZE	E2D Cat #	UPC #
4" x .080 x 7/8"	20966	603461209663
4-1/2" x .080 x 7/8"	21002	603461210027
6" x .080 x 7/8"	22783	603461227834
7" x .080 x 7/8"	22785	603461227858
9" x .080 x 7/8"	22820	603461228206

Star Blue		
SIZE	E2B Cat #	UPC #
4" x .070 x 7/8"	74950	603461749503
4-1/2" x .070 x 7/8"	74951	603461749510
7" x .080 x 7/8"	74952	603461749527
9" x .080 x 7/8"	70494	603461704946
4-1/2" x .250 tuck point	74967	603461749671

Delux-Cut Single & Double Row

- Basic quality diamond and economical grinding value
- S5D - General concrete grinding and removal
- D5D - General purpose grinding, aggressive removal - long life



Delux-Cut Segmented Cup Grinders		
SIZE	S5D Cat #	UPC #
4" x 5/8-11 Single Row	22405	603461224055
7" x 5/8-11 Single Row	22408	603461224086
SIZE	D5D Cat #	UPC #
4-1/2" x 5/8-11 Double Row	22415	603461224154
7" x 5/8-11 Double Row	22418	603461224185



For use right angle grinders

Star Blue Single & Double Row

- Basic quality diamond and economical grinding value
- S5B - General concrete grinding and removal
- D5B - General purpose grinding, aggressive removal - long life



Star Blue Segmented Cup Grinders		
SIZE	S5B Cat #	UPC #
4" x 5/8-11 Single Row	77383	603461773836
7" x 5/8-11 Single Row	77542	603461775427
SIZE	D5B Cat #	UPC #
4-1/2" x 5/8-11 Double Row	70360	603461703604
7" x 5/8-11 Double Row	70391	603461703918

Delux-Cut Spiral Turbo

- Spiral turbo for a fast grind
- T5D - General concrete grinding and removal



Delux-Cut Spiral Turbo Cup Grinders		
SIZE	T5D Cat#	UPC #
4" x 5/8"-11 (10 seg)	22419	603461224192
7" x 5/8"-11 (12 seg)	22474	603461224741

Star Blue Spiral Turbo

- Spiral turbo for a fast grind
- T5B - General concrete grinding and removal



Star Blue Spiral Turbo Cup Grinders		
SIZE	T5B Cat#	UPC #
4" x 5/8-11 (10 seg)	00036	603461000369
7" x 5/8-11" (12 seg)	90193	603461901932



- Delux-Cut**
- Basic quality diamond and economical cutting value
 - TD2D - Dry/Wet tile cutting

GOOD

Delux-Cut Dry Tile		
SIZE	TD2D Cat #	UPC #
4" x .060 x 5/8"	20664	603461206648
4-1/2" x .060 x 5/8"	20675	603461206754
5" x .060 x 5/8"	20681	603461206815
7" x .060 x 5/8"	20721	603461207218
9" x .060 x 1"	68466	603461684668
10" x .060 x 5/8"	20751	603461207515



For use on wet or dry tile saws



- Star Blue**
- Good quality diamond and good cutting value
 - TD2B - Dry/Wet tile cutting

BETTER

Star Blue Dry Tile		
SIZE	TD2B Cat #	UPC #
4" x .060 x 5/8"	80012	603461800129
7" x .060 x 5/8"	80014	603461800143
8" x .060 x 5/8"	80015	603461800150
9" x .060 x 1"	68467	603461684675
10" x .060 x 5/8"	80016	603461800167

CC912TS Tile Saw

9" Capacity (1" arbor)

Electric



Features & Benefits:

- 1-7/8" cutting depth
- Max cutting depth at 45 degrees -1-7/16"
- Heavy duty table with measure guide
- Quick-release, tool-free table mount release for easy cleaning and blade replacement

Table Size: 25" width x 20.5" length

CC912TS TILE SAW					
Model #	Motor Make	Motor Power	Part #	Cat #	UPC #
CC912TS	CORE BORE	120V 800 Watt	5801608	46904	603461469043

CC900TE Tile Saw

10" Capacity (5/8" arbor)

Electric



Blade included!



Features & Benefits:

- 3-3/4" cutting depth
- 1-1/2 HP, 15amp, 115V high torque motor
- Rip cut up to 20", diagonal cut to 14"
- Includes 45° and 90° rip guide/miter block

CC900TE TILE SAW					
Model #	Motor Make	Motor Power	Part #	Cat #	UPC #
CC900TE	Baldor®	1-1/2 HP	5800559PKG	65020	603461650205
TILE SAW STANDS					
CC900TE TILE SAW STAND			6043528	03734	603461037341

CC300M Masonry Saw

14" Capacity

Electric



Features/Benefits:

- Cuts 5" deep with 14" blade
- Powerful 2 HP electric motor
- Includes 2 spare air filters

* Blade not included

CC300M MASONRY SAW				
Model #	Motor Power	Part #	Cat #	UPC #
CC300M	2 HP - 115 Volt 15 amp	5800730	84807	603461848077
CC300M MASONRY SAW STAND				
Description	Part #	Cat #	UPC #	
CC300M Stand	6043056	84808	603461848084	

CC500MXLII Masonry Saw

14" Capacity

Electric



Features/Benefits:

- Stay level blade guard
- Removable cutting head
- Side carrying handles
- Open back cutting
- Includes water pump
- Stand sold separately

* Blade not included

CC515MXL2E1 MASONRY SAW				
Model #	Motor Power	Part #	Cat #	UPC #
CC515MXL2E1	Baldor® 1.5HP Electric 1PH, 115V	5800799	03725	603461037259
CC515MXL2E1M MASONRY SAW STAND				
Description	Part #	Cat #	UPC #	
CC500M Stand	2500839	46870	603461468701	



Star Blue

- Dry walk behind sawing
- Good quality diamond and good cutting value

SPECIFICATIONS:

- DC1B** - Concrete dry
- DA2B** - Asphalt dry



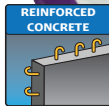
For use on low HP walk behind saws <20hp

Star Blue Dry Walk Behind		
SIZE	Cat #	UPC #
DC1B - CONCRETE		
14" x .125 x 1"	70426	603461704267
18" x .125 x 1"	83679	603461836791
DA2B - ASPHALT		
14" x .125 x 1"	70422	603461704229
18" x .125 x 1"	83678	603461836784



Imperial Purple for Concrete

- .394" Diamond Depth
- Economical blades that work well for contractors who don't have a heavy volume of cutting to do.
- Basic quality diamond and economical cutting value.



MEDIUM AGGREGATE
Imperial Purple Specifications for Light to Medium Reinforced Concrete
C2650I

IMPERIAL PURPLE WET CURED BLADES			
SIZE	PART #	CAT #	UPC #
14" x .125	CI14125M	36800	603461368001
16" x .125	CI16125M	36808	603461368087
18" x .125	CI18125M	36809	603461368094
20" x .140	CI20140M	36811	603461368117
24" x .155	CI24155M	36814	603461368148
26" x .155	CI26155M	36815	603461368155



Imperial Purple for Asphalt

- .312" Diamond Depth
- Delivers the speed and convenience of a diamond blade compared with abrasive blades that require frequent blade changes.
- Basic quality diamond and economical cutting value



MEDIUM AGGREGATE ASPHALT/ GREEN CONCRETE
Imperial Purple Specification
A6000I

IMPERIAL PURPLE ASPHALT/GREEN CONCRETE/ ASPHALT OVER CONCRETE WET BLADES			
SIZE	PART #	CAT #	UPC #
14" x .140	AI14140XM	36821	603461368216
18" x .140	AI18140XM	36822	603461368223
20" x .140	AI20140XM	36823	603461368230
24" x .155	AI24155XM	36824	603461368247
26" x .165	AI26165XM	36825	603461368254



Heavy Duty Orange

- .250" Diamond Depth
- Fast cutting blade that works well with a wide variety of high or low HP saws.
- Combines long life performance while maximizing your blade dollars.

SPECIFICATIONS:

- C52HXM** - Medium hard aggregate with moderate steel
- AC62DWHXM** - Asphalt over concrete medium aggregate
- A606HXM** - Asphalt with medium aggregate



HEAVY DUTY ORANGE WALK BEHIND BLADES		
SIZE	Cat #	UPC #
C52HXM - CURED CONCRETE - HARD AGGREGATE		
14" x .125	35386	603461353861
18" x .125	15386	603461153867
26" x .155	53163	603461531634
30" x .175	32849	603461328494
C56HM - CURED CONCRETE - MED AGGREGATE		
14" x .125	07583	603461075831
18" x .125	07673	603461076739
AC62DWHXM - ASPHALT OVER CONCRETE		
14" x .125	40274	603461402743
18" x .125	39012	603461390125
26" x .155	42068	603461420686
30" x .175	39752	603461397520
A606HXM - ASPHALT		
14" x .125	15066	603461150668
18" x .125	19336	603461193368
26" x .155	25563	603461255639
30" x .175	43394	603461433945

CCE0900 Specifications

Max Depth (20"): 7-5/8"
 Blade Shaft RPM: 2,600
 Arbor Size: 1" w/DPH
 Raise/Lower: Screw feed



GOOD

20" Blade Capacity Gasoline

CCE0900 Features

- Light weight and portable
- Easy to read built-in depth indicator
- Water tank included

CC1200XL Specifications

Max Depth (14"): 4-5/8"
 Max Depth (18"): 6-5/8"
 Blade Shaft RPM: 2,600
 Arbor Size: 1" w/DPH
 Raise/Lower: Screw feed



BETTER

14" & 18" Blade Capacity Gasoline

CC1200XL Features

- Heavy duty design, but light weight
- Easy to read built-in depth indicator
- Heavy duty handles do not rattle

CC1300XL Specifications

Max Depth (14"): 4-5/8"
 Max Depth (18"): 6-5/8"
 Blade Shaft RPM: 2,600
 Arbor Size: 1" w/DPH
 Raise/Lower: Screw feed



BEST

14"-20" Blade Capacity Gasoline

CC1300XL Features

- Heavy duty frame design
- Four position heavy duty handles
- Solid sealed and self aligning blade shaft bearings
- Left or right side sawing

CCE0900, CC1200XL & CC1300XL WALK BEHIND SAWS

Saw Model #	Engine Make	Engine/Motor Model	Engine/Motor Power	Blade Capacity	Part #	Cat #	UPC #	Product Weight (lbs)
CCE0911H-20	Honda®	GX390	11.7 HP, 19.5 Torque (lbs.-ft.)	20"	5801613	30396	603461303965	275
CC1211HXL-18	Honda®	GX390	11.7 HP, 19.5 Torque (lbs.-ft.)	18"	5801097	32453	603461324533	285
CC1213BXL-18	Briggs®	2100	13 HP 420cc, 21 Torque (lbs.-ft.)	18"	5801098	32454	603461324540	290
CC1311HXL-18	Honda®	GX390	11.7 HP, 19.5 Torque (lbs.-ft.)	18"	5800571	69995	603461699952	260
CC1313BXL-18	Briggs®	2100	13 HP 420cc, 21 Torque (lbs.-ft.)	18"	5801116	61494	603461614948	265



CC1820HXL-S-20 Saw

14"-20" Blade Capacity Gasoline * Blade not included

Features & Benefits:

- Electric start option
- Self propelled drive
- Easy access to battery
- Screw feed raise and lower
- Left or right side sawing
- Lifting hook standard on all models
- Self aligning blade shaft bearings

Specifications

Max Depth (20"): 7-5/8"
 Blade Shaft RPM: 2,600
 Arbor Size: 1" w/DPH
 Raise/Lower: Screw feed
 Transmission: Eaton 10
 Drive Speed: 0-80 fpm

CC3500-30 Saws

14"-30" Blade Capacity Gasoline * Blade not included

Features & Benefits:

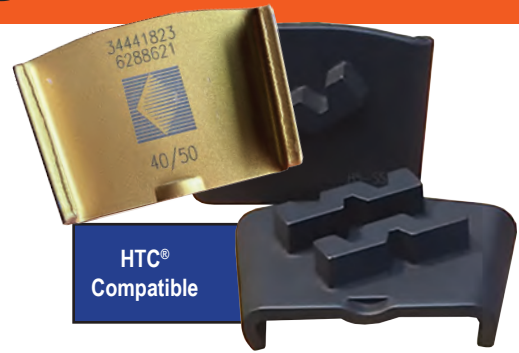
- Great mid-size saw for service, utility work and rental
- Briggs-Vanguard or Kohler engine options
- Easy to maneuver self propelled drive
- Strongest frame on the market
- Fits through a 30" door frame
- Cyclone 4-stage air cleaner

Specifications

Max Depth (30"): 12-3/8"
 Blade Shaft RPM: 2,600
 Arbor Size: 1" w/DPH
 Raise/Lower: Hyr Pump
 Transmission: Eaton 10
 Drive Speed: 0-200 fpm

CC1800XL & CC3500 WALK BEHIND SAWS

Saw Model #	Engine Make	Engine/Motor Model	Engine/Motor Power	Blade Capacity	Part #	Cat #	UPC #	Product Weight (lbs)
CC1820HXL-S-20	Honda®	GX630	20.8 HP, 35.6 Torque (lbs.ft.)	20"	5800668	53351	603461533515	470
CC3535JBV-30	Briggs®	Vanguard	35 HP	30"	5801308	25337	603461253376	1,065
CC3537JK-30	Kohler®	Command	37 HP (55.3 torque)	30"	5801304	25322	603461253222	1,040



Diamond Segmented Grinding Shoes

- Good diamond quality for aggressive removal
- Used in sets of three and available in single or double segments
- For use on floor grinding heads on walk behind machines

ALSO AVAILABLE - Ask About Our Diamond Segmented Grinding Segments for HTC® Machines

SINGLE Segment Grinding Shoe Soft Concrete				
Grit	UPC #	Part #	Cat # (each)	
25	603461690225	GSS1025	69022	
40	603461691024	GSS1040	69102	
80	603461691919	GSS1080	69191	
150	603461691932	GSS1150	69193	

DOUBLE Segment Grinding Shoe Soft Concrete				
Grit	UPC #	Part #	Cat # (each)	
25	603461693455	GSD1025	69345	
40	603461693912	GSD1040	69391	
80	603461694094	GSD1080	69409	
150	603461694261	GSD1150	69426	

SINGLE Segment Grinding Shoe Hard Concrete				
Grit	UPC #	Part #	Cat # (each)	
16	603461729642	GHS3016	72964	
25	603461738200	GHS3025	73820	
40	603461755634	GHS3040	75563	
80	603461764490	GHS3080	76449	
150	603461782562	GHS3150	78256	

DOUBLE Segment Grinding Shoe Hard Concrete				
Grit	UPC #	Part #	Cat # (each)	
16	603461784634	GHD3016	78463	
25	603461814256	GHD3025	81425	
40	603461889186	GHD3040	88918	
80	603461911740	GHD3080	91174	
150	603461927987	GHD3150	92798	

SINGLE Segment Grinding Shoe Medium Concrete				
Grit	UPC #	Part #	Cat # (each)	
16	603461694292	GMS2016	69429	
25	603461694629	GMS2025	69462	
40	603461701693	GMS2040	70169	
80	603461698184	GMS2080	69818	
150	603461702416	GMS2150	70241	

DOUBLE Segment Grinding Shoe Medium Concrete				
Grit	UPC #	Part #	Cat # (each)	
25	603461702492	GMD2025	70249	
40	603461706100	GMD2040	70610	
80	603461708104	GMD2080	70810	
150	603461710213	GMD2150	71021	

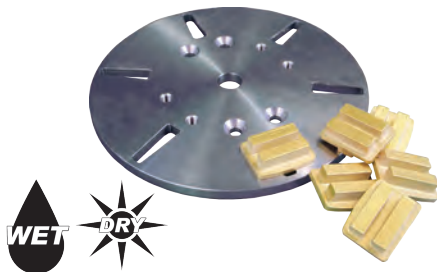
SINGLE Segment Grinding Shoe Extremely Hard Concrete				
Grit	UPC #	Part #	Cat # (each)	
25	603461001649	GXS4025	00164	
40	603461031806	GXS4040	03180	
80	603461123907	GXS4080	12390	
150	603461162012	GXS4150	16201	

DOUBLE Segment Grinding Shoe Extremely Hard Concrete				
Grit	UPC #	Part #	Cat # (each)	
25	603461258395	GXD4025	25839	
40	603461300438	GXD4040	30043	
80	603461303095	GXD4080	30309	
150	603461304856	GXD4150	30485	

COLOR CODES:



Diamond Grinding Shoes Sold in Quantities of Three and Arrive in Plastic Sleeves



Plates for Grinding Shoes					
Size (Diameter)	Number of Shoes	Fits Machine	UPC #	Part #	Cat #
8"	4	CPG80E, Diteq®	603461054072	GP8000	05407
10"	6	CPG100 & CPG200, Target, Husqvarna®, EDco®	603461054096	GP10000	05409
12"	6	CPG200	603461054195	GP12000	05419



8" grinding head included
Cat # 03330

CPG80E Single Head Floor Grinder

8" Head Capacity **Electric**

Features:

- 2 HP Baldor - 1PH, 115V, 16 amp motor
- Includes 8" grinding head
- Remove paint, epoxy and rough spots
- Slurry skirt keeps the machine on the grinding surface
- 2800 rpm grinding head speed
- Includes 50ft, 12 gauge extension cord



8" PCD grinding head for epoxy: Cat # 13406, UPC # 603461134064

CPG80E SINGLE HEAD LOW PROFILE FLOOR GRINDER

Model #	Engine/Motor Type/df	UPC #	Part #	Cat #	Head Capacity	Product Weight (lbs.)
CP82E1-8	2HP - 1PH - *115V or 230V Baldor® Electric	603461150729	5800989PKG	15072	8"	120



CPG100 Single Head Floor Grinder

10"/12" Head Capacity **Gasoline** **Electric**

- 2" dust port opening
- Single grease point
- Adjustable operator handles
- Adjustable wheel location for added grinding strength
- Single head for fast, aggressive grinding
- Greasing points are easily accessible
- Electric models include starter box
- Includes 50 pound weight that maintains surface pressure

CPG100 SINGLE HEAD FLOOR GRINDER

Model #	Engine/Motor Make	Engine/Motor Power	Power Source	UPC #	Part #	Cat #	Product Weight (lbs)
CPG102E1	Baldor®	2 HP-1PH, 115V or 230V	Electric	603461132275	5800727	13227	370
CPG110H	Honda® GXV390	10.2 HP	Gas	603461134200	5800726	13420	320



CPG200 Dual Head Floor Grinder

10"/12" Head Capacity **Gasoline** **Electric**

- 2" dust port opening
- Multiple grease points
- 1/4" thick steel box frame
- Adjustable operator handles
- Dual head allows large 24" grinding area with two 12" heads
- 4 rear axle positions and swivel axle
- Matches the height of the grinding head being used and allows for rapid change in weight distribution during grinding or transport
- Can use diamond grinding head, carbide blocks, grinding stones, and Core-Lock
- Includes 50 pound weight that maintains surface pressure

CPG200 DUAL HEAD FLOOR GRINDER

Model #	Engine/Motor Make	Engine/Motor Power	Power Source	UPC #	Part #	Cat #	Product Weight (lbs)
CPG210H	Honda® GXV390	10.2 HP	Gas	603461428743	5801238	42874	530
CPG202E1	Baldor®	2 HP-1PH, 115V or 230V	Electric	603461427659	5801235	42765	390



10" Heavy Duty Orange Grinding Heads

Material	10", 12 Seg	UPC	CAT #
Hard, Non-Abrasive	GSH12	603461113939	11393
Soft, Abrasive	GHH12	603461235921	23592
Material	10", 24 Seg	UPC	CAT #
Hard, Non-Abrasive	GSH24	603461114011	11401
Soft, Abrasive	GHH24	603461113984	11398

12" Heavy Duty Orange Grinding Heads

Material	12", 12 Seg	UPC	CAT #
Hard, Non-Abrasive	GSH12	603461697866	69786
Soft, Abrasive	GHH12	603461767583	76758
Material	12", 24 Seg	UPC	CAT #
Hard, Non-Abrasive	GSH24	603461395342	39534
Soft, Abrasive	GHH24	603461385411	38541

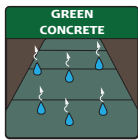


BASIC FIRST-CUT™ BLADES

800-321-5336



BASIC - GOOD QUALITY, LONG LIFE - Individual Blades - No Skid Plate



**FOR USE ON
FIRST-CUT™ OR
COMPETITOR
SAWS**

SIZE	BASIC1000 Cat #	BASIC2000 Cat #	BASIC3000 Cat #	BASIC4000 Cat #	BASIC5000 Cat #	BASIC6000 Cat #
4" x .080	70113	70114	70116	70117	70119	70120
6" x .100	63013	40544	40546	40547	63014	63016
8" x .100	63056	42938	42939	42943	63058	63063
8" x .125	63365	63371	63372	63373	63380	63381
10" x .110	63382	46593	46596	46599	63384	63388
10" x .250	63389	63390	63392	63396	63397	63404
12" x .125	63413	44970	44971	44974	63415	63416
12" x .250	63417	63419	63420	63421	63422	63423
13.5" x .125	63426	63427	63428	63429	63430	63437
13.5" x .250	63440	63441	63442	63446	63447	63449
14" x .125	63450	44976	44977	44978	63458	63464
14" x .250	63465	63466	63467	63468	63469	63470



**Packaged
with
Skid
Plate**

BASIC - GOOD QUALITY, LONG LIFE - with Skid Plate

SIZE	BASIC1000 Cat #	BASIC2000 Cat #	BASIC3000 Cat #	BASIC4000 Cat #	BASIC5000 Cat #	BASIC6000 Cat #
6" x .100*	64125	64132	64133	64134	64135	64136
8" x .100	64163	64166	64167	64185	64206	64207
8" x .125	64234	64235	64236	64237	64238	64242
10" x .110	64271	64273	64274	64275	64276	64282
10" x .250	64335	64338	64341	64344	64345	64348
12" x .125	64376	64378	64379	64384	64387	64388
12" x .250	64439	64441	64442	64443	64447	64448
13.5" x .125	64471	64473	64474	64479	64482	64485
13.5" x .250	64516	64518	64522	64526	64528	64530
14" x .125+	64546	64547	64550	64552	64553	64555
14" x .250+	64573	64579	64580	64581	64582	64583



EXPERT - BETTER QUALITY, LONGER LIFE - No Skid Plate

SIZE	EXPERT1000 Cat #
6.5" x .100*	90411

* For use on the First-Cut CC150XL-EE saw.
+ For use on the First-Cut CC190PRO-EE saw.

**Includes 1"
arbor with
drive-pin hole
and triangle
knock-out**

SPECIFICATIONS	
Specification	Aggregate
1000-Purple	Very Hard
2000-Green	Hard
3000-Red	Medium Hard
4000-Orange	Medium
5000-Yellow	Medium Soft
6000-Black	Soft

Consider the aggregate in your area and cure time before determining the bond specification

Color codes **do not** refer to the aggregate map color codes found at the front of this book..



Joint Protectors

(50 per bag) 2" long x 1/2" wide x 1/8" thick

- Used when making cross-cuts in green concrete

Part #	UPC #	Cat #
JOINTPRO-50	603461171458	17145



CC148HXL-EE6 Gas



CC125BXL-EE6 Electric

CC150XL-EE SPECIFICATIONS	
Max. Depth of Cut	1-3/16" with 6" diameter blade 1-1/2" with 6.5" diameter blade
Blade Shaft RPM	4020
Blade Shaft Diameter	1-1/4"
Arbor Size	1"
Depth Indicator	Standard

CC150XL-EE FIRST-CUT SAW

6" & 6.5" Blade Capacity Gasoline

Features & Benefits:

- Reliable skid plate system for green concrete
- Heavy duty design but light weight enough for two people to lift
- Fully adjustable handle bars for operator comfort
- Telescoping handle adjusts to operator's height
- Up-cut design to keep debris from going back in the cut
- Blade raise/lower mechanical mechanism with spring loaded release
- Vacuum attachment guard plate



CC190PRO-EE SPECIFICATIONS	
Max. Depth of Cut	3-5/8" with 14" diameter blade
Blade Shaft RPM	3500
Blade Shaft Diameter	1-1/4"
Arbor Size	1" with single drive pin
Blade Raise/Lower	Electric actuation
Transmission	Eaton Model 6
Drive Speed	0-80 feet per minute
Includes	Electric start, low oil alert and tach/hour meter

CC190PRO-EE FIRST-CUT SAW

10"/12"/14" Blade Capacity Gasoline

Features & Benefits:

- Capable of .110" to .250" thick blades
- Self propelled drive
- Raise and lower adjustable handle bars
- Heavy duty handle design
- Self aligning blade shaft bearings
- Easy access to battery with heavy duty isolator switch
- Up-cut design to keep debris from going back in the cut
- Lifting hook for easy transport
- Parking Brake



MADE IN THE U.S.A.

CC190PRO-EE EARLY ENTRY SAW						
Model #	Engine Make/Model	Engine Power	UPC #	Part #	Cat #	Product Weight (lbs)
CC190PRO-EE	Honda® GX630	20.8 HP	603461133647	5801128	13364	420

Horsepower as rated by the engine manufacturer.



CORE VAC

DUST CONTROL



BLADE BANDIT

- Installs on most side grinders
- For use with diamond, tuck point or V-crack blades
- Visible depth adjustment
- Includes universal vacuum adapter that fits hose sizes 1", 1-1/4", 1-1/2" and 2"
- Clear polycarbonate for easy cutting view
- Heavy duty, flexible material to withstand rugged job sites

BLADE BANDIT FOR DUST REMOVAL

Description	UPC #	Part #	Cat #
Blade Bandit for 5" Blades	603461775403	2508106	77540
Black Bandit for 7" Blades	603461776172	2508107	77617



CUP BANDIT

- Rubber collar allows movement with the tool
- Clear polycarbonate for visible grinding
- Fits 3 size ports: 1-1/4", 2" & 2-1/4" vacuum port
- Removable edge to allow grinding against a wall
- Heavy duty material to withstand rugged job sites

CUP BANDIT FOR DUST REMOVAL

Description	UPC #	Part #	Cat #
Cup Bandit for 5" cup grinders	603461935074	2508100	93507
Cup Bandit for 7" cup grinders	603461936842	2508101	93684



BIT BANDIT

- Installs in seconds
- 1-1/2" vacuum port
- Clear polycarbonate for visible coring
- Heavy duty, flexible material to withstand rugged job sites

BIT BANDIT FOR DUST REMOVAL

Description	UPC #	Part #	Cat #
Bit Bandit for 1" to 4" diameter bits	603461928595	2508102	92859
Bit Bandit for 2" to 8" diameter bits	603461928199	2508103	92819



HEPA FILTERS

CV150C Vacuum

- Wet and dry
- Powerful heavy duty motor for industrial performance
- Provides maximum suction power for maximum pick-up

Volts	120V
Motor	1350 Watt / 8.2 Amp
CFM	150 CFM
Capacity	7.9 gallon (30L)
Dimensions	17"L x 19W x 27H
Hose Length	12 ft.

CV150C WET/DRY CONTAINMENT VACUUM

Description	UPC #	Part #	Cat #
CV150C Wet/Dry HEPA Vacuum	603461672856	4244132	67285



CAN STYLE



BAG STYLE

CV258 Vacuums

- 2" hose diameter
- 2 motors
- Self-cleaning patented filtration system
- Hepa filters
- Solid steel construction

Power	120V, 2700 Watt
Compressor	258 CFM
Filtration	Self-cleaning

CORE VAC CV258 DUST CONTAINMENT VACUUMS

Description	UPC #	Part #	Cat #
CV258C Vacuum (Can Style)	603461831666	4244130	83166
CV258B Vacuum (Bag Style)	603461832632	4244131	83263
6 Mil Bag Liner (50 bags) for CV258B	603461833004	2506170	83300



#LIT0017



Quality Is Choice

Diamond Products Limited
 333 Prospect St - Elyria, OH 44035
 800-321-5336 - diamondproducts.com
 Customer Service: custserv@diamondproducts.com