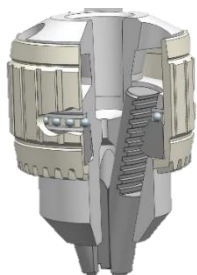


**Jacobs**<sup>®</sup>  
CHUCK

- Super Chuck<sup>®</sup> Ball Bearing Chucks
- Plain Bearing Keyed Chucks
- Precision Keyless Chucks
- Medical Stainless Steel Chucks
- Rubber-Flex<sup>®</sup> Collets
- Arbors
- Drill Sleeve, Sockets & Ejecting Drifts
- Power Tool Chuck
- Chuck Keys & Accessories

## BALL BEARING CHUCK



Super Chuck® Ball Bearing Chucks are designed for close tolerance production drilling on precision equipment.

### FEATURES:

- Ball bearing construction maximizes gripping force and drilling accuracy.
- Jaws center-ground for absolute straightness and alignment.
- One-piece sleeve eliminates crack between driving teeth often found in other designs.
- Through-hardened sleeve teeth plus hardened nose and keyholes provide outstanding wear resistance.
- Fluted sleeve standard.
- Each chuck 100% inspected for performance and precision.
- T.I.R. .003" maximum at half capacity.

## TAPER MOUNTED



| Model   | Part No.<br>(C&K) | Capacity Range |       |      |      | Mount | Key | Open Length |       | Diameter |      |
|---------|-------------------|----------------|-------|------|------|-------|-----|-------------|-------|----------|------|
|         |                   | Min            | Max   | Min  | Max  |       |     | in          | mm    | in       | mm   |
|         |                   | in             |       | mm   |      |       |     |             |       |          |      |
| 8-1/2 N | 30209             | 0.040          | 0.250 | 0.7  | 6.5  | 2JT   | K30 | 1.950       | 49.5  | 1.563    | 39.7 |
| 11N     | 30215             | 0.040          | 0.375 | 0.7  | 10.0 | 2JT   | K32 | 2.260       | 57.4  | 1.932    | 49.1 |
| 14N     | JCM30221          | 0.040          | 0.500 | 0.7  | 13.0 | 3JT   | K3  | 2.970       | 75.4  | 2.443    | 62.0 |
| 16N     | 30227             | 0.125          | 0.625 | 3.0  | 16.0 | 3JT   | K4  | 3.260       | 82.8  | 2.633    | 66.9 |
| 18N     | 30233             | 0.125          | 0.750 | 3.0  | 19.0 | 4JT   | K4  | 3.950       | 100.3 | 3.007    | 76.4 |
| 20N     | JCM30239          | 0.375          | 1.000 | 10.0 | 25.4 | 5JT   | K5  | 4.230       | 107.4 | 3.647    | 92.6 |

## SERVICE KITS



| Model       | Part No. | Description  |
|-------------|----------|--|
| U8-1/2N old | 33416    | 8-1/2N chuck repair kits Jaws&Nuts&Bearing Old Rev |
| U11N old    | 33417    | 11N chuck repair kits Jaws&Nuts&Bearing Old Rev    |
| U14N old    | JCM33418 | 14 chuck repair kits Jaws&Nuts&Bearing Old Rev     |
| U16N old    | JCM33419 | 16N chuck repair kits Jaws&Nuts&Bearing Old Rev    |
| U18N old    | JCM33420 | 18N chuck repair kits Jaws&Nuts&Bearing Old Rev    |
| U20N old    | 33421    | 20N chuck repair kits Jaws&Nuts&Bearing Old Rev    |
| U8-1/2N New | 30343    | 8-1/2N chuck repair kits Jaws&Nuts&Bearing New Rev |
| U11N New    | 30344    | 11N chuck repair kits Jaws&Nuts&Bearing New Rev    |
| U14N New    | JCM30345 | 14N chuck repair kits Jaws&Nuts&Bearing New Rev    |
| U16N New    | 30346    | 16N chuck repair kits Jaws&Nuts&Bearing New Rev    |
| U18N New    | JCM30347 | 18N chuck repair kits Jaws&Nuts&Bearing New Rev    |
| U20N New    | JCM30348 | 20N chuck repair kits Jaws&Nuts&Bearing New Rev    |



| Model | Part No.   | Description            |
|-------|------------|------------------------|
| S11N  | JCM5097    | 11N Sleeve             |
| S14N  | JCM5506    | 14N Sleeve             |
| S16N  | JCM5514    | 16N Sleeve             |
| S16N  | JCM5514P   | 16N Sleeve Plastic Bag |
| S18N  | JCM5522BS  | 18N Sleeve             |
| S18N  | JCM5522BSP | 18N Sleeve Plastic Bag |

## PLAIN BEARING KEYED CHUCKS

### PLAIN BEARING KEYED CHUCK

The O.E.M. standard for accuracy and durability on all types of industrial power and machine tools.

The Jacobs® Plain Bearing Chuck is the world's most widely used for medium or heavy-duty portable, bench or floor mounted power tools. This industrial quality chuck, with fully hardened and ground working components, offers exceptionally high accuracy, gripping power and durability. Both heavy and medium duty models are available in a wide range of capacities for use on threaded or taper mounted spindles.

#### FEATURES:

- Heavy and Medium Duty models for threaded or taper mounting.
- Jaws center-ground for absolute straightness and alignment.
- One-piece sleeve eliminates crack between driving teeth often found in other designs.
- Through-hardened sleeve teeth, plus hardened nose and keyholes provide outstanding wear resistance.
- Each chuck 100% inspected for performance and precision.
- T.I.R. .004" maximum at half capacity.
- KD- Equipped with positive drive slot.; PD- Equipped with pin type positive drive.; C- Equipped with locking collar - 1-1/16-20 thread, smooth sleeve.

### HEAVY DUTY CHUCK



| Model    | Part No. (C&K) | Part No. (Chuck Only) | Capacity Range |       |     |      | Mount  | Key | Open Length |      | Diameter |      |
|----------|----------------|-----------------------|----------------|-------|-----|------|--------|-----|-------------|------|----------|------|
|          |                |                       | Min            | Max   | Min | Max  |        |     | in          | mm   | in       | mm   |
|          |                |                       | in             |       | mm  |      |        |     |             |      |          |      |
| 7BA 3/8  | JCM6255        | -                     | 0.040          | 0.250 | 1.0 | 6.5  | 3/8-24 | K7  | 1.740       | 44.2 | 1.325    | 33.7 |
| 32BA 1/2 | JCM8859        | -                     | 0.040          | 0.375 | 1.0 | 10.0 | 1/2-20 | K32 | 2.310       | 58.7 | 1.790    | 45.5 |
| 34-06    | JCM6295        | -                     | 0.040          | 0.500 | 1.0 | 13.0 | 6JT    | K3  | 2.740       | 69.6 | 2.040    | 51.8 |
| 34-02    | 14442          | 14440                 | 0.040          | 0.500 | 1.0 | 13.0 | 2JT    | K3  | 2.740       | 69.6 | 2.040    | 51.8 |
| 34-33    | 14445          | -                     | 0.040          | 0.500 | 1.0 | 13.0 | 33JT   | K3  | 2.740       | 69.6 | 2.040    | 51.8 |
| 34-33C   | 14451          | -                     | 0.040          | 0.500 | 1.0 | 13.0 | 33JT   | K3C | 2.930       | 74.4 | 1.995    | 50.7 |
| 3A       | 6223           | -                     | 0.125          | 0.625 | 3.0 | 16.0 | 3JT    | K3  | 2.870       | 72.9 | 2.300    | 58.4 |
| 3B 5/8   | JCM6232        | 4953                  | 0.125          | 0.625 | 3.0 | 16.0 | 5/8-16 | K3  | 2.840       | 72.1 | 2.290    | 58.3 |
| 3B 1/2   | 33351          | 33350                 | 0.125          | 0.625 | 3.0 | 16.0 | 1/2-20 | K3  | 2.840       | 72.1 | 2.290    | 58.3 |
| 3 KD     | 6228           | -                     | 0.125          | 0.625 | 3.0 | 16.0 | 3JT    | K3  | 3.120       | 79.2 | 2.290    | 58.3 |
| 3 PD     | 6230           | -                     | 0.125          | 0.625 | 3.0 | 16.0 | 3JT    | K3  | 3.120       | 79.2 | 2.290    | 58.3 |
| 36       | JCM6309        | -                     | 0.180          | 0.800 | 5.0 | 20.3 | 3JT    | K4  | 3.140       | 79.7 | 2.540    | 64.5 |
| 36B 3/4  | JCM6316        | -                     | 0.188          | 0.800 | 5.0 | 20.3 | 3/4-16 | K4  | 3.200       | 81.3 | 2.540    | 64.5 |
| 36B 5/8  | JCM6314        | -                     | 0.188          | 0.800 | 5.0 | 20.3 | 5/8-16 | K4  | 3.200       | 81.3 | 2.540    | 64.5 |
| 36KD     | 14865          |                       | 0.180          | 0.800 | 5.0 | 20.3 | 3JT    | K4  | 3.420       | 86.9 | 2.540    | 64.5 |

### SERVICE KITS



| Model | Part No. | Description                        |
|-------|----------|------------------------------------|
| S3    | JCM4944  | 3 series chuck sleeve              |
| S3    | JCM4944P | 3 series chuck sleeve Plastic Bag  |
| S34   | 5046     | 34 series chuck Sleeve             |
| S36   | JCM5066  | 36 series chuck sleeve             |
| S36   | JCM5066P | 36 series chuck sleeve Plastic Bag |



| Model | Part No. | Description                           |
|-------|----------|---------------------------------------|
| U3    | JCM7417  | 3 Series Chuck Repair Kits Jaws&Nuts  |
| U34   | JCM7424  | 34 Series Chuck Repair Kits Jaws&Nuts |
| U36   | 7425     | 36 Series Chuck Repair Kits Jaws&Nuts |

# JACOBS

## PLAIN BEARING KEYED CHUCKS

### MEDIUM DUTY CHUCK



### SERVICE KITS



| Model        | Part No. [C&K] | Part No. [Chuck Only]   | Capacity Range |       |     |      | Mount     | Key | Open Length |      | Diameter |      |
|--------------|----------------|-------------------------|----------------|-------|-----|------|-----------|-----|-------------|------|----------|------|
|              |                |                         | Min            | Max   | Min | Max  |           |     | in          | mm   | in       | mm   |
|              |                |                         | in             |       | mm  |      |           |     |             |      |          |      |
| 0            | 6200           | 4900                    | 0.014          | 0.156 | 0.3 | 4.0  | 0JT       | K0  | 1.100       | 27.9 | 0.850    | 21.6 |
| 0B 5/16      | JCM6204        | JCM4909                 | 0.014          | 0.156 | 0.3 | 4.0  | 5/16-24   | K0  | 1.170       | 29.7 | 0.850    | 21.6 |
| 1A           | JCM6206        | -                       | 0.040          | 0.250 | 1.0 | 6.5  | 1JT       | K1  | 1.570       | 39.9 | 1.175    | 29.9 |
| 1BA 3/8      | JCM6208        | -                       | 0.040          | 0.250 | 1.0 | 6.5  | 3/8-24    | K1  | 1.570       | 39.9 | 1.175    | 29.9 |
| 2A           | JCM6214        | -                       | 0.040          | 0.375 | 1.0 | 10.0 | 2JT       | K2  | 2.170       | 55.1 | 1.675    | 42.6 |
| 2-01         | 33348          | 33347                   | 0.040          | 0.375 | 1.0 | 10.0 | 1JT       | K2  | 2.170       | 55.1 | 1.675    | 42.6 |
| 2BA 3/8      | JCM6219        | -                       | 0.040          | 0.375 | 1.0 | 10.0 | 3/8-24    | K2  | 2.170       | 55.1 | 1.675    | 42.6 |
| 33           | JCM6279        | -                       | 0.080          | 0.500 | 2.0 | 13.0 | 33JT      | K32 | 2.520       | 64.0 | 1.790    | 45.5 |
| 33BA 3/8     | JCM6283        | -                       | 0.080          | 0.500 | 2.0 | 13.0 | 3/8-24    | K32 | 2.430       | 61.7 | 1.790    | 45.0 |
| 33BA 1/2     | JCM6287        | JCM5036                 | 0.080          | 0.500 | 2.0 | 13.0 | 1/2-20    | K32 | 2.430       | 61.7 | 1.790    | 45.0 |
| 33BA 1/2 Din | -              | JCM32479 <sup>(1)</sup> | 0.080          | 0.500 | 2.0 | 13.0 | 1/2-20    | K32 | 2.430       | 61.7 | 1.684    | 42.8 |
| 33BA 1/2 Din | JCM32685       | -                       | 0.080          | 0.500 | 2.0 | 13.0 | 1/2-20    | K32 | 2.430       | 61.7 | 1.684    | 42.8 |
| 33BA 5/8     | JCM6289        | JCM5038                 | 0.080          | 0.500 | 2.0 | 13.0 | 5/8-16    | K32 | 2.430       | 61.6 | 1.792    | 45.5 |
| 33BA 5/8     | -              | JCM5038P <sup>(2)</sup> | 0.080          | 0.500 | 2.0 | 13.0 | 5/8-16    | K32 | 2.430       | 61.6 | 1.792    | 45.5 |
| 3326A        | 6291           | -                       | 0.080          | 0.500 | 2.0 | 13.0 | 5/8-16STR | K32 | 2.850       | 72.4 | 1.792    | 45.5 |
| 33KD         | JCM6281        | -                       | 0.080          | 0.500 | 2.0 | 13.0 | 33JT      | K32 | 2.770       | 70.1 | 1.792    | 45.5 |

(1) Nickel Plating; (2) Individual Plastic Bag

| Model | Part No. | Description                           |
|-------|----------|---------------------------------------|
| S33   | JCM5016  | 33 series chuck sleeve                |
| U33   | 7423     | 33 Series Chuck Repair Kits Jaws&Nuts |

### LIGHT DUTY CHUCK

Particular Size Design For Portable Tools, Widely Applied To Portable Drill.

#### FEATURES:

- Light Duty Design- Portable Tool Fit Size
- Jaws Center-Grind for Straightness and Alignment.
- Each Chuck 100% Inspected For Performance And Precision.



| Model                          | Part No. [C&K]          | Part No. [Chuck Only]    | Capacity Range |       |     |      | Mount  | Key | Open Length |      | Diameter |      |
|--------------------------------|-------------------------|--------------------------|----------------|-------|-----|------|--------|-----|-------------|------|----------|------|
|                                |                         |                          | Min            | Max   | Min | Max  |        |     | in          | mm   | in       | mm   |
|                                |                         |                          | in             |       | mm  |      |        |     |             |      |          |      |
| 41BA 3/8                       | JCM32282                | JCM32249                 | 0.040          | 0.375 | 1.0 | 10.0 | 3/8-24 | K30 | 2.060       | 52.3 | 1.427    | 36.3 |
| 41BA 3/8                       | -                       | JCM32249P <sup>(2)</sup> | 0.040          | 0.375 | 1.0 | 10.0 | 3/8-24 | K30 | 2.060       | 52.3 | 1.427    | 36.3 |
| 41BA 3/8                       | JCM30246 <sup>(1)</sup> | -                        | 0.040          | 0.375 | 1.0 | 10.0 | 3/8-24 | K30 | 2.060       | 52.3 | 1.427    | 36.3 |
| 41BA 1/2                       | 31090                   | -                        | 0.040          | 0.375 | 1.0 | 10.0 | 1/2-20 | K30 | 2.060       | 52.3 | 1.427    | 36.3 |
| 41BA 3/8 SM SLV <sup>(3)</sup> | 31138                   | -                        | 0.040          | 0.375 | 1.0 | 10.0 | 3/8-24 | K30 | 2.060       | 52.3 | 1.427    | 36.3 |
| 24BA 3/8                       | 14946                   | -                        | 0.063          | 0.500 | 1.6 | 13.0 | 3/8-24 | KK  | 2.304       | 58.5 | 1.680    | 42.7 |
| 26BA 1/2                       | 14947                   | JCM13593                 | 0.063          | 0.500 | 1.6 | 13.0 | 1/2-20 | KK  | 2.304       | 58.5 | 1.715    | 43.6 |
| 26BA 1/2                       | -                       | JCM13593P <sup>(2)</sup> | 0.063          | 0.500 | 1.6 | 13.0 | 1/2-20 | KK  | 2.304       | 58.5 | 1.715    | 43.6 |
| 26BA 1/2                       | 31052D <sup>(1)</sup>   | -                        | 0.063          | 0.500 | 1.6 | 13.0 | 1/2-20 | KK  | 2.304       | 58.5 | 1.715    | 43.6 |

(1) Clamshell Package; (2) Individual Plastic Bag; (3) Smooth Sleeve

**JACOBS**  
CHUCK

## PRECISION KEYLESS CHUCKS

### PRECISION KEYLESS CHUCK

Precision design combines keyless operation with the ultimate in drill chuck accuracy.

Jacobs® Industrial Keyless Chucks are high precision devices specifically designed for high accuracy applications on either conventional or CNC equipment. Tightened and released by hand, they permit more rapid tooling changes to increase machining productivity. A self-tightening feature produces significantly higher gripping force to resist tool shank slippage. Precision manufactured and tested to the most exacting quality standards, Jacobs® Industrial Keyless Chucks can be counted on for extremely high reliability and durability under the most demanding machining conditions.

#### FEATURES:

- High Precision- Specifically Designed for high accuracy application
- Keyless Type - Hand tighten & loosen design provides rapid tooling changes to increase machine productivity.
- High Grip Torque - Self-Tightening Feature automatically provides significantly higher Gripping Force to resist tool shank slippage.
- Reliability and Durability - Excellent design and through harden components can meet and exceed all machining applications.

### HIGH PRECISION MODEL TAPER MOUNTED

- High Precision- Precision Tested and Certified to 0.0016" T.I.R. Max at Half Capacity,
- High Grip Torque- Self-Tightening Feature Automatically Increases Gripping Force.
- Durability - All Components Exposed to Wear are Completely Hardened to Maintain Accuracy and Extend Chuck Life.
- Wide Applications - Jacobs® Taper Mount Permits Use on a Wide Range of Drill Presses, Jig Borers, Milling Machines and Production Drilling Equipment.



| Model       | Part No. | Capacity Range |       |     |      | Mount | Open Length |      | Diameter |      |
|-------------|----------|----------------|-------|-----|------|-------|-------------|------|----------|------|
|             |          | Min            | Max   | Min | Max  |       | in          | mm   | in       | mm   |
|             |          | in             |       | mm  |      |       |             |      |          |      |
| JKP 65-J1   | 31121D   | 0.012          | 0.255 | 0.3 | 6.5  | 1JT   | 2.440       | 62.0 | 1.280    | 32.5 |
| JKP 80-J2S  | 9679     | 0.012          | 0.315 | 0.3 | 8.0  | 2JTS* | 2.640       | 67.0 | 1.460    | 37.0 |
| JKP 100-J2  | 9681     | 0.020          | 0.394 | 0.5 | 10.0 | 2JT   | 3.190       | 81.0 | 1.610    | 41.0 |
| JKP 100-J33 | 9680     | 0.020          | 0.394 | 0.5 | 10.0 | 33JT  | 3.190       | 81.0 | 1.610    | 41.0 |
| JKP 130-J2  | 9683     | 0.039          | 0.512 | 1.0 | 13.0 | 2JT   | 3.460       | 88.0 | 1.810    | 46.0 |
| JKP 130-J33 | 9682D    | 0.039          | 0.512 | 1.0 | 13.0 | 33JT  | 3.460       | 88.0 | 1.810    | 46.0 |
| JKP 130-J6  | 9684     | 0.039          | 0.512 | 1.0 | 13.0 | 6JT   | 3.460       | 88.0 | 1.810    | 46.0 |
| JKP 160-J6  | 9685D    | 0.118          | 0.630 | 3.0 | 16.0 | 6JT   | 3.740       | 95.0 | 2.170    | 55.0 |

### HIGH TORQUE/ HIGH PRECISION MODEL

- High Precision- Precision Tested and Certified to 0.0016" T.I.R. Max at Half Capacity,
- Extra High Grip Torque- Furnished With Spanner Wrench to Allow The Application Of Supplementary Gripping Torque. Light Tightening Increases Gripping Torque Up To 3 Times Higher Than Hand Tightening.
- Stability Of Bit Holding - Resists Tool Loosening On High-speed Machines With Right Hand Rotation And Instant Spindle Stop.
- Wide Application - For Use On CNC Machining Centers In Drilling, Boring, Counter-boring And Milling Operations.



| Model       | Part No. | Capacity Range |       |     |      | Mount | Open Length |      | Diameter |      |
|-------------|----------|----------------|-------|-----|------|-------|-------------|------|----------|------|
|             |          | Min            | Max   | Min | Max  |       | in          | mm   | in       | mm   |
|             |          | in             |       | mm  |      |       |             |      |          |      |
| JKT65-J1    | 31122D   | 0.000          | 0.255 | 0.0 | 6.5  | 1JT   | 2.440       | 62.0 | 1.280    | 32.5 |
| JKT 130-J2  | 30527    | 0.039          | 0.512 | 1.0 | 13.0 | 2JT   | 3.460       | 88.0 | 1.810    | 46.0 |
| JKT 130-J33 | 30528    | 0.039          | 0.512 | 1.0 | 13.0 | 33JT  | 3.460       | 88.0 | 1.810    | 46.0 |
| JKT 130-J6  | 30529    | 0.039          | 0.512 | 1.0 | 13.0 | 6JT   | 3.460       | 88.0 | 1.810    | 46.0 |
| JKT 160-J6  | 30530D   | 0.118          | 0.630 | 3.0 | 16.0 | 6JT   | 3.740       | 95.0 | 2.170    | 55.0 |



## PRECISION KEYLESS CHUCKS

### PRECISION KEYLESS CHUCK

Precision design combines keyless operation with the ultimate in drill chuck accuracy.

Jacobs® Industrial Keyless Chucks are high precision devices specifically designed for high accuracy applications on either conventional or CNC equipment. Tightened and released by hand, they permit more rapid tooling changes to increase machining productivity. A self-tightening feature produces significantly higher gripping force to resist tool shank slippage. Precision manufactured and tested to the most exacting quality standards, Jacobs® Industrial Keyless Chucks can be counted on for extremely high reliability and durability under the most demanding machining conditions.

### MEDIUM DUTY PRECISION MODEL



- Industrial Use- Medium Duty
- Efficiency- Fast Change Of Tools.
- High Grip Torque- Self-Tightening Feature Automatically Increases The Grip In Proportion To The Increase in Torque During Drilling.
- Wide Application- Threaded Mounts For Professional Portable Drill Machines And Taper Fit For Stationary Drilling Machines.

| Model      | Part No. | Capacity Range |       |     |      | Mount  | Open Length |      | Diameter |      |
|------------|----------|----------------|-------|-----|------|--------|-------------|------|----------|------|
|            |          | Min            | Max   | Min | Max  |        | in          | mm   | in       | mm   |
|            |          | in             |       | mm  |      |        |             |      |          |      |
| JK 130 1/2 | 33363D   | 0.039          | 0.512 | 1.0 | 13.0 | 1/2-20 | 3.390       | 86.0 | 1.730    | 44.0 |
| JK 130 J33 | 33364    | 0.039          | 0.512 | 1.0 | 13.0 | 33JT   | 3.390       | 86.0 | 1.730    | 44.0 |
| JK 130 J2  | 33365    | 0.039          | 0.512 | 1.0 | 13.0 | 2JT    | 3.390       | 86.0 | 1.730    | 44.0 |
| JK 130 J6  | 33366    | 0.039          | 0.512 | 1.0 | 13.0 | 6JT    | 3.390       | 86.0 | 1.730    | 44.0 |

### HIGH TORQUE/ HIGH PRECISION KEYLESS CHUCKS WITH INTEGRATED SHANK

- High Precision- Maximum Total Integrated Run-out 0.0016"
- Integrated Arbor Design- Arbor Is Integrated Into The Internal Socket Of The Drill Chuck.
- Integrity- Prevent An Accidently Separate Of the Arbor And The Drill Chuck.
- Greater Rigidity and Precision- Compact Design Eliminates Accumulated Tolerance.
- Various Mount Options- Morse Tapers, Straight Shanks and R-8.

| Model      | Part No. | Capacity Range |       |     |      | Mount | Open Length |      | Diameter |      |
|------------|----------|----------------|-------|-----|------|-------|-------------|------|----------|------|
|            |          | Min            | Max   | Min | Max  |       | in          | mm   | in       | mm   |
|            |          | in             |       | mm  |      |       |             |      |          |      |
| JK 100-MT2 | 31407D   | 0.000          | 0.394 | 0.0 | 10.0 | MT2   | 2.870       | 73.0 | 1.690    | 43.0 |
| JK 130-MT2 | 31408D   | 0.039          | 0.512 | 1.0 | 13.0 | MT2   | 3.150       | 80.0 | 1.890    | 48.0 |
| JK 130-MT3 | 31409    | 0.039          | 0.512 | 1.0 | 13.0 | MT3   | 3.150       | 80.0 | 1.890    | 48.0 |
| JK 130-MT4 | 31410    | 0.039          | 0.512 | 1.0 | 13.0 | MT4   | 3.230       | 82.0 | 1.890    | 48.0 |
| JK 130-R8  | 31411    | 0.039          | 0.512 | 1.0 | 13.0 | R8    | 3.230       | 82.0 | 1.890    | 48.0 |
| JK 160-MT3 | 31414    | 0.118          | 0.630 | 3.0 | 16.0 | MT3   | 3.350       | 85.0 | 2.130    | 54.0 |
| JK 160-MT4 | 31415    | 0.118          | 0.630 | 3.0 | 16.0 | MT4   | 3.350       | 85.0 | 2.130    | 54.0 |
| JK 160-R8  | 31416    | 0.118          | 0.630 | 3.0 | 16.0 | R8    | 3.350       | 85.0 | 2.130    | 54.0 |



## MEDICAL STAINLESS STEEL CHUCKS

### MEDICAL STAINLESS STEEL CHUCK

#### FEATURES:

- For Special Applications on Either Portable Air Operated or Stationary Machine Tools
- Resist Chemical Corrosion and Reduce Potential for Hazardous Sparking.
- Mainly Used in medical and chemical industries.

### SS KEYED CHUCK



- Good Anti-Corrosion Performance - All components of SS Chuck Are Made From Stainless Steel.
- Good Anti-Rust Performance- Specific Surface Treatment With Multiprocessing Ensures An Excellent Rust Protection In Medical Or Corrosive Environments.
- Spark Prevention- Stainless Steel Can Reduce This Potential Risk In Special Environment.
- Precision- T.I.R. 0.007".

| Model    | Part No. [C&K] | Part No. [Chuck Only] | Capacity Range |       |     |     | Mount    | Key | Open Length |      | Diameter |      |
|----------|----------------|-----------------------|----------------|-------|-----|-----|----------|-----|-------------|------|----------|------|
|          |                |                       | Min            | Max   | Min | Max |          |     | in          | mm   | in       | mm   |
|          |                |                       | in             |       | mm  |     |          |     |             |      |          |      |
| 0M       | JCM6624Z       |                       | 0.028          | 0.156 | 0.7 | 4.0 | 0JT      | K0M | 1.100       | 27.9 | 0.850    | 21.6 |
| 0M 5/16  | JCM6625Z       | JCM6602Z              | 0.028          | 0.156 | 0.7 | 4.0 | 5/16 -24 | K0M | 1.170       | 29.7 | 0.850    | 21.6 |
| 1M       | JCM6626Z       | JCM6611Z              | 0.028          | 0.250 | 0.7 | 6.5 | 1JT      | K1M | 1.571       | 39.9 | 1.118    | 28.4 |
| 1BM 5/16 | JCM6627Z       |                       | 0.028          | 0.250 | 0.7 | 6.5 | 5/16-24  | K1M | 1.571       | 39.9 | 1.118    | 28.4 |
| 1BM 3/8  | JCM6628Z       | JCM6613Z              | 0.028          | 0.250 | 0.7 | 6.5 | 3/8-24   | K1M | 1.571       | 39.9 | 1.118    | 28.4 |
| 1M *     |                | JCM34244              | 0.031          | 0.311 | 0.8 | 7.9 | 1JT      | K1M | 1.571       | 39.9 | 1.118    | 28.4 |
| 1M *     | JCM33619       | JCM33602              | 0.039          | 0.319 | 1.0 | 8.1 | 1JT      | K1M | 1.571       | 39.9 | 1.118    | 28.4 |

\* Only for Asia market.

### SS KEYLESS CHUCK



- Keyless Type - Hand tighten & loosen design provides rapid tooling changes.
- Self-Tightening Feature automatically provides significantly higher Gripping Force to resist tool shank slippage.
- Good Anti-Corrosion Performance - All components of SS Chuck Are Made From Stainless Steel.
- Good Anti-Rust Performance- Specific Surface Treatment With Multiprocessing Ensures An Excellent Rust Protection In Medical Or Corrosive Environments.
- Precision- T.I.R. 0.007".

| Model       | Part No. [C&K] | Capacity Range |       |     |     | Mount | Open Length |      | Diameter |      |
|-------------|----------------|----------------|-------|-----|-----|-------|-------------|------|----------|------|
|             |                | Min            | Max   | Min | Max |       | in          | mm   | in       | mm   |
|             |                | in             |       | mm  |     |       |             |      |          |      |
| 2M KL 1JT * | JCM33468       | 0.020          | 0.315 | 0.5 | 8.0 | 1JT   | 2.272       | 57.7 | 1.181    | 30.0 |

\* Only for Asia market.

# JACOBS

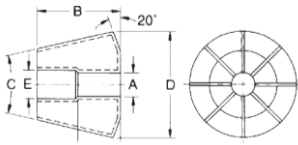
## RUBBER-FLEX® COLLETS

### RUBBER-FLEX® COLLETS

Jacobs® Rubber-Flex collets outperform conventional split-steel collets in gripping power, accuracy and durability.

#### FEATURES:

- Parallel jaw insert surfaces exert uniform, accurate gripping force up to three times greater than can be achieved with split-steel collets.
- Each collet accepts and precisely centers a wide range of both decimal or metric diameters (within individual capacity ranges) to speed setups and increase machining productivity
- Durable one-piece construction. Synthetic rubber retains flexibility and resists deterioration from heat, coolants and cutting compounds.
- Steel jaw inserts precision ground (after molding process) to assure maximum gripping accuracy (parallelism). Hardened for greater wear resistance than split steel collets.
- Each collet bore is held concentric to the O.D. tapers, both front and back, to minimize T.I.R.
- Automatically seals tool O.D. to permit coolant flow through tool reducing wear.
- Seals collets and machine spindles to protect from abrasive particles and swarf.



### LATHE CHUCK COLLETS



| Model | Part No. | Capacity Range (A) |       |      |      | Length (B) |      | Cone Angle (C) | Outside Diameter (D) |      | Number of Inserts |
|-------|----------|--------------------|-------|------|------|------------|------|----------------|----------------------|------|-------------------|
|       |          | Min                | Max   | Min  | Max  | in         | mm   |                | in                   | mm   |                   |
|       |          | in                 |       | mm   |      |            |      |                |                      |      |                   |
| J910  | 9555D    | 0.060              | 0.125 | 1.5  | 3.2  | 1.74       | 44.5 | 26°            | 2.25                 | 57.0 | 4                 |
| J911  | 9556D    | 0.125              | 0.250 | 3.2  | 6.4  | 1.74       | 44.5 | 26°            | 2.25                 | 57.0 | 6                 |
| J912  | 9557DD   | 0.250              | 0.375 | 6.4  | 9.5  | 1.74       | 44.5 | 26°            | 2.25                 | 57.0 | 6                 |
| J913  | 9558D    | 0.375              | 0.500 | 9.5  | 12.7 | 1.74       | 44.5 | 26°            | 2.25                 | 57.0 | 8                 |
| J914  | 9559D    | 0.500              | 0.625 | 12.7 | 15.9 | 1.74       | 44.5 | 26°            | 2.25                 | 57.0 | 10                |
| J915  | 9560D    | 0.625              | 0.750 | 15.9 | 19.1 | 1.74       | 44.5 | 26°            | 2.25                 | 57.0 | 10                |
| J916  | 9561     | 0.750              | 0.875 | 19.1 | 22.2 | 1.74       | 44.5 | 26°            | 2.25                 | 57.0 | 12                |
| J918  | 9563     | 1.000              | 1.125 | 25.4 | 28.6 | 1.74       | 44.5 | 26°            | 2.25                 | 57.0 | 20                |
| J919  | 9564     | 1.125              | 1.250 | 28.6 | 31.8 | 1.74       | 44.5 | 26°            | 2.25                 | 57.0 | 24                |
| J920  | 9565D    | 1.250              | 1.375 | 31.8 | 34.9 | 1.74       | 44.5 | 26°            | 2.25                 | 57.0 | 24                |
| J921  | 9567     | 1.375              | 1.500 | 34.9 | 38.1 | 1.74       | 44.5 | 26°            | 2.25                 | 57.0 | 24                |

### TAP CHUCK COLLETS



| Model | Part No. | Capacity Range (A) |       |     |      | Length (B) |      | Cone Angle (C) | Outside Diameter (D) |      | Number of Inserts |
|-------|----------|--------------------|-------|-----|------|------------|------|----------------|----------------------|------|-------------------|
|       |          | Min                | Max   | Min | Max  | in         | mm   |                | in                   | mm   |                   |
|       |          | in                 |       | mm  |      |            |      |                |                      |      |                   |
| J420  | 9747     | 0.176              | 0.320 | 4.5 | 8.1  | 0.50       | 12.7 | 40°            | 0.941                | 23.9 | 6                 |
| J421  | 9748     | 0.139              | 0.257 | 3.5 | 6.5  | 0.50       | 12.7 | 40°            | 0.941                | 23.9 | 6                 |
| J422  | 9751     | 0.253              | 0.383 | 6.4 | 9.7  | 0.50       | 12.7 | 40°            | 0.941                | 23.9 | 6                 |
| J423  | 9817     | 0.090              | 0.180 | 2.3 | 4.6  | 0.50       | 12.7 | 40°            | 0.860                | 21.8 | 4                 |
| J440  | 9749     | 0.280              | 0.500 | 7.1 | 12.7 | 0.63       | 16.0 | 45°            | 1.296                | 32.9 | 6                 |
| J441  | 9750D    | 0.176              | 0.383 | 4.5 | 9.7  | 0.63       | 16.0 | 45°            | 1.296                | 32.9 | 6                 |

### DIE GRINDER COLLETS



| Model | Part No. | Capacity Range (A) |       |     |     | Length (B) |      | Cone Angle (C) | Outside Diameter (D) |      | Number of Inserts |
|-------|----------|--------------------|-------|-----|-----|------------|------|----------------|----------------------|------|-------------------|
|       |          | Min                | Max   | Min | Max | in         | mm   |                | in                   | mm   |                   |
|       |          | in                 |       | mm  |     |            |      |                |                      |      |                   |
| J116  | B31069   | 0.100              | 0.177 | 2.4 | 4.5 | 0.47       | 11.9 | 26°            | 0.59                 | 15.1 | 6                 |
| J117  | B31070   | 0.177              | 0.256 | 4.5 | 6.5 | 0.47       | 11.9 | 26°            | 0.59                 | 15.1 | 8                 |

### DIE GRINDER CHUCKS & REPLACEMENT

| DIE GRINDER CHUCK Model | Part No. | Capacity Range                 |       |     |     | Length |      | Mount  | Outside Diameter (D) |      |
|-------------------------|----------|--------------------------------|-------|-----|-----|--------|------|--------|----------------------|------|
|                         |          | Min                            | Max   | Min | Max | in     | mm   |        | in                   | mm   |
|                         |          | in                             |       | mm  |     |        |      |        |                      |      |
| 100-61                  | 9756     | 0.090                          | 0.250 | 2.3 | 6.4 | 1.88   | 47.8 | 3/8-24 | 0.750                | 19.1 |
| Model                   | Part No. | Description                    |       |     |     |        |      |        |                      |      |
| 42-01                   | 6654     | BACK JAWS For 42-01 TAP CHUCKS |       |     |     |        |      |        |                      |      |
| 41-01                   | 6656     | BACK JAWS For 41-01 TAP CHUCKS |       |     |     |        |      |        |                      |      |



BACK JAWS



# JACOBS ARBORS

Precision CNC machined and ground to ensure high accuracy and close-tolerance fit.

## FEATURES:

- Precision machined and ground to master gages for maximum performance with Jacobs® drill and tap chucks.
- Adapt Jacobs® taper to: Morse taper, straight shanks, threaded shanks and Bridgeport® tapers.
- Ideal for use with custom tool and work holder designs and for specialized machining application.

## ARBORS

### MORSE TAPER - JACOBS® TAPER ARBOR



| Model | Part No. | Description            | Overall length (L) |     | Weight |      |
|-------|----------|------------------------|--------------------|-----|--------|------|
|       |          |                        | in                 | mm  | oz     | gram |
| A0102 | 7300N    | ARBOR 1MT x 2JT A0102  | 3.59               | 91  | 2      | 57   |
| A0201 | 7306N    | ARBOR 2MT x 1JT A0201  | 3.94               | 100 | 4      | 113  |
| A0202 | 7307N    | ARBOR 2MT x 2JT A0202  | 4.16               | 106 | 5      | 142  |
| A0203 | 7308DN   | ARBOR 2MT x 3JT A0203  | 4.50               | 114 | 7      | 198  |
| A0204 | 7309N    | ARBOR 2MT x 4JT A0204  | 4.94               | 125 | 12     | 340  |
| A0206 | 7311N    | ARBOR 2MT x 6JT A0206  | 4.28               | 109 | 5      | 142  |
| A0233 | 7312N    | ARBOR 2MT x 33JT A0233 | 4.28               | 109 | 5      | 142  |
| A0302 | 7314N    | ARBOR 3MT x 2JT A0302  | 4.94               | 125 | 10     | 284  |
| A0303 | 7315N    | ARBOR 3MT x 3JT A0303  | 5.27               | 134 | 12     | 340  |
| A0304 | 7316DN   | ARBOR 3MT x 4JT A0304  | 5.70               | 145 | 17     | 482  |
| A0305 | 7317N    | ARBOR 3MT x 5JT A0305  | 5.94               | 151 | 23     | 652  |
| A0306 | 7318N    | ARBOR 3MT x 6JT A0306  | 5.06               | 129 | 11     | 312  |
| A0333 | 7319DN   | ARBOR 3MT x 33JT A0333 | 5.06               | 129 | 11     | 312  |
| A0402 | 7320N    | ARBOR 4MT x 2JT A0402  | 5.91               | 150 | 21     | 595  |
| A0403 | 7321N    | ARBOR 4MT x 3JT A0403  | 6.25               | 159 | 23     | 652  |
| A0404 | 7322DN   | ARBOR 4MT x 4JT A0404  | 6.69               | 170 | 30     | 851  |
| A0405 | 7323DN   | ARBOR 4MT x 5JT A0405  | 6.91               | 176 | 35     | 992  |
| A0406 | 7324DN   | ARBOR 4MT x 6JT A0406  | 6.03               | 153 | 21     | 595  |
| A0433 | 7325DN   | ARBOR 4MT x 33JT A0433 | 6.06               | 154 | 22     | 624  |
| A0503 | 7327N    | ARBOR 5MT x 3JT A0503  | 7.50               | 191 | 53     | 1503 |
| A0504 | 7328DN   | ARBOR 5MT x 4JT A0504  | 7.94               | 202 | 58     | 1644 |
| A0505 | 7329N    | ARBOR 5MT x 5JT A0505  | 8.16               | 207 | 65     | 1843 |

### STRAIGHT SHANK TO JACOBS® TAPER



| Model | Part No. | Description                   | Overall length (L) |     | Weight |      |
|-------|----------|-------------------------------|--------------------|-----|--------|------|
|       |          |                               | in                 | mm  | oz     | gram |
| A4000 | 7348DN   | A4000 ARBOR SS/JT 1/2" X 0JT  | 3.09               | 79  | 2      | 57   |
| A4001 | 7349N    | A4001 ARBOR SS/JT 1/2" X 1JT  | 3.31               | 84  | 2      | 57   |
| A4002 | 7350N    | A4002 ARBOR SS/JT 1/2" X 2JT  | 3.53               | 90  | 2      | 57   |
| A4003 | 7351N    | A4003 ARBOR SS/JT 1/2" X 3JT  | 3.88               | 98  | 4      | 113  |
| A4006 | 7353N    | A4006 ARBOR SS/JT 1/2" X 6JT  | 3.66               | 93  | 4      | 113  |
| A4033 | 7354DN   | A4033 ARBOR SS/JT 1/2" X 33JT | 3.66               | 93  | 4      | 113  |
| A4102 | 7356N    | A4102 ARBOR SS/JT 5/8" X 2JT  | 3.53               | 90  | 5      | 142  |
| A4103 | 7357N    | A4103 ARBOR SS/JT 5/8" X 3JT  | 3.88               | 98  | 6      | 170  |
| A4106 | 7359N    | A4106 ARBOR SS/JT 5/8" X 6JT  | 3.66               | 93  | 5      | 142  |
| A4133 | 7360DN   | A4133 ARBOR SS/JT 5/8" X 33JT | 3.66               | 93  | 5      | 142  |
| A4202 | 7361N    | A4202 ARBOR SS/JT 3/4" X 2JT  | 4.03               | 102 | 6      | 170  |
| A4203 | 7362N    | A4203 ARBOR SS/JT 3/4" X 3JT  | 4.38               | 111 | 7      | 198  |
| A4206 | 7364DN   | A4206 ARBOR SS/JT 3/4" X 6JT  | 4.16               | 106 | 6      | 170  |
| A4233 | 7365N    | A4233 ARBOR SS/JT 3/4" X 33JT | 4.16               | 106 | 6      | 170  |
| A4303 | 7367N    | A4303 ARBOR SS/JT 1" X 3JT    | 4.38               | 111 | 11     | 312  |
| A4306 | 7368N    | A4306 ARBOR SS/JT 1" X 6JT    | 4.16               | 106 | 10     | 284  |

# JACOBS ARBORS

Precision CNC machined and ground to ensure high accuracy and close-tolerance fit.

## FEATURES:

- Precision machined and ground to master gages for maximum performance with Jacobs® drill and tap chucks.
- Adapt Jacobs® taper to: Morse taper, straight shanks, threaded shanks and Bridgeport® tapers.
- Ideal for use with custom tool and work holder designs and for specialized machining application.

## ARBORS

### THREADED SHANK TO MORSE TAPER



| Model | Part No. | Description           | Overall length (L) |     | Weight |      |
|-------|----------|-----------------------|--------------------|-----|--------|------|
|       |          |                       | in                 | mm  | oz     | gram |
| A0261 | 7345DN   | A0261 2 Morse 3/8"-24 | 3.69               | 94  | 4      | 113  |
| A0264 | 7346DN   | A0264 2 Morse 1/2"-20 | 4.06               | 103 | 5      | 142  |
| A0268 | 7347DN   | A0268 2 Morse 5/8"-16 | 4.19               | 106 | 5      | 142  |

### BRIDGEPORT® TAPER TO JACOBS® TAPER

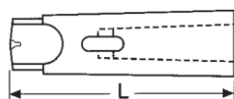


| Model | Part No. | Description                | Overall length (L) |     | Weight |      |
|-------|----------|----------------------------|--------------------|-----|--------|------|
|       |          |                            | in                 | mm  | oz     | gram |
| A0802 | 7339N    | A0802 ARBOR BT/JT R8 X 2JT | 5.18               | 132 | 16     | 454  |
| A0803 | 7340N    | A0803 ARBOR BT/JT R8 X 3JT | 5.53               | 140 | 17     | 482  |
| A0804 | 7341N    | A0804 ARBOR BT/JT R8 X 4JT | 5.97               | 152 | 17     | 482  |
| A0806 | 7342DN   | A0806 ARBOR BT/JT R8 X 6JT | 5.31               | 135 | 16     | 454  |
| A0833 | 7343N    | A0833 ARBOR BT/JT R8 X33JT | 5.31               | 135 | 16     | 454  |

### DRILL SLEEVE AND EXTENSION SOCKETS

Archer precision machine tool accessories for maximum flexibility in tooling setups.

#### DRILL SLEEVES- MORSE TAPER



### Archer® Series 600

#### FEATURES:

- Adapt smaller Morse taper shank tools to larger machine spindles.
- Oil toughened and externally precision ground with hardened tang.
- Outside Morse taper sizes are 1 through 6; inside Morse taper sizes are 0 through 5.

| Model | Part No. | Morse Taper No. |        | Overall Length (L) |     |
|-------|----------|-----------------|--------|--------------------|-----|
|       |          | Outside         | Inside | in                 | mm  |
| 621   | 30422DN  | 2               | 1      | 3.62               | 92  |
| 632   | 30423DN  | 3               | 2      | 4.38               | 111 |
| 631   | 30424N   | 3               | 1      | 3.88               | 99  |
| 643   | 30425DN  | 4               | 3      | 5.50               | 140 |
| 642   | 30426DN  | 4               | 2      | 4.88               | 124 |
| 641   | 30427DN  | 4               | 1      | 4.88               | 124 |
| 654   | 30428DN  | 5               | 4      | 6.69               | 170 |
| 653   | 30429DN  | 5               | 3      | 6.12               | 155 |
| 652   | 30430DN  | 5               | 2      | 6.12               | 155 |
| 664   | 30639N   | 6               | 4      | 8.56               | 217 |
| 665   | 30431DN  | 6               | 5      | 8.56               | 217 |

#### EXTENSION SOCKETS- MORSE TAPER

### Archer® Series 800

#### FEATURES:

- Extend tool lengths and application distances while adapting for increases or decreases in applied tool Morse taper sizes.
- Externally precision ground with hardened tang.
- Outside and inside Morse taper sizes are 1 through 5.

| Model | Part No. | Morse Taper No. |        | Overall Length (L) |     | Socket Length (A) |     | Diameter (D) |    |
|-------|----------|-----------------|--------|--------------------|-----|-------------------|-----|--------------|----|
|       |          | Outside         | Inside | in                 | mm  | in                | mm  | in           | mm |
| 822   | 30446N   | 2               | 2      | 6.89               | 175 | 3.580             | 91  | 1.18         | 30 |
| 823   | 30447DN  | 2               | 3      | 7.72               | 196 | 4.410             | 112 | 1.42         | 36 |
| 832   | 30449DN  | 3               | 2      | 7.64               | 194 | 3.580             | 91  | 1.18         | 30 |
| 833   | 30450DN  | 3               | 3      | 8.46               | 215 | 4.410             | 112 | 1.42         | 36 |
| 834   | 30451DN  | 3               | 4      | 9.45               | 240 | 5.390             | 137 | 1.89         | 48 |
| 843   | 30452N   | 4               | 3      | 9.45               | 240 | 4.410             | 112 | 1.42         | 36 |
| 844   | 30453DN  | 4               | 4      | 10.43              | 265 | 5.390             | 137 | 1.89         | 48 |
| 845   | 30454N   | 4               | 5      | 11.81              | 300 | 6.770             | 172 | 2.48         | 63 |
| 854   | 30455DN  | 5               | 4      | 11.81              | 300 | 5.390             | 137 | 1.89         | 48 |
| 855   | 30456N   | 5               | 5      | 13.19              | 335 | 6.770             | 172 | 2.48         | 63 |

#### EJECTING DRIFTS



| Model | Part No. | For ejection of       |
|-------|----------|-----------------------|
| 902   | 30485N   | No. 1 & 2 Morse Taper |
| 903   | 30486N   | No. 3 & 4 Morse Taper |
| 904   | 30487DN  | No. 4 & 5 Morse Taper |
| 906   | 30488DN  | No. 6 Morse Taper     |

# JACOBS

## POWERTOOL CHUCKS

### MULTI-CRAFT® KEYED CHUCKS

The world's most popular drill chuck for portable power tools. Wide selection to accommodate several applications, such as portable drills and bench top drills.

#### FEATURES:

- Simplicity And Reliability
- Wear Resistant Jaws, Steady Gripping.
- Constructed Of High-Quality Materials For Lasting Life And Performance




| Model    | Part No. (C&K)          | Part No. (Chuck Only)    | Capacity Range |     |     |      | Mount          | Key | Open Length |      | Diameter |      |
|----------|-------------------------|--------------------------|----------------|-----|-----|------|----------------|-----|-------------|------|----------|------|
|          |                         |                          | Min            | Max | Min | Max  |                |     | in          | mm   | in       | mm   |
|          |                         |                          | in             |     | mm  |      |                |     |             |      |          |      |
| 1/4MC    | 30243D <sup>(1)</sup>   | JCM34141 <sup>(3)</sup>  | 0.04           | 1/4 | 1.0 | 6.0  | 3/8-24 UNF     | KG  | 1.58        | 40.0 | 1.13     | 28.9 |
| 3/8MC    | 30247D <sup>(1)</sup>   | JCM32051P <sup>(2)</sup> | 0.04           | 3/8 | 1.0 | 10.0 | 3/8-24 UNF     | KG  | 1.85        | 47.0 | 1.28     | 32.5 |
| 3/8MC    | -                       | JCM32051 <sup>(4)</sup>  | 0.04           | 3/8 | 1.0 | 10.0 | 3/8-24 UNF     | KG  | 1.85        | 47.0 | 1.28     | 32.5 |
| 1/2MC    | 30598 <sup>(1)</sup>    | -                        | 1/16           | 1/2 | 1.5 | 13.0 | 3/8-24 UNF     | KK  | 2.23        | 56.6 | 1.61     | 41.0 |
| 1/2MC    | 30602 <sup>(1)</sup>    | -                        | 1/16           | 1/2 | 1.5 | 13.0 | 1/2-20 UNF     | KK  | 2.23        | 56.6 | 1.61     | 41.0 |
| 1/2MC    | -                       | JCM32116P <sup>(2)</sup> | 1/16           | 1/2 | 1.5 | 13.0 | 3/8-24 UNF     | KK  | 2.23        | 56.6 | 1.61     | 41.0 |
| 1/2MC    | -                       | JCM32116 <sup>(4)</sup>  | 1/16           | 1/2 | 1.5 | 13.0 | 3/8-24 UNF     | KK  | 2.23        | 56.6 | 1.61     | 41.0 |
| 1/2MC    | -                       | JCM32053P <sup>(2)</sup> | 1/16           | 1/2 | 1.5 | 13.0 | 1/2-20 UNF     | KK  | 2.23        | 56.6 | 1.61     | 41.0 |
| 1/2MC    | -                       | JCM32053 <sup>(4)</sup>  | 1/16           | 1/2 | 1.5 | 13.0 | 1/2-20 UNF     | KK  | 2.23        | 56.6 | 1.61     | 41.0 |
| 1/4MC AD | JCM30248 <sup>(1)</sup> | JCM30001P <sup>(2)</sup> | 0.04           | 1/4 | 1.0 | 6.0  | 1/4" Hex Shaft | KG  | -           | -    | 1.13     | 28.9 |
| 1/4MC AD | -                       | JCM30001 <sup>(4)</sup>  | 0.04           | 1/4 | 1.0 | 6.0  | 1/4" Hex Shaft | KG  | -           | -    | 1.13     | 28.9 |

### HAND-TITE® KEYLESS CHUCKS

Patented keyless design, produces greater bit gripping force than conventional keyed chucks.

#### FEATURES:

- Jacobs® Hand-Tite® Technology, quick and easy chuck operation.
- Ergonomic design increases hand tightening efficiency and user comfort.



| Model  | Part No. (Individual Package) | Part No. (Bulk) | Capacity Range |      |     |      | Mount      | Open Length |      | Diameter |      |
|--------|-------------------------------|-----------------|----------------|------|-----|------|------------|-------------|------|----------|------|
|        |                               |                 | Min            | Max  | Min | Max  |            | in          | mm   | in       | mm   |
|        |                               |                 | in             |      | mm  |      |            |             |      |          |      |
| 210-2P | JCM32338P <sup>(2)</sup>      | 32338           | 0.04           | 3/8" | 1.0 | 10.0 | 3/8-24 UNF | 2.181       | 55.4 | 1.681    | 42.7 |

### RATCHET LOCKING KEYLESS CHUCKS

Unique, patented Ratchet Locking mechanism expands keyless chuck performance and convenience, excellent durable clamping force, higher performance of drilling efficiency.

#### FEATURES:

- Jacobs® Patented Ratchet Locking System, Effectively Prevent Chuck Loosening Under High Vibration Applications.
- "Click" Technology, Provides audible and tactile feedback when chuck is properly tightening.
- "Anti-Lock" Technology, Prevents chuck from locking open at max. capacity.
- Professional Or Industrial Use. Applied To High Power DC And AC Drill..



| Model     | Part No. (Individual Package) | Part No. (Bulk) | Capacity Range |      |     |      | Mount          | Open Length |      | Diameter |      |
|-----------|-------------------------------|-----------------|----------------|------|-----|------|----------------|-------------|------|----------|------|
|           |                               |                 | Min            | Max  | Min | Max  |                | in          | mm   | in       | mm   |
|           |                               |                 | in             |      | mm  |      |                |             |      |          |      |
| 510-2H    | 30354 <sup>(1)</sup>          | -               | 0.04"          | 3/8" | 1.0 | 10.0 | 3/8-24 UNF     | 2.174       | 55.4 | 1.782    | 45.3 |
| 510-2H AD | 31248 <sup>(1)</sup>          | -               | 0.04"          | 3/8" | 1.0 | 10.0 | 1/4" Hex Shaft |             |      | 1.782    | 45.3 |
| 513-2P    | JCM32412P <sup>(2)</sup>      | JCM32412        | 1/16"          | 1/2" | 1.5 | 13.0 | 1/2-20 UNF     | 2.545       | 64.6 | 1.681    | 42.7 |
| 513-1M    | JCM33211 <sup>(1)</sup>       | 32638           | 1/16"          | 1/2" | 1.5 | 13.0 | 1/2-20 UNF     | 2.535       | 64.4 | 1.681    | 42.7 |
| 513-2M    | JCM31037 <sup>(1)</sup>       | -               | 1/16"          | 1/2" | 1.5 | 13.0 | 3/8-24 UNF     | 2.545       | 64.6 | 1.681    | 42.7 |
| 513-2M    | JCM31038 <sup>(1)</sup>       | -               | 1/16"          | 1/2" | 1.5 | 13.0 | 1/2-20 UNF     | 2.545       | 64.6 | 1.681    | 42.7 |
| 713-2M    | JCM30373P <sup>(2)</sup>      | JCM30373        | 1/16"          | 1/2" | 1.5 | 13.0 | 1/2-20 UNF     | 2.545       | 64.6 | 1.681    | 42.7 |

(1) Clamshell package

(2) Plastic bag package;

(3) Box package;

(4) Bulk package

# JACOBS

## CHUCK KEYS & ACCESSORIES

### CHUCK KEYS

Comprehensive selection of Jacobs® precision crafted keys meet any need. Choice of models with nickel thumb grips, "T" handles plus self ejecting keys.

| Model No. | Part No.    | Pilot Size | Teeth Number | Handle Type | Package            | Used On   |
|-----------|-------------|------------|--------------|-------------|--------------------|---|
|           |             | in         |              |             |                    |   |
| #9        | B30827      | 13/64      | 11           | T           | Hang Tag           | 1/4 & 3/8" chucks   |
| K0        | JCM3637     | 1/8        | 11           | T           | Bulk               | 0 Series  |
| K0        | JCM3637P    | 1/8        | 11           | T           | Single Plastic Bag |   |
| K0M       | JCM3639     | 1/8        | 11           | T           | Bulk               | Stainless 0M Series   |
| K0M       | JCM3639P    | 1/8        | 11           | T           | Single Plastic Bag |   |
| K1        | JCM3641     | 5/32       | 11           | T           | Bulk               | 1 Series  |
| K1        | JCM3641P20  | 5/32       | 11           | T           | 20pcs/Bag          |   |
| K1        | 30826       | 5/32       | 11           | T           | Hang Tag           |   |
| K1M       | JCM3643     | 5/32       | 11           | T           | Bulk               | Stainless 1M Series   |
| K1M       | JCM3643P    | 5/32       | 11           | T           | Single Plastic Bag |   |
| K2        | JCM3649     | 1/4        | 11           | Thumb       | Bulk               | 2 Series  |
| K2        | JCM3649P20  | 1/4        | 11           | Thumb       | 20pcs/Bag          |   |
| K3        | JCM13700    | 5/16       | 11           | Thumb       | Bulk               | 3, 34 series & 14N  |
| K3        | JCM13700P   | 5/16       | 11           | Thumb       | Single Plastic Bag |   |
| K3        | JCM13700P20 | 5/16       | 11           | Thumb       | 20pcs/Bag          |   |
| K3C       | JCM3653P    | 5/16       | 11           | Thumb       | Single Plastic Bag | 34-33C, 633C  |
| K4        | JCM3655P    | 3/8        | 12           | Thumb       | Single Plastic Bag | 36. 16N, 18N  |
| K4        | JCM3655P20  | 3/8        | 12           | Thumb       | 20pcs/Bag          |   |
| K5        | JCM3657P    | 7/16       | 12           | T           | Single Plastic Bag | 20N   |
| K7        | JCM3659     | 7/32       | 11           | Thumb       | Bulk               | 7 Series  |
| K7        | JCM3659P    | 7/32       | 11           | Thumb       | Single Plastic Bag |   |
| K7        | JCM3659P20  | 7/32       | 11           | Thumb       | 20pcs/Bag          |   |
| K30       | JCM13702    | 15/64      | 10           | Thumb       | Bulk               | 30, 31, 41 series & 8-1/2 N   |
| K30       | JCM13702P20 | 15/64      | 10           | Thumb       | 20pcs/Bag          |   |
| K30       | 30825D      | 15/64      | 10           | Thumb       | Hang Tag           |   |
| K32       | JCM13701    | 1/4        | 10           | Thumb       | Bulk               | 32, 33 series & 11N   |
| K32       | JCM13701P20 | 1/4        | 10           | Thumb       | 20pcs/Bag          |   |
| K32       | 30251       | 1/4        | 10           | Thumb       | Hang Tag           |   |
| K32       | JCM13703    | 1/4        | 10           | T           | Bulk               |   |
| K32       | JCM13703P   | 1/4        | 10           | T           | Single Plastic Bag |   |
| KK        | JCM30052A   | 9/32       | 10           | T           | Bulk               | 1/2MC, MC4K, MC8K, U8K, DC8, SM8, 74K, 76K, 77K, 78K(1/2"), 22BA, 23BA, 24BA, 26BA, 29-33 |
| KK        | JCM30052AP  | 9/32       | 10           | T           | Single Plastic Bag |   |
| KK        | 30250       | 9/32       | 10           | T           | Hang Tag           |   |
| KK        | JCM3607     | 9/32       | 10           | Thumb       | Bulk               |   |
| KK        | JCM3607P    | 9/32       | 10           | Thumb       | Single Plastic Bag |   |
| KG        | JCM31336    | 1/4        | 11           | Thumb       | Bulk               | 1/4 & 3/8 MC, B&D C1 KG series  |
| KG1       | JCM14273A   | 1/4        | 11           | T           | Bulk               | 1/4 & 3/8' Multi-Craft  |
| KG1       | JCM14273AP  | 1/4        | 11           | T           | Single Plastic Bag |   |
| KGA       | JCM3605A    | 1/4        | 11           | L           | Bulk               | 1/4 & 3/8' Multi-Craft  |
| KGA       | JCM3605AP   | 1/4        | 11           | L           | Single Plastic Bag |   |
| KGA       | 30605       | 1/4        | 11           | L           | Hang Tag           |   |



T - Handle



SS - K0M



SS - K1M



Thumb - Handle



T - Handle



L - Handle

# JACOBS

## CHUCK KEYS & ACCESSORIES

### SELF-EJECTING KEYS



Self-ejecting models with spring-loaded ejectors ensure key disengagement after tightening.

| Model No. | Part No. | Pilot Size | Teeth Number | Handle Type | Package            | Used On                               |
|-----------|----------|------------|--------------|-------------|--------------------|---------------------------------------|
|           |          | in         |              |             |                    |                                       |
| S-K3C     | JCM2948  | 5/16       | 11           | Thumb       | Bulk               | 3, 34 series & 14N                    |
| S-K3C     | JCM2948P | 5/16       | 11           | Thumb       | Single Plastic Bag |                                       |
| S-KK      | JCM3157  | 9/32       | 10           | Thumb       | Bulk               | DC8, SM8, 74K, 22BA, 23BA, 24BA, 26BA |
| S-KK      | JCM3157P | 9/32       | 10           | Thumb       | Single Plastic Bag |                                       |

### KEYLEASHES



| Model No. | Part No. | Package            | Used On          |
|-----------|----------|--------------------|------------------|
| Model A   | JCM3001  | Bulk               | K0, K1, K7, KG   |
| Model A   | JCM3001P | Single Plastic Bag |                  |
| Model A   | 30252    | Blister            |                  |
| Model B   | JCM3002  | Bulk               | K30, K32, K2, KK |
| Model B   | JCM3002P | Single Plastic Bag |                  |
| Holder    | JCM30253 | Bulk               | K0, K1, K7, KG   |
| Holder    | 30253DD  | Blister            |                  |

### WEDGE SETS



#### FEATURES:

- For removing taper mount chucks from arbors or chucks.

| Model No.    | Part No. | Used on Jacobs Taper No. |
|--------------|----------|--------------------------|
| #1 wedge set | B13266   | 1JT                      |
| #2 wedge set | B13267   | 2JT                      |
| #6 wedge set | B13269   | 6JT                      |
| #3 wedge set | B13268   | 3JT                      |

### DRAIN CHUCK



#### FEATURES:

- Specifically designed for use with flexible coil spring tools. Allows coil spring to pass through chuck.
- Chuck may be hand tightened to secure coil spring at desired length transmitting tool rotation to shaft.
- Ideal for soil pipe and sewer cleaning tools.

| Model  | Part No. | Capacity Range |      |     |      | Mount    | Open Length |      | Diameter |      |
|--------|----------|----------------|------|-----|------|----------|-------------|------|----------|------|
|        |          | Min            | Max  | Min | Max  |          | in          | mm   | in       | mm   |
|        |          | in             |      | mm  |      |          |             |      |          |      |
| DC4595 | 30726    | 0.25           | 0.50 | 6.4 | 13.0 | 13/16-20 | 2.49        | 63.2 | 1.70     | 43.2 |

