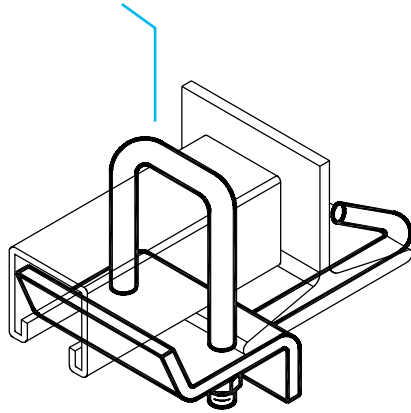


AS 2656 “U” Bolt Beam Clamp with Hook Fig. AS 2656



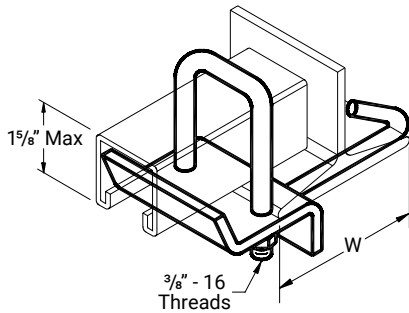
Description

Anvil-Strut Beam Clamps are designed to secure all Anvil-Strut 1 5/8” wide channels, or threaded rod, to beams or supports for the purpose of running piping, conduit or tubing.

For additional Anvil Beam Clamps, refer to the Pipe Hangers and Hardware Section of the website or the Anvil Pipe Hangers and Supports Catalog.

“U” Bolt Beam Clamp with Hook

AS 2656 EG



Catalog No.	Std. Pkg.	Wt./100 Pcs.
AS 2656 T1 6	10	130
AS 2656 T1 12	10	142
AS 2656 T2 6	10	141
AS 2656 T2 12	10	153

Specify 6” or 12” flange width.

T1 Use with AS 200, AS 210, AS 300, AS 400, AS 500, AS 520. T2 Use with AS 100, AS 150, AS 200 BTB.

Std Pkg & Wt/100 pcs: See chart above.

LEGEND:

GR: Powder Coated Supr-Green **EG:** Electro-Galvanized **PG:** Pre-Galvanized **AL:** Aluminum

HG: Hot Dipped Galvanized **PL:** Plain **SS:** Stainless Steel

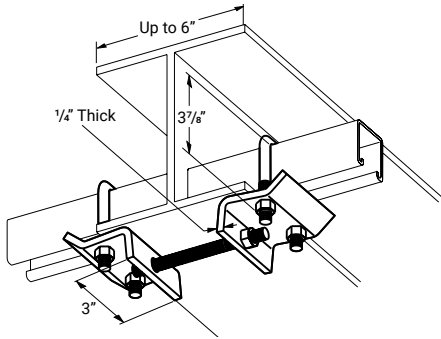
ZTC: Zinc Trivalent Chromium Stainless Steel (**SS**), Zinc Trivalent Chromium (**ZTC**) and Hot Dipped Galvanized (**HG**) are specialty finishes. Pricing is located in the Specialty Strut Section of the Anvil-Strut price book.

PROJECT INFORMATION	APPROVAL STAMP
Project:	Approved
Address:	Approved as noted
Contractor:	Not approved
Engineer:	Remarks:
Submittal Date:	
Notes 1:	
Notes 2:	

AS 2656 “U” Bolt Beam Clamp with Hook Fig. AS 2656

Double “U” Bolt Beam Clamp

AS 2657 EG



Catalog No.	Std. Pkg.	Wt./100 Pcs.
AS 2657 T1 6	10	204
AS 2657 T1 12	10	210
AS 2657 T2 6	10	226
AS 2657 T2 12	10	232

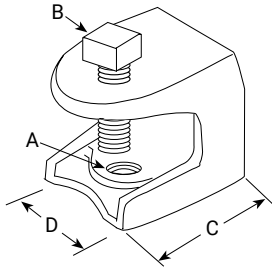
Specify 6” or 12” flange width.

T1 Use with AS 200, AS 210, AS 300, AS 400, AS 500, AS 520. T2 Use with AS 100, AS 150, AS 200 BTB

Std Pkg & Wt/100 pcs: See chart above.

Rod or Insulator Support

AS 85 EG



Rod Size A	Set Screw B	C	D	Load Lbs.	Std. Pkg.	Wt./100 Pcs.
1/4 -20	5/16 -18	1 3/8"	1 3/16"	150	50	24
3/8 -16	1/2 -13	1 7/8"	1 3/16"	350	25	65
1/2 -13	1/2 -13	2 3/8"	2 1/2"	1,000	25	130

Material: Malleable Iron

Application: Rod support for beams with a flange thickness of 1/2" max.

Ordering: Specify part number and rod size

Std Pkg & Wt/100 pcs: See chart above.

LEGEND:

GR: Powder Coated Supr-Green **EG:** Electro-Galvanized **PG:** Pre-Galvanized **AL:** Aluminum

HG: Hot Dipped Galvanized **PL:** Plain **SS:** Stainless Steel

ZTC: Zinc Trivalent Chromium Stainless Steel (**SS**), Zinc Trivalent Chromium (**ZTC**) and Hot Dipped Galvanized (**HG**) are specialty finishes. Pricing is located in the Specialty Strut Section of the Anvil-Strut price book.