



ASME B18.8.2

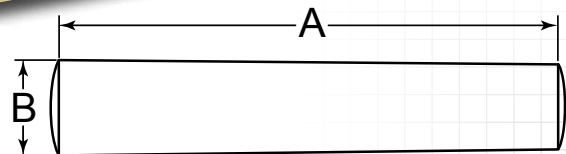
STANDARD – IMPERIAL

DESCRIPTION

Solid cylindrical pin that has a uniform taper (1/4" per 12") that runs the entire length of the pin. Taper pins are held in place by dry friction making them easy to install and cost effective.

HOW TO IDENTIFY

1. Verify solid pin with uniform taper (1:48).
2. Measure large end diameter (B).
3. Measure the length (A).
4. Find the part in the chart below.



PREFIX MATERIAL/FINISH

TP = CARBON STEEL, PLAIN*
 TPS = STAINLESS STEEL, PLAIN
 TPS16 = 316 STAINLESS STEEL, PLAIN
 Material/finish combinations may not be available in all sizes.

ADDITIONAL SIZES AND FINISHES MAY BE AVAILABLE UPON REQUEST

ITEM NUMBER	(A) OVERALL LENGTH +.010/- .010"
#7/0 Pin Number	
(B) Outside Diameter: .063" (1/16) +.001/-.001"	
PREFIX-70-0250	.250" (1/4)
PREFIX-70-0375	.375" (3/8)
PREFIX-70-0500	.500" (1/2)
PREFIX-70-0625	.625" (5/8)
PREFIX-70-0750	.750" (3/4)
PREFIX-70-0875	.875" (7/8)
PREFIX-70-1000	1.000" (1)
PREFIX-70-1250	1.250" (1-1/4)
PREFIX-70-1500	1.500" (1-1/2)

ITEM NUMBER	(A) OVERALL LENGTH +.010/- .010"
#6/0 Pin Number	
(B) Outside Diameter: .078" (5/64) +.001/-.001"	
PREFIX-60-0250	.250" (1/4)
PREFIX-60-0375	.375" (3/8)
PREFIX-60-0500	.500" (1/2)
PREFIX-60-0625	.625" (5/8)
PREFIX-60-0750	.750" (3/4)
PREFIX-60-0875	.875" (7/8)
PREFIX-60-1000	1.000" (1)
PREFIX-60-1250	1.250" (1-1/4)

ITEM NUMBER	(A) OVERALL LENGTH +.010/- .010"
PREFIX-60-1500	1.500" (1-1/2)
#5/0 Pin Number	
(B) Outside Diameter: .094" (3/32) +.001/-.001"	
PREFIX-50-0250	.250" (1/4)
PREFIX-50-0375	.375" (3/8)
PREFIX-50-0437	.438" (7/16)
PREFIX-50-0500	.500" (1/2)
PREFIX-50-0562	.563" (9/16)
PREFIX-50-0625	.625" (5/8)
PREFIX-50-0750	.750" (3/4)
PREFIX-50-0875	.875" (7/8)
PREFIX-50-1000	1.000" (1)
PREFIX-50-1250	1.250" (1-1/4)
PREFIX-50-1500	1.500" (1-1/2)
PREFIX-50-2500	2.500" (2-1/2)

ITEM NUMBER	(A) OVERALL LENGTH +.010/- .010"
#4/0 Pin Number	
(B) Outside Diameter: .109" (7/64) +.001/-.001"	
PREFIX-40-0250	.250" (1/4)
PREFIX-40-0375	.375" (3/8)
PREFIX-40-0500	.500" (1/2)
PREFIX-40-0562	.563" (9/16)

ITEM NUMBER	(A) OVERALL LENGTH +.010/- .010"
PREFIX-40-0625	.625" (5/8)
PREFIX-40-0750	.750" (3/4)
PREFIX-40-0875	.875" (7/8)
PREFIX-40-1000	1.000" (1)
PREFIX-40-1250	1.250" (1-1/4)
PREFIX-40-1500	1.500" (1-1/2)
PREFIX-40-1750	1.750" (1-3/4)
PREFIX-40-2000	2.000" (2)
PREFIX-40-2250	2.250" (2-1/4)
PREFIX-40-2500	2.500" (2-1/2)
PREFIX-40-2750	2.750" (2-3/4)
PREFIX-40-3000	3.000" (3)

ITEM NUMBER	(A) OVERALL LENGTH +.010/- .010"
#3/0 Pin Number	
(B) Outside Diameter: .125" (1/8) +.001/-.001"	
PREFIX-30-0250	.250" (1/4)
PREFIX-30-0375	.375" (3/8)
PREFIX-30-0500	.500" (1/2)
PREFIX-30-0625	.625" (5/8)
PREFIX-30-0750	.750" (3/4)
PREFIX-30-0875	.875" (7/8)
PREFIX-30-1000	1.000" (1)
PREFIX-30-1250	1.250" (1-1/4)
PREFIX-30-1500	1.500" (1-1/2)

FOR DETAILED SPECIFICATIONS AND TOLERANCES, VISIT HUYETT.COM.

Prices, materials, dimensions, tolerances, designs, and grades subject to change without notice. © 2015 G.L. Huyett

*Limited warranty for surface finish: 30 days from date of shipment. See page 8 for details.

TAPER PINS

HUYETT.COM • 785-392-3017

BOX 232 • MINNEAPOLIS, KS • 67467
SALES@HUYETT.COM • FAX 785-392-2845

STANDARD – IMPERIAL

ASME B18.8.2

ITEM NUMBER	(A) OVERALL LENGTH +.010/- .010"
-------------	--

#3/0

Pin Number

(B) Outside Diameter: .125" (1/8) +.001/- .001"

PREFIX-30-1750	1.750" (1-3/4)
PREFIX-30-2000	2.000" (2)
PREFIX-30-2250	2.250" (2-1/4)
PREFIX-30-2500	2.500" (2-1/2)
PREFIX-30-2750	2.750" (2-3/4)
PREFIX-30-3000	3.000" (3)
PREFIX-30-3250	3.250" (3-1/4)

#2/0

Pin Number

(B) Outside Diameter: .141" (9/64) +.001/- .001"

PREFIX-20-0500	.500" (1/2)
PREFIX-20-0625	.625" (5/8)
PREFIX-20-0750	.750" (3/4)
PREFIX-20-0875	.875" (7/8)
PREFIX-20-1000	1.000" (1)
PREFIX-20-1125	1.125" (1-1/8)
PREFIX-20-1250	1.250" (1-1/4)
PREFIX-20-1500	1.500" (1-1/2)
PREFIX-20-1750	1.750" (1-3/4)
PREFIX-20-2000	2.000" (2)
PREFIX-20-2250	2.250" (2-1/4)
PREFIX-20-2500	2.500" (2-1/2)
PREFIX-20-2750	2.750" (2-3/4)
PREFIX-20-3000	3.000" (3)
PREFIX-20-3250	3.250" (3-1/4)
PREFIX-20-3500	3.500" (3-1/2)
PREFIX-20-3750	3.750" (3-3/4)
PREFIX-20-4000	4.000" (4)

#0

Pin Number

(B) Outside Diameter: .156" (5/32) +.001/- .001"

PREFIX-00-0500	.500" (1/2)
PREFIX-00-0625	.625" (5/8)
PREFIX-00-0750	.750" (3/4)
PREFIX-00-0875	.875" (7/8)
PREFIX-00-1000	1.000" (1)
PREFIX-00-1250	1.250" (1-1/4)
PREFIX-00-1500	1.500" (1-1/2)
PREFIX-00-1750	1.750" (1-3/4)
PREFIX-00-2000	2.000" (2)
PREFIX-00-2250	2.250" (2-1/4)
PREFIX-00-2500	2.500" (2-1/2)
PREFIX-00-2750	2.750" (2-3/4)
PREFIX-00-3000	3.000" (3)
PREFIX-00-3250	3.250" (3-1/4)
PREFIX-00-3500	3.500" (3-1/2)
PREFIX-00-3750	3.750" (3-3/4)

ITEM NUMBER	(A) OVERALL LENGTH +.010/- .010"
-------------	--

#1

Pin Number

(B) Outside Diameter: .172" (11/64) +.001/- .001"

PREFIX-01-0750	.750" (3/4)
PREFIX-01-0875	.875" (7/8)
PREFIX-01-1000	1.000" (1)
PREFIX-01-1250	1.250" (1-1/4)
PREFIX-01-1375	1.375" (1-3/8)
PREFIX-01-1500	1.500" (1-1/2)
PREFIX-01-1750	1.750" (1-3/4)
PREFIX-01-2000	2.000" (2)
PREFIX-01-2250	2.250" (2-1/4)
PREFIX-01-2500	2.500" (2-1/2)
PREFIX-01-2750	2.750" (2-3/4)
PREFIX-01-3000	3.000" (3)
PREFIX-01-3250	3.250" (3-1/4)
PREFIX-01-3500	3.500" (3-1/2)
PREFIX-01-3750	3.750" (3-3/4)
PREFIX-01-4000	4.000" (4)

#2

Pin Number

(B) Outside Diameter: .193" +.001/- .001"

PREFIX-02-0750	.750" (3/4)
PREFIX-02-0875	.875" (7/8)
PREFIX-02-1000	1.000" (1)
PREFIX-02-1250	1.250" (1-1/4)
PREFIX-02-1500	1.500" (1-1/2)
PREFIX-02-1750	1.750" (1-3/4)
PREFIX-02-2000	2.000" (2)
PREFIX-02-2250	2.250" (2-1/4)
PREFIX-02-2500	2.500" (2-1/2)
PREFIX-02-2750	2.750" (2-3/4)
PREFIX-02-3000	3.000" (3)
PREFIX-02-3250	3.250" (3-1/4)
PREFIX-02-3500	3.500" (3-1/2)
PREFIX-02-3750	3.750" (3-3/4)
PREFIX-02-4000	4.000" (4)
PREFIX-02-6000	6.000" (6)

#3

Pin Number

(B) Outside Diameter: .219" (7/32) +.001/- .001"

PREFIX-03-0750	.750" (3/4)
PREFIX-03-0875	.875" (7/8)
PREFIX-03-1000	1.000" (1)
PREFIX-03-1250	1.250" (1-1/4)
PREFIX-03-1500	1.500" (1-1/2)
PREFIX-03-1750	1.750" (1-3/4)
PREFIX-03-2000	2.000" (2)
PREFIX-03-2250	2.250" (2-1/4)

ITEM NUMBER	(A) OVERALL LENGTH +.010/- .010"
-------------	--

PREFIX-03-2500	2.500" (2-1/2)
PREFIX-03-2750	2.750" (2-3/4)
PREFIX-03-3000	3.000" (3)
PREFIX-03-3250	3.250" (3-1/4)
PREFIX-03-3500	3.500" (3-1/2)
PREFIX-03-3750	3.750" (3-3/4)
PREFIX-03-4000	4.000" (4)
PREFIX-03-4250	4.250" (4-1/4)
PREFIX-03-4500	4.500" (4-1/2)
PREFIX-03-4750	4.750" (4-3/4)
PREFIX-03-5000	5.000" (5)
PREFIX-03-6000	6.000" (6)

#4

Pin Number

(B) Outside Diameter: .250" (1/4) +.001/- .001"

PREFIX-04-0750	.750" (3/4)
PREFIX-04-0875	.875" (7/8)
PREFIX-04-1000	1.000" (1)
PREFIX-04-1250	1.250" (1-1/4)
PREFIX-04-1500	1.500" (1-1/2)
PREFIX-04-1750	1.750" (1-3/4)
PREFIX-04-2000	2.000" (2)
PREFIX-04-2250	2.250" (2-1/4)
PREFIX-04-2500	2.500" (2-1/2)
PREFIX-04-2750	2.750" (2-3/4)
PREFIX-04-3000	3.000" (3)
PREFIX-04-3250	3.250" (3-1/4)
PREFIX-04-3500	3.500" (3-1/2)
PREFIX-04-3750	3.750" (3-3/4)
PREFIX-04-4000	4.000" (4)
PREFIX-04-4250	4.250" (4-1/4)
PREFIX-04-4500	4.500" (4-1/2)
PREFIX-04-4750	4.750" (4-3/4)
PREFIX-04-5000	5.000" (5)
PREFIX-04-5250	5.250" (5-1/4)
PREFIX-04-5500	5.500" (5-1/2)
PREFIX-04-5750	5.750" (5-3/4)
PREFIX-04-6000	6.000" (6)

#5

Pin Number

(B) Outside Diameter: .289" +.001/- .001"

PREFIX-05-0750	.750" (3/4)
PREFIX-05-0875	.875" (7/8)
PREFIX-05-1000	1.000" (1)
PREFIX-05-1250	1.250" (1-1/4)
PREFIX-05-1500	1.500" (1-1/2)
PREFIX-05-1750	1.750" (1-3/4)
PREFIX-05-2000	2.000" (2)
PREFIX-05-2250	2.250" (2-1/4)
PREFIX-05-2500	2.500" (2-1/2)
PREFIX-05-2750	2.750" (2-3/4)

FOR DETAILED SPECIFICATIONS AND TOLERANCES, VISIT HUYETT.COM.

Prices, materials, dimensions, tolerances, designs, and grades subject to change without notice. © 2015 G.L. Huyett

*Limited warranty for surface finish: 30 days from date of shipment. See page 8 for details.



ASME B18.8.2

STANDARD – IMPERIAL

ITEM NUMBER	(A) OVERALL LENGTH +.010/-0.010"
PREFIX-05-2875	2.875" (2-7/8)
PREFIX-05-3000	3.000" (3)
PREFIX-05-3250	3.250" (3-1/4)
PREFIX-05-3500	3.500" (3-1/2)
PREFIX-05-3750	3.750" (3-3/4)
PREFIX-05-4000	4.000" (4)
PREFIX-05-4250	4.250" (4-1/4)
PREFIX-05-4500	4.500" (4-1/2)
PREFIX-05-4750	4.750" (4-3/4)
PREFIX-05-5000	5.000" (5)
PREFIX-05-5250	5.250" (5-1/4)
PREFIX-05-5500	5.500" (5-1/2)
PREFIX-05-5750	5.750" (5-3/4)
PREFIX-05-6000	6.000" (6)
PREFIX-05-6500	6.500" (6-1/2)
PREFIX-05-7000	7.000" (7)

#6 Pin Number	
(B) Outside Diameter: .341" +.001/-0.001"	
PREFIX-06-0500	.500" (1/2)
PREFIX-06-0750	.750" (3/4)
PREFIX-06-1000	1.000" (1)
PREFIX-06-1250	1.250" (1-1/4)
PREFIX-06-1500	1.500" (1-1/2)
PREFIX-06-1750	1.750" (1-3/4)
PREFIX-06-2000	2.000" (2)
PREFIX-06-2250	2.250" (2-1/4)
PREFIX-06-2500	2.500" (2-1/2)
PREFIX-06-2750	2.750" (2-3/4)
PREFIX-06-2875	2.875" (2-7/8)
PREFIX-06-3000	3.000" (3)
PREFIX-06-3250	3.250" (3-1/4)
PREFIX-06-3500	3.500" (3-1/2)
PREFIX-06-3750	3.750" (3-3/4)
PREFIX-06-4000	4.000" (4)
PREFIX-06-4250	4.250" (4-1/4)
PREFIX-06-4500	4.500" (4-1/2)
PREFIX-06-4750	4.750" (4-3/4)
PREFIX-06-5000	5.000" (5)
PREFIX-06-5250	5.250" (5-1/4)
PREFIX-06-5500	5.500" (5-1/2)
PREFIX-06-5750	5.750" (5-3/4)
PREFIX-06-6000	6.000" (6)
PREFIX-06-6250	6.250" (6-1/4)
PREFIX-06-6500	6.500" (6-1/2)
PREFIX-06-6750	6.750" (6-3/4)
PREFIX-06-7000	7.000" (7)

ITEM NUMBER	(A) OVERALL LENGTH +.010/-0.010"
#7 Pin Number	
(B) Outside Diameter: .409" +.001/-0.001"	
PREFIX-07-1000	1.000" (1)
PREFIX-07-1250	1.250" (1-1/4)
PREFIX-07-1500	1.500" (1-1/2)
PREFIX-07-1750	1.750" (1-3/4)
PREFIX-07-2000	2.000" (2)
PREFIX-07-2250	2.250" (2-1/4)
PREFIX-07-2500	2.500" (2-1/2)
PREFIX-07-2750	2.750" (2-3/4)
PREFIX-07-3000	3.000" (3)
PREFIX-07-3250	3.250" (3-1/4)
PREFIX-07-3500	3.500" (3-1/2)
PREFIX-07-3750	3.750" (3-3/4)
PREFIX-07-4000	4.000" (4)
PREFIX-07-4250	4.250" (4-1/4)
PREFIX-07-4500	4.500" (4-1/2)
PREFIX-07-4750	4.750" (4-3/4)
PREFIX-07-5000	5.000" (5)
PREFIX-07-5250	5.250" (5-1/4)
PREFIX-07-5500	5.500" (5-1/2)
PREFIX-07-5750	5.750" (5-3/4)
PREFIX-07-6000	6.000" (6)
PREFIX-07-6250	6.250" (6-1/4)
PREFIX-07-6500	6.500" (6-1/2)
PREFIX-07-6750	6.750" (6-3/4)
PREFIX-07-7000	7.000" (7)

#8 Pin Number	
(B) Outside Diameter: .492" +.001/-0.001"	
PREFIX-08-1000	1.000" (1)
PREFIX-08-1250	1.250" (1-1/4)
PREFIX-08-1500	1.500" (1-1/2)
PREFIX-08-1750	1.750" (1-3/4)
PREFIX-08-2000	2.000" (2)
PREFIX-08-2250	2.250" (2-1/4)
PREFIX-08-2500	2.500" (2-1/2)
PREFIX-08-2750	2.750" (2-3/4)
PREFIX-08-3000	3.000" (3)
PREFIX-08-3250	3.250" (3-1/4)
PREFIX-08-3500	3.500" (3-1/2)
PREFIX-08-3750	3.750" (3-3/4)
PREFIX-08-4000	4.000" (4)
PREFIX-08-4250	4.250" (4-1/4)
PREFIX-08-4500	4.500" (4-1/2)
PREFIX-08-4750	4.750" (4-3/4)
PREFIX-08-5000	5.000" (5)
PREFIX-08-5250	5.250" (5-1/4)
PREFIX-08-5500	5.500" (5-1/2)
PREFIX-08-5750	5.750" (5-3/4)

ITEM NUMBER	(A) OVERALL LENGTH +.010/-0.010"
PREFIX-08-6000	6.000" (6)
PREFIX-08-6250	6.250" (6-1/4)
PREFIX-08-6500	6.500" (6-1/2)
PREFIX-08-6750	6.750" (6-3/4)
PREFIX-08-7000	7.000" (7)
PREFIX-08-8000	8.000" (8)
PREFIX-08-9000	8.000" (8)
PREFIX-08-10000	10.000" (10)

#9 Pin Number	
(B) Outside Diameter: .591" +.001/-0.001"	
PREFIX-09-1000	1.000" (1)
PREFIX-09-1250	1.250" (1-1/4)
PREFIX-09-1500	1.500" (1-1/2)
PREFIX-09-1750	1.750" (1-3/4)
PREFIX-09-2000	2.000" (2)
PREFIX-09-2250	2.250" (2-1/4)
PREFIX-09-2500	2.500" (2-1/2)
PREFIX-09-2750	2.750" (2-3/4)
PREFIX-09-3000	3.000" (3)
PREFIX-09-3250	3.250" (3-1/4)
PREFIX-09-3500	3.500" (3-1/2)
PREFIX-09-3750	3.750" (3-3/4)
PREFIX-09-4000	4.000" (4)
PREFIX-09-4250	4.250" (4-1/4)
PREFIX-09-4500	4.500" (4-1/2)
PREFIX-09-4750	4.750" (4-3/4)
PREFIX-09-5000	5.000" (5)
PREFIX-09-5250	5.250" (5-1/4)
PREFIX-09-5500	5.500" (5-1/2)
PREFIX-09-5750	5.750" (5-3/4)
PREFIX-09-6000	6.000" (6)
PREFIX-09-6250	6.250" (6-1/4)
PREFIX-09-6500	6.500" (6-1/2)
PREFIX-09-6750	6.750" (6-3/4)
PREFIX-09-7000	7.000" (7)

#10 Pin Number	
(B) Outside Diameter: .706" +.001/-0.001"	
PREFIX-10-1000	1.000" (1)
PREFIX-10-1250	1.250" (1-1/4)
PREFIX-10-1500	1.500" (1-1/2)
PREFIX-10-1750	1.750" (1-3/4)
PREFIX-10-2000	2.000" (2)
PREFIX-10-2250	2.250" (2-1/4)
PREFIX-10-2500	2.500" (2-1/2)
PREFIX-10-2750	2.750" (2-3/4)
PREFIX-10-3000	3.000" (3)
PREFIX-10-3250	3.250" (3-1/4)
PREFIX-10-3500	3.500" (3-1/2)
PREFIX-10-3750	3.750" (3-3/4)

FOR DETAILED SPECIFICATIONS AND TOLERANCES, VISIT HUYETT.COM.

Prices, materials, dimensions, tolerances, designs, and grades subject to change without notice. © 2015 G.L. Huyett

*Limited warranty for surface finish: 30 days from date of shipment. See page 8 for details.

TAPER PINS

HUYETT.COM • 785-392-3017

BOX 232 • MINNEAPOLIS, KS • 67467
SALES@HUYETT.COM • FAX 785-392-2845

STANDARD – IMPERIAL

ASME B18.8.2

ITEM NUMBER	(A) OVERALL LENGTH +.010/- .010"
-------------	--

#10

Pin Number

(B) Outside Diameter: .706" +.001/- .001"

PREFIX-10-4000	4.000" (4)
PREFIX-10-4250	4.250" (4-1/4)
PREFIX-10-4500	4.500" (4-1/2)
PREFIX-10-4750	4.750" (4-3/4)
PREFIX-10-5000	5.000" (5)
PREFIX-10-5250	5.250" (5-1/4)
PREFIX-10-5500	5.500" (5-1/2)
PREFIX-10-5750	5.750" (5-3/4)
PREFIX-10-6000	6.000" (6)
PREFIX-10-6250	6.250" (6-1/4)
PREFIX-10-6500	6.500" (6-1/2)
PREFIX-10-6750	6.750" (6-3/4)
PREFIX-10-7000	7.000" (7)
PREFIX-10-7500	7.500" (7-1/2)
PREFIX-10-8000	8.000" (8)
PREFIX-10-9000	9.000" (9)
PREFIX-10-10000	10.000" (10)

#11*

Pin Number

(B) Outside Diameter: .866" +.001/- .001"

PREFIX-11-1000	1.000" (1)
PREFIX-11-1250	1.250" (1-1/4)
PREFIX-11-1500	1.500" (1-1/2)
PREFIX-11-1750	1.750" (1-3/4)
PREFIX-11-2000	2.000" (2)
PREFIX-11-2250	2.250" (2-1/4)
PREFIX-11-2500	2.500" (2-1/2)
PREFIX-11-2750	2.750" (2-3/4)
PREFIX-11-3000	3.000" (3)
PREFIX-11-3250	3.250" (3-1/4)
PREFIX-11-3500	3.500" (3-1/2)
PREFIX-11-3750	3.750" (3-3/4)
PREFIX-11-4000	4.000" (4)
PREFIX-11-4250	4.250" (4-1/4)
PREFIX-11-4500	4.500" (4-1/2)
PREFIX-11-4750	4.750" (4-3/4)
PREFIX-11-5000	5.000" (5)
PREFIX-11-5250	5.250" (5-1/4)
PREFIX-11-5500	5.500" (5-1/2)
PREFIX-11-5750	5.750" (5-3/4)
PREFIX-11-6000	6.000" (6)
PREFIX-11-6500	6.500" (6-1/2)
PREFIX-11-7000	7.000" (7)
PREFIX-11-7500	7.500" (7-1/2)
PREFIX-11-8000	8.000" (8)
PREFIX-11-9000	9.000" (9)
PREFIX-11-10000	10.000" (10)
PREFIX-11-11000	11.000" (11)

ITEM NUMBER	(A) OVERALL LENGTH +.010/- .010"
-------------	--

#12*

Pin Number

(B) Outside Diameter: 1.032" +.001/- .001"

PREFIX-12-1000	1.000" (1)
PREFIX-12-1250	1.250" (1-1/4)
PREFIX-12-1500	1.500" (1-1/2)
PREFIX-12-1750	1.750" (1-3/4)
PREFIX-12-2000	2.000" (2)
PREFIX-12-2250	2.250" (2-1/4)
PREFIX-12-2500	2.500" (2-1/2)
PREFIX-12-2750	2.750" (2-3/4)
PREFIX-12-3000	3.000" (3)
PREFIX-12-3250	3.250" (3-1/4)
PREFIX-12-3500	3.500" (3-1/2)
PREFIX-12-3750	3.750" (3-3/4)
PREFIX-12-4000	4.000" (4)
PREFIX-12-4250	4.250" (4-1/4)
PREFIX-12-4500	4.500" (4-1/2)
PREFIX-12-4750	4.750" (4-3/4)
PREFIX-12-5000	5.000" (5)
PREFIX-12-5250	5.250" (5-1/4)
PREFIX-12-5500	5.500" (5-1/2)
PREFIX-12-5750	5.750" (5-3/4)
PREFIX-12-6000	6.000" (6)
PREFIX-12-6500	6.500" (6-1/2)
PREFIX-12-7000	7.000" (7)
PREFIX-12-7500	7.500" (7-1/2)
PREFIX-12-8000	8.000" (8)
PREFIX-12-9000	9.000" (9)
PREFIX-12-10000	10.000" (10)
PREFIX-12-11000	11.000" (11)
PREFIX-12-12000	12.000" (12)

#13*

Pin Number

(B) Outside Diameter: 1.241" +.001/- .001"

PREFIX-13-1000	1.000" (1)
PREFIX-13-1250	1.250" (1-1/4)
PREFIX-13-1500	1.500" (1-1/2)
PREFIX-13-1750	1.750" (1-3/4)
PREFIX-13-2000	2.000" (2)
PREFIX-13-2250	2.250" (2-1/4)
PREFIX-13-2500	2.500" (2-1/2)
PREFIX-13-2750	2.750" (2-3/4)
PREFIX-13-3000	3.000" (3)
PREFIX-13-3250	3.250" (3-1/4)
PREFIX-13-3500	3.500" (3-1/2)
PREFIX-13-3750	3.750" (3-3/4)
PREFIX-13-4000	4.000" (4)
PREFIX-13-4250	4.250" (4-1/4)
PREFIX-13-4500	4.500" (4-1/2)

ITEM NUMBER	(A) OVERALL LENGTH +.010/- .010"
-------------	--

PREFIX-13-4750	4.750" (4-3/4)
PREFIX-13-5000	5.000" (5)
PREFIX-13-5250	5.250" (5-1/4)
PREFIX-13-5500	5.500" (5-1/2)
PREFIX-13-5750	5.750" (5-3/4)
PREFIX-13-6000	6.000" (6)
PREFIX-13-6500	6.500" (6-1/2)
PREFIX-13-7000	7.000" (7)
PREFIX-13-7500	7.500" (7-1/2)
PREFIX-13-8000	8.000" (8)
PREFIX-13-9000	9.000" (9)
PREFIX-13-9750	9.750" (9-3/4)
PREFIX-13-10000	10.000" (10)
PREFIX-13-11000	11.000" (11)
PREFIX-13-12000	12.000" (12)

#14*

Pin Number

(B) Outside Diameter: 1.523" +.001/- .001"

PREFIX-14-1000	1.000" (1)
PREFIX-14-1250	1.250" (1-1/4)
PREFIX-14-1500	1.500" (1-1/2)
PREFIX-14-1750	1.750" (1-3/4)
PREFIX-14-2000	2.000" (2)
PREFIX-14-2250	2.250" (2-1/4)
PREFIX-14-2500	2.500" (2-1/2)
PREFIX-14-2750	2.750" (2-3/4)
PREFIX-14-3000	3.000" (3)
PREFIX-14-3250	3.250" (3-1/4)
PREFIX-14-3500	3.500" (3-1/2)
PREFIX-14-3750	3.750" (3-3/4)
PREFIX-14-4000	4.000" (4)
PREFIX-14-4250	4.250" (4-1/4)
PREFIX-14-4500	4.500" (4-1/2)
PREFIX-14-4750	4.750" (4-3/4)
PREFIX-14-5000	5.000" (5)
PREFIX-14-5250	5.250" (5-1/4)
PREFIX-14-5500	5.500" (5-1/2)
PREFIX-14-5750	5.750" (5-3/4)
PREFIX-14-6000	6.000" (6)
PREFIX-14-6500	6.500" (6-1/2)
PREFIX-14-7000	7.000" (7)
PREFIX-14-7500	7.500" (7-1/2)
PREFIX-14-8000	8.000" (8)
PREFIX-14-9000	9.000" (9)
PREFIX-14-10000	10.000" (10)
PREFIX-14-11000	11.000" (11)
PREFIX-14-12000	12.000" (12)

* ASME B18.8.2 not applicable to Standard Taper Pins sizes #11 – #14

FOR DETAILED SPECIFICATIONS AND TOLERANCES, VISIT HUYETT.COM.

Prices, materials, dimensions, tolerances, designs, and grades subject to change without notice. © 2015 G.L. Huyett

*Limited warranty for surface finish: 30 days from date of shipment. See page 8 for details.