

1/4"-28 SAE-LT

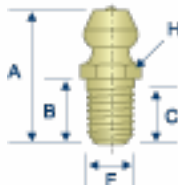
EXCEEDS 12 HR SALT SPRAY.
8,000 PSI MAX PRESSURE

SAE J534

Extended shank lengths are suited for deep seated bearings, or where materials are exceedingly thick. The extended shank allows for the placement of fittings into recessed areas. 1/4"-28 SAE-LT threads are also referred to as 1/4"-28 taper threads.

HI652

Straight
1/4"-28 Taper Thread
Long Shank

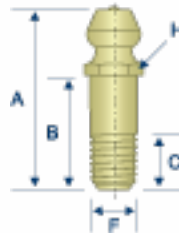


▲ 1652-B
L 5013
JD1803

✦ AVAILABLE IN STAINLESS

HI680

Straight
1/4"-28 Taper Thread
Extra Long Shank

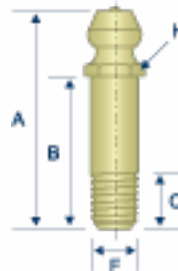


▲ 1680-B
L 5014
JD1819

✦ AVAILABLE IN STAINLESS

HI698

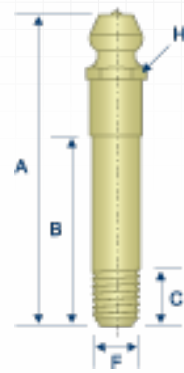
Straight
1/4"-28 Taper Thread
Super Long Shank



▲ 1698-B
JD1813

H3014

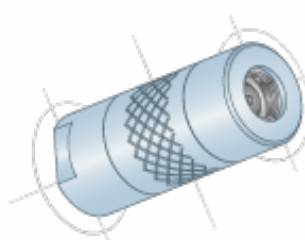
Straight
1/4"-28 Taper Thread
Ultra Long Shank



▲ 3014-B
JD5814

ITEM #	THREAD	ANGLE (E)	OVERALL LENGTH (A)	SHANK LENGTH (B)	MIN. THREAD LENGTH (C)	OVERALL WIDTH (D)	THREAD DIAMETER (F)	SWING CLEARANCE (G)	HEX (H)
HI652	✦ 1/4"-28	STRAIGHT	.69"	.34"	.20"	□	.25"	□	5/16"
HI680	✦ 1/4"-28	STRAIGHT	.92"	.60"	.25"	□	.25"	□	5/16"
HI698	✦ 1/4"-28	STRAIGHT	1.12"	.81"	.20"	□	.25"	□	5/16"
H3014	1/4"-28	STRAIGHT	1.64"	1.00"	.20"	□	.25"	□	5/16"

CUSTOMERS ALSO BOUGHT



COUPLERS

OUR COMPLETE LINE
BEGINS ON PAGE 118

✦ Common Parts
Parts with this designation
are in wide distribution.

▲ Alemite®
Alemite® is a registered trademark of
Alemite, LLC, Johnson City, TN, USA.

L Lincoln Industrial®
Lincoln Industrial® is a registered trademark
of Lincoln Industrial (USA) Corp.

JD John Deere®
John Deere® is a registered trademark of
Deere and Company, Moline, Illinois.

All manufacturer names and numbers are for cross reference identification purposes only. In no way are we implying that our parts were made by the manufacturers listed. Prices, materials, dimensions, tolerances, designs and grades subject to change without notice. © G.L. Huyett 2011