

M8 - POPULAR

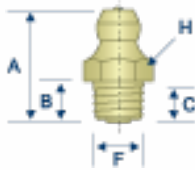
EXCEEDS 12 HR SALT SPRAY.
8,000 PSI MAX PRESSURE

DIN 71412

8.0 mm threads are commonly used in standard-duty applications, such as on cars and light trucks. Many thread sizes are available in extra-fine, fine, coarse and extra-coarse thread. Please visit our Thread Guide on pages 6-9 for more information on metric threads.

H2103

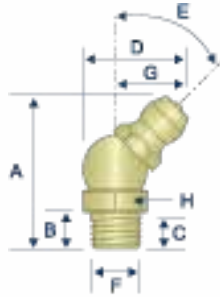
Straight
M8 x 1.0 Taper Thread
Standard Shank



2103 AVAILABLE IN STAINLESS
5178

H2104

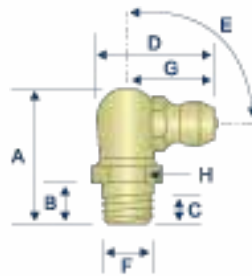
45° Angle
M8 x 1.0 Taper Thread
Standard Shank



5179 AVAILABLE IN STAINLESS

H2105

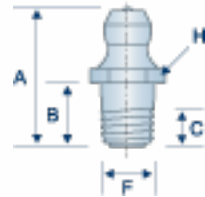
90° Angle
M8 x 1.0 Taper Thread
Standard Shank



2105 AVAILABLE IN STAINLESS
5180

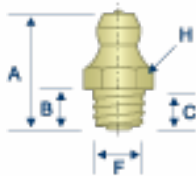
H2193

Straight
M8 x 1.0 Taper Thread
Long Shank



H2112

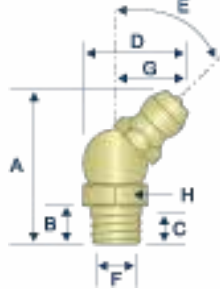
Straight
M8 x 1.25 Taper Thread
Standard Shank



AVAILABLE IN STAINLESS

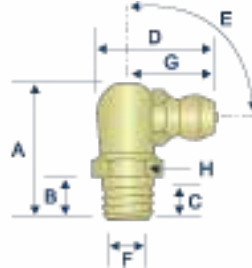
H2113

45° Angle
M8 x 1.25 Taper Thread
Standard Shank



H2114

90° Angle
M8 x 1.25 Taper Thread
Standard Shank



AVAILABLE IN STAINLESS

SPECIAL PARTS

LOOKING FOR
SOMETHING SPECIAL?

CALL THE
G.L. HUYETT SALES
TEAM, AND WE WILL
MAKE YOUR PART TO
YOUR SPECIFICATIONS!

ITEM #	THREAD	ANGLE (E)	OVERALL LENGTH (A)	SHANK LENGTH (B)	MIN. THREAD LENGTH (C)	OVERALL WIDTH (D)	THREAD DIAMETER (F)	SWING CLEARANCE (G)	HEX (H)
H2103 *	M8 x 1.0	STRAIGHT	16.0 MM	5.5 MM	3.1 MM	□	8.0 MM	□	9.0 MM
H2104 *	M8 x 1.0	45°	21.0 MM	5.5 MM	3.1 MM	14.0 MM	8.0 MM	9.8 MM	9.0 MM
H2105 *	M8 x 1.0	90°	18.0 MM	5.5 MM	3.1 MM	16.0 MM	8.0 MM	12.0 MM	9.0 MM
H2193	M8 x 1.0	STRAIGHT	18.5 MM	8.5 MM	4.0 MM	□	8.0 MM	□	9.0 MM
H2112	M8 x 1.25	STRAIGHT	17.0 MM	5.5 MM	3.1 MM	□	8.0 MM	□	9.0 MM
H2113	M8 x 1.25	45°	21.0 MM	5.5 MM	3.1 MM	14.0 MM	8.0 MM	9.8 MM	9.0 MM
H2114	M8 x 1.25	90°	18.0 MM	5.5 MM	3.1 MM	16.0 MM	8.0 MM	12.0 MM	9.0 MM

Common Parts
Parts with this designation
are in wide distribution.

Alemite®
Alemite® is a registered trademark of
Alemite, LLC, Johnson City, TN, USA.

Lincoln Industrial®
Lincoln Industrial® is a registered trademark of
Lincoln Industrial (USA) Corp.

John Deere®
John Deere® is a registered trademark of
Deere and Company, Moline, Illinois.

All manufacturer names and numbers are for cross reference identification purposes only. In no way are we implying that our parts were made by the manufacturers listed. Prices, materials, dimensions, tolerances, designs and grades subject to change without notice. © G.L. Huyett 2011