

M6 - POPULAR

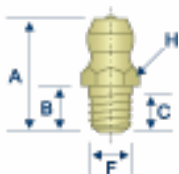
EXCEEDS 12 HR SALT SPRAY.
8,000 PSI MAX PRESSURE.

DIN 71412

6.0 mm threads are comparable in size to 1/4"-28 and are used in many of the same applications. The extended shank on the H213014 allows for access to hard-to-reach greasing points. Our in-house machine shop can custom make your grease fitting, no matter the size, material or plating.

H2106

Straight
M6 x 1.0 Taper Thread
Standard Shank

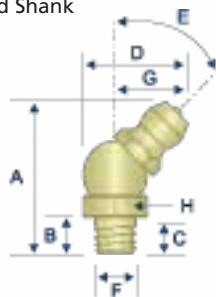


2106
5175
58M5513

AVAILABLE IN STAINLESS

H2107

45° Angle
M6 x 1.0 Taper Thread
Standard Shank

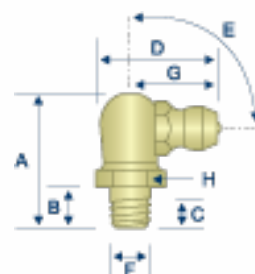


2107
5176
58M5632

AVAILABLE IN STAINLESS

H2108

90° Angle
M6 x 1.0 Taper Thread
Standard Shank

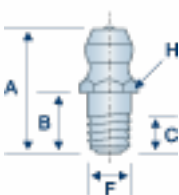


2108
5177
58M1014

AVAILABLE IN STAINLESS

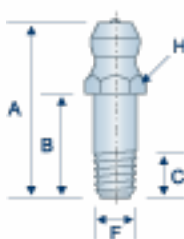
H211652

Straight
M6 x 1.0 Taper Thread
Long Shank



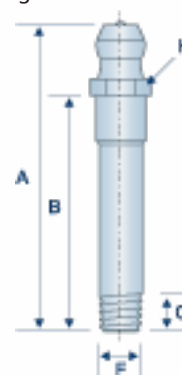
H211680

Straight
M6 x 1.0 Taper Thread
Extra Long Shank



H213014

Straight
M6 x 1.0 Taper Thread
Ultra Long Shank



ITEM #	THREAD	ANGLE (E)	OVERALL LENGTH (A)	SHANK LENGTH (B)	MIN. THREAD LENGTH (C)	OVERALL WIDTH (D)	THREAD DIAMETER (F)	SWING CLEARANCE (G)	HEX (H)
H2106 *	M6 x 1.0	STRAIGHT	16.0 MM	5.5 MM	3.7 MM	□	6.0 MM	□	7.0 MM
H2107 *	M6 x 1.0	45°	21.0 MM	5.5 MM	3.7 MM	14.0 MM	6.0 MM	10.0 MM	9.0 MM
H2108 *	M6 x 1.0	90°	18.0 MM	5.5 MM	3.7 MM	16.0 MM	6.0 MM	12.0 MM	9.0 MM
H211652	M6 x 1.0	STRAIGHT	17.3 MM	8.5 MM	5.0 MM	□	6.0 MM	□	7.0 MM
H211680	M6 x 1.0	STRAIGHT	24.0 MM	14.0 MM	6.0 MM	□	6.0 MM	□	7.0 MM
H213014	M6 x 1.0	STRAIGHT	41.0 MM	31.0 MM	5.0 MM	□	6.0 MM	□	7.0 MM

Common Parts
Parts with this designation are in wide distribution.

Alemite®
Alemite® is a registered trademark of Alemite, LLC, Johnson City, TN, USA.

Lincoln Industrial®
Lincoln Industrial® is a registered trademark of Lincoln Industrial (USA) Corp.

John Deere®
John Deere® is a registered trademark of Deere and Company, Moline, Illinois.

All manufacturer names and numbers are for cross reference identification purposes only. In no way are we implying that our parts were made by the manufacturers listed. Prices, materials, dimensions, tolerances, designs and grades subject to change without notice. © G.L. Huyett 2011

TECHNICAL DRAWINGS ARE APPROXIMATE ACTUAL SIZE

REVISED 06-11