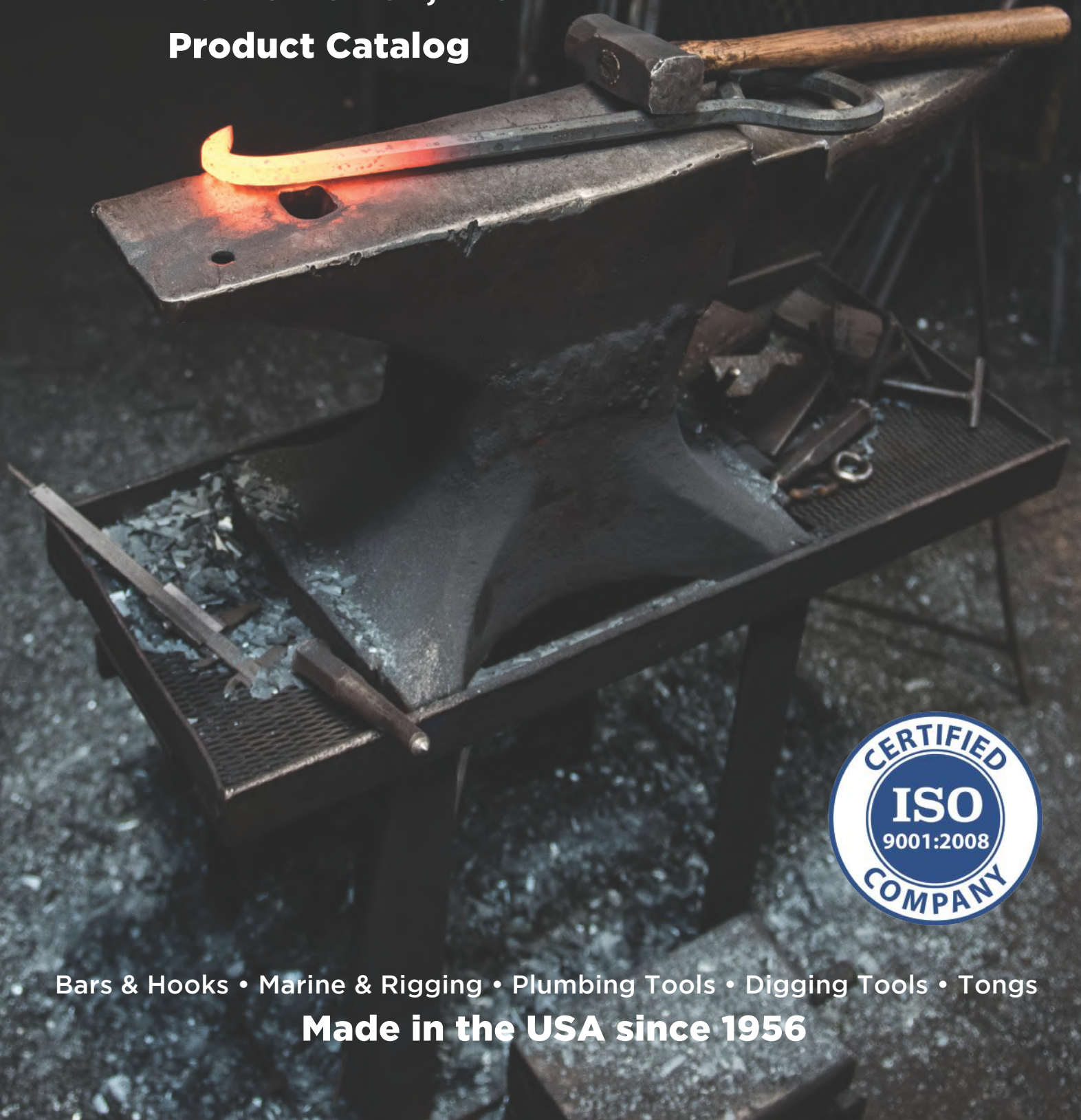




LANSING FORGE, INC.

Product Catalog



• Bars & Hooks • Marine & Rigging • Plumbing Tools • Digging Tools • Tongs

Made in the USA since 1956



About Our Company

The Industrial Blacksmithing Co., got its start in 1956 as a supplier of hand-crafted tongs to forging plants across the United States. In 1978 the company was purchased by Dennis Mosholder, who already had nearly 20 years experience in the hand tool industry as Vice President of the Warren Tool Co. He applied his knowledge of the markets and processes and Industrial Blacksmithing began to grow.

By 1990 the company had reached well beyond it's forging tong core and the Industrial Blacksmithing name no longer seemed to fit. The company was re-named Lansing Forge, Inc. and soon the LFI moniker became recognized within the railroad forging and industrial supply world. Over the next 20 years LFI expanded its presence in these industries while seek opportunities in new areas. Every step of the way LFI was building a reputation for making quality tools produced only in the U.S.A.

Today Dennis is retired but the company remains family-owned and continues to thrive and grow. The Forging Tong business that started it all is still right at the core but it is far from alone. In addition to the industries mentioned earlier we now serve many more such as the U.S. Military, Marine, Construction, Plumbing, Mining, Oil & Gas, Agriculture & Automotive to name a few. Please take a look at our catalog and keep in mind that we are not limited to what is inside as we make many specials and custom items as well. Also, remember that all items are produced in the USA. If given the opportunity to satisfy your needs we are confident that LFI will not disappoint.



Terms & Information

Pricing

Please refer to our most recent Lansing Forge Price List. You may also call us at (517) 882-2056 or email to sales@lansingforge.com to request it.

We do offer volume discounts on many of our products and are happy to quote prices with shipping included. To learn more about volume discounts or to get a quote with shipping included please contact us at (517) 882-2056 or sales@lansingforge.com.

Shipping Options

Shipments *under* 150 lbs. (Parcel Service)

Prepay & Add: Shipping is prepaid by us and added to your invoice.

Customer Account: We can ship your order and bill your existing UPS account.

Included in Price: We quote you a price that includes shipping. Please contact us for a free quote.

Shipments *over* 150 lbs. (Carrier Service)

Prepay & Add: We will set up the carrier and add the cost of shipping to your invoice.

Customer Account: You choose your own carrier and pay for it “collect” when it arrives.

Included in Price: We quote you a price that includes shipping. Please contact us for a free quote.

New Customers

New customers must provide basic information at the time of their first order. This includes*:

- Bill and Ship To Name and Addresses
- Contact Name, Phone Number, and Email Address
- Credit References
- Product Part Numbers, Prices, and Descriptions
- Shipping Method

**New customers may be required to fill out a credit application to receive Net 30 payment terms. Please contact us for details.*



Table of Contents

Bars & Hooks Page 5

Wrecking Bars, Pry Bars, Crowbars, Pinch Bars, Jimmy Bars, Die Setters Bars, Carpenter Bars, Slate Bars, Digging Bars, Manhole Cover Hooks, Chain Hooks

Scrapers Page 10

Ship Scrapers, Hand Scrapers

Marline Spikes Page 11

Wire Rope Spikes, Manila Rope Spikes

Caulking Irons Page 12

Offset Irons, Long & Short Nose Irons, Stub Nose Irons, Ceiling Irons, Yarning Irons, Straight Irons

Digging & Tamping Page 15

Picks, Mattocks, Digging Bars, Post Hole Diggers, Tampers

Hammers & Handles Page 16

Sledge Hammers, Scaling Hammers, Hickory Handles

Punches & Chisels Page 17

Back Out Punches, Cold Cutting Chisels

Wedges Page 18

Joint Breaking "Fox" Wedges, Log Splitting Wedges

Tire Tools Page 19

Lug Wrench, Lug Wrench Sets, Replacement Breaker Bar and Handle, Tire Spoon, Bead Breaker

Tongs & Keys Page 21

Style A-H, Steel Press Loading, Key Drift, Single Pickup, Double Pickup, Straight Lip, Flat Jaw Gad, Rivet & Bolt Tongs, Hammer Keys

Bars & Hooks



Carpenter Bar

Part #	Stock Size	Length	Weight/Lbs
198	3/4"	24"	3.5
198B	3/4"	30"	4.5

High Carbon Hex Steel • Double Claw Ends



Die Setters Bar

Part #	Stock Size	Length	Weight/Lbs
502	5/16"	7"	0.5
503	7/16"	12"	1
504	5/8"	18"	1.75
505	3/4"	30"	4

High Carbon Hex Steel



Stripping Bar (Claw & Chisel)

Part #	Stock Size	Length	Weight/Lbs
203	7/8"	42"	8.5
204B	7/8"	48"	9.5
205B	1"	48"	12.5
205C	1"	60"	15.5

High Carbon Hex Steel • Claw & Chisel Ends



Stripping Bar (Double Chisel)

Part #	Stock Size	Length	Weight/Lbs
204	7/8"	48"	9.5
205	1"	48"	12.5
206	1"	72"	18
207	1"	96"	24.8

High Carbon Hex Steel • Double Chisel End

Bars & Hooks



Wedge Point Crowbar

Part #	Stock Size	Length	Weight/Lbs
346-06	1-1/8"	36"	6
346-10	1-1/8"	48"	10
346-12	1-1/8"	51"	12
346-14	1-1/8"	54"	14
346-18	1-1/4"	60"	18
346-22	1-3/8"	64"	22
346-26	1-1/2"	66"	26

High Carbon Steel



Pinch Point Crowbar

Part #	Stock Size	Length	Weight/Lbs
215-06	1-1/8"	36"	6
215-10	1-1/8"	48"	10
215-12	1-1/8"	51"	12
215-14	1-1/8"	54"	14
215-18	1-1/4"	60"	18
215-22	1-3/8"	64"	22
215-26	1-1/2"	66"	26

High Carbon Steel



Diamond Point Crowbar

Part #	Stock Size	Length	Weight/Lbs
501-18	1-1/4"	60"	18
501-22	1-3/8"	64"	22
501-26	1-1/2"	66"	26

High Carbon Steel

Bars & Hooks



Warehouse Loading Bar

Part #	Stock Size	Length	Weight/Lbs
213	1-1/8"	54"	14
213S	1-1/8"	51"	12
214	1-1/4"	60"	18

High Carbon Steel



Slate Bar

Part #	Stock Size	Length	Weight/Lbs
208	1"	36"	8
209	1"	48"	11
210	1"	54"	12
211	1"	60"	14

Available with Offset or Straight Chisel & Diamond Point • High Carbon Hex Steel



Favorite Pattern Wrecking

Part #	Stock Size	Length	Weight/Lbs
299A	3/4"	24"	3.5
299B	3/4"	30"	4.5
299C	3/4"	36"	5.25

High Carbon Hex Steel



Please refer to our most recent Lansing Forge Price List or call (517) 882-2056 or email us at sales@lansingforge.com to request a copy.

Bars & Hooks



Gooseneck Wrecking Bar

Part #	Stock Size	Length	Weight/Lbs
200E	3/4"	30"	4
200F	3/4"	36"	4.75
200G	7/8"	36"	7.5
200H	1"	36"	9.5
200I	7/8"	42"	8
200J	1"	48"	12.5
200K	1"	60"	15.5

High Carbon Hex Steel



Telegraph Digging Bar

Part #	Stock Size	Length	Weight/Lbs
216	1-1/8"	96"	28
217	1"	72"	17
217S	1-1/8"	72"	21

High Carbon Hex Steel • One Chisel End & One Pencil Point End



Chisel Point Bar

Part #	Stock Size	Length	Weight/Lbs
371-050012	1/2"	12"	0.75
371-062512	5/8"	12"	1.25
371-065218	5/8"	18"	1.75
371-075012	3/4"	12"	1.5
371-075018	3/4"	18"	2.5

Heat Treated Alloy Hex Steel • Other Sizes Available Upon Request



Double Chisel End Wrecking

Part #	Stock Size	Length	Weight/Lbs
506	1"	36"	8.25
507	1"	48"	11
508	1"	60"	14.25

One Straight Chisel (1-1/8") & One Offset Chisel (2") • High Carbon Hex Steel

Bars & Hooks



Offset Pinch Bar

Part #	Stock Size	Length	Weight/Lbs
347	3/4"	24"	2.75
347S	3/4"	24"	2.75
348	3/4"	30"	3.75
348S	3/4"	30"	3.75
349	7/8"	30"	5.25
349S	7/8"	30"	5.25
350	7/8"	36"	6.5
350S	7/8"	36"	6.5
351	1"	36"	8
352	1"	48"	11
353	1"	60"	14

High Carbon Hex Steel • "S" Denotes Straight Chisel



Chain Hook with Offset Handle

Part #	Stock Size	Length	Weight/Lbs
382	5/8"	30"	4

High Carbon Hex Steel • Chisel Tip

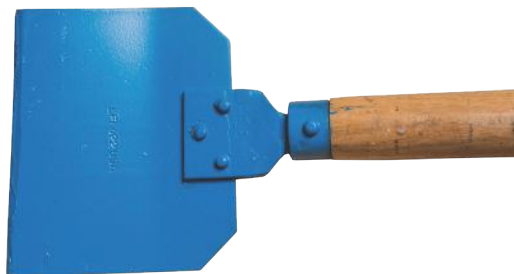


Manhole Hook with Inline Handle

Part #	Stock Size	Length	Weight/Lbs
382B	5/8"	18"	2.75
382C	5/8"	24"	3.2
382D	5/8"	36"	4.5
382E*	5/8"	24"	3.5
382F*	5/8"	36"	4.5

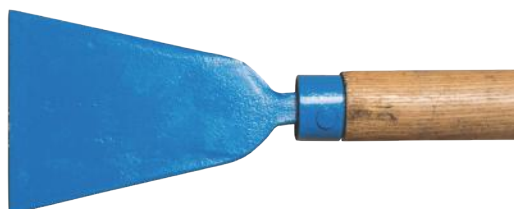
High Carbon Hex Steel • Wedge Tip

Heavy Duty Scrapers



Ship Scraper

Part #	Blade Width	Length	Weight/Lbs
422	6"	54-1/2"	3.5



Heavy Blade Ship Scraper

Part #	Blade Width	Length	Weight/Lbs
428	4-1/4"	58"	4



Double End Scraper

Part #	Stock Size	Length	Weight/Lbs
392	1/4" x 1-1/4"	10.5"	1
393	1/4" x 1"	15"	1

High Carbon Steel • Heat Treated

ALL PRODUCTS MADE IN
THE U.S.A.

Marline Spikes



Wire Rope Marline Spike

Part #	Length	Head	Hole	Weight/Lbs
304-08	8"	5/8" x 1-1/2"	5/16"	1
304-10	10"	5/8" x 1-1/2"	5/16"	1.25
304-12	12"	5/8" x 1-1/2"	5/16"	1.5
304-14	14"	5/8" x 1-1/2"	5/16"	1.625
304-16	16"	5/8" x 1-1/2"	5/16"	1.75
304-18	18"	5/8" x 1-1/2"	5/16"	1.875
304-20	20"	5/8" x 1-1/2"	5/16"	2

Heat Treated & Polished High Carbon Steel • For Wire Rope • With Hole



Manila Rope Marline Spike

Part #	Length	Stock Size	Weight/Lbs
305-06	6"	1/2"	0.25
305-08	8"	5/8"	0.5
305-10	10"	5/8"	0.625
305-12	12"	3/4"	0.75
305-14	14"	3/4"	0.875
305-16	16"	1"	1.75
305-18	18"	1"	1.875
305-20	20"	1"	2

Heat Treated & Polished High Carbon Steel • For Rope • With Hole



Wire Rope Marline Spike

Part #	Length	Head	Weight/Lbs
306-06	6"	3/8" x 1"	0.75
306-08	8"	3/8" x 1"	1
306-10	10"	3/8" x 1-3/8"	1.25
306-12	12"	3/8" x 1-3/8"	1.5
306-14	14"	3/8" x 1-3/8"	1.625
306-16	16"	5/8" x 1-1/2"	1.75
306-18	18"	5/8" x 1-1/2"	1.875
306-20	20"	5/8" x 1-1/2"	2

No Hole • Heat Treated & Polished High Carbon Steel • For Wire Rope

Caulking Irons



Inside Iron

Straight Iron

Part #	Size	Weight/Lbs
036*	5/8" x 7" x 1/8"	0.66
037*	5/8" x 7" x 1/8"	0.66

*INSIDE

*OUTSIDE



Inside Iron

Offset Iron

Part #	Size	Weight/Lbs
038*	5/8" x 6-1/2" x 1/8"	0.58
039*	5/8" x 6-1/2" x 1/8"	0.58

*INSIDE

*OUTSIDE



Left/Right Iron

Offset Irons

Part #	Size	Weight/Lbs
010*	5/8" x 10" x 3/16"	0.75
011*	5/8" x 10" x 3/16"	0.75

*LEFT

*RIGHT



Inside Iron

Curved Offset Irons

Part #	Size	Weight/Lbs
040*	5/8" x 7" x 1/8"	0.58
041*	5/8" x 7" x 1/8"	0.58

*INSIDE

*OUTSIDE

Caulking Irons



Outside Iron

Stub Irons

Part #	Size	Weight/Lbs
014*	5/8" x 4-1/2" x 1/8"	0.42
015*	5/8" x 4-1/2" x 1/8"	0.42
*INSIDE		
*OUTSIDE		



Long Curved Offset Irons

Part #	Size	Weight/Lbs
065	5/8" x 7-1/2" x 1/8"	0.66
067	3/4" x 8" x 1/8"	0.9

Square End



Curved Nose Packing Iron

Part #	Size	Weight/Lbs
028	5/8" x 8-1/2" x 1-7/16"	0.75
086	3/4" x 9-1/2" x 1-1/2"	1.2

Square End



Long Nose Iron

Part #	Size	Weight/Lbs
012	5/8" x 8" x 1/8"	0.66
013	5/8" x 6-1/2" x 1/8"	0.58

Square End

Caulking Irons



Ceiling Iron

Part #	Size	Weight/Lbs
022		



Spring Yarning Iron

Part #	Size	Weight/Lbs
026	5/8" x 10" x 1/8"	0.66



Offset Yarning Iron

Part #	Size	Weight/Lbs
027	5/8" x 12" x 1/8"	0.66



Digging & Tamping



Clay Picks

Part #	Chisel Width	Length	Weight/Lbs
165	1-1/4"	25"	7
167	N/A	25"	7

#165 has Chisel & Point • #167 has Double Square Point • #6 Eye



Contractor's Pick

Part #	Chisel Width	Length	Weight/Lbs
173	N/A	30"	8

Double Round Points • High Carbon Steel • #6 Eye



Pick Mattock

Part #	Blade Width	Length	Weight/Lbs
171	3-1/2" x 8"	18-1/2"	5

High Carbon Steel • #6 Eye • 7-1/2" Pick Length

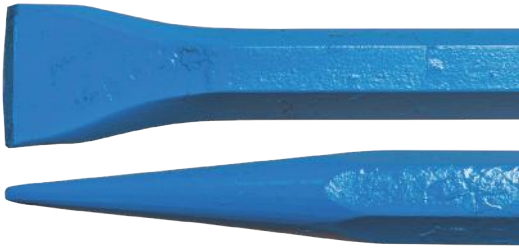


Cutter Mattock

Part #	Blade Width	Length	Weight/Lbs
169	3-1/2" x 8"	15-3/4"	5

High Carbon Steel • #6 Eye • 3" x 4-3/4" Cutter Blade

Digging & Tamping



Telegraph Digging Bar

Part #	Stock Size	Length	Weight/Lbs
216	1-1/8"	96"	28
217	1"	72"	17
217S	1-1/8"	72"	21

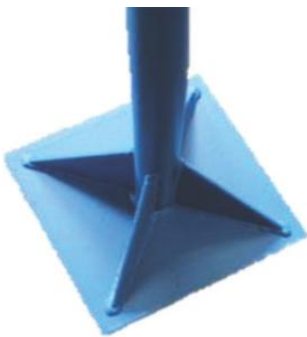
High Carbon Hex Steel • One Chisel End & One Pencil Point End



Tamper Top Post Hole Digger

Part #	Stock Size	Length	Weight/Lbs
197	1"	70-1/2"	15

Standard Blade Size: 2-1/2" x 8-1/2" • Standard Head Size: 2-1/4"
Available in Any Length



Tamper with Steel Handle

Part #	Base	Height	Weight/Lbs
195	8" x 8"	44"	15
196	10" x 10"	44"	20

Hammers & Handles



Scaling Hammer

Part #	Head Length	Bit Size	Weight/Lbs
380S	13"	5-1/2"	1.5

Heat Treated High Carbon Steel

Hammers & Handles



Double-Faced Sledgehammer

Part #	Face Size	Handle	Weight/Lbs
496H-02	1-1/2"	16"	2
496H-03	1-7/8"	16"	3
496H-04	1-3/4"	16"	4
496H-06	2-1/8"	36"	6
496H-08	2-1/4"	36"	8
496H-10	2-1/2"	36"	10
496H-12	2-5/8"	36"	12

Heat Treated High Carbon Steel



Hickory Handles

Part #	Eye	Length	Weight/Lbs
9002	5/8" x 7/8"	13"	0.5
9003	3/4" x 1"	16"	0.8
9005	1" x 1-3/8"	36"	1
9006	#6	36"	1.3

Each Handle Comes with Handle Wedges

Punches & Chisels



Back Out Punches

Part #	Punch Size	Handle	Weight/Lbs
500-0375	3/8"	16"	2
500-0500	1/2"	16"	2.33
500-0625	5/8"	16"	2.5
500-0750	3/4"	16"	3
500-0875	7/8"	16"	3.5
500-1000	1"	16"	4

Heat Treated High Carbon Steel

Please refer to our most recent Lansing Forge Price List or call (517) 882-2056 or email us at sales@lansingforge.com to request a copy.

Punches & Chisels



Cold Cutting Chisel

Part #	Head Length	Bit Size	Weight/Lbs
226H-02	6"	1-3/8"	0.75
226H-03	7"	1-1/2"	1.25
226H-04	8"	1-3/4"	1.75

Heat Treated Alloy Steel

Wedges



Joint Breaking "Fox" Wedges

Part #	Head Size	Length	Weight/Lbs
359-02	2 3/16" x 1"	2"	0.06
359-03	1/4" x 1"	3"	0.12
359-04	3/8" x 1"	4"	0.25
359-05	7/16" x 1-1/4"	5"	0.375
359-06	1/2" x 1-1/4"	6"	0.75
359-08	3/4" x 1-1/2"	8"	1.25
359-10	2" x 2"	10"	6



Log Splitting Wedge

Part #	Head Size	Length	Weight/Lbs
490-03	1-1/4"	7-1/2"	3
490-04	1-3/8"	8-1/2"	4
490-05	1-1/2"	9"	5
490-06	1-5/8"	10"	6
490-08	2"	11"	8

Tire Tools



Lug Wrench Set (Double Drive)

Part #	Socket Size(s)	Length	Weight/Lbs
B81910	13/16", 1-1/2"	30"	8

13/16" End is Square • 1-1/2" End is Hex • Set Includes #B81909 Breaker Bar
Breaker Bar Only (Included with Set Above)

Part #	Description	Length	Weight/Lbs
B81909	3/4" Breaker Bar	30"	4



Lug Wrench Set (Single Drive)

Part #	Socket Size(s)	Length	Weight/Lbs
12506195	1-1/2" (Hex)	19-1/4"	5.25

Set Includes Handle and Breaker Bar



Lug Wrench (Double Drive)

Part #	Socket Size(s)	Length	Weight/Lbs
B81911	31/32", 1-3/4"	29"	7.75

31/32" End is Square • 1-3/4" End is Hex



Tire Spoon

Part #	Length	Weight/Lbs
B8558	18"	2.5



Bead Breaker

Part #	Length	Weight/Lbs
B8924	32"	6

Curb Stop/Main Valve Keys



Curb Stop Key (Slender Head)

Part #	Stock Size	Length	Weight/Lbs
600-48	5/8"	48"	5.5
600-60	5/8"	60"	6.5
600-72	5/8"	72"	7.5
600-96	5/8"	96"	9.5
600-120	5/8"	120"	11.75
600-144	5/8"	144"	13.75

Precision machined, slender head with slightly tapered jaw designed to operated offset valves or valves near to the inside wall of the curb box.



Curb Stop Key (Mud-Cutter Head)

Part #	Stock Size	Length	Weight/Lbs
601-48	5/8"	48"	5.5
601-60	5/8"	60"	6.5
601-72	5/8"	72"	7.5
601-96	5/8"	96"	9.5
601-120	5/8"	120"	11.75
601-144	5/8"	144"	13.75

Precision machined head with 'duck-billed' jaws for easy-on. Interior wedge designed to push dirt and mud away from the top of the valve, potentially allowing for it's operation without costly excavation.



Main Valve Key

Part #	Stock Size	Length	Weight/Lbs
602-48	1.050"	48"	7
602-60	1.050"	60"	8.25
602-72	1.050"	72"	9.25
602-96	1.050"	96"	11.5
602-120	1.050"	120"	14
602-144	1.050"	144"	16

Stress relieved welds. Handle and shaft made from Schedule 80 pipe. Steel head with mud vents.

Fits 2" Main Valves

Forging Tongs



To Hold Round Steel - 4" Grip

Hammerman & Heater

Style A	Handle Length			
Size Range	36"	48"	60"	72"
1/2" to 3/4"	Please refer to our latest price list for current prices. If you do not have one please call (517) 882-2056 or email sales@lansingforge.com to request a copy			
13/16" to 1"				
1-1/16" to 1-1/4"				
1-5/16" to 1-1/2"				
1-9/16" to 1-3/4"				
1-13/16" to 2"				
2-1/16" to 2-1/2"				
2-9/16" to 3"				

Please Specify Exact Jaw Size When Ordering
Sizes Under 1/2" and Over 3" Available



To Hold Square or Round-Cornered Steel Square 4" Grip

Hammerman Tong

Style B	Handle Length	
Size Range	36"	48"
1/2" to 3/4"	Please refer to our latest price list for current prices. If you do not have one please call (517) 882-2056 or email sales@lansingforge.com to request a copy	
13/16" to 1"		
1-1/16" to 1-1/4"		
1-5/16" to 1-1/2"		
1-9/16" to 2"		
2-1/16" to 2-1/2"		

Please Specify Exact Jaw Size When Ordering
Sizes Under 1/2" and Over 2" Available



Pressman Tong

Style C	Max. Billet Weight	Handle Length	
Tong Weight		36"	48"
Light	15 lbs.	Please refer to our latest price list or call/email to request a copy	
Medium	30 lbs.		
Heavy	50 lbs.		
Extra Heavy	80 lbs.		

Please Specify Round or Square Steel & Exact Jaw Size
Please Specify if Flat Jaws Are Desired
Also Available in Extra Light or Super Heavy Weights
Sizes over 6" Priced Per Order

Forging Tongs



To Hold Round, Square or Hex
2" Grip

Tong-Hold Tong

Style D	Max. Billet Weight	Priced per Order
Tong Weight		
Extra Light	5 lbs.	
Light	15 lbs.	
Medium	30 lbs.	
Heavy	50 lbs.	
Extra Heavy	80 lbs.	

Please Specify Jaw Size, Handle Length, Hold Type and Tong Weight when ordering



Trimmer or Flash

Style E	Forge Weight	Handle Length		
Tong Weight		12-24"	36"	48"
Extra Light	5 lbs.	Please refer to our latest price list or call/email to request a copy		
Light	15 lbs.			
Medium	30 lbs.			
Heavy	50 lbs.			
Extra Heavy	80 lbs.			



Hot Inspection Tong

Style F	Handle Length	
Weight	18"	24"
Normal Duty	Please refer to our latest price list or call/email to request a copy	
Heavy Duty		



Spring-Loaded for One-Hand Application

Steel Press Loading Tong

Handle Length
8-1/2"

Forging Tongs



To Hold Square or Flat Steel

Heater Tong

Style G	Handle Length		
Size Range	48"	60"	72"
3/8" to 1"	Please refer to our latest price list for current prices. If you do not have one please call (517) 882-2056 or email sales@lansingforge.com to request a copy		
1-1/16" to 1-1/2"			
1-9/16" to 2"			
2-1/16" to 2-1/2"			
2-9/16" to 3"			
3-1/16" to 3-1/2"			
3-9/16" to 4"			

Please Specify Exact Jaw Size When Ordering



Gooseneck Heater

Style H	Handle Length			
Size Range	36"	48"	60"	72"
3/8" to 1"	Please refer to our latest price list for current prices. If you do not have one please call (517) 882-2056 or email sales@lansingforge.com to request a copy			
1-1/6" to 1-1/2"				
1-9/16" to 2"				
2-1/16" to 2-1/2"				
2-9/16" to 3"				
3-1/6" to 3-1/2"				
3-9/16" to 4"				

Please Specify Exact Jaw Size When Ordering

Still Can't Find What You Need?

Lansing Forge has always been up to the task of satisfying our customers needs for custom tools. Our capabilities include Open Die Forging, Welding, Machining & Heat Treating. This combination of services provides us with the flexibility to make the one-offs or the prototypes that you need. All we need is a drawing, a sample or even just a concept to get started.

517.882.2056 • sales@lansingforge.com

General Use Tongs



Lip Size - 3/8" x 7/8"

Single Pickup Tong

Overall Length

16-24"

25-42"



Lip Size - 5/16 x 5/8"

Double Pickup Tong

Overall Length

16-24"

25-42"



Lip Size - 3/8 x 7/8"

Straight Lip Tong

Overall Length

16-24"

25-42"



Lip Size - 3/8 x 7/8"

Flat Jaw Gad Tong

Overall Length

16-24"

25-42"



Lip Size - 5/16 x 5/8"

Rivet Tong

Overall Length

16-24"

25-42"

General Use Tongs



Holds Rounds From
1/4" to 1-1/2"

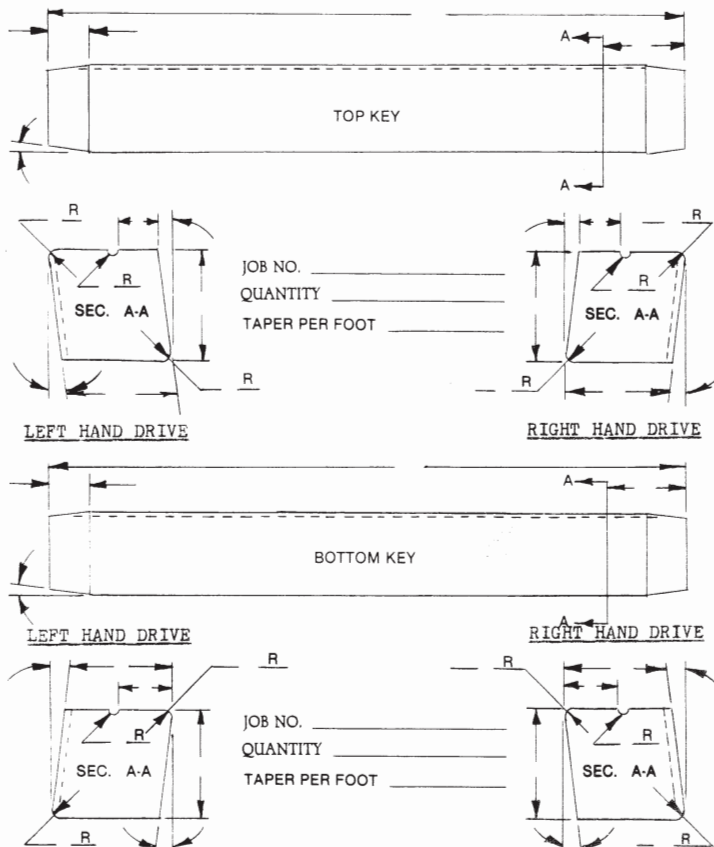
Bolt or Curved Lip Tong

Size	Overall Length
1/4"	18"
3/8"	20"
1/2"	20"
3/4"	22"
1"	24"
1-1/4"	30"
1-1/2"	42"

For Lengths Over 24" to 42" ADD \$6.50

HAMMER KEY

ORDER DATE _____	QUANTITY _____
HEAT TREAT _____	
MATERIAL _____	
DELIVERY _____	



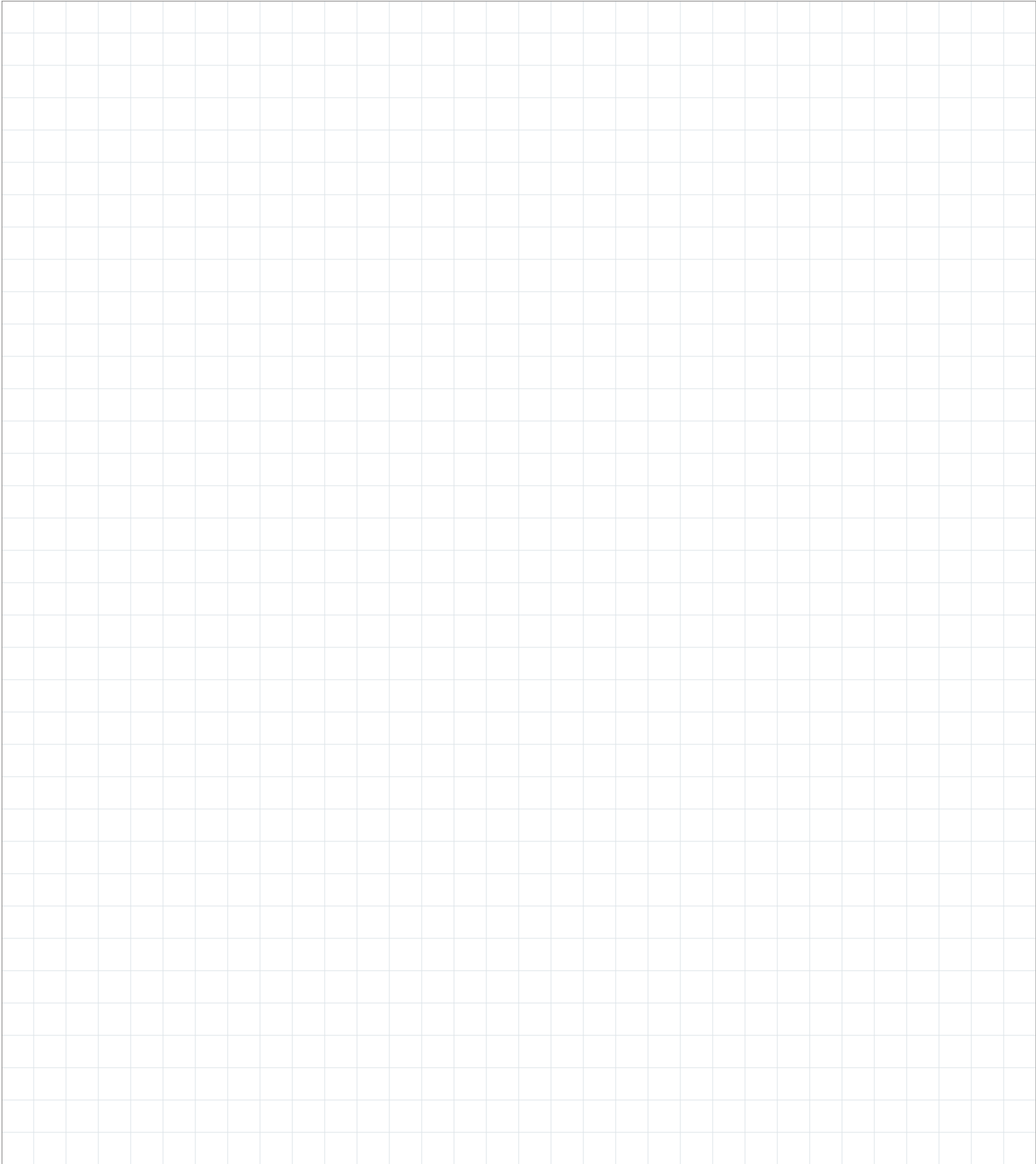
Hammer Keys

Lansing Forge specializes in making Hammer Keys of all sizes. Our standard material is P20 Hi-Hard from Ellwood Specialty.

A simple drawing with exact dimensions is all we need to fulfill quote requests. If you do not have your own drawing you can download and use our template from lansingforge.com

Please contact us with any questions at 517.882.2056 or submit your quote requests to sales@lansingforge.com or by fax at 517.882.4555

Notes & Sketches



Machining & Tube Bending Services Available





LANSING FORGE, INC.

5232 Aurelius Rd, Lansing MI 48911 • sales@lansingforge.com

lansingforge.com