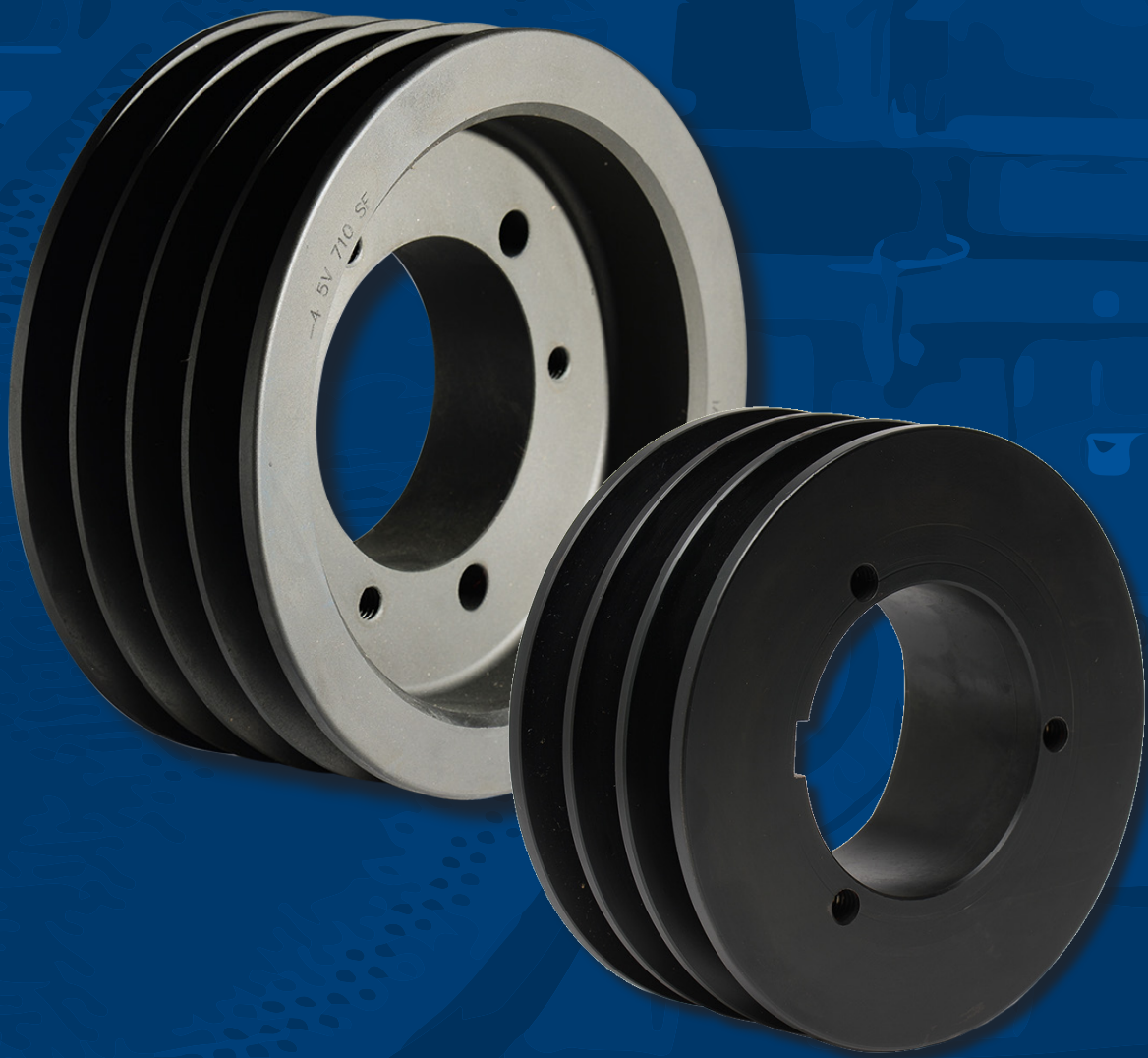


Martin

V-BELT SHEAVES

HI-CAP® WEDGE
CONVENTIONAL
VARIABLE PITCH
FRACTIONAL HORSEPOWER



Martin offers reliable V-belt Sheaves to keep your belt drives running smoothly. *Martin* Sheaves are stocked in a range of Bushing types or groove styles to meet any light or heavy-duty application.

Martin carries the largest inventory of stock Sheaves and can manufacture Made-to-Order Sheaves quickly and efficiently to meet the shortest of turnarounds. When it comes to high-quality Sheaves made from North American steel, *Martin* is the one you rely on.



Harvesting



Pulp & Paper



Aggregates



Food & Beverage



Oil & Gas



Automotive

MTO Capabilities



• Special Materials

- Aluminum
- Brass
- Ductile Iron
- Cast Iron
- Steel
- Stainless Steel

• Poly V Sheaves

• E Section Conventional Sheaves

• Idler Wheels

• Flat Pulleys

• Fly Wheels

• Wire Rope Pulleys

• Crusher Duty

• Deep Groove

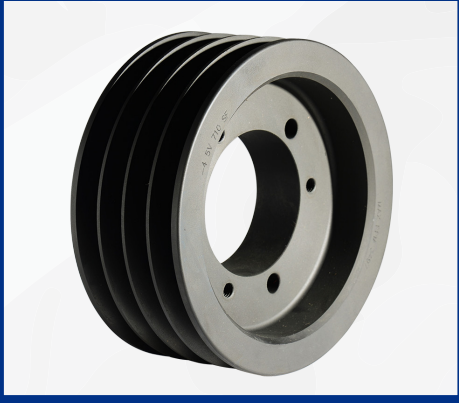
• Finished Bore

• Special Bore or Bushings

• Precision machined grooves

• Static or Dynamic Balancing

QD V-Belt Sheave



- **Hi-Cap® Wedge** – Stocked for 3V, 5V & 8V Belts
- **Conventional** – Stocked for A, B, C & D Belts
- **Available in 1 to 12 groove configurations**
- **Statically balanced** (Dynamic balancing available)
- **Detachable Bushing for easy installation & maintenance**

Taper Bushed V-Belt Sheave



- **Hi-Cap® Wedge** – Stocked for 3V, 5V & 8V Belts
- **Conventional** – Stocked for A, B, C & D Belts
- **Available in 1 to 12 groove configurations**
- **Statically balanced** (Dynamic balancing available)
- **Clean & compact Bushing**

MST® V-Belt Sheave



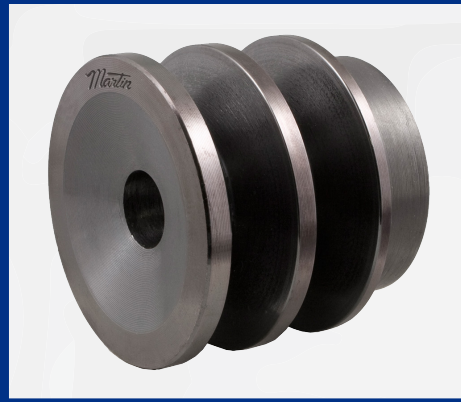
- **Hi-Cap® Wedge** – Stocked for 3V, 5V & 8V Belts
- **Conventional** – Stocked for A, B, C & D Belts
- **Available in 1 to 12 groove configurations**
- **Statically balanced** (Dynamic balancing available)
- **Easy blind installation**

Combination V-Belt Sheave



- **Grooved to run A Section or B Section V-Belts**
- **Available with QD, Taper Bushed, or MST® Bushing**
- **Precision machined grooves**
- **Statically balanced** (Dynamic balancing available)

FHP V-Belt Drive



- **Fractional Horsepower Sheaves for light duty applications**
- **Available in single & double groove designs**
- **Available Bored-to-Size and MST® Bushed**
- **Precision machined grooves**
- **Statically balanced** (Dynamic balancing available)

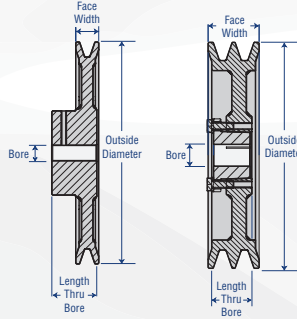
Variable Pitch V-Belt Sheave



- **Stationary adjustable speed Sheaves**
- **Available in single & double groove designs**
- **Full range of popular bore sizes including keyway and setscrew**
- **Positive locking system**
- **Precision machined grooves**
- **Statically balanced** (Dynamic balancing available)

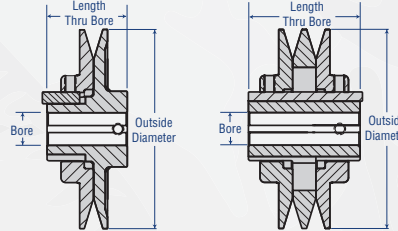
FHP FRACTIONAL HORSEPOWER

of Grooves **2 AK 104 3/4** **Bore or Bushing**
 If not listed, sheave is a single groove
 Bore in Inches
 MST® "H" Bushing
Belt Selection
 AK 3L, 4L, A Section
 BK 4L, 5L, A, B Section
Approximate OD
 1 decimal point: 10.4"



VP VARIABLE PITCH

of Grooves **1 VP 68 1 3/4** **Bore**
 Inches
Variable Pitch
 Belt Selection:
 3L, 4L, 5L, A, B, 5V Section
Approximate OD
 1 decimal point: 6.8"



General Balancing Guidelines

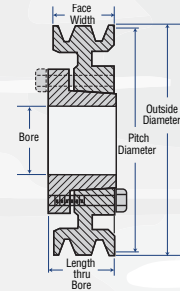
- 5,000 FPM & Less: Cast Iron, Static Balance (*Martin* Stock Sheaves)
- 5,000 FPM to 6,500 FPM: Cast Iron, Dynamic Balance (*Martin* Stock Sheaves)
- 6,501 FPM and Over: Ductile Iron or Steel, Dynamic Balance
- Contact *Martin* for specific application assistance

HIGH CAPACITY SHEAVE

of Grooves **2 3V 220 JA**
Belt Selection
 3V, 5V, 8V
Outside Diameter
 2 decimal points: 2.20"
Bushing

QD CONVENTIONAL SHEAVE

12 D 580 P **Bushing**
Pitch Diameter
 1 decimal point: 58.0"
Belt Selection
 A, B, C, D
of Grooves

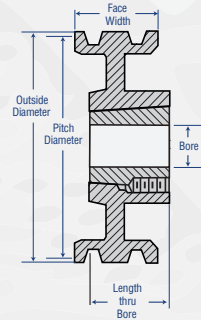


HIGH CAPACITY SHEAVE

of Grooves **10 8V 3000 TB**
Belt Selection
 3V, 5V, 8V
Outside Diameter
 2 decimal points: 30.00"
Bushing

TB CONVENTIONAL SHEAVE

1 B 34 TB **Bushing**
Pitch Diameter
 1 decimal point: 3.4"
Belt Selection
 A, B, C, D
of Grooves

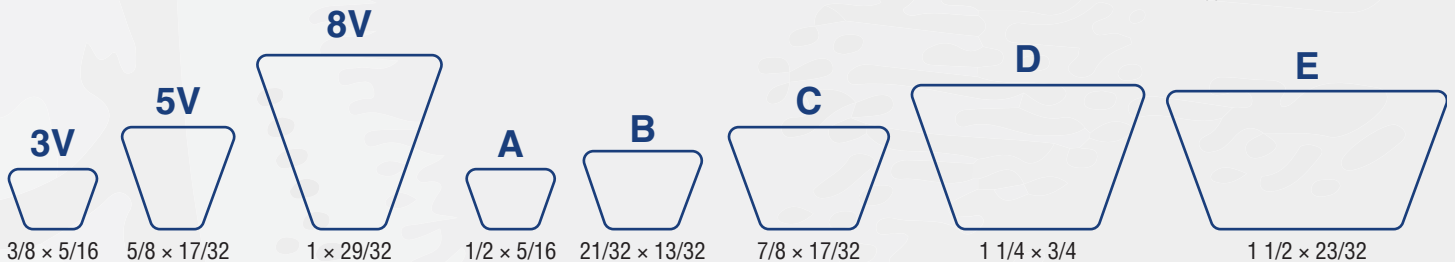
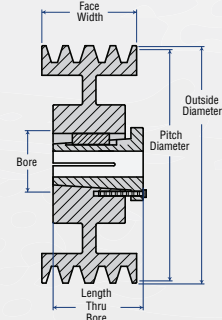


HIGH CAPACITY SHEAVE

of Grooves **1 3V 300 G**
Belt Selection
 3V, 5V, 8V
Outside Diameter
 2 decimal points: 3.00"
Bushing

MST® CONVENTIONAL SHEAVE

10 C 140 R **Bushing**
Pitch Diameter
 1 decimal point: 14.0"
Belt Selection
 A, B, C, D
of Grooves



Martin carries the most complete line of Bushings in the Power Transmission industry. With Bushings stocked in more than 32 North American Branches and quick Made-to-Order turnaround times, *Martin* is the source to rely on for interchangeable Bushings.

• **Always in Stock**

- QD Bushings for conventional or reverse mounting
- Taper Bushed Bushings for flush mounting
- MST® Bushings keyed to the shaft and hub for “blind” installation
- Available from Inventory or Made-to-Order for special applications

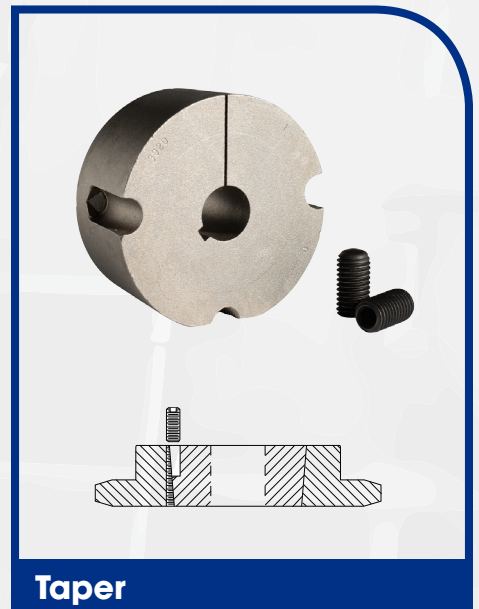
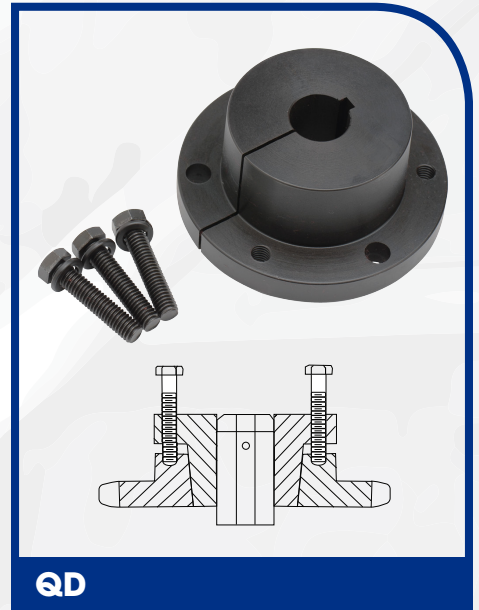
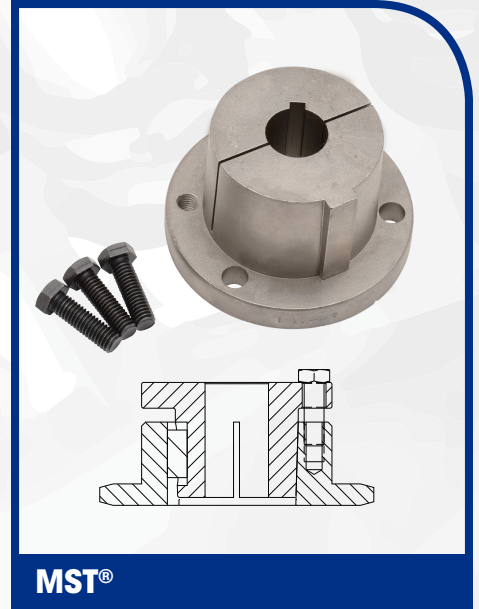
Characteristics	MST® <i>Martin</i> Split Taper	QD Quick Detachable	TB Taper Bushed
Stock Bore Range	3/8" – 7 7/16"	3/8" – 10"	1/2" – 12"
Taper on Barrel*	3/4 in/ft	3/4 in/ft	1.678 in/ft
Material	Iron, Steel	Iron, Steel, Stainless	Iron, Steel, Stainless
Reverse Mount Capability	No	Yes (Thru “J”)	No
Flange	Yes	Yes	No
External Key	Yes	No	No
Split	Double through barrel only	Single through whole Bushing	Single through whole Bushing
Interchangeability of Bushing Styles**	None	None	None

* Definition: Barrel - The portion of the Bushing extending from the flange to the end.

** Note: Bushing styles are not interchangeable (Example: QD must be used with QD products, TB must be used with TB products, etc.), but each type is interchangeable with the same type made by other manufacturers.

Bushing Style	Basic Part Description (followed by bore size.):
MST®	G, H, P1, P2, P3, Q1, Q2, Q3, R1, R2, S1, S2, U0, U1, U2, W1, W2
QD	JA, SH, SDS, SD, SK, SF, E, F, J, M, N, P, W, S
TB	1008, 1108, 1210, 1215, 1310, 1610, 1615, 2012, 2517, 2525, 3020, 3030, 3525, 3535, 4030, 4040, 4535, 4545, 5040, 5050, 6050, 7060, 8065, 10085, 120100.

WARNING: USE OF ANTI-SEIZE LUBRICANT ON TAPERED CONE SURFACES OR ON BOLT THREADS WHEN MOUNTING MAY RESULT IN DAMAGE TO SHEAVES AND SPROCKETS. THIS VOIDS ALL MANUFACTURERS' WARRANTIES.

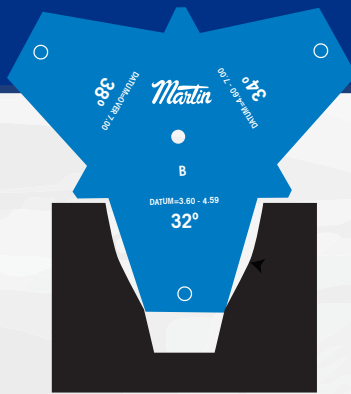


Sheaves should be checked for wear every time you change a belt!

Free Sheave Gauges available at your local *Martin* Branch



Normal Sheave (Uniform Angle)



Worn Sheave (Dished Out)

Indications of Sheave wear include:

- Belts are turning over
- Belts wear out faster than normal
- Belts are "bottoming" out
- Belt dressing is used to quiet drive (not enough tension or worn grooves)
- Belts appear to be "mismatched"

If wear is present, replace them with *Martin* Sheaves.

WARNING

When performing any type of inspection / maintenance, always observe proper safety procedures. ALWAYS LOCK OUT / TAG OUT POWER!

Martin offers:

- Instant availability QD, MST® and Taper Bushed
- The best MTO capability - cast iron, ductile and steel
- Expertise in personnel to assist your efforts
- Complimentary Sheave Gauges available for customer inspection



Free Download
Maintenance and Troubleshooting Guide
www.martinsprocket.com/vbeltguide



For more information contact a branch near you:

USA

Corporate Offices Sales & Manufacturing

ARLINGTON, TX
817-258-3000 (FAX 817-258-3333)

Regional Manufacturing Plants

ALBEMARLE, NC
704-982-9555 (FAX 704-982-9599)

ATLANTA, GA
404-292-8744 (FAX 404-292-7771)

BURLESON, TX
817-295-7151 (FAX 817-447-3840)

DANIELSVILLE, PA
610-837-1841 (FAX 610-837-7337)

FT. WORTH, TX
817-258-3000 (FAX 817-258-3173)

MONTPELIER, OH
419-485-5515 (FAX 419-485-3565)

SACRAMENTO, CA
916-441-7172 (FAX 916-441-4600)

Branch Manufacturing Plants

BOSTON, MA
508-634-3990 (FAX 508-634-3998)

CHARLOTTE, NC
704-394-9111 (FAX 704-394-9122)

CHICAGO, IL
847-298-8844 (FAX 847-298-2967)

DENVER, CO
303-371-8466 (FAX 303-371-7116)

HOUSTON, TX
713-849-4330 (FAX 713-849-4807)

KANSAS CITY, MO
816-231-5575 (FAX 816-231-1959)

LOS ANGELES, CA
323-728-8117 (FAX 323-722-7526)

MINNEAPOLIS, MN
952-829-0623 (FAX 952-944-9385)

NASHVILLE, TN
615-871-4730 (FAX 615-871-4125)

PITTSBURGH, PA
724-452-4555 (FAX 724-452-5794)

PORTLAND, OR
503-223-7261 (FAX 503-221-0203)

TAMPA, FL
813-623-1705 (FAX 813-626-8953)

Manufacturing Only

Abilene, TX
Clarksville, TX
Dallas, TX
Mansfield, TX
Paragould, AR

CANADA

CAMBRIDGE, ONTARIO
519-621-0546 (FAX 519-621-4413)

EDMONTON, ALBERTA
780-450-0888 (Fax 780-465-0079)

MISSISSAUGA, ONTARIO
905-670-1991 (FAX 905-670-2110)

MEXICO

GUADALAJARA, JAL
+52 33-3283-1188
(FAX +52 33-3271-8450)

MONTERREY, N.L.
+52 811 156 6830
(FAX +52 81-1156-6833)

TOLUCA, MEX
+52 722 276 0800
(FAX +52 722-276-0801)

BRAZIL

SÃO PAULO, SP
+55 19 3877 9400
(FAX +55 19-3877-9429)

