



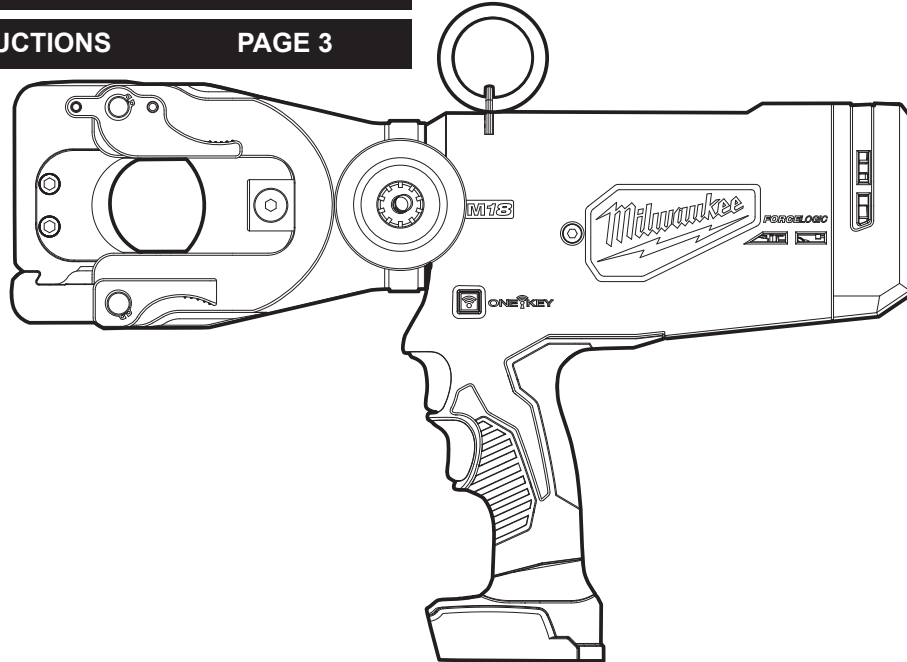
SERVICE PARTS LIST

BULLETIN NO.
54-00-2777

SPECIFY CATALOG NO. AND SERIAL NO. WHEN ORDERING PARTS		REVISED BULLETIN	DATE
M18™ FORCELOGIC™ 1590 ACSR Cable Cutter			June 2019
CATALOG NO.	2777-20	SERIAL NUMBER	H51A
WIRING INSTRUCTION			

CUTTER HEAD SERVICE PARTS	PAGE 2
ACCESSORIES	PAGE 2
LUBRICATION INSTRUCTIONS	PAGE 3

TORQUE SPECIFICATIONS	PAGE 4
-----------------------	--------



Due to the combination of hydraulics and electronics in this tool, service can only be performed at Milwaukee Authorized Hydraulic Repair Centers:

MILWAUKEE ELECTRIC TOOL Central Repair
1401 Sycamore Avenue • Greenwood, MS 38930-7277
 Please send your tool directly to this location for service.

Or

Via e-Service at: www.milwaukeetool.com/e-service
 questions, please call 1.800.SAWDUST (1.800.729.3878)

Or

Visit www.milwaukeetool.com to find your closest Milwaukee authorized Hydraulic repair center

Or

Return it to a MILWAUKEE *factory* Service Center location, freight prepaid and insured.
 A copy of the proof of purchase should be included with the return product.

If you have questions please contact Milwaukee Product Service at:

Product Technical Support via phone at: 262.783.8642

Or

Via email at: METProductSupport@milwaukeetool.com

Disassembly is not recommended and could void the warranty.

SERVICE PARTS EXPLODED VIEW

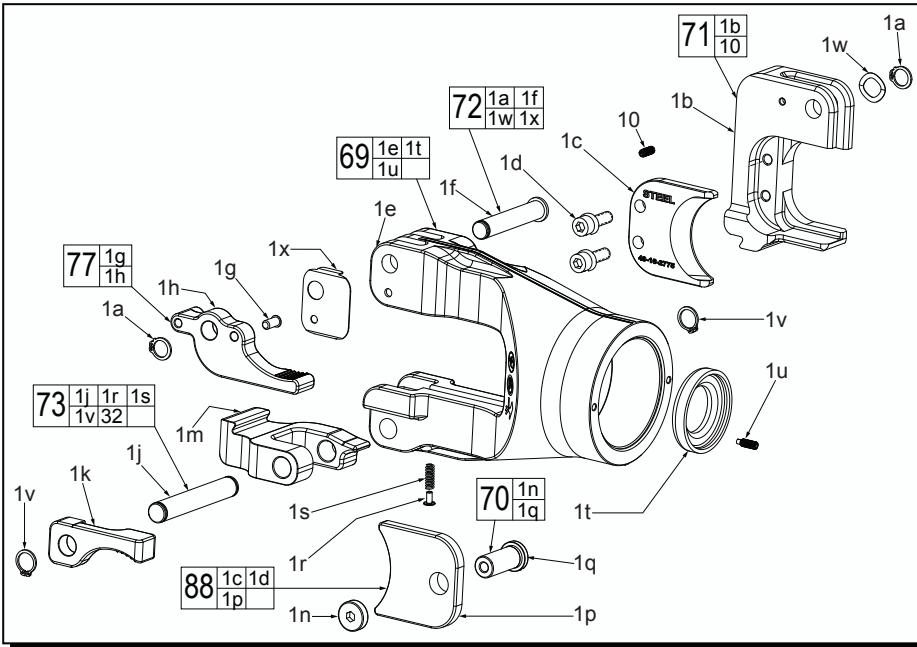


FIG.	PART NO.	DESCRIPTION OF PART	NO. REQ.	FIG.	PART NO.	DESCRIPTION OF PART	NO. REQ.
1	-----	Overhead Cutter Head Assembly	(1)	1r	-----	Head Pin	(1)
1a	-----	Retaining Ring	(2)	1s	-----	Spring	(1)
1b	-----	Blade Holder	(1)	1t	-----	Stop Ring	(1)
1c	-----	Blade	(1)	1u	-----	M4 x 10mm Set Screw	(1)
1d	-----	M6 x 20mm Hex Drive Scr. w/ Washer	(2)	1v	-----	Retaining Ring	(2)
1e	-----	Cutter Head Body	(1)	1w	-----	Wave Spring	(1)
1f	-----	10mm Pin - Short	(1)	10	-----	M4 x 10mm Set Screw	(1)
1g	-----	Ball Spring Plunger	(1)	69	28-25-0040	Clevis and Stop Set Screw Assembly	(1)
1h	-----	Trip Lever	(1)	70	44-60-0411	Blade Pin and Thumb Screw Kit	(1)
1j	-----	10mm Pin - Long	(1)	71	43-72-0314	Fixed Blade Holder and Set Screw Kit	(1)
1k	44-10-0590	Release Lever	(1)	72	44-10-0495	Short Pin Kit	(1)
1m	44-20-0555	Latch Clip	(1)	73	44-10-0505	Long Pin Kit	(1)
1n	-----	Thumb Screw	(1)	77	44-10-0585	Trip Lever Assembly	(1)
1p	-----	Moveable Blade	(1)	88	49-16-2775	Replacement OH Cutter Blade Set	(1)
1q	-----	Pin Blade Connector	(1)				

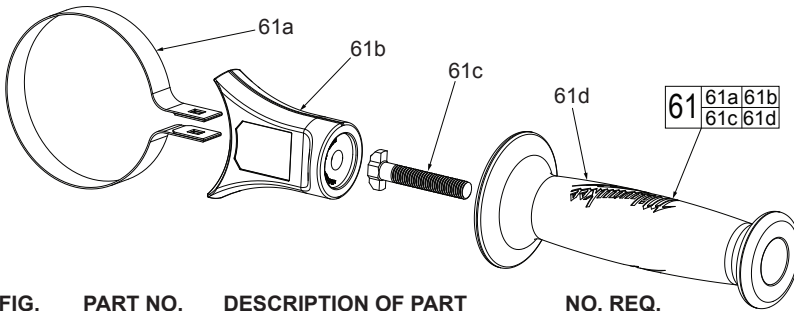



FIG.	PART NO.	DESCRIPTION OF PART	NO. REQ.
61	14-34-0270	Side Handle Assembly	(1)
61a	-----	Clamping Ring	(1)
61b	-----	Handle Housing with Warning Label	(1)
61c	-----	T-Bolt	(1)
61d	-----	Side Handle	(1)

ACCESSORIES

FIG.	PART NO.	DESCRIPTION OF PART	NO. REQ.
	48-22-8279	Overhead Cutter & Crimper Bag, Not Shown (Accessory)	(1)
	49-96-0012	5mm Hex Wrench (Not Shown)	(1)
	42-70-0027	Carabiner (Not Shown)	(1)
	12-20-0089	Service Nameplate (Not Shown)	(1)

LUBRICATION INSTRUCTIONS

 S2 Grease, No. 49-08-5267

 243 Blue Loctite® Thread Sealant, 44-22-0095



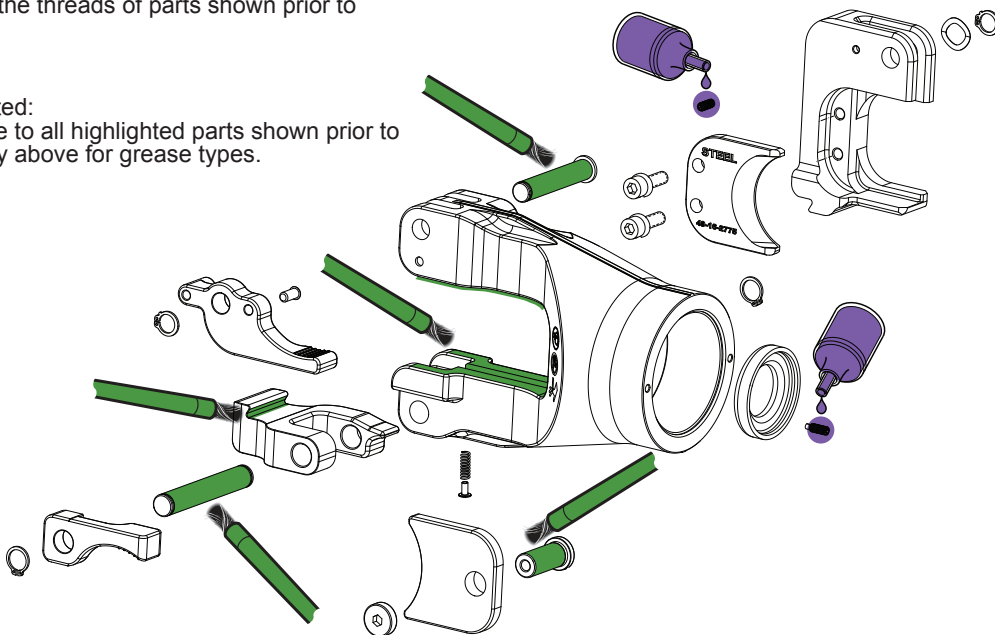
NOTE

Regarding parts to receive thread locking sealant:
Place one to two drops of the recommended Loctite® thread locking sealant (or the equivalent) to the threads of parts shown prior to installation.

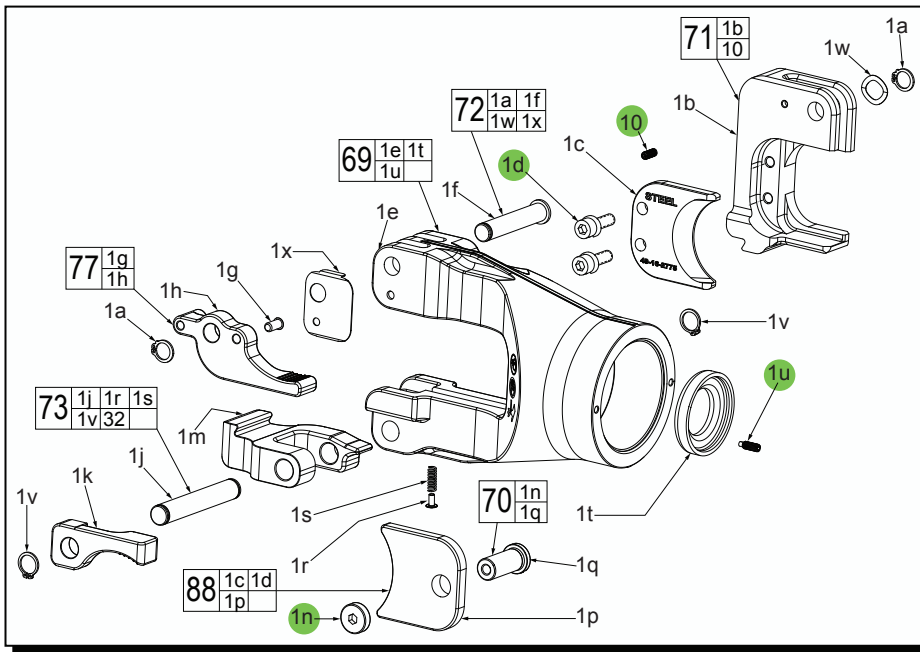


NOTE

Regarding parts to be lubricated:
Apply a light coating of grease to all highlighted parts shown prior to installation. Reference the key above for grease types.



TORQUE SPECIFICATIONS



Cutter Head Assembly

Torque Specifications *Red denotes Critical Torque

Fig.	Part No.	Part or Where Used	KG/CM	IN/LBS
1d		M6 x 20mm Hex Drive Screw w/Washer (Blade)	150	130
1n		Thumb Screw (Moveable Blade)	15	13
1u		M4 x 10mm Set Screw (Cutter Head Body)	10	8
10		M4 x 10mm Set Screw (Blade Holder)	15	13