



SERVICE PARTS LIST

BULLETIN NO.
54-49-3165

SPECIFY CATALOG NO. AND SERIAL NO. WHEN ORDERING PARTS		REVISED BULLETIN	DATE
HARDLINE™ POCKET KNIVES			May 2016
CATALOG NO.	48-22-1994	HARDLINE™ 3" Smooth Blade Pocket Knife	
	48-22-1998	HARDLINE™ 3" Serrated Blade Pocket Knife	
	48-22-1999	HARDLINE™ 3-1/2" Serrated Blade Pocket Knife	

EXAMPLE:
Component Parts (Small #) Are Included
When Ordering The Assembly (Large #).

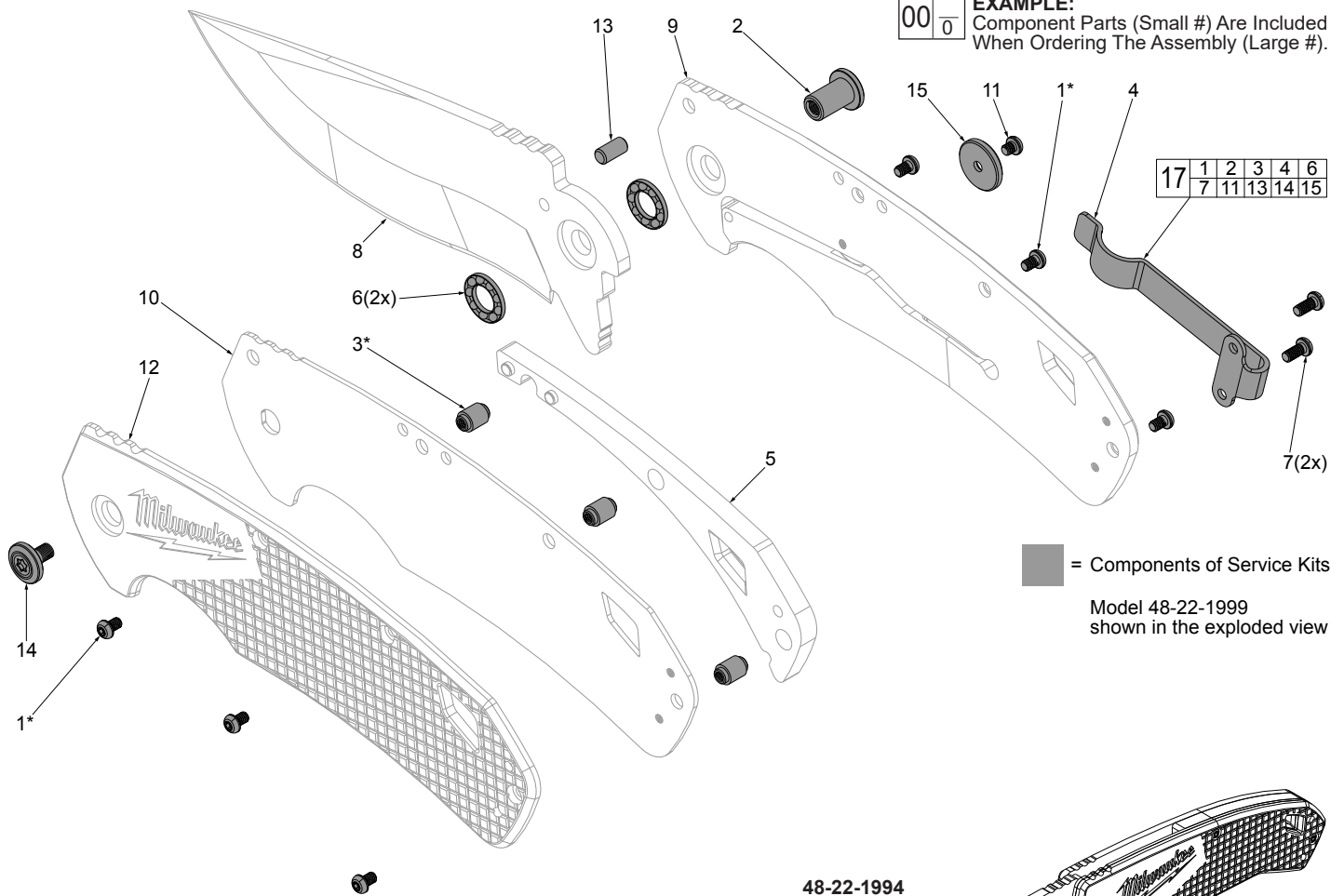


FIG.	PART NO.	DESCRIPTION OF PART	NO. REQ.
1	-----	Body Screw (*4 required for 48-22-1994 & 48-22-1997)	6
2	-----	Barrel Nut Hinge	1
3	-----	Nut Bushing (*2 required for 48-22-1994 & 48-22-1997)	3
4	-----	Belt Clip	1
5	-----	Spacer	1
6	-----	Race Bearing	2
7	-----	Belt Clip Screw	2
8	-----	HARDLINE™ Blade	1
9	-----	Handle Assembly - Right	1
10	-----	Liner - Left	1
11	-----	Washer Screw	1
12	-----	Handle Left	1
13	-----	Stop Pin	1
14	-----	Hinge Screw	1
15	-----	Washer	1
17	14-46-0049	Service Kit for the 48-22-1994 HARDLINE™ 3" Smooth Blade Pocket Knife	1
		or	
		Service Kit for the 48-22-1998 HARDLINE™ 3" Serrated Blade Pocket Knife	1
		or	
		Service Kit for the 48-22-1999 HARDLINE™ 3-1/2" Smooth Blade Pocket Knife	1

