



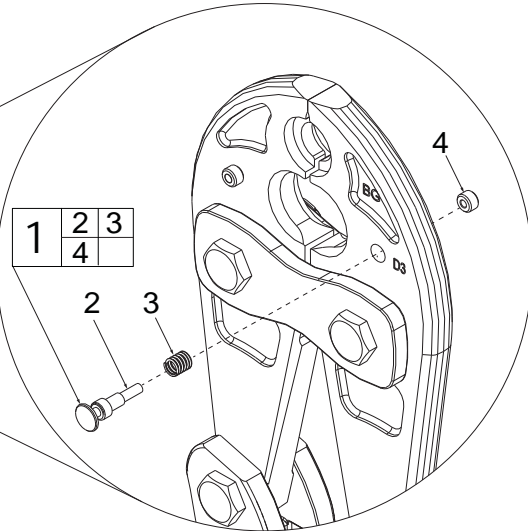
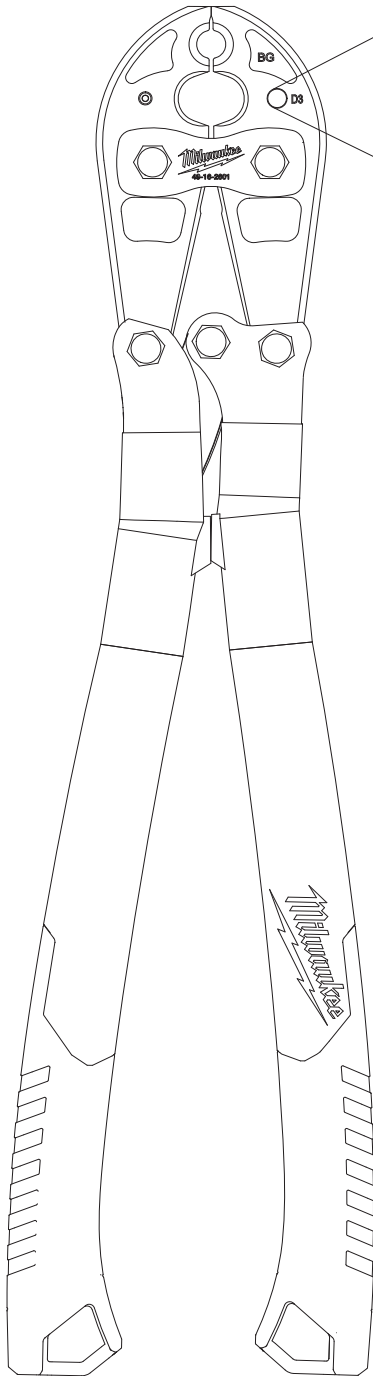
SERVICE PARTS LIST

BULLETIN NO.
54-49-1600

SPECIFY CATALOG NO. AND SERIAL NO. WHEN ORDERING PARTS		REVISED BULLETIN	DATE
MANUAL CRIMPER			Apr. 2015
CATALOG NO. 49-16-2601	SERIAL NUMBER	WIRING INSTRUCTION	

00 0

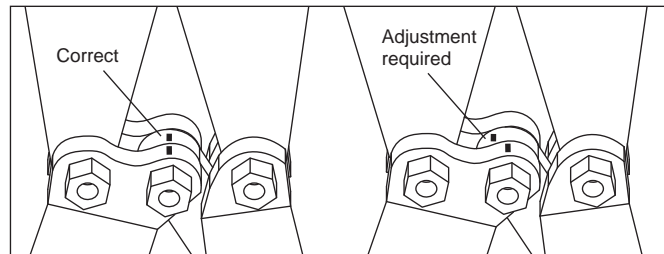
EXAMPLE:
Component Parts (Small #) Are Included
When Ordering The Assembly (Large #).



Inspection and Adjustment

Check tools periodically for correct adjustment. As with any tool, a slight amount of wear may occur over time. This wear may be corrected by readjusting the tool as follows:

1. Remove any die inserts from the tool and make sure the jaw tips are free of dirt, etc.
2. Open tool and close handles until jaw tips just touch. **DO NOT CLOSE HANDLES COMPLETELY!**
3. Check that the index marks (red grooves) on the toggle link and frame line up.



4. If the marks line up, the tool is in proper adjustment.
5. If the marks do not line up, loosen the locking set screw using a 1/4" (6.4 mm) hex key, and then turn the adjustment screw clockwise or counterclockwise until the marks line up.
6. Tighten the locking set screw securely; the tool is now properly adjusted and ready for use.

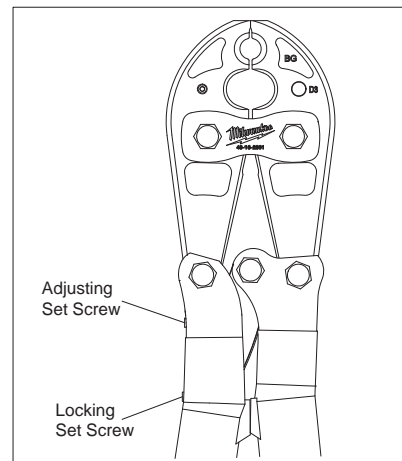


FIG.	PART NO.	DESCRIPTION OF PART
1	14-46-0545	Pin Kit
2	-----	Pin
3	-----	Spring
4	-----	Nut

NO.	REQ.
(2)	
(2)	
(2)	
(2)	