

Carbide Drill Bits for Concrete and Masonry

Drill Bit Tool Selection Guide

SDS-PLUS

Fits all current and older SDS-PLUS rotohammers from AEG, Black & Decker, Bosch, DeWalt, Hilti, Hitachi, Kango, Makita, Metabo, Milwaukee, Porter Cable, Ramset, Red Head, Ryobi, Skil

SDS-MAX

Fits all current and older SDS-MAX rotohammers from Black & Decker, Bosch, DeWalt, Hilti, Hitachi, Kango, Makita, Metabo, Milwaukee

Spline

Fits all current and older Spline rotohammers from AEG, Black & Decker, Bosch, DeWalt, Hitachi, Kango, Makita, Metabo, Milwaukee, Ramset, Red Head, Ryobi

The following are registered trademarks of the respective holders:

AEG® – AEG Power Tool Corp.
 Bosch® – Robert Bosch Power Tool Corp.
 SDS-PLUS® and SDS-MAX® are registered trademarks of Robert Bosch Power Tool Corp.
 B&D® – Black and Decker US, Inc.
 Hilti® – Hilti of America, Inc.
 Hitachi® – Hitachi Power Tools USA, Ltd.
 Kango® – Kango Wolf Power Tools, Inc.
 Makita® – Makita USA, Inc.
 Metabo® – Metabo Corp.
 Milwaukee® – Milwaukee Electric Tool Corp.
 Porter Cable® – Porter Cable Corporation
 Ramset® – Illinois Tool Works
 Red Head® – Illinois Tool Works
 Ryobi® – Ryobi America Corporation



SDS-PLUS Drill Bits

SDS-PLUS Shank Bits

Diameter (in.)	Drilling Depth (in.)	Overall Length (in.)	Model No.
5/32	2	4 1/4	MDPL01504
	4	6 1/4	MDPL01506
3/16	2	4 1/4	MDPL01804
	4	6 1/4	MDPL01806
	6	8 1/4	MDPL01808
	8	10	MDPL01810
	10	12	MDPL01812
7/32	12	14	MDPL01814
	4	6 1/4	MDPL02106
	6	8 1/4	MDPL02108
	11	8 3/4	MDPL02111
1/4	14	16	MDPL02116
	18	20	MDPL02120
	2	4 1/4	MDPL02504
	4	6 1/4	MDPL02506
	6	8 1/4	MDPL02508
5/16	9	11	MDPL02511
	12	14	MDPL02514
	14	16	MDPL02516
	4	6 1/4	MDPL03106
3/8	10	12	MDPL03112
	4	6 1/4	MDPL03706
	8	10 1/4	MDPL03710
	10	12 1/4	MDPL03712
	16	18	MDPL03718
7/16	22	24	MDPL03724
	4	6 1/4	MDPL04306
	10	12 1/4	MDPL04312
1/2	4	6 1/4	MDPL05006
	8	10 1/4	MDPL05010
	10	12 1/4	MDPL05012
	16	18	MDPL05018
	22	24	MDPL05024
9/16	4	6 1/4	MDPL05606
	10	12 1/4	MDPL05612
	16	18	MDPL05618
5/8	6	8	MDPL06208
	10	12	MDPL06212
	16	18	MDPL06218
	22	24	MDPL06224
1 1/16	6	8	MDPL06808
	6	8	MDPL07508
3/4	8	10	MDPL07510
	10	12	MDPL07512
	16	18	MDPL07518
	22	24	MDPL07524
	6	8	MDPL08108
27/32	6	8	MDPL08408
7/8	6	8	MDPL08708
	10	12 1/4	MDPL08712
	16	18	MDPL08718
1	8	10	MDPL10010
	16	18	MDPL10018

SDS-PLUS Shank Bit

SDS-PLUS bits use an asymmetrical-parabolic flute for efficient energy transmission and dust removal.



SDS-PLUS Drill Bits

SDS-PLUS Solid-Tip Carbide Drill Bits

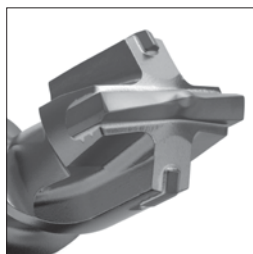
Diameter (in.)	Total Length (in.)	Drilling Depth (in.)	Model No.
3/16	4 1/4	2	MDPL01804S
3/16	6 1/4	4	MDPL01806S
3/16	8 1/4	6	MDPL01808S
3/16	12	10	MDPL01812S
1/4	6 1/4	4	MDPL02506S
1/4	8 1/4	6	MDPL02508S
1/4	12	10	MDPL02512S
5/16	6 1/4	4	MDPL03106S
5/16	12	10	MDPL03112S
3/8	6 1/4	4	MDPL03706S
3/8	12 1/4	10	MDPL03712S
1/2	6 1/4	4	MDPL05006S
1/2	12 1/4	10	MDPL05012S
9/16	6	4	MDPL05606S
9/16	12	10	MDPL05612S



Solid-Tip Carbide Drill Bit

SDS-PLUS Quad Head Drill Bits

Diameter (in.)	Drilling Depth (in.)	Overall Length (in.)	Model No.
5/8	6	8	MDPL06208Q
	10	12	MDPL06212Q
	16	18	MDPL06218Q
3/4	6	8	MDPL07508Q
	10	12	MDPL07512Q
	16	18	MDPL07518Q
7/8	6	8	MDPL08708Q
	10	12	MDPL08712Q
	16	18	MDPL08718Q
1	8	10	MDPL10010Q
	16	18	MDPL10018Q
1 1/8	8	10	MDPL11210Q
	16	18	MDPL11218Q
1 1/4	16	18	MDPL12518Q



Quad Head

SDS-PLUS Drill Bits

SDS-PLUS Shank Bits — Retail Packs

Diameter (in.)	Drilling Depth (in.)	Overall Length (in.)	Quantity (per pack)	Model No.
5/32	4	6 1/4	25	MDPL01506-R25
3/16	2	4 1/4	25	MDPL01804-R25
	4	6 1/4	25	MDPL01806-R25
	6	8 1/4	25	MDPL01808-R25
	8	10	25	MDPL01810-R25
	10	12	25	MDPL01812-R25
	12	14	25	MDPL01814-R25
7/32	4	6 1/4	25	MDPL02106-R25
	6	8 1/4	25	MDPL02108-R25
	8 3/4	11	25	MDPL02111-R25
1/4	2	4 1/4	25	MDPL02504-R25
	4	6 1/4	25	MDPL02506-R25
	6	8 1/4	25	MDPL02508-R25
	8 3/4	11	25	MDPL02511-R25
5/16	4	6 1/4	25	MDPL03106-R25
3/8	4	6 1/4	25	MDPL03706-R25
	8	10 1/4	25	MDPL03710-R25
	10	12 1/4	25	MDPL03712-R25
1/2	4	6 1/4	25	MDPL05006-R25
	8	10 1/4	25	MDPL05010-R25
	10	12 1/4	25	MDPL05012-R25
5/8	6	8	20	MDPL06208-R20



SDS-PLUS Retail Packs



Fixed-Depth Drill Bit

Carbide Drill Bits

Fixed-Depth Drill Bits

Model No.	Drill Bit Diameter (in.)	Drill Depth (in.)	Drop-In Anchor (in.)
Standard Drop-In Anchors (DIAB, DIA)			
MDPL037DIA	3/8	1 1/16	1/4
MDPL050DIA	1/2	1 11/16	3/8
MDPL062DIA	5/8	2 1/16	1/2
Short Drop-In Anchors (DIAS)			
MDPL050DIAS	1/2	1 11/16	3/8
MDPL062DIAS	5/8	2 1/16	1/2

SDS-PLUS Drill Bits

Titen® Screw Drill Bit/Driver Product Data*

Diameter (in.)	Drilling Depth (in.)	Overall Length (in.)	For Screw Diameter (in.)	Model No.
5/32	2 3/8	5	3/16	MDPL01505H
	3 1/8	6	3/16	MDPL01506H
	4 1/8	7	3/16	MDPL01507H
3/16	2 3/8	5	1/4	MDPL01805H
	3 1/8	6	1/4	MDPL01806H
	4 1/8	7	1/4	MDPL01807H

Product is sold individually.

Titen® Screw Drill Bit/Driver — Bulk Packs*

Diameter (in.)	Drilling Depth (in.)	Overall Length (in.)	For Screw Diameter (in.)	Model No.
5/32	2 3/8	5	3/16	MDPL01505H-R25
	4 1/8	7	3/16	MDPL01507H-R25
3/16	2 3/8	5	1/4	MDPL01805H-R25
	4 1/8	7	1/4	MDPL01807H-R25

*SDS-PLUS Shank



Special hex adaptor (included with the Titen® Screw installation kit) allows the Titen installation tool to slide over the bit and lock in, ready to drive Titen concrete and masonry screws. Rotohammer must be in rotation-only mode before driving screws.

SDS-PLUS and SDS-MAX Drill Bits

SDS-MAX and SDS-MAX Quad Head Shank Bits

Diameter (in.)	Drilling Depth (in.)	Overall Length (in.)	Model No.
3/8	7 1/2	13	MDMX03713
1/2	7 1/2	13	MDMX05013
	15 1/2	21	MDMX05021
9/16	7 1/2	13	MDMX05613
	15 1/2	21	MDMX05621
5/8	7 1/2	13	MDMX06213Q
	15 1/2	21	MDMX06221Q
	30 1/2	36	MDMX06236Q
1 1/16	15 1/2	21	MDMX06821Q
3/4	8	13	MDMX07513Q
	17	21	MDMX07521Q
	31	36	MDMX07536Q
13/16	17	21	MDMX08121Q
7/8	8	13	MDMX08713Q
	17	21	MDMX08721Q
	31	36	MDMX08737Q
1	8	13	MDMX10013Q
	17	21	MDMX10021Q
	31	36	MDMX10036Q
1 1/16	18	23	MDMX10623Q
1 1/8	12	17	MDMX11217Q
	17	21	MDMX11221Q
	31	36	MDMX11236Q
1 3/16	18	23	MDMX11823Q
1 1/4	10	15	MDMX12515Q
	18	23	MDMX12523Q
	31	36	MDMX12536Q
1 3/8	12	17	MDMX13717Q
	18	23	MDMX13723Q
1 1/2	18	23	MDMX15023Q
1 3/4	18	23	MDMX17523Q
2	18	23	MDMX20023Q

Model numbers ending with "Q" denote Quad Head.



Quad Head
Model numbers ending with "Q" denote quad-head bits.



SDS-MAX
Shank Bit